

WPMM

SOFTWARE VERSION CODE	
1	VERSION 1

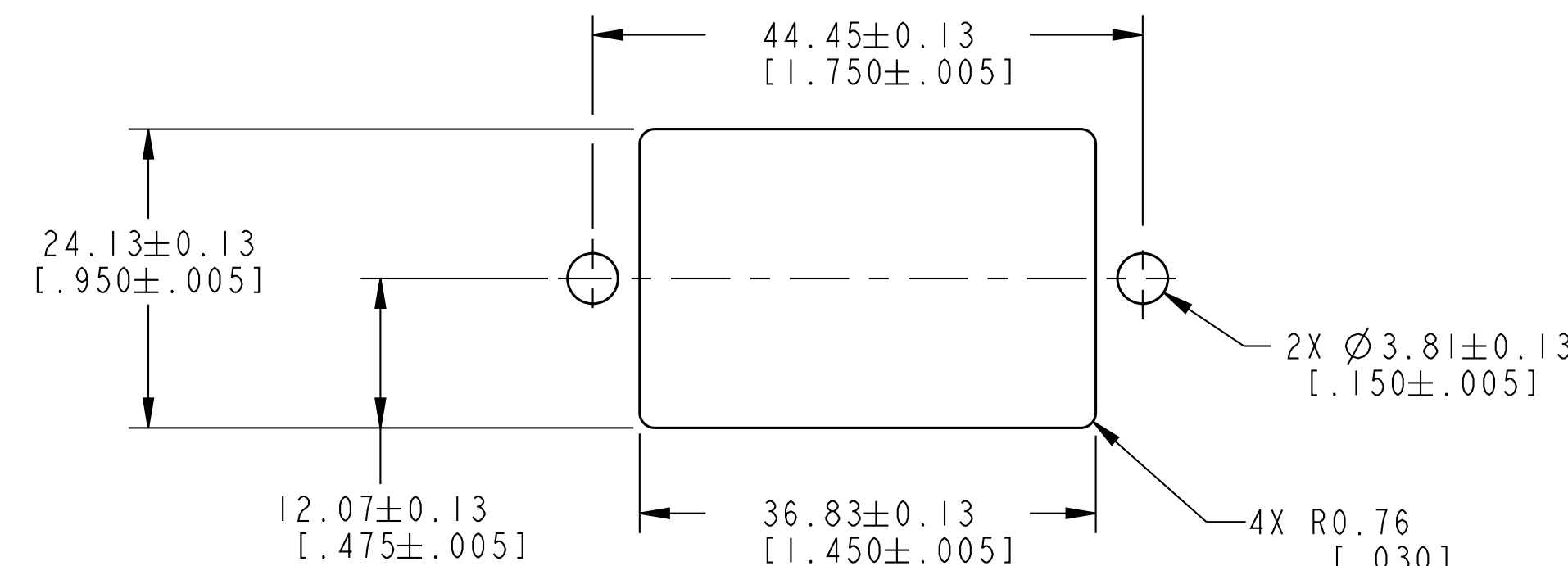
RF CODE	
A	2.4 GHz ; IEEE 802.15.4

ANTENNA TYPE CODE		9	10
00	NO ANTENNA; RP-SMA CONNECTOR JACK <u>3</u>		
01	2.2dBi OMNI WITH SWITCH MOUNT; STRAIGHT DESIGN		
02	2.2dBi OMNI WITH SWITCH MOUNT; TILT & SWIVEL DESIGN		
03	3.0 dBi OMNI WITH REMOTE ADHESIVE MOUNT & 9.8 FOOT CABLE		
04	5.5 dBi OMNI WITH REMOTE MAGNETIC MOUNT; TILT & SWIVEL DESIGN & 5 FOOT CABLE <u>7</u>		
05	5.5 dBi OMNI WITH REMOTE MAGNETIC MOUNT; TILT & SWIVEL DESIGN & 10 FOOT CABLE <u>7</u>		
06	9.0 dBi OMNI WITH REMOTE MAGNETIC MOUNT; TILT & SWIVEL DESIGN & 5 FOOT CABLE <u>7</u>		
07	9.0 dBi OMNI WITH REMOTE MAGNETIC MOUNT; TILT & SWIVEL DESIGN & 10 FOOT CABLE <u>7</u>		
08	8.0 dBi OMNI WITH REMOTE BRACKET MOUNT; STRAIGHT DESIGN & 3 FOOT CABLE		
09	8.0 dBi OMNI WITH REMOTE BRACKET MOUNT; STRAIGHT DESIGN & 11 FOOT CABLE		
10	2.2 dBi OMNI WITH REMOTE MAGNETIC MOUNT; STRAIGHT DESIGN & 10 FOOT CABLE		

COUNTRY USE CODE	
A	US, CANADA, MEXICO
B	ALL OTHER APPROVED COUNTRIES

SPECIALS	
S01	NON-ISOLATED SOLID STATE RELAY OUTPUT


MOUNTING HOLES / POCKET DIMENSIONS



NOTES:

- 1 - DO NOT USE SHARP OBJECTS FOR ACTUATING FUNCTION SWITCH.
- 2 - FUNCTION SWITCH OPERATING FORCE: 1.5 - 3.0 N
- 3 - WPMM WILL REQUIRE AN ANTENNA TO FUNCTION PROPERLY. REFER TO COUNTRY USE CODE CHART FOR ANTENNA SELECTION.
- 4 - WPMM TO ACCOMMODATE UPTO 15.87mm (.625 INCH) THICK PANEL.
- 5 - WPMM RETAINER FURNISHED UNASSEMBLED.
- 6 - FUNCTIONS OF LED'S AND FUNCTION SWITCH ARE DESCRIBED IN THE WPMM INSTALLATION AND TECHNICAL MANUAL.
- 7 - 5.5 dBi AND 9.0 dBi ANTENNAS RATED FOR LIMITED OUTDOOR EXPOSURE. PROTECT AGAINST DIRECT RAIN, SLEET, SNOW AND ICE ETC EXPOSURE.
- 8 - ANTENNA AND ELECTRICAL CONNECTIONS ARE DESCRIBED IN THE WPMM INSTALLATION AND TECHNICAL MANUAL
- 9 - ONLY ANTENNA TYPE CODES 00, 01, 02, 03, 05 & 10 AVAILABLE WITH COUNTRY USE CODE B, ALL ANTENNA TYPE CODES AVAILABLE FOR COUNTRY USE CODES A
- 10 - FOR ADDITIONAL ANTENNA DETAILS SEE INDIVIDUAL HONEYWELL DRAWINGS LISTED IN THE ACCESSORIES & REPLACEMENT COMPONENT CHART
- 11 - OPTIONAL ACCESSORIES & REPLACEMENT COMPONENTS PER THE ATTACHED CHART ARE OFFERED FOR SALE BY HONEYWELL
- 12 - RoHS AND REACH COMPLIANT

ACCESSORIES & REPLACEMENT COMPONENTS CHART

ACCESSORIES & REPLACEMENT COMPONENTS CHART 		
ACCESSORY CATALOG LISTING	SEE HONEYWELL DRAWING/10	DESCRIPTION
WPR1	WPR1	WPMM PANEL MOUNT RETAINER CLIP
WPB1	WPB1	WPMM MOUNTING BRACKET
WAN01RSP	WAN01RSP	REPLACEMENT ANTENNA FOR ANTENNNA TYPE CODE 01
WAN02RSP	WAN02RSP	REPLACEMENT ANTENNA FOR ANTENNNA TYPE CODE 02
WAN03RSP	WAN03RSP	REPLACEMENT ANTENNA FOR ANTENNNA TYPE CODE 03
WAN04RSP	WAN04RSP	REPLACEMENT ANTENNA FOR ANTENNNA TYPE CODES 04 & 05, ANTENNA ONLY
WAN05RSP	WAN05RSP	REPLACEMENT ANTENNA FOR ANTENNNA TYPE CODES 06 & 07, ANTENNA ONLY
WAN06RNJ	WAN06RNJ	REPLACEMENT ANTENNA FOR ANTENNNA TYPE CODES 08 & 09, ANTENNA ONLY
WCA200RNPRSP-002	WCA200RNPRSP	REPLACEMENT CABLE FOR ANTENNA CODE 08, CABLE ONLY
WCA200RNPRSP-010	WCA200RNPRSP	REPLACEMENT CABLE FOR ANTENNA CODE 09, CABLE ONLY
WAMM100RSP-005	WAMM100RSP	REPLACEMENT MAGNETIC MOUNT & CABLE FOR ANTENNA CODES 04 & 06
WAMM100RSP-010	WAMM100RSP	REPLACEMENT MAGNETIC MOUNT & CABLE FOR ANTENNA CODES 05, 07 & 10

COUNTRY USE CODE CHART


COUNTRY USE CODE A						COUNTRY USE CODE B					
ANTENNA TYPE CODE ALLOWED FOR USE	ANTENNAS ALLOWED TO BE USED FOR INTEGRAL MOUNT	ANTENNAS ALLOWED TO BE USED FOR REMOTE MOUNT	ANTENNAS ALLOWED TO BE USED WITH MAGNETIC REMOTE MOUNT ASSEMBLIES WAMM100RSP-005 WAMM100RSP-010	ANTENNAS ALLOWED TO BE USED WITH ONE (1) EXTENSION CABLE ASSEMBLIES WCA200RSJRSP-002 WCA200RSJRSP-005 WCA200RSJRSP-010 WCA200RSJRSP-015 WCA200RSJRSP-020	ANTENNAS ALLOWED TO BE USED WITH ONE (1) EXTENSION CABLE ASSEMBLIES FOR REMOTE MOUNT WCA200RNPRSP-002 WCA200RNPRSP-010	ANTENNA TYPE CODE ALLOWED FOR USE	ANTENNAS ALLOWED TO BE USED FOR INTEGRAL MOUNT	ANTENNAS ALLOWED TO BE USED FOR REMOTE MOUNT	ANTENNAS ALLOWED TO BE USED WITH MAGNETIC REMOTE MOUNT ASSEMBLIES WAMM100RSP-005	ANTENNAS ALLOWED TO BE USED WITH MAGNETIC REMOTE MOUNT ASSEMBLIES WAMM100RSP-010	ANTENNAS ALLOWED TO BE USED WITH ONE (1) EXTENSION CABLE ASSEMBLIES FOR REMOTE MOUNT WCA200RSJRSP-002 WCA200RSJRSP-005 WCA200RSJRSP-010 WCA200RSJRSP-015 WCA200RSJRSP-020
00	WAN01RSP	WAN03RSP	WAN01RSP	WAN01RSP	WAN06RNJ	00	WAN01RSP	WAN03RSP	WAN01RSP	WAN01RSP	WAN01RSP
01	WAN02RSP	WAN06RNJ	WAN02RSP	WAN02RSP		01	WAN02RSP	WAN09RSP	WAN02RSP	WAN02RSP	WAN02RSP
02	WAN04RSP	WAN09RSP	WAN04RSP	WAN03RSP		02	WAN07RSP	WAN10RSP	WAN07RSP	WAN04RSP	WAN03RSP
03	WAN05RSP	WAN10RSP	WAN05RSP	WAN04RSP		03			WAN08RSP	WAN07RSP	WAN07RSP
04	WAN07RSP	WAN11RSP	WAN07RSP	WAN05RSP		05				WAN08RSP	WAN08RSP
05	WAN08RSP		WAN08RSP	WAN07RSP		10					WAN09RSP
06				WAN08RSP		11					WAN10RSP
07				WAN09RSP							WAN11RSP
08				WAN10RSP							
09				WAN11RSP							
10											
11											

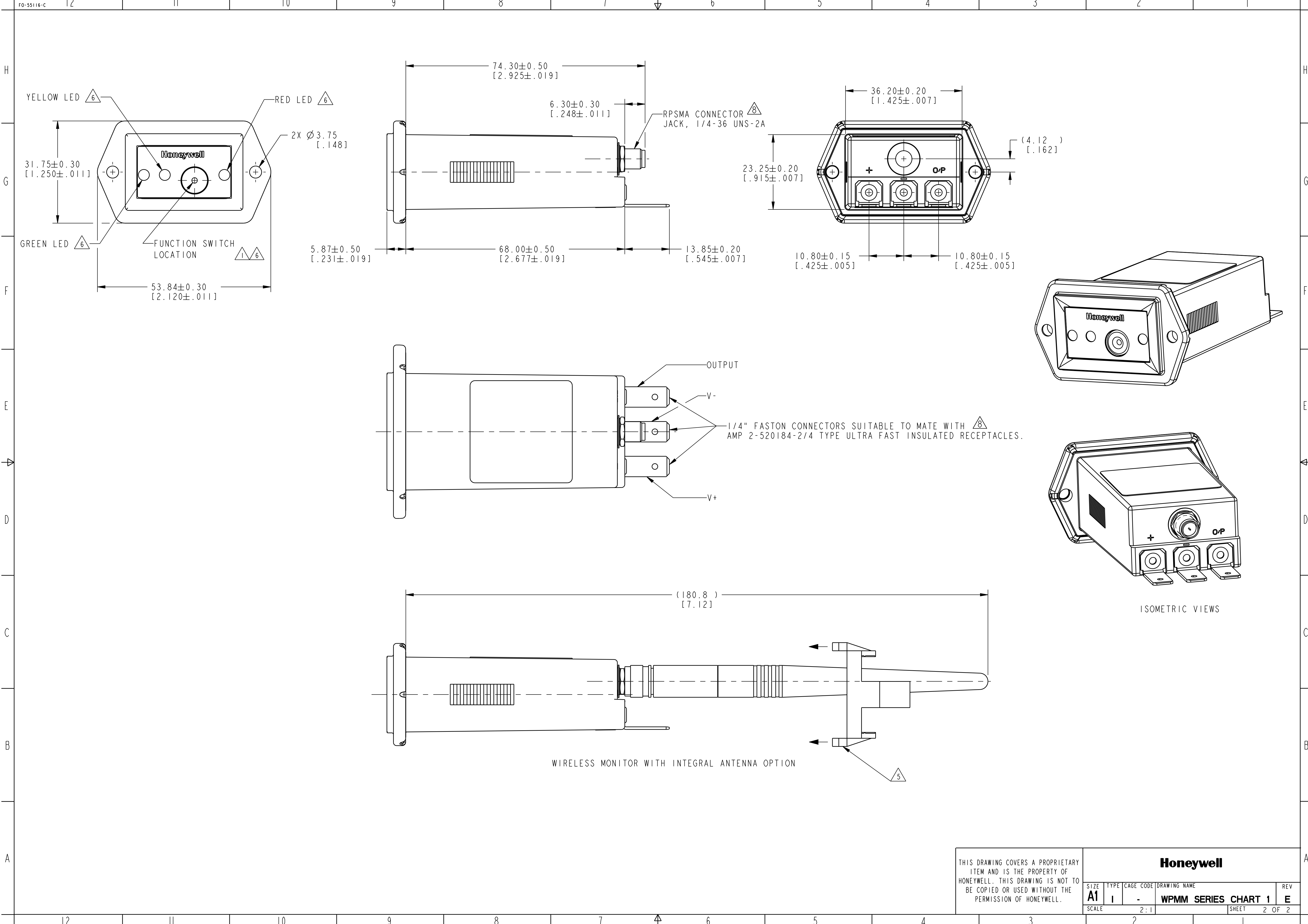
COUNTRY USE CODE	COMMUNICATION AGENCY APPROVAL	COUNTRY
A	IC, COFETEL, FCC	CANADA, MEXICO, US
B	ACMA, ANATEL, SRRC, ETSI, KCC, WPC, IDA	AUSTRALIA, NEW ZEALAND, BRAZIL, CHINA, EUROPEAN COUNTRIES*, KOREA, INDIA, SINGAPORE

*REFER TO WDRR INSTALLATION AND TECHNICAL MANUAL FOR FULL LIST OF COUNTRIES APPROVED

WPMM PRODUCT SPECIFICATION CHART

WPMM PRODUCT SPECIFICATION CHART		
SUPPLY VOLTAGE	10 - 30Vdc	
SUPPLY CURRENT	750mA MAX.	
OUTPUT TYPE	NPN CURRENT SINKING; NORMALLY OPEN	NON-ISOLATED SOLID STATE RELAY
LOAD CURRENT	5mA TO 200mA	120mA MAX.
LEAKAGE CURRENT	50 μ A MAX.	1 μ A MAX (OFF- STATE)
VOLTAGE DROP	1.75 VDC MAX. @ MAX. LOAD @ 25°C [77°F]	N/A
Vout (with SSR CLOSED)	N/A	(Vpower supply MINUS 3.3) VDC MIN. @ 10mA TO 120mA LOAD CURRENT
Vout (with SSR OPEN)	N/A	0.5VDC MAX.
SEALING	IP 67	
REVERSE POLARITY PROTECTION	YES	
EMC	LATEST APPLICABLE STANDARDS: EN 300 328, VI.7.1; EN 61326-1 (2006); EN 301 489-1, VI.8.1; EN 301 489-17, V2.1.1	
SHOCK	IEC 60068-2-27; HALF SINE, 10g, 6mS, 3 AXIS	
VIBRATION	IEC 60068-2-6; 10-500Hz W/ 0.35 mm - PEAK-TO-PEAK, 58-500 Hz - 5g	
OPERATING TEMPERATURE	-40°C TO 85°C [-40°F TO 185°F]	
WEIGHT	50.4gms. APPROX. WITHOUT ANTENNA.	
AUDIBLE TONE	APPROXIMATELY 60 dBA.	

DESIGN UNITS: MM [INCH]		DRAWN		KNR		22OCT09		<div>Honeywell</div>							
TOLERANCES UNLESS NOTED:		CHECK		VK		22OCT09									
NO PLACES .X ± 1.000		THIS DRAWING COVERS A PROPRIETARY ITEM AND IS THE PROPERTY OF HONEYWELL. THIS DRAWING IS NOT TO BE COPIED OR USED WITHOUT THE PERMISSION OF HONEYWELL.						TITLE		MONITOR ASSEMBLY, WIRELESS					
ONE PLACE .X ± 0.40															
TWO PLACE .XX ± 0.10															
THREE PLACE .XXX ± 0.005															
ANGLES .X ± 0.3°		INTERPRET PER ASME Y14.5M-1994 OTHER HONEYWELL ENGINEERING STANDARDS MAY APPLY						SIZE TYPE		CAGE CODE		DRAWING NAME		REV	
THIRD ANGLE PROJECTION		Pro/ENGINEER 3D						A1 I		-		WPMM SERIES CHART 1		E	
								SCALE 2 : 1		SHEET 1 OF					



THIS DRAWING COVERS A PROPRIETARY ITEM AND IS THE PROPERTY OF HONEYWELL. THIS DRAWING IS NOT TO BE COPIED OR USED WITHOUT THE PERMISSION OF HONEYWELL.	Honeywell						
	SIZE	TYPE	CAGE CODE	DRAWING NAME			REV
	A1	I	-	WPMM SERIES CHART 1			E
	SCALE			2 : 1		SHEET	2 OF 2