

IEC Appliance Inlet C14 with Filter, Line Switch 1- or 2-pole, Front or Rear Side Mounting

Standard- or Medical-Filter



V-Lock

new

Screw-On Version
from front side

from front side

Screw-On Version
from rear side

70° C

**Description**

- Panel Mount:
Screw-on version from front or rear side, snap-in version from front side
- 3 Functions:
Appliance Inlet Protection class I, Line Switch 1- or 2-pole, Line filter in standard and medical version
- Quick connect terminals 6.3 x 0.8 mm

Approvals

- VDE Certificate Number: 40001522
- UL File Number: E72928

Characteristics

- Compact design with optimal shielding
Rear side mounting for efficient cost-saving assembly
- All single elements are already wired
- Line switch non-illuminated or illuminated
Marquard switch for high inrush currents
- Universal line filter for standard applications
- Ideal for application with high transient loads
- Suitable for use in equipment according to IEC 60950

Other versions on request

- Solder terminals
- Other rocker marking
- Capacitance CX1

ReferencesAlternative: version without line filter [DC11](#)Substitute for type [KFB1](#); [KFB2](#)Alternative: Standard version [DC11](#)**Weblinks**

[pdf-datasheet](#), [html-datasheet](#), [General Product Information](#), [Approvals](#), [CE declaration of conformity](#), [RoHS](#), [CHINA-RoHS](#), [Mating Connectors](#), [e-Shop](#), [SCHURTER-Stock-Check](#), [Distributor-Stock-Check](#), [CAD-Drawings](#), [Accessories](#), [Wire Harnessing](#), [Mounting instruction](#), [Detailed request for product](#)

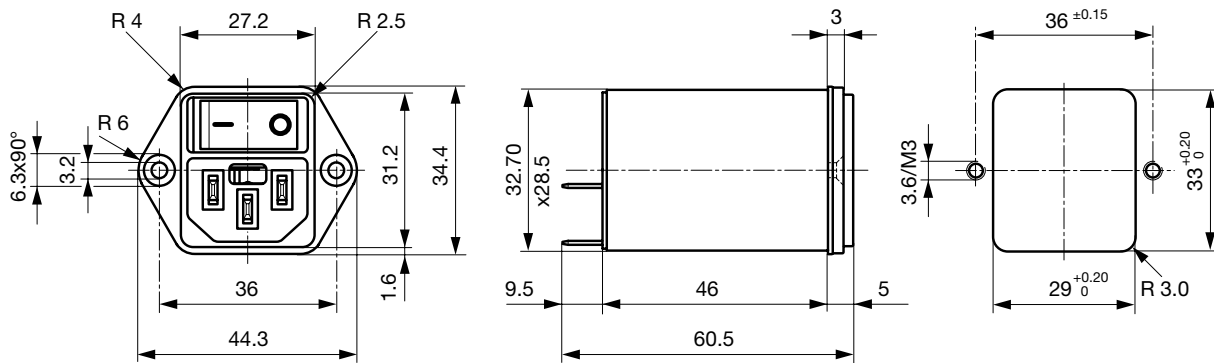
Newly available variants corresponding to V-Lock mating cordset. The connector is equipped with a notch intended for use with the latching cordset. The cord latching system prevents against accidental removal of the cordset.

Technical Data

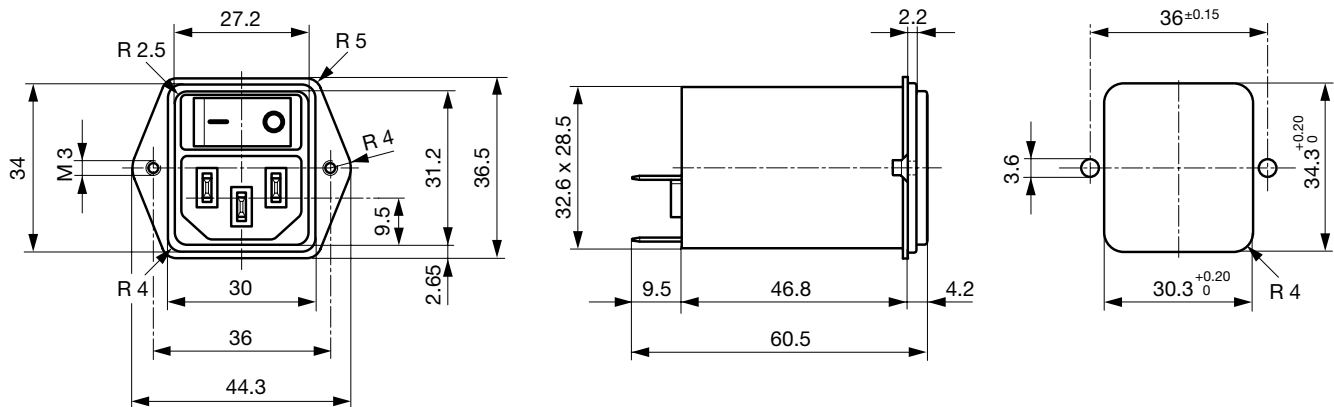
Ratings IEC	1 - 10 A @ Ta 40 °C / 250 VAC; 50 Hz	Appliance-Inlet/-Outlet	C14 acc. to IEC 60320, UL 498, CSA C22.2 no. 42 (for cold conditions) pin-temperature 70 °C, 10 A, Protection Class I
Ratings UL/CSA	1 - 10 A @ Ta 40 °C / 125 VAC; 60 Hz	Line Switch	Rocker switch 1 or 2 pole, non-illuminated or illuminated, acc. to IEC 61058-1 Technical Details
Leakage Current	standard < 0.5 mA (250 V / 60 Hz) medical < 5 µA (250 V / 60 Hz)	Line Filter	Standard and Medical Version, IEC 60939, IEC 60601-1, UL 1283, UL 544, EN 133 200, CSA C22.2 no. 8 Technical Details
Dielectric Strength	> 1.7 kVDC between L-N > 2.7 kVDC between L/N-PE Test voltage (2 sec)	MTBF	> 1'900'000 h acc. to MIL-HB-217 F
Allowable Operation Temp.	-25 °C to 85 °C		
Climatic Category	25/085/21 acc. to IEC 60068-1		
Degree of Protection	from front side IP 40 acc. to IEC 60529		
Protection Class	Suitable for appliances with protection class I acc. to IEC 61140		
Terminal	Quick connect terminals 6.3 x 0.8 mm		
Panel Thickness s	Screw: max 8 mm Mounting screw torque max 0.5 Nm Snap-in: 1 mm to 3 mm		
Material: Housing	Thermoplastic, black, UL 94V-0		

Dimensions

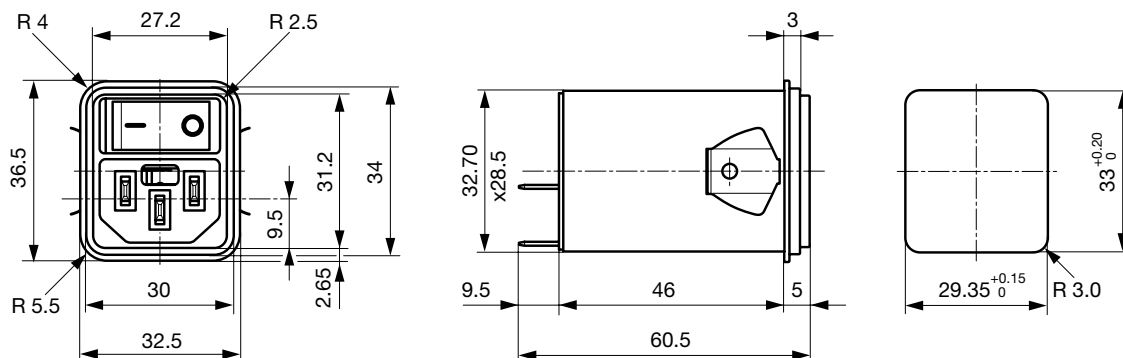
Screw-on mounting from front side



Screw-On Version from rear side (metal flange)



Snap-in mounting from front side

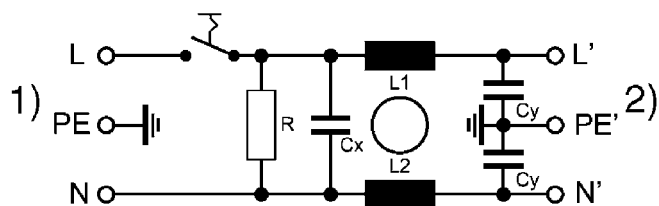


Technical Data of Filter-Components

Rated Current [A]	Filter-Type	Inductances L [mH]	Capacitance CX [nF]	Capacitance CY [nF]	R [mΩ]
1	Standard Version	2 x 10	100	2.2	1
2	Standard Version	2 x 4	100	2.2	1
4	Standard Version	2 x 1.5	100	2.2	1
6	Standard Version	2 x 0.8	100	2.2	1
10	Standard Version	2 x 0.3	100	2.2	1
1	Medical Version (M5)	2 x 10	100	-	1
2	Medical Version (M5)	2 x 4	100	-	1
4	Medical Version (M5)	2 x 1.5	100	-	1
6	Medical Version (M5)	2 x 0.8	100	-	1
10	Medical Version (M5)	2 x 0.3	100	-	1
1	Medical Version (M80)	2 x 10	100	0.47	1
2	Medical Version (M80)	2 x 4	100	0.47	1
4	Medical Version (M80)	2 x 1.5	100	0.47	1
6	Medical Version (M80)	2 x 0.8	100	0.47	1
10	Medical Version (M80)	2 x 0.3	100	0.47	1

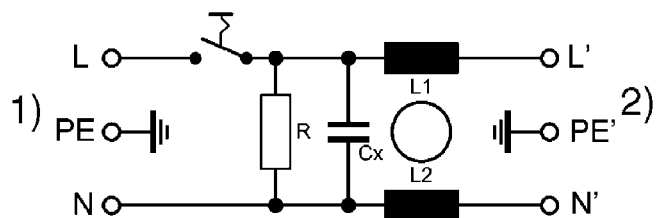
Diagrams

Standard filter 1-pole



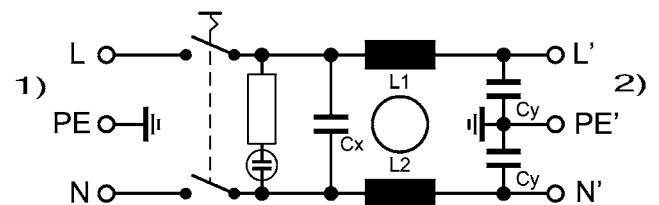
1) Line
2) Load

Medical filter 1-pole (M5)



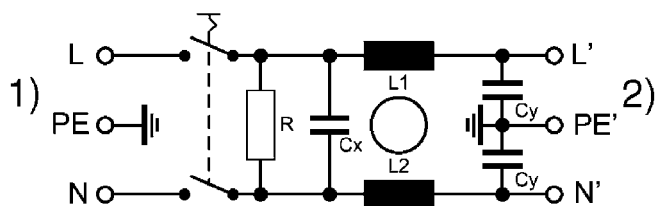
1) Line
2) Load

Standard filter 2-pole illuminated



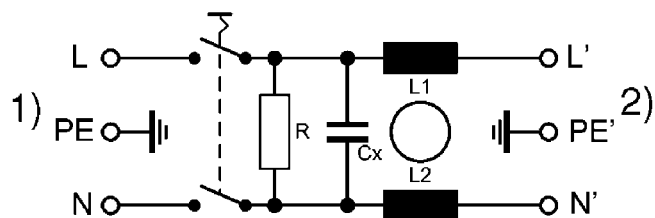
1) Line
2) Load

Standard filter 2-pole



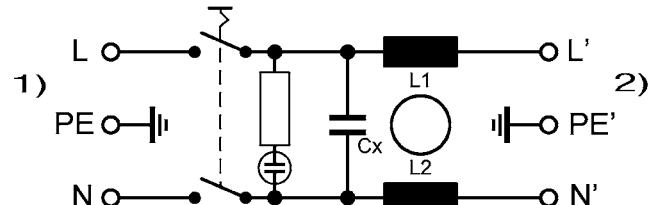
1) Line
2) Load

Medical filter 2-pole (M5)



1) Line
2) Load

Medical Filter 2-pole (M5) illuminated



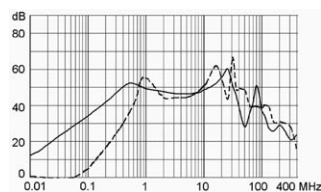
1) Line
2) Load

Attenuation Loss

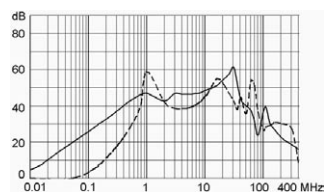
Standard version

- - - differential mode — common mode

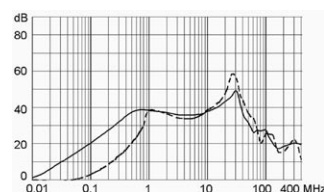
1 A



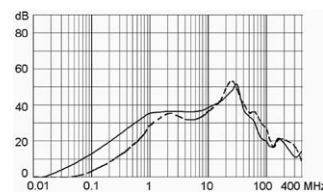
2 A



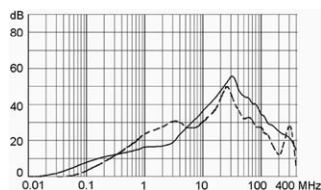
4 A



6 A

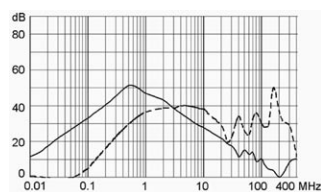


10 A

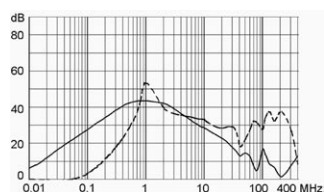


Medical version (M5)

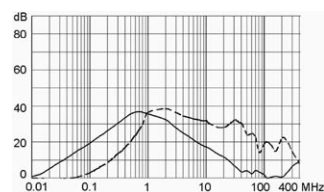
1 A



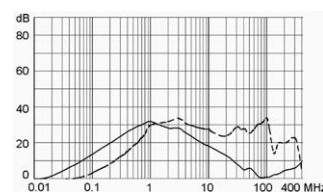
2 A



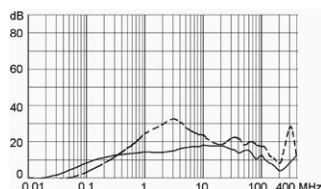
4 A



6 A



10 A

**Variants**

Rated current	Filter-Type	Panel mounting	Mounting side	Line Switch	Illumination	Color	Order Number
1	Standard Version	Screw	Front Side	1-pole	non-illuminated	-	DC12.1102.003
2	Standard Version	Screw	Front Side	1-pole	non-illuminated	-	DC12.2102.003
4	Standard Version	Screw	Front Side	1-pole	non-illuminated	-	DC12.3102.003
6	Standard Version	Screw	Front Side	1-pole	non-illuminated	-	DC12.4102.003
10	Standard Version	Screw	Front Side	1-pole	non-illuminated	-	DC12.5102.003
10	Standard Version	Screw	Front Side	1-pole	non-illuminated	-	DC12.5102.003.21
1	Standard Version	Screw	Front Side	2-pole	non-illuminated	-	DC12.1102.001
2	Standard Version	Screw	Front Side	2-pole	non-illuminated	-	DC12.2102.001
4	Standard Version	Screw	Front Side	2-pole	non-illuminated	-	DC12.3102.001
6	Standard Version	Screw	Front Side	2-pole	non-illuminated	-	DC12.4102.001
10	Standard Version	Screw	Front Side	2-pole	non-illuminated	-	DC12.5102.001
10	Standard Version	Screw	Front Side	2-pole	non-illuminated	-	DC12.5102.001.21
1	Standard Version	Screw	Rear Side	1-pole	non-illuminated	-	DC12.1102.203
2	Standard Version	Screw	Rear Side	1-pole	non-illuminated	-	DC12.2102.203
4	Standard Version	Screw	Rear Side	1-pole	non-illuminated	-	DC12.3102.203
6	Standard Version	Screw	Rear Side	1-pole	non-illuminated	-	DC12.4102.203

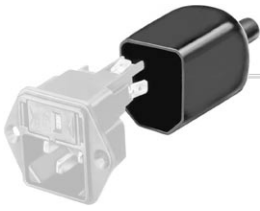
Rated current	Filter-Type	Panel mounting	Mounting side	Line Switch	Illumination	Color	Order Number
10	Standard Version	Screw	Rear Side	1-pole	non-illuminated	-	DC12.5102.203
1	Standard Version	Screw	Rear Side	2-pole	non-illuminated	-	DC12.1102.201
2	Standard Version	Screw	Rear Side	2-pole	non-illuminated	-	DC12.2102.201
4	Standard Version	Screw	Rear Side	2-pole	non-illuminated	-	DC12.3102.201
6	Standard Version	Screw	Rear Side	2-pole	non-illuminated	-	DC12.4102.201
10	Standard Version	Screw	Rear Side	2-pole	non-illuminated	-	DC12.5102.201
1	Standard Version	Snap-in	Front Side	1-pole	non-illuminated	-	DC12.1102.103
2	Standard Version	Snap-in	Front Side	1-pole	non-illuminated	-	DC12.2102.103
4	Standard Version	Snap-in	Front Side	1-pole	non-illuminated	-	DC12.3102.103
6	Standard Version	Snap-in	Front Side	1-pole	non-illuminated	-	DC12.4102.103
10	Standard Version	Snap-in	Front Side	1-pole	non-illuminated	-	DC12.5102.103
1	Standard Version	Snap-in	Front Side	2-pole	non-illuminated	-	DC12.1102.101
2	Standard Version	Snap-in	Front Side	2-pole	non-illuminated	-	DC12.2102.101
4	Standard Version	Snap-in	Front Side	2-pole	non-illuminated	-	DC12.3102.101
6	Standard Version	Snap-in	Front Side	2-pole	non-illuminated	-	DC12.4102.101
10	Standard Version	Snap-in	Front Side	2-pole	non-illuminated	-	DC12.5102.101
1	Medical Version (M5)	Screw	Front Side	1-pole	non-illuminated	-	DC12.1202.003
2	Medical Version (M5)	Screw	Front Side	1-pole	non-illuminated	-	DC12.2202.003
4	Medical Version (M5)	Screw	Front Side	1-pole	non-illuminated	-	DC12.3202.003
6	Medical Version (M5)	Screw	Front Side	1-pole	non-illuminated	-	DC12.4202.003
10	Medical Version (M5)	Screw	Front Side	1-pole	non-illuminated	-	DC12.5202.003
1	Medical Version (M5)	Screw	Front Side	2-pole	non-illuminated	-	DC12.1202.001
2	Medical Version (M5)	Screw	Front Side	2-pole	non-illuminated	-	DC12.2202.001
4	Medical Version (M5)	Screw	Front Side	2-pole	non-illuminated	-	DC12.3202.001
6	Medical Version (M5)	Screw	Front Side	2-pole	non-illuminated	-	DC12.4202.001
6	Medical Version (M5)	Screw	Front Side	2-pole	non-illuminated	-	DC12.4202.001.21
10	Medical Version (M5)	Screw	Front Side	2-pole	non-illuminated	-	DC12.5202.001
10	Medical Version (M5)	Screw	Front Side	2-pole	non-illuminated	-	DC12.5202.001.21
1	Medical Version (M5)	Screw	Rear Side	2-pole	non-illuminated	-	DC12.1202.201
2	Medical Version (M5)	Screw	Rear Side	2-pole	non-illuminated	-	DC12.2202.201
4	Medical Version (M5)	Screw	Rear Side	2-pole	non-illuminated	-	DC12.3202.201
6	Medical Version (M5)	Screw	Rear Side	2-pole	non-illuminated	-	DC12.4202.201
10	Medical Version (M5)	Screw	Rear Side	2-pole	non-illuminated	-	DC12.5202.201
1	Medical Version (M5)	Snap-in	Front Side	1-pole	non-illuminated	-	DC12.1202.103
2	Medical Version (M5)	Snap-in	Front Side	1-pole	non-illuminated	-	DC12.2202.103
4	Medical Version (M5)	Snap-in	Front Side	1-pole	non-illuminated	-	DC12.3202.103
6	Medical Version (M5)	Snap-in	Front Side	1-pole	non-illuminated	-	DC12.4202.103
10	Medical Version (M5)	Snap-in	Front Side	1-pole	non-illuminated	-	DC12.5202.103
1	Medical Version (M5)	Snap-in	Front Side	2-pole	non-illuminated	-	DC12.1202.101
2	Medical Version (M5)	Snap-in	Front Side	2-pole	non-illuminated	-	DC12.2202.101
4	Medical Version (M5)	Snap-in	Front Side	2-pole	non-illuminated	-	DC12.3202.101
6	Medical Version (M5)	Snap-in	Front Side	2-pole	non-illuminated	-	DC12.4202.101
10	Medical Version (M5)	Snap-in	Front Side	2-pole	non-illuminated	-	DC12.5202.101
6	Medical Version (M5)	Snap-in	Front Side	2-pole	illuminated	green	DC12.4232.101
1	Medical Version (M80)	Screw	Rear Side	2-pole	non-illuminated	-	DC12.1602.201
2	Medical Version (M80)	Screw	Rear Side	2-pole	non-illuminated	-	DC12.2602.201
4	Medical Version (M80)	Screw	Rear Side	2-pole	non-illuminated	-	DC12.3602.201
6	Medical Version (M80)	Screw	Rear Side	2-pole	non-illuminated	-	DC12.4602.201
10	Medical Version (M80)	Screw	Rear Side	2-pole	non-illuminated	-	DC12.5602.201

Suffix "21" corresponds to the version with V-Lock mating cordset. The connector is equipped with a notch intended for use with the latching cordset. The cord latching system prevents against accidental removal of the cordset. Available only for screw-on versions.

Packaging unit 10 Pcs

Accessories

Description



Assorted Covers
Rear Cover



Wire Harness
Wire harness for SCHURTER products



Cord retaining kits
Cord retaining strain relief

Mating Outlets/Connectors

Category / Description



Appliance Outlet Overview complete

IEC Appliance Outlet F, Screw-on Mounting, Front Side, Solder Terminal	4787
IEC Appliance Outlet F, Snap-in Mounting, Front Side, Solder or Quick-connect Terminal	4788
IEC Appliance Outlet F or H, Screw-on Mounting, Front Side, Solder, PCB or Quick-connect Terminal	5091

Appliance Outlet further types to DC12



Connector Overview complete

IEC Connector C15A, Rewireable, Straight	0102
IEC Connector C15A, Rewireable, Straight	0102-G
IEC Connector C15A, Rewireable, Angled	0112
IEC Connector C13, Rewireable, Angled	4012
IEC Connector C13, Rewireable, Straight	4022

Connector further types to DC12

...