

## 2 X 2 Crosspoint Switch for Audio Applications

Check for Samples: [TS3A26746E](#)

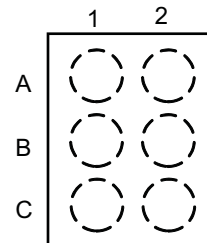
### FEATURES

- Ultra Low  $R_{ON}$  for GND Switch (80-m $\Omega$  typical)
- $R_{ON}$  for MIC Switch <10- $\Omega$
- 3.0V to 3.6V V+ Operation
- Control Input is 1.8-V Logic Compatible
- 6-bump, 0.5mm pitch CSP Package (1.45mm x 0.95mm x 0.5mm)
- Latch-Up Performance Exceeds 100 mA Per JESD 78, Class II
- ESD Performance Tested Per JESD 22
  - 2000-V Human-Body Model (A114-B, Class II)
  - 500-V Charged-Device Model (C101)
- ESD Performance (SLEEVE, RING2)
  - $\pm$ 8-kV Contact Discharge (IEC 61000-4-2)

### APPLICATIONS

- Cellular phones
- PDAs
- Portable Instrumentation
- Digital Still Cameras
- Portable Navigation Devices

### PINOUT



### DESCRIPTION

The TS3A26746E is a 2 x 2 cross-point switch that is used to interchange the Ground and MIC connections on a headphone connector. The Ground switch has an ultra low  $R_{ON}$  of <0.1 $\Omega$  to minimize voltage drop across it, preventing undesired increases in headphone ground reference voltage. The switch state is controlled via the SEL input. When SEL=High, GND is connected to RING2 and MIC is connected to SLEEVE. When SEL=Low, GND is connected to SLEEVE and MIC is connected to RING2. An internal 100k pull-up resistor on the SEL input sets the default state of the switch.

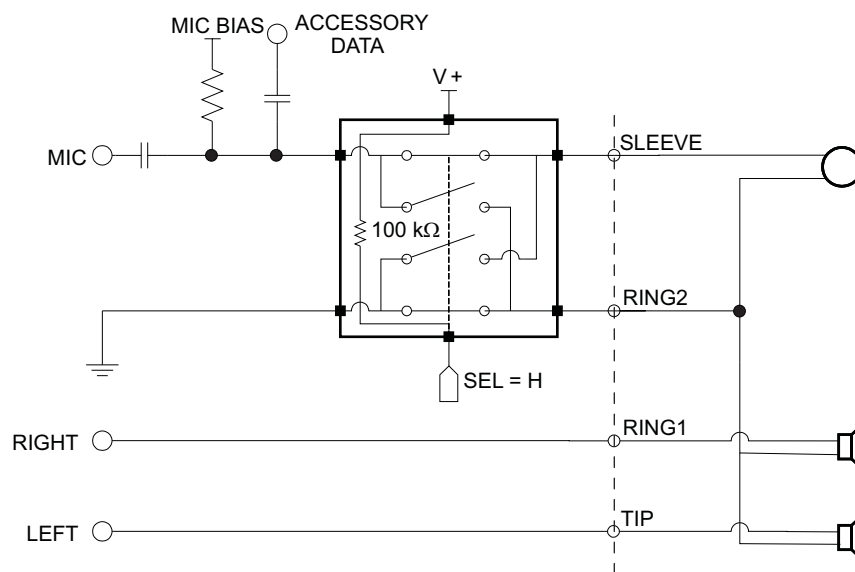


Please be aware that an important notice concerning availability, standard warranty, and use in critical applications of Texas Instruments semiconductor products and disclaimers thereto appears at the end of this data sheet.

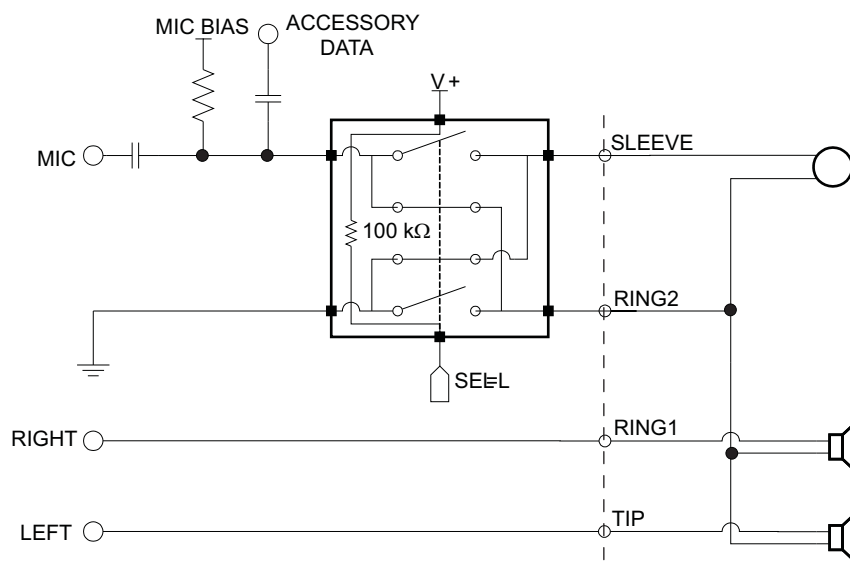


These devices have limited built-in ESD protection. The leads should be shorted together or the device placed in conductive foam during storage or handling to prevent electrostatic damage to the MOS gates.

## TYPICAL APPLICATION BLOCK DIAGRAM

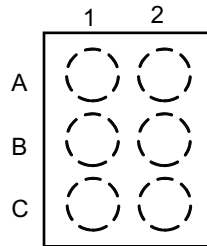


**Figure 1. Standard Headphone Configuration (SEL=H)**



**Figure 2. Alternate Headphone Configuration (SEL=L)**

### PINOUT



### TERMINAL ASSIGNMENTS

	1	2
<b>A</b>	SEL	V+
<b>B</b>	MIC	SLEEVE
<b>C</b>	GND	RING2

### PIN FUNCTIONS

BALL #	PIN		DESCRIPTION
	NAME	TYPE	
A1	SEL	Input	Control Input
A2	V+	Power	Supply Voltage
B1	MIC	I/O	MIC
B2	SLEEVE	I/O	Sleeve Connection on Headphone Jack
C1	GND	Ground	Ground
C2	RING2	I/O	2 <sup>nd</sup> Ring Connection on Headphone Jack

**Table 1. FUNCTION TABLE**

SEL	MIC to SLEEVE, GND to RING2	MIC to RING2, GND to SLEEVE
L	OFF	ON
H	ON	OFF

# TS3A26746E

SCDS313C – FEBRUARY 2011 – REVISED MAY 2013

[www.ti.com](http://www.ti.com)

## ABSOLUTE MAXIMUM RATINGS<sup>(1)(2)</sup>

over operating free-air temperature range (unless otherwise noted)

		MIN	MAX	UNIT
$V_+$	Supply voltage range <sup>(3)</sup>	–0.3	4.0	V
$V_{MIC}$ $V_{SLEEVE}$ $V_{RING2}$	Analog voltage range <sup>(3)</sup>	–0.3	4.0	V
$I_K$	Analog port diode current $V_{MIC}, V_{SLEEVE}, V_{RING2} < 0$ V	–50		mA
$V_I$	Digital input voltage range	–0.3	4.0	V
$I_{IK}$	Digital input clamp current <sup>(3)</sup> $V_I < 0$ V	–50		mA
$I_+$	Continuous current through $V_+$		100	mA
$I_{GND}$	Continuous current through GND	–100		mA
$\theta_{JA}$	Package thermal impedance <sup>(4)</sup> YZP package		102	°C/W
$T_{stg}$	Storage temperature range	–65	150	°C

- (1) Stresses above these ratings may cause permanent damage. Exposure to absolute maximum conditions for extended periods may degrade device reliability. These are stress ratings only, and functional operation of the device at these or any other conditions beyond those specified is not implied.
- (2) The algebraic convention, whereby the most negative value is a minimum and the most positive value is a maximum.
- (3) All voltages are with respect to ground, unless otherwise specified.
- (4) The package thermal impedance is calculated in accordance with JESD 51-7.

## ELECTRICAL CHARACTERISTICS FOR 3.3 V SUPPLY<sup>(1)</sup>

 $V_+ = 3$  V to 3.6 V,  $T_A = -40^\circ\text{C}$  to  $85^\circ\text{C}$  (unless otherwise noted)

PARAMETER	TEST CONDITIONS	$T_A$	$V_+$	MIN	TYP	MAX	UNIT
<b>MIC SWITCH</b>							
$V_{MIC}, V_{SLEEVE}, V_{RING2}$	Analog signal range			0		$V_+$	V
$r_{on}$	ON-state resistance $0 \leq V_{SLEEVE}$ or $V_{RING2} \leq V_+, I_{MIC} = -32$ mA	Switch ON 25°C Full	3 V		5	8 10	$\Omega$
$r_{on(flat)}$	ON-state resistance flatness $0 \leq V_{SLEEVE}$ or $V_{RING2} \leq V_+, I_{MIC} = -32$ mA	Switch ON 25°C Full	3 V		1	2.3 2.5	$\Omega$
$I_{SLEEVE(OFF)}, I_{RING2(OFF)}$	SLEEVE, RING2 OFF leakage current $V_{SLEEVE}$ or $V_{RING2} = 1$ V, $V_{MIC} = 3$ V, or $V_{SLEEVE}$ or $V_{RING2} = 3$ V, $V_{MIC} = 1$ V	Switch OFF 25°C Full	3.6 V	–0.5	0.05	0.5 2	$\mu\text{A}$
$I_{MIC(OFF)}$	MIC OFF leakage current $V_{SLEEVE}$ or $V_{RING2} = 3$ V, $V_{MIC} = 1$ V, or $V_{SLEEVE}$ or $V_{RING2} = 1$ V, $V_{MIC} = 3$ V	Switch OFF 25°C Full	3.6 V	–1	0.1	1 2	$\mu\text{A}$
$I_{SLEEVE(ON)}, I_{RING2(ON)}$	SLEEVE, RING2 ON leakage current $V_{SLEEVE}$ or $V_{RING2} = 1$ V, $V_{MIC} = \text{Open}$ , or $V_{SLEEVE}$ or $V_{RING2} = 3$ V, $V_{MIC} = \text{Open}$	Switch ON 25°C Full	3.6 V	–2	0.5	2 2	$\mu\text{A}$
$I_{MIC(ON)}$	MIC ON leakage current $V_{SLEEVE}$ or $V_{RING2} = \text{Open}$ V, $V_{MIC} = 1$ V, or $V_{SLEEVE}$ or $V_{RING2} = \text{Open}$ , $V_{MIC} = 3$ V	Switch ON 25°C Full	3.6 V	–2	0.5	2 2	$\mu\text{A}$
<b>GND SWITCH</b>							
$r_{on}$	ON-state resistance $I_{SLEEVE}$ or $I_{RING2} = +32$ mA, $V_{GND} = 0$ V, $I_{GND} = -32$ mA	Switch ON 25°C Full	3 V		0.08	0.09 0.11	$\Omega$
$I_{SLEEVE(OFF)}, I_{RING2(OFF)}$	SLEEVE, RING2 OFF leakage current $V_{SLEEVE}$ or $V_{RING2} = 3$ V and $V_{GND} = 0$ V	Switch OFF 25°C Full	3.6 V	–0.5	0.05	0.5 1	$\mu\text{A}$
$I_{SLEEVE(PWROFF)}, I_{RING2(PWROFF)}$	SLEEVE, RING2 OFF leakage current $V_{SLEEVE}$ or $V_{RING2} = 0$ to 3.6 V and $V_{GND} = 0$ V	Switch OFF 25°C Full	0 V	–1	0.5	1 10	$\mu\text{A}$

- (1) The algebraic convention, whereby the most negative value is a minimum and the most positive value is a maximum

**ELECTRICAL CHARACTERISTICS FOR 3.3 V SUPPLY<sup>(1)</sup> (continued)**
 $V_+ = 3\text{ V to }3.6\text{ V}$ ,  $T_A = -40^\circ\text{C to }85^\circ\text{C}$  (unless otherwise noted)

PARAMETER		TEST CONDITIONS		T <sub>A</sub>	V <sub>+</sub>	MIN	TYP	MAX	UNIT
DIGITAL CONTROL INPUTS (SEL)									
V <sub>IH</sub>	Input logic high			Full	3.6 V	1.2		3.6	V
V <sub>IL</sub>	Input logic low			Full	3.6 V	0		0.4	V
I <sub>IH</sub>	Input logic high leakage current	V <sub>I</sub> = V <sub>+</sub>	25°C	3.6 V	−1	0.05	1	μA	
			Full		−2	2			
I <sub>IL</sub>	Input logic low leakage current	V <sub>I</sub> = 0 V	25°C	3.6 V	−38	−36	−34	μA	
			Full		−45	−30			
DYNAMIC									
t <sub>ON</sub>	Turn-on time	V <sub>MIC</sub> = V <sub>+</sub> , R <sub>L</sub> = 50 Ω	C <sub>L</sub> = 35 pF	25°C	3.3 V	150	200	ns	
				Full	3 V to 3.6 V		250		
t <sub>OFF</sub>	Turn-off time	V <sub>MIC</sub> = V <sub>+</sub> , R <sub>L</sub> = 50 Ω	C <sub>L</sub> = 35 pF	25°C	3.3 V	5	10	ns	
				Full	3 V to 3.6 V		15		
t <sub>BBM</sub>	Break-before-make time	V <sub>MIC</sub> = V <sub>+</sub>	25°C		3.3 V	70	330	ns	
			Full		3 V to 3.6 V		330		
C <sub>MIC</sub>	MIC capacitance	SEL=High	25°C		3.3 V	100	140	pF	
		SEL=Low	25°C		3.3 V	100	140	pF	
C <sub>SLEEVE</sub>	SLEEVE / RING2 capacitance	SEL=High	25°C		3.3 V	100	140	pF	
		SEL=Low	25°C		3.3 V	100	140	pF	
C <sub>I</sub>	Digital input capacitance	V <sub>I</sub> = V <sub>+</sub> or 0 V	25°C		3.3 V	4.0		pF	
THD	Total harmonic distortion	R <sub>L</sub> = 1k Ω, V = 30 mVPP	f = 20 Hz to 20 kHz	25°C	3.3 V	0.01%			
SUPPLY									
V <sub>+</sub>	Power Supply Voltage					3.0	3.3	3.6	V
I <sub>+</sub>	Positive supply current	V <sub>I</sub> = V <sub>+</sub>	25°C	3.6 V	0.01	1	μA		
			Full			5			
		V <sub>I</sub> = 0 V	25°C		40	41	μA		
			Full			50			

## OPERATIONAL CHARACTERISTICS

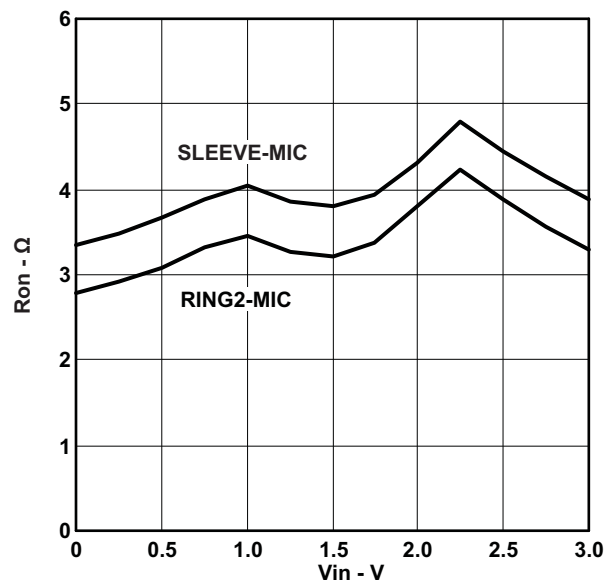
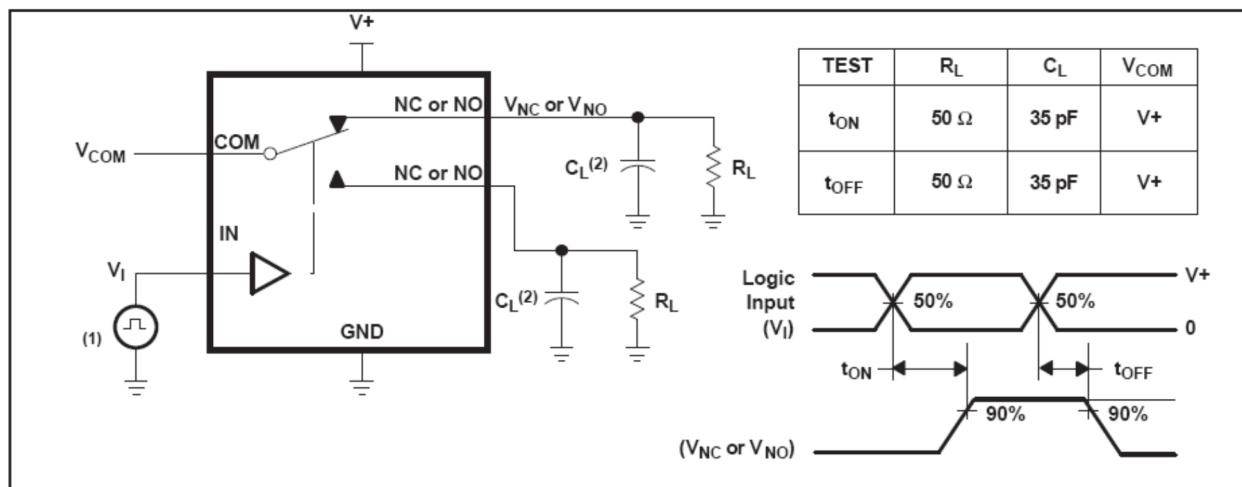


Figure 3.  $R_{ON}$  vs  $V_{IN}$  (MIC Switch)

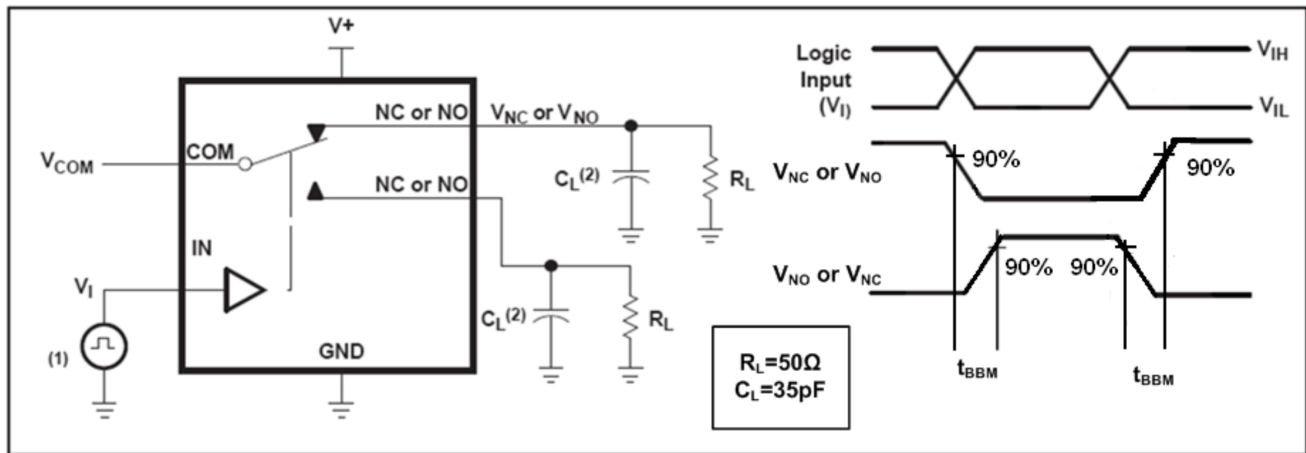
## PARAMETER MEASUREMENT INFORMATION



- A. All input pulses are supplied by generators having the following characteristics: PRR  $\leq$  10 MHz,  $Z_O = 50 \Omega$ ,  $t_r < 5$  ns,  $t_f < 5$  ns.
- B.  $C_L$  includes probe and jig capacitance.

Figure 4. Turn-On ( $t_{ON}$ ) and Turn-Off Time ( $t_{OFF}$ )

## PARAMETER MEASUREMENT INFORMATION (continued)



- A.  $C_L$  includes probe and jig capacitance.
- B. All input pulses are supplied by generators having the following characteristics: PRR  $\leq 10$  MHz,  $Z_O = 50\Omega$ ,  $t_r < 5$  ns,  $t_f < 5$  ns.

Figure 5. Break-Before-Make Time ( $t_{BBM}$ )

## REVISION HISTORY

Changes from Revision B (November 2011) to Revision C	Page
• Replaced 1 page preview with full document. ....	<a href="#">1</a>

## PACKAGING INFORMATION

Orderable Device	Status (1)	Package Type	Package Drawing	Pins	Package Qty	Eco Plan (2)	Lead/Ball Finish	MSL Peak Temp (3)	Op Temp (°C)	Device Marking (4/5)	Samples
TS3A26746EYZPR	ACTIVE	DSBGA	YZP	6	3000	Green (RoHS & no Sb/Br)	SNAGCU	Level-1-260C-UNLIM	-40 to 85	7N	<a href="#">Samples</a>

(1) The marketing status values are defined as follows:

**ACTIVE:** Product device recommended for new designs.

**LIFEBUY:** TI has announced that the device will be discontinued, and a lifetime-buy period is in effect.

**NRND:** Not recommended for new designs. Device is in production to support existing customers, but TI does not recommend using this part in a new design.

**PREVIEW:** Device has been announced but is not in production. Samples may or may not be available.

**OBSOLETE:** TI has discontinued the production of the device.

(2) Eco Plan - The planned eco-friendly classification: Pb-Free (RoHS), Pb-Free (RoHS Exempt), or Green (RoHS & no Sb/Br) - please check <http://www.ti.com/productcontent> for the latest availability information and additional product content details.

**TBD:** The Pb-Free/Green conversion plan has not been defined.

**Pb-Free (RoHS):** TI's terms "Lead-Free" or "Pb-Free" mean semiconductor products that are compatible with the current RoHS requirements for all 6 substances, including the requirement that lead not exceed 0.1% by weight in homogeneous materials. Where designed to be soldered at high temperatures, TI Pb-Free products are suitable for use in specified lead-free processes.

**Pb-Free (RoHS Exempt):** This component has a RoHS exemption for either 1) lead-based flip-chip solder bumps used between the die and package, or 2) lead-based die adhesive used between the die and leadframe. The component is otherwise considered Pb-Free (RoHS compatible) as defined above.

**Green (RoHS & no Sb/Br):** TI defines "Green" to mean Pb-Free (RoHS compatible), and free of Bromine (Br) and Antimony (Sb) based flame retardants (Br or Sb do not exceed 0.1% by weight in homogeneous material)

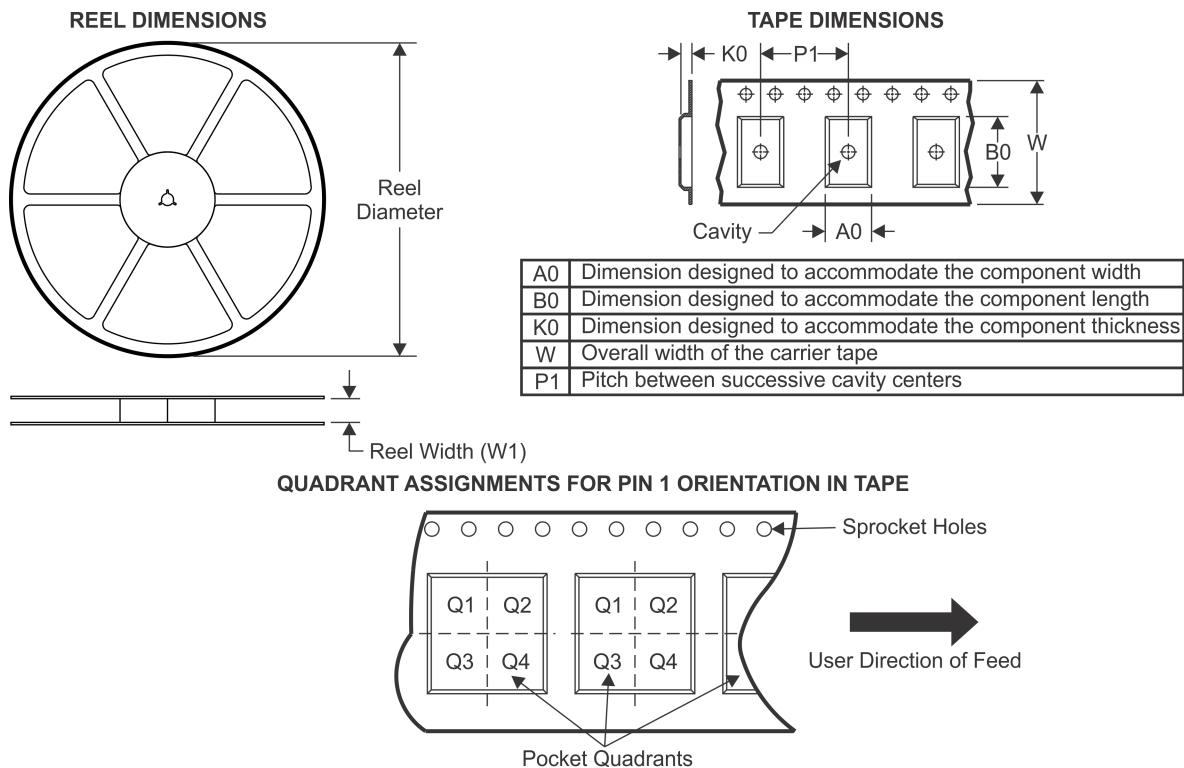
(3) MSL, Peak Temp. -- The Moisture Sensitivity Level rating according to the JEDEC industry standard classifications, and peak solder temperature.

(4) There may be additional marking, which relates to the logo, the lot trace code information, or the environmental category on the device.

(5) Multiple Device Markings will be inside parentheses. Only one Device Marking contained in parentheses and separated by a "~" will appear on a device. If a line is indented then it is a continuation of the previous line and the two combined represent the entire Device Marking for that device.

**Important Information and Disclaimer:** The information provided on this page represents TI's knowledge and belief as of the date that it is provided. TI bases its knowledge and belief on information provided by third parties, and makes no representation or warranty as to the accuracy of such information. Efforts are underway to better integrate information from third parties. TI has taken and continues to take reasonable steps to provide representative and accurate information but may not have conducted destructive testing or chemical analysis on incoming materials and chemicals. TI and TI suppliers consider certain information to be proprietary, and thus CAS numbers and other limited information may not be available for release.

In no event shall TI's liability arising out of such information exceed the total purchase price of the TI part(s) at issue in this document sold by TI to Customer on an annual basis.

**TAPE AND REEL INFORMATION**


\*All dimensions are nominal

Device	Package Type	Package Drawing	Pins	SPQ	Reel Diameter (mm)	Reel Width W1 (mm)	A0 (mm)	B0 (mm)	K0 (mm)	P1 (mm)	W (mm)	Pin1 Quadrant
TS3A26746EYZPR	DSBGA	YZP	6	3000	180.0	8.4	1.02	1.52	0.63	4.0	8.0	Q1

## TAPE AND REEL BOX DIMENSIONS

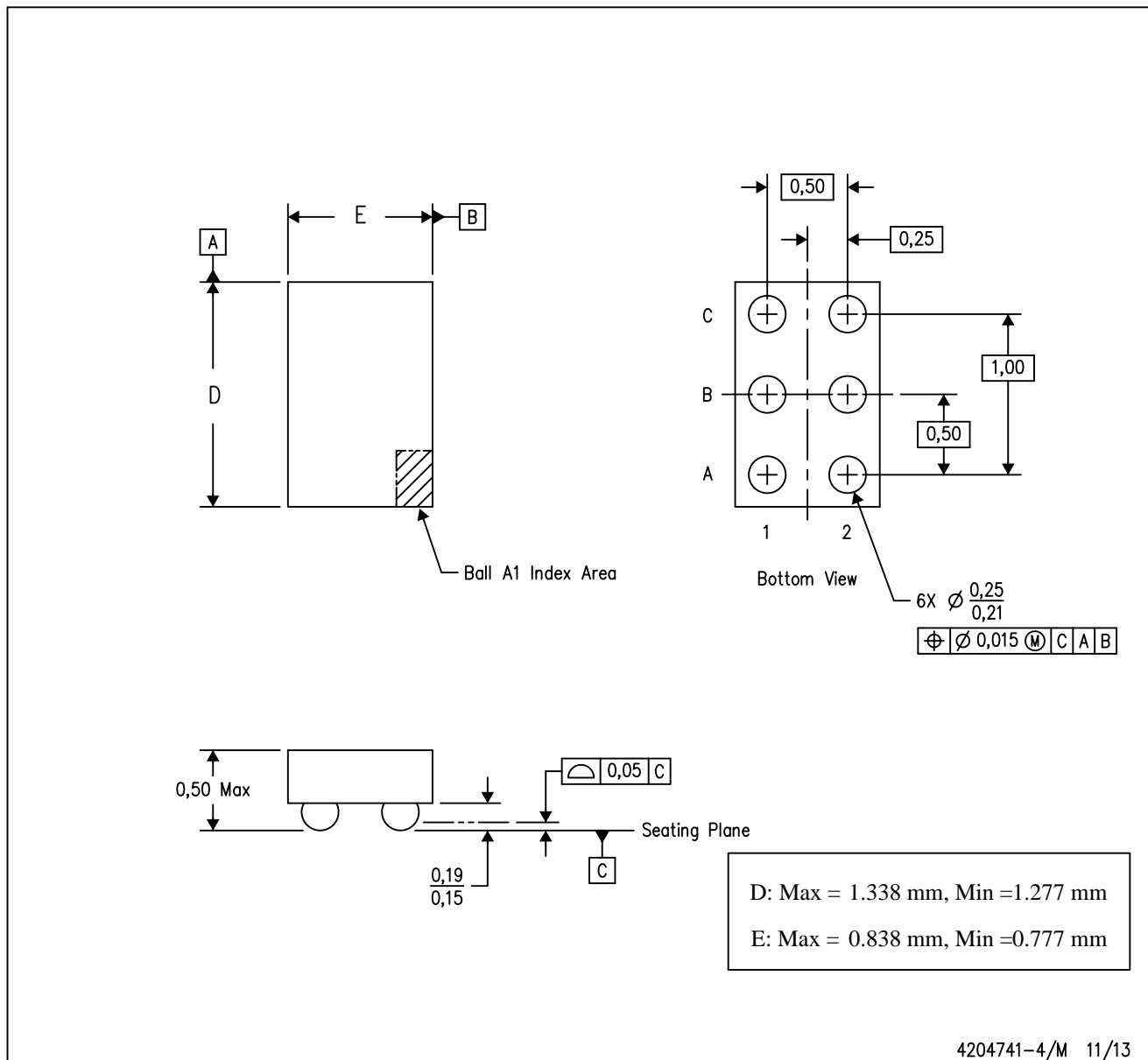


\*All dimensions are nominal

Device	Package Type	Package Drawing	Pins	SPQ	Length (mm)	Width (mm)	Height (mm)
TS3A26746EYZPR	DSBGA	YZP	6	3000	182.0	182.0	17.0

YZP (R-XBGA-N6)

DIE-SIZE BALL GRID ARRAY



- NOTES:
- A. All linear dimensions are in millimeters. Dimensioning and tolerancing per ASME Y14.5M-1994.
  - B. This drawing is subject to change without notice.
  - C. NanoFree™ package configuration.

## IMPORTANT NOTICE

Texas Instruments Incorporated and its subsidiaries (TI) reserve the right to make corrections, enhancements, improvements and other changes to its semiconductor products and services per JESD46, latest issue, and to discontinue any product or service per JESD48, latest issue. Buyers should obtain the latest relevant information before placing orders and should verify that such information is current and complete. All semiconductor products (also referred to herein as "components") are sold subject to TI's terms and conditions of sale supplied at the time of order acknowledgment.

TI warrants performance of its components to the specifications applicable at the time of sale, in accordance with the warranty in TI's terms and conditions of sale of semiconductor products. Testing and other quality control techniques are used to the extent TI deems necessary to support this warranty. Except where mandated by applicable law, testing of all parameters of each component is not necessarily performed.

TI assumes no liability for applications assistance or the design of Buyers' products. Buyers are responsible for their products and applications using TI components. To minimize the risks associated with Buyers' products and applications, Buyers should provide adequate design and operating safeguards.

TI does not warrant or represent that any license, either express or implied, is granted under any patent right, copyright, mask work right, or other intellectual property right relating to any combination, machine, or process in which TI components or services are used. Information published by TI regarding third-party products or services does not constitute a license to use such products or services or a warranty or endorsement thereof. Use of such information may require a license from a third party under the patents or other intellectual property of the third party, or a license from TI under the patents or other intellectual property of TI.

Reproduction of significant portions of TI information in TI data books or data sheets is permissible only if reproduction is without alteration and is accompanied by all associated warranties, conditions, limitations, and notices. TI is not responsible or liable for such altered documentation. Information of third parties may be subject to additional restrictions.

Resale of TI components or services with statements different from or beyond the parameters stated by TI for that component or service voids all express and any implied warranties for the associated TI component or service and is an unfair and deceptive business practice. TI is not responsible or liable for any such statements.

Buyer acknowledges and agrees that it is solely responsible for compliance with all legal, regulatory and safety-related requirements concerning its products, and any use of TI components in its applications, notwithstanding any applications-related information or support that may be provided by TI. Buyer represents and agrees that it has all the necessary expertise to create and implement safeguards which anticipate dangerous consequences of failures, monitor failures and their consequences, lessen the likelihood of failures that might cause harm and take appropriate remedial actions. Buyer will fully indemnify TI and its representatives against any damages arising out of the use of any TI components in safety-critical applications.

In some cases, TI components may be promoted specifically to facilitate safety-related applications. With such components, TI's goal is to help enable customers to design and create their own end-product solutions that meet applicable functional safety standards and requirements. Nonetheless, such components are subject to these terms.

No TI components are authorized for use in FDA Class III (or similar life-critical medical equipment) unless authorized officers of the parties have executed a special agreement specifically governing such use.

Only those TI components which TI has specifically designated as military grade or "enhanced plastic" are designed and intended for use in military/aerospace applications or environments. Buyer acknowledges and agrees that any military or aerospace use of TI components which have **not** been so designated is solely at the Buyer's risk, and that Buyer is solely responsible for compliance with all legal and regulatory requirements in connection with such use.

TI has specifically designated certain components as meeting ISO/TS16949 requirements, mainly for automotive use. In any case of use of non-designated products, TI will not be responsible for any failure to meet ISO/TS16949.

### Products

Audio	<a href="http://www.ti.com/audio">www.ti.com/audio</a>
Amplifiers	<a href="http://amplifier.ti.com">amplifier.ti.com</a>
Data Converters	<a href="http://dataconverter.ti.com">dataconverter.ti.com</a>
DLP® Products	<a href="http://www.dlp.com">www.dlp.com</a>
DSP	<a href="http://dsp.ti.com">dsp.ti.com</a>
Clocks and Timers	<a href="http://www.ti.com/clocks">www.ti.com/clocks</a>
Interface	<a href="http://interface.ti.com">interface.ti.com</a>
Logic	<a href="http://logic.ti.com">logic.ti.com</a>
Power Mgmt	<a href="http://power.ti.com">power.ti.com</a>
Microcontrollers	<a href="http://microcontroller.ti.com">microcontroller.ti.com</a>
RFID	<a href="http://www.ti-rfid.com">www.ti-rfid.com</a>
OMAP Applications Processors	<a href="http://www.ti.com/omap">www.ti.com/omap</a>
Wireless Connectivity	<a href="http://www.ti.com/wirelessconnectivity">www.ti.com/wirelessconnectivity</a>

### Applications

Automotive and Transportation	<a href="http://www.ti.com/automotive">www.ti.com/automotive</a>
Communications and Telecom	<a href="http://www.ti.com/communications">www.ti.com/communications</a>
Computers and Peripherals	<a href="http://www.ti.com/computers">www.ti.com/computers</a>
Consumer Electronics	<a href="http://www.ti.com/consumer-apps">www.ti.com/consumer-apps</a>
Energy and Lighting	<a href="http://www.ti.com/energy">www.ti.com/energy</a>
Industrial	<a href="http://www.ti.com/industrial">www.ti.com/industrial</a>
Medical	<a href="http://www.ti.com/medical">www.ti.com/medical</a>
Security	<a href="http://www.ti.com/security">www.ti.com/security</a>
Space, Avionics and Defense	<a href="http://www.ti.com/space-avionics-defense">www.ti.com/space-avionics-defense</a>
Video and Imaging	<a href="http://www.ti.com/video">www.ti.com/video</a>

### TI E2E Community

[e2e.ti.com](http://e2e.ti.com)