

CC1101DK Quick Start Guide

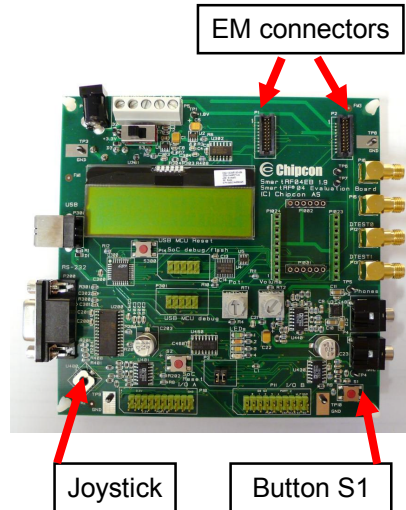
Opening the box and running the Packet Error Rate Test

1. Kit Contents



2 x SmartRF04EB
2 x CC1101EM
2 x Antennas (433 MHz antennas shown)
2 x USB cables
4 x SMA male to BNC female converters
Documentation

2. SmartRF04EB Overview



3. Plug EM into SmartRF04EB



Insert a CC1101EM (EM) with an antenna into the SmartRF04EB (EB). The connectors will only fit in one position, so that the EM cannot be inserted the wrong way.

Handle the EM with care. Observe precautions for handling electrostatic sensitive devices.

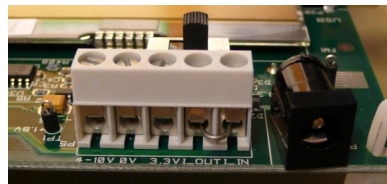
4a. Power: Battery



There are three different ways of applying power to the EB:

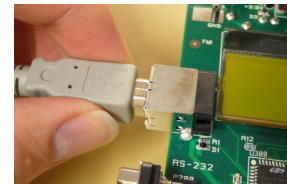
The first method involves using a battery, for instance a 9V battery (not included in the kit) connected to the connector on the bottom side of the board.

4b. Power: DC/External



The second method applies DC power using the DC input jack (right in picture, centre is +, sleeve is ground), or by connecting a 4-10V voltage source between the 4-10V and 0V terminals of the power connector (left in picture). It is also possible to connect a 3.3V voltage source between the 3.3V and 0V terminals. The on-board voltage regulators will be bypassed if the 3.3V input terminal is used.

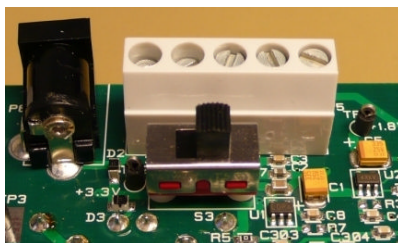
4c. Power: USB



The EB can also be powered from the USB bus.

Note that if multiple power sources are connected, the source with the highest voltage will power the EB. This means that you should disconnect any attached battery when using a lab supply or USB power; otherwise the battery will be drained.

5. Set Power Switch



If a 3.3V source is used as described in 4b above, the switch should be set to the leftmost position. For all other cases, the switch should be set to the rightmost position. This switch can be used to turn off the EB by switching it to the opposite position of that used to turn it on.

6. Packet Error Rate Test



When power is applied to the board, the PER test program will start. You should see the text shown above on the LCD display on both evaluation boards.

Press the button marked S1 (lower right corner) to continue.

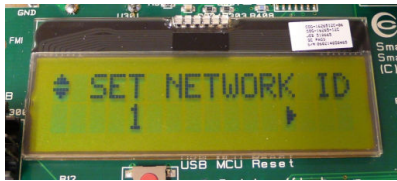
7. Set Frequency Band



Select the desired frequency band of operation by using the joystick. The frequency should match the evaluation module and antenna you are using.

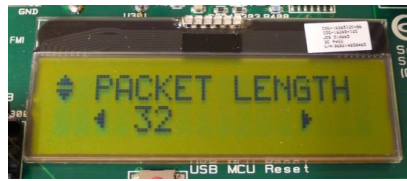
Note that the value shown in the display is also the selected value. There is no need to press a button to select or activate the selection.

8. Set Network ID



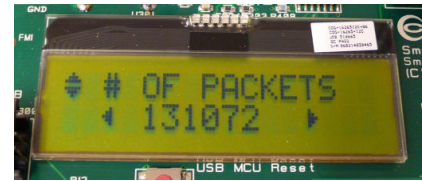
Push the joystick down to display the screen shown above. This lets you set the ID of the node in case you need to run several PER tests simultaneously and you have multiple development kits. Leave this set to 1 for now.

9. Packet Length



Push the joystick down to display the screen shown above. This lets you set the length of the packets to be transmitted. The packet length will affect the measured packet error rate. Push the joystick left or right to select the packet length you want to use.

10. number of Packets



Push the joystick down to display the screen shown above. This lets you set the number of packets to be transmitted. Set this to the desired value using the joystick.

11. Select RF Settings



Push the joystick down to display the screen shown above. This lets you select preset RF configurations, including modulation and data rate
 Preset 0: GFSK, 1.2 kBaud
 Preset 1: GFSK, 10 kBaud
 Preset 2: GFSK, 38.4 kBaud
 Preset 3: GFSK, 250 kBaud

12. Select Mode



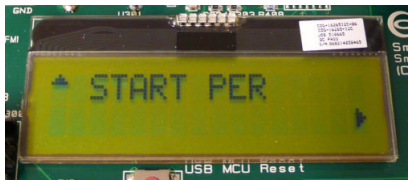
Push the joystick down to display the screen shown above. Use the joystick to select master mode. The EB you have configured now will be the master in the PER test.

13. Configure 2nd EB



Perform steps 3 through 11 on the second EB. Push the joystick down until you get the display shown above. Leave this EB in slave mode.

14. Start PER



Push the joystick down on both EBs, and the screen shown above is displayed. Push the joystick right on the slave EB first, and then push the joystick right on the master EB. The PER test will start when the two nodes have successfully connected.

Note that the PER test uses 10 dBm as default output power, so the EBs should be placed at least 1m apart to avoid saturation of the receiver.

15. Run PER Test



The uppermost line of the LCD will show the PER for packets transmitted from the slave to the master, while the second line will show the PER for packets transmitted from the master to the slave.

The PER test will end when the number of packets you selected in step 10 is reached or if 100 consecutive packets are lost.

16. References

Please visit www.ti.com and

<http://focus.ti.com/docs/toolsw/folders/print/cc1101dk433.html>

<http://focus.ti.com/docs/toolsw/folders/print/cc1101dk868-915.html>

Download the CC1101DK User Manual, the SmartRF™ Studio software, examples, as well as datasheets, reference designs and application notes.

You will also find a lot of information on the TI E2E forum at <http://e2e.ti.com>

We hope that you will enjoy working with the CC1101 device.

SmartRF™ Studio

1. Download and Install

Before connecting the EB to your PC, download SmartRF™ Studio from www.ti.com/smarterstudio. Install the program and follow the instructions in the wizard.

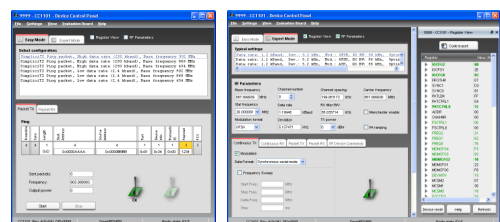
Connect the EB with a CC1101EM to the PC using the USB cable and install the USB driver as described in the manual.

2. Launch SmartRF Studio



Launch SmartRF Studio and double click on the highlighted CC1101 device icon to get complete control of the device from the PC.

3. Configure the Radio



You can now configure the radio, run tests, export register settings and run link tests with another CC1101 on a SmartRF04EB connected to the PC.

IMPORTANT NOTICE

Texas Instruments Incorporated and its subsidiaries (TI) reserve the right to make corrections, modifications, enhancements, improvements, and other changes to its products and services at any time and to discontinue any product or service without notice. Customers should obtain the latest relevant information before placing orders and should verify that such information is current and complete. All products are sold subject to TI's terms and conditions of sale supplied at the time of order acknowledgment.

TI warrants performance of its hardware products to the specifications applicable at the time of sale in accordance with TI's standard warranty. Testing and other quality control techniques are used to the extent TI deems necessary to support this warranty. Except where mandated by government requirements, testing of all parameters of each product is not necessarily performed.

TI assumes no liability for applications assistance or customer product design. Customers are responsible for their products and applications using TI components. To minimize the risks associated with customer products and applications, customers should provide adequate design and operating safeguards.

TI does not warrant or represent that any license, either express or implied, is granted under any TI patent right, copyright, mask work right, or other TI intellectual property right relating to any combination, machine, or process in which TI products or services are used. Information published by TI regarding third-party products or services does not constitute a license from TI to use such products or services or a warranty or endorsement thereof. Use of such information may require a license from a third party under the patents or other intellectual property of the third party, or a license from TI under the patents or other intellectual property of TI.

Reproduction of TI information in TI data books or data sheets is permissible only if reproduction is without alteration and is accompanied by all associated warranties, conditions, limitations, and notices. Reproduction of this information with alteration is an unfair and deceptive business practice. TI is not responsible or liable for such altered documentation. Information of third parties may be subject to additional restrictions.

Resale of TI products or services with statements different from or beyond the parameters stated by TI for that product or service voids all express and any implied warranties for the associated TI product or service and is an unfair and deceptive business practice. TI is not responsible or liable for any such statements.

TI products are not authorized for use in safety-critical applications (such as life support) where a failure of the TI product would reasonably be expected to cause severe personal injury or death, unless officers of the parties have executed an agreement specifically governing such use. Buyers represent that they have all necessary expertise in the safety and regulatory ramifications of their applications, and acknowledge and agree that they are solely responsible for all legal, regulatory and safety-related requirements concerning their products and any use of TI products in such safety-critical applications, notwithstanding any applications-related information or support that may be provided by TI. Further, Buyers must fully indemnify TI and its representatives against any damages arising out of the use of TI products in such safety-critical applications.

TI products are neither designed nor intended for use in military/aerospace applications or environments unless the TI products are specifically designated by TI as military-grade or "enhanced plastic." Only products designated by TI as military-grade meet military specifications. Buyers acknowledge and agree that any such use of TI products which TI has not designated as military-grade is solely at the Buyer's risk, and that they are solely responsible for compliance with all legal and regulatory requirements in connection with such use.

TI products are neither designed nor intended for use in automotive applications or environments unless the specific TI products are designated by TI as compliant with ISO/TS 16949 requirements. Buyers acknowledge and agree that, if they use any non-designated products in automotive applications, TI will not be responsible for any failure to meet such requirements.

Following are URLs where you can obtain information on other Texas Instruments products and application solutions:

Products		Applications	
Amplifiers	amplifier.ti.com	Audio	www.ti.com/audio
Data Converters	dataconverter.ti.com	Automotive	www.ti.com/automotive
DLP® Products	www.dlp.com	Communications and Telecom	www.ti.com/communications
DSP	dsp.ti.com	Computers and Peripherals	www.ti.com/computers
Clocks and Timers	www.ti.com/clocks	Consumer Electronics	www.ti.com/consumer-apps
Interface	interface.ti.com	Energy	www.ti.com/energy
Logic	logic.ti.com	Industrial	www.ti.com/industrial
Power Mgmt	power.ti.com	Medical	www.ti.com/medical
Microcontrollers	microcontroller.ti.com	Security	www.ti.com/security
RFID	www.ti-rfid.com	Space, Avionics & Defense	www.ti.com/space-avionics-defense
RF/IF and ZigBee® Solutions	www.ti.com/lprf	Video and Imaging	www.ti.com/video
		Wireless	www.ti.com/wireless-apps