

AN-1595 LM3677 Evaluation Board

1 Introduction

The LM3677 evaluation board is a working demonstration of a step down DC-DC converter. This application note contains information about the evaluation board. For further information on buck converter topology, device electrical characteristics, and component selection please refer to the data sheet.

2 General Description

The LM3677 converts high input voltages to lower output voltages with high efficiency through an inductor based switching topology. Automatic intelligent switching between PWM low-noise and PFM low-current mode offers improved system control. LM3677 is available in both fixed output voltage options and adjustable voltage options range from 1.2V to 3.3V in a DSBGA-5 package. The fixed output voltage options available in a DSBGA-5 package are 1.2V, 1.3V, 1.5V, 1.6V, 1.8V, 2.5V, 2.8V, and 3.3V. The LM3677 is also available in a 6-pin USON package with fixed voltage options 1.2V, 1.5V, 1.8V, and 1.82V.

3 Operating Conditions

- Recommended input voltage range:
 - $V_{IN} = 2.7V \text{ to } 4.5V$ for $1.1V \leq V_{OUT} < 1.5V$
 - $V_{IN} = 2.7V \text{ to } 5.5V$ for $1.5V \leq V_{OUT} < 1.8V$
 - $V_{IN} = (V_{OUT} + V_{DROPOUT}) \text{ to } 5.5V$ for $1.8V \leq V_{OUT} \leq 3.3V$
 - where $V_{DROPOUT} = I_{LOAD} * (R_{DS(on), PFET} + R_{INDUCTOR})$
- Recommended load current: $0 \text{ mA} \leq I_{OUT} \leq 600 \text{ mA}$
- Ambient temperature (T_A) range: $-30^{\circ}C \text{ to } +85^{\circ}C$
- Junction temperature (T_J) range: $-30^{\circ}C \text{ to } +125^{\circ}C$

4 Typical Application

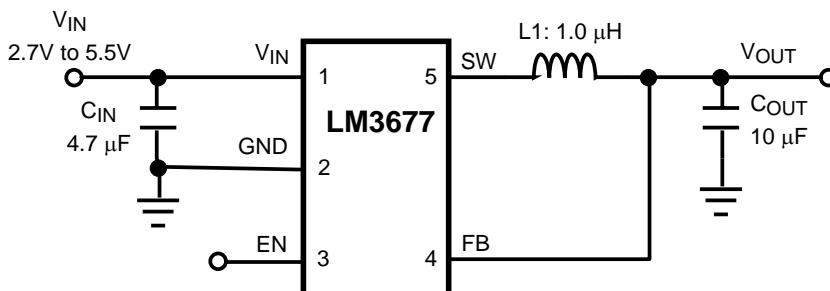
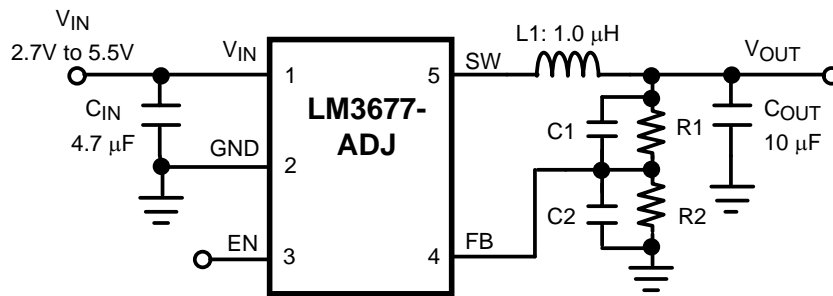


Figure 1. Fixed Output Voltage--Typical Application Circuit


Figure 2. Adjustable Output Voltage—Typical Application Circuit

5 Output Voltage Selection for LM3677TL-ADJ

The output voltage of the adjustable parts can be programmed through the resistor network connected from V_{OUT} to FB to GND. The resistor from FB to GND (R_2) should be 200 kΩ to keep the current drawn through this network well below 16 μA quiescent current level (PFM mode) but large enough that it is not susceptible to noise. If R_2 is 200 kΩ, and given the V_{FB} is 0.5V, then the current through the resistor feedback network will be 2.5 μA. The output voltage of the adjustable parts ranges from 1.2V to 3.3V. The output voltage formula is:

$$V_{OUT} = V_{FB} \left(\frac{R_1}{R_2} + 1 \right) \quad (1)$$

V_{OUT} : output voltage (V)

V_{FB} : feedback voltage (0.5V typical)

R_1 : feedback resistor from V_{OUT} to FB(Ω)

R_2 : feedback resistor from FB to GND (Ω)

For the fixed output voltage parts the feedback resistors are internal and R_1 is 0Ω.

The bypass capacitors C_1 and C_2 (labeled C_3 and C_4 on Evaluation Board) in parallel with the feedback resistors are chosen for increased stability. Below are the formulas for C_1 and C_2 .

$$C_1 = \frac{1}{2 \times \pi \times R_1 \times 70 \text{ kHz}} \quad (2)$$

$$C_2 = \frac{1}{2 \times \pi \times R_2 \times 70 \text{ kHz}} \quad (3)$$

$$C_2 = \frac{1}{2 \times \pi \times R_2 \times 70 \text{ kHz}} \quad (4)$$

Table 1. LM3677-ADJ Configurations for Various V_{out} (Circuit of Figure 2)

V_{OUT} (V)	R_1 (kΩ)	R_2 (kΩ)	C_1 (pF)	C_2 (pF)	L (μH)	C_{IN} (μF)	C_{OUT} (μF)
1.2	280	200	8.2	none	1.0	4.7	10
1.3	320	200	8.2	none	1.0	4.7	10
1.5	357	178	6.8	none	1.0	4.7	10
1.6	442	200	5.6	none	1.0	4.7	10
1.8	464	178	5.6	none	1.0	4.7	10
2.5	402	100	6.0	none	1.0	4.7	10
2.8	464	100	5.6	24	1.0	4.7	10
3.3	562	100	5.6	24	1.0	4.7	10

6 Powering the LM3677 for Bench Measurements

When powering the LM3677 with a bench power supply, it is recommended to place a 100 μ F tantalum capacitor across the VIN and GND supply terminals of the bench power supply. This capacitor will reduce the input spike caused by the power supply and long power cables. The combination of the power supply and inductance within the power cables produce a large voltage spike that may damage the device. In addition, consideration must be given to the enable pin of the device. The enable should never be taken high, until minimum ensured operating voltage of 2.7V is reached. The enable pin should also never exceed the input voltage.

7 Connection Diagrams and Package Mark Information



Figure 3. 5-bump DSBGA Package

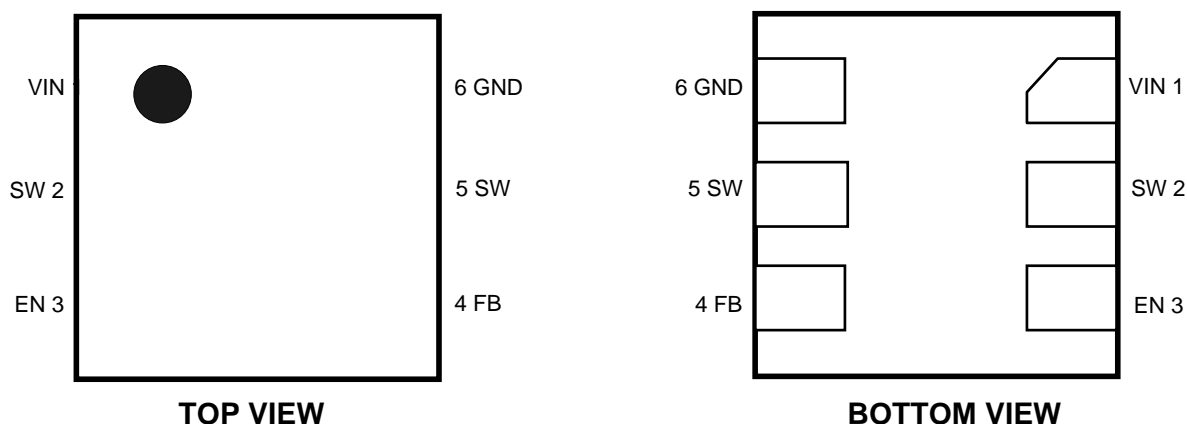


Figure 4. 6-pin USON Package

8 Pin Descriptions

Pin#	Name	Description
A1	1	V _{IN} Power supply input. Connect to the input filter capacitor.
A3	6	GND Ground pin.
C1	3	EN Enable pin. The device is in shutdown mode when voltage to this pin is < 0.4V and enabled when > 1.0V. Do not leave this pin floating.
C3	4	FB Feedback analog input. Connect to the output filter capacitor for fixed voltage versions. For adjustable version external resistor dividers are required (Figure 2). The internal resistor dividers are disabled for the adjustable version.
B2	2,5	SW Switching node connection to the internal PFET switch and NFET synchronous rectifier. Connect to an inductor with a saturation current rating that exceeds the 750 mA max. Switch Peak Current Limit Specification.

9 Evaluation Board Layout

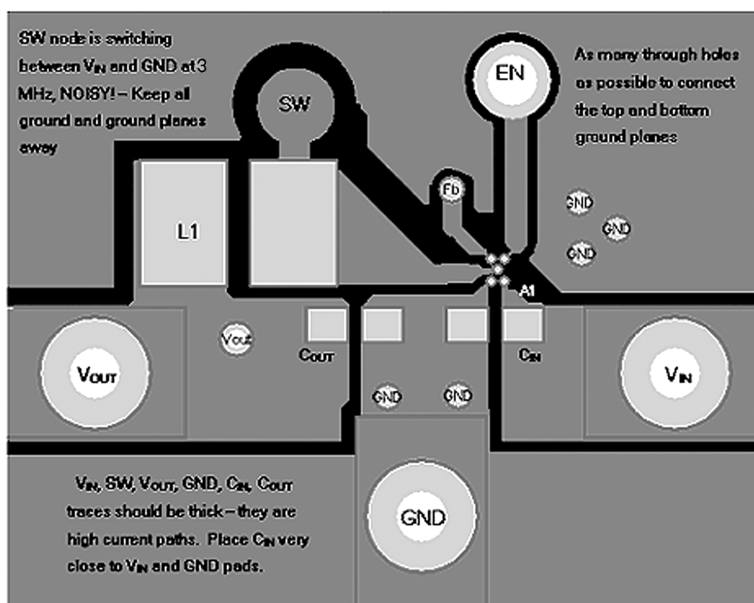


Figure 5. Top Layer (5-bump DSBGA)

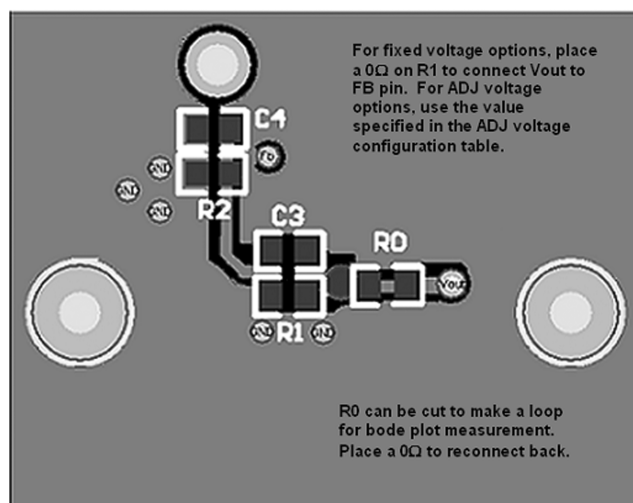


Figure 6. Bottom Layer (5-bump DSBGA)

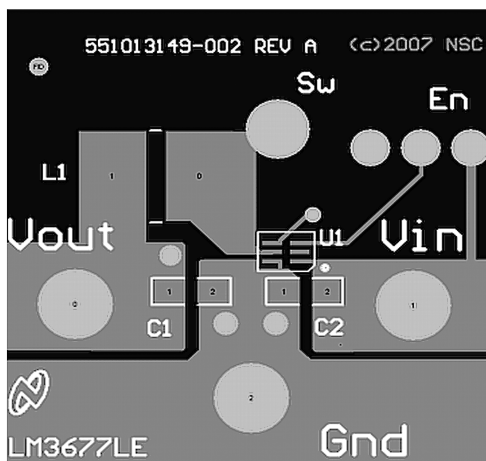


Figure 7. Top Layer (6-pin USON)

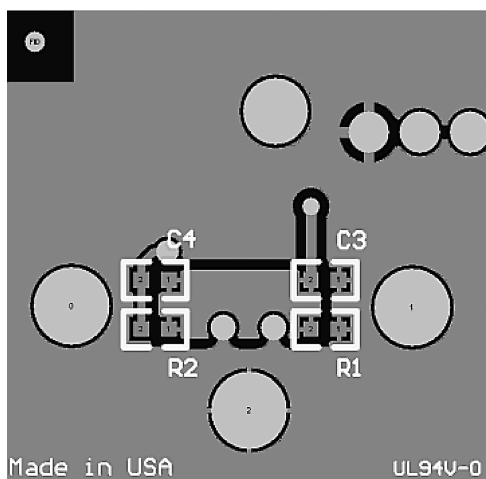


Figure 8. Bottom Layer (6-pin USON)

10 BOM For Common Configurations

	Manufacture	Manufacture #	Description
LM3677 - 1.8V FIXED			
C1 (input C)	TDK	C1608X5R0J475K	4.7 μ F, 6.3V, 0603, 10%
C2 (output C)	TDK	C1608X5R0J106K	10 μ F, 6.3V, 0603, 10%
L1 (inductor)	FDK	MIPSA2520D 1R0	1.0 μ H chip inductor
R1 (V_{OUT} to V_{FB})	Vishay	CRCW06030R00F	0 Ω , 0603, 1%
R2 (V_{FB} to GND)	None		
C3 (V_{OUT} to V_{FB})	None		
C4 (V_{FB} to GND)	None		
V_{IN} banana jack - red	Johnson Components	108-0902-001	connector, insulated banana jack (red)
V_{OUT} banana jack - yellow	Johnson Components	108-0907-001	connector, insulated banana jack (yellow)
GND banana jack - black	Johnson Components	108-0903-001	connector, insulated banana jack (black)

	Manufacture	Manufacture #	Description
LM3677 - 1.8V FIXED			
C1 (input C)	TDK	C1608X5R0J475K	4.7 μ F, 6.3V, 0603, 10%
C2 (output C)	TDK	C1608X5R0J106K	10 μ F, 6.3V, 0603, 10%
L1 (inductor)	FDK	MIPSA2520D 1R0	1.0 μ H chip inductor
R1 (V_{FB} to GND)	None		
R2 (V_{OUT} to V_{FB})	Vishay	CRCW06030R00F	0 Ω , 0603, 1%
C3 (V_{FB} to GND)	None		
C4 (V_{OUT} to V_{FB})	None		
V_{IN} banana jack - red	Johnson Components	108-0902-001	Connector, insulated banana jack (red)
V_{OUT} banana jack - yellow	Johnson Components	108-0907-001	Connector, insulated banana jack (yellow)
GND banana jack - black	Johnson Components	108-0903-001	Connector, insulated banana jack (black)

IMPORTANT NOTICE

Texas Instruments Incorporated and its subsidiaries (TI) reserve the right to make corrections, enhancements, improvements and other changes to its semiconductor products and services per JESD46, latest issue, and to discontinue any product or service per JESD48, latest issue. Buyers should obtain the latest relevant information before placing orders and should verify that such information is current and complete. All semiconductor products (also referred to herein as "components") are sold subject to TI's terms and conditions of sale supplied at the time of order acknowledgment.

TI warrants performance of its components to the specifications applicable at the time of sale, in accordance with the warranty in TI's terms and conditions of sale of semiconductor products. Testing and other quality control techniques are used to the extent TI deems necessary to support this warranty. Except where mandated by applicable law, testing of all parameters of each component is not necessarily performed.

TI assumes no liability for applications assistance or the design of Buyers' products. Buyers are responsible for their products and applications using TI components. To minimize the risks associated with Buyers' products and applications, Buyers should provide adequate design and operating safeguards.

TI does not warrant or represent that any license, either express or implied, is granted under any patent right, copyright, mask work right, or other intellectual property right relating to any combination, machine, or process in which TI components or services are used. Information published by TI regarding third-party products or services does not constitute a license to use such products or services or a warranty or endorsement thereof. Use of such information may require a license from a third party under the patents or other intellectual property of the third party, or a license from TI under the patents or other intellectual property of TI.

Reproduction of significant portions of TI information in TI data books or data sheets is permissible only if reproduction is without alteration and is accompanied by all associated warranties, conditions, limitations, and notices. TI is not responsible or liable for such altered documentation. Information of third parties may be subject to additional restrictions.

Resale of TI components or services with statements different from or beyond the parameters stated by TI for that component or service voids all express and any implied warranties for the associated TI component or service and is an unfair and deceptive business practice. TI is not responsible or liable for any such statements.

Buyer acknowledges and agrees that it is solely responsible for compliance with all legal, regulatory and safety-related requirements concerning its products, and any use of TI components in its applications, notwithstanding any applications-related information or support that may be provided by TI. Buyer represents and agrees that it has all the necessary expertise to create and implement safeguards which anticipate dangerous consequences of failures, monitor failures and their consequences, lessen the likelihood of failures that might cause harm and take appropriate remedial actions. Buyer will fully indemnify TI and its representatives against any damages arising out of the use of any TI components in safety-critical applications.

In some cases, TI components may be promoted specifically to facilitate safety-related applications. With such components, TI's goal is to help enable customers to design and create their own end-product solutions that meet applicable functional safety standards and requirements. Nonetheless, such components are subject to these terms.

No TI components are authorized for use in FDA Class III (or similar life-critical medical equipment) unless authorized officers of the parties have executed a special agreement specifically governing such use.

Only those TI components which TI has specifically designated as military grade or "enhanced plastic" are designed and intended for use in military/aerospace applications or environments. Buyer acknowledges and agrees that any military or aerospace use of TI components which have **not** been so designated is solely at the Buyer's risk, and that Buyer is solely responsible for compliance with all legal and regulatory requirements in connection with such use.

TI has specifically designated certain components as meeting ISO/TS16949 requirements, mainly for automotive use. In any case of use of non-designated products, TI will not be responsible for any failure to meet ISO/TS16949.

Products

Audio	www.ti.com/audio
Amplifiers	amplifier.ti.com
Data Converters	dataconverter.ti.com
DLP® Products	www.dlp.com
DSP	dsp.ti.com
Clocks and Timers	www.ti.com/clocks
Interface	interface.ti.com
Logic	logic.ti.com
Power Mgmt	power.ti.com
Microcontrollers	microcontroller.ti.com
RFID	www.ti-rfid.com
OMAP Applications Processors	www.ti.com/omap
Wireless Connectivity	www.ti.com/wirelessconnectivity

Applications

Automotive and Transportation	www.ti.com/automotive
Communications and Telecom	www.ti.com/communications
Computers and Peripherals	www.ti.com/computers
Consumer Electronics	www.ti.com/consumer-apps
Energy and Lighting	www.ti.com/energy
Industrial	www.ti.com/industrial
Medical	www.ti.com/medical
Security	www.ti.com/security
Space, Avionics and Defense	www.ti.com/space-avionics-defense
Video and Imaging	www.ti.com/video

TI E2E Community

e2e.ti.com