

DRV8801 Evaluation Module

User's Guide



Literature Number: SLVU335
February 2010

1	Block Diagram	5
1.1	Power Connectors	5
1.2	LEDs	5
1.3	Jumpers	5
1.4	Motor Outputs	5
2	Installing Drivers and Software	6
2.1	Installing the FTDI USB Driver	6
2.2	Installing the DRV8801EVM-001 Evaluation Board Windows Application Software	6
2.3	Running the Windows Application Software	6
3	The Windows Application	6
3.1	The Menu	7
3.2	DRV8801 GPIO Control Signals	7

List of Figures

1	CPG002 Customer EVM	5
2	DRV8801EVM-001_R1p0.exe Main Screen	6
3	Menu	7
4	Signals Frame	7

List of Tables

This document is provided as a supplement to the DRV8800/01 datasheet, and DRV8800/01 Design In Guide. It details the hardware implementation of the CPG002 (DRV8801EVM-001) Customer Evaluation Module (EVM).

1 Block Diagram

The CPG002 Customer EVM is a board containing all of the necessary components to evaluate the many features found on the DRV8801 device. The EVM makes the evaluation process easier by housing a microcontroller and an USB to Serial interface chip that allows for the user to control the different DRV8801 signals by means of a graphical user interface (GUI).

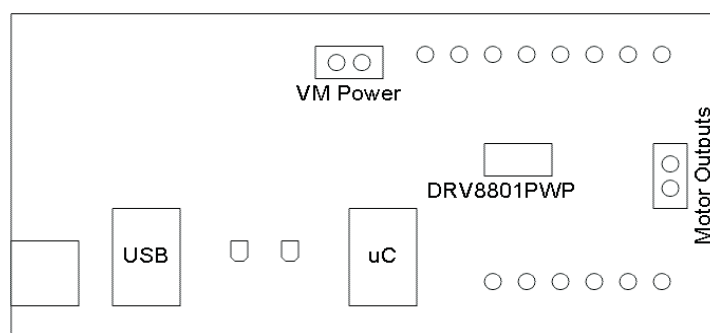


Figure 1. CPG002 Customer EVM

1.1 Power Connectors

The CPG002 Customer EVM offers terminal blocks for the application of VM power and for motor power outputs.

VM power rail must be externally supplied. VDD for logic is internally supplied as it is derived from the USB connection.

User must apply VM according to datasheet recommended parameters. An USB Connection to a PC computer is needed for proper control of the device.

1.2 LEDs

Three LEDs offer status information about power rails and microcontroller operating status.

1.3 Jumpers

This EVM has no jumpers that need to be configured by the user.

1.4 Motor Outputs

There are two ways for connecting the motor load into the CPG002 Evaluation Module: A terminal block and a two pin header. Each connection style offers identical connectivity to the H Bridge output terminals.

2 Installing Drivers and Software

2.1 Installing the FTDI USB Driver

Instructions on how to install the FTDI USB driver on a Windows based computer are detailed in the "USB_Drivers_Install_Readme.pdf" file supplied with the CD inside the USB_Driver folder.

2.2 Installing the DRV8801EVM-001 Evaluation Board Windows Application Software

Copy the contents of the Windows Application folder into any desired folder in the user's computer.

2.3 Running the Windows Application Software

To run the application, double click the "DRV8801EVM-001_R1p0.exe" application icon found on the same folder the application was copied into.

3 The Windows Application

The DRV8801EVM-001 Windows application is the software counterpart for the CPG002 EVM. It is in charge of connecting to the EVM via an USB connection which in turn selects the proper logic state for the DRV8801 control signals.

The Graphical User Interface (GUI) has been designed to allow for all of the DRV8801 device's functionality to be tested without having to intervene with the hardware.

Figure 2 shows the DRV8801EVM-001_R1p0.exe main screen. It contains menu items to configure and enable/disable the serial port and frames with GPIO control for the DRV8801 Control Signals as well as the ability to PWM the ENABLE and the PHASE inputs.

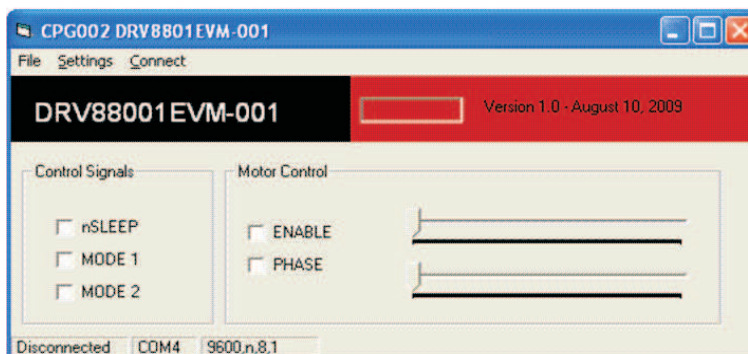


Figure 2. DRV8801EVM-001_R1p0.exe Main Screen

3.1 The Menu

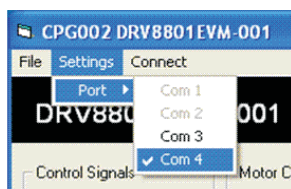


Figure 3. Menu

The menu at the top of the application offers a series of quick options for how the COM port is to behave.

File:

Exit - Terminates the application.

Settings:

Port - Selects from COM1 to COM4. Default is COM4.

The Serial Port actual port number defaults to what we have specified on the "USB_Drivers_Install_Readme.pdf". However, any port between COM 1 and COM 4 are equally usable.

Connect: Opens the Serial Port. When this menu item is pressed, its caption changes to "Disconnect".

Disconnect: Closes the Serial Port. When this menu item is pressed, its caption changes to "Connect".

After opening the application, the order of events should be:

Go to Settings → Port and choose the COM Port where the FTDI device has been configured to work. If the COM port is 4, then this step can be skipped, as application defaults to COM4.

Press Connect. If the port is available, the menu changes the "Connect" caption to "Disconnect". Press Disconnect if wanting to disable the serial communications.

The application is ready for use.

3.2 DRV8801 GPIO Control Signals

Once the application is communicating with the interface board, the control signals can be actuated by checking or un-checking check boxes on the Signals frame.

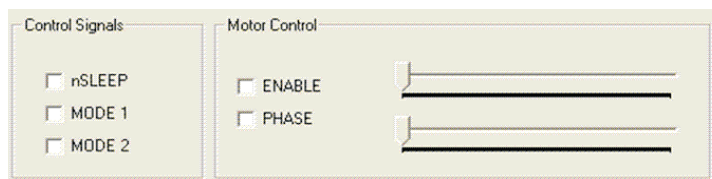


Figure 4. Signals Frame

A checked checkbox translates to a HI level on the respective control signal. A un-checked checkbox translates to a LO level on the respective control signal.

On the right side of the application, clicking on the ENABLE and PHASE checkboxes set the PWM duty cycle to 0x00 (when unchecked) or 0xFF (when checked). Moving the slider bar, configures the PWM duty cycle to a value in between.

IMPORTANT NOTICE

Texas Instruments Incorporated and its subsidiaries (TI) reserve the right to make corrections, modifications, enhancements, improvements, and other changes to its products and services at any time and to discontinue any product or service without notice. Customers should obtain the latest relevant information before placing orders and should verify that such information is current and complete. All products are sold subject to TI's terms and conditions of sale supplied at the time of order acknowledgment.

TI warrants performance of its hardware products to the specifications applicable at the time of sale in accordance with TI's standard warranty. Testing and other quality control techniques are used to the extent TI deems necessary to support this warranty. Except where mandated by government requirements, testing of all parameters of each product is not necessarily performed.

TI assumes no liability for applications assistance or customer product design. Customers are responsible for their products and applications using TI components. To minimize the risks associated with customer products and applications, customers should provide adequate design and operating safeguards.

TI does not warrant or represent that any license, either express or implied, is granted under any TI patent right, copyright, mask work right, or other TI intellectual property right relating to any combination, machine, or process in which TI products or services are used. Information published by TI regarding third-party products or services does not constitute a license from TI to use such products or services or a warranty or endorsement thereof. Use of such information may require a license from a third party under the patents or other intellectual property of the third party, or a license from TI under the patents or other intellectual property of TI.

Reproduction of TI information in TI data books or data sheets is permissible only if reproduction is without alteration and is accompanied by all associated warranties, conditions, limitations, and notices. Reproduction of this information with alteration is an unfair and deceptive business practice. TI is not responsible or liable for such altered documentation. Information of third parties may be subject to additional restrictions.

Resale of TI products or services with statements different from or beyond the parameters stated by TI for that product or service voids all express and any implied warranties for the associated TI product or service and is an unfair and deceptive business practice. TI is not responsible or liable for any such statements.

TI products are not authorized for use in safety-critical applications (such as life support) where a failure of the TI product would reasonably be expected to cause severe personal injury or death, unless officers of the parties have executed an agreement specifically governing such use. Buyers represent that they have all necessary expertise in the safety and regulatory ramifications of their applications, and acknowledge and agree that they are solely responsible for all legal, regulatory and safety-related requirements concerning their products and any use of TI products in such safety-critical applications, notwithstanding any applications-related information or support that may be provided by TI. Further, Buyers must fully indemnify TI and its representatives against any damages arising out of the use of TI products in such safety-critical applications.

TI products are neither designed nor intended for use in military/aerospace applications or environments unless the TI products are specifically designated by TI as military-grade or "enhanced plastic." Only products designated by TI as military-grade meet military specifications. Buyers acknowledge and agree that any such use of TI products which TI has not designated as military-grade is solely at the Buyer's risk, and that they are solely responsible for compliance with all legal and regulatory requirements in connection with such use.

TI products are neither designed nor intended for use in automotive applications or environments unless the specific TI products are designated by TI as compliant with ISO/TS 16949 requirements. Buyers acknowledge and agree that, if they use any non-designated products in automotive applications, TI will not be responsible for any failure to meet such requirements.

Following are URLs where you can obtain information on other Texas Instruments products and application solutions:

Products		Applications	
Amplifiers	amplifier.ti.com	Audio	www.ti.com/audio
Data Converters	dataconverter.ti.com	Automotive	www.ti.com/automotive
DLP® Products	www.dlp.com	Communications and Telecom	www.ti.com/communications
DSP	dsp.ti.com	Computers and Peripherals	www.ti.com/computers
Clocks and Timers	www.ti.com/clocks	Consumer Electronics	www.ti.com/consumer-apps
Interface	interface.ti.com	Energy	www.ti.com/energy
Logic	logic.ti.com	Industrial	www.ti.com/industrial
Power Mgmt	power.ti.com	Medical	www.ti.com/medical
Microcontrollers	microcontroller.ti.com	Security	www.ti.com/security
RFID	www.ti-rfid.com	Space, Avionics & Defense	www.ti.com/space-avionics-defense
RF/IF and ZigBee® Solutions	www.ti.com/lprf	Video and Imaging	www.ti.com/video
		Wireless	www.ti.com/wireless-apps