

## Isolated, 40-Mbps, 3.3-V to 5-V Profibus Interface

### 1 Circuit Function and Benefits

This circuit provides an isolated, 40-Mbps, 3.3-V to 5-V Profibus interface using the ISO1176T, isolated Profibus transceiver and the TPS76350 high-accuracy linear regulator. This circuit achieves signal and power isolation and at the same time decreases board space and power consumption.

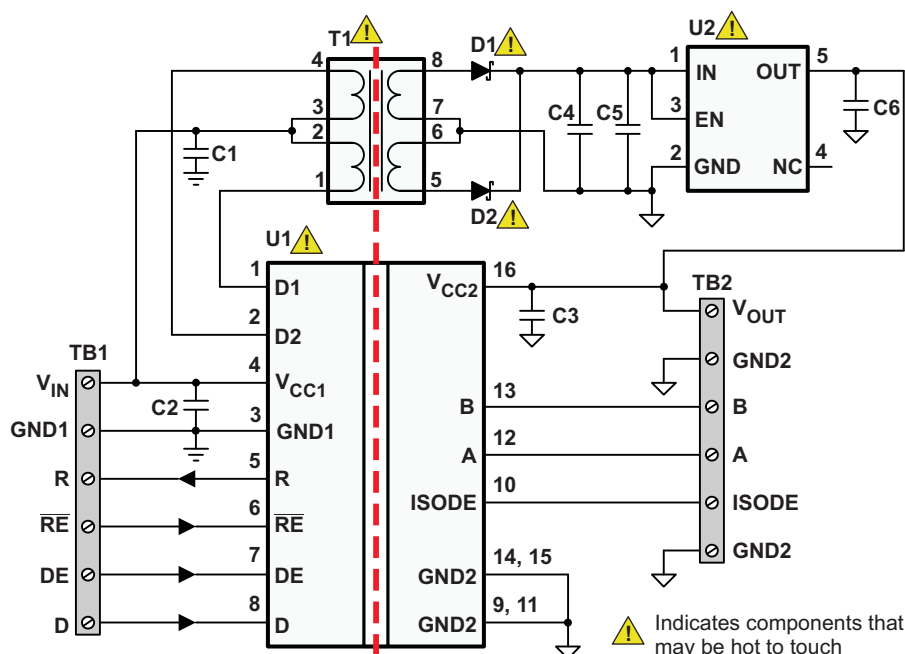


Figure 1. Isolated, 40-Mbps, 3.3-V to 5-V Profibus Interface

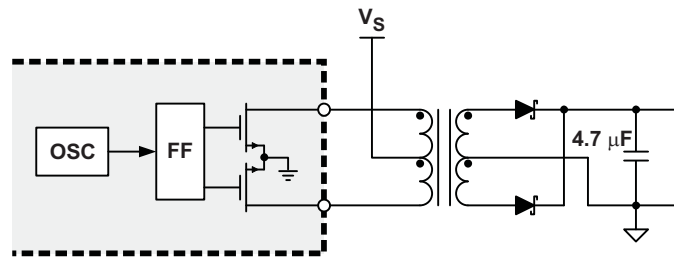
### 2 Circuit Description

The ISO1176T is an isolated differential line transceiver with integrated transformer driver that provides the primary voltage for an isolation transformer. The device is ideal for long transmission lines because the ground loop is broken to allow the device to operate with a much larger common-mode voltage range. The symmetrical isolation barrier of each device is tested to provide 2500 V<sub>rms</sub> of isolation between the line transceiver and the logic-level interface.

The galvanically isolated differential bus transceiver is designed for half-duplex data communication on multipoint bus-transmission lines. The transceiver combines a galvanically isolated differential line driver and differential-input line receiver. The driver has an active-high enable with isolated enable-state output on the ISODE pin (pin 10) to facilitate direction control. The driver differential outputs and the receiver differential inputs connect internally to form a differential input/output (I/O) bus port that is designed to offer minimum loading to the bus whenever the driver is disabled or  $V_{CC2} = 0$ .

Any cabled I/O can be subjected to electrical noise transients from various sources. These noise transients can cause damage to the transceiver and/or nearby sensitive circuitry if they are of sufficient magnitude and duration. The ISO1176T can significantly reduce the risk of data corruption and damage to expensive control circuits.

The integrated transformer driver consists of an oscillator followed by a flip-flop stage generating two complementary 50% duty-cycle square waves. These two signals drive the ground-referenced N-channel power switches. Internal circuitry ensures break-before-make action between the two switches.



**Figure 2. Simplified Transformer Driver**

A pair of Schottky diodes and a bulk capacitor build a full-wave rectifier providing the input voltage for the TPS76350 linear voltage regulator.

This low-dropout (LDO) voltage regulator offers the benefits of low dropout voltage, low-power operation, and miniaturized packaging. The regulator features low dropout voltages and quiescent currents compared to conventional LDO regulators. Offered in a five-terminal, small-outline, integrated-circuit SOT-23 package, the TPS76350 is ideal for cost-sensitive designs and for applications where board space is at a premium.

A combination of new circuit design and process innovation has enabled the usual PNP pass transistor to be replaced by a PMOS pass element. Because the PMOS pass element behaves as a low-value resistor, the dropout voltage is very low (typically 300 mV at 150 mA of load current) and is directly proportional to the load current. Because the PMOS pass element is a voltage-driven device, the quiescent current is very low (140 µA maximum) and is stable over the entire range of output load current (0 mA to 150 mA).

The TPS76350 also features a logic-enabled sleep mode to shut down the regulator, reducing quiescent current to 1 µA maximum at  $T_J = 25^\circ\text{C}$ . The TPS76350 output provides a regulated 5-V power supply to the ISO1176T bus-side circuitry ( $V_{CC2}$ ) as shown in [Figure 1](#).

Although not required, a 0.047 µF or larger ceramic bypass input capacitor, connected between IN and GND and located close to the TPS763xx, is recommended to improve transient response and noise rejection. A higher-value electrolytic input capacitor may be necessary if large, fast-rise-time load transients are anticipated and the device is located several inches from the power source.

Like all low-dropout regulators, the TPS76350 requires an output capacitor connected between OUT and GND to stabilize the internal loop control. The minimum recommended capacitance value is 4.7 µF and the equivalent series resistance (ESR) must be between 0.3 Ω and 10 Ω. Capacitor values of 4.7 µF or larger are acceptable, provided the ESR is less than 10 Ω. Solid tantalum electrolytic, aluminum electrolytic, and multilayer ceramic capacitors are all suitable, provided they meet the requirements described previously. Most of the commercially available 4.7-µF surface-mount solid tantalum capacitors, including devices from Sprague, Kemet, and Nichico, meet the ESR requirements stated previously.

### 3 Common Variations

When the ISO1176T is powered by 3.3 V on the logic side, a 1CT : 2.2CT transformer (T1) is required to step up the 3.3 V input supply ( $V_S$ ) to 6 V at the transformer secondary, thereby ensuring enough headroom for the TPS76350 LDO to provide a regulated 5-V output. If the ISO1176T is powered by 5 V on the logic side, a 1CT : 1.5CT transformer is needed.

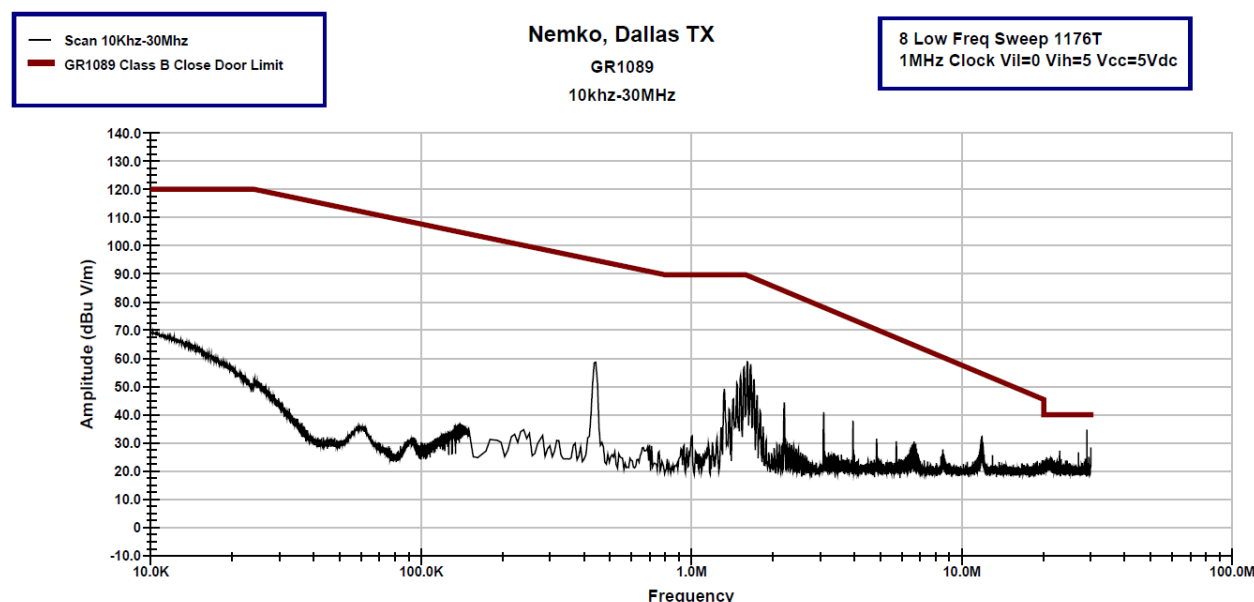
The external transformer used with the ISO1176T must have a center-tapped primary winding. The turns ratio of the transformer must provide the minimum required output voltage at the maximum anticipated load current with the minimum input voltage. [Table 1](#) lists suitable transformers for the circuit in [Figure 1](#).

**Table 1. Recommended Isolation Transformers**

Manufacturer	Primary Voltage (3.3 V)	Primary Voltage (5 V)
Coilcraft	DA2304-AL	DA2303-AL
Murata	782482/35C	782485/55C

## 4 Circuit Performance

Figure 3 shows a low-frequency sweep for measuring the radiated emissions to demonstrate compliance with the EN55022 standard, which specifies the limits and methods of measurement of radio disturbance characteristics of information technology equipment.



**Figure 3. Radiated Emissions (dBuV/m) from 10 kHz to 30 MHz**

Figure 4 shows the circuit efficiency over the load current. While load currents in the lower 20 mA can be expected for low data rates and no common-mode voltage, higher load currents around 100 mA are required for high data rates and high common-mode voltages.

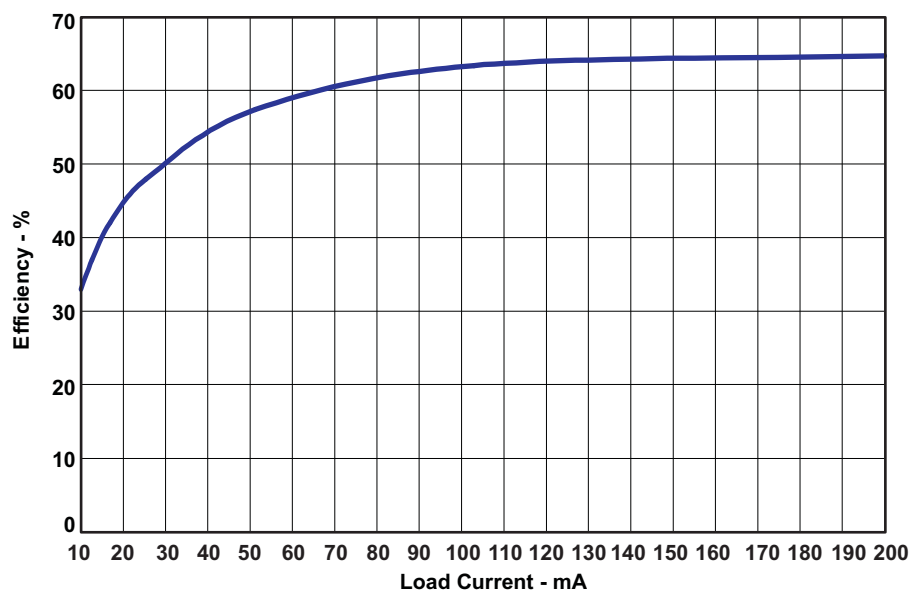


Figure 4. Efficiency Over Load Current

## 5 Circuit Layout and BOM

Figure 5 shows the silk screen as well as the top and bottom layers of the two-layer board, with the actual dc-dc converter capturing an area of 20 mm × 14 mm only.

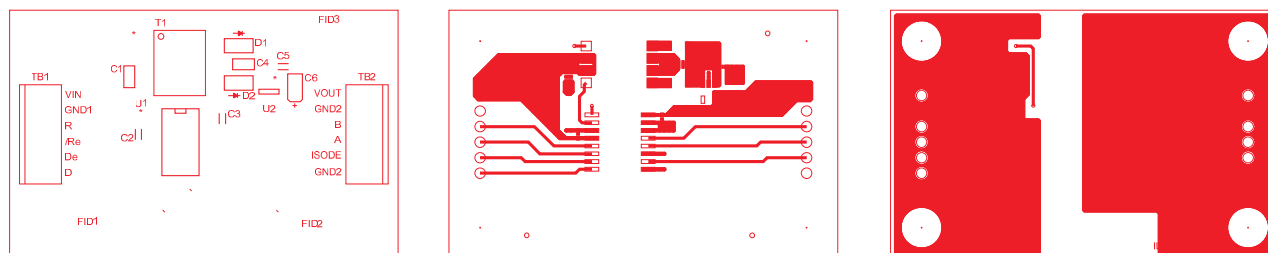


Figure 5. Board Layout: Silk Screen (Left), Top Layer (Middle), Bottom Layer (Right)

Figure 6 shows a picture of the actual board.

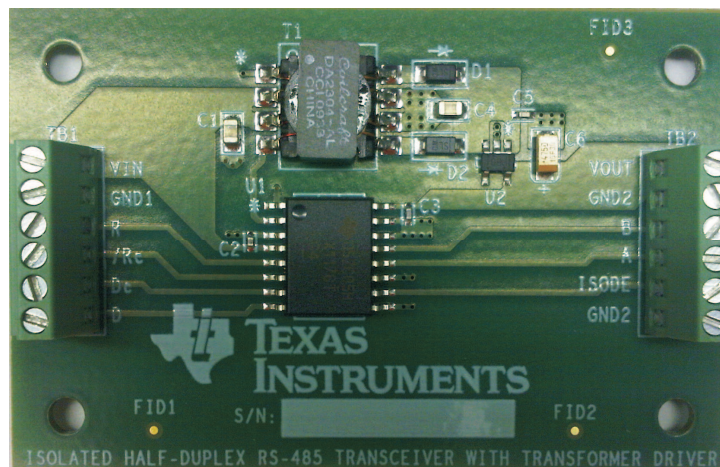


Figure 6. Reference Design Board: Top View

Table 2 shows the final bill of materials.

**Table 2. Bill of Materials**

Designator	Part No.	MFR	Value	Package/Size
U1	ISO1176T	TI	Half-duplex XCVR	DW-16
U2	TPS76350	TI	5-V LDO	DBV-5
D1, D2	MBR0520L	Fairchild	0.4-W Schottky diode	SOD123
C2, C3, C5	C0402C104K4RACTU	KEMET	0.1- $\mu$ F/16-V/X7R (ceramic)	0402 (1 $\times$ 0,5 mm <sup>2</sup> )
C1, C4	GRM21BR61C106KE15L	Murata	10- $\mu$ F/16-V/X5R (ceramic)	0805 (2 $\times$ 1,25 mm <sup>2</sup> )
C6	T491A475K016AT	KEMET	4.7- $\mu$ F/16-V (tantalum)	3,2 $\times$ 1,6 mm <sup>2</sup>
T1	DA2304-AL	Coilcraft	1:2.2	10 $\times$ 12 mm <sup>2</sup>
J1, J2	MPT 0,5 / 6-2,54	Phoenix-Contact	6-position terminal block	6,2 $\times$ 15,7 mm <sup>2</sup>

## Evaluation Board/Kit Important Notice

Texas Instruments (TI) provides the enclosed product(s) under the following conditions:

This evaluation board/kit is intended for use for **ENGINEERING DEVELOPMENT, DEMONSTRATION, OR EVALUATION PURPOSES ONLY** and is not considered by TI to be a finished end-product fit for general consumer use. Persons handling the product(s) must have electronics training and observe good engineering practice standards. As such, the goods being provided are not intended to be complete in terms of required design-, marketing-, and/or manufacturing-related protective considerations, including product safety and environmental measures typically found in end products that incorporate such semiconductor components or circuit boards. This evaluation board/kit does not fall within the scope of the European Union directives regarding electromagnetic compatibility, restricted substances (RoHS), recycling (WEEE), FCC, CE or UL, and therefore may not meet the technical requirements of these directives or other related directives.

Should this evaluation board/kit not meet the specifications indicated in the User's Guide, the board/kit may be returned within 30 days from the date of delivery for a full refund. **THE FOREGOING WARRANTY IS THE EXCLUSIVE WARRANTY MADE BY SELLER TO BUYER AND IS IN LIEU OF ALL OTHER WARRANTIES, EXPRESSED, IMPLIED, OR STATUTORY, INCLUDING ANY WARRANTY OF MERCHANTABILITY OR FITNESS FOR ANY PARTICULAR PURPOSE.**

The user assumes all responsibility and liability for proper and safe handling of the goods. Further, the user indemnifies TI from all claims arising from the handling or use of the goods. Due to the open construction of the product, it is the user's responsibility to take any and all appropriate precautions with regard to electrostatic discharge.

**EXCEPT TO THE EXTENT OF THE INDEMNITY SET FORTH ABOVE, NEITHER PARTY SHALL BE LIABLE TO THE OTHER FOR ANY INDIRECT, SPECIAL, INCIDENTAL, OR CONSEQUENTIAL DAMAGES.**

TI currently deals with a variety of customers for products, and therefore our arrangement with the user **is not exclusive**.

TI assumes **no liability for applications assistance, customer product design, software performance, or infringement of patents or services described herein.**

Please read the User's Guide and, specifically, the Warnings and Restrictions notice in the User's Guide prior to handling the product. This notice contains important safety information about temperatures and voltages. For additional information on TI's environmental and/or safety programs, please contact the TI application engineer or visit [www.ti.com/esh](http://www.ti.com/esh).

No license is granted under any patent right or other intellectual property right of TI covering or relating to any machine, process, or combination in which such TI products or services might be or are used.

## FCC Warning

This evaluation board/kit is intended for use for **ENGINEERING DEVELOPMENT, DEMONSTRATION, OR EVALUATION PURPOSES ONLY** and is not considered by TI to be a finished end-product fit for general consumer use. It generates, uses, and can radiate radio frequency energy and has not been tested for compliance with the limits of computing devices pursuant to part 15 of FCC rules, which are designed to provide reasonable protection against radio frequency interference. Operation of this equipment in other environments may cause interference with radio communications, in which case the user at his own expense will be required to take whatever measures may be required to correct this interference.

## EVM Warnings and Restrictions

It is important to operate this EVM within the input voltage range of 0 V to 5.5 V and the output voltage range of 0 V to 6 V.

Exceeding the specified input range may cause unexpected operation and/or irreversible damage to the EVM. If there are questions concerning the input range, please contact a TI field representative prior to connecting the input power.

Applying loads outside of the specified output range may result in unintended operation and/or possible permanent damage to the EVM. Please consult the EVM User's Guide prior to connecting any load to the EVM output. If there is uncertainty as to the load specification, please contact a TI field representative.

During normal operation, some circuit components may have case temperatures greater than 85°C. The EVM is designed to operate properly with certain components above 85°C as long as the input and output ranges are maintained. These components include but are not limited to linear regulators, switching transistors, pass transistors, and current sense resistors. These types of devices can be identified using the EVM schematic located in the EVM User's Guide. When placing measurement probes near these devices during operation, please be aware that these devices may be very warm to the touch.

Mailing Address: Texas Instruments, Post Office Box 655303, Dallas, Texas 75265  
Copyright © 2011, Texas Instruments Incorporated

## IMPORTANT NOTICE

Texas Instruments Incorporated and its subsidiaries (TI) reserve the right to make corrections, modifications, enhancements, improvements, and other changes to its products and services at any time and to discontinue any product or service without notice. Customers should obtain the latest relevant information before placing orders and should verify that such information is current and complete. All products are sold subject to TI's terms and conditions of sale supplied at the time of order acknowledgment.

TI warrants performance of its hardware products to the specifications applicable at the time of sale in accordance with TI's standard warranty. Testing and other quality control techniques are used to the extent TI deems necessary to support this warranty. Except where mandated by government requirements, testing of all parameters of each product is not necessarily performed.

TI assumes no liability for applications assistance or customer product design. Customers are responsible for their products and applications using TI components. To minimize the risks associated with customer products and applications, customers should provide adequate design and operating safeguards.

TI does not warrant or represent that any license, either express or implied, is granted under any TI patent right, copyright, mask work right, or other TI intellectual property right relating to any combination, machine, or process in which TI products or services are used. Information published by TI regarding third-party products or services does not constitute a license from TI to use such products or services or a warranty or endorsement thereof. Use of such information may require a license from a third party under the patents or other intellectual property of the third party, or a license from TI under the patents or other intellectual property of TI.

Reproduction of TI information in TI data books or data sheets is permissible only if reproduction is without alteration and is accompanied by all associated warranties, conditions, limitations, and notices. Reproduction of this information with alteration is an unfair and deceptive business practice. TI is not responsible or liable for such altered documentation. Information of third parties may be subject to additional restrictions.

Resale of TI products or services with statements different from or beyond the parameters stated by TI for that product or service voids all express and any implied warranties for the associated TI product or service and is an unfair and deceptive business practice. TI is not responsible or liable for any such statements.

TI products are not authorized for use in safety-critical applications (such as life support) where a failure of the TI product would reasonably be expected to cause severe personal injury or death, unless officers of the parties have executed an agreement specifically governing such use. Buyers represent that they have all necessary expertise in the safety and regulatory ramifications of their applications, and acknowledge and agree that they are solely responsible for all legal, regulatory and safety-related requirements concerning their products and any use of TI products in such safety-critical applications, notwithstanding any applications-related information or support that may be provided by TI. Further, Buyers must fully indemnify TI and its representatives against any damages arising out of the use of TI products in such safety-critical applications.

TI products are neither designed nor intended for use in military/aerospace applications or environments unless the TI products are specifically designated by TI as military-grade or "enhanced plastic." Only products designated by TI as military-grade meet military specifications. Buyers acknowledge and agree that any such use of TI products which TI has not designated as military-grade is solely at the Buyer's risk, and that they are solely responsible for compliance with all legal and regulatory requirements in connection with such use.

TI products are neither designed nor intended for use in automotive applications or environments unless the specific TI products are designated by TI as compliant with ISO/TS 16949 requirements. Buyers acknowledge and agree that, if they use any non-designated products in automotive applications, TI will not be responsible for any failure to meet such requirements.

Following are URLs where you can obtain information on other Texas Instruments products and application solutions:

### Products

Audio	<a href="http://www.ti.com/audio">www.ti.com/audio</a>
Amplifiers	<a href="http://amplifier.ti.com">amplifier.ti.com</a>
Data Converters	<a href="http://dataconverter.ti.com">dataconverter.ti.com</a>
DLP® Products	<a href="http://www.dlp.com">www.dlp.com</a>
DSP	<a href="http://dsp.ti.com">dsp.ti.com</a>
Clocks and Timers	<a href="http://www.ti.com/clocks">www.ti.com/clocks</a>
Interface	<a href="http://interface.ti.com">interface.ti.com</a>
Logic	<a href="http://logic.ti.com">logic.ti.com</a>
Power Mgmt	<a href="http://power.ti.com">power.ti.com</a>
Microcontrollers	<a href="http://microcontroller.ti.com">microcontroller.ti.com</a>
RFID	<a href="http://www.ti-rfid.com">www.ti-rfid.com</a>
RF/IF and ZigBee® Solutions	<a href="http://www.ti.com/lprf">www.ti.com/lprf</a>

### Applications

Communications and Telecom	<a href="http://www.ti.com/communications">www.ti.com/communications</a>
Computers and Peripherals	<a href="http://www.ti.com/computers">www.ti.com/computers</a>
Consumer Electronics	<a href="http://www.ti.com/consumer-apps">www.ti.com/consumer-apps</a>
Energy and Lighting	<a href="http://www.ti.com/energy">www.ti.com/energy</a>
Industrial	<a href="http://www.ti.com/industrial">www.ti.com/industrial</a>
Medical	<a href="http://www.ti.com/medical">www.ti.com/medical</a>
Security	<a href="http://www.ti.com/security">www.ti.com/security</a>
Space, Avionics and Defense	<a href="http://www.ti.com/space-avionics-defense">www.ti.com/space-avionics-defense</a>
Transportation and Automotive	<a href="http://www.ti.com/automotive">www.ti.com/automotive</a>
Video and Imaging	<a href="http://www.ti.com/video">www.ti.com/video</a>
Wireless	<a href="http://www.ti.com/wireless-apps">www.ti.com/wireless-apps</a>

TI E2E Community Home Page

[e2e.ti.com](http://e2e.ti.com)

Mailing Address: Texas Instruments, Post Office Box 655303, Dallas, Texas 75265  
Copyright © 2011, Texas Instruments Incorporated