

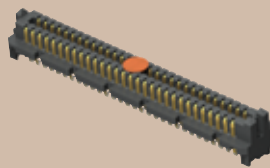


SEARAY™
OPEN PIN FIELD
INTERCONNECTS

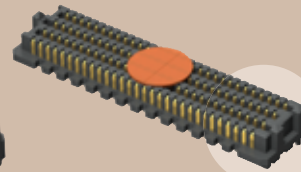
(1,27 mm) .050"

SEAM SERIES

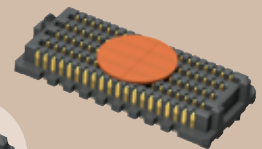
SEAM-20-02.0-S-10-2-A-K-TR



SEAM-30-03.5-S-04-2-A-K-TR



SEAM-30-02.0-S-08-2-A-K-TR



HIGH SPEED/HIGH DENSITY OPEN PIN FIELD

SPECIFICATIONS

For complete specifications and recommended PCB layouts see www.samtec.com?SEAM

Insulator Material:
Black LCP

Contact Material:
Copper Alloy

Operating Temp Range:
-55°C to +125°C

Plating:
Au or Sn over
50µ" (1,27 µm) Ni

Contact Resistance:
5.5 mΩ

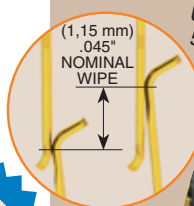
Working Voltage:
240 VAC

RoHS Compliant:
Yes

Lead-Free Solderable:
Yes



Mates with:
SEAF, SEAFP



Low
Insertion/
Extraction
Forces

Up to
500 Pins

5, 8 and 10 row footprint compatible
with SamArray®. Samples recommended.

Solder
charges

SEAM/SEAF 7 mm Stack Height	Rated @ 3dB Insertion Loss	
	with PCB effects*	w/o PCB effects**
Single-Ended Signaling	9.5 GHz / 19 Gbps	12.5 GHz / 25 Gbps
Differential Pair Signaling	10.5 GHz / 21 Gbps	13 GHz / 26 Gbps

*Performance data includes effects of a non-optimized PCB.
**Test board losses de-embedded from performance data.
Performance data for other stack heights and complete test data available at www.samtec.com?SEAM or contact sig@samtec.com

25+
Gbps

CURRENT RATING (PER CONTACT)	
AMBIENT TEMP	SEAM/SEAF
20°C	2.3A
40°C	2A
60°C	1.75A
95°C	1.14A
30 ADJACENT POSITIONS POWERED	

**Industry
Standards**

PISMO 2
VITA 47
VITA 57

**Protocols
Supported**

100 GbE
Fibre Channel
Rapid I/O
PCI Express®
SATA
InfiniBand™

Download app notes at:
www.samtec.com/appnote
Contact SIG @ samtec.com
for questions on protocols

SEAM - NO. PINS PER ROW - LEAD STYLE - PLATING OPTION - NO. OF ROWS - SOLDER TYPE - A - K - TR

-10, -15, -20,
-30, -40, -50
(-10 only available in 04 row)
(-15 only available in 10 row)

Specify
LEAD
STYLE
from
chart

-L
= 10µ"
(0,25 µm)
Gold on
contact area,
Matte Tin on
solder tail

-S
= 30µ"
(0,76 µm)
Gold on
contact area,
Matte Tin on
solder tail

-04
= Four Rows
(-06.5 not
available)

-05
= Five Rows
(-06.5 not
available)

-06
= Six Rows
(-06.5 not
available)

-08
= Eight Rows

-10
= Ten Rows

-1
= Tin/Lead Alloy
Solder Charge

-2
= Lead-Free
Solder Charge

-A
= Alignment Pins
(Required. Arrays
will not self-center
on solder pads)

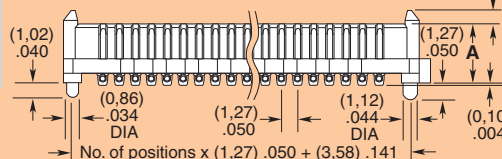
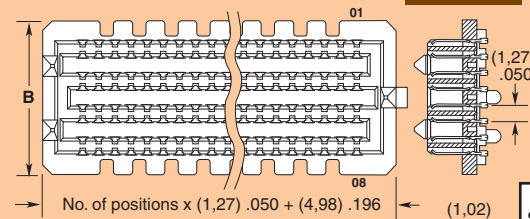
-K
= Polyimide film
Pick & Place Pad

-TR
= Tape & Reel

NO. OF ROWS	B
-04	(7,06) .278
-05, -06	(9,60) .378
-08	(12,14) .478
-10	(14,68) .578

DIFFERENTIAL

ARRAY	PAIR COUNT
40x8	80
40x6	60
30x10	75
30x8	60
30x6	45
20x10	50
20x8	40
20x5	25



LEAD STYLE	A
-02.0	(4,60) .181
-03.0	(5,59) .220
-03.5	(6,10) .240
-06.5	(6,40) .252
-07.0	(9,60) .378
-09.0	(11,60) .457
-11.0	(13,60) .535



MATED HEIGHTS		
SEAM LEAD STYLE	SEAF LEAD STYLE	
	-05.0	-06.0
-02.0	7 mm	8 mm
-03.0	8 mm	9 mm
-03.5	8.5 mm	9.5 mm
-06.5	11.5 mm	12.5 mm
-07.0	12 mm	13 mm
-09.0	14 mm	15 mm
-11.0	16 mm	17 mm

Note: Some sizes, styles and options are non-standard, non-returnable.

Due to technical progress, all designs, specifications and components are subject to change without notice.

WWW.SAMTEC.COM

SAMTEC USA • Tel: 1-800-SAMTEC-9 or 812-944-6733 SAMTEC NORTHERN CALIFORNIA • Tel: 408-395-5900 SAMTEC SOUTHERN CALIFORNIA • Tel: 1-800-726-8329
SAMTEC AMERICA LATINA COMERCIO EXTERIOR LTDA • Tel: (+55 31) 3786 3227 SAMTEC UNITED KINGDOM • Tel: 44 01236 739292 SAMTEC GERMANY • Tel: +49 (0) 89 / 89460-0
SAMTEC FRANCE • Tel: 33 01 60 95 06 60 SAMTEC ITALY • Tel: 39 039 6890337 SAMTEC NORDIC/BALTIC • Tel: +46-84477280 SAMTEC BENELUX • Tel: 44 01236 739292
SAMTEC ISRAEL • Tel: 972-3-7526600 SAMTEC INDIA • Tel: +91-80-3272 1612 SAMTEC ASIA PACIFIC • Tel: 65 6745-5955 SAMTEC JAPAN • Tel: 045-475-1385 SAMTEC CHINA • Tel: 86-21-6083 3766
SAMTEC TAIWAN • Tel: 886-2-2735-6109 SAMTEC HONG KONG • Tel: 852-26904858 SAMTEC KOREA • Tel: 82-31-717-5685 SAMTEC ANZ • Tel: 613 9580 0683