

6A to 60A, 500VAC EMI Filters

Features

- ◆ High Voltage Pulse Attenuation
- ◆ DIN Rail Mount Option (Up 30A)
- ◆ Conforms to UL and EN Safety Agency Certifications



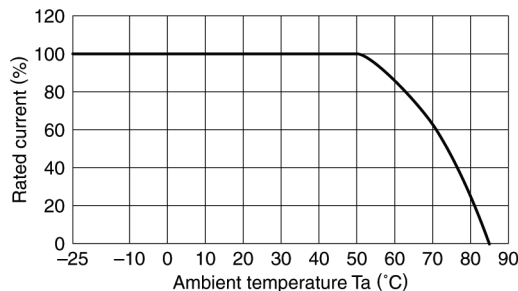
Key Market Segments & Applications



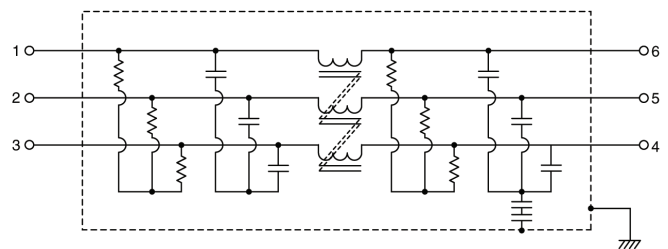
Specifications

| Model | | RTAN-5006 RTAN-5006D | RTAN-5010 RTAN-5010D | RTAN-5020 RTAN-5020D | RTAN-5030 RTAN-5030D | RTAN-5040 |
|------------------------------|----|--|-------------------------|-------------------------|-------------------------|-----------|
| Rated Voltage (AC, DC) | V | 500V Three phase | | | | |
| Rated Current | A | 6A | 10A | 20A | 30A | 40A |
| DC Resistance (total) | mΩ | 350 | 140 | 60 | 35 | 22 |
| Model | | RTAN-5050 | RTAN-5060 | | | |
| Rated Voltage (AC, DC) | V | 500V Three phase | | | | |
| Rated Current | A | 50A | 60A | | | |
| DC Resistance (total) | mΩ | 7 | 5 | | | |
| Withstand Voltage | V | Terminals to Case: 2500VAC (1 Minute) | | | | |
| Isolation Resistance | MΩ | 100MΩ minimum (500VDC, 1 Minute) | | | | |
| Leakage Current (max) | A | 2.5mA at 250VAC 60Hz, 5mA at 500VAC 60Hz | | | | |
| Operating Temperature | °C | -25 to +85°C (Derate above 50°C, see derating curve) | | | | |
| Storage Temperature | °C | -25 to +85°C | | | | |
| Safety Agency Certifications | - | UL1283 & EN60939 | | | | |
| Weight | g | 360g to 1120g model dependant (See weights chart on website) | | | | |
| Warranty | yr | 1 Year | | | | |

Derating



Circuit

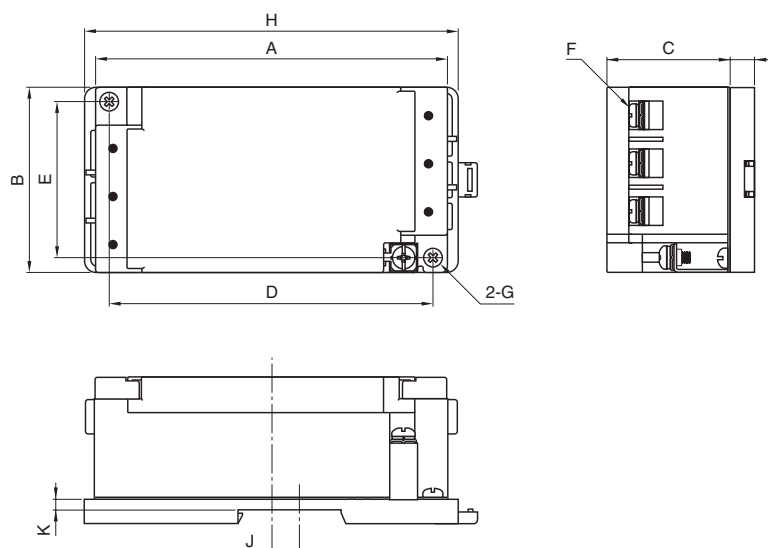


Options

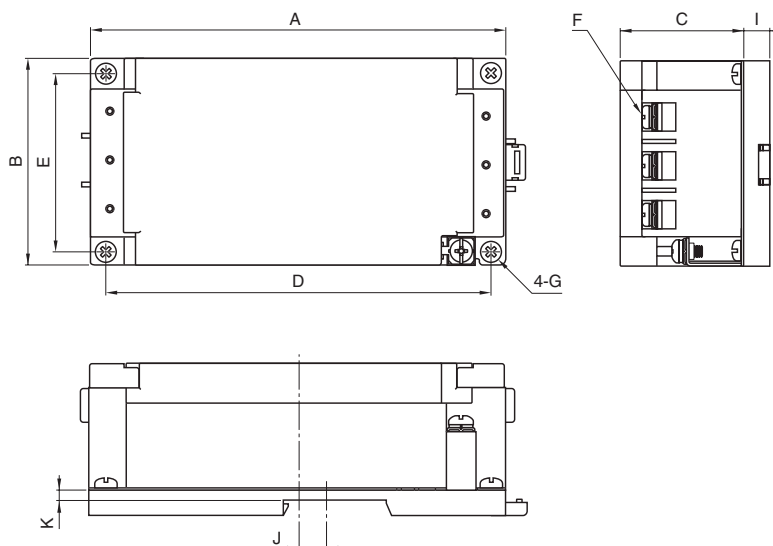
| | |
|-----------------------------------|------------|
| Chassis Mount | RTAN-50xx |
| DIN Rail Mount (Models up to 30A) | RTAN-50xxD |

Outline Drawing

RTAN-5006D/5010D



RTAN-5020D/5030D



For Additional Information, please visit
us.tdk-lambda.com/lp/products/r-series.htm

