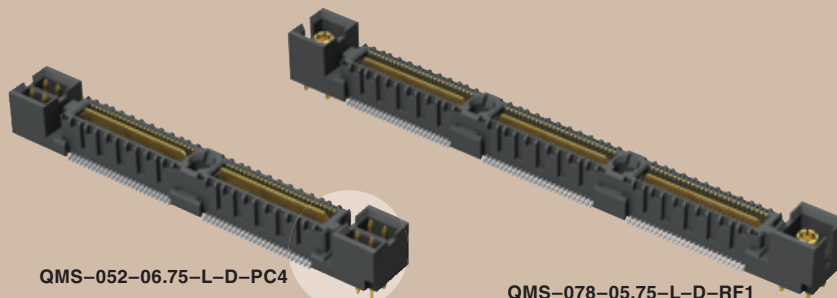




(0,635 mm) .025"

QMS-PC, QMS-RF SERIES



QMS-052-06.75-L-D-PC4

QMS-078-05.75-L-D-RF1

HIGH SPEED COMBO RF & POWER

SPECIFICATIONS

For complete specifications and recommended PCB layouts see www.samtec.com?QMS

Insulator Material:

Liquid Crystal

Polymer

Terminal & Ground Plane Material:

Phosphor Bronze

Plating:

Au over 50µ" (1,27 µm) Ni

(Tin on Ground Plane Tail)

Current Rating:

Signal Contact:

1.8A per signal contact @ 80°C

Power Contact:

4.1A per power contact @ 80°C

Ground Plane:

8.9A per ground contact @ 80°C

Voltage Rating:

300 VAC mated with QFS

Operating Temp:

-55°C to +125°C

RoHS Compliant:

Yes

Processing:

Lead-Free Solderable: Yes

SMT Lead Coplanarity:

(0,10 mm) .004" max (026-078)

Board Stacking:

For applications requiring more than two connectors per board, contact ipg@samtec.com

FILE NO. E111594

Board Mates:
QFS-PC, QFS-RA-PC,
QFS-RF



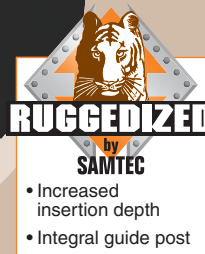
Integral metal plane for power or ground

Choice of Power and RF options

QMS-PC/QFS-PC 10 mm Stack Height	Type	Rated @ 3dB Insertion Loss	
		with PCB effects*	w/o PCB effects**
Single-Ended Signaling	-D	9 GHz / 18 Gbps	8.5 GHz / 17 Gbps
Differential Pair Signaling	-D	8 GHz / 16 Gbps	8.5 GHz / 17 Gbps

*Performance data includes effects of a non-optimized PCB.

**Test board losses de-embedded from performance data.

Performance data for other stack heights and complete test data available at www.samtec.com?QMS or contact sig@samtec.com

QMS

NO. OF PINS
PER ROWLEAD
STYLEPLATING
OPTION

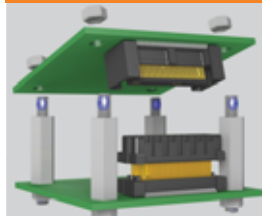
D

END
OPTION-026, -052, -078
(52 total pins per bank)Specify
LEAD
STYLE
from
chart-L
= 10µ" (0,25 µm) Gold on Signal Pins
and Ground Plane
(Tin on Signal Pin tails,
and Ground Plane tails)-PC4
= 4 Power
Pins per End for
(1,60 mm) .062"
thick Board
(N/A with
-RF1)-RF1
= One RF
Plug per End
(-05.75 only,
not available
with -PC4)

APPLICATION SPECIFIC OPTION

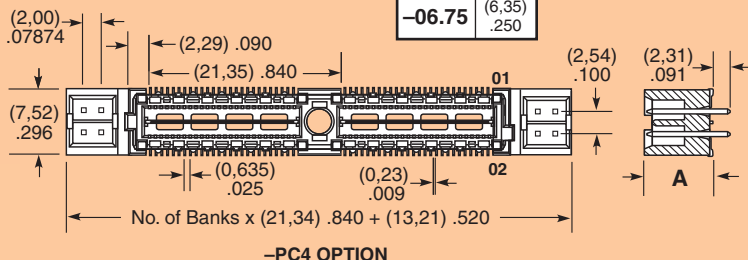
- Differential Pairs
 - Retention Pins
 - 8 Power Pins/End for (1,60 mm) .062" thick Board
 - 4 or 8 Power Pins/End for (2,36 mm) .093" thick Board
 - 2 RF Connectors/End
 - Hot Pluggable
- Call Samtec.

APPLICATIONS

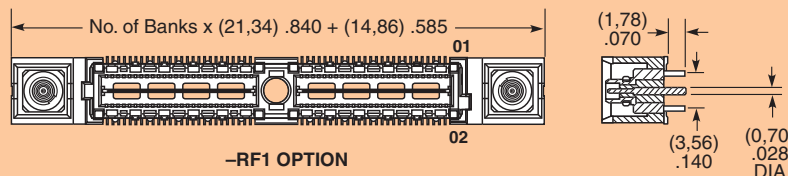


See SO Series for precision machined standoffs.

Note: Some lengths, styles and options are non-standard, non-returnable.

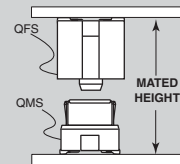


-PC4 OPTION



-RF1 OPTION

APPLICATION



QMS LEAD STYLE	MATED HEIGHT*
-05.75	10 mm
-06.75	11 mm

*Processing conditions will affect mated height.

Due to technical progress, all designs, specifications and components are subject to change without notice.

WWW.SAMTEC.COM

SAMTEC USA • Tel: 1-800-SAMTEC-9 or 812-944-6733 SAMTEC NORTHERN CALIFORNIA • Tel: 408-395-5900 SAMTEC SOUTHERN CALIFORNIA • Tel: 1-800-726-8329
 SAMTEC AMERICA LATINA COMERCIO EXTERIOR LTDA • Tel: (+55 31) 3786 3227 SAMTEC UNITED KINGDOM • Tel: 44 01236 739292 SAMTEC GERMANY • Tel: +49 (0) 89 / 89460-0
 SAMTEC FRANCE • Tel: 33 01 60 95 06 60 SAMTEC ITALY • Tel: 39 039 6890337 SAMTEC NORDIC/BALTIC • Tel: +46-84477280 SAMTEC BENELUX • Tel: 44 01236 739292
 SAMTEC ISRAEL • Tel: 972-3-7526600 SAMTEC INDIA • Tel: +91-80-3272 1612 SAMTEC ASIA PACIFIC • Tel: 65 6745-5955 SAMTEC JAPAN • Tel: 045-475-1385 SAMTEC CHINA • Tel: 86-21-6083 3766
 SAMTEC TAIWAN • Tel: 886-2-2735-6109 SAMTEC HONG KONG • Tel: 852-26904858 SAMTEC KOREA • Tel: 82-31-717-5685 SAMTEC ANZ • Tel: 613 9580 0683