

(0,635 mm) .025"

QFSS SERIES

QFSS-052-04.25-L-D-PC4

QFSS-078-04.25-L-D-A

QFSS-026-04.25-L-D-A

SHIELDED GROUND PLANE SOCKET

SPECIFICATIONS

For complete specifications and recommended PCB layouts see www.samtec.com/QFSS

Insulator Material:

Liquid Crystal
Polymer



Contact, Ground

Plane & Shield Material:
Phosphor Bronze

Plating:

Au over 50µ" (1,27 µm) Ni
(Tin on Ground Plane tails)

Current Rating:

Signal Contact:
1.8A per contact @ 80°C
Power Contact:
3.95A per power contact @ 80°C
Ground Plane:
8.9A per ground plane @ 80°C

Voltage Rating:

300 VAC mated with QMSS

Operating Temp:

-55°C to +125°C

RoHS Compliant:

Yes

Processing:

Lead-Free Solderable:

Yes

SMT Lead Coplanarity:

(0,10 mm) .004" max (026-078)

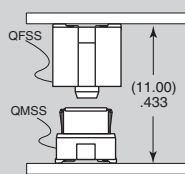
Board Stacking:

For applications requiring more than two connectors per board, contact ipg@samtec.com

APPLICATION SPECIFIC OPTION

- Headers without Alignment Pins
 - 8 Power Pins/End
 - 4 or 8 Power Pins/End for (2,36 mm) .093" thick board
 - Guide Holes
 - Hot Pluggable
 - 64 (-DP) and 104 pins per row
- Call Samtec.

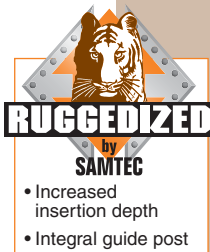
APPLICATION



Note: Some lengths, styles and options are non-standard, non-returnable.

Board Mates:
QMSS

Cable Mates:
6QDPS



QMSS/QFSS 11 mm Stack Height	Type	Rated @ 3dB Insertion Loss*
Single-Ended Signaling	-D	6 GHz / 12 Gbps
Differential Pair Signaling	-D	7 GHz / 14 Gbps
Differential Pair Signaling	-D-DP	7.5 GHz / 15 Gbps

*Performance data includes effects of a non-optimized PCB.

Performance data for other stack heights and complete test data available at www.samtec.com/QFSS or contact sig@samtec.com

Standard shield grounding is GSSSSG. Application Specific options available.

Increased insertion depth for rugged application

11 mm
Stack Height

Single-Ended
Signal routing.



QFSS

PINS PER ROW
NO. OF PAIRS

04.25

PLATING
OPTION

TYPE

A

OTHER
OPTION

-026, -052, -078

(52 total pins per bank
40 signals + 12 grounds to shield = -D)

-016, -032, -048

(16 pairs per bank = -D-DP)

-L

= 10µ" (0,25 µm)
Gold on Signal
Pins, Shield and
Ground Plane
(Tin on Signal Pin
tails, and Ground
Plane tails)

-D

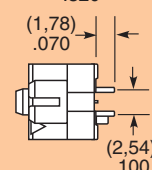
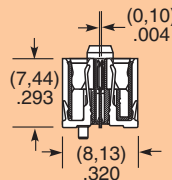
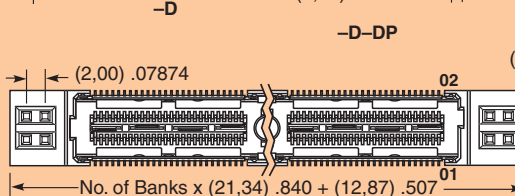
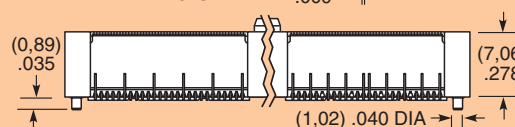
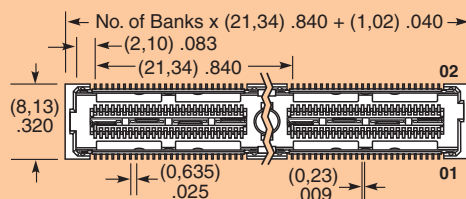
= Single-Ended

-D-DP

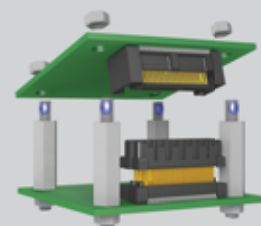
= Differential Pair

-PC4

= 4 Power
Pins/End
(N/A with -A)



APPLICATIONS



See SO Series for precision machined standoffs.

Due to technical progress, all designs, specifications and components are subject to change without notice.

WWW.SAMTEC.COM

SAMTEC USA • Tel: 1-800-SAMTEC-9 or 812-944-6733 SAMTEC NORTHERN CALIFORNIA • Tel: 408-395-5900 SAMTEC SOUTHERN CALIFORNIA • Tel: 1-800-726-8329
SAMTEC AMERICA LATINA COMERCIO EXTERIOR LTDA • Tel: (+55 31) 3786 3227 SAMTEC UNITED KINGDOM • Tel: 44 01236 739292 SAMTEC GERMANY • Tel: +49 (0) 89 / 89460-0
SAMTEC FRANCE • Tel: 33 01 60 95 06 60 SAMTEC ITALY • Tel: 39 039 6890337 SAMTEC NORDIC/BALTIC • Tel: +46-84477280 SAMTEC BENELUX • Tel: 44 01236 739292
SAMTEC ISRAEL • Tel: 972-3-7526600 SAMTEC INDIA • Tel: +91-80-3272 1612 SAMTEC ASIA PACIFIC • Tel: 65 6745-5955 SAMTEC JAPAN • Tel: 045-475-1385 SAMTEC CHINA • Tel: 86-21-6083 3766
SAMTEC TAIWAN • Tel: 886-2-2735-6109 SAMTEC HONG KONG • Tel: 852-26904858 SAMTEC KOREA • Tel: 82-31-717-5685 SAMTEC ANZ • Tel: 613 9580 0683