

Features

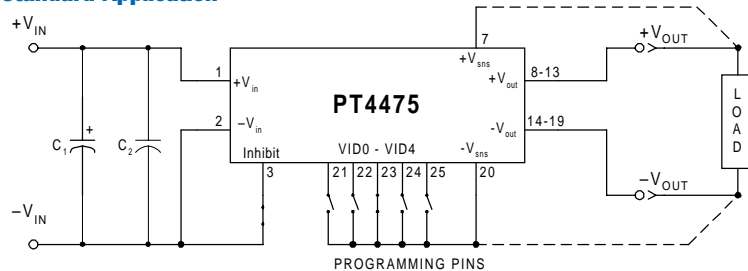
- 18V to 36V Input Range
- -40° to +100°C Operating Temp
- 1500 VDC Isolation
- 88.5% Efficiency
- Programmable Output Voltage 6.5V to 17.5V
- Remote On/Off
- Differential Remote Sense
- N+1 Current Sharing
- Over-Current Protection
- Over-Temperature Protection
- Over-Voltage Protection
- Solderable Copper Case

Description

The PT4475 Excalibur™ module combines state-of-the-art power conversion technology with unparalleled flexibility. Operating off a standard 24V telecom input, the PT4475 provides a full 100W output at load currents up to 8.5A, and over the programmable output voltage range of 6.5V to 17.5V.

The PT4475 features high efficiency, ultra-fast transient response, and the capability for true N+1 current sharing. This product also includes output short circuit and over-temperature protection.

Standard Application



- C₁ = Optional 33μF, 100V electrolytic capacitor
- C₂ = Optional 1μF, 100V ceramic capacitor
- Programming pins, VID0–VID4, are shown configured for V_o = 12.0V
- For normal operation, pin 3 (Inhibit) must be connected to -V_{in}.
- For operation in N+1 configuration, consult the related application note.
- Pins 6 & 26 are used for N+1 configurations only.

Specifications

Characteristics (T _a = 25°C unless noted)	Symbols	Conditions (V _{in} = 24V, V _o = 12.0V unless noted)	PT4475			
			Min	Typ	Max	Units
Output Current	I _o	Over V _{in} range (100W max)	0.1	—	8.5 (1)	A
Current Limit	I _{cl}	V _{in} = 18V	—	10	—	A
Current Sharing		Single line referenced to -V _{sense}	—	—	±10	%
Input Voltage Range	V _{in}	I _o = 0 to I _o max	18	24	36	V
Output Voltage Tolerance	ΔV _o	Over V _{in} range, I _o = I _o max T _a = -40 to +100°C case	—	±1.0	±2.0	%V _o
Line Regulation	Reg _{line}	Over V _{in} range @ max I _o	—	±0.1	±1.0	%V _o
Load Regulation	Reg _{load}	0 to 100% of I _o max	—	±0.5	±1.0	%V _o
V _o Ripple/Noise	V _n	I _o = I _o max	—	120	150	mV _{pp}
Transient Response	t _{tr}	50% to 75% I _o max @ 0.1A/μs V _o over/undershoot (no ext caps)	—	N/A	—	μSec
		50% to 100% I _o max @ 1.0A/μs V _o over/undershoot (no ext. caps)	—	200	—	μSec
			—	5	—	%V _o
V _o Rise Time	V _{otr}	At turn-on	—	—	10	mSec
Efficiency	η	I _o = 5A	—	89	—	%
Switching Frequency	f _o	—	—	300	—	kHz
Remote On/Off	Off On	referenced to -V _{in}	+2.5 -0.5	—	+75.0 +0.8	VDC
Over-Voltage Protection	OVP	Shutdown and latch off	—	125	—	%V _o
Isolation	—	—	1500	—	—	VDC
Operating Temperature Range	T _c	Measured at center of case	-40	—	+100	°C
Over-Temperature Shutdown	OTP	Case temperature - Auto reset	—	+110	—	°C
Storage Temperature	T _s	—	-40	—	+125	°C
Reliability	MTBF	Per Bellcore TR-332 50% stress, t = 40°C, ground benign	1.7	—	—	10 ⁶ Hrs
Mechanical Shock	—	Per Mil-STD-883D, Method 2002.3, 1mS, Half-sine, mounted to a fixture	—	500	—	G's
Mechanical Vibration (Mil-STD-883D, 20-2000Hz)	—	Vertical (Suffix N) Horizontal (Suffixes A, C)	—	10 (2) 20 (2)	—	G's
Weight	—	—	—	90	—	grams

Notes: (1) The maximum output current is limited to 8.5A or 100/V_{OUT}, whichever is less.

(2) Only the case pins on the through-hole package types (suffixes N & A) must be soldered. For more information see the applicable package outline drawing.

PT4475—24V

100-W 8.5-A Programmable
Isolated DC/DC Converter

Pin-Out Information

Pin	Function	Pin	Function
1	+V _{in}	14	-V _{out}
2	-V _{in}	15	-V _{out}
3	Inhibit	16	-V _{out}
4	Do not connect	17	-V _{out}
5	Do not connect	18	-V _{out}
6	Sync	19	-V _{out}
7	+V _{sense}	20	-V _{sense}
8	+V _{out}	21	VID0
9	+V _{out}	22	VID1
10	+V _{out}	23	VID2
11	+V _{out}	24	VID3
12	+V _{out}	25	VID4
13	+V _{out}	26	Share

Programming Information

VID3	VID2	VID1	VID0	VID4=1 V _{out}	VID4=0 V _{out}
1	1	1	1	10.0	6.5
1	1	1	0	10.5	6.75
1	1	0	1	11.0	7.0
1	1	0	0	11.5	7.25
1	0	1	1	12.0	7.5
1	0	1	0	12.5	7.75
1	0	0	1	13.0	8.0
1	0	0	0	13.5	8.25
0	1	1	1	14.0	8.5
0	1	1	0	14.5	8.75
0	1	0	1	15.0	9.0
0	1	0	0	15.5	9.25
0	0	1	1	16.0	9.5
0	0	1	0	16.5	9.75
0	0	0	1	17.0	10.0
0	0	0	0	17.5	10.25

Logic 0 = Pin 20 potential (remote sense gnd)
Logic 1 = Open circuit (no pull-up resistors)
VID4 may not be changed while the unit is operating.

Ordering Information

PT4475□ = +6.5V to 17.5V

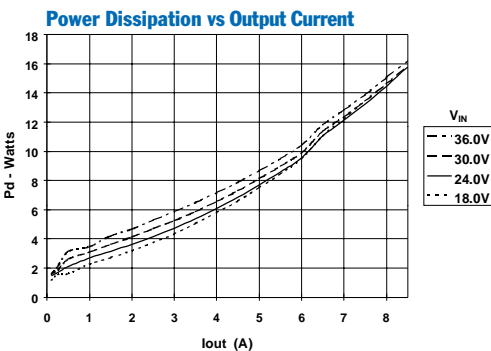
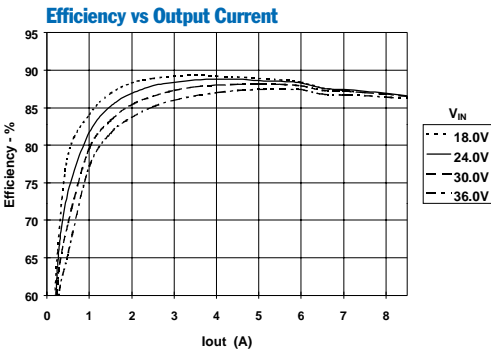
PT Series Suffix (PT1234x)

Case/Pin Configuration	Order Suffix	Package Code
Vertical	N	(EKD)
Horizontal	A	(EKA)
SMD	C	(EKC)

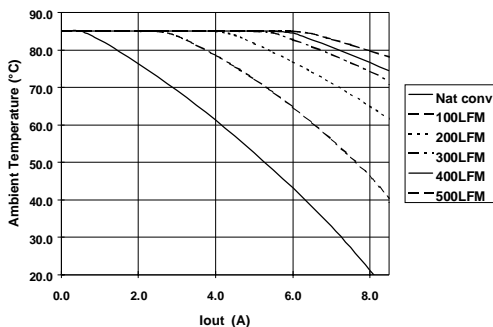
(Reference the applicable package code drawing for the dimensions and PC board layout)

TYPICAL CHARACTERISTICS

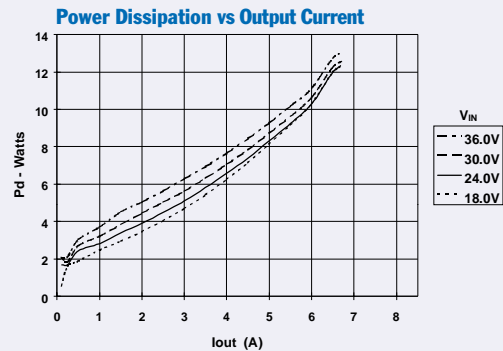
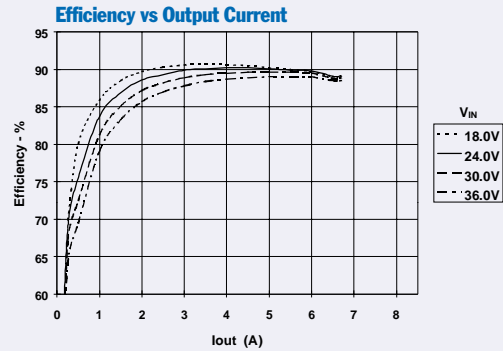
PT4475, V_o = 12.0V (See Note A)



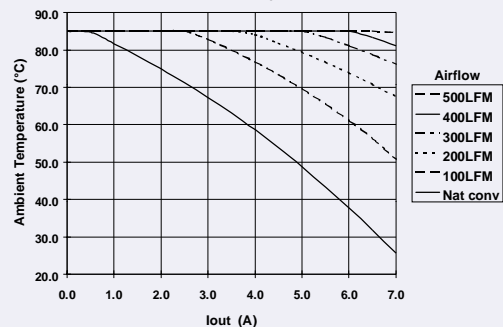
Safe Operating Area, V_o = 12V (See Note B)



PT4475, V_o = 15.0V (See Note A)



Safe Operating Area, V_o = 15V (See Note B)

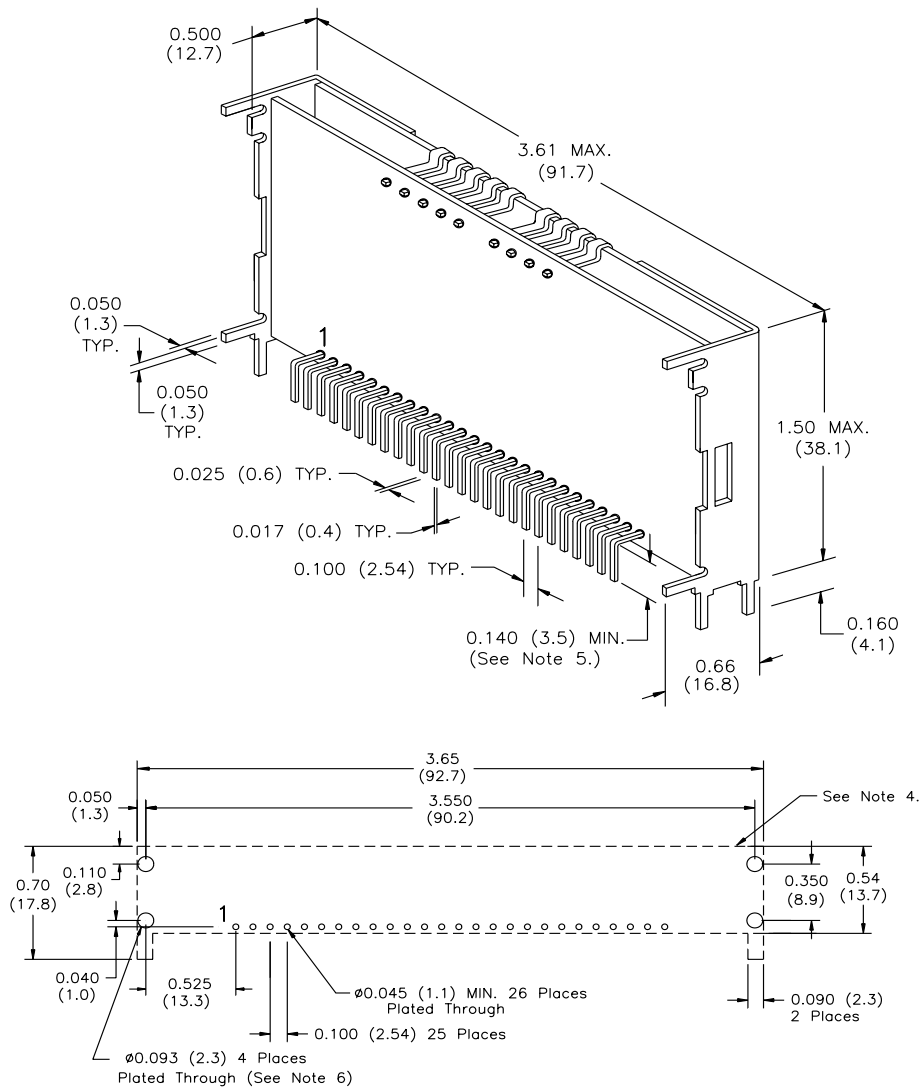


Note A: All data listed in the above graphs has been developed from actual products tested at 25°C. This data is considered typical data for the DC/DC Converter.

Note B: SOA curves represent operating conditions at which the temperature of the metal case is at or below the maximum specified 100°C

PACKAGE INFORMATION AND DIMENSIONS

Vertical Through-Hole Mount (Suffix N)



PC Layout

Notes: (Rev. E)

- 1: All dimensions are in inches (mm).
- 2: 2 place decimals are ± 0.030 (± 0.8 mm).
- 3: 3 place decimals are ± 0.010 (± 0.3 mm).
- 4: Recommended mechanical keep out area (dotted line).
- 5: Electrical pin length mounted on printed circuit board seating plane to pin end.
- 6: Option (Electrically connect heatsink pins to secondary ground.)

The drawing shows the top and bottom views of a PCB layout. The top view includes dimensions for the overall size and component placement. The bottom view shows the layout of plated through holes and ground connections.

Top View Dimensions:

- 1.62 MAX. (41.1)
- 1.50 MAX. (38.1)
- 3.61 MAX. (91.7)
- 0.025 (0.6) TYP.
- 0.017 (0.4) TYP.
- 0.100 (2.54) TYP.
- 0.050 (1.3) TYP.
- 0.050 (1.3) TYP.
- 0.140 (3.5) MIN. (See Note 5.)
- 0.500 (12.7)
- 0.160 (4.1)

Bottom View Dimensions:

- 0.050 (1.3)
- 3.645 (92.6)
- 3.550 (90.2)
- 1.175 (29.8)
- 1.198 (30.4)
- 0.250 (6.3)
- 0.047 (1.2)
- 0.080 (2.0)
- 0.160 (4.0)
- 0.110 (2.8)
- 1.280 (32.5)
- 1.457 (37.0)
- 0.200 (5.1)
- 0.090 (2.3) TYP.
- 0.525 (13.3)
- 0.100 (2.54) 25 Places
- 0.045 (1.1) MIN. 26 Places Plated Through
- 0.093 (2.3) MIN. 4 Places Plated Through connected to secondary ground plane

Notes:

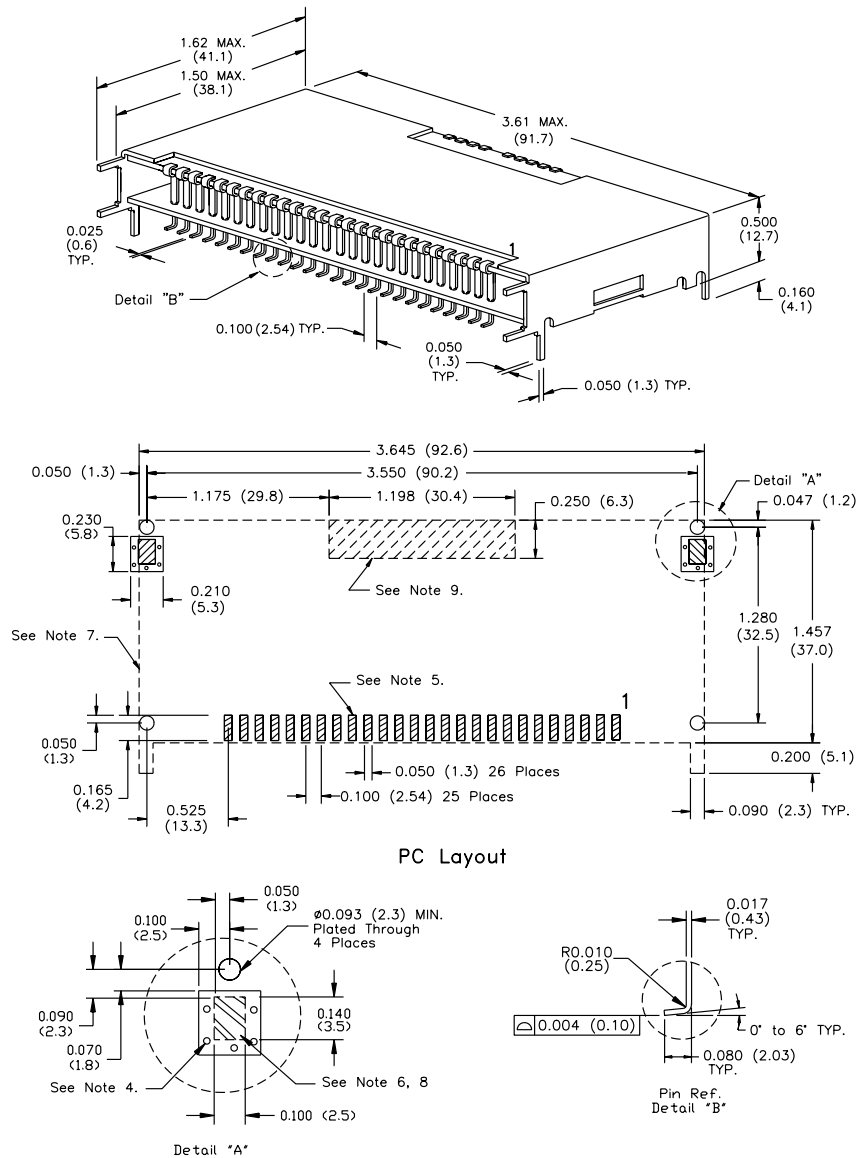
- See Note 4. (2 Places)
- See Note 6.

PC Layout

- 1: All dimensions are in inches (mm).
- 2: 2 place decimals are ± 0.030 ($\pm 0.8\text{mm}$).
- 3: 3 place decimals are ± 0.010 ($\pm 0.3\text{mm}$).
- 4: Recommended mechanical keep out area (dotted lines).
- 5: Electrical pin length mounted on printed circuit board seating plane to pin end.
- 6: No copper, power or signal traces in this area.

PACKAGE INFORMATION AND DIMENSIONS

Horizontal Surface Mount (Suffix C)



Notes: (Rev. E)

- 1: All dimensions are in inches (mm).
- 2: 2 place decimals are ± 0.030 ($\pm 0.8\text{mm}$).
- 3: 3 place decimals are ± 0.010 ($\pm 0.3\text{mm}$).
- 4: Vias are recommended to improve copper adhesion.
- 5: Power pin connections should utilize two or more vias per input, ground and output pin.
- 6: Solder mask openings to copper island for solder joints to mechanical pins.
- 7: Recommended mechanical keep out area (dotted lines).
- 8: Electrically connected case to secondary ground plane.
- 9: No copper, power or signal traces in this area.

PACKAGING INFORMATION

Orderable Device	Status (1)	Package Type	Package Drawing	Pins	Package Qty	Eco Plan (2)	Lead/Ball Finish	MSL Peak Temp (3)	Samples (Requires Login)
PT4475A	LIFEBUY	SIP MODULE	EKA	26	6	TBD	Call TI	Level-1-215C-UNLIM	

(1) The marketing status values are defined as follows:

ACTIVE: Product device recommended for new designs.

LIFEBUY: TI has announced that the device will be discontinued, and a lifetime-buy period is in effect.

NRND: Not recommended for new designs. Device is in production to support existing customers, but TI does not recommend using this part in a new design.

PREVIEW: Device has been announced but is not in production. Samples may or may not be available.

OBSOLETE: TI has discontinued the production of the device.

(2) Eco Plan - The planned eco-friendly classification: Pb-Free (RoHS), Pb-Free (RoHS Exempt), or Green (RoHS & no Sb/Br) - please check <http://www.ti.com/productcontent> for the latest availability information and additional product content details.

TBD: The Pb-Free/Green conversion plan has not been defined.

Pb-Free (RoHS): TI's terms "Lead-Free" or "Pb-Free" mean semiconductor products that are compatible with the current RoHS requirements for all 6 substances, including the requirement that lead not exceed 0.1% by weight in homogeneous materials. Where designed to be soldered at high temperatures, TI Pb-Free products are suitable for use in specified lead-free processes.

Pb-Free (RoHS Exempt): This component has a RoHS exemption for either 1) lead-based flip-chip solder bumps used between the die and package, or 2) lead-based die adhesive used between the die and leadframe. The component is otherwise considered Pb-Free (RoHS compatible) as defined above.

Green (RoHS & no Sb/Br): TI defines "Green" to mean Pb-Free (RoHS compatible), and free of Bromine (Br) and Antimony (Sb) based flame retardants (Br or Sb do not exceed 0.1% by weight in homogeneous material)

(3) MSL, Peak Temp. -- The Moisture Sensitivity Level rating according to the JEDEC industry standard classifications, and peak solder temperature.

Important Information and Disclaimer: The information provided on this page represents TI's knowledge and belief as of the date that it is provided. TI bases its knowledge and belief on information provided by third parties, and makes no representation or warranty as to the accuracy of such information. Efforts are underway to better integrate information from third parties. TI has taken and continues to take reasonable steps to provide representative and accurate information but may not have conducted destructive testing or chemical analysis on incoming materials and chemicals. TI and TI suppliers consider certain information to be proprietary, and thus CAS numbers and other limited information may not be available for release.

In no event shall TI's liability arising out of such information exceed the total purchase price of the TI part(s) at issue in this document sold by TI to Customer on an annual basis.

IMPORTANT NOTICE

Texas Instruments Incorporated and its subsidiaries (TI) reserve the right to make corrections, enhancements, improvements and other changes to its semiconductor products and services per JESD46, latest issue, and to discontinue any product or service per JESD48, latest issue. Buyers should obtain the latest relevant information before placing orders and should verify that such information is current and complete. All semiconductor products (also referred to herein as "components") are sold subject to TI's terms and conditions of sale supplied at the time of order acknowledgment.

TI warrants performance of its components to the specifications applicable at the time of sale, in accordance with the warranty in TI's terms and conditions of sale of semiconductor products. Testing and other quality control techniques are used to the extent TI deems necessary to support this warranty. Except where mandated by applicable law, testing of all parameters of each component is not necessarily performed.

TI assumes no liability for applications assistance or the design of Buyers' products. Buyers are responsible for their products and applications using TI components. To minimize the risks associated with Buyers' products and applications, Buyers should provide adequate design and operating safeguards.

TI does not warrant or represent that any license, either express or implied, is granted under any patent right, copyright, mask work right, or other intellectual property right relating to any combination, machine, or process in which TI components or services are used. Information published by TI regarding third-party products or services does not constitute a license to use such products or services or a warranty or endorsement thereof. Use of such information may require a license from a third party under the patents or other intellectual property of the third party, or a license from TI under the patents or other intellectual property of TI.

Reproduction of significant portions of TI information in TI data books or data sheets is permissible only if reproduction is without alteration and is accompanied by all associated warranties, conditions, limitations, and notices. TI is not responsible or liable for such altered documentation. Information of third parties may be subject to additional restrictions.

Resale of TI components or services with statements different from or beyond the parameters stated by TI for that component or service voids all express and any implied warranties for the associated TI component or service and is an unfair and deceptive business practice. TI is not responsible or liable for any such statements.

Buyer acknowledges and agrees that it is solely responsible for compliance with all legal, regulatory and safety-related requirements concerning its products, and any use of TI components in its applications, notwithstanding any applications-related information or support that may be provided by TI. Buyer represents and agrees that it has all the necessary expertise to create and implement safeguards which anticipate dangerous consequences of failures, monitor failures and their consequences, lessen the likelihood of failures that might cause harm and take appropriate remedial actions. Buyer will fully indemnify TI and its representatives against any damages arising out of the use of any TI components in safety-critical applications.

In some cases, TI components may be promoted specifically to facilitate safety-related applications. With such components, TI's goal is to help enable customers to design and create their own end-product solutions that meet applicable functional safety standards and requirements. Nonetheless, such components are subject to these terms.

No TI components are authorized for use in FDA Class III (or similar life-critical medical equipment) unless authorized officers of the parties have executed a special agreement specifically governing such use.

Only those TI components which TI has specifically designated as military grade or "enhanced plastic" are designed and intended for use in military/aerospace applications or environments. Buyer acknowledges and agrees that any military or aerospace use of TI components which have **not** been so designated is solely at the Buyer's risk, and that Buyer is solely responsible for compliance with all legal and regulatory requirements in connection with such use.

TI has specifically designated certain components as meeting ISO/TS16949 requirements, mainly for automotive use. In any case of use of non-designated products, TI will not be responsible for any failure to meet ISO/TS16949.

Products

Audio	www.ti.com/audio
Amplifiers	amplifier.ti.com
Data Converters	dataconverter.ti.com
DLP® Products	www.dlp.com
DSP	dsp.ti.com
Clocks and Timers	www.ti.com/clocks
Interface	interface.ti.com
Logic	logic.ti.com
Power Mgmt	power.ti.com
Microcontrollers	microcontroller.ti.com
RFID	www.ti-rfid.com
OMAP Applications Processors	www.ti.com/omap
Wireless Connectivity	www.ti.com/wirelessconnectivity

Applications

Automotive and Transportation	www.ti.com/automotive
Communications and Telecom	www.ti.com/communications
Computers and Peripherals	www.ti.com/computers
Consumer Electronics	www.ti.com/consumer-apps
Energy and Lighting	www.ti.com/energy
Industrial	www.ti.com/industrial
Medical	www.ti.com/medical
Security	www.ti.com/security
Space, Avionics and Defense	www.ti.com/space-avionics-defense
Video and Imaging	www.ti.com/video

TI E2E Community

e2e.ti.com