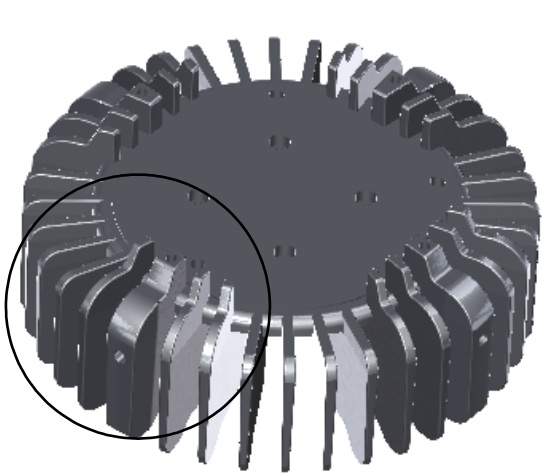


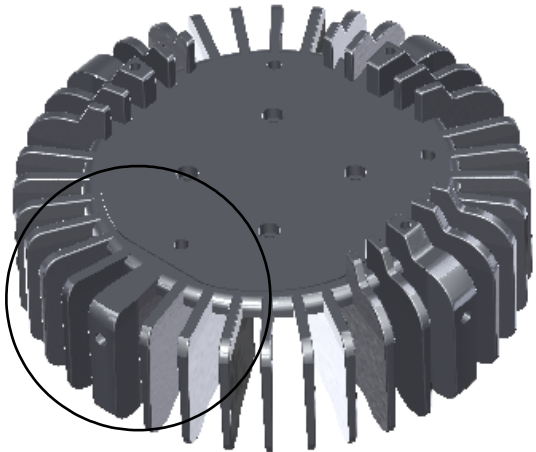
NOTES:

1. APPROXIMATE MASS VALUE : 500g.
2. DIMENSIONS AND VIEWS DESCRIBE ALL PART NUMBERS UNLESS OTHERWISE NOTED.
3. E-COAT SURFACE TREATMENT IS APPLIED TO ALL SURFACES UNLESS OTHERWISE NOTED.
4. THIS SURFACE TO BE FREE OF ANY TREATMENT.

REV	DESCRIPTION	BY	APR	DATE
A01	INITIAL RELEASE	CHC	BLN	2009-09-02
A02	SYNJET MOUNTING BOSS CHANGE; PCN-1000-01	BLN	BLN	2010-08-31

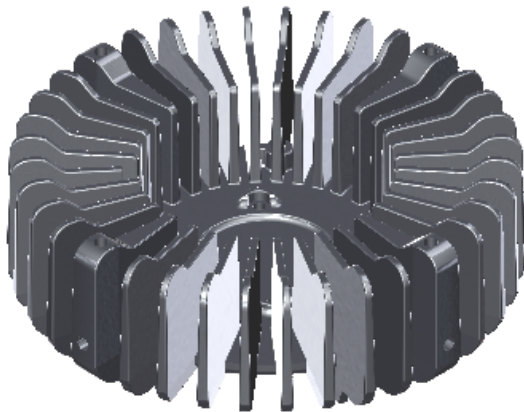


-002


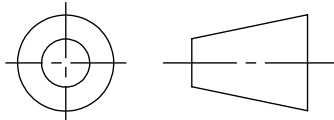


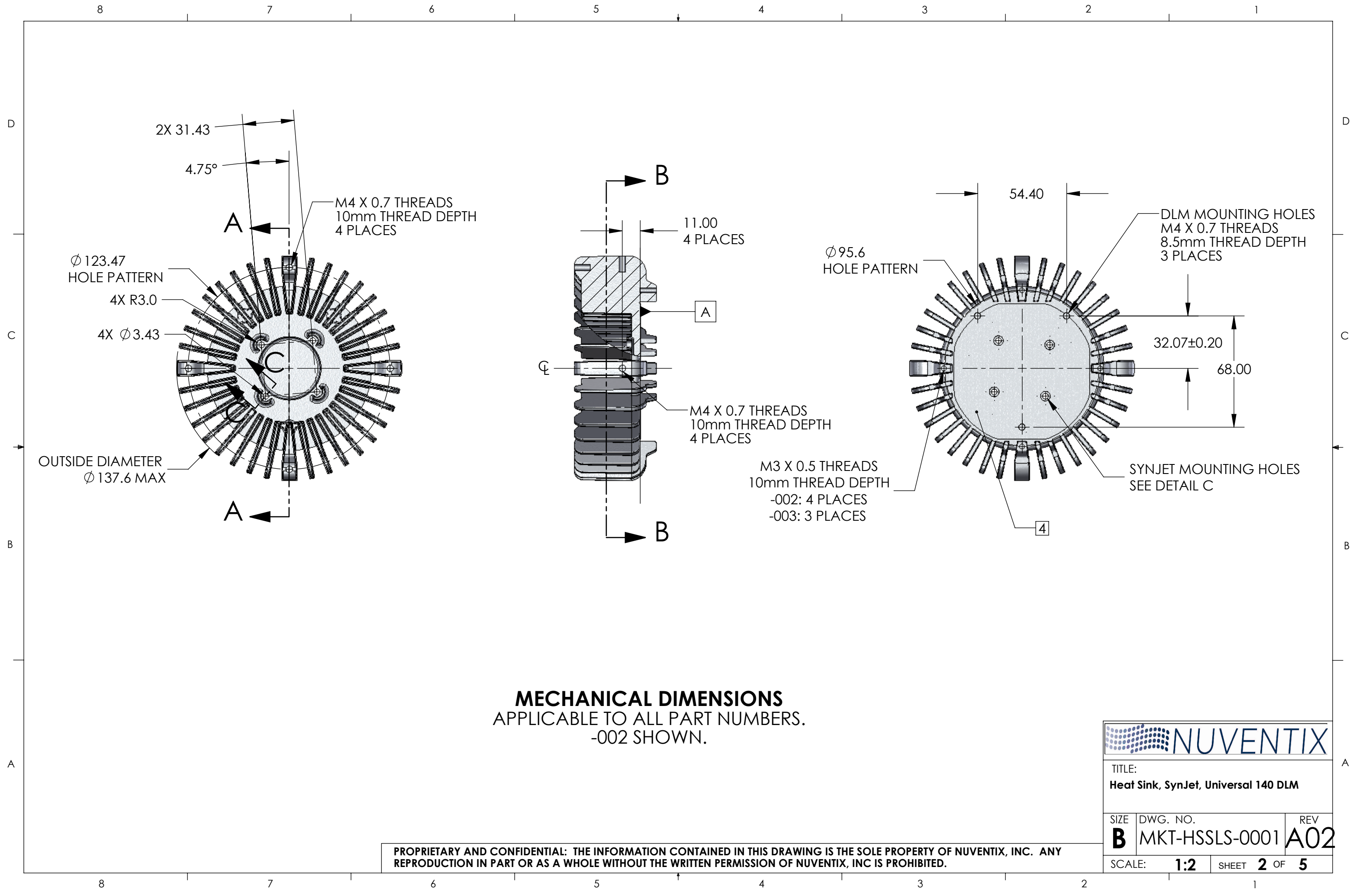
-003

VISUAL IDENTIFICATION OF HEATSINKS



ISO VIEW FOR REFERENCE ONLY.
(HSSLS-CALBL-002 SHOWN)

AVAILABLE HEAT SINK PARTNUMBERS							
NUVENTIX PART NUMBER			DESCRIPTION				
HSSLS-CALBL-002			Heat Sink to be used with Fortimo DLMs (square in shape.)				
HSSLS-CALBL-003			Heat Sink to be used with Fortimo or Lexel DLMs (rectangular in shape.)				
UNLESS OTHERWISE SPECIFIED: -ALL DIMENSIONS IN MILLIMETERS -DRAFT ANGLES TO BE 3 DEGREES -DIMENSIONS INCLUDE PLATING TOLERANCES: .X: ± 0.2 .XX: ± 0.1 ANGLES: ±0.5° MATERIAL N/A FINISH N/A DO NOT SCALE DRAWING			NAME	DATE			
		DRAWN	CHC	15JUN09			
		CHECKED	DNG	15JUN09	TITLE: Heat Sink, SynJet, Universal 140 DLM		
		ENG APPR.	DNG	15JUN09			
		THIRD ANGLE PROJECTION			DWG. NO.	REV	
					MKT-HSSLS-0001		A02
					SCALE: 1:2	SHEET 1 OF 5	



MECHANICAL DIMENSIONS
APPLICABLE TO ALL PART NUMBERS.
-002 SHOWN.

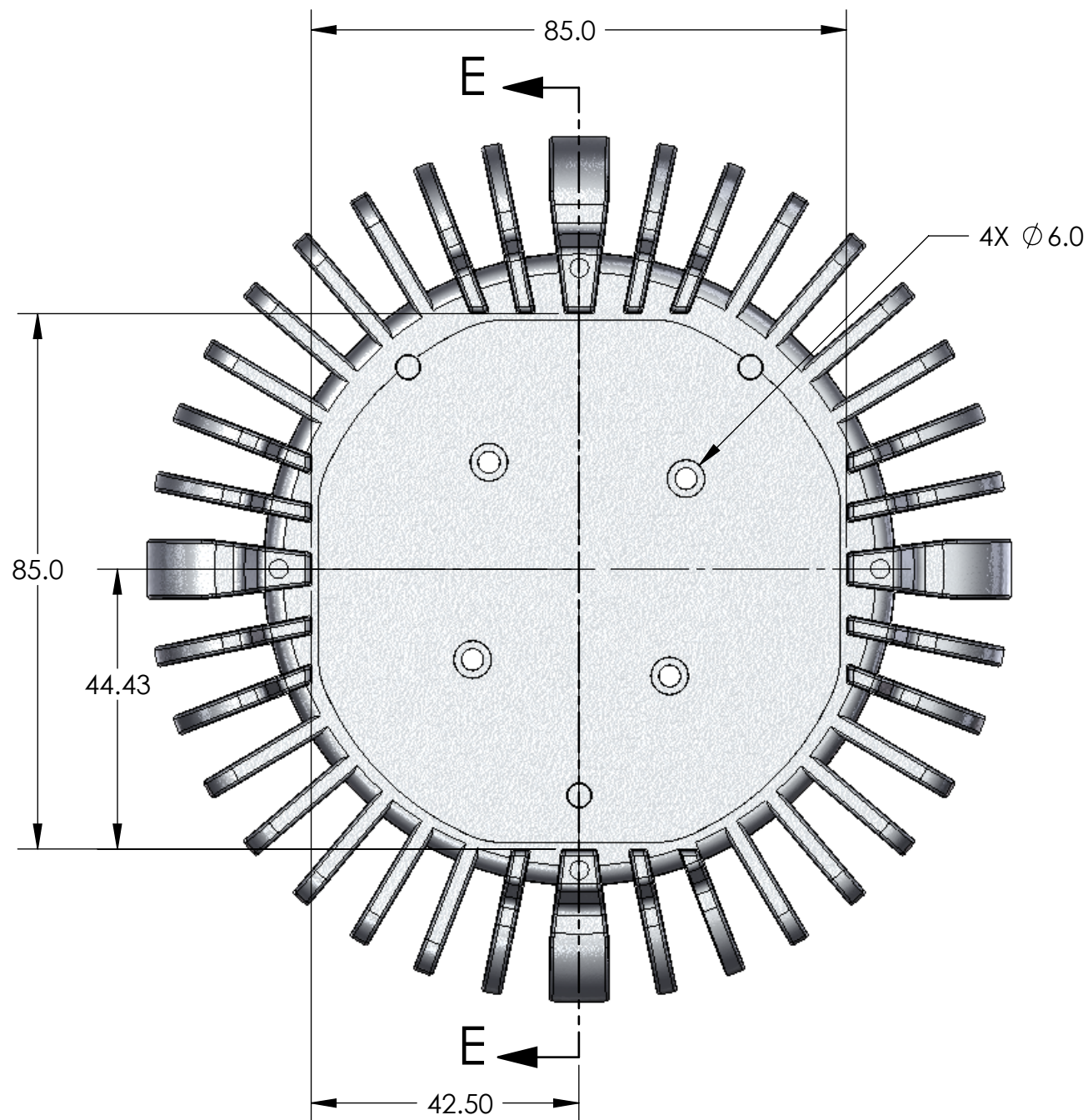
PROPRIETARY AND CONFIDENTIAL: THE INFORMATION CONTAINED IN THIS DRAWING IS THE SOLE PROPERTY OF NUVENTIX, INC. ANY REPRODUCTION IN PART OR AS A WHOLE WITHOUT THE WRITTEN PERMISSION OF NUVENTIX, INC IS PROHIBITED.



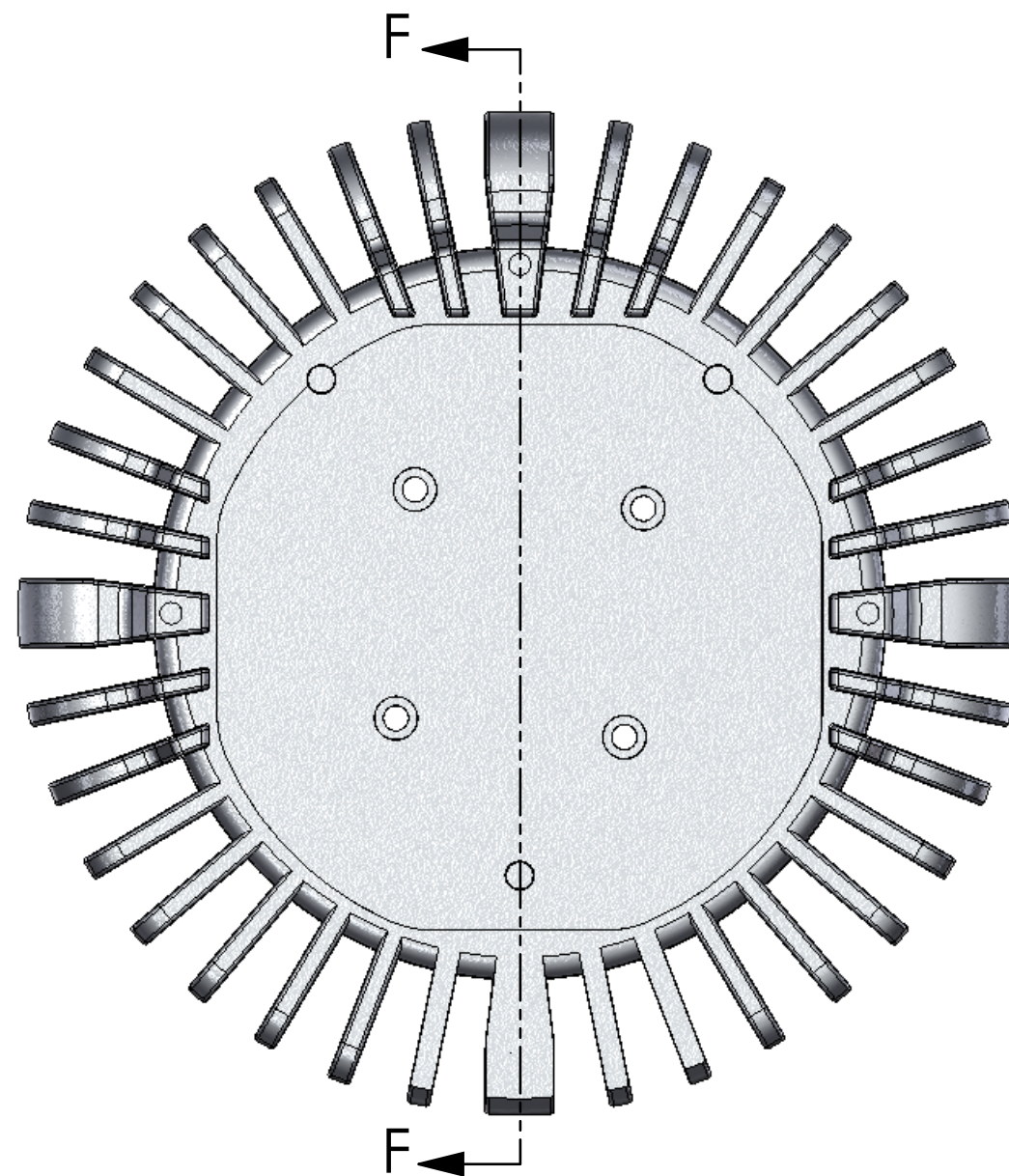
TITLE:
Heat Sink, SynJet, Universal 140 DLM

SIZE	DWG. NO.	REV
B	MKT-HSSLS-0001	A02


SCALE: **1:2** SHEET **2** OF **5**



-002



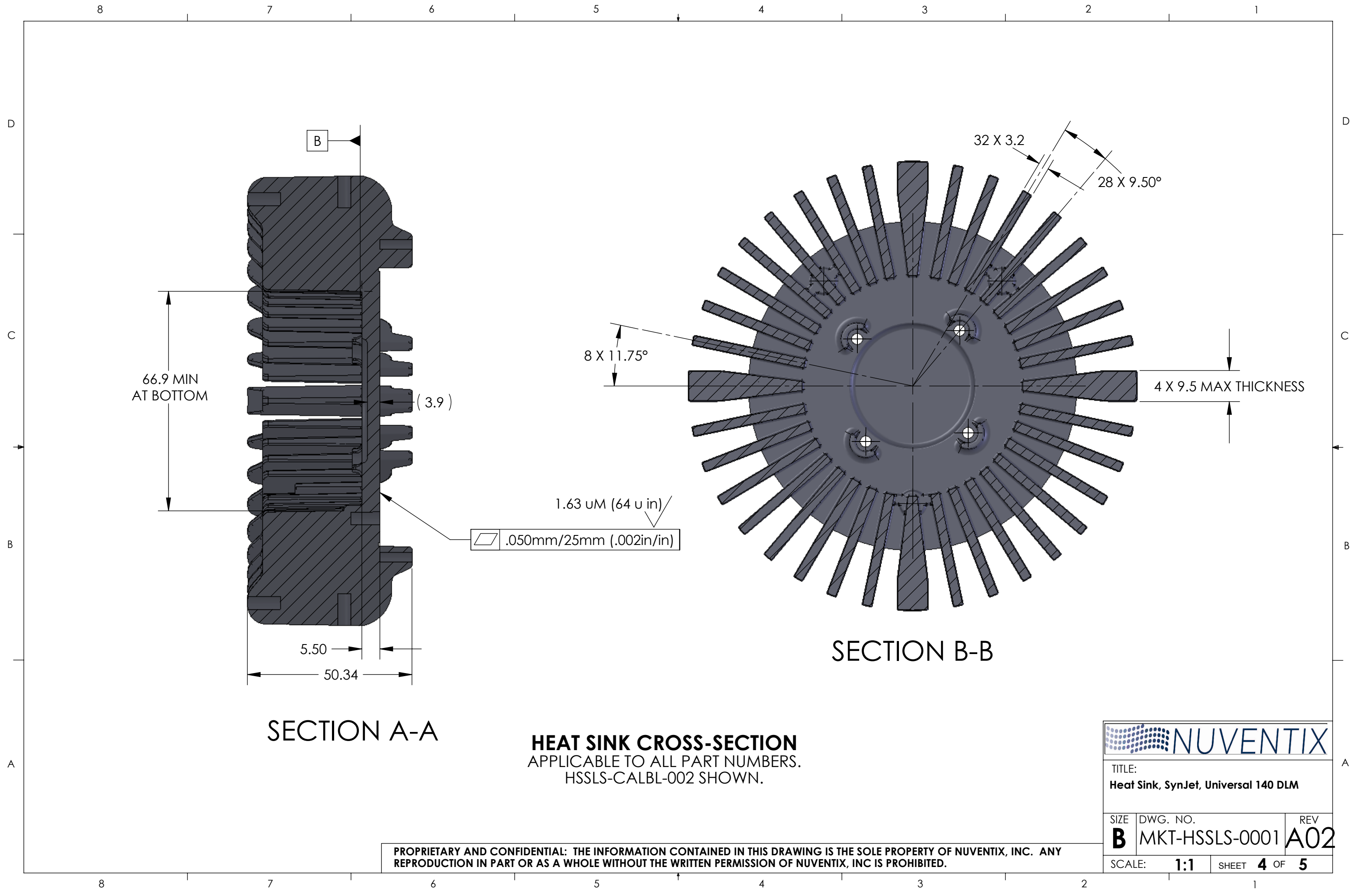
-003


 **NUVENTIX**

TITLE:
Heat Sink, SynJet, Universal 140 DLM

SIZE	DWG. NO.	REV
B	MKT-HSSLS-0001	A02
SCALE:	1:1	SHEET 3 OF 5

PROPRIETARY AND CONFIDENTIAL: THE INFORMATION CONTAINED IN THIS DRAWING IS THE SOLE PROPERTY OF NUVENTIX, INC. ANY REPRODUCTION IN PART OR AS A WHOLE WITHOUT THE WRITTEN PERMISSION OF NUVENTIX, INC IS PROHIBITED.

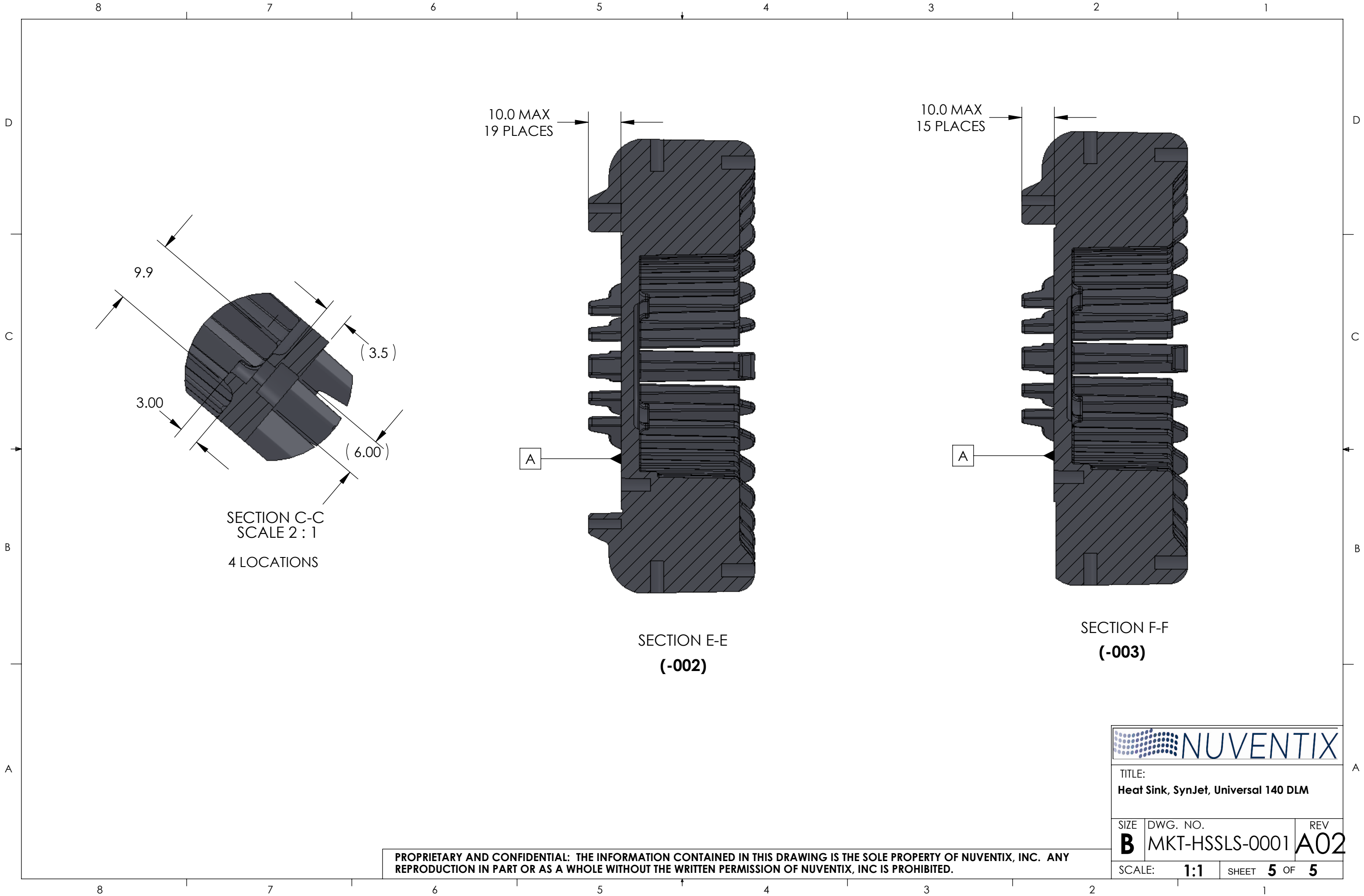




NUVENTIX

TITLE: Heat Sink, SynJet, Universal 140 DLM		
SIZE B	DWG. NO. MKT-HSSLS-0001	REV A02
SCALE: 1:1		SHEET 4 OF 5

PROPRIETARY AND CONFIDENTIAL: THE INFORMATION CONTAINED IN THIS DRAWING IS THE SOLE PROPERTY OF NUVENTIX, INC. ANY REPRODUCTION IN PART OR AS A WHOLE WITHOUT THE WRITTEN PERMISSION OF NUVENTIX, INC IS PROHIBITED.



9.9

3.00

(3.5)

(6.00)

SECTION C-C
SCALE 2 : 1
4 LOCATIONS

10.0 MAX
19 PLACES

A

SECTION E-E
(-002)

10.0 MAX
15 PLACES

A

SECTION F-F
(-003)



TITLE:
Heat Sink, SynJet, Universal 140 DLM

SIZE	DWG. NO.	REV
B	MKT-HSSLS-0001	A02

SCALE:	SHEET	OF	5
1:1	5		

PROPRIETARY AND CONFIDENTIAL: THE INFORMATION CONTAINED IN THIS DRAWING IS THE SOLE PROPERTY OF NUVENTIX, INC. ANY REPRODUCTION IN PART OR AS A WHOLE WITHOUT THE WRITTEN PERMISSION OF NUVENTIX, INC IS PROHIBITED.