

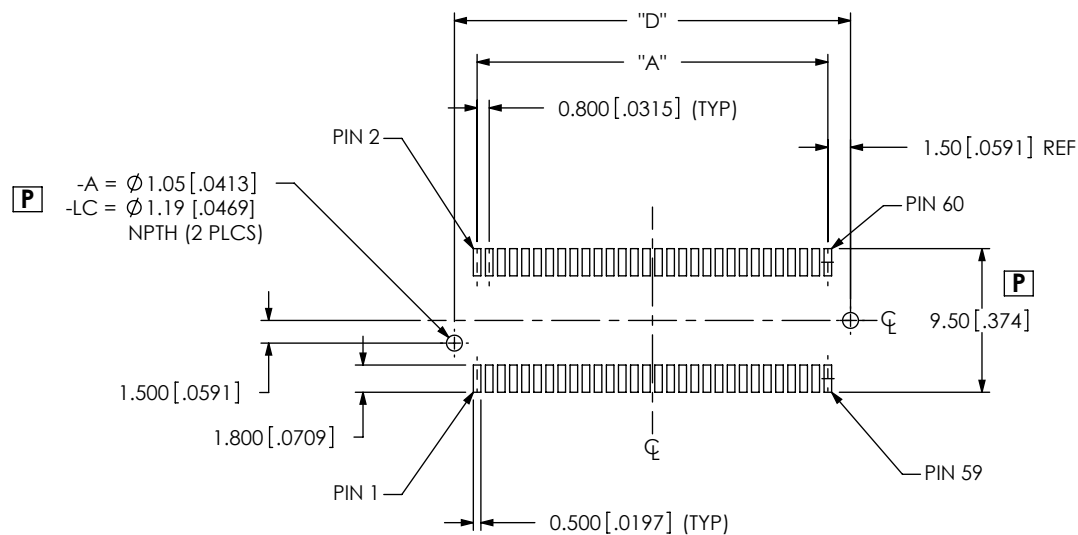
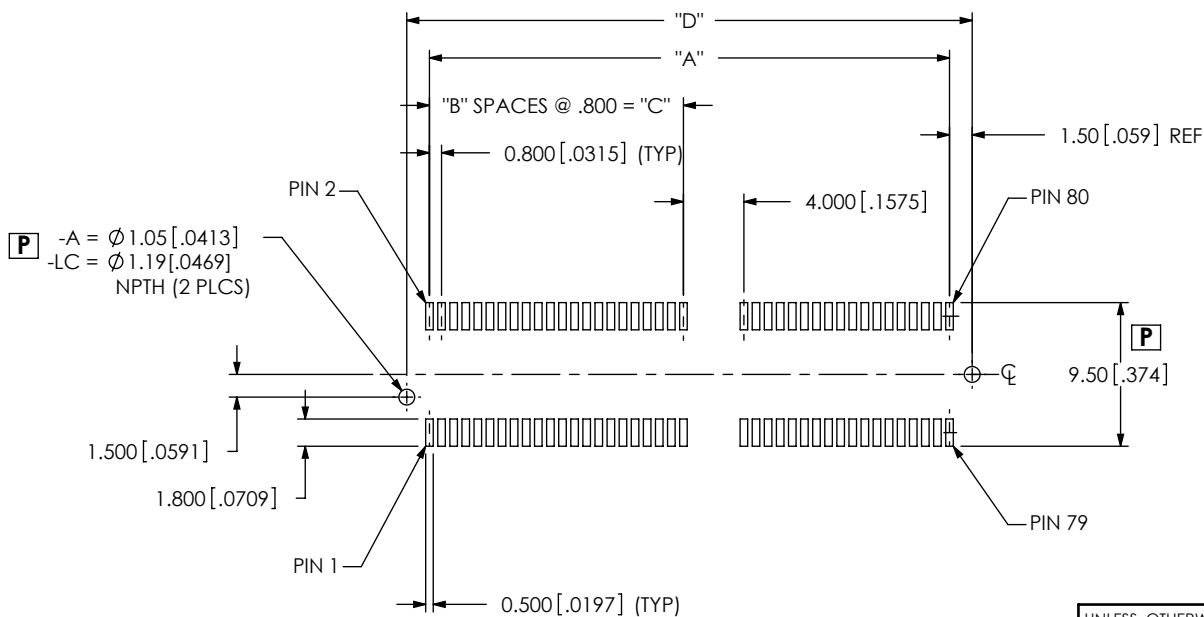
RECOMMENDED PCB LAYOUT FOR MEC8X-1XX-XX-XX-DV-XX PDESIGNED & DIMENSIONED
IN MILLIMETERS [INCHES]P

TABLE 1				
POSITIONS	"A"	"B"	"C"	"D"
-10	7.200 [1.2835]	N/A	N/A	10.200 [1.4016]
-20	15.200 [1.5984]	N/A	N/A	18.200 [1.7165]
-30	23.200 [1.9134]	N/A	N/A	26.200 [1.0315]
-35	27.200 [1.0709]	N/A	N/A	30.200 [1.1890]
-40	34.400 [1.3543]	21	16.80 [1.661]	37.400 [1.4724]
-45	38.400 [1.5118]	23	18.40 [1.724]	41.400 [1.6299]
-50	42.400 [1.6693]	26	20.80 [1.819]	45.400 [1.7874]
-60	50.400 [1.9843]	31	24.80 [1.976]	53.400 [2.1024]
-70	58.400 [2.2992]	36	28.80 [1.134]	61.400 [2.4173]

P NOTES:

1. MEASUREMENTS SYMMETRIC ABOUT CENTERLINE

P NOTES:

1. MEASUREMENTS SYMMETRIC ABOUT CENTERLINE

UNLESS OTHERWISE SPECIFIED
TOLERANCES ARE:

DECIMALS

.X: ± 0.3 [.01]
 .XX: ± 0.10 [.004]
 .XXX: ± 0.050 [.0020]

PROPRIETARY NOTE

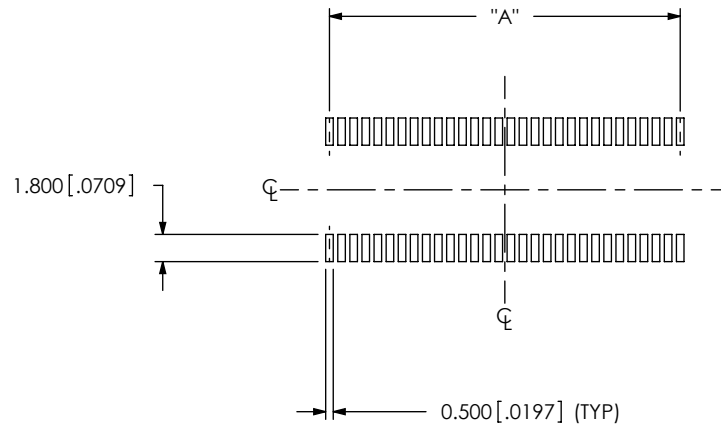
THIS DOCUMENT CONTAINS INFORMATION
 CONFIDENTIAL AND PROPRIETARY TO
 SAMTEC, INC. AND SHALL NOT BE REPRODUCED
 OR TRANSFERRED TO OTHER DOCUMENTS OR
 DISCLOSED TO OTHERS OR USED FOR ANY
 PURPOSE OTHER THAN THAT WHICH IT WAS
 OBTAINED WITHOUT THE EXPRESSED WRITTEN
 CONSENT OF SAMTEC, INC.

samtec

520 PARK EAST BLVD, NEW ALBANY, IN 47150
 PHONE: 812-944-6733 FAX: 812-948-5047
 e-Mail info@SAMTEC.com code 55322

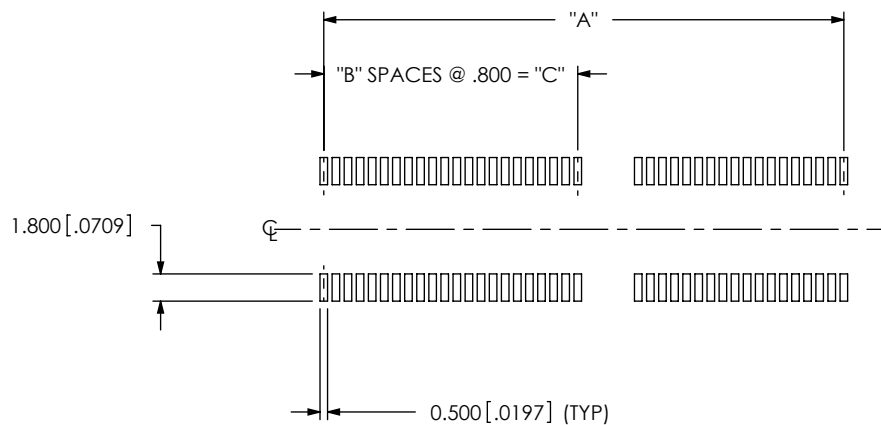
NOTE:
STENCIL TO BE .006[.15] THICK

**DESIGNED & DIMENSIONED
IN MILLIMETERS [INCHES]**



P FIG 3
-30 POSITION SHOWN
(SAME AS FIG 1, EXCEPT AS SHOWN)
(USE FOR 10, 20 & 30 POSITIONS)

NOTE:
STENCIL TO BE .006[.15] THICK



P FIG 4
-40 POSITION SHOWN
(SAME AS FIG 2, EXCEPT AS SHOWN)
(USE FOR 40 THRU 70 POSITIONS)

PROPRIETARY NOTE

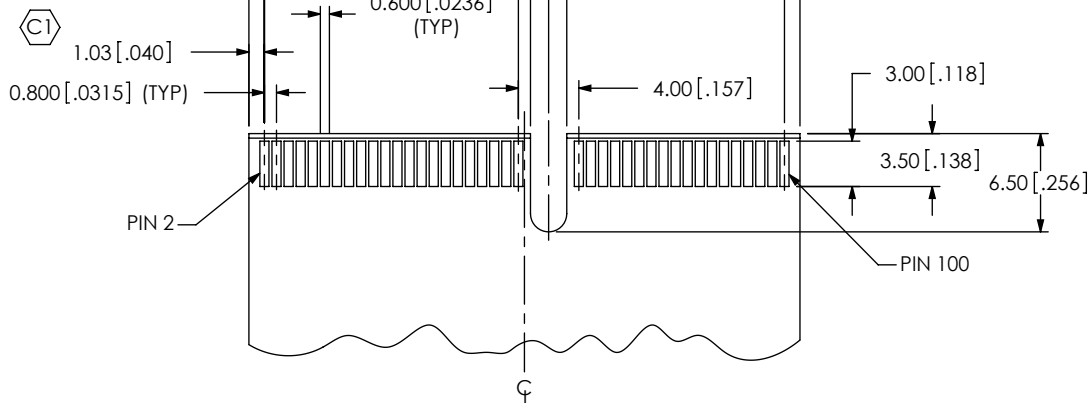
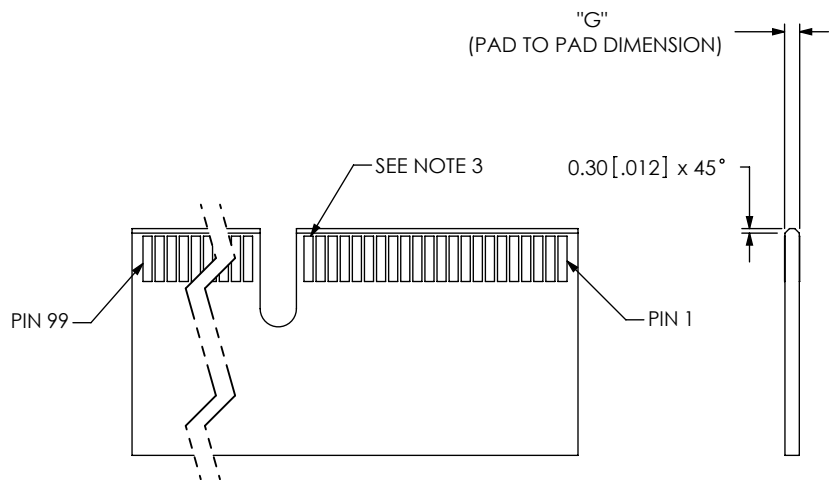
THIS DOCUMENT CONTAINS INFORMATION
CONFIDENTIAL AND PROPRIETARY TO
SAMTEC, INC. AND SHALL NOT BE REPRODUCED
OR TRANSFERRED TO OTHER DOCUMENTS OR
DISCLOSED TO OTHERS OR USED FOR ANY
PURPOSE OTHER THAN THAT WHICH IT WAS
OBTAINED WITHOUT THE EXPRESSED WRITTEN
CONSENT OF SAMTEC, INC.

samtec

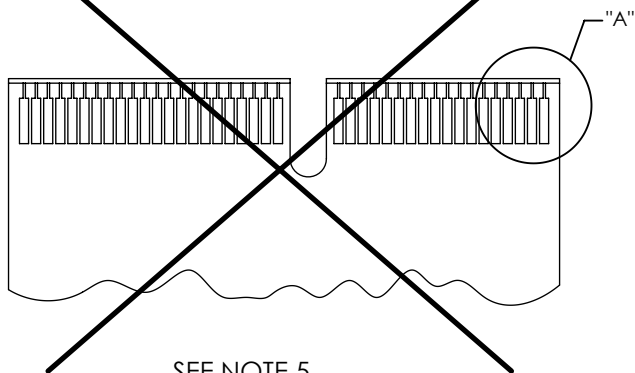
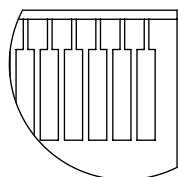
520 PARK EAST BLVD, NEW ALBANY, IN 47150
PHONE: 812-944-6733 FAX: 812-948-5047
e-Mail info@SAMTEC.com code 55322

P **TABLE 3**
DESIGNED & DIMENSIONED
IN MILLIMETERS [INCHES]

MEC8 LEAD STYLE	"G"
-01	1.000[.0394] ± .100[.0039]
-02	1.600[.0630] ± .160[.0063]



P **FIG 5**
-50 POSITION SHOWN



P **TABLE 2**

POSITIONS	"E"	"F"
-10	9.26 [.365]	N/A
-20	17.25 [.679]	N/A
-30	25.25 [.994]	N/A
-35	29.25 [1.152]	N/A
-40	36.45 [1.435]	18.80 [.740]
-45	40.45 [1.593]	20.40 [.803]
-50	44.45 [1.750]	22.80 [.898]
-60	52.45 [2.065]	26.80 [1.055]
-70	60.45 [2.380]	30.80 [1.213]

- NOTES:
- 10, -20 AND -30 CARDS HAVE NO SLOT.
 - ALL DIMENSIONS ARE SYMMETRIC ABOUT THE CENTERLINE.
 - PLATING TO BE .000030 INCHES GOLD WITH A HARDNESS OF 120-200 KNOOP PER ASTM B 488 TYPE 2, GRADE C.
 - Φ REPRESENTS CRITICAL DIMENSION.
 - FOR PROPER CONTACT REGISTRATION, PLATING BUS TIE TO BE THE WIDTH OF THE EDGE FINGER.

PROPRIETARY NOTE
THIS DOCUMENT CONTAINS INFORMATION
CONFIDENTIAL AND PROPRIETARY TO
SAMTEC, INC. AND SHALL NOT BE REPRODUCED
OR TRANSFERRED TO OTHER DOCUMENTS OR
DISCLOSED TO OTHERS OR USED FOR ANY
PURPOSE OTHER THAN THAT WHICH IT WAS
OBTAINED WITHOUT THE EXPRESSED WRITTEN
CONSENT OF SAMTEC, INC.

samtec

520 PARK EAST BLVD, NEW ALBANY, IN 47150
PHONE: 812-944-6733 FAX: 812-948-5047
e-Mail info@SAMTEC.com code 55322