

## LMC6084 Precision CMOS Quad Operational Amplifier

Check for Samples: [LMC6084](#)

### FEATURES

(Typical Unless Otherwise Stated)

- **Low Offset Voltage:** 150  $\mu$ V
- **Operates from 4.5V to 15V Single Supply**
- **Ultra Low Input Bias Current:** 10 fA
- **Output Swing to within 20 mV of Supply Rail, 100k Load**
- **Input Common-Mode Range Includes  $V^-$**
- **High Voltage Gain:** 130 dB
- **Improved Latchup Immunity**

### APPLICATIONS

- **Instrumentation Amplifier**
- **Photodiode and Infrared Detector Preamplifier**
- **Transducer Amplifiers**
- **Medical Instrumentation**
- **D/A Converter**
- **Charge Amplifier for Piezoelectric Transducers**

### DESCRIPTION

The LMC6084 is a precision quad low offset voltage operational amplifier, capable of single supply operation. Performance characteristics include ultra low input bias current, high voltage gain, rail-to-rail output swing, and an input common mode voltage range that includes ground. These features, plus its low offset voltage, make the LMC6084 ideally suited for precision circuit applications.

Other applications using the LMC6084 include precision full-wave rectifiers, integrators, references, and sample-and-hold circuits.

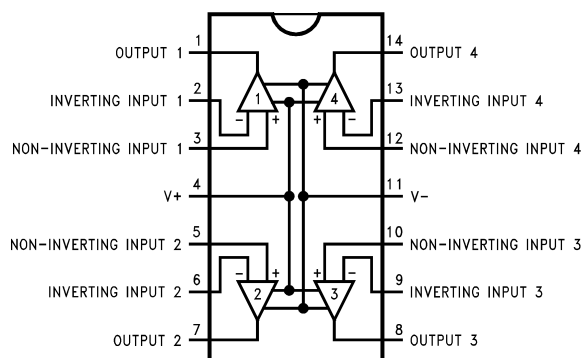
This device is built with National's advanced Double-Poly Silicon-Gate CMOS process.

For designs with more critical power demands, see the LMC6064 precision quad micropower operational amplifier.

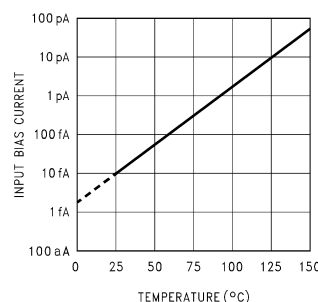
For a single or dual operational amplifier with similar features, see the LMC6081 or LMC6082 respectively.

**PATENT PENDING**

### Connection Diagram



**Figure 1. 14-Pin PDIP/SOIC  
Top View**



**Figure 2. Input Bias Current  
vs Temperature**



These devices have limited built-in ESD protection. The leads should be shorted together or the device placed in conductive foam during storage or handling to prevent electrostatic damage to the MOS gates.



Please be aware that an important notice concerning availability, standard warranty, and use in critical applications of Texas Instruments semiconductor products and disclaimers thereto appears at the end of this data sheet.

All trademarks are the property of their respective owners.

PRODUCTION DATA information is current as of publication date. Products conform to specifications per the terms of the Texas Instruments standard warranty. Production processing does not necessarily include testing of all parameters.

Copyright © 2000–2013, Texas Instruments Incorporated

**Absolute Maximum Ratings<sup>(1)(2)</sup>**

|   |  |
|---|--|
| Differential Input Voltage                        | ±Supply Voltage                                  |
| Voltage at Input/Output Pin                       | (V <sup>+</sup> ) +0.3V, (V <sup>-</sup> ) -0.3V |
| Supply Voltage (V <sup>+</sup> - V <sup>-</sup> ) | 16V  |
| Output Short Circuit to V <sup>+</sup>            | See <sup>(3)</sup>                               |
| Output Short Circuit to V <sup>-</sup>            | See <sup>(4)</sup>                               |
| Lead Temperature (Soldering, 10 Sec.)             | 260°C  |
| Storage Temp. Range                               | -65°C to +150°C                                  |
| Junction Temperature                              | 150°C  |
| ESD Tolerance <sup>(5)</sup>                      | 2 kV   |
| Current at Input Pin                              | ±10 mA   |
| Current at Output Pin                             | ±30 mA   |
| Current at Power Supply Pin                       | 40 mA  |
| Power Dissipation                                 | See <sup>(6)</sup>                               |

- (1) Absolute Maximum Ratings indicate limits beyond which damage to the device may occur. Operating Ratings indicate conditions for which the device is intended to be functional, but do not guarantee specific performance limits. For guaranteed specifications and test conditions, see the Electrical Characteristics. The guaranteed specifications apply only for the test conditions listed.
- (2) If Military/Aerospace specified devices are required, please contact the TI Sales Office/ Distributors for availability and specifications.
- (3) Do not connect output to V<sup>+</sup>, when V<sup>+</sup> is greater than 13V or reliability will be adversely affected.
- (4) Applies to both single-supply and split-supply operation. Continuous short circuit operation at elevated ambient temperature can result in exceeding the maximum allowed junction temperature of 150°C. Output currents in excess of ±30 mA over long term may adversely affect reliability.
- (5) Human body model, 1.5 kΩ in series with 100 pF.
- (6) The maximum power dissipation is a function of T<sub>J(Max)</sub>, θ<sub>JA</sub>, and T<sub>A</sub>. The maximum allowable power dissipation at any ambient temperature is P<sub>D</sub> = (T<sub>J(Max)</sub> - T<sub>A</sub>) / θ<sub>JA</sub>.

**Operating Ratings<sup>(1)</sup>**

|  |                     |                                 |
|--|---------------------|---------------------------------|
| Temperature Range                                    | LMC6084AM           | -55°C ≤ T <sub>J</sub> ≤ +125°C |
|  | LMC6084AI, LMC6084I | -40°C ≤ T <sub>J</sub> ≤ +85°C  |
| Supply Voltage                                       |                     | 4.5V ≤ V <sup>+</sup> ≤ 15.5V   |
| Thermal Resistance (θ <sub>JA</sub> ) <sup>(2)</sup> | 14-Pin PDIP         | 81°C/W                          |
|  | 14-Pin SOIC         | 126°C/W                         |
| Power Dissipation                                    |                     | See <sup>(3)</sup>              |

- (1) Absolute Maximum Ratings indicate limits beyond which damage to the device may occur. Operating Ratings indicate conditions for which the device is intended to be functional, but do not guarantee specific performance limits. For guaranteed specifications and test conditions, see the Electrical Characteristics. The guaranteed specifications apply only for the test conditions listed.
- (2) All numbers apply for packages soldered directly into a PC board.
- (3) For operating at elevated temperatures the device must be derated based on the thermal resistance θ<sub>JA</sub> with P<sub>D</sub> = (T<sub>J</sub> - T<sub>A</sub>) / θ<sub>JA</sub>. All numbers apply for packages soldered directly into a PC board.

**DC Electrical Characteristics**

Unless otherwise specified, all limits guaranteed for T<sub>J</sub> = 25°C. **Boldface** limits apply at the temperature extremes. V<sup>+</sup> = 5V, V<sup>-</sup> = 0V, V<sub>CM</sub> = 1.5V, V<sub>O</sub> = 2.5V and R<sub>L</sub> > 1M unless otherwise specified.

| Symbol            | Parameter                             | Conditions | Typ <sup>(1)</sup> | LMC6084AM<br>Limit <sup>(2)</sup> | LMC6084AI<br>Limit <sup>(2)</sup> | LMC6084I<br>Limit <sup>(2)</sup> | Units     |
|-------------------|---------------------------------------|------------|--------------------|-----------------------------------|-----------------------------------|----------------------------------|-----------|
| V <sub>OS</sub>   | Input Offset Voltage                  |            | 150                | 350<br><b>1000</b>                | 350<br><b>800</b>                 | 800<br><b>1300</b>               | μV<br>Max |
| TCV <sub>OS</sub> | Input Offset Voltage<br>Average Drift |            | 1.0                |                                   |                                   |                                  | μV/°C     |
| I <sub>B</sub>    | Input Bias Current                    |            | 0.010              | <b>100</b>                        | <b>4</b>                          | <b>4</b>                         | pA<br>Max |
| I <sub>OS</sub>   | Input Offset Current                  |            | 0.005              | <b>100</b>                        | <b>2</b>                          | <b>2</b>                         | pA<br>Max |

- (1) Typical values represent the most likely parametric norm.
- (2) All limits are guaranteed by testing or statistical analysis.

## DC Electrical Characteristics (continued)

Unless otherwise specified, all limits guaranteed for  $T_J = 25^\circ\text{C}$ . **Boldface** limits apply at the temperature extremes.  $V^+ = 5\text{V}$ ,  $V^- = 0\text{V}$ ,  $V_{\text{CM}} = 1.5\text{V}$ ,  $V_O = 2.5\text{V}$  and  $R_L > 1\text{M}$  unless otherwise specified.

| Symbol  | Parameter                              | Conditions                                      |                     | Typ <sup>(1)</sup>                                   | LMC6084AM<br>Limit <sup>(2)</sup>                  | LMC6084AI<br>Limit <sup>(2)</sup>                  | LMC6084I<br>Limit <sup>(2)</sup>                   | Units               |                     |          |
|---|--|---|---------------------|--|--|--|--|---------------------|---------------------|----------|
| R <sub>IN</sub>                                       | Input Resistance                       |   |                     | >10  |  |  |  | Tera Ω              |                     |          |
| CMRR  | Common Mode                            | 0V ≤ V <sub>CM</sub> ≤ 12.0V                    |                     | 85   | 75   | 75   | 66   | dB                  |                     |          |
|   | Rejection Ratio                        | V <sup>+</sup> = 15V                            |                     |  | <b>72</b>  | <b>72</b>  | <b>63</b>  | Min                 |                     |          |
| +PSRR   | Positive Power Supply                  | 5V ≤ V <sup>+</sup> ≤ 15V                       |                     | 85   | 75   | 75   | 66   | dB                  |                     |          |
|   | Rejection Ratio                        | V <sub>O</sub> = 2.5V                           |                     |  | <b>72</b>  | <b>72</b>  | <b>63</b>  | Min                 |                     |          |
| −PSRR   | Negative Power Supply                  | 0V ≤ V <sup>−</sup> ≤ −10V                      |                     | 94   | 84   | 84   | 74   | dB                  |                     |          |
|   | Rejection Ratio                        |   |                     |  | <b>81</b>  | <b>81</b>  | <b>71</b>  | Min                 |                     |          |
| V <sub>CM</sub>                                       | Input Common-Mode<br>Voltage Range     | V <sup>+</sup> = 5V and 15V<br>for CMRR ≥ 60 dB |                     | −0.4   | −0.1   | −0.1   | −0.1   | V                   |                     |          |
|   |  |   |                     |  | <b>0</b>   | <b>0</b>   | <b>0</b>   | Max                 |                     |          |
|   |  |   |                     | V <sup>+</sup> − 1.9                                 | V <sup>+</sup> − 2.3<br><b>V<sup>+</sup> − 2.6</b> | V <sup>+</sup> − 2.3<br><b>V<sup>+</sup> − 2.5</b> | V <sup>+</sup> − 2.3<br><b>V<sup>+</sup> − 2.5</b> | V<br>Min            |                     |          |
| A <sub>V</sub>  | Large Signal<br>Voltage Gain           | R <sub>L</sub> = 2 kΩ <sup>(3)</sup>            | Sourcing            | 1400   | 400<br><b>300</b>                                  | 400<br><b>300</b>                                  | 300<br><b>200</b>                                  | V/mV<br>Min         |                     |          |
|   |  |   | Sinking             | 350  | 180<br><b>70</b>                                   | 180<br><b>100</b>                                  | 90<br><b>60</b>                                    | V/mV<br>Min         |                     |          |
|   |  | R <sub>L</sub> = 600Ω <sup>(3)</sup>            | Sourcing            | 1200   | 400<br><b>150</b>                                  | 400<br><b>150</b>                                  | 200<br><b>80</b>                                   | V/mV<br>Min         |                     |          |
|   |  |   | Sinking             | 150  | 100<br><b>35</b>                                   | 100<br><b>50</b>                                   | 70<br><b>35</b>                                    | V/mV<br>Min         |                     |          |
|   |  | V <sub>O</sub>                                  | Output Swing        | V <sup>+</sup> = 5V<br>R <sub>L</sub> = 2 kΩ to 2.5V |  | 4.87   | 4.80<br><b>4.70</b>                                | 4.80<br><b>4.73</b> | 4.75<br><b>4.67</b> | V<br>Min |
|   |  |   |                     |  |  | 0.10   | 0.13<br><b>0.19</b>                                | 0.13<br><b>0.17</b> | 0.20<br><b>0.24</b> | V<br>Max |
|   |  |   |                     |  |  |  |  |                     |                     |          |
| V <sup>+</sup> = 5V<br>R <sub>L</sub> = 600Ω to 2.5V  |  |   |                     | 4.61   | 4.50<br><b>4.24</b>                                | 4.50<br><b>4.31</b>                                | 4.40<br><b>4.21</b>                                | V<br>Min            |                     |          |
|   |  |   |                     | 0.30   | 0.40<br><b>0.63</b>                                | 0.40<br><b>0.50</b>                                | 0.50<br><b>0.63</b>                                | V<br>Max            |                     |          |
|   |  |   |                     |  |  |  |  |                     |                     |          |
| V <sup>+</sup> = 15V<br>R <sub>L</sub> = 2 kΩ to 7.5V |  |   |                     | 14.63  | 14.50<br><b>14.30</b>                              | 14.50<br><b>14.34</b>                              | 14.37<br><b>14.25</b>                              | V<br>Min            |                     |          |
|   |  |   |                     | 0.26   | 0.35<br><b>0.48</b>                                | 0.35<br><b>0.45</b>                                | 0.44<br><b>0.56</b>                                | V<br>Max            |                     |          |
|   |  |   |                     |  |  |  |  |                     |                     |          |
| V <sup>+</sup> = 15V<br>R <sub>L</sub> = 600Ω to 7.5V |  |   |                     | 13.90  | 13.35<br><b>12.80</b>                              | 13.35<br><b>12.86</b>                              | 12.92<br><b>12.44</b>                              | V<br>Min            |                     |          |
|   |  | 0.79  | 1.16<br><b>1.42</b> | 1.16<br><b>1.32</b>                                  | 1.33<br><b>1.58</b>                                | V<br>Max   |  |                     |                     |          |
| I <sub>O</sub>  | Output Current<br>V <sup>+</sup> = 5V  | Sourcing, V <sub>O</sub> = 0V                   | 22                  | 16<br><b>8</b>                                       | 16<br><b>10</b>                                    | 13<br><b>8</b>                                     | mA<br>Min  |                     |                     |          |
|   |  | Sinking, V <sub>O</sub> = 5V                    | 21                  | 16<br><b>11</b>                                      | 16<br><b>13</b>                                    | 13<br><b>10</b>                                    | mA<br>Min  |                     |                     |          |
| I <sub>O</sub>  | Output Current<br>V <sup>+</sup> = 15V | Sourcing, V <sub>O</sub> = 0V                   | 30                  | 28<br><b>18</b>                                      | 28<br><b>22</b>                                    | 23<br><b>18</b>                                    | mA<br>Min  |                     |                     |          |
|   |  | Sinking, V <sub>O</sub> = 13V <sup>(4)</sup>    | 34                  | 28<br><b>19</b>                                      | 28<br><b>22</b>                                    | 23<br><b>18</b>                                    | mA<br>Min  |                     |                     |          |

(3)  $V^+ = 15\text{V}$ ,  $V_{\text{CM}} = 7.5\text{V}$  and  $R_L$  connected to  $7.5\text{V}$ . For Sourcing tests,  $7.5\text{V} \leq V_O \leq 11.5\text{V}$ . For Sinking tests,  $2.5\text{V} \leq V_O \leq 7.5\text{V}$ .

(4) Do not connect output to  $V^+$ , when  $V^+$  is greater than  $13\text{V}$  or reliability will be adversely affected.

## DC Electrical Characteristics (continued)

Unless otherwise specified, all limits guaranteed for  $T_J = 25^\circ\text{C}$ . **Boldface** limits apply at the temperature extremes.  $V^+ = 5\text{V}$ ,  $V^- = 0\text{V}$ ,  $V_{\text{CM}} = 1.5\text{V}$ ,  $V_O = 2.5\text{V}$  and  $R_L > 1\text{M}$  unless otherwise specified.

| Symbol | Parameter      | Conditions                                | Typ <sup>(1)</sup> | LMC6084AM<br>Limit <sup>(2)</sup> | LMC6084AI<br>Limit <sup>(2)</sup> | LMC6084I<br>Limit <sup>(2)</sup> | Units |
|--------|----------------|---|--------------------|-----------------------------------|-----------------------------------|----------------------------------|-------|
| $I_S$  | Supply Current | All Four Amplifiers                       | 1.8                | 3.0                               | 3.0                               | 3.0                              | mA    |
|        |                | $V^+ = +5\text{V}$ , $V_O = 1.5\text{V}$  |                    | <b>3.6</b>                        | <b>3.6</b>                        | <b>3.6</b>                       | Max   |
|        |                | All Four Amplifiers                       | 2.2                | 3.4                               | 3.4                               | 3.4                              | mA    |
|        |                | $V^+ = +15\text{V}$ , $V_O = 7.5\text{V}$ |                    | <b>4.0</b>                        | <b>4.0</b>                        | <b>4.0</b>                       | Max   |

## AC Electrical Characteristics

Unless otherwise specified, all limits guaranteed for  $T_J = 25^\circ\text{C}$ . **Boldface** limits apply at the temperature extremes.  $V^+ = 5\text{V}$ ,  $V^- = 0\text{V}$ ,  $V_{\text{CM}} = 1.5\text{V}$ ,  $V_O = 2.5\text{V}$  and  $R_L > 1\text{M}$  unless otherwise specified.

| Symbol   | Parameter                    | Conditions   | Typ <sup>(1)</sup> | LMC6084AM<br>Limit <sup>(2)</sup> | LMC6084AI<br>Limit <sup>(2)</sup> | LMC6084I<br>Limit <sup>(2)</sup> | Units                   |
|----------|------------------------------|--|--------------------|-----------------------------------|-----------------------------------|----------------------------------|-------------------------|
| SR       | Slew Rate                    | See <sup>(3)</sup>   | 1.5                | 0.8<br><b>0.5</b>                 | 0.8<br><b>0.6</b>                 | 0.8<br><b>0.6</b>                | V/ $\mu\text{s}$<br>Min |
| GBW      | Gain-Bandwidth Product       |  | 1.3                |                                   |                                   |                                  | MHz                     |
| $\phi_m$ | Phase Margin                 |  | 50                 |                                   |                                   |                                  | Deg                     |
|          | Amp-to-Amp Isolation         | See <sup>(4)</sup>   | 140                |                                   |                                   |                                  | dB                      |
| $e_n$    | Input-Referred Voltage Noise | $F = 1\text{ kHz}$   | 22                 |                                   |                                   |                                  | nV/ $\sqrt{\text{Hz}}$  |
| $i_n$    | Input-Referred Current Noise | $F = 1\text{ kHz}$   | 0.0002             |                                   |                                   |                                  | pA/ $\sqrt{\text{Hz}}$  |
| T.H.D.   | Total Harmonic Distortion    | $F = 10\text{ kHz}$ , $A_V = -10$<br>$R_L = 2\text{ k}\Omega$ , $V_O = 8\text{ V}_{\text{PP}}$<br>$\pm 5\text{V}$ Supply | 0.01               |                                   |                                   |                                  | %                       |

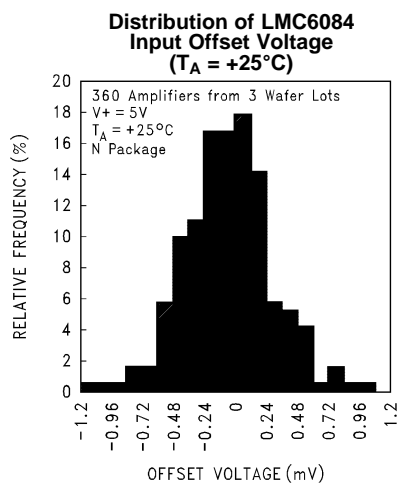
(1) Typical values represent the most likely parametric norm.

(2) All limits are guaranteed by testing or statistical analysis.

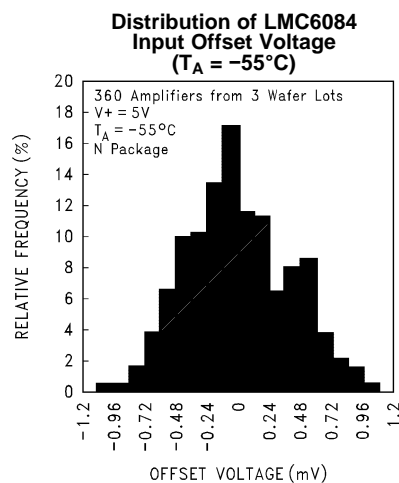
(3)  $V^+ = 15\text{V}$ . Connected as Voltage Follower with 10V step input. Number specified is the slower of the positive and negative slew rates.

(4) Input referred  $V^+ = 15\text{V}$  and  $R_L = 100\text{ k}\Omega$  connected to 7.5V. Each amp excited in turn with 1 kHz to produce  $V_O = 12\text{ V}_{\text{PP}}$ .

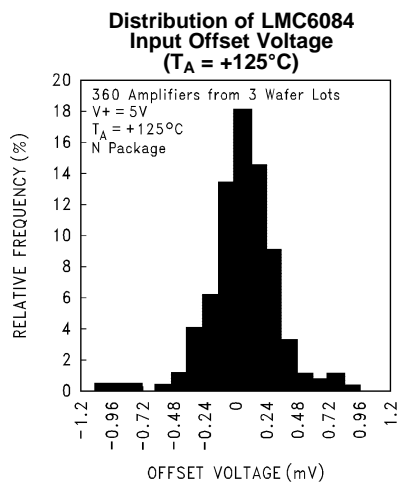
## Typical Performance Characteristics



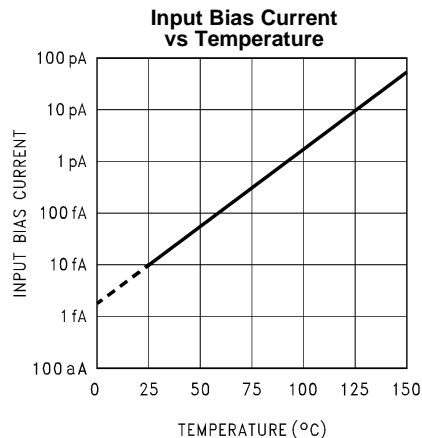
**Figure 3.**



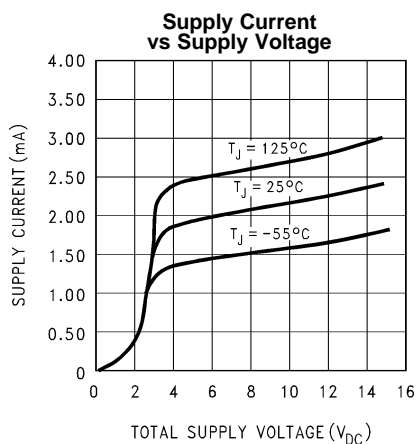
**Figure 4.**



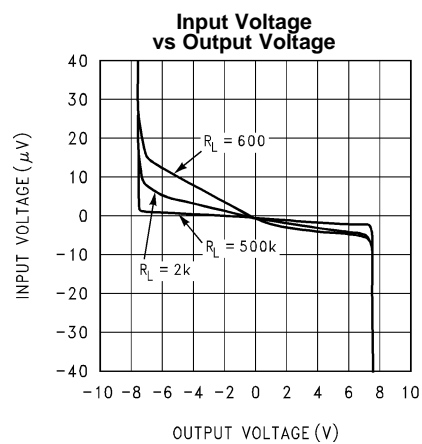
**Figure 5.**



**Figure 6.**



**Figure 7.**



**Figure 8.**

## Typical Performance Characteristics (continued)

**Common Mode  
Rejection Ratio  
vs Frequency**

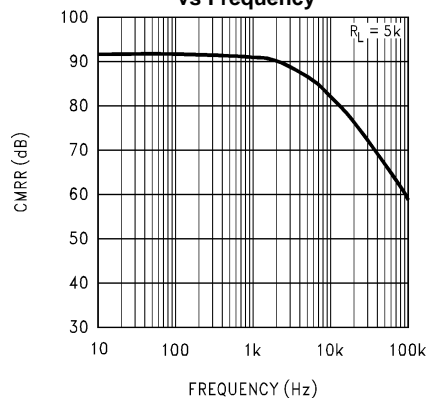


Figure 9.

**Power Supply Rejection Ratio  
vs Frequency**

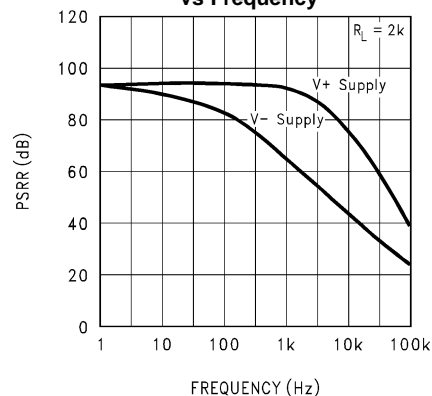


Figure 10.

**Input Voltage Noise  
vs Frequency**

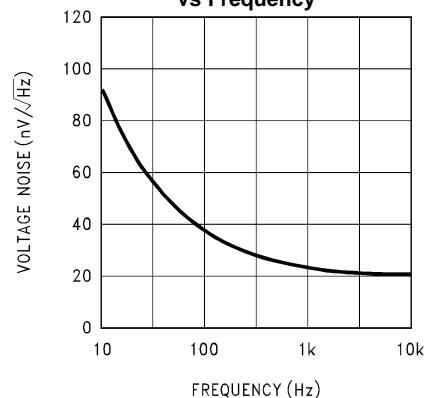


Figure 11.

**Output Characteristics  
Sourcing Current**

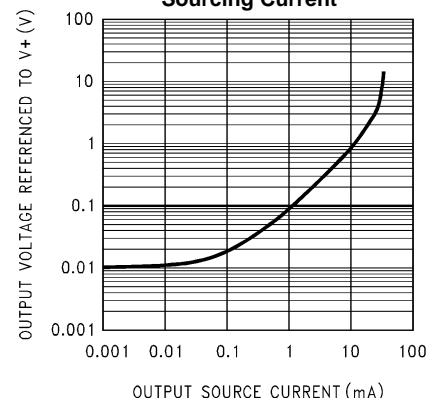


Figure 12.

**Output Characteristics  
Sinking Current**

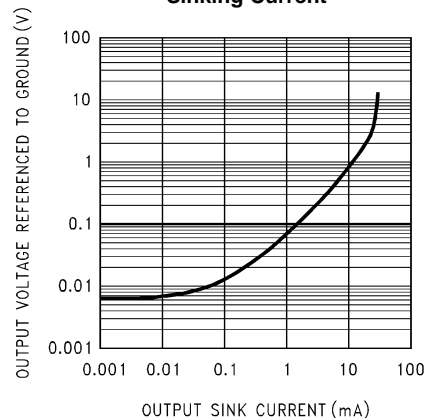


Figure 13.

**Gain and Phase Response  
vs Temperature (-55°C to +125°C)**

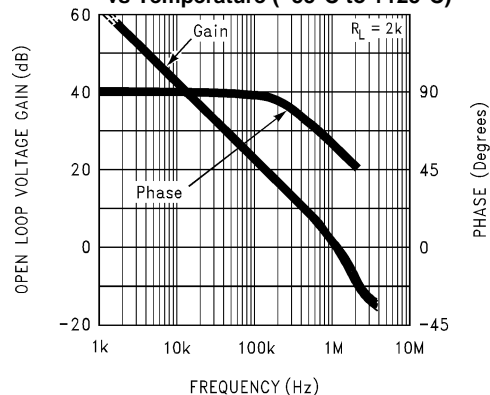


Figure 14.

## Typical Performance Characteristics (continued)

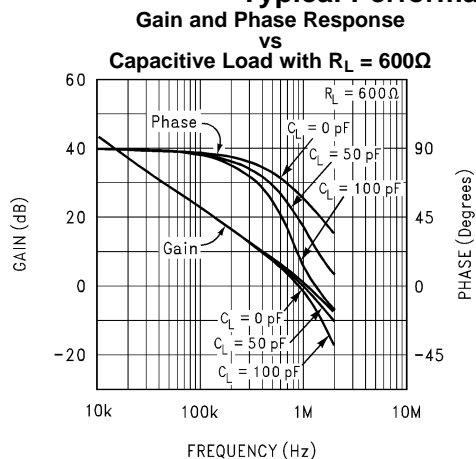


Figure 15.

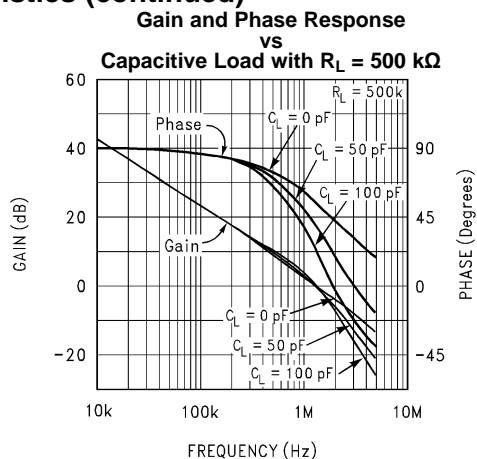


Figure 16.

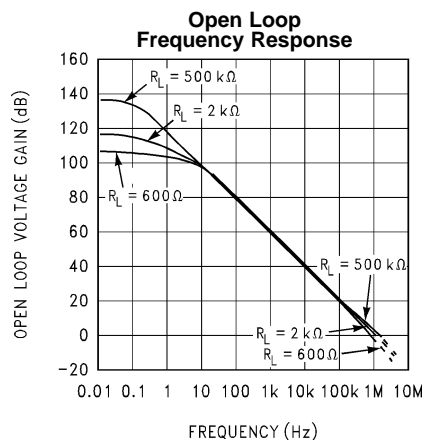


Figure 17.

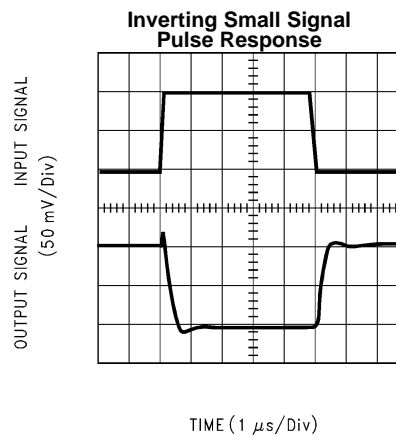


Figure 18.

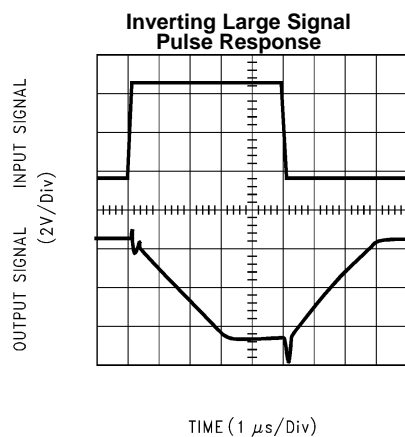


Figure 19.

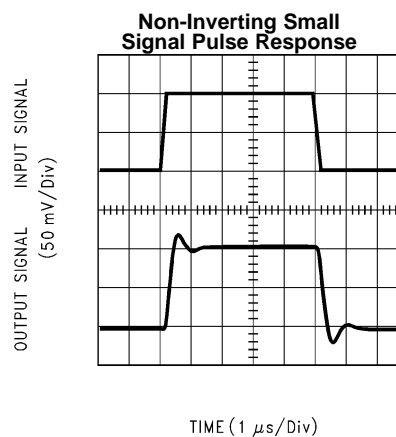


Figure 20.

## Typical Performance Characteristics (continued)

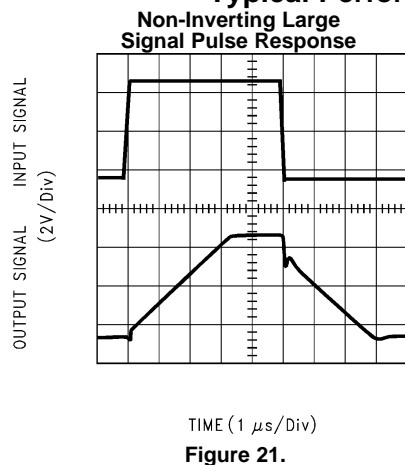


Figure 21.

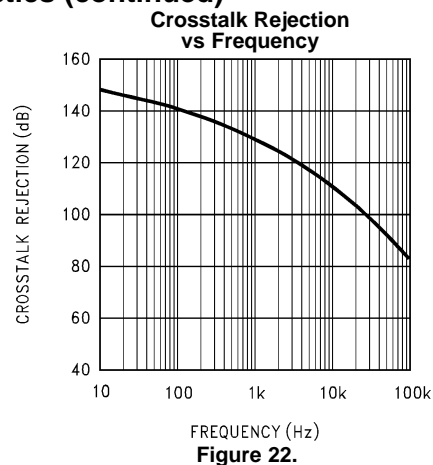


Figure 22.

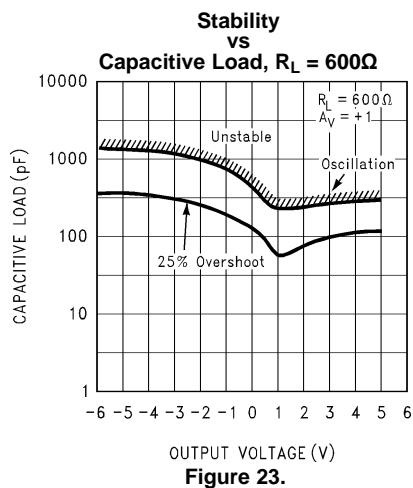


Figure 23.

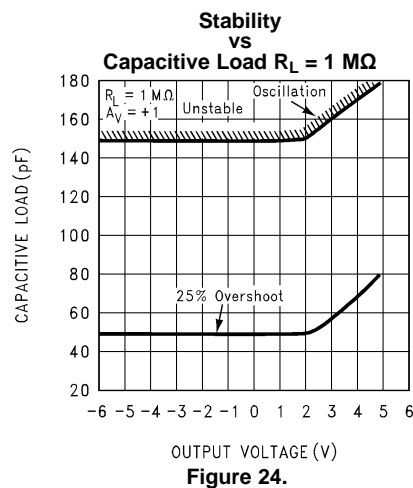


Figure 24.



## APPLICATIONS HINTS

### AMPLIFIER TOPOLOGY

The LMC6084 incorporates a novel op-amp design topology that enables it to maintain rail-to-rail output swing even when driving a large load. Instead of relying on a push-pull unity gain output buffer stage, the output stage is taken directly from the internal integrator, which provides both low output impedance and large gain. Special feed-forward compensation design techniques are incorporated to maintain stability over a wider range of operating conditions than traditional micropower op-amps. These features make the LMC6084 both easier to design with, and provide higher speed than products typically found in this ultra-low power class.

### COMPENSATING FOR INPUT CAPACITANCE

It is quite common to use large values of feedback resistance for amplifiers with ultra-low input current, like the LMC6084.

Although the LMC6084 is highly stable over a wide range of operating conditions, certain precautions must be met to achieve the desired pulse response when a large feedback resistor is used. Large feedback resistors and even small values of input capacitance, due to transducers, photodiodes, and circuit board parasitics, reduce phase margins.

When high input impedances are demanded, guarding of the LMC6084 is suggested. Guarding input lines will not only reduce leakage, but lowers stray input capacitance as well. (See [Printed-Circuit-Board Layout for High Impedance Work](#))

The effect of input capacitance can be compensated for by adding a capacitor,  $C_f$ , around the feedback resistors (as in [Figure 25](#)) such that:

$$\frac{1}{2\pi R_1 C_{IN}} \geq \frac{1}{2\pi R_2 C_f} \quad (1)$$

$$\text{or} \quad (2)$$

$$R_1 C_{IN} \leq R_2 C_f \quad (3)$$

Since it is often difficult to know the exact value of  $C_{IN}$ ,  $C_f$  can be experimentally adjusted so that the desired pulse response is achieved. Refer to the LMC660 and LMC662 for a more detailed discussion on compensating for input capacitance.

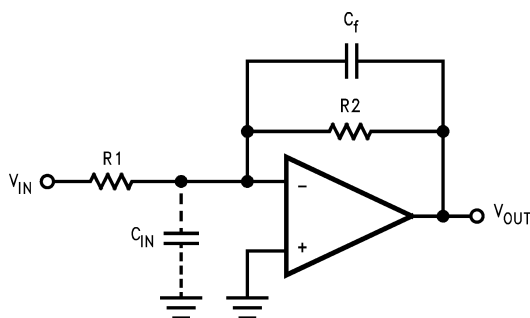
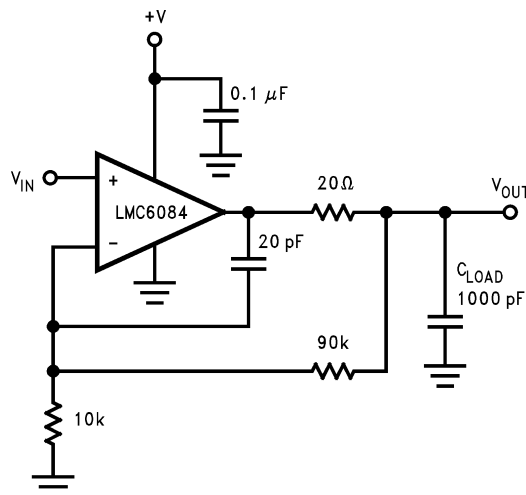


Figure 25. Cancelling the Effect of Input Capacitance

### CAPACITIVE LOAD TOLERANCE

All rail-to-rail output swing operational amplifiers have voltage gain in the output stage. A compensation capacitor is normally included in this integrator stage. The frequency location of the dominant pole is affected by the resistive load on the amplifier. Capacitive load driving capability can be optimized by using an appropriate resistive load in parallel with the capacitive load (see [typical curves](#)).

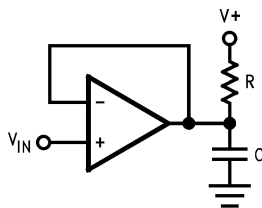
Direct capacitive loading will reduce the phase margin of many op-amps. A pole in the feedback loop is created by the combination of the op-amp's output impedance and the capacitive load. This pole induces phase lag at the unity-gain crossover frequency of the amplifier resulting in either an oscillatory or underdamped pulse response. With a few external components, op amps can easily indirectly drive capacitive loads, as shown in [Figure 26](#).



**Figure 26. LMC6084 Noninverting Gain of 10 Amplifier, Compensated to Handle Capacitive Loads**

In the circuit of [Figure 26](#), R1 and C1 serve to counteract the loss of phase margin by feeding the high frequency component of the output signal back to the amplifier's inverting input, thereby preserving phase margin in the overall feedback loop.

Capacitive load driving capability is enhanced by using a pull up resistor to  $V^+$  [Figure 27](#). Typically a pull up resistor conducting 500  $\mu$ A or more will significantly improve capacitive load responses. The value of the pull up resistor must be determined based on the current sinking capability of the amplifier with respect to the desired output swing. Open loop gain of the amplifier can also be affected by the pull up resistor (see [Electrical Characteristics](#)).



**Figure 27. Compensating for Large Capacitive Loads with a Pull Up Resistor**

## PRINTED-CIRCUIT-BOARD LAYOUT FOR HIGH-IMPEDANCE WORK

It is generally recognized that any circuit which must operate with less than 1000 pA of leakage current requires special layout of the PC board. When one wishes to take advantage of the ultra-low bias current of the LMC6084, typically less than 10 fA, it is essential to have an excellent layout. Fortunately, the techniques of obtaining low leakages are quite simple. First, the user must not ignore the surface leakage of the PC board, even though it may sometimes appear acceptably low, because under conditions of high humidity or dust or contamination, the surface leakage will be appreciable.

To minimize the effect of any surface leakage, lay out a ring of foil completely surrounding the LMC6084's inputs and the terminals of capacitors, diodes, conductors, resistors, relay terminals, etc. connected to the op-amp's inputs, as in [Figure 28](#). To have a significant effect, guard rings should be placed on both the top and bottom of the PC board. This PC foil must then be connected to a voltage which is at the same voltage as the amplifier inputs, since no leakage current can flow between two points at the same potential. For example, a PC board trace-to-pad resistance of  $10^{12}\Omega$ , which is normally considered a very large resistance, could leak 5 pA if the trace were a 5V bus adjacent to the pad of the input. This would cause a 100 times degradation from the LMC6084's actual performance. However, if a guard ring is held within 5 mV of the inputs, then even a resistance of  $10^{11}\Omega$  would cause only 0.05 pA of leakage current. See [Figure 29](#) for typical connections of guard rings for standard op-amp configurations.

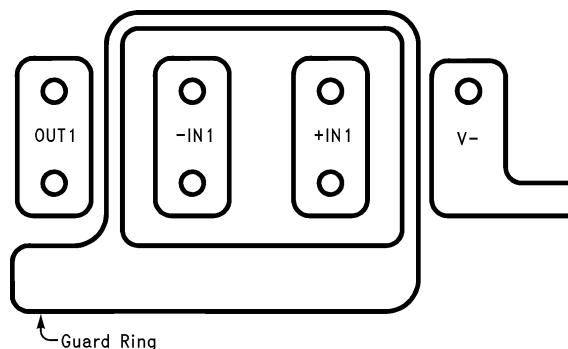


Figure 28. Example of Guard Ring in P.C. Board Layout

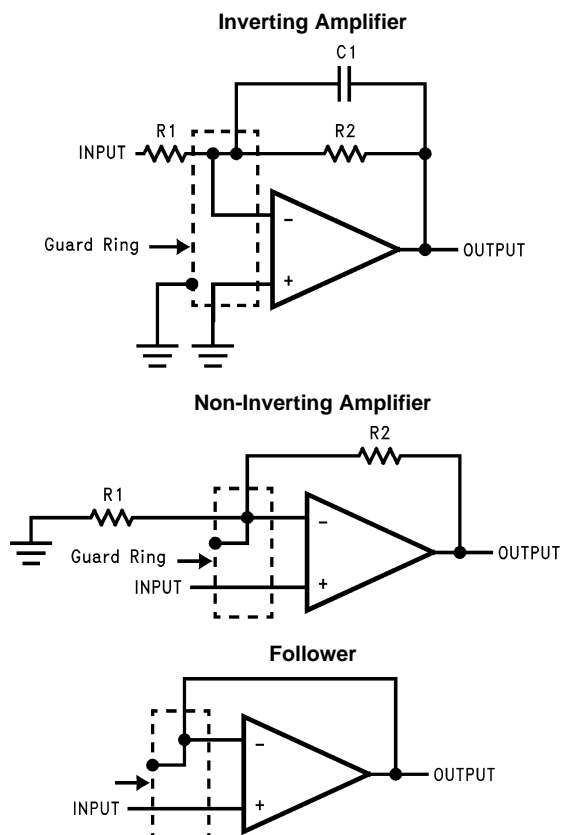
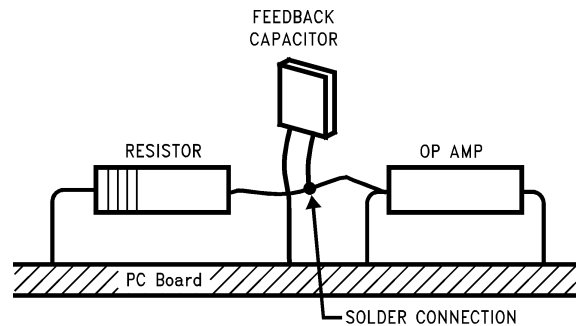


Figure 29. Typical Connections of Guard Rings

The designer should be aware that when it is inappropriate to lay out a PC board for the sake of just a few circuits, there is another technique which is even better than a guard ring on a PC board: Don't insert the amplifier's input pin into the board at all, but bend it up in the air and use only air as an insulator. Air is an excellent insulator. In this case you may have to forego some of the advantages of PC board construction, but the advantages are sometimes well worth the effort of using point-to-point up-in-the-air wiring. See [Figure 30](#).

## Latchup

CMOS devices tend to be susceptible to latchup due to their internal parasitic SCR effects. The (I/O) input and output pins look similar to the gate of the SCR. There is a minimum current required to trigger the SCR gate lead. The LMC6084 is designed to withstand 100 mA surge current on the I/O pins. Some resistive method should be used to isolate any capacitance from supplying excess current to the I/O pins. In addition, like an SCR, there is a minimum holding current for any latchup mode. Limiting current to the supply pins will also inhibit latchup susceptibility.



(Input pins are lifted out of PC board and soldered directly to components. All other pins connected to PC board).

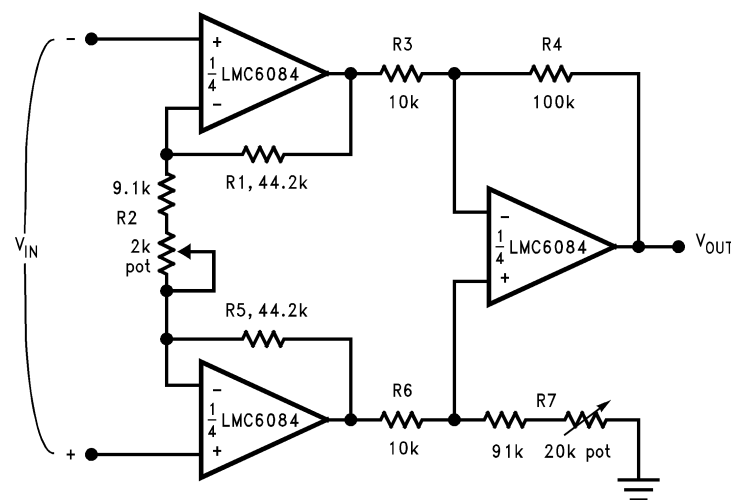
**Figure 30. Air Wiring**

## Typical Single-Supply Applications

( $V^+ = 5.0 V_{DC}$ )

The extremely high input impedance, and low power consumption, of the LMC6084 make it ideal for applications that require battery-powered instrumentation amplifiers. Examples of these types of applications are hand-held pH probes, analytic medical instruments, magnetic field detectors, gas detectors, and silicon based pressure transducers.

Figure 31 shows an instrumentation amplifier that features high differential and common mode input resistance ( $>10^{14}\Omega$ ), 0.01% gain accuracy at  $A_V = 1000$ , excellent CMRR with 1 k $\Omega$  imbalance in bridge source resistance. Input current is less than 100 fA and offset drift is less than 2.5  $\mu V/^{\circ}C$ .  $R_2$  provides a simple means of adjusting gain over a wide range without degrading CMRR.  $R_7$  is an initial trim used to maximize CMRR without using super precision matched resistors. For good CMRR over temperature, low drift resistors should be used.

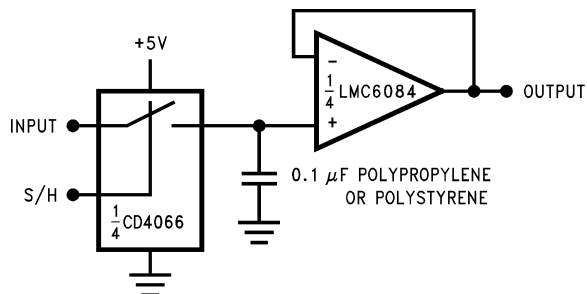


If  $R_1 = R_5$ ,  $R_3 = R_6$ , and  $R_4 = R_7$ ; then

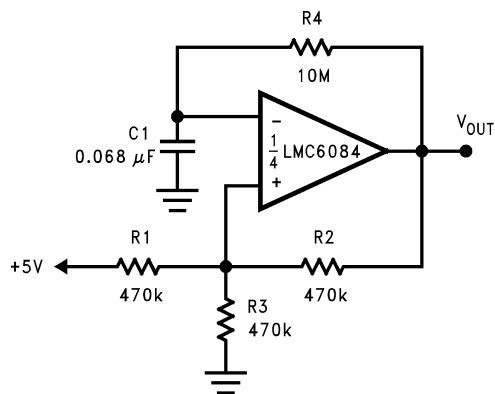
$$\frac{V_{OUT}}{V_{IN}} = \frac{R_2 + 2R_1}{R_2} \times \frac{R_4}{R_3}$$

$\therefore A_V \approx 100$  for circuit shown ( $R_2 = 9.822k$ ).

**Figure 31. Instrumentation Amplifier**



**Figure 32. Low-Leakage Sample and Hold**



**Figure 33. 1 Hz Square Wave Oscillator**

REVISION HISTORY

| Changes from Revision C (March 2013) to Revision D         | Page               |
|--|--------------------|
| • Changed layout of National Data Sheet to TI format ..... | <a href="#">13</a> |

## PACKAGING INFORMATION

| Orderable Device | Status<br>(1) | Package Type | Package<br>Drawing | Pins | Package<br>Qty | Eco Plan<br>(2)            | Lead/Ball Finish<br>(6) | MSL Peak Temp<br>(3) | Op Temp (°C) | Device Marking<br>(4/5) | Samples                 |
|------------------|---------------|--------------|--------------------|------|----------------|----------------------------|-------------------------|----------------------|--------------|-------------------------|-------------------------|
| LMC6084AIM       | NRND          | SOIC         | D                  | 14   | 55             | TBD                        | Call TI                 | Call TI              | -40 to 85    | LMC6084<br>AIM          |                         |
| LMC6084AIM/NOPB  | ACTIVE        | SOIC         | D                  | 14   | 55             | Green (RoHS<br>& no Sb/Br) | CU SN                   | Level-1-260C-UNLIM   | -40 to 85    | LMC6084<br>AIM          | <a href="#">Samples</a> |
| LMC6084AIMX/NOPB | ACTIVE        | SOIC         | D                  | 14   | 2500           | Green (RoHS<br>& no Sb/Br) | CU SN                   | Level-1-260C-UNLIM   | -40 to 85    | LMC6084<br>AIM          | <a href="#">Samples</a> |
| LMC6084IM/NOPB   | ACTIVE        | SOIC         | D                  | 14   | 55             | Green (RoHS<br>& no Sb/Br) | CU SN                   | Level-1-260C-UNLIM   | -40 to 85    | LMC6084IM               | <a href="#">Samples</a> |
| LMC6084IMX       | NRND          | SOIC         | D                  | 14   | 2500           | TBD                        | Call TI                 | Call TI              | -40 to 85    | LMC6084IM               |                         |
| LMC6084IMX/NOPB  | ACTIVE        | SOIC         | D                  | 14   | 2500           | Green (RoHS<br>& no Sb/Br) | CU SN                   | Level-1-260C-UNLIM   | -40 to 85    | LMC6084IM               | <a href="#">Samples</a> |

(1) The marketing status values are defined as follows:

**ACTIVE:** Product device recommended for new designs.

**LIFEBUY:** TI has announced that the device will be discontinued, and a lifetime-buy period is in effect.

**NRND:** Not recommended for new designs. Device is in production to support existing customers, but TI does not recommend using this part in a new design.

**PREVIEW:** Device has been announced but is not in production. Samples may or may not be available.

**OBSOLETE:** TI has discontinued the production of the device.

(2) Eco Plan - The planned eco-friendly classification: Pb-Free (RoHS), Pb-Free (RoHS Exempt), or Green (RoHS & no Sb/Br) - please check <http://www.ti.com/productcontent> for the latest availability information and additional product content details.

**TBD:** The Pb-Free/Green conversion plan has not been defined.

**Pb-Free (RoHS):** TI's terms "Lead-Free" or "Pb-Free" mean semiconductor products that are compatible with the current RoHS requirements for all 6 substances, including the requirement that lead not exceed 0.1% by weight in homogeneous materials. Where designed to be soldered at high temperatures, TI Pb-Free products are suitable for use in specified lead-free processes.

**Pb-Free (RoHS Exempt):** This component has a RoHS exemption for either 1) lead-based flip-chip solder bumps used between the die and package, or 2) lead-based die adhesive used between the die and leadframe. The component is otherwise considered Pb-Free (RoHS compatible) as defined above.

**Green (RoHS & no Sb/Br):** TI defines "Green" to mean Pb-Free (RoHS compatible), and free of Bromine (Br) and Antimony (Sb) based flame retardants (Br or Sb do not exceed 0.1% by weight in homogeneous material)

(3) MSL, Peak Temp. - The Moisture Sensitivity Level rating according to the JEDEC industry standard classifications, and peak solder temperature.

(4) There may be additional marking, which relates to the logo, the lot trace code information, or the environmental category on the device.

(5) Multiple Device Markings will be inside parentheses. Only one Device Marking contained in parentheses and separated by a "~" will appear on a device. If a line is indented then it is a continuation of the previous line and the two combined represent the entire Device Marking for that device.

<sup>(6)</sup> Lead/Ball Finish - Orderable Devices may have multiple material finish options. Finish options are separated by a vertical ruled line. Lead/Ball Finish values may wrap to two lines if the finish value exceeds the maximum column width.

**Important Information and Disclaimer:** The information provided on this page represents TI's knowledge and belief as of the date that it is provided. TI bases its knowledge and belief on information provided by third parties, and makes no representation or warranty as to the accuracy of such information. Efforts are underway to better integrate information from third parties. TI has taken and continues to take reasonable steps to provide representative and accurate information but may not have conducted destructive testing or chemical analysis on incoming materials and chemicals. TI and TI suppliers consider certain information to be proprietary, and thus CAS numbers and other limited information may not be available for release.

In no event shall TI's liability arising out of such information exceed the total purchase price of the TI part(s) at issue in this document sold by TI to Customer on an annual basis.



**TAPE AND REEL INFORMATION**


\*All dimensions are nominal

| Device           | Package Type | Package Drawing | Pins | SPQ  | Reel Diameter (mm) | Reel Width W1 (mm) | A0 (mm) | B0 (mm) | K0 (mm) | P1 (mm) | W (mm) | Pin1 Quadrant |
|------------------|--------------|-----------------|------|------|--------------------|--------------------|---------|---------|---------|---------|--------|---------------|
| LMC6084AIMX/NOPB | SOIC         | D               | 14   | 2500 | 330.0              | 16.4               | 6.5     | 9.35    | 2.3     | 8.0     | 16.0   | Q1            |
| LMC6084IMX       | SOIC         | D               | 14   | 2500 | 330.0              | 16.4               | 6.5     | 9.35    | 2.3     | 8.0     | 16.0   | Q1            |
| LMC6084IMX/NOPB  | SOIC         | D               | 14   | 2500 | 330.0              | 16.4               | 6.5     | 9.35    | 2.3     | 8.0     | 16.0   | Q1            |

## TAPE AND REEL BOX DIMENSIONS



\*All dimensions are nominal

| Device           | Package Type | Package Drawing | Pins | SPQ  | Length (mm) | Width (mm) | Height (mm) |
|------------------|--------------|-----------------|------|------|-------------|------------|-------------|
| LMC6084AIMX/NOPB | SOIC         | D               | 14   | 2500 | 367.0       | 367.0      | 35.0        |
| LMC6084IMX       | SOIC         | D               | 14   | 2500 | 367.0       | 367.0      | 35.0        |
| LMC6084IMX/NOPB  | SOIC         | D               | 14   | 2500 | 367.0       | 367.0      | 35.0        |

D (R-PDSO-G14)

PLASTIC SMALL OUTLINE



4040047-5/M 06/11

## IMPORTANT NOTICE

Texas Instruments Incorporated and its subsidiaries (TI) reserve the right to make corrections, enhancements, improvements and other changes to its semiconductor products and services per JESD46, latest issue, and to discontinue any product or service per JESD48, latest issue. Buyers should obtain the latest relevant information before placing orders and should verify that such information is current and complete. All semiconductor products (also referred to herein as "components") are sold subject to TI's terms and conditions of sale supplied at the time of order acknowledgment.

TI warrants performance of its components to the specifications applicable at the time of sale, in accordance with the warranty in TI's terms and conditions of sale of semiconductor products. Testing and other quality control techniques are used to the extent TI deems necessary to support this warranty. Except where mandated by applicable law, testing of all parameters of each component is not necessarily performed.

TI assumes no liability for applications assistance or the design of Buyers' products. Buyers are responsible for their products and applications using TI components. To minimize the risks associated with Buyers' products and applications, Buyers should provide adequate design and operating safeguards.

TI does not warrant or represent that any license, either express or implied, is granted under any patent right, copyright, mask work right, or other intellectual property right relating to any combination, machine, or process in which TI components or services are used. Information published by TI regarding third-party products or services does not constitute a license to use such products or services or a warranty or endorsement thereof. Use of such information may require a license from a third party under the patents or other intellectual property of the third party, or a license from TI under the patents or other intellectual property of TI.

Reproduction of significant portions of TI information in TI data books or data sheets is permissible only if reproduction is without alteration and is accompanied by all associated warranties, conditions, limitations, and notices. TI is not responsible or liable for such altered documentation. Information of third parties may be subject to additional restrictions.

Resale of TI components or services with statements different from or beyond the parameters stated by TI for that component or service voids all express and any implied warranties for the associated TI component or service and is an unfair and deceptive business practice. TI is not responsible or liable for any such statements.

Buyer acknowledges and agrees that it is solely responsible for compliance with all legal, regulatory and safety-related requirements concerning its products, and any use of TI components in its applications, notwithstanding any applications-related information or support that may be provided by TI. Buyer represents and agrees that it has all the necessary expertise to create and implement safeguards which anticipate dangerous consequences of failures, monitor failures and their consequences, lessen the likelihood of failures that might cause harm and take appropriate remedial actions. Buyer will fully indemnify TI and its representatives against any damages arising out of the use of any TI components in safety-critical applications.

In some cases, TI components may be promoted specifically to facilitate safety-related applications. With such components, TI's goal is to help enable customers to design and create their own end-product solutions that meet applicable functional safety standards and requirements. Nonetheless, such components are subject to these terms.

No TI components are authorized for use in FDA Class III (or similar life-critical medical equipment) unless authorized officers of the parties have executed a special agreement specifically governing such use.

Only those TI components which TI has specifically designated as military grade or "enhanced plastic" are designed and intended for use in military/aerospace applications or environments. Buyer acknowledges and agrees that any military or aerospace use of TI components which have **not** been so designated is solely at the Buyer's risk, and that Buyer is solely responsible for compliance with all legal and regulatory requirements in connection with such use.

TI has specifically designated certain components as meeting ISO/TS16949 requirements, mainly for automotive use. In any case of use of non-designated products, TI will not be responsible for any failure to meet ISO/TS16949.

### Products

|                              |  |
|------------------------------|--|
| Audio                        | <a href="http://www.ti.com/audio">www.ti.com/audio</a>                               |
| Amplifiers                   | <a href="http://amplifier.ti.com">amplifier.ti.com</a>                               |
| Data Converters              | <a href="http://dataconverter.ti.com">dataconverter.ti.com</a>                       |
| DLP® Products                | <a href="http://www.dlp.com">www.dlp.com</a>   |
| DSP                          | <a href="http://dsp.ti.com">dsp.ti.com</a>   |
| Clocks and Timers            | <a href="http://www.ti.com/clocks">www.ti.com/clocks</a>                             |
| Interface                    | <a href="http://interface.ti.com">interface.ti.com</a>                               |
| Logic                        | <a href="http://logic.ti.com">logic.ti.com</a>                                       |
| Power Mgmt                   | <a href="http://power.ti.com">power.ti.com</a>                                       |
| Microcontrollers             | <a href="http://microcontroller.ti.com">microcontroller.ti.com</a>                   |
| RFID                         | <a href="http://www.ti-rfid.com">www.ti-rfid.com</a>                                 |
| OMAP Applications Processors | <a href="http://www.ti.com/omap">www.ti.com/omap</a>                                 |
| Wireless Connectivity        | <a href="http://www.ti.com/wirelessconnectivity">www.ti.com/wirelessconnectivity</a> |

### Applications

|                               |  |
|-------------------------------|--|
| Automotive and Transportation | <a href="http://www.ti.com/automotive">www.ti.com/automotive</a>                         |
| Communications and Telecom    | <a href="http://www.ti.com/communications">www.ti.com/communications</a>                 |
| Computers and Peripherals     | <a href="http://www.ti.com/computers">www.ti.com/computers</a>                           |
| Consumer Electronics          | <a href="http://www.ti.com/consumer-apps">www.ti.com/consumer-apps</a>                   |
| Energy and Lighting           | <a href="http://www.ti.com/energy">www.ti.com/energy</a>                                 |
| Industrial                    | <a href="http://www.ti.com/industrial">www.ti.com/industrial</a>                         |
| Medical                       | <a href="http://www.ti.com/medical">www.ti.com/medical</a>                               |
| Security                      | <a href="http://www.ti.com/security">www.ti.com/security</a>                             |
| Space, Avionics and Defense   | <a href="http://www.ti.com/space-avionics-defense">www.ti.com/space-avionics-defense</a> |
| Video and Imaging             | <a href="http://www.ti.com/video">www.ti.com/video</a>                                   |

### TI E2E Community

[e2e.ti.com](http://e2e.ti.com)