

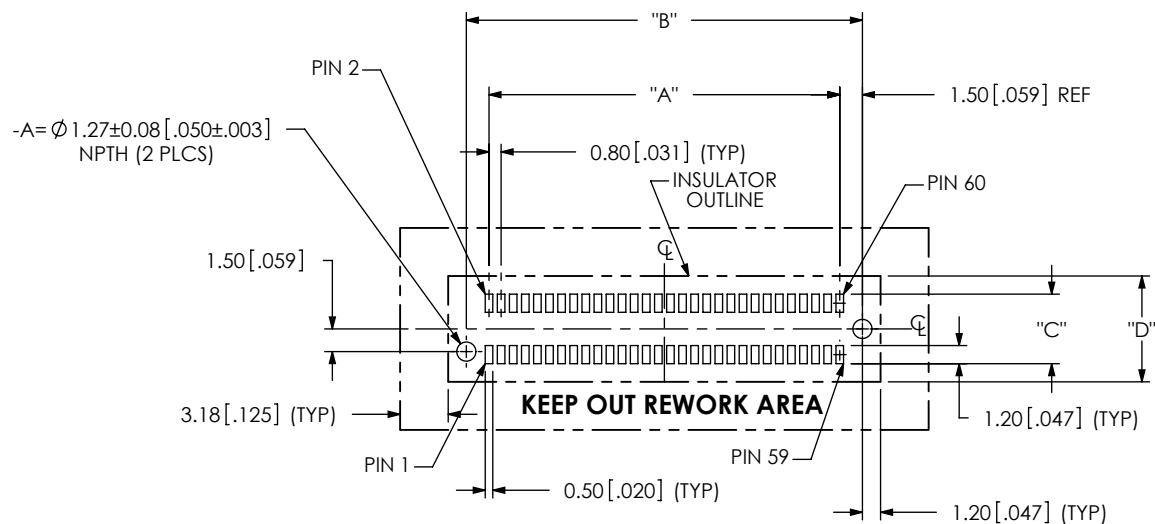
DESIGNED & DIMENSIONED
IN MILLIMETERS [ENGLISH]

FIG 1
-30 POSITION SHOWN
USE FOR -10, *-13, -20, & -30 POSITIONS WITH -A OPTION

TABLE 1		
POSITION	"A"	"B"
-10	7.20[.283]	10.20[.402]
*-13	9.60[.378]	N/A
-20	15.20[.598]	18.20[.717]
-30	23.20[.913]	26.20[1.031]

*-13 POSITION IS ONLY AVAILABLE IN THIS FOOTPRINT WITH THE -PE OPTION

TABLE 2 (SEE NOTE 1)		
MATING CARD THICKNESS TYPE	"C"	"D"
-01	4.60[.181]	7.00[.276]
-02	5.03[.198]	7.43[.293]
-03	5.39[.212]	7.79[.307]

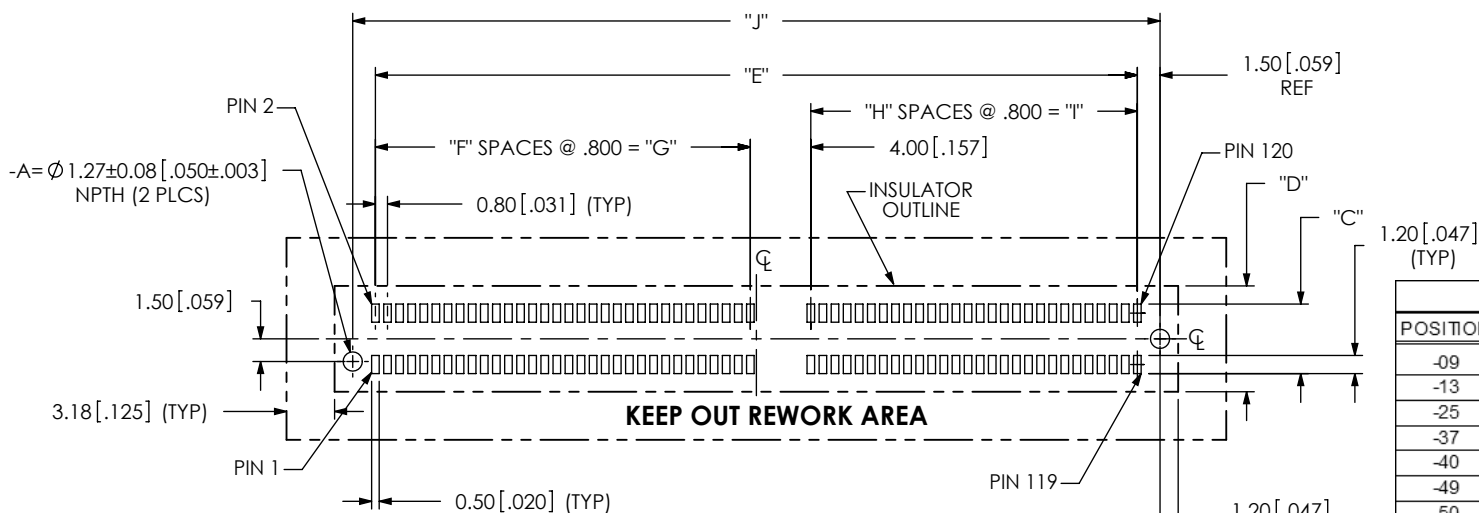


FIG 2
-60 POSITION SHOWN
USE FOR **-09, -13, -25, -37, -40, -49, -50, -60, -70, -80, -90, & -100 POSITIONS WITH -A OPTION
**-09 OPTION ONLY AVAILABLE IN -L2

TABLE 3						
POSITION	"E"	"F"	"G"	"H"	"I"	"J"
-09	9.60[.378]	3	2.40[.094]	4	3.20[.126]	
-13	12.80[.504]	5	4.00[.157]	6	4.80[.189]	15.80[.622]
-25	22.40[.882]	5	4.00[.157]	18	14.40[.567]	25.40[1.000]
-37	32.00[1.260]	20	16.00[.630]	15	12.00[.472]	35.00[1.378]
-40	34.40[1.354]	21	16.80[.661]	17	13.60[.535]	37.40[1.472]
-49	41.60[1.354]	26	20.80[.819]	21	16.80[.661]	44.60[1.756]
-50	42.40[1.669]	26	20.80[.819]	22	17.60[.693]	45.40[1.787]
-60	50.40[1.984]	31	24.80[.976]	27	21.60[.850]	53.40[2.102]
-70	58.40[2.299]	31	24.80[.976]	37	29.60[1.165]	61.40[2.471]
-80	66.40[2.614]	31	24.80[.976]	47	37.60[1.480]	69.40[2.732]
-90	74.40[2.929]	31	24.80[.976]	57	45.60[1.795]	77.40[3.047]
-100	82.40[3.244]	31	24.80[.976]	67	53.60[2.110]	85.40[3.362]

NOTE:
1. POSITIONS -09, -13, -25, -37, -49, -70, -80, -90, & -100 ONLY AVAILABLE WITH -01 CARD THICKNESS.

F:\dwg\misc\mktg\footprint\HSEC8-1XXX-XX-X-D-DV-X-FOOTPRINT.SLDDRW

TOLERANCES ARE:
DECIMALS
X: ± .3[.01]
XX: ± .10[.004]
XXX: ± .05[.0020]

ANGLES
2°

PROPRIETARY NOTE
THIS DOCUMENT CONTAINS INFORMATION
CONFIDENTIAL AND PROPRIETARY TO
SAMTEC, INC. AND SHALL NOT BE REPRODUCED
OR TRANSFERRED TO OTHER DOCUMENTS OR
DISCLOSED TO OTHERS OR USED FOR ANY
PURPOSE OTHER THAN THAT WHICH IT WAS
OBTAINED WITHOUT THE EXPRESSED WRITTEN
CONSENT OF SAMTEC, INC.

samtec

520 PARK EAST BLVD., NEW ALBANY, IN 47150
PHONE: 812-944-6733 FAX: 812-948-5047
e-Mail: info@SAMTEC.com code: 55322

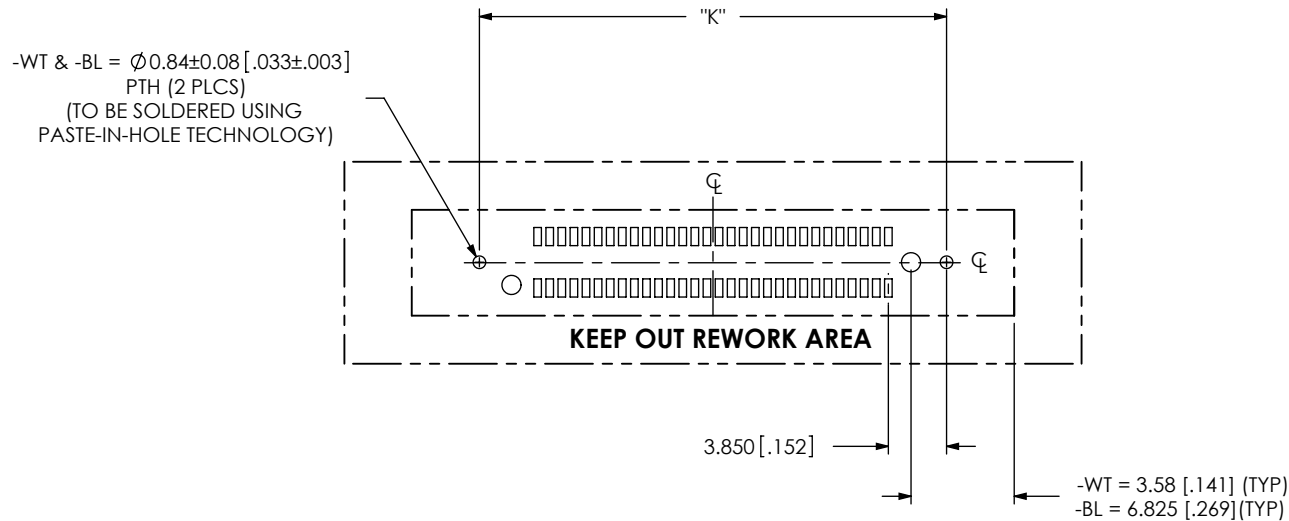


TABLE 4	
POSITION	"K"
-10	14.90 [.587]
-20	22.90 [.902]
-30	30.90 [1.220]

FIG 3
-30 POSITION SHOWN
(SAME AS FIG 1, EXCEPT AS SHOWN)
USE FOR -10, -20 OR -30 POSITIONS WITH -WT & -BL OPTION
-WT & -BL TYPE ONLY AVAILABLE WITH -01 CARD

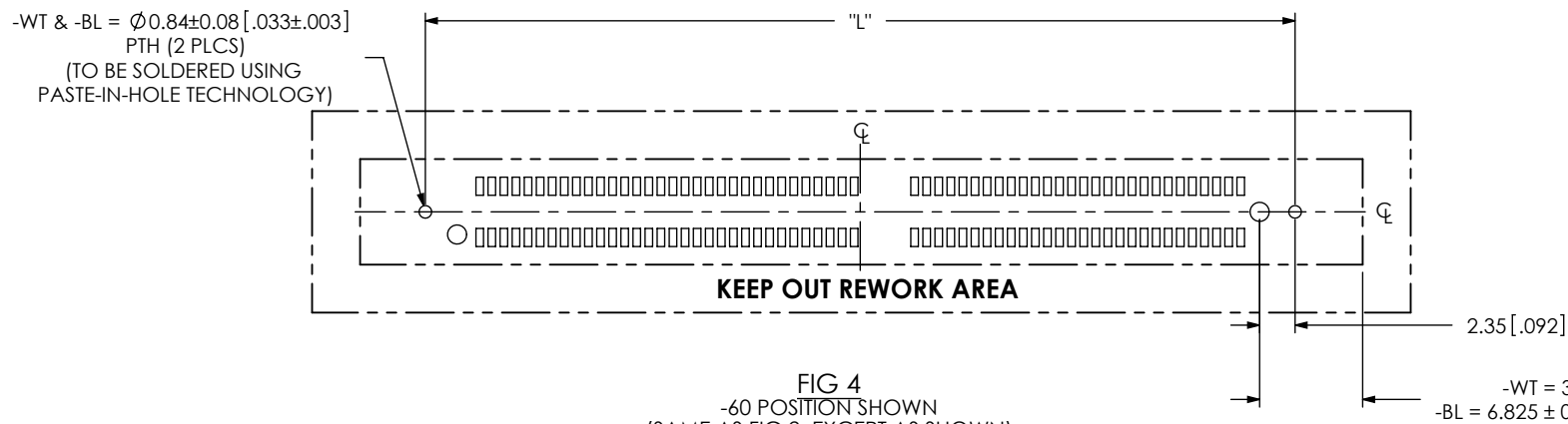


TABLE 5	
POSITION	"L"
-13	20.50 [0.807]
-25	30.10 [1.185]
-37	39.70 [1.563]
-40	42.10 [1.657]
-49	49.30 [1.941]
-50	50.10 [1.972]
-60	58.10 [2.287]
-70	66.10 [2.602]
-80	74.10 [2.917]
-90	82.10 [3.232]
-100	90.10 [3.547]

FIG 4
-60 POSITION SHOWN
(SAME AS FIG 2, EXCEPT AS SHOWN)
USE FOR -13, -25, -37, -40, -49, -50, -60, -70, -80, -90 & -100 POSITIONS WITH -WT & -BL OPTION
-WT & -BL TYPE ONLY AVAILABLE WITH -01 CARD

PROPRIETARY NOTE
THIS DOCUMENT CONTAINS INFORMATION
CONFIDENTIAL AND PROPRIETARY TO
SAMTEC, INC. AND SHALL NOT BE REPRODUCED
OR TRANSFERRED TO OTHER DOCUMENTS OR
DISCLOSED TO OTHERS OR USED FOR ANY
PURPOSE OTHER THAN THAT WHICH IT WAS
OBTAINED WITHOUT THE EXPRESSED WRITTEN
CONSENT OF SAMTEC, INC.

samtec
520 PARK EAST BLVD, NEW ALBANY, IN 47150
PHONE: 812-944-6733 FAX: 812-948-5047
e-Mail: info@SAMTEC.com code: 55322

-L = $\varnothing 0.84 \pm 0.08$ [.033 \pm .003]
PTH (2 PLCS)
(TO BE SOLDERED USING
PASTE-IN-HOLE TECHNOLOGY)

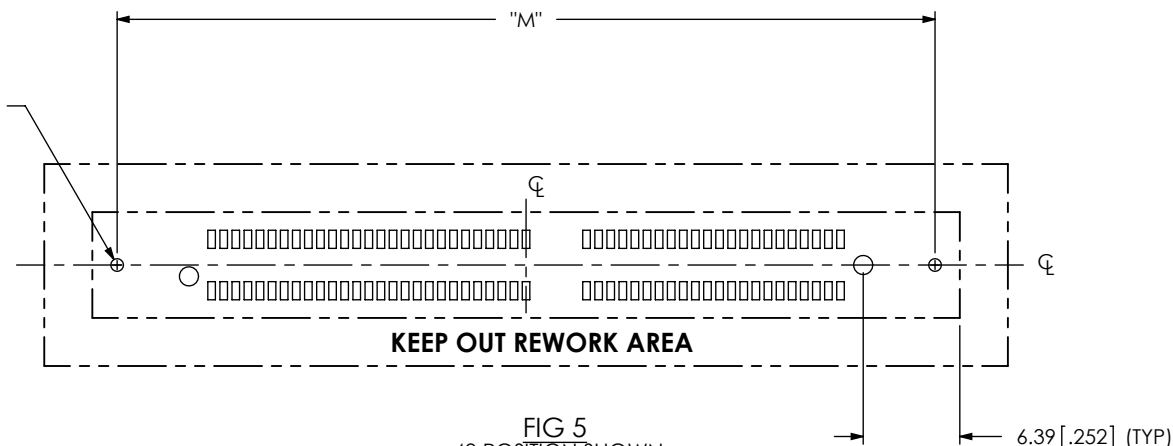


TABLE 6	
POSITION	"M"
-13	25.30 [0.996]
-25	34.90 [1.374]
-37	44.50 [1.752]
-49	54.10 [2.130]

FIG 5
-49 POSITION SHOWN
(SAME AS FIG 2, EXCEPT AS SHOWN)
USE FOR -13, -25, -37 & -49 POSITIONS WITH -L OPTION
-L TYPE ONLY AVAILABLE WITH -01 CARD

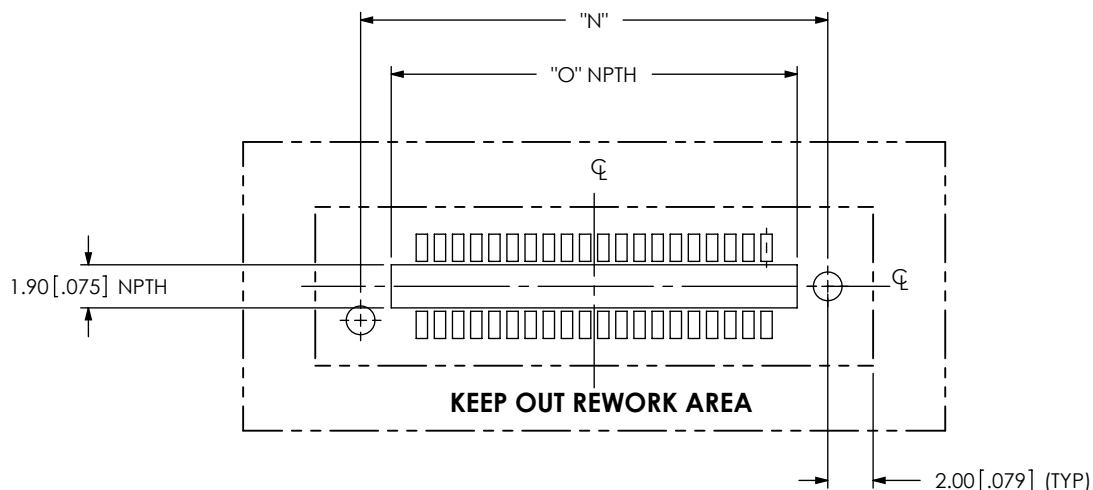


TABLE 7		
POSITION	"N"	"O"
-10	12.20 [0.480]	9.90 [0.390]
-13	15.00 [0.591]	12.30 [0.484]
-20	20.60 [0.811]	17.90 [0.705]

FIG 6
-20 POSITION SHOWN
(SAME AS FIG 1, EXCEPT AS SHOWN)
USE FOR -10, 13, OR -20 POSITIONS WITH -PE OPTION
-PE TYPE ONLY AVAILABLE WITH -01 CARD

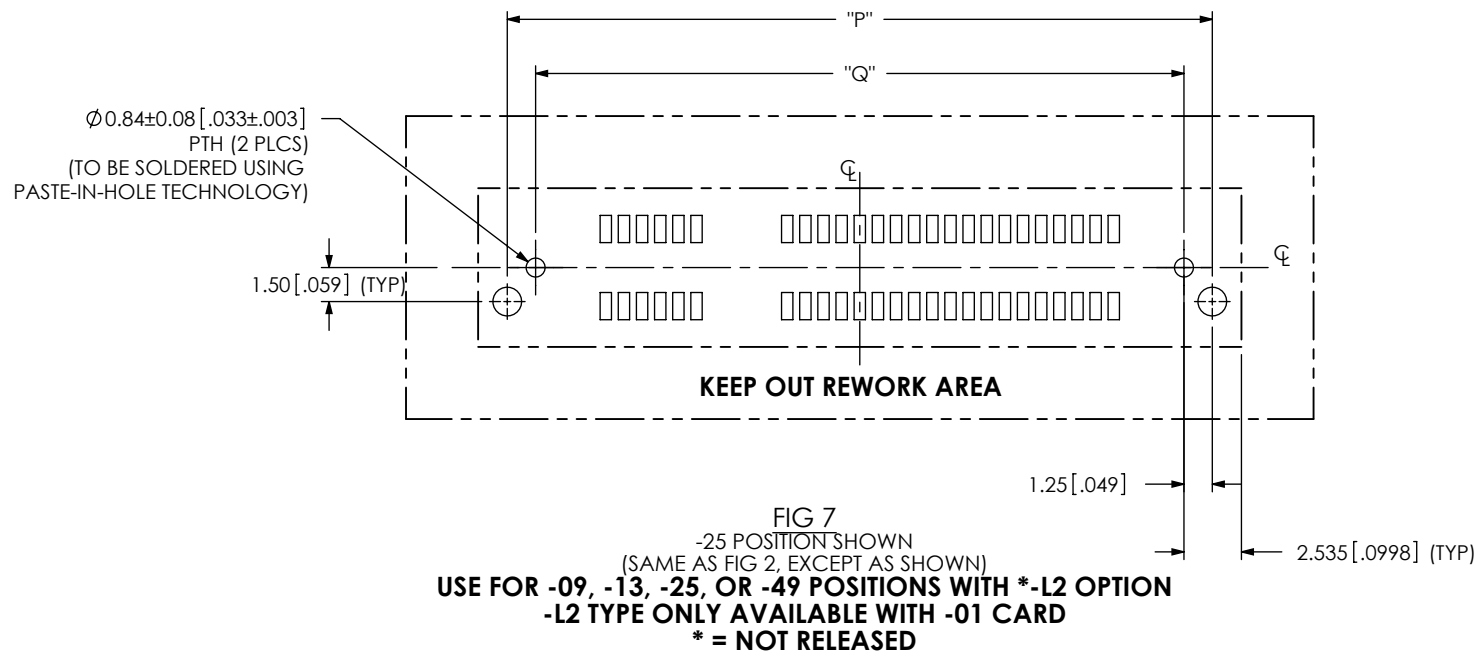
PROPRIETARY NOTE

THIS DOCUMENT CONTAINS INFORMATION
CONFIDENTIAL AND PROPRIETARY TO
SAMTEC, INC. AND SHALL NOT BE REPRODUCED
OR TRANSFERRED TO OTHER DOCUMENTS OR
DISCLOSED TO OTHERS OR USED FOR ANY
PURPOSE OTHER THAN THAT WHICH IT WAS
OBTAINED WITHOUT THE EXPRESSED WRITTEN
CONSENT OF SAMTEC, INC.

samtec

520 PARK EAST BLVD, NEW ALBANY, IN 47150
PHONE: 812-944-6733 FAX: 812-948-5047
e-Mail: info@SAMTEC.com code: 55322

TABLE 8				
STYLE	"P"		"Q"	
-09	18.29	[0.720]	15.79	[0.622]
-13	21.49	[0.846]	18.99	[0.748]
-25	31.09	[1.224]	28.59	[1.126]
-49	50.29	[1.980]	47.79	[1.881]



PROPRIETARY NOTE

THIS DOCUMENT CONTAINS INFORMATION
CONFIDENTIAL AND PROPRIETARY TO
SAMTEC, INC. AND SHALL NOT BE REPRODUCED
OR TRANSFERRED TO OTHER DOCUMENTS OR
DISCLOSED TO OTHERS OR USED FOR ANY
PURPOSE OTHER THAN THAT WHICH IT WAS
OBTAINED WITHOUT THE EXPRESSED WRITTEN
CONSENT OF SAMTEC, INC.

samtec

520 PARK EAST BLVD, NEW ALBANY, IN 47150
PHONE: 812-944-6733 FAX: 812-948-5047
e-Mail: info@SAMTEC.com code: 55322

NOTE: STENCIL TO BE 0.15[.006] THICK.

TABLE 9	
POSITION	"R"
-13	25.30 [.504]
-25	34.90 [1.374]
-37	44.50[1.752]
-49	54.10 [2.130]

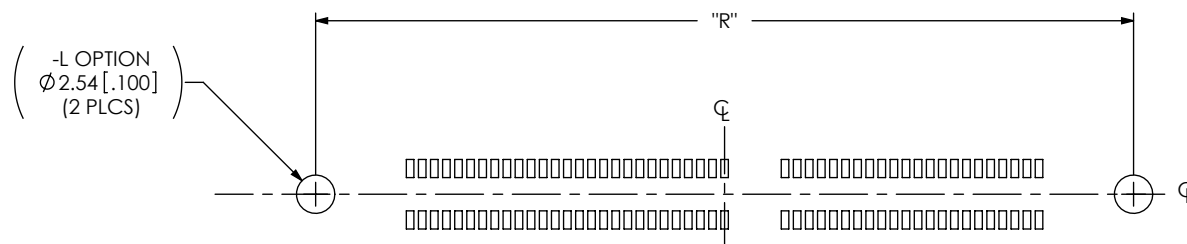


FIG 8
-49 POSITION SHOWN
(SAME AS FIG 2, EXCEPT AS SHOWN)
USE FOR -13, -25, -37 & -49 POSITIONS
-L TYPE ONLY AVAILABLE WITH -01 CARD

PROPRIETARY NOTE

THIS DOCUMENT CONTAINS INFORMATION
CONFIDENTIAL AND PROPRIETARY TO
SAMTEC, INC. AND SHALL NOT BE REPRODUCED
OR TRANSFERRED TO OTHER DOCUMENTS OR
DISCLOSED TO OTHERS OR USED FOR ANY
PURPOSE OTHER THAN THAT WHICH IT WAS
OBTAINED WITHOUT THE EXPRESSED WRITTEN
CONSENT OF SAMTEC, INC.

samtec

520 PARK EAST BLVD, NEW ALBANY, IN 47150
PHONE: 812-944-6733 FAX: 812-948-5047
e-Mail: info@SAMTEC.com code: 55322

NOTE: STENCIL TO BE 0.15[.006] THICK.

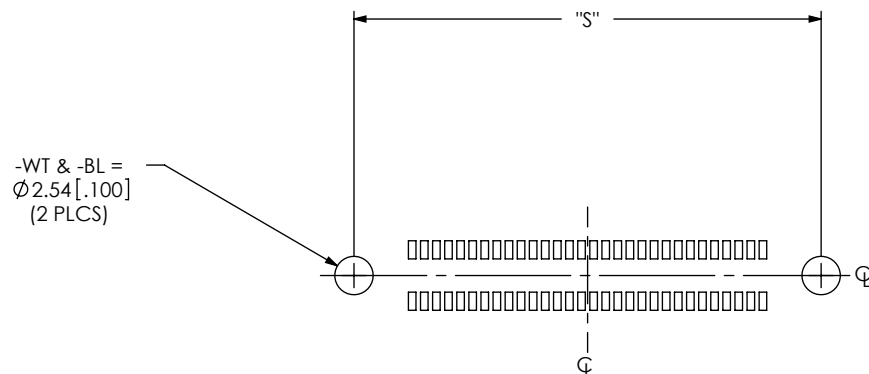


TABLE 10	
POSITION	"S"
-10	14.90[.587]
-20	22.90[.902]
-30	30.90[1.217]

FIG 9
-30 POSITION SHOWN
(SAME AS FIG 1, EXCEPT AS SHOWN)
USE FOR -10, -20 OR -30 POSITIONS WITH -WT & -BL OPTION

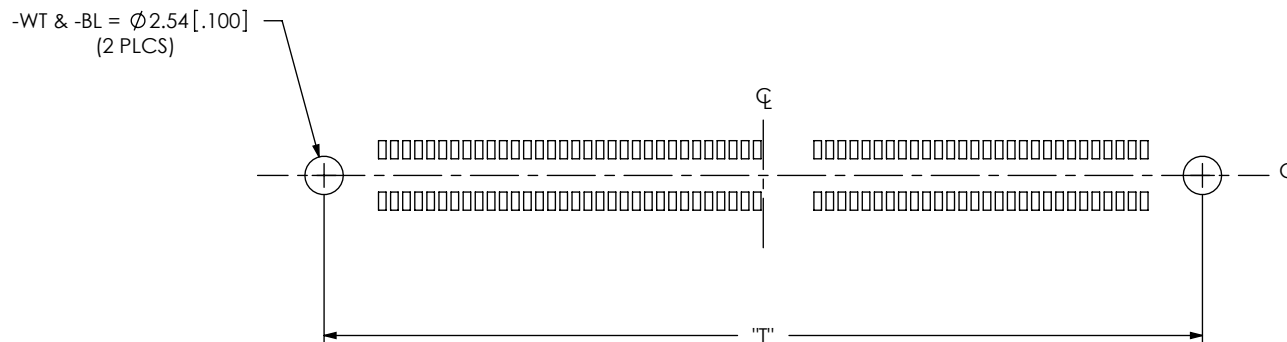


TABLE 4	
POSITION	"T"
-13	20.50 [0.807]
-25	30.10 [1.185]
-37	39.70 [1.563]
-40	42.10 [1.657]
-49	49.30 [1.941]
-50	50.10 [1.972]
-60	58.10 [2.287]
-70	66.10 [2.602]
-80	74.10 [2.917]
-90	82.10 [3.232]
-100	90.10 [3.547]

FIG 10
-60 POSITION SHOWN
(SAME AS FIG 2, EXCEPT AS SHOWN)
USE FOR -13, -25, -37, -40, -49, -50, -60, -70, -80, -90 & -100 POSITIONS WITH -WT & -BL OPTION

PROPRIETARY NOTE

THIS DOCUMENT CONTAINS INFORMATION
CONFIDENTIAL AND PROPRIETARY TO
SAMTEC, INC. AND SHALL NOT BE REPRODUCED
OR TRANSFERRED TO OTHER DOCUMENTS OR
DISCLOSED TO OTHERS OR USED FOR ANY
PURPOSE OTHER THAN THAT WHICH IT WAS
OBTAINED WITHOUT THE EXPRESSED WRITTEN
CONSENT OF SAMTEC, INC.

samtec

520 PARK EAST BLVD, NEW ALBANY, IN 47150
PHONE: 812-944-6733 FAX: 812-948-5047
e-Mail: info@SAMTEC.com code: 55322

NOTE: STENCIL TO BE 0.15[.006] THICK.

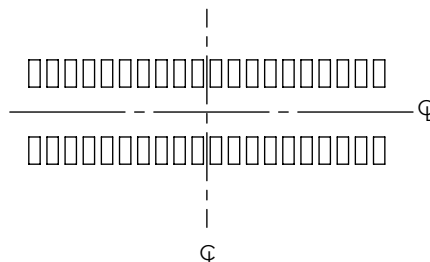


FIG 11
-20 POSITION SHOWN
(SAME AS FIG 1, EXCEPT AS SHOWN)
USE FOR -10, 13, OR -20 POSITIONS WITH -PE OPTION

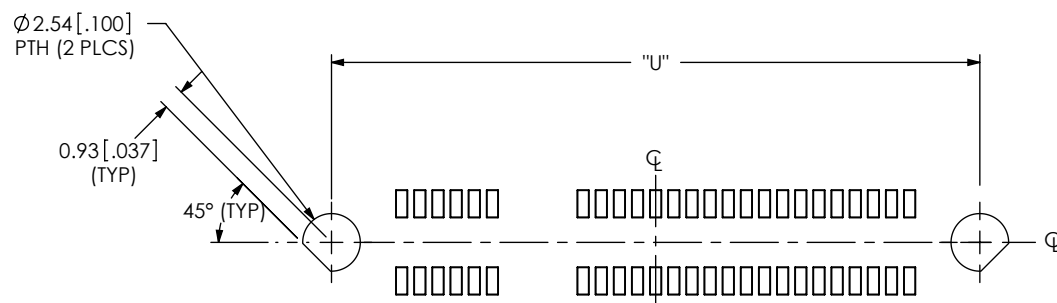


FIG 12
-25 POSITION SHOWN
(SAME AS FIG 2, EXCEPT AS SHOWN)
USE FOR -09, -13, -25, OR -49 POSITIONS WITH *-L2 OPTION
-L2 TYPE ONLY AVAILABLE WITH -01 CARD
*** = NOT RELEASED**

TABLE 12		
STYLE	"U"	
-09	15.79	[0.622]
-13	18.99	[0.748]
-25	28.59	[1.126]
-49	47.79	[1.881]

F:\dwg\misc\mktg\footprint\HSEC8-1XXX-XX-X-D-DV-X-FOOTPRINT.SLDDRW

PROPRIETARY NOTE

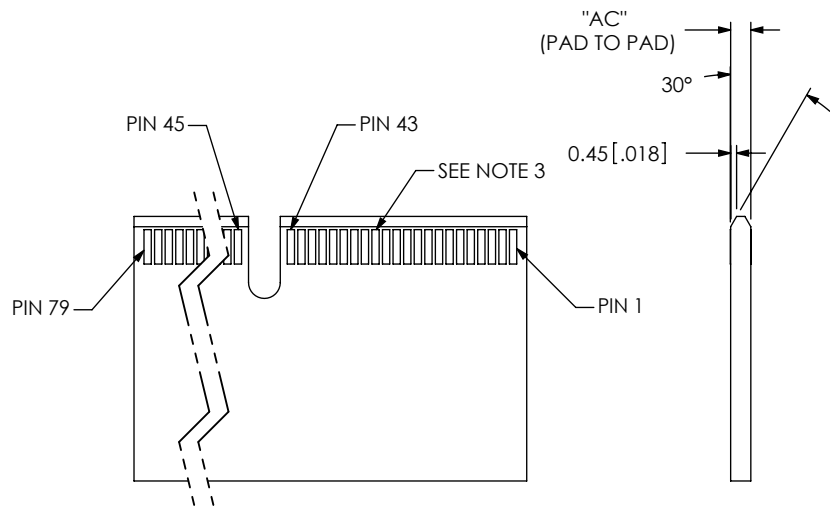
THIS DOCUMENT CONTAINS INFORMATION
CONFIDENTIAL AND PROPRIETARY TO
SAMTEC, INC. AND SHALL NOT BE REPRODUCED
OR TRANSFERRED TO OTHER DOCUMENTS OR
DISCLOSED TO OTHERS OR USED FOR ANY
PURPOSE OTHER THAN THAT WHICH IT WAS
OBTAINED WITHOUT THE EXPRESSED WRITTEN
CONSENT OF SAMTEC, INC.

samtec

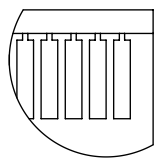
520 PARK EAST BLVD, NEW ALBANY, IN 47150
PHONE: 812-944-6733 FAX: 812-948-5047
e-Mail: info@SAMTEC.com code: 55322

REVISION V

RECOMMENDED MATING CARD LAYOUT FOR HSEC8-1XXX-XX-XX-DV-X-XX



DESIGNED & DIMENSIONED
IN MILLIMETERS [ENGLISH]



DETAIL 'A'
SCALE 4 : 1

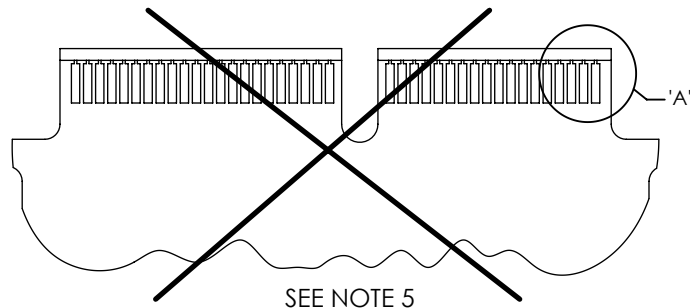


TABLE 13							
STYLE	"V"	"W"	"X"	"Y"	"Z"	"AA"	"AB"
-10	7.20 [0.283]	N/A	N/A	9.25 [0.364]	N/A	18.25 [0.719]	14.25 [0.561]
-13	12.80 [0.504]	5	4.00 [0.157]	14.85 [0.585]	6.00 [0.236]	23.85 [0.939]	19.85 [0.781]
-20	15.20 [0.598]	N/A	N/A	17.25 [0.679]	N/A	26.25 [1.033]	22.25 [0.876]
-25	22.40 [0.882]	5	4.00 [0.157]	24.45 [0.963]	6.00 [0.236]	33.45 [1.317]	29.45 [1.159]
-30	23.20 [0.913]	N/A	N/A	25.25 [0.994]	N/A	34.25 [1.348]	30.25 [1.191]
-37	32.00 [1.260]	20	16.00 [0.630]	34.05 [1.341]	18.00 [0.709]	43.05 [1.695]	39.05 [1.537]
-40	34.40 [1.354]	21	16.80 [0.661]	36.45 [1.435]	18.80 [0.740]	45.45 [1.789]	41.45 [1.632]
-49	41.60 [1.638]	26	20.80 [0.819]	43.65 [1.719]	22.80 [0.898]	52.65 [2.073]	48.65 [1.915]
-50	42.40 [1.669]	26	20.80 [0.819]	44.45 [1.750]	22.80 [0.898]	53.45 [2.104]	49.45 [1.947]
-60	50.40 [1.984]	31	24.80 [0.976]	52.45 [2.065]	26.80 [1.055]	61.45 [2.419]	57.45 [2.262]
-70	58.40 [2.299]	31	24.80 [0.976]	60.45 [2.380]	26.80 [1.055]	69.45 [2.734]	65.45 [2.577]
-80	66.40 [2.614]	31	24.80 [0.976]	68.45 [2.695]	26.80 [1.055]	77.45 [3.049]	73.45 [2.892]
-90	74.40 [2.929]	31	24.80 [0.976]	76.45 [3.010]	26.80 [1.055]	85.45 [3.364]	81.45 [3.207]
-100	82.40 [3.244]	31	24.80 [0.976]	84.45 [3.325]	26.80 [1.055]	93.45 [3.679]	89.45 [3.522]

TABLE 14	
MATING CARD THICKNESS TYPE	"AC"
-01	1.570 [0.062] ± 0.157 [0.0062]
-02	2.000 [0.079] ± 0.200 [0.0079]
-03	2.360 [0.093] ± 0.236 [0.0093]
*-04	3.180 [0.125] ± 0.318 [0.0125]

*= NOT TOOLED

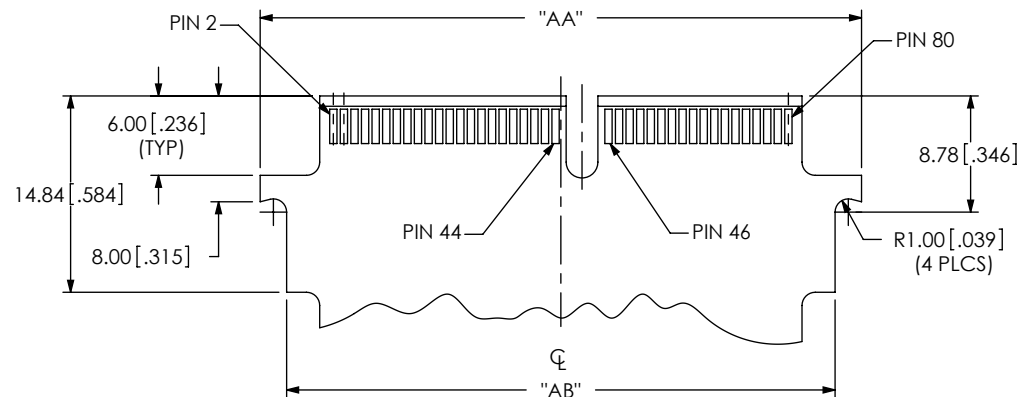
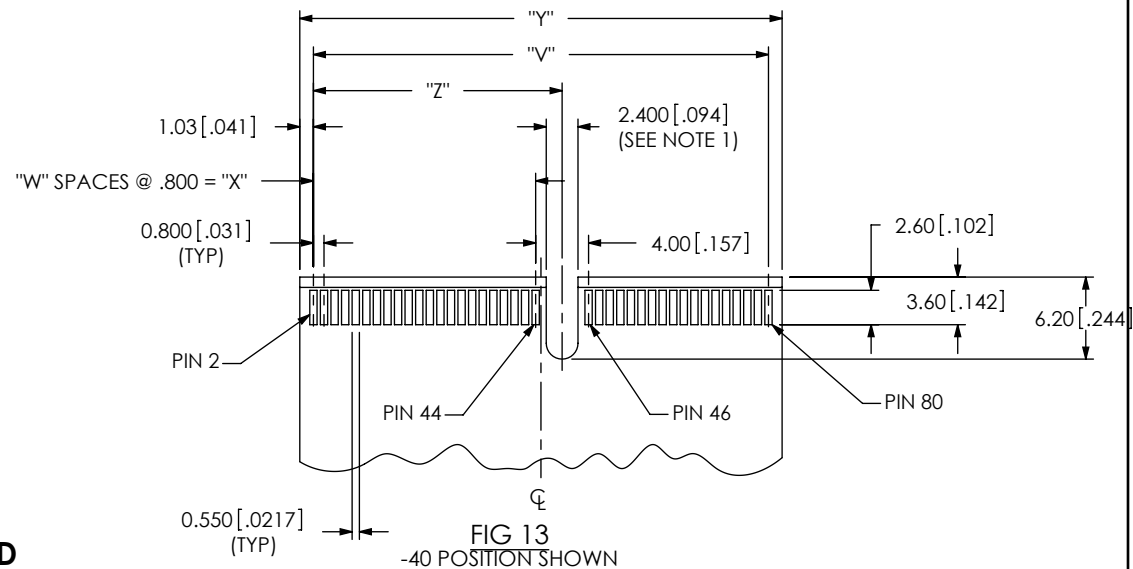


FIG 14
-40 POSITION WITH -BL OPTION SHOWN
(SAME AS FIG 13, EXCEPT AS SHOWN)

NOTES:

1. -10, -20 AND -30 CARDS HAVE NO SLOT.
2. ALL DIMENSIONS ARE SYMMETRIC ABOUT THE CENTERLINE.
3. PLATING TO BE .000030 INCHES GOLD WITH A HARDNESS OF 130-200 KNOOP PER ASTM B 488 TYPE 2, GRADE C.
4. NOTE DELETED.
5. FOR PROPER CONTACT REGISTRATION, PLATING BUS TIES TO BE THE WIDTH OF THE EDGE FINGER.

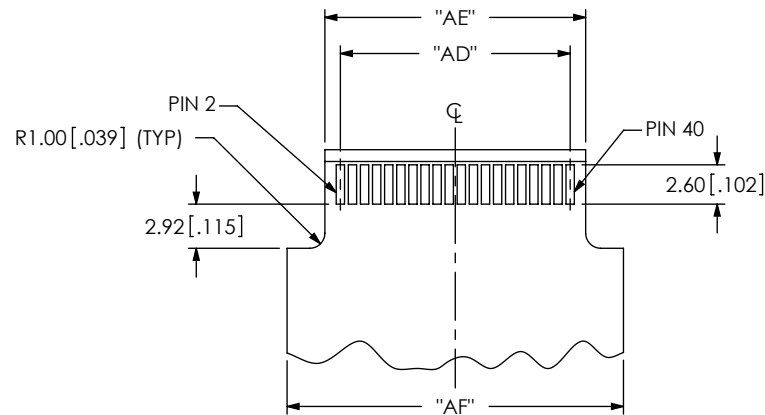
F:\dwg\misc\mktg\footprnt\HSEC8-1XXX-XX-X-D-DV-X-FOOTPRINT.SLDDRW

PROPRIETARY NOTE

THIS DOCUMENT CONTAINS INFORMATION
CONFIDENTIAL AND PROPRIETARY TO
SAMTEC, INC. AND SHALL NOT BE REPRODUCED
OR TRANSFERRED TO OTHER DOCUMENTS OR
DISCLOSED TO OTHERS OR USED FOR ANY
PURPOSE OTHER THAN THAT WHICH IT WAS
OBTAINED WITHOUT THE EXPRESSED WRITTEN
CONSENT OF SAMTEC, INC.

samtec

520 PARK EAST BLVD., NEW ALBANY, IN 47150
PHONE: 812-944-6733 FAX: 812-948-5047
e-Mail: info@SAMTEC.com code: 55322



SEE NOTE 5

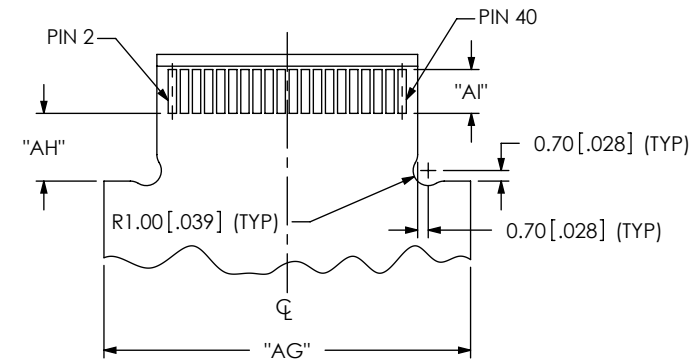
FIG 15

-20 POSITION SHOWN
(SAME AS FIG 13 EXCEPT AS SHOWN)

USE FOR -10, 13, OR -20 POSITIONS WITH -PE OPTION
TOP ENTRY

TABLE 15

STYLE	"AD"	"AE"	"AF"	"AG"
-10	7.20 [0.283]	9.25 [0.364]	14.25 [0.561]	16.25 [0.640]
-13	9.60 [0.378]	11.65 [0.459]	16.65 [0.656]	18.65 [0.734]
-20	15.20 [0.598]	17.25 [0.679]	22.25 [0.876]	24.25 [0.955]



SEE NOTE 5

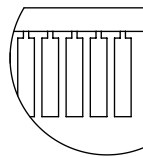
FIG 16

-20 POSITION SHOWN
(SAME AS FIG 15 EXCEPT AS SHOWN)

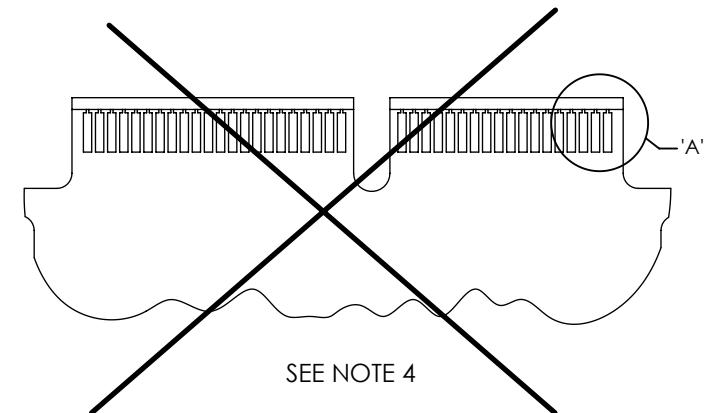
USE FOR -10, 13, OR -20 POSITIONS WITH -PE OPTION
BOTTOM ENTRY

TABLE 16

SUBSTRATE THICKNESS	"AH"	"AI"
1.57 [.062]	4.48 [0.176]	2.90 [0.114]
2.36 [.093]	5.33 [0.210]	3.05 [0.120]
3.18 [.125]	6.20 [0.244]	3.20 [0.126]



DETAIL 'A'
SCALE 4:1



SEE NOTE 4

NOTES:

1. ALL DIMENSIONS ARE SYMMETRIC ABOUT THE CENTERLINE.
2. PLATING TO BE .000030 INCHES GOLD WITH A HARDNESS OF 130-200 KNOOP PER ASTM B 488 TYPE 2, GRADE C.
3. NOTE DELETED.
4. FOR PROPER CONTACT REGISTRATION, PLATING BUS TIES TO BE THE WIDTH OF THE EDGE FINGER.
5. MIN REQUIRED LENGTH.

PROPRIETARY NOTE

THIS DOCUMENT CONTAINS INFORMATION CONFIDENTIAL AND PROPRIETARY TO SAMTEC, INC. AND SHALL NOT BE REPRODUCED OR TRANSFERRED TO OTHER DOCUMENTS OR DISCLOSED TO OTHERS OR USED FOR ANY PURPOSE OTHER THAN THAT WHICH IT WAS OBTAINED WITHOUT THE EXPRESSED WRITTEN CONSENT OF SAMTEC, INC.

samtec

520 PARK EAST BLVD, NEW ALBANY, IN 47150
PHONE: 812-944-6733 FAX: 812-948-5047
e-Mail: info@SAMTEC.com code: 55322