

CABLE HOOD AND CONNECTOR SET

Plastic hood with crimp connector body – straight cable entry



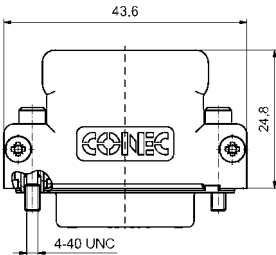
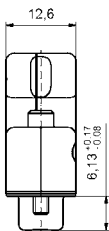
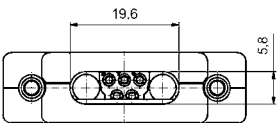
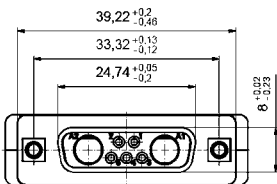
RoHS compliant

DESCRIPTION

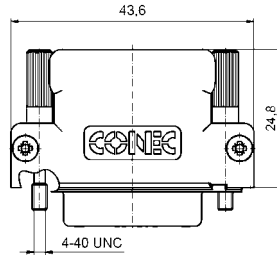
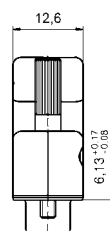
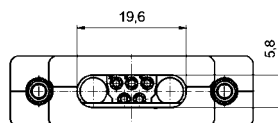
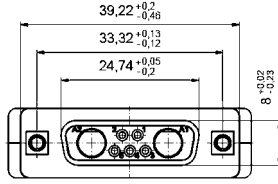
- Compact 7W2 shell inclusive Crimp Socket connector
- Available with bridged signal contacts
- Short 4-40 UNC screws with Phillips or Allen key
- Material Housing: PBT GF; UL 94 V0, black
- Integrated strain relief
- Power contacts for wire size AWG 8 to AWG 20
- Hood can be used only with a special connector

PRODUCT DRAWING

Hood with short screw
(Socket connector included)



Hood with jack screw
(Socket connector included)



ORDER DATA

(Dim. = mm)

| Version | SOCKET CONNECTOR | | | Part number |
|---------------------------------|------------------|--------------------------|--|-------------|
| | Signal contacts | Screw design | | |
| Hood/Crimp Socket connector 7W2 | without | Short/Allen key | | 13-000210 |
| Hood/Crimp Socket connector 7W2 | without | Short/Phillips head | | 13-000220 |
| Hood/Crimp Socket connector 7W2 | bridged | Short/Allen key | | 13-000231 |
| Hood/Crimp Socket connector 7W2 | bridged | Short/Phillips head | | 13-000241 |
| Hood/Crimp Socket connector 7W2 | without | Jack screw/Allen key | | 13-000370 |
| Hood/Crimp Socket connector 7W2 | without | Jack screw/Phillips head | | 13-000380 |
| Hood/Crimp Socket connector 7W2 | bridged | Jack screw/Allen key | | 13-000391 |
| Hood/Crimp Socket connector 7W2 | bridged | Jack screw/Phillips head | | 13-000401 |