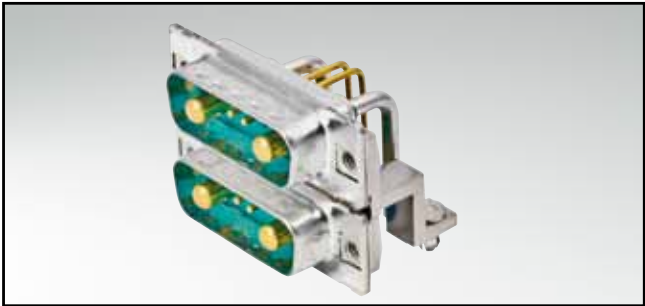


POWER MODUL INPUT CONNECTORS

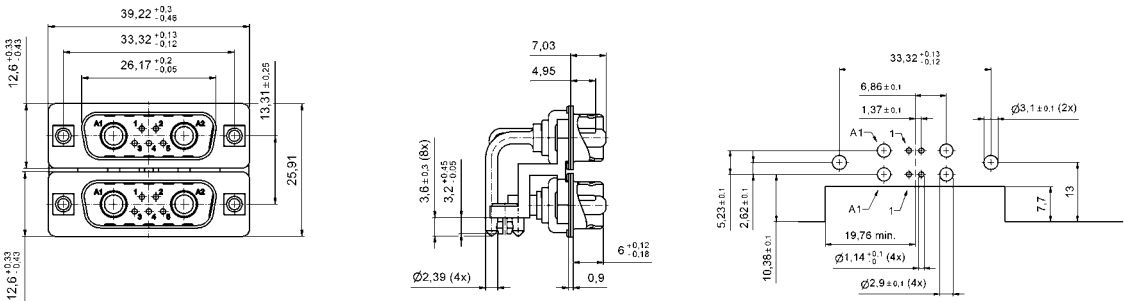
Plug connector – solder pin – angled – precision machined contacts – dual port style – through hole solder type



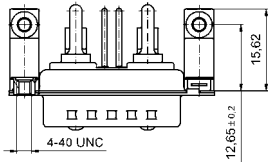
RoHS compliant

- DESCRIPTION**
- Standard version according to MTCA specification
 - Design 7W2 for -48/-60 V Power modul
 - 2 power contacts 24 A / 2 signal contacts per port
 - Mounting styles:
 - Mounting bracket with PCB clip, 4-40 UNC threaded insert
 - Mounting bracket with PCB clip, 4-40 UNC hex bolt
 - Note for 9W4 product please contact factory

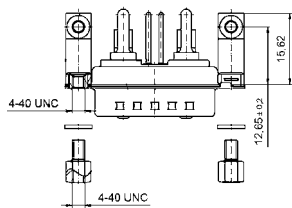
PRODUCT DRAWING



Mounting style:
Mounting bracket with PCB clip,
4-40 UNC threaded insert



Mounting style:
Mounting bracket with PCB clip,
threaded insert and 4-40 UNC hex bolt



ORDER DATA (Dim. = mm)

PLUG CONNECTOR		
Version	Mounting style	Part number
7W2	Mounting bracket with PCB clip / Threaded insert and 4-40 UNC Hex bolt	13-000011
7W2	Mounting bracket with PCB clip / 4-40 UNC Threaded insert	13-000021

PCB clip 3.1 mm ± 0.10 mm hole diameter and 1.6 mm circuit board thickness