

## DS90UR905Q/DS90UR906Q 5 - 65 MHz 24-bit Color FPD-Link II Serializer and Deserializer

Check for Samples: [DS90UR905Q](#), [DS90UR906Q](#)

### FEATURES

- 5 – 65 MHz PCLK Support (140 Mbps – 1.82 Gbps)
  - AC Coupled STP Interconnect Cable up to 10 Meters
  - Integrated Terminations on Ser and Des
  - @ Speed Link BIST Mode and Reporting Pin
  - Optional I2C Compatible Serial Control Bus
  - RGB888 + VS, HS, DE Support
  - Power Down Mode Minimizes Power Dissipation
  - 1.8V or 3.3V Compatible LVCMOS I/O Interface
  - Automotive Grade Product: AEC-Q100 Grade 2 Qualified
  - >8 kV HBM and ISO 10605 ESD Rating
  - Backward Compatible Mode for Operation with Older Generation Devices
- SERIALIZER — DS90UR905Q**
- RGB888 + VS/HS/DE Serialized to 1 Pair FPD-Link II
  - Randomizer/Scrambler — DC-Balanced Data Stream
  - Selectable Output VOD and Adjustable De-Emphasis
- DESERIALIZER — DS90UR906Q**
- FAST Random Data Lock; No Reference Clock Required
  - Adjustable Input Receiver Equalization
  - LOCK (Real Time Link Status) Reporting Pin
  - EMI Minimization on Output Parallel Bus (SSCG)
  - Output Slew Control (OS)

### APPLICATIONS

- Automotive Display for Navigation
- Automotive Display for Entertainment

### DESCRIPTION

The DS90UR905Q/906Q chipset translates a parallel RGB Video Interface into a high-speed serialized interface over a single pair. This serial bus scheme greatly eases system design by eliminating skew problems between clock and data, reduces the number of connector pins, reduces the interconnect size, weight, and cost, and overall eases PCB layout. In addition, internal DC balanced decoding is used to support AC-coupled interconnects.

The DS90UR905Q Ser (serializer) embeds the clock, balances the data payload, and level shifts the signals to high-speed low voltage differential signaling. Up to 24 inputs are serialized along with the three video control signals. This supports full 24-bit color or 18-bit color and 6 general purpose signals (e.g. Audio I2S) applications.

The DS90UR906Q Des (deserializer) recovers the data (RGB) and control signals and extracts the clock from the serial stream. It is able to lock to the incoming data stream without the use of a training sequence or special SYNC patterns, and does not require a reference clock. A link status (LOCK) output signal is provided.

Serial transmission is optimized by a user selectable de-emphasis, differential output level select features, and receiver equalization. EMI is minimized by the use of low voltage differential signaling, receiver drive strength control, and spread spectrum clocking compatibility. The Des may be configured to generate Spread Spectrum Clock and Data on its parallel outputs.

The DS90UR905Q (Ser) is offered in a 48-pin WQFN and the DS90UR906Q (Des) is offered in a 60-pin WQFN package. They are specified over the automotive AEC-Q100 grade 2 temperature range of -40°C to +105°C.



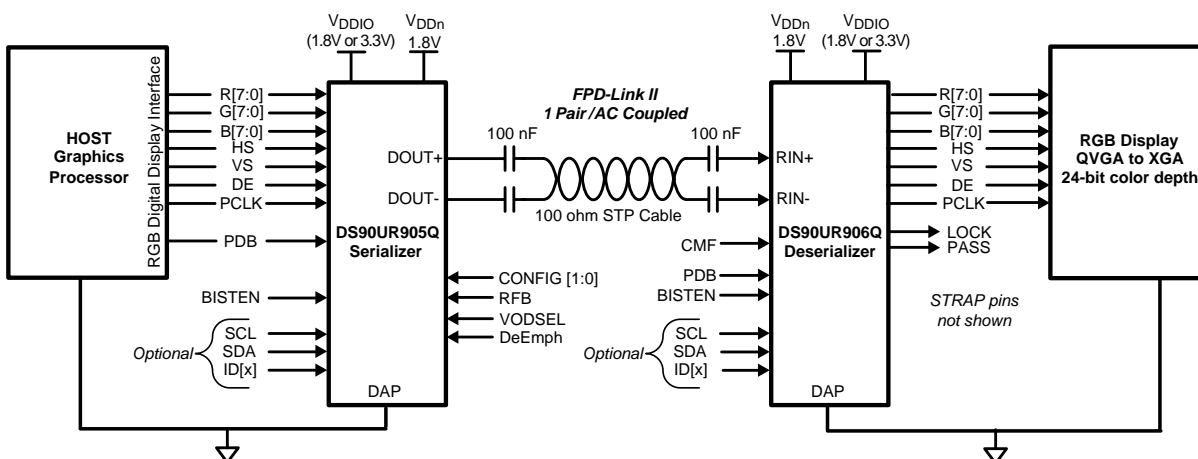
Please be aware that an important notice concerning availability, standard warranty, and use in critical applications of Texas Instruments semiconductor products and disclaimers thereto appears at the end of this data sheet.

All trademarks are the property of their respective owners.

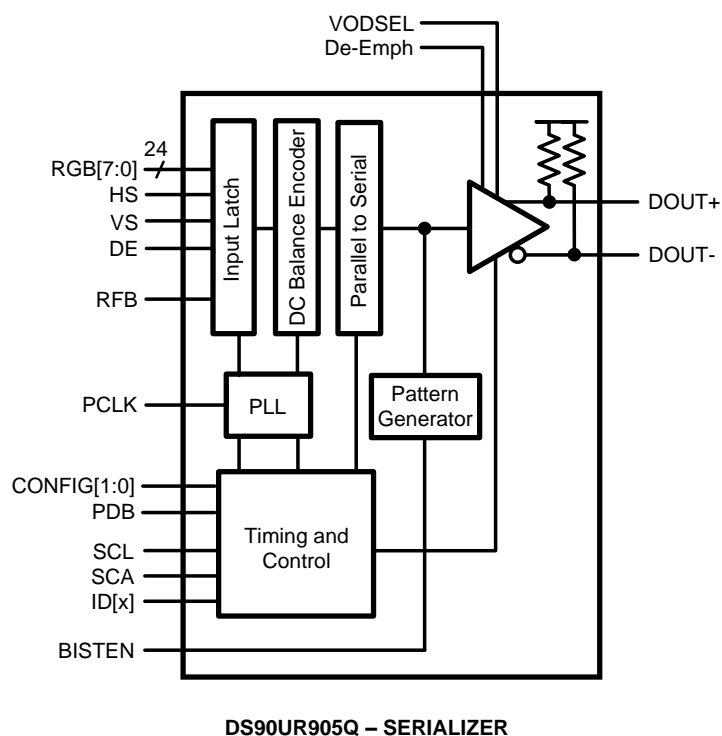
PRODUCTION DATA information is current as of publication date. Products conform to specifications per the terms of the Texas Instruments standard warranty. Production processing does not necessarily include testing of all parameters.

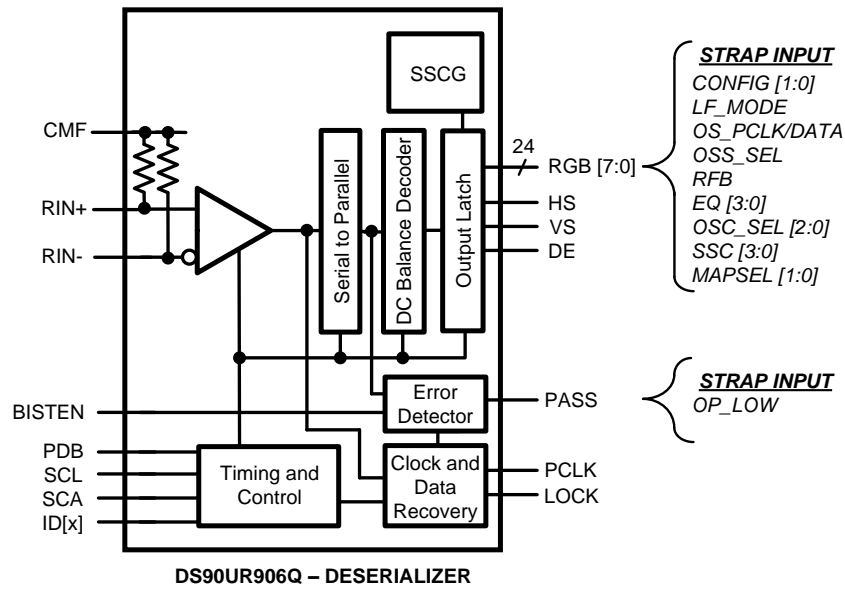
Copyright © 2009–2013, Texas Instruments Incorporated

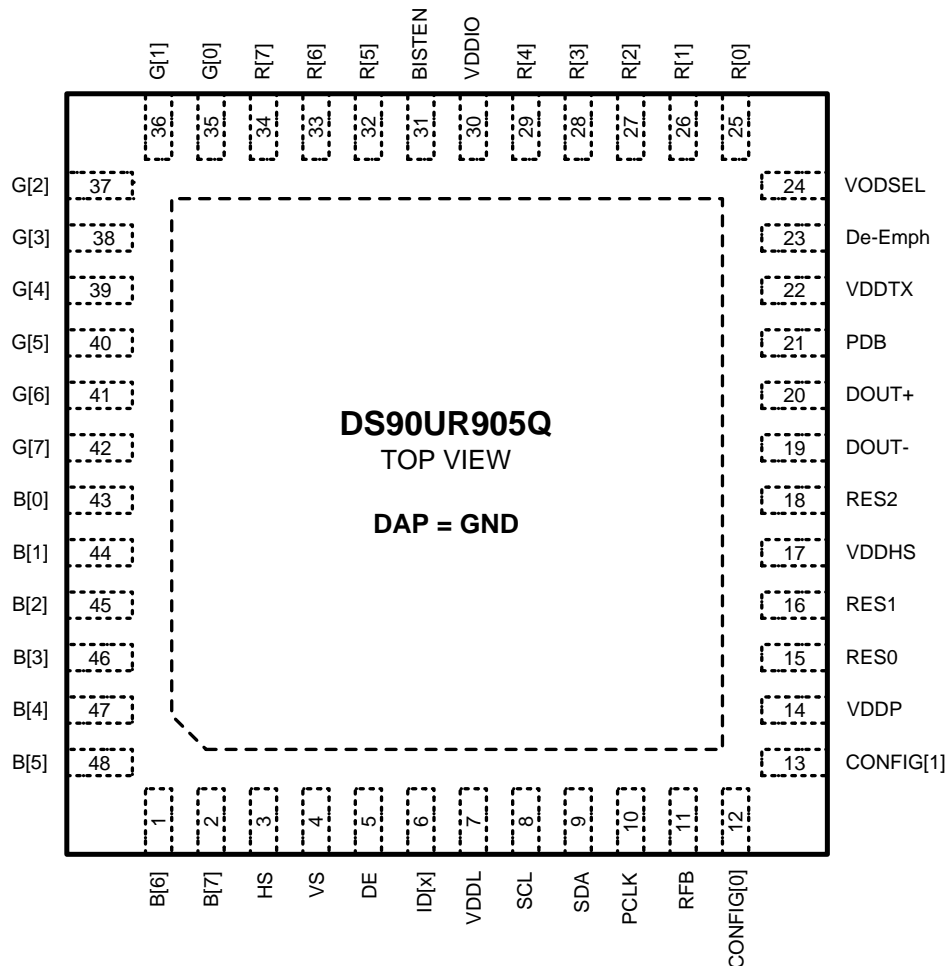
## Applications Diagram



## Block Diagrams





**DS90UR905Q Pin Diagram**

**Serializer - DS90UR905Q**  
**48 Pin WQFN Package (Top View)**  
 See Package Number RHS0048A

**DS90UR905Q Serializer Pin Functions<sup>(1)</sup>**

Pin Name	Pin #	I/O, Type	Description
<b>LVC MOS Parallel Interface</b>			
R[7:0]	34, 33, 32, 29, 28, 27, 26, 25	I, LVC MOS w/ pull-down	RED Parallel Interface Data Input Pins (MSB = 7, LSB = 0)
G[7:0]	42, 41, 40, 39, 38, 37, 36, 35	I, LVC MOS w/ pull-down	GREEN Parallel Interface Data Input Pins (MSB = 7, LSB = 0)
B[7:0]	2, 1, 48, 47, 46, 45, 44, 43	I, LVC MOS w/ pull-down	BLUE Parallel Interface Data Input Pins (MSB = 7, LSB = 0)
HS	3	I, LVC MOS w/ pull-down	Horizontal Sync Input Video control signal pulse width must be 3 PCLKs or longer to be transmitted when the Control Signal Filter is enabled (CONFIG[1:0] = 01). There is no restriction on the minimum transition pulse when the Control Signal Filter is disabled (CONFIG[1:0] = 00). The signal is limited to 2 transitions per 130 PCLKs.
VS	4	I, LVC MOS w/ pull-down	Vertical Sync Input Video control signal is limited to 1 transition per 130 PCLKs. Thus, the minimum pulse width is 130 PCLKs.

(1) NOTE: 1 = HIGH, 0 = LOW.

**DS90UR905Q Serializer Pin Functions<sup>(1)</sup> (continued)**

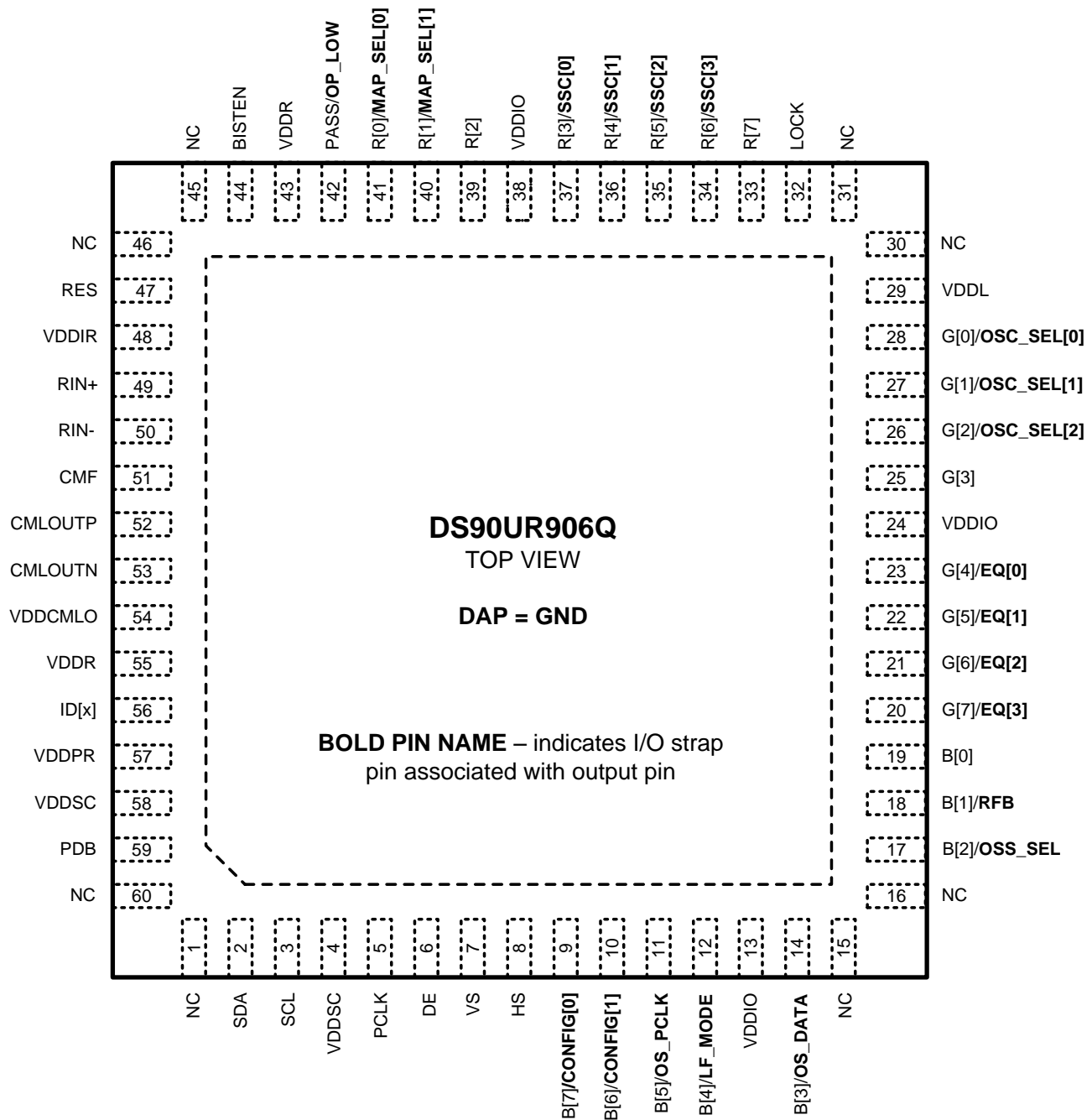
Pin Name	Pin #	I/O, Type	Description
DE	5	I, LVCMOS w/ pull-down	Data Enable Input Video control signal pulse width must be 3 PCLKs or longer to be transmitted when the Control Signal Filter is enabled (CONFIG[1:0] = 01). There is no restriction on the minimum transition pulse when the Control Signal Filter is disabled (CONFIG[1:0] = 00). The signal is limited to 2 transitions per 130 PCLKs.
PCLK	10	I, LVCMOS w/ pull-down	Pixel Clock Input Latch edge set by RFB function.
<b>Control and Configuration</b>			
PDB	21	I, LVCMOS w/ pull-down	Power-down Mode Input PDB = 1, Ser is enabled (normal operation). Refer to <a href="#">"POWER UP REQUIREMENTS AND PDB PIN"</a> in the Applications Information Section. PDB = 0, Ser is powered down When the Ser is in the power-down state, the driver outputs (DOUT+/-) are both logic high, the PLL is shutdown, IDD is minimized. Control Registers are <b>RESET</b> .
VODSEL	24	I, LVCMOS w/ pull-down	Differential Driver Output Voltage Select — Pin or Register Control VODSEL = 1, LVDS VOD is $\pm 420$ mV, 840 mVp-p (typ) — Long Cable / De-E Applications VODSEL = 0, LVDS VOD is 280 mV, 560 mVp-p (typ)
De-Emph	23	I, Analog w/ pull-up	De-Emphasis Control — Pin or Register Control De-Emph = open (float) - disabled To enable De-emphasis, tie a resistor from this pin to GND or control via register. See <a href="#">Table 4</a> .
RFB	11	I, LVCMOS w/ pull-down	Pixel Clock Input Latch Edge Select — Pin or Register Control RFB = 1, parallel interface data and control signals are latched on the rising clock edge. RFB = 0, parallel interface data and control signals are latched on the falling clock edge.
CONFIG[1:0]	13, 12	I, LVCMOS w/ pull-down	Operating Modes — Pin or Register Control Determine the DS90UR905's operating mode and interfacing device. CONFIG[1:0] = 00: Interfacing to DS90UR906, Control Signal Filter DISABLED CONFIG[1:0] = 01: Interfacing to DS90UR906, Control Signal Filter ENABLED CONFIG[1:0] = 10: Interfacing to DS90UR124, DS99R124 CONFIG[1:0] = 11: Interfacing to DS90C124
ID[x]	6	I, Analog	Serial Control Bus Device ID Address Select — Optional Resistor to Ground and 10 k $\Omega$ pull-up to 1.8V rail. See <a href="#">Table 13</a> .
SCL	8	I, LVCMOS	Serial Control Bus Clock Input - Optional SCL requires an external pull-up resistor to V <sub>DDIO</sub> .
SDA	9	I/O, LVCMOS Open Drain	Serial Control Bus Data Input / Output - Optional SDA requires an external pull-up resistor V <sub>DDIO</sub> .
BISTEN	31	I, LVCMOS w/ pull-down	BIST Mode — Optional BISTEN = 1, BIST is enabled BISTEN = 0, BIST is disabled
RES[2:0]	18, 16, 15	I, LVCMOS w/ pull-down	<b>Reserved</b> - tie LOW

**DS90UR905Q Serializer Pin Functions<sup>(1)</sup> (continued)**

Pin Name	Pin #	I/O, Type	Description
<b>FPD-Link II Serial Interface</b>			
DOUT+	20	O, LVDS	True Output. The output must be AC Coupled with a 100 nF capacitor.
DOUT-	19	O, LVDS	Inverting Output. The output must be AC Coupled with a 100 nF capacitor.
<b>Power and Ground<sup>(2)</sup></b>			
VDDL	7	Power	Logic Power, 1.8 V $\pm$ 5%
VDDP	14	Power	PLL Power, 1.8 V $\pm$ 5%
VDDHS	17	Power	TX High Speed Logic Power, 1.8 V $\pm$ 5%
VDDTX	22	Power	Output Driver Power, 1.8 V $\pm$ 5%
VDDIO	30	Power	LVC MOS I/O Power, <b>1.8 V <math>\pm</math>5% OR 3.3 V <math>\pm</math>10%</b>
GND	DAP	Ground	DAP is the large metal contact at the bottom side, located at the center of the WQFN package. <b>Connect to the ground plane (GND)</b> with at least 9 vias.

- (2) The VDD ( $V_{DDn}$  and  $V_{DDIO}$ ) supply ramp should be faster than 1.5 ms with a monotonic rise. If slower than 1.5 ms then a capacitor on the PDB pin is needed to ensure PDB arrives after all the VDD have settled to the recommended operating voltage.

## DS90UR906Q Pin Diagram



**Deserializer - DS90UR906Q**  
**60 Pin WQFN Package (Top View)**  
**See Package Number NKB0060B**

**DS90UR906Q Deserializer Pin Functions<sup>(1)</sup>**

Pin Name	Pin #	I/O, Type	Description
<b>LVC MOS Parallel Interface</b>			
R[7:0]	33, 34, 35, 36, 37, 39, 40, 41	I, STRAP, O, LVC MOS	RED Parallel Interface Data Output Pins (MSB = 7, LSB = 0) In power-down (PDB = 0), outputs are controlled by the OSS_SEL (See Table 8). These pins are inputs during power-up (See STRAP Inputs).
G[7:0]	20, 21, 22, 23, 25, 26, 27, 28	I, STRAP, O, LVC MOS	GREEN Parallel Interface Data Output Pins (MSB = 7, LSB = 0) In power-down (PDB = 0), outputs are controlled by the OSS_SEL (See Table 8). These pins are inputs during power-up (See STRAP Inputs).
B[7:0]	9, 10, 11, 12, 14, 17, 18, 19	I, STRAP, O, LVC MOS	BLUE Parallel Interface Data Output Pins (MSB = 7, LSB = 0) In power-down (PDB = 0), outputs are controlled by the OSS_SEL (See Table 8). These pins are inputs during power-up (See STRAP Inputs).
HS	8	O, LVC MOS	Horizontal Sync Output In power-down (PDB = 0), output is controlled by the OSS_SEL pin (See Table 8). Video control signal pulse width must be 3 PCLKs or longer to be transmitted when the Control Signal Filter is enabled (CONFIG[1:0] = 01). There is no restriction on the minimum transition pulse when the Control Signal Filter is disabled (CONFIG[1:0] = 00). The signal is limited to 2 transitions per 130 PCLKs.
VS	7	O, LVC MOS	Vertical Sync Output In power-down (PDB = 0), output is controlled by the OSS_SEL pin (See Table 8). Video control signal is limited to 1 transition per 130 PCLKs. Thus, the minimum pulse width is 130 PCLKs.
DE	6	O, LVC MOS	Data Enable Output In power-down (PDB = 0), output is controlled by the OSS_SEL pin (See Table 8). Video control signal pulse width must be 3 PCLKs or longer to be transmitted when the Control Signal Filter is enabled (CONFIG[1:0] = 01). There is no restriction on the minimum transition pulse when the Control Signal Filter is disabled (CONFIG[1:0] = 00). The signal is limited to 2 transitions per 130 PCLKs.
PCLK	5	O, LVC MOS	Pixel Clock Output In power-down (PDB = 0), output is controlled by the OSS_SEL pin (See Table 8). Strobe edge set by RFB function.
LOCK	32	O, LVC MOS	LOCK Status Output LOCK = 1, PLL is Locked, outputs are active LOCK = 0, PLL is unlocked, RGB[7:0], HS, VS, DE and PCLK output states are controlled by OSS_SEL (See Table 8). May be used as Link Status or to flag when Video Data is active (ON/OFF).
PASS	42	O, LVC MOS	PASS Output (BIST Mode) PASS = 1, error free transmission PASS = 0, one or more errors were detected in the received payload Route to test point for monitoring, or leave open if unused.
<b>Control and Configuration — STRAP PINS</b>			
For a High State, use a 10 kΩ pull up to V <sub>DDIO</sub> ; for a Low State, the IO includes an internal pull down. The STRAP pins are read upon power-up and set device configuration. Pin Number listed along with shared RGB Output name in square brackets.			
CONFIG[1:0]	10 [B6], 9 [B7]	STRAP I, LVC MOS w/ pull-down	Operating Modes — Pin or Register Control These pins determine the DS90UR906's operating mode and interfacing device. CONFIG[1:0] = 00: Interfacing to DS90UR905, Control Signal Filter DISABLED CONFIG[1:0] = 01: Interfacing to DS90UR905, Control Signal Filter ENABLED CONFIG[1:0] = 10: Interfacing to DS90UR241 CONFIG[1:0] = 11: Interfacing to DS90C241
LF_MODE	12 [B4]	STRAP I, LVC MOS w/ pull-down	SSCG Low Frequency Mode — Pin or Register Control Only required when SSCG is enabled, otherwise LF_MODE condition is a DON'T CARE (X). LF_MODE = 1, SSCG in low frequency mode (PCLK = 5-20 MHz) LF_MODE = 0, SSCG in high frequency mode (PCLK = 20-65 MHz)
OS_PCLK	11 [B5]	STRAP I, LVC MOS w/ pull-down	PCLK Output Slew Select — Pin or Register Control OS_PCLK = 1, increased PCLK slew OS_PCLK = 0, normal (default)
OS_DATA	14 [B3]	STRAP I, LVC MOS w/ pull-down	Data Output Slew Select — Pin or Register Control OS_DATA = 1, increased DATA slew OS_DATA = 0, normal (default)

(1) NOTE: 1 = HIGH, 0 = LOW.



**DS90UR906Q Deserializer Pin Functions<sup>(1)</sup> (continued)**

Pin Name	Pin #	I/O, Type	Description
OP_LOW	42 PASS	STRAP I, LVCMOS w/ pull-down	Outputs held Low when LOCK = 1 — Pin or Register Control NOTE: IT IS NOT RECOMMENDED TO USE ANY OTHER STRAP OPTIONS WITH THIS STRAP FUNCTION OP_LOW = 1: all outputs are held LOW during power up until released by programming OP_LOW release/set register HIGH NOTE: Before the device is powered up, the outputs are in tri-state. See <a href="#">Figure 26</a> and <a href="#">Figure 27</a> . OP_LOW = 0: all outputs toggle normally as soon as LOCK goes HIGH (default).
OSS_SEL	17 [B2]	STRAP I, LVCMOS w/ pull-down	Output Sleep State Select — Pin or Register Control NOTE: OSS_SEL STRAP CANNOT BE USED IF OP_LOW = 1 OSS_SEL is used in conjunction with PDB to determine the state of the outputs in Power Down (Sleep). (See <a href="#">Table 8</a> ).
RFB	18 [B1]	STRAP I, LVCMOS w/ pull-down	Pixel Clock Output Strobe Edge Select — Pin or Register Control RFB = 1, parallel interface data and control signals are strobed on the rising clock edge. RFB = 0, parallel interface data and control signals are strobed on the falling clock edge.
EQ[3:0]	20 [G7], 21 [G6], 22 [G5], 23 [G4]	STRAP I, LVCMOS w/ pull-down	Receiver Input Equalization — Pin or Register Control (See <a href="#">Table 5</a> ).
OSC_SEL[2:0]	26 [G2], 27 [G1], 28 [G0]	STRAP I, LVCMOS w/ pull-down	Oscillator Select — Pin or Register Control (See <a href="#">Table 9</a> and <a href="#">Table 10</a> ).
SSC[3:0]	34 [R6], 35 [R5], 36 [R4], 37 [R3]	STRAP I, LVCMOS w/ pull-down	Spread Spectrum Clock Generation (SSCG) Range Select — Pin or Register Control (See <a href="#">Table 6</a> and <a href="#">Table 7</a> ).
MAP_SEL[1:0]	40 [R1], 41 [R0]	STRAP I, LVCMOS w/ pull-down	Bit Mapping Backward Compatibility / DS90UR241 Options — Pin or Register Control Normal setting to b'00. See ( <a href="#">Table 11</a> ).
<b>Control and Configuration</b>			
PDB	59	I, LVCMOS w/ pull-down	Power Down Mode Input PDB = 1, Des is enabled (normal operation). Refer to “ <a href="#">POWER UP REQUIREMENTS AND PDB PIN</a> ” in the Applications Information Section. PDB = 0, Des is in power-down. When the Des is in the power-down state, the LVCMOS output state is determined by <a href="#">Table 8</a> . Control Registers are <b>RESET</b> .
ID[x]	56	I, Analog	Serial Control Bus Device ID Address Select — Optional Resistor to Ground and 10 kΩ pull-up to 1.8V rail. (See <a href="#">Table 12</a> ).
SCL	3	I, LVCMOS	Serial Control Bus Clock Input - Optional SCL requires an external pull-up resistor to V <sub>DDIO</sub> .
SDA	2	I/O, LVCMOS Open Drain	Serial Control Bus Data Input / Output - Optional SDA requires an external pull-up resistor to V <sub>DDIO</sub> .
BISTEN	44	I, LVCMOS w/ pull-down	BIST Enable Input — Optional BISTEN = 1, BIST is enabled BISTEN = 0, BIST is disabled
RES	47	I, LVCMOS w/ pull-down	<b>Reserved</b> - tie LOW
NC	1, 15, 16, 30, 31, 45, 46, 60		Not Connected Leave pin open (float)

**DS90UR906Q Deserializer Pin Functions<sup>(1)</sup> (continued)**

Pin Name	Pin #	I/O, Type	Description
<b>FPD-Link II Serial Interface</b>			
RIN+	49	I, LVDS	True Input. The input must be AC Coupled with a 100 nF capacitor.
RIN-	50	I, LVDS	Inverting Input. The input must be AC Coupled with a 100 nF capacitor.
CMF	51	I, Analog	Common-Mode Filter VCM center-tap is a virtual ground which may be ac-coupled to ground to increase receiver common mode noise immunity. Recommended value is 0.1µF or higher.
CMLOUTP	52	O, LVDS	Test Monitor Pin — EQ Waveform NC or connect to test point. Requires Serial Bus Control to enable.
CMLOUTN	53	O, LVDS	Test Monitor Pin — EQ Waveform NC or connect to test point. Requires Serial Bus Control to enable.
<b>Power and Ground<sup>(2)</sup></b>			
VDDL	29	Power	Logic Power, 1.8 V ±5%
VDDIR	48	Power	Input Power, 1.8 V ±5%
VDDR	43, 55	Power	RX High Speed Logic Power, 1.8 V ±5%
VDDSC	4, 58	Power	SSCG Power, 1.8 V ±5%
VDDPR	57	Power	PLL Power, 1.8 V ±5%
VDDCMLO	54	Power	RX High Speed Logic Power, 1.8 V ±5%
VDDIO	13, 24, 38	Power	LVC MOS I/O Power, <b>1.8 V ±5% OR 3.3 V ±10%</b> (V <sub>DDIO</sub> )
GND	DAP	Ground	DAP is the large metal contact at the bottom side, located at the center of the WQFN package. <b>Connected to the ground plane (GND)</b> with at least 9 vias.

- (2) The VDD (V<sub>DDn</sub> and V<sub>DDIO</sub>) supply ramp should be faster than 1.5 ms with a monotonic rise. If slower than 1.5 ms then a capacitor on the PDB pin is needed to ensure PDB arrives after all the VDD have settled to the recommended operating voltage.



These devices have limited built-in ESD protection. The leads should be shorted together or the device placed in conductive foam during storage or handling to prevent electrostatic damage to the MOS gates.

### Absolute Maximum Ratings<sup>(1)(2)(3)</sup>

Supply Voltage – $V_{DDn}$ (1.8V)		–0.3V to +2.5V
Supply Voltage – $V_{DDIO}$		–0.3V to +4.0V
LVCMOS I/O Voltage		–0.3V to +(VDDIO + 0.3V)
Receiver Input Voltage		–0.3V to (VDD + 0.3V)
Driver Output Voltage		–0.3V to (VDD + 0.3V)
Junction Temperature		+150°C
Storage Temperature		–65°C to +150°C
48L RHS Package	Maximum Power Dissipation Capacity at 25°C	215mW
	Derate above 25°C	1/θ <sub>JA</sub> mW / °C
	θ <sub>JA</sub> (based on 9 thermal vias)	27.1 °C/W
	θ <sub>JC</sub> (based on 9 thermal vias)	4.5 °C/W
60L NKB Package	Maximum Power Dissipation Capacity at 25°C	470mW
	Derate above 25°C	1/θ <sub>JA</sub> mW / °C
	θ <sub>JA</sub> (based on 9 thermal vias)	24.6 °C/W
	θ <sub>JC</sub> (based on 9 thermal vias)	2.8 °C/W
ESD Rating (HBM)		≥±8 kV
ESD Rating (CDM)		≥±1 kV
ESD Rating (MM)		≥±250 V
ESD Rating (ISO10605), R <sub>D</sub> = 2kΩ, C <sub>S</sub> = 150pF or R <sub>D</sub> = 2kΩ, C <sub>S</sub> = 330pF or R <sub>D</sub> = 330Ω, C <sub>S</sub> = 150pF	Air Discharge (D <sub>OUT+</sub> , D <sub>OUT–</sub> )	≥±30 kV
	Contact Discharge (D <sub>OUT+</sub> , D <sub>OUT–</sub> )	≥±10 kV
	Air Discharge (R <sub>IN+</sub> , R <sub>IN–</sub> )	≥±30 kV
	Contact Discharge (R <sub>IN+</sub> , R <sub>IN–</sub> )	≥±10 kV
ESD Rating (ISO10605), R <sub>D</sub> = 330Ω, C <sub>S</sub> = 330pF	Air Discharge (D <sub>OUT+</sub> , D <sub>OUT–</sub> )	≥±15 kV
	Contact Discharge (D <sub>OUT+</sub> , D <sub>OUT–</sub> )	≥±10 kV
	Air Discharge (R <sub>IN+</sub> , R <sub>IN–</sub> )	≥±15 kV
	Contact Discharge (R <sub>IN+</sub> , R <sub>IN–</sub> )	≥±10 kV
ESD Rating (IEC 61000-4-2), R <sub>D</sub> = 330Ω, C <sub>S</sub> = 150pF	Air Discharge (D <sub>OUT+</sub> , D <sub>OUT–</sub> )	≥±25 kV
	Contact Discharge (D <sub>OUT+</sub> , D <sub>OUT–</sub> )	≥±8 kV
	Air Discharge (R <sub>IN+</sub> , R <sub>IN–</sub> )	≥±25 kV
	Contact Discharge (R <sub>IN+</sub> , R <sub>IN–</sub> )	≥±8 kV

- (1) “Absolute Maximum Ratings” indicate limits beyond which damage to the device may occur, including inoperability and degradation of device reliability and/or performance. Functional operation of the device and/or non-degradation at the Absolute Maximum Ratings or other conditions beyond those indicated in the [Recommended Operating Conditions](#) is not implied. The Recommended Operating Conditions indicate conditions at which the device is functional and the device should not be operated beyond such conditions.
- (2) If Military/Aerospace specified devices are required, please contact the Texas Instruments Sales Office/ Distributors for availability and specifications.
- (3) For soldering specifications see product folder at [www.ti.com](http://www.ti.com) and <http://www.ti.com/lit/an/snoa549c/snoa549c.pdf>

## Recommended Operating Conditions

	Min	Nom	Max	Units
Supply Voltage ( $V_{DDn}$ )	1.71	1.8	1.89	V
LVC MOS Supply Voltage ( $V_{DDIO}$ )	1.71	1.8	1.89	
<b>OR</b> LVC MOS Supply Voltage ( $V_{DDIO}$ )	3.0	3.3	3.6	
Operating Free Air Temperature ( $T_A$ )	-40	+25	+105	°C
PCLK Clock Frequency	5		65	MHz
Supply Noise <sup>(1)</sup>			50	mV <sub>P-P</sub>

- (1) Supply noise testing was done with minimum capacitors on the PCB. A sinusoidal signal is AC coupled to the  $V_{DDn}$  (1.8V) supply with amplitude = 100 mVp-p measured at the device  $V_{DDn}$  pins. Bit error rate testing of input to the Ser and output of the Des with 10 meter cable shows no error when the noise frequency on the Ser is less than 750 kHz. The Des on the other hand shows no error when the noise frequency is less than 400 kHz.

## Serializer DC Electrical Characteristics

Over recommended operating supply and temperature ranges unless otherwise specified.<sup>(1)(2)(3)</sup>

Symbol	Parameter	Conditions		Pin/Freq	Min	Typ	Max	Units	
LVCMOS INPUT DC SPECIFICATIONS									
V <sub>IH</sub>	High Level Input Voltage	V <sub>DDIO</sub> = 3.0 to 3.6V		R[7:0], G[7:0], B[7:0], HS, VS, DE, PCLK, PDB, VODSEL, RFB, CONFIG[1:0],BIS TEN	2.2		V <sub>DDIO</sub>	V	
		V <sub>DDIO</sub> = 1.71 to 1.89V			0.65* V <sub>DDIO</sub>		V <sub>DDIO</sub>	V	
V <sub>IL</sub>	Low Level Input Voltage	V <sub>DDIO</sub> = 3.0 to 3.6V			GND		0.8	V	
		V <sub>DDIO</sub> = 1.71 to 1.89V			GND		0.35* V <sub>DDIO</sub>	V	
I <sub>IN</sub>	Input Current	V <sub>IN</sub> = 0V or V <sub>DDIO</sub>	V <sub>DDIO</sub> = 3.0 to 3.6V		-15	±1	+15	µA	
			V <sub>DDIO</sub> = 1.7 to 1.89V		-15	±1	+15	µA	
LVDS DRIVER DC SPECIFICATIONS									
V <sub>OD</sub>	Differential Output Voltage	R <sub>L</sub> = 100Ω, De-emph = disabled, <a href="#">Figure 2</a>	VODSEL = 0	DOUT+, DOUT-	±205	±280	±355	mV	
			VODSEL = 1		±320	±420	±520		
V <sub>ODp-p</sub>	Differential Output Voltage (DOUT+) – (DOUT-)			VODSEL = 0	DOUT+, DOUT-		560		mVp-p
				VODSEL = 1			840		
ΔV <sub>OD</sub>	Output Voltage Unbalance	R <sub>L</sub> = 100Ω, De-emph = disabled, VODSEL = L				1	50	mV	
V <sub>OS</sub>	Offset Voltage – Single-ended At TP A & B, <a href="#">Figure 1</a>	R <sub>L</sub> = 100Ω, De-emph = disabled	VODSEL = 0	DOUT+, DOUT-		1.65		V	
			VODSEL = 1			1.575			
ΔV <sub>OS</sub>	Offset Voltage Unbalance Single-ended At TP A & B, <a href="#">Figure 1</a>	R <sub>L</sub> = 100Ω, De-emph = disabled				1		mV	
I <sub>OS</sub>	Output Short Circuit Current	DOUT+/- = 0V, De-emph = disabled	VODSEL = 0	DOUT+, DOUT-		-36		mA	
R <sub>T</sub>	Internal Termination Resistor				80	100	120	Ω	

- (1) The Electrical Characteristics tables list ensured specifications under the listed [Recommended Operating Conditions](#) except as otherwise modified or specified by the Electrical Characteristics Conditions and/or Notes. Typical specifications are estimations only and are not ensured.
- (2) Typical values represent most likely parametric norms at  $V_{DD} = 3.3V$ ,  $T_A = +25$  degC, and at the [Recommended Operating Conditions](#) at the time of product characterization and are not ensured.
- (3) Current into device pins is defined as positive. Current out of a device pin is defined as negative. Voltages are referenced to ground except VOD,  $\Delta V_{OD}$ ,  $V_{TH}$  and  $V_{TL}$  which are differential voltages.

## Serializer DC Electrical Characteristics (continued)

Over recommended operating supply and temperature ranges unless otherwise specified.<sup>(1)(2)(3)</sup>

Symbol	Parameter	Conditions	Pin/Freq	Min	Typ	Max	Units
<b>SUPPLY CURRENT</b>							
$I_{DDT1}$	Serializer Supply Current (includes load current) $R_L = 100\Omega$ , $f = 65\text{MHz}$	Checker Board Pattern, De-emph = 3K $\Omega$ , VODSEL = H, <a href="#">Figure 9</a>	$V_{DD} = 1.89\text{V}$	All $V_{DD}$ pins		75	85
$I_{DDIOT1}$			$V_{DDIO} = 1.89\text{V}$	$V_{DDIO}$		3	5
$I_{DDT2}$			$V_{DDIO} = 3.6\text{V}$			11	15
$I_{DDIOT2}$		Checker Board Pattern, De-emph = 6K $\Omega$ , VODSEL = L, <a href="#">Figure 9</a>	$V_{DD} = 1.89\text{V}$	All $V_{DD}$ pins		65	75
			$V_{DDIO} = 1.89\text{V}$	$V_{DDIO}$		3	5
			$V_{DDIO} = 3.6\text{V}$			11	15
$I_{DDZ}$	Serializer Supply Current Power-down	PDB = 0V, (All other LVC MOS Inputs = 0V)	$V_{DD} = 1.89\text{V}$	All $V_{DD}$ pins		40	1000
$I_{DDIOZ}$			$V_{DDIO} = 1.89\text{V}$	$V_{DDIO}$		5	10
			$V_{DDIO} = 3.6\text{V}$			10	20

## Deserializer DC Electrical Characteristics

Over recommended operating supply and temperature ranges unless otherwise specified.

Symbol	Parameter	Conditions	Pin/Freq.	Min	Typ	Max	Units
<b>3.3 V I/O LVC MOS DC SPECIFICATIONS – <math>V_{DDIO} = 3.0</math> to 3.6V</b>							
$V_{IH}$	High Level Input Voltage		PDB, BISTEN	2.2		$V_{DDIO}$	V
$V_{IL}$	Low Level Input Voltage			GND		0.8	V
$I_{IN}$	Input Current	$V_{IN} = 0\text{V}$ or $V_{DDIO}$		-15	$\pm 1$	+15	$\mu\text{A}$
$V_{OH}$	High Level Output Voltage	$I_{OH} = -2\text{mA}$ , OS_PCLK/DATA = L	R[7:0], G[7:0], B[7:0], HS, VS, DE, PCLK, LOCK, PASS	2.4	$V_{DDIO}$		V
$V_{OL}$	Low Level Output Voltage	$I_{OL} = +2\text{mA}$ , OS_PCLK/DATA = L	R[7:0], G[7:0], B[7:0], HS, VS, DE, PCLK, LOCK, PASS		GND	0.4	V
$I_{OS}$	Output Short Circuit Current	$V_{DDIO} = 3.3\text{V}$ $V_{OUT} = 0\text{V}$ , OS_PCLK/DATA = L/H	PCLK		36		mA
	Output Short Circuit Current	$V_{DDIO} = 3.3\text{V}$ $V_{OUT} = 0\text{V}$ , OS_PCLK/DATA = L/H	Des Outputs		37		mA
$I_{OZ}$	TRI-STATE Output Current	PDB = 0V, OSS_SEL = 0V, $V_{OUT} = \text{H}$	Outputs	-15		+15	$\mu\text{A}$
<b>1.8 V I/O LVC MOS DC SPECIFICATIONS – <math>V_{DDIO} = 1.71</math> to 1.89V</b>							
$V_{IH}$	High Level Input Voltage		PDB, BISTEN	1.235		$V_{DDIO}$	V
$V_{IL}$	Low Level Input Voltage			GND		0.595	V
$I_{IN}$	Input Current	$V_{IN} = 0\text{V}$ or $V_{DDIO}$		-15	$\pm 1$	+15	$\mu\text{A}$
$V_{OH}$	High Level Output Voltage	$I_{OH} = -2\text{mA}$ , OS_PCLK/DATA = L/H	R[7:0], G[7:0], B[7:0], HS, VS, DE, PCLK, LOCK, PASS	$V_{DDIO} - 0.45$	$V_{DDIO}$		V
$V_{OL}$	Low Level Output Voltage	$I_{OL} = +2\text{mA}$ , OS_PCLK/DATA = L/H		GND		0.45	V
$I_{OS}$	Output Short Circuit Current	$V_{DDIO} = 1.8\text{V}$ $V_{OUT} = 0\text{V}$ , OS_PCLK/DATA = L/H	PCLK		18		mA
		$V_{DDIO} = 1.8\text{V}$ $V_{OUT} = 0\text{V}$ , OS_PCLK/DATA = L/H	DATA		18		mA
$I_{OZ}$	TRI-STATE Output Current	PDB = 0V, OSS_SEL = 0V, $V_{OUT} = 0\text{V}$ or $V_{DDIO}$	Outputs	-15		+15	$\mu\text{A}$

## Deserializer DC Electrical Characteristics (continued)

Over recommended operating supply and temperature ranges unless otherwise specified.

Symbol	Parameter	Conditions	Pin/Freq.	Min	Typ	Max	Units
<b>LVDS RECEIVER DC SPECIFICATIONS</b>							
$V_{TH}$	Differential Input Threshold High Voltage	$V_{CM} = +1.2V$ (Internal $V_{BIAS}$ )	RIN+, RIN-	+50			mV
$V_{TL}$	Differential Input Threshold Low Voltage			-50			mV
$V_{CM}$	Common Mode Voltage, Internal $V_{BIAS}$				1.2		V
$I_{IN}$	Input Current	$V_{IN} = 0V$ or $V_{DDIO}$		-15		+15	$\mu A$
$R_T$	Internal Termination Resistor		RIN+, RIN-	80	100	120	$\Omega$
<b>CMLOUTP/N DRIVER OUTPUT DC SPECIFICATIONS – EQ TEST PORT</b>							
$V_{OD}$	Differential Output Voltage	$R_L = 100\Omega$ ,	CMLOUTP, CMLOUTN		542		mV
$V_{OS}$	Offset Voltage Single-ended	$R_L = 100\Omega$			1.4		V
$R_T$	Internal Termination Resistor		CMLOUTP, CMLOUTN	80	100	120	$\Omega$
<b>SUPPLY CURRENT</b>							
$I_{DD1}$	Deserializer Supply Current (includes load current)	Checker Board Pattern, OS_PCLK/DATA = H, EQ = 001, SSCG=ON, CMLOUTP/N = enabled, $C_L = 4pF$ , <a href="#">Figure 9</a>	All $V_{DD}$ pins		93	110	mA
$I_{DDIO1}$			$V_{DDIO}$		33	45	mA
					62	75	mA
$I_{DDZ}$	Deserializer Supply Current Power Down	PDB = 0V, All other LVCMOS Inputs = 0V	All $V_{DD}$ pins		40	3000	$\mu A$
$I_{DDIOZ}$			$V_{DDIO}$		5	50	$\mu A$
					10	100	$\mu A$

## Recommended Serializer Timing for PCLK

Over recommended operating supply and temperature ranges unless otherwise specified.

Symbol	Parameter	Conditions	Min	Typ	Max	Units
$t_{TCP}$	Transmit Input PCLK Period	5 MHz to 65 MHz, <a href="#">Figure 4</a>	15.38	T	200	ns
$t_{TCIH}$	Transmit Input PCLK High Time		0.4T	0.5T	0.6T	ns
$t_{TCIL}$	Transmit Input PCLK Low Time		0.4T	0.5T	0.6T	ns
$t_{CLKT}$	PCLK Input Transition Time		0.5		2.4	ns
$SSC_{IN}$	PCLK Input – Spread Spectrum at PCLK = 65 MHz	fmod			35	kHz
		fdev			$\pm 2$	%

## Serializer Switching Characteristics

Over recommended operating supply and temperature ranges unless otherwise specified.

Symbol	Parameter	Conditions	Min	Typ	Max	Units
$t_{LHT}$	Ser Output Low-to-High Transition Time, <a href="#">Figure 3</a>	$R_L = 100\Omega$ , De-emphasis = disabled, VODSEL = 0		200		ps
		$R_L = 100\Omega$ , De-emphasis = disabled, VODSEL = 1		200		ps
$t_{HLT}$	Ser Output High-to-Low Transition Time, <a href="#">Figure 3</a>	$R_L = 100\Omega$ , De-emphasis = disabled, VODSEL = 0		200		ps
		$R_L = 100\Omega$ , De-emphasis = disabled, VODSEL = 1		200		ps
$t_{DIS}$	Input Data - Setup Time, <a href="#">Figure 4</a>	RGB[7:0], HS, VS, DE to PCLK	2			ns
$t_{DIH}$	Input Data - Hold Time, <a href="#">Figure 4</a>	PCLK to RGB[7:0], HS, VS, DE	2			ns
$t_{XZD}$	Ser Output Active to OFF Delay, <a href="#">Figure 6</a> <sup>(1)</sup>			8	15	ns
$t_{PLD}$ <sup>(2)</sup>	Serializer PLL Lock Time, <a href="#">Figure 5</a> <sup>(1)(3)</sup>	$R_L = 100\Omega$		1.4	10	ms
$t_{SD}$	Serializer Delay - Latency, <a href="#">Figure 7</a> <sup>(1)</sup>	$R_L = 100\Omega$		144 * T	145 * T	ns
$t_{DJIT}$	Ser Output Total Jitter, <a href="#">Figure 8</a>	$R_L = 100\Omega$ , De-Emph = disabled, RANDOM pattern, PCLK = 65 MHz		0.28		UI <sup>(4)</sup>
		$R_L = 100\Omega$ , De-Emph = disabled, RANDOM pattern, PCLK = 43 MHz		0.27		UI
		$R_L = 100\Omega$ , De-Emph = disabled, RANDOM pattern, PCLK = 5 MHz		0.35		UI
$\lambda_{STXBW}$	Serializer Jitter Transfer Function -3 dB Bandwidth	PCLK = 65 MHz		3		MHz
		PCLK = 43 MHz		2.3		MHz
		PCLK = 20 MHz		1.3		MHz
		PCLK = 5 MHz		650		kHz
$\delta_{STX}$	Serializer Jitter Transfer Function Peaking	PCLK = 65 MHz		0.838		dB
		PCLK = 43 MHz		0.825		dB
		PCLK = 20 MHz		0.826		dB
		PCLK = 5 MHz		0.278		dB

(1) Specification is ensured by characterization and is not tested in production.

(2)  $t_{PLD}$  is the time required by the serializer to obtain lock when exiting power-down state with an active PCLK.

(3) When the Serializer output is at TRI-STATE the Deserializer will lose PLL lock. Resynchronization / Relock must occur before data transfer require  $t_{PLD}$

(4) UI – Unit Interval is equivalent to one serialized data bit width ( $1UI = 1 / [28 * PCLK]$ ). The UI scales with PCLK frequency.

## Deserializer Switching Characteristics

Over recommended operating supply and temperature ranges unless otherwise specified.

Symbol	Parameter	Conditions	Pin/Freq.	Min	Typ	Max	Units
t <sub>RCP</sub>	PCLK Output Period	t <sub>RCP</sub> = t <sub>TCP</sub>	PCLK	15.38	T	200	ns
t <sub>RDC</sub>	PCLK Output Duty Cycle	SSCG=OFF, 5–65MHz	PCLK	43	50	57	%
		SSCG=ON, 5–20MHz		35	59	65	%
		SSCG=ON, 20–65MHz		40	53	60	%
t <sub>CLH</sub>	LVCMOS Low-to-High Transition Time, <a href="#">Figure 10</a>	V <sub>DDIO</sub> = 1.8V, C <sub>L</sub> = 4 pF	PCLK/RGB[7:0], HS, VS, DE		2.1		ns
		V <sub>DDIO</sub> = 3.3V, C <sub>L</sub> = 4 pF			2.0		ns
t <sub>CHL</sub>	LVCMOS High-to-Low Transition Time, <a href="#">Figure 10</a>	V <sub>DDIO</sub> = 1.8V C <sub>L</sub> = 4 pF, OS_PCLK/DATA = L	PCLK/RGB[7:0], HS, VS, DE		1.6		ns
		V <sub>DDIO</sub> = 3.3V C <sub>L</sub> = 4 pF, OS_PCLK/DATA = H			1.5		ns
t <sub>ROS</sub>	Data Valid before PCLK – Set Up Time, <a href="#">Figure 14</a>	V <sub>DDIO</sub> = 1.71 to 1.89V or 3.0 to 3.6V C <sub>L</sub> = 4pF (lumped load)	RGB[7:0], HS, VS, DE	0.27	0.45		T
t <sub>ROH</sub>	Data Valid after PCLK – Hold Time, <a href="#">Figure 14</a>	V <sub>DDIO</sub> = 1.71 to 1.89V or 3.0 to 3.6V C <sub>L</sub> = 4pF (lumped load)	RGB[7:0], HS, VS, DE	0.40	0.55		T
t <sub>DDL</sub> <sup>(1)</sup>	Deserializer Lock Time, <a href="#">Figure 13</a>	SSC[3:0] = 0000 (OFF) <sup>(2)</sup>	PCLK = 5MHz		3		ms
		SSC[3:0] = 0000 (OFF) <sup>(2)</sup>	PCLK = 65 MHz		4		ms
		SSC[3:0] = ON <sup>(2)</sup>	PCLK = 5MHz		30		ms
		SSC[3:0] = ON <sup>(2)</sup>	PCLK = 65 MHz		6		ms
t <sub>DD</sub>	Des Delay - Latency, <a href="#">Figure 11</a>	SSC[3:0] = 0000 (OFF) <sup>(2)</sup>			139*T	140*T	ns
t <sub>DPJ</sub>	Des Period Jitter	SSC[3:0] = OFF <sup>(3)(4)(5)</sup>	PCLK = 5MHz		975	1700	ps
			PCLK = 10MHz		500	1000	ps
			PCLK = 65 MHz		550	1250	ps
t <sub>DCCJ</sub>	Des Cycle-to-Cycle Jitter	SSC[3:0] = OFF <sup>(4)(6)(5)</sup>	PCLK = 5MHz		675	1150	ps
			PCLK = 10MHz		375	900	ps
			PCLK = 65 MHz		500	1150	ps
t <sub>IJT</sub>	Des Input Jitter Tolerance, <a href="#">Figure 16</a>	EQ = OFF, SSCG = OFF, PCLK = 65MHz	for jitter freq < 2MHz		0.9		UI
			for jitter freq > 6MHz		0.5		UI
BIST Mode							
t <sub>PASS</sub>	BIST PASS Valid Time, BISTEN = 1, <a href="#">Figure 17</a>				1	10	us
SSCG Mode							
f <sub>DEV</sub>	Spread Spectrum Clocking Deviation Frequency	Under typical conditions	PCLK = 5 to 65 MHz, SSC[3:0] = ON	±0.5		±2	%
f <sub>MOD</sub>	Spread Spectrum Clocking Modulation Frequency	Under typical conditions	PCLK = 5 to 65 MHz, SSC[3:0] = ON	8		100	kHz

(1)  $t_{DDL T}$  is the time required by the deserializer to obtain lock when exiting power-down state with an active PCLK.

(2)  $t_{PLD}$  is the time required by the serializer to obtain lock when exiting power-down state with an active PCLK.

(3)  $t_{DPJ}$  is the maximum amount the period is allowed to deviate over many samples.

(4) Specification is ensured by characterization and is not tested in production.

(5) Specification is ensured by design and is not tested in production.

(6)  $t_{DCCJ}$  is the maximum amount of jitter between adjacent clock cycles.



## Recommended Timing for the Serial Control Bus

Over 3.3V supply and temperature ranges unless otherwise specified.

Symbol	Parameter	Conditions	Min	Typ	Max	Units
$f_{SCL}$	SCL Clock Frequency	Standard Mode	>0		100	kHz
		Fast Mode	>0		400	kHz
$t_{LOW}$	SCL Low Period	Standard Mode	4.7			us
		Fast Mode	1.3			us
$t_{HIGH}$	SCL High Period	Standard Mode	4.0			us
		Fast Mode	0.6			us
$t_{HD;STA}$	Hold time for a start or a repeated start condition, <a href="#">Figure 18</a>	Standard Mode	4.0			us
		Fast Mode	0.6			us
$t_{SU;STA}$	Set Up time for a start or a repeated start condition, <a href="#">Figure 18</a>	Standard Mode	4.7			us
		Fast Mode	0.6			us
$t_{HD;DAT}$	Data Hold Time, <a href="#">Figure 18</a>	Standard Mode	0		3.45	us
		Fast Mode	0		0.9	us
$t_{SU;DAT}$	Data Set Up Time, <a href="#">Figure 18</a>	Standard Mode	250			ns
		Fast Mode	100			ns
$t_{SU;STO}$	Set Up Time for STOP Condition, <a href="#">Figure 18</a>	Standard Mode	4.0			us
		Fast Mode	0.6			us
$t_{BUF}$	Bus Free Time Between STOP and START, <a href="#">Figure 18</a>	Standard Mode	4.7			us
		Fast Mode	1.3			us
$t_r$	SCL & SDA Rise Time, <a href="#">Figure 18</a>	Standard Mode			1000	ns
		Fast Mode			300	ns
$t_f$	SCL & SDA Fall Time, <a href="#">Figure 18</a>	Standard Mode			300	ns
		Fast mode			300	ns

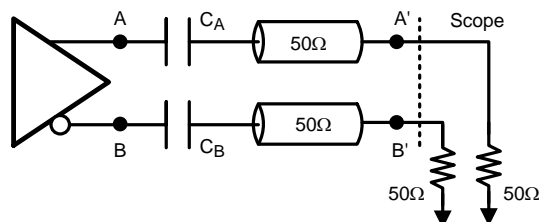
## DC and AC Serial Control Bus Characteristics

Over 3.3V supply and temperature ranges unless otherwise specified.

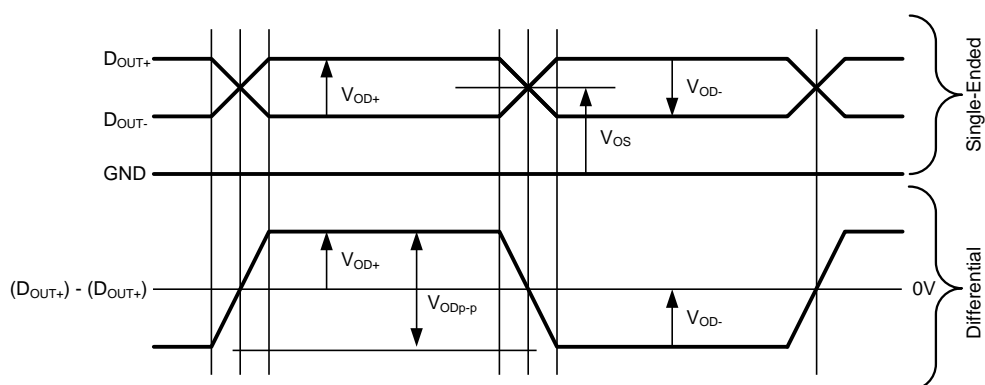
Symbol	Parameter	Conditions	Min	Typ	Max	Units
$V_{IH}$	Input High Level	SDA and SCL	2.2		$V_{DDIO}$	V
$V_{IL}$	Input Low Level Voltage	SDA and SCL	GND		0.8	V
$V_{HY}$	Input Hysteresis			>50		mV
$V_{OL}$	Output Low Level Voltage <sup>(1)</sup>	SDA, IOL = 1.25mA	0		0.4	V
$I_{in}$		SDA or SCL, $V_{in} = V_{DDIO}$ or GND	-15		+15	μA
$t_R$	SDA RiseTime – READ	SDA, RPU = 10kΩ, Cb ≤ 400pF		40		ns
$t_F$	SDA Fall Time – READ			25		ns
$t_{SU;DAT}$	Set Up Time — READ			520		ns
$t_{HD;DAT}$	Hold Up Time — READ			55		ns
$t_{SP}$	Input Filter			50		ns
$C_{in}$	Input Capacitance	SDA or SCL		<5		pF

(1) Specification is ensured by characterization and is not tested in production.

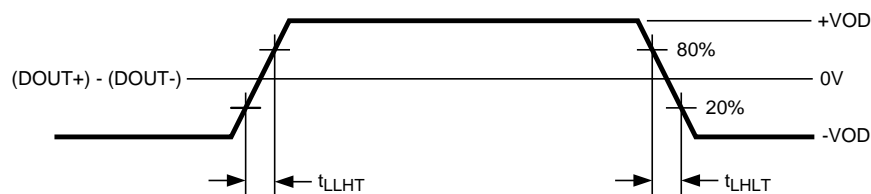
## AC Timing Diagrams and Test Circuits



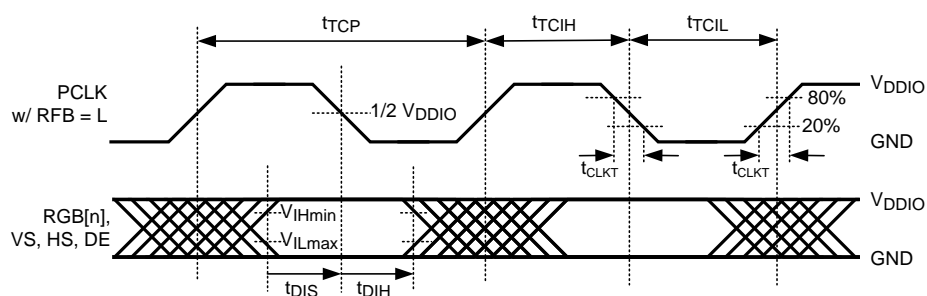
**Figure 1. Serializer Test Circuit**



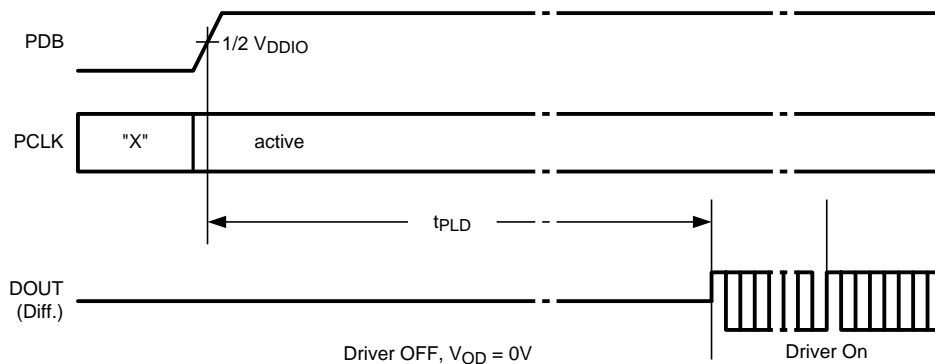
**Figure 2. Serializer Output Waveforms**



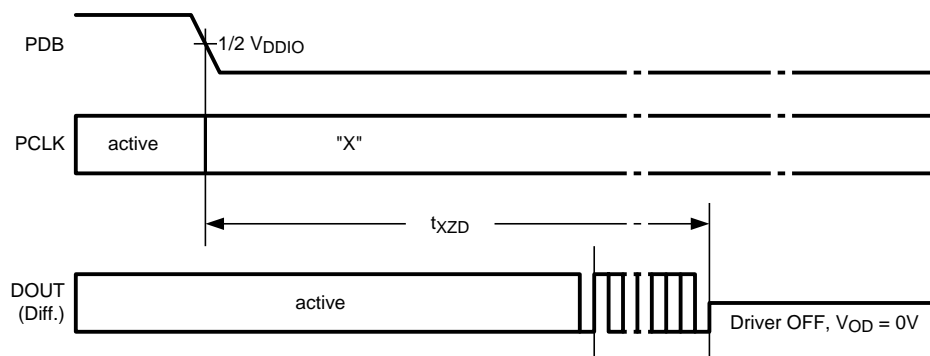
**Figure 3. Serializer Output Transition Times**



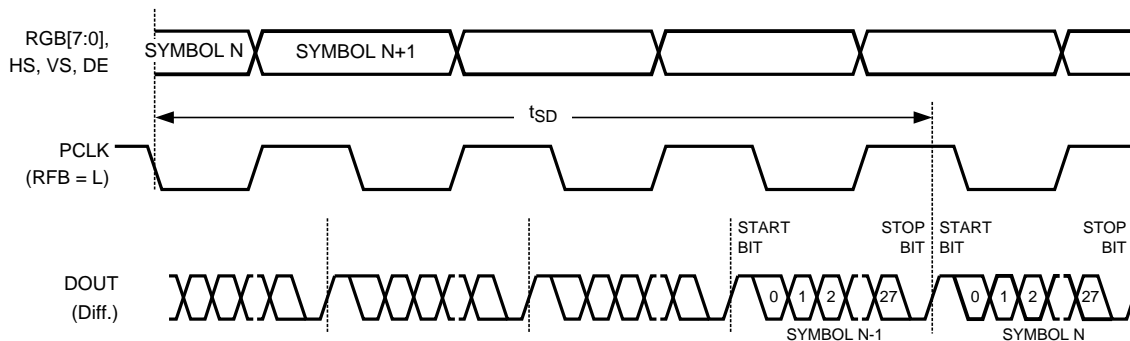
**Figure 4. Serializer Input PCLK Waveform and Set and Hold Times**



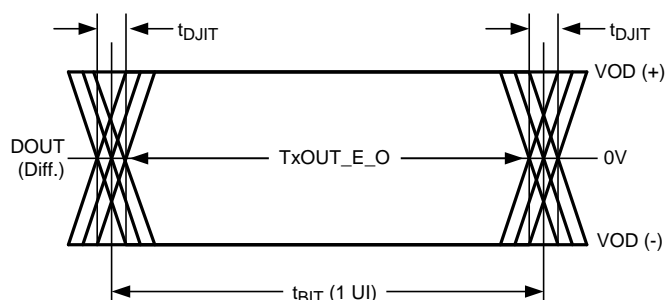
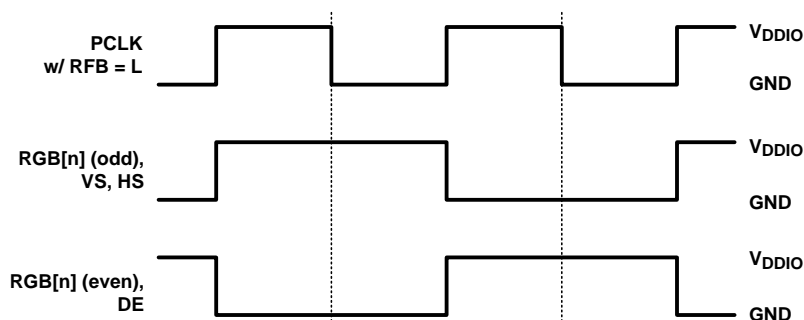
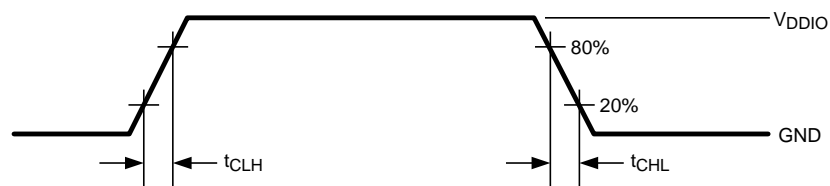
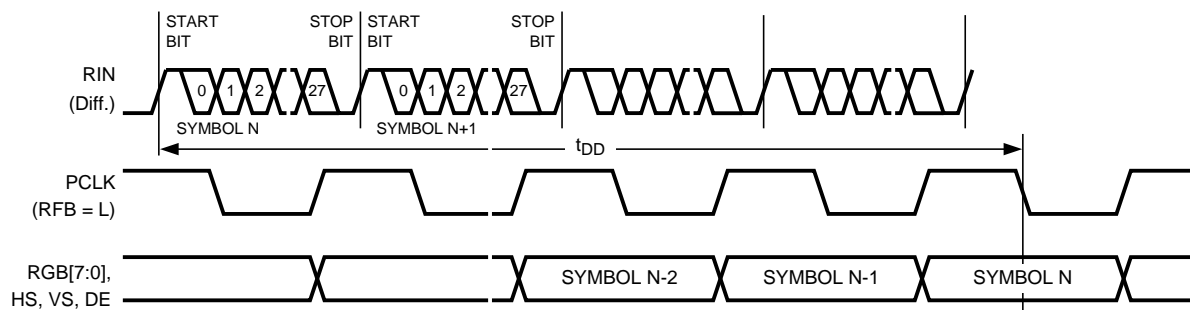
**Figure 5. Serializer Lock Time**



**Figure 6. Serializer Disable Time**



**Figure 7. Serializer Latency Delay**

**Figure 8. Serializer Output Jitter****Figure 9. Checkerboard Data Pattern****Figure 10. Deserializer LVCMOS Transition Times****Figure 11. Deserializer Delay – Latency**

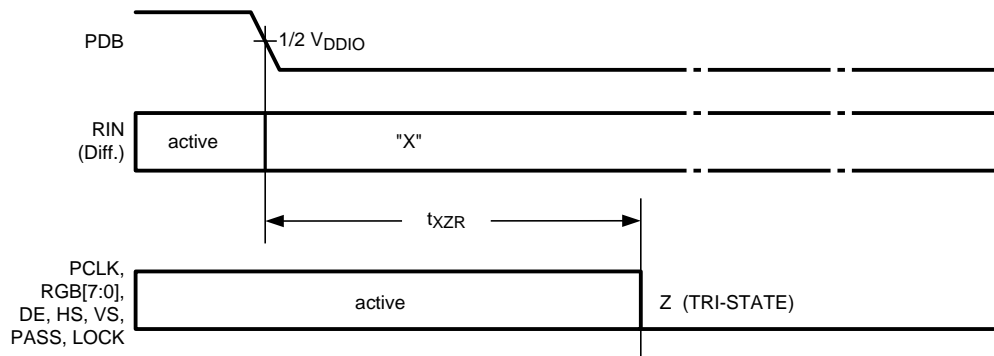


Figure 12. Deserializer Disable Time (OSS\_SEL = 0)

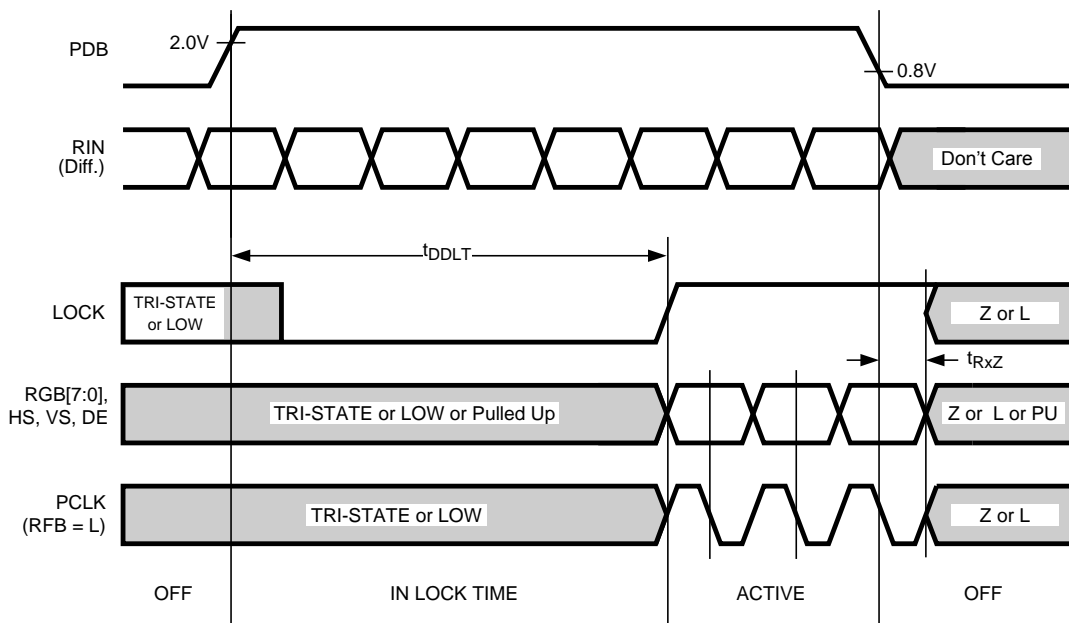


Figure 13. Deserializer PLL Lock Times and PDB TRI-STATE Delay

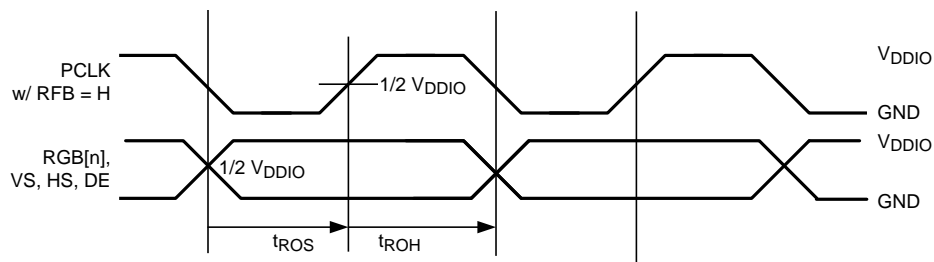
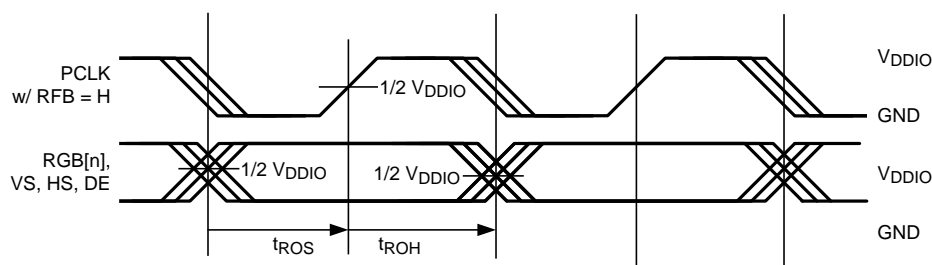
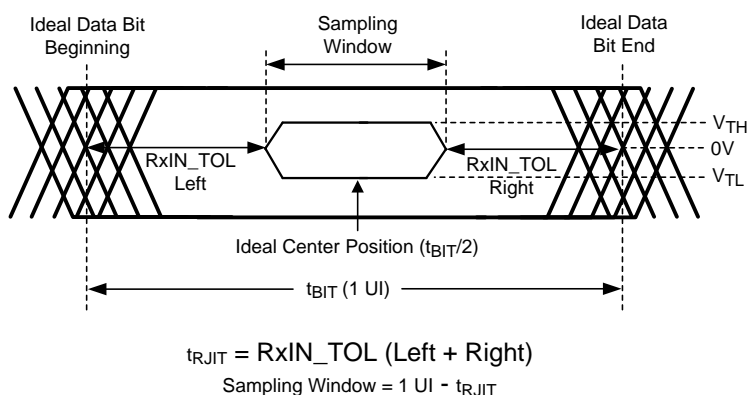


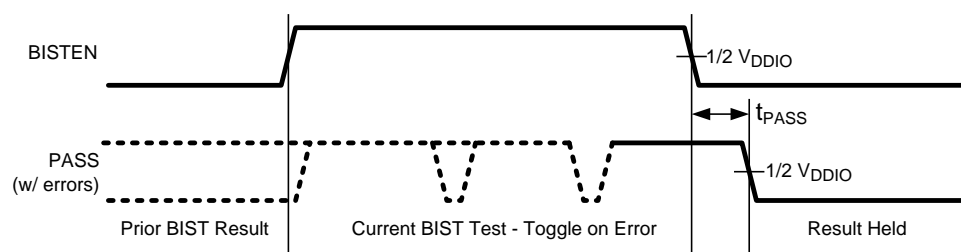
Figure 14. Deserializer Output Data Valid (Setup and Hold) Times with SSCG = Off



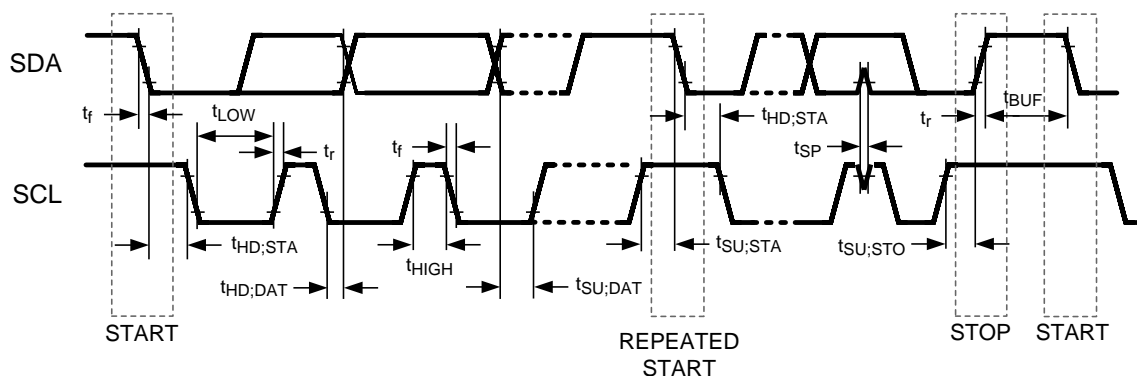
**Figure 15. Deserializer Output Data Valid (Setup and Hold) Times with SSCG = On**



### Figure 16. Receiver Input Jitter Tolerance



### Figure 17. BIST PASS Waveform



### Figure 18. Serial Control Bus Timing Diagram

## Functional Description

The DS90UR905Q / DS90UR906Q chipset transmits and receives 27-bits of data (24-high speed color bits and 3 low speed video control signals) over a single serial FPD-Link II pair operating at 140Mbps to 1.82Gbps. The serial stream also contains an embedded clock, video control signals and the DC-balance information which enhances signal quality and supports AC coupling. The pair is intended for use with each other but is backward compatible with previous generations of FPD-Link II as well.

The Des can attain lock to a data stream without the use of a separate reference clock source, which greatly simplifies system complexity and overall cost. The Des also synchronizes to the Ser regardless of the data pattern, delivering true automatic “plug and lock” performance. It can lock to the incoming serial stream without the need of special training patterns or sync characters. The Des recovers the clock and data by extracting the embedded clock information, validating and then deserializing the incoming data stream providing a parallel LVCMOS video bus to the display.

The DS90UR905Q / DS90UR906Q chipset can operate in 24-bit color depth (with VS,HS,DE encoded in the DCA bit) or in 18-bit color depth (with VS, HS, DE encoded in DCA or mapped into the high-speed data bits). In 18-bit color applications, the three video signals maybe sent encoded via the DCA bit (restrictions apply) or sent as “data bits” along with three additional general purpose signals.

[Block Diagrams](#) for the chipset are shown at the beginning of this datasheet.

## Data Transfer

The DS90UR905Q / DS90UR906Q chipset will transmit and receive a pixel of data in the following format: C1 and C0 represent the embedded clock in the serial stream. C1 is always HIGH and C0 is always LOW. b[23:0] contain the scrambled RGB data. DCB is the DC-Balanced control bit. DCB is used to minimize the short and long-term DC bias on the signal lines. This bit determines if the data is unmodified or inverted. DCA is used to validate data integrity in the embedded data stream and can also contain encoded control (VS,HS,DE). Both DCA and DCB coding schemes are generated by the Ser and decoded by the Des automatically. [Figure 19 illustrates](#)\* the serial stream per PCLK cycle. \*Note: The figure only illustrates the bits but does not actually represent the bit location as the bits are scrambled and balanced continuously.

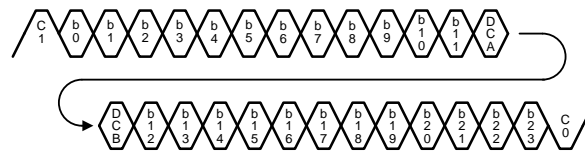


Figure 19. FPD-Link II Serial Stream (905/906)

## Ser & Des OPERATING MODES AND BACKWARD COMPATIBILITY (CONFIG[1:0])

The DS90UR905Q / DS90UR906Q chipset is also backward compatible with previous generations of FPD-Link II. Configuration modes are provided for backwards compatibility with the DS90C241 / DS90C124 FPD-Link II Generation 1, and also the DS90UR241 / DS90UR124 FPD-Link II Generation 2 chipset by setting the respective mode with the CONFIG[1:0] pins on the Ser or Des as shown in [Table 1](#) and [Table 2](#). The selection also determine whether the Video Control Signal filter feature is enabled or disabled in Normal mode. This feature may be controlled by pin or by Register.

Table 1. DS90UR905Q Ser Modes

CONFIG1	CONFIG0	Mode	Des Device
L	L	Normal Mode, Control Signal Filter disabled	DS90UR906Q
L	H	Normal Mode, Control Signal Filter enabled	DS90UR906Q
H	L	Backwards Compatible GEN2	DS90UR124, DS99R124
H	H	Backwards Compatible GEN1	DS90C124

**Table 2. DS90UR906Q Des Modes**

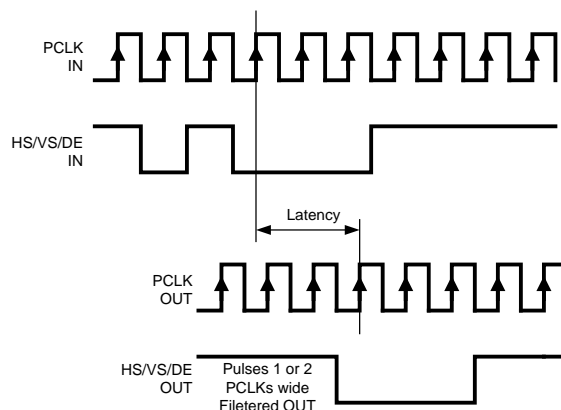
CONFIG1	CONFIG0	Mode	Ser Device
L	L	Normal Mode, Control Signal Filter disabled	DS90UR905Q
L	H	Normal Mode, Control Signal Filter enabled	DS90UR905Q
H	L	Backwards Compatible GEN2	DS90UR241
H	H	Backwards Compatible GEN1	DS90C241

## VIDEO CONTROL SIGNAL FILTER — Ser and Des

When operating the devices in Normal Mode, the Video Control Signals (DE, HS, VS) have the following restrictions:

- Normal Mode with Control Signal Filter Enabled:
  - DE and HS — Only 2 transitions per 130 clock cycles are transmitted, the transition pulse must be 3 PCLK or longer.
- Normal Mode with Control Signal Filter Disabled:
  - DE and HS — Only 2 transitions per 130 clock cycles are transmitted, no restriction on minimum transition pulse.
- VS — Only 1 transition per 130 clock cycles are transmitted, minimum pulse width is 130 clock cycles.

Video Control Signals are defined as low frequency signals with limited transitions. Glitches of a control signal can cause a visual display error. This feature allows for the chipset to validate and filter out any high frequency noise on the control signals. See [Figure 20](#).

**Figure 20. Video Control Signal Filter Waveform**

## SERIALIZER FUNCTIONAL DESCRIPTION

The Ser converts a wide parallel input bus to a single serial output data stream, and also acts as a signal generator for the chipset Built In Self Test (BIST) mode. The device can be configured via external pins or through the optional serial control bus. The Ser features enhance signal quality on the link by supporting: a selectable VOD level, a selectable de-emphasis signal conditioning and also the FPD-Link II data coding that provides randomization, scrambling, and DC Balancing of the video data. The Ser includes multiple features to reduce EMI associated with display data transmission. This includes the randomization and scrambling of the data and also the system spread spectrum PCLK support. The Ser features power saving features with a sleep mode, auto stop clock feature, and optional LVCMOS (1.8 V) parallel bus compatibility.

See also the Functional Description of the chipset's serial control bus and BIST modes.



## EMI Reduction Features

### Ser — Spread Spectrum Compatibility

The Ser PCLK is capable of tracking spread spectrum clocking (SSC) from a host source. The PCLK will accept spread spectrum tracking up to 35kHz modulation and  $\pm 0.5$ ,  $\pm 1$  or  $\pm 2\%$  deviations (center spread). The maximum conditions for the PCLK input are: a modulation frequency of 35kHz and amplitude deviations of  $\pm 2\%$  (4% total).

## Signal Quality Enhancers

### Ser — VOD Select (VODSEL)

The Ser differential output voltage may be increased by setting the VODSEL pin High. When VODSEL is Low, the VOD is at the standard (default) level. When VODSEL is High, the DC VOD is increased in level. The increased VOD is useful in extremely high noise environments and also on extra long cable length applications. When using de-emphasis it is recommended to set VODSEL = H to avoid excessive signal attenuation especially with the larger de-emphasis settings. This feature may be controlled by the external pin or by register.

**Table 3. Differential Output Voltage**

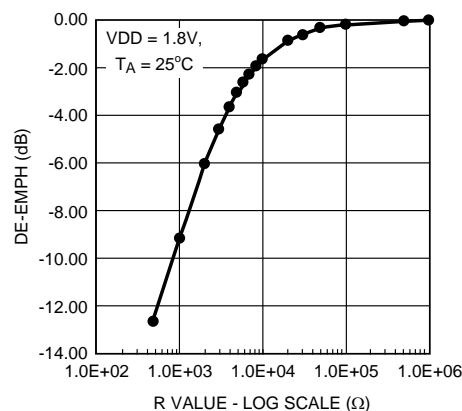
Input	Effect	
VODSEL	VOD (mV)	VOD (mVp-p)
H	$\pm 420$	840
L	$\pm 280$	560

### Ser — De-Emphasis (De-Emph)

The De-Emph pin controls the amount of de-emphasis beginning one full bit time after a logic transition that the Ser drives. This is useful to counteract loading effects of long or lossy cables. This pin should be left open for standard switching currents (no de-emphasis) or if controlled by register. De-emphasis is selected by connecting a resistor on this pin to ground, with R value between 0.5 k $\Omega$  to 1 M $\Omega$ , or by register setting. When using De-Emphasis it is recommended to set VODSEL = H.

**Table 4. De-Emphasis Resistor Value**

Resistor Value (k $\Omega$ )	De-Emphasis Setting
Open	Disabled
0.6	- 12 dB
1.0	- 9 dB
2.0	- 6 dB
5.0	- 3 dB



**Figure 21. De-Emph vs. R value**

## Power Saving Features

### Ser — Power Down Feature (PDB)

The Ser has a PDB input pin to ENABLE or POWER DOWN the device. This pin is controlled by the host and is used to save power, disabling the link when the display is not needed. In the POWER DOWN mode, the high-speed driver outputs are both pulled to VDD and present a 0V VOD state. Note – in POWER DOWN, the optional Serial Bus Control Registers are **RESET**.

### Ser — Stop Clock Feature

The Ser will enter a low power SLEEP state when the PCLK is stopped. A STOP condition is detected when the input clock frequency is less than 3 MHz. The clock should be held at a static Low or high state. When the PCLK starts again, the Ser will then lock to the valid input PCLK and then transmits the RGB data to the Des. Note – in STOP CLOCK SLEEP, the optional Serial Bus Control Registers values are **RETAINED**.

### 1.8V or 3.3V VDDIO Operation

The Ser parallel bus and Serial Bus Interface can operate with 1.8 V or 3.3 V levels ( $V_{DDIO}$ ) for host compatibility. The 1.8 V levels will offer lower noise (EMI) and also a system power savings.

### Ser — Pixel Clock Edge Select (RFB)

The RFB pin determines the edge that the data is latched on. If RFB is High, input data is latched on the Rising edge of the PCLK. If RFB is Low, input data is latched on the Falling edge of the PCLK. Ser and Des maybe set differently. This feature may be controlled by the external pin or by register.

## Optional Serial Bus Control

Please see the following section on the optional Serial Bus Control Interface.

## Optional BIST Mode

Please see the following section on the chipset BIST mode for details.

## DESERIALIZER FUNCTIONAL DESCRIPTION

The Des converts a single input serial data stream to a wide parallel output bus, and also provides a signal check for the chipset Built In Self Test (BIST) mode. The device can be configured via external pins and strap pins or through the optional serial control bus. The Des features enhance signal quality on the link by supporting: an equalizer input and also the FPD-Link II data coding that provides randomization, scrambling, and DC balancing of the data. The Des includes multiple features to reduce EMI associated with display data transmission. This includes the randomization and scrambling of the data and also the output spread spectrum clock generation (SSCG) support. The Des features power saving features with a power down mode, and optional LVCMOS (1.8 V) interface compatibility.

## Signal Quality Enhancers

### Des — Input Equalizer Gain (EQ)

The Des can enable receiver input equalization of the serial stream to increase the eye opening to the Des input. Note this function cannot be seen at the RxIN+/- input but can be observed at the serial test port (CMLOUTP/N) enabled via the Serial Bus control registers. The equalization feature may be controlled by the external pin or by register.

**Table 5. Receiver Equalization Configuration Table**

INPUTS				Effect
EQ3	EQ2	EQ1	EQ0	
L	L	L	H	~1.5 dB
L	L	H	H	~3 dB
L	H	L	H	~4.5 dB

**Table 5. Receiver Equalization Configuration Table (continued)**

INPUTS				Effect
EQ3	EQ2	EQ1	EQ0	
L	H	H	H	~6 dB
H	L	L	H	~7.5 dB
H	L	H	H	~9 dB
H	H	L	H	~10.5 dB
H	H	H	H	~12 dB
X	X	X	L	OFF*
* Default Setting is EQ = Off				

## EMI Reduction Features

### Des — Output Slew (OS\_PCLK/DATA)

The parallel bus outputs (RGB[7:0], VS, HS, DE and PCLK) of the Des feature a selectable output slew. The DATA ((RGB[7:0], VS, HS, DE) are controlled by strap pin or register bit OS\_DATA. The PCLK is controlled by strap pin or register bit OS\_PCLK. When the OS\_PCLK/DATA = HIGH, the maximum slew rate is selected. When the OS\_PCLK/DATA = LOW, the minimum slew rate is selected. Use the higher slew rate setting when driving longer traces or a heavier capacitive load.

### Des — Common Mode Filter Pin (CMF) — Optional

The Des provides access to the center tap of the internal termination. A capacitor may be placed on this pin for additional common-mode filtering of the differential pair. This can be useful in high noise environments for additional noise rejection capability. A 0.1µF capacitor may be connected to this pin to Ground.

### Des — SSCG Generation — Optional

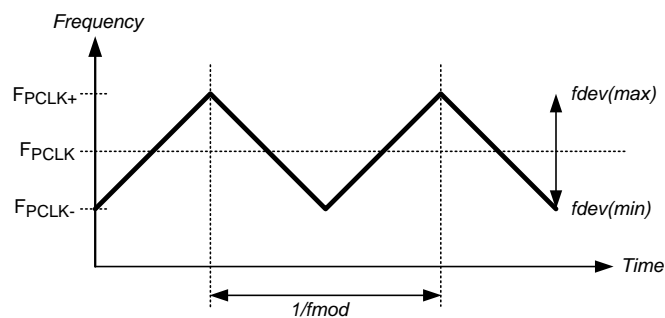
The Des provides an internally generated spread spectrum clock (SSCG) to modulate its outputs. Both clock and data outputs are modulated. This will aid to lower system EMI. Output SSCG deviations to ±2.0% (4% total) at up to 35kHz modulations nominally are available. See Table 6. This feature may be controlled by external STRAP pins or by register.

**Table 6. SSCG Configuration (LF\_MODE = L) — Des Output**

SSC[3:0] Inputs LF_MODE = L (20 - 65 MHz)				Result	
SSC3	SSC2	SSC1	SSC0	fdev (%)	fmod (kHz)
L	L	L	L	Off	Off
L	L	L	H	±0.5	PCLK/2168
L	L	H	L	±1.0	
L	L	H	H	±1.5	
L	H	L	L	±2.0	
L	H	L	H	±0.5	PCLK/1300
L	H	H	L	±1.0	
L	H	H	H	±1.5	
H	L	L	L	±2.0	
H	L	L	H	±0.5	PCLK/868
H	L	H	L	±1.0	
H	L	H	H	±1.5	
H	H	L	L	±2.0	
H	H	L	H	±0.5	PCLK/650
H	H	H	L	±1.0	
H	H	H	H	±1.5	

**Table 7. SSCG Configuration (LF\_MODE = H) — Des Output**

SSC[3:0] Inputs LH_MODE = H (5 - 20 MHz)				Result	
SSC3	SSC2	SSC1	SSC0	fdev (%)	fmod (kHz)
L	L	L	L	Off	Off
L	L	L	H	±0.5	PCLK/620
L	L	H	L	±1.0	
L	L	H	H	±1.5	
L	H	L	L	±2.0	
L	H	L	H	±0.5	PCLK/370
L	H	H	L	±1.0	
L	H	H	H	±1.5	
H	L	L	L	±2.0	
H	L	L	H	±0.5	PCLK/258
H	L	H	L	±1.0	
H	L	H	H	±1.5	
H	H	L	L	±2.0	
H	H	L	H	±0.5	PCLK/192
H	H	H	L	±1.0	
H	H	H	H	±1.5	

**Figure 22. SSCG Waveform****1.8V or 3.3V VDDIO Operation**

The Des parallel bus and Serial Bus Interface can operate with 1.8 V or 3.3 V levels ( $V_{DDIO}$ ) for target (Display) compatibility. The 1.8 V levels will offer a lower noise (EMI) and also a system power savings.

**Power Saving Features****Des — PowerDown Feature (PDB)**

The Des has a PDB input pin to ENABLE or POWER DOWN the device. This pin can be controlled by the system to save power, disabling the Des when the display is not needed. An auto detect mode is also available. In this mode, the PDB pin is tied High and the Des will enter POWER DOWN when the serial stream stops. When the serial stream starts up again, the Des will lock to the input stream and assert the LOCK pin and output valid data. In POWER DOWN mode, the Data and PCLK output states are determined by the OSS\_SEL status. Note – in POWER DOWN, the optional Serial Bus Control Registers are **RESET**.

**Des — Stop Stream SLEEP Feature**

The Des will enter a low power SLEEP state when the input serial stream is stopped. A STOP condition is detected when the embedded clock bits are not present. When the serial stream starts again, the Des will then lock to the incoming signal and recover the data. Note – in STOP STREAM SLEEP, the optional Serial Bus Control Registers values are **RETAINED**.

## Des — CLOCK-DATA RECOVERY STATUS FLAG (LOCK) and OUTPUT STATE SELECT (OSS\_SEL)

When PDB is driven HIGH, the CDR PLL begins locking to the serial input and LOCK goes from TRI-STATE to LOW (depending on the value of the OSS\_SEL setting). After the DS90UR906Q completes its lock sequence to the input serial data, the LOCK output is driven HIGH, indicating valid data and clock recovered from the serial input is available on the parallel bus and PCLK outputs. The PCLK output is held at its current state at the change from OSC\_CLK (if this is enabled via OSS\_SEL) to the recovered clock (or vice versa).

If there is a loss of clock from the input serial stream, LOCK is driven Low and the state of the RGB/VS/HS/DE outputs are based on the OSS\_SEL setting (STRAP PIN configuration or register).

## Des — Oscillator Output — Optional

The Des provides an optional PCLK output when the input clock (serial stream) has been lost. This is based on an internal oscillator. The frequency of the oscillator may be selected. This feature may be controlled by the external pin or by register. See [Table 9](#) and [Table 10](#).

**Table 8. OSS\_SEL and PDB Configuration — Des Outputs**

INPUTS			OUTPUTS			
Serial Input	PDB	OSS_SEL	PCLK	RGB/HS/VS/DE	LOCK	PASS
X	L	X	Z	Z	Z	Z
Static	H	L	L	L	L	L
Static	H	H	Z	Z*	L	L
Active	H	X	Active	Active	H	H

\*NOTE — If pin is strapped HIGH, output will be pulled up

**Table 9. OSC (Oscillator) Mode — Des Output**

INPUTS	OUTPUTS			
Embedded PCLK	PCLK	RGB/HS/VS/DE	LOCK	PASS
NOTE *	OSC Output	L	L	L
Present	Toggling	Active	H	H

\* NOTE — Absent and OSS\_SEL ≠ 000

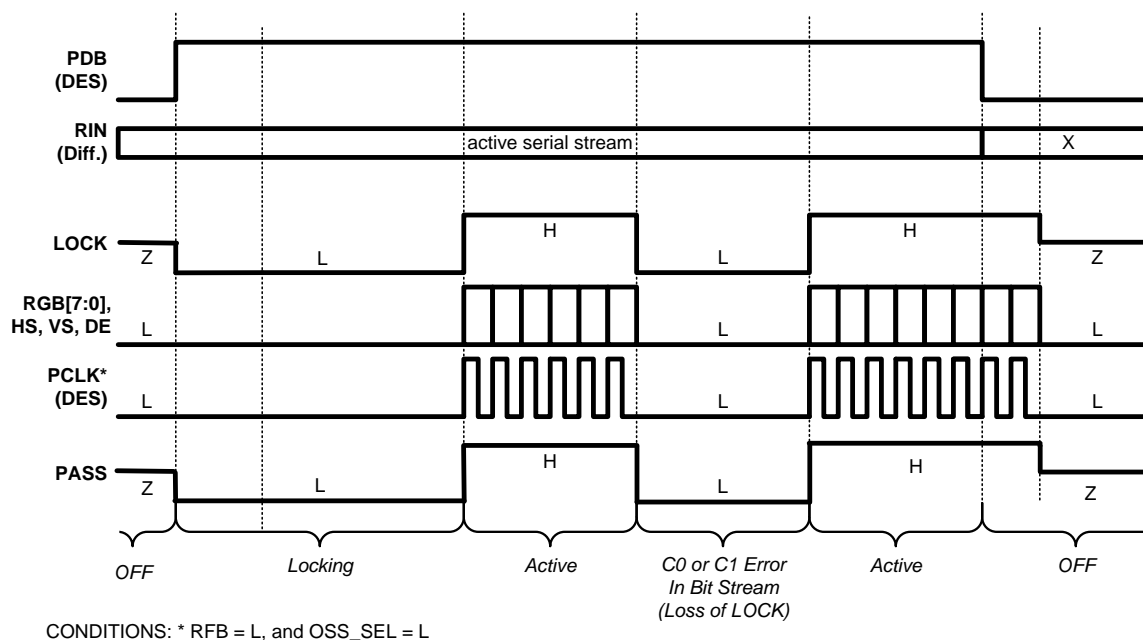


Figure 23. Des Outputs with Output State Select Low (OSS\_SEL = L)

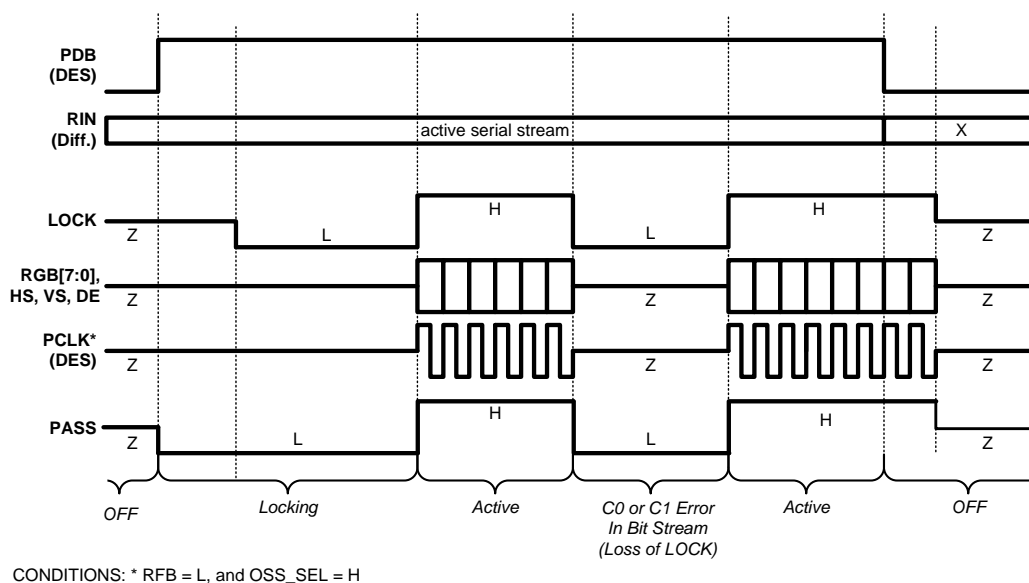


Figure 24. Des Outputs with Output State Select High (OSS\_SEL = H)

Table 10. OSC\_SEL (Oscillator) Configuration

OSC_SEL[2:0] INPUTS			PCLK Oscillator Output
OSC_SEL2	OSC_SEL1	OSC_SEL0	
L	L	L	Off – Feature Disabled – Default
L	L	H	50 MHz $\pm 40\%$
L	H	L	25 MHz $\pm 40\%$
L	H	H	16.7 MHz $\pm 40\%$
H	L	L	12.5 MHz $\pm 40\%$
H	L	H	10 MHz $\pm 40\%$
H	H	L	8.3 MHz $\pm 40\%$
H	H	H	6.3 MHz $\pm 40\%$

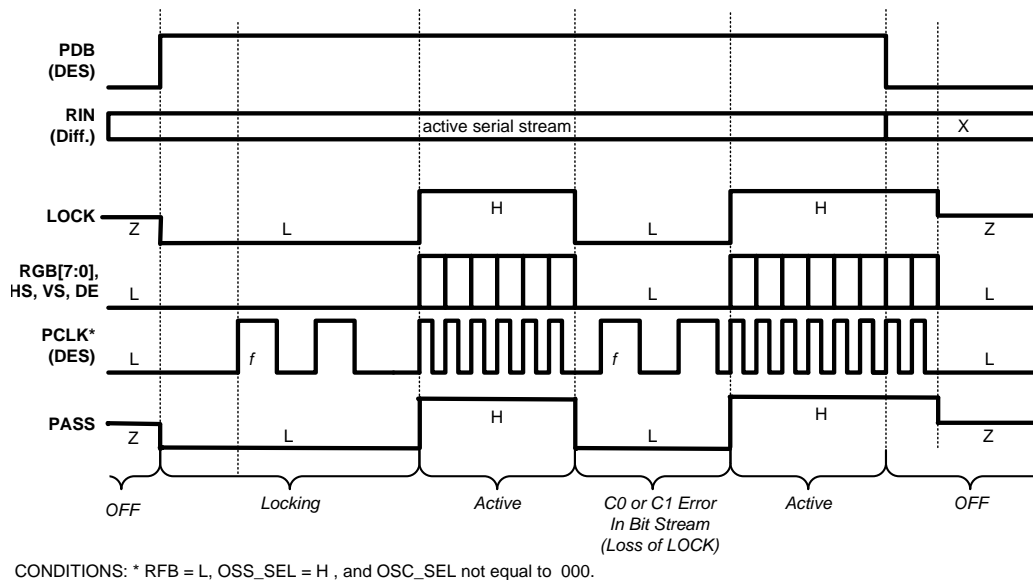


Figure 25. Des Outputs with Output State High and PCLK Output Oscillator Option Enabled

### Des — OP\_LOW — Optional

The OP\_LOW feature is used to hold the LVCMOS outputs (except the LOCK output) at a LOW state. The user must toggle the OP\_LOW Set/Reset register bit to release the outputs to the normal toggling state. Note that the release of the outputs can only occur when LOCK is HIGH. When the OP\_LOW feature is enabled, anytime LOCK = LOW, the LVCMOS outputs will toggle to a LOW state again. The OP\_LOW strap pin feature is assigned to output PASS pin 42.

Restrictions on other straps:

- 1) Other straps should not be used in order to keep RGB[7:0], HS, VS, DE, and PCLK at a true LOW state. Other features should be selected thru I2C.
- 2) OSS\_SEL function is not available when O/P\_LOW is tied H.

Outputs RGB[7:0], HSYNC, VSYNC, DE, and PCLK are in TRI-STATE before PDB toggles HIGH because the OP\_LOW strap value has not been recognized until the DS90UR906 powers up. Figure 26 shows the user controlled release of OP\_LOW and automatic reset of OP\_LOW set on the falling edge of LOCK. Figure 27 shows the user controlled release of OP\_LOW and manual reset of OP\_LOW set. Note manual reset of OP\_LOW can only occur when LOCK is H.

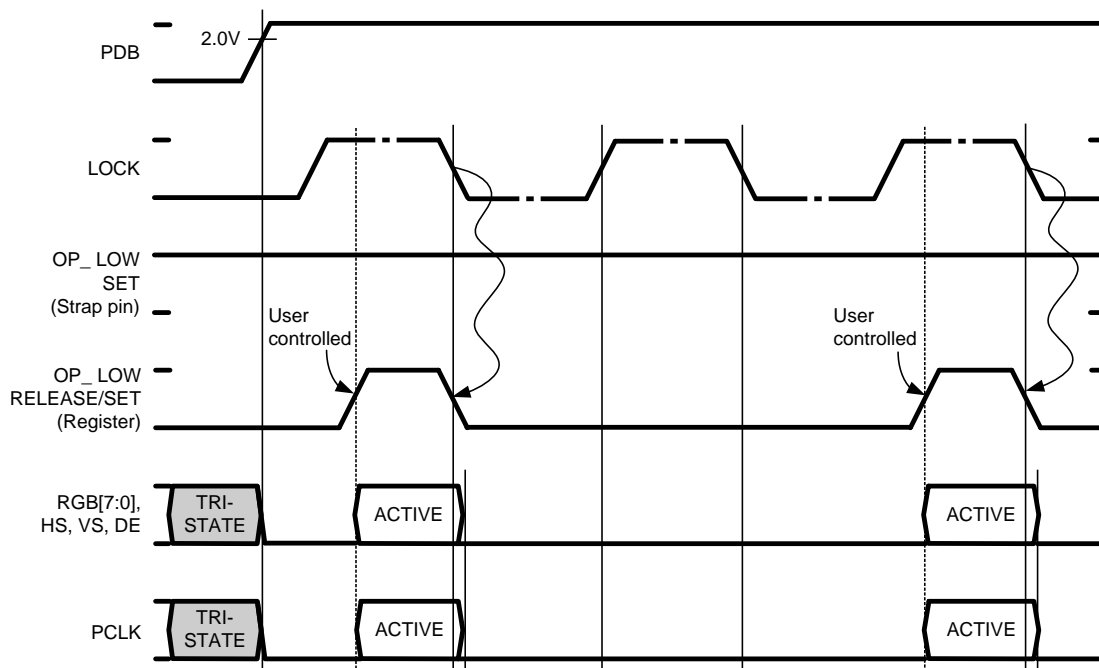


Figure 26. OP\_LOW Auto Set

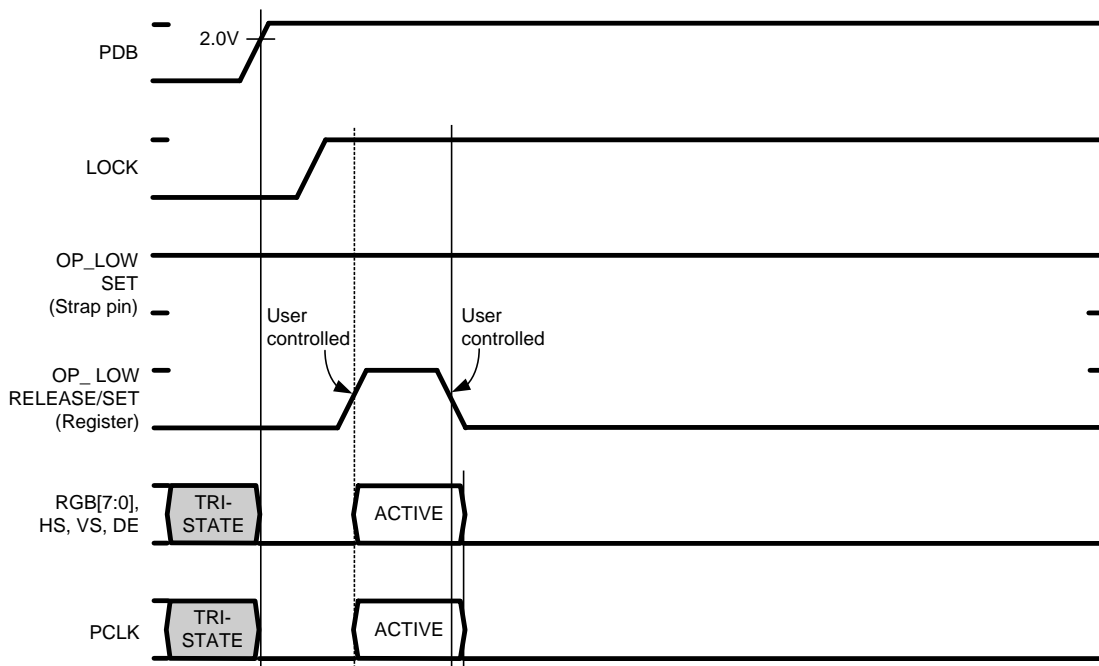


Figure 27. OP\_LOW Manual Set/Reset

### Des — Pixel Clock Edge Select (RFB)

The RFB pin determines the edge that the data is strobed on. If RFB is High, output data is strobed on the Rising edge of the PCLK. If RFB is Low, data is strobed on the Falling edge of the PCLK. This allows for interoperability with downstream devices. The Des output does not need to use the same edge as the Ser input. This feature may be controlled by the external pin or by register.



### Des — Control Signal Filter — Optional

The Des provides an optional Control Signal (VS, HS, DE) filter that monitors the three video control signals and eliminates any pulses that are 1 or 2 PCLKs wide. Control signals must be 3 pixel clocks wide (in its HIGH or LOW state, regardless of which state is active). This is set by the CONFIG[1:0] or by the Control Register. This feature may be controlled by the external pin or by Register.

### Des — Low Frequency Optimization (LF\_Mode)

This feature may be controlled by the external pin or by Register.

### Des — Map Select

This feature may be controlled by the external pin or by Register.

**Table 11. Map Select Configuration**

INPUTS		Effect
MAPSEL1	MAPSEL0	
L	L	Bit 4, Bit 5 on LSB <b>DEFAULT</b>
L	H	LSB 0 or 1
H	H or L	LSB 0

### Des — Strap Input Pins

Configuration of the device maybe done via configuration input pins and the STRAP input pins, or via the Serial Control Bus. The STRAP input pins share select parallel bus output pins. They are used to load in configuration values during the initial power up sequence of the device. Only a pull-up on the pin is required when a HIGH is desired. By default the pad has an internal pull down, and will bias Low by itself. The recommended value of the pull up is 10 kΩ to V<sub>DDIO</sub>; open (NC) for Low, no pull-down is required (internal pull-down). If using the Serial Control Bus, no pull ups are required.

### Optional Serial Bus Control

Please see the following section on the optional Serial Bus Control Interface.

### Optional BIST Mode

Please see the following section on the chipset BIST mode for details.

### Built In Self Test (BIST)

An optional At-Speed Built In Self Test (BIST) feature supports the testing of the high-speed serial link. This is useful in the prototype stage, equipment production, in-system test and also for system diagnostics. In the BIST mode only a input clock is required along with control to the Ser and Des BISTEN input pins. The Ser outputs a test pattern (PRBS7) and drives the link at speed. The Des detects the PRBS7 pattern and monitors it for errors. A PASS output pin toggles to flag any payloads that are received with 1 to 24 errors. Upon completion of the test, the result of the test is held on the PASS output until reset (new BIST test or Power Down). A high on PASS indicates NO ERRORS were detected. A Low on PASS indicates one or more errors were detected. The duration of the test is controlled by the pulse width applied to the Des BISTEN pin. During the BIST duration the deserializer data outputs toggle with a checkerboard pattern.

Inter-operability is supported between this FPD-Link II device and all FPD-Link II generations (Gen 1/2/3) — see respective datasheets for details on entering BIST mode and control.

### Sample BIST Sequence

See [Figure 28](#) for the BIST mode flow diagram.

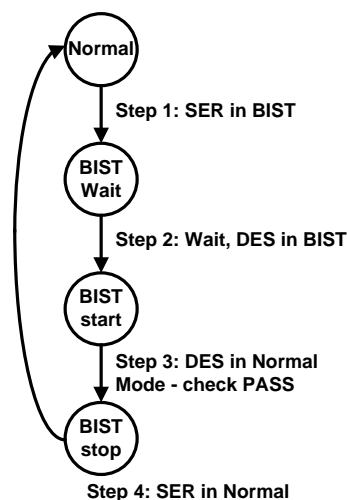
**Step 1:** Place the DS90UR905Q Ser in BIST Mode by setting Ser BISTEN = H. For the DS90UR905Q Ser or DS99R421 FPD-Link II Ser BIST Mode is enabled via the BISTEN pin. For the DS90C241 Ser or DS90UR241 Ser, BIST mode is entered by setting all the input data of the device to Low state. A PCLK is required for all the Ser options. When the Des detects the BIST mode pattern and command (DCA and DCB code) the RGB and control signal outputs are shut off.

**Step 2:** Place the DS90UR906Q Des in BIST mode by setting the BISTEN = H. The Des is now in the BIST mode and checks the incoming serial payloads for errors. If an error in the payload (1 to 24) is detected, the PASS pin will switch low for one half of the clock period. During the BIST test, the PASS output can be monitored and counted to determine the payload error rate.

**Step 3:** To Stop the BIST mode, the Des BISTEN pin is set Low. The Des stops checking the data and the final test result is held on the PASS pin. If the test ran error free, the PASS output will be High. If there was one or more errors detected, the PASS output will be Low. The PASS output state is held until a new BIST is run, the device is RESET, or Powered Down. The BIST duration is user controlled by the duration of the BISTEN signal.

**Step 4:** To return the link to normal operation, the Ser BISTEN input is set Low. The Link returns to normal operation.

Figure 29 shows the waveform diagram of a typical BIST test for two cases. Case 1 is error free, and Case 2 shows one with multiple errors. In most cases it is difficult to generate errors due to the robustness of the link (differential data transmission etc.), thus they may be introduced by greatly extending the cable length, faulting the interconnect, reducing signal condition enhancements (De-Emphasis, VODSEL, or Rx Equalization).



**Figure 28. BIST Mode Flow Diagram**

## BER Calculations

It is possible to calculate the approximate Bit Error Rate (BER). The following is required:

- Pixel Clock Frequency (MHz)
- BIST Duration (seconds)
- BIST test Result (PASS)

The BER is less than or equal to one over the product of 24 times the PCLK rate times the test duration. If we assume a 65MHz PCLK, a 10 minute (600 second) test, and a PASS, the BERT is  $\leq 1.07 \times 10^{-12}$

The BIST mode runs a check on the data payload bits. The LOCK pin also provides a link status. If the recovery of the C0 and C1 bits does not reconstruct the expected clock signal, the LOCK pin will switch Low. The combination of the LOCK and At-Speed BIST PASS pin provides a powerful tool for system evaluation and performance monitoring.

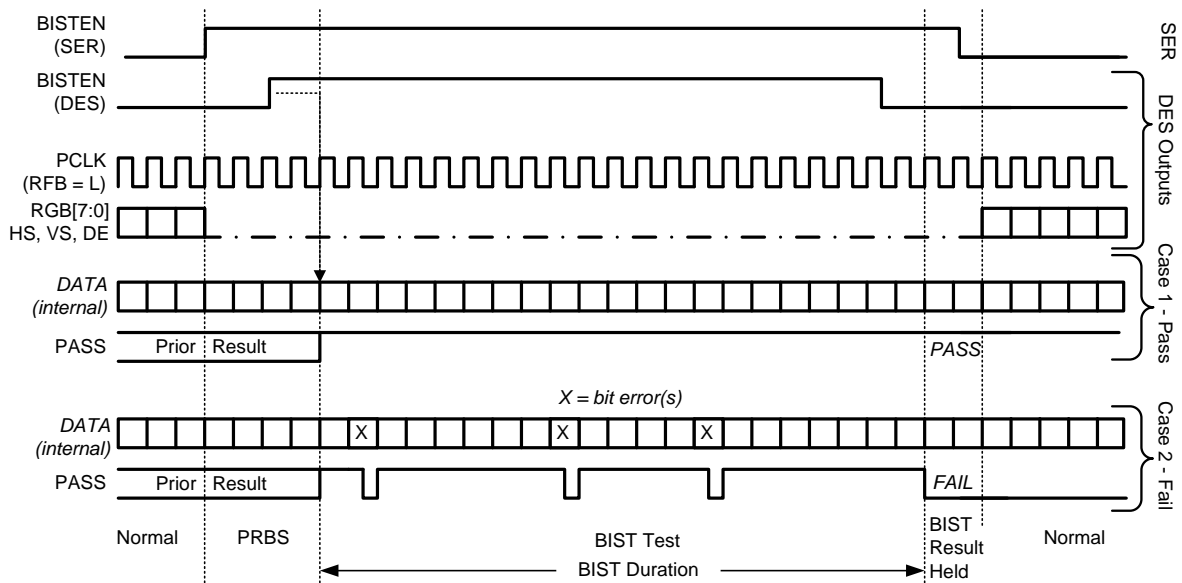


Figure 29. BIST Waveforms

### Optional Serial Bus Control

The Ser and Des may also be configured by the use of a serial control bus that is I2C protocol compatible. By default, the I2C reg\_0x00'h is set to 00'h and all configuration is set by control/strap pins. A write of 01'h to reg\_0x00'h will enable/allow configuration by registers; this will override the control/strap pins. Multiple devices may share the serial control bus since multiple addresses are supported. See [Figure 30](#).

The serial bus is comprised of three pins. The SCL is a Serial Bus Clock Input. The SDA is the Serial Bus Data Input / Output signal. Both SCL and SDA signals require an external pull up resistor to  $V_{DDIO}$ . For most applications a 4.7 k pull up resistor to  $V_{DDIO}$  may be used. The resistor value may be adjusted for capacitive loading and data rate requirements. The signals are either pulled High, or driven Low.

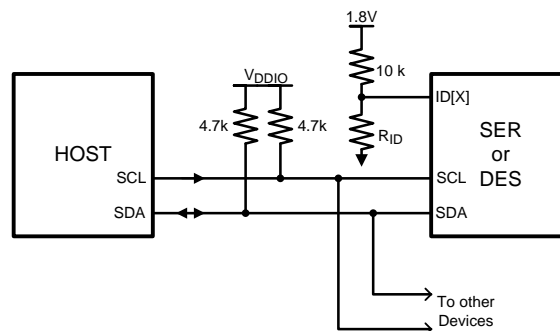
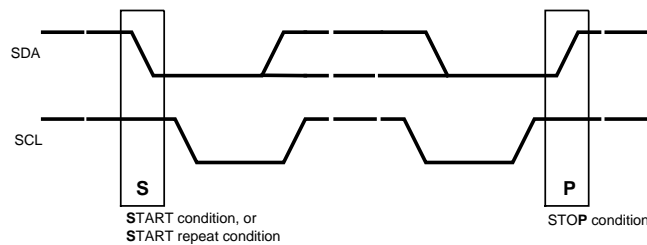


Figure 30. Serial Control Bus Connection

The third pin is the ID[X] pin. This pin sets one of four possible device addresses. Two different connections are possible. The pin may be pulled to  $V_{DD}$  (1.8V, NOT  $V_{DDIO}$ ) with a 10 k $\Omega$  resistor; or a 10 k $\Omega$  pull up resistor (to  $V_{DD}$  1.8V, NOT  $V_{DDIO}$ ) and a pull down resistor of the recommended value to set other three possible addresses may be used. See [Table 12](#) for the Ser and [Table 13](#) for the Des. Do not tie ID[x] directly to VSS.

The Serial Bus protocol is controlled by START, START-Repeated, and STOP phases. A START occurs when SCL transitions Low while SDA is High. A STOP occurs when SDA transition High while SCL is also HIGH. See [Figure 31](#).

**Figure 31. START and STOP Conditions**

To communicate with a remote device, the host controller (master) sends the slave address and listens for a response from the slave. This response is referred to as an acknowledge bit (ACK). If a slave on the bus is addressed correctly, it Acknowledges (ACKs) the master by driving the SDA bus low. If the address doesn't match a device's slave address, it Not-acknowledges (NACKs) the master by letting SDA be pulled High. ACKs also occur on the bus when data is being transmitted. When the master is writing data, the slave ACKs after every data byte is successfully received. When the master is reading data, the master ACKs after every data byte is received to let the slave know it wants to receive another data byte. When the master wants to stop reading, it NACKs after the last data byte and creates a stop condition on the bus. All communication on the bus begins with either a Start condition or a Repeated Start condition. All communication on the bus ends with a Stop condition. A READ is shown in [Figure 32](#) and a WRITE is shown in [Figure 33](#).

Note: During initial power-up, a delay of 10ms will be required before the I2C will respond.

If the Serial Bus is not required, the three pins may be left open (NC).

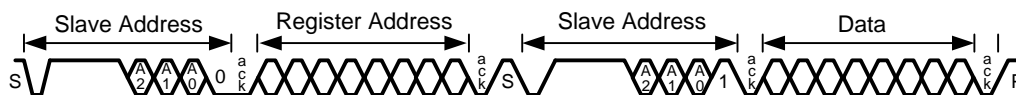
**Table 12. ID[x] Resistor Value – DS90UR905Q Ser**

Resistor RID* k $\Omega$ (5% tol)	Address 7'b	Address 8'b 0 appended (WRITE)
0.47	7b' 110 1001 (h'69)	8b' 1101 0010 (h'D2)
2.7	7b' 110 1010 (h'6A)	8b' 1101 0100 (h'D4)
8.2	7b' 110 1011 (h'6B)	8b' 1101 0110 (h'D6)
Open	7b' 110 1110 (h'6E)	8b' 1101 1100 (h'DC)

**Table 13. ID[x] Resistor Value – DS90UR906Q Des**

Resistor RID* k $\Omega$ (5% tol)	Address 7'b	Address 8'b 0 appended (WRITE)
0.47	7b' 111 0001 (h'71)	8b' 1110 0010 (h'E2)
2.7	7b' 111 0010 (h'72)	8b' 1110 0100 (h'E4)
8.2	7b' 111 0011 (h'73)	8b' 1110 0110 (h'E6)
Open	7b' 111 0110 (h'76)	8b' 1110 1100 (h'EC)

\*Note: RID  $\neq$  0 ohm, do not connect directly to VSS (GND), this is not a valid address.

**Figure 32. Serial Control Bus — READ**


**Figure 33. Serial Control Bus — WRITE**
**Table 14. SERIALIZER — Serial Bus Control Registers**

ADD (dec)	ADD (hex)	Register Name	Bit(s)	R/W	Default (bin)	Function	Description
0	0	Ser Config 1	7	R/W	0	<b>Reserved</b>	<b>Reserved</b>
			6	R/W	0	<b>Reserved</b>	<b>Reserved</b>
			5	R/W	0	VODSEL	0: Low 1: High
			4	R/W	0	RFB	0: Data latched on Falling edge of PCLK 1: Data latched on Rising edge of PCLK
			3:2	R/W	00	CONFIG	00: Control Signal Filter Disabled 01: Control Signal Filter Enabled 10: DS90UR124, DS99R124 Mode 11: DS90C124 Mode
			1	R/W	0	SLEEP	Note – not the same function as PowerDown (PDB) 0: normal mode 1: Sleep Mode – <b>Register settings retained.</b>
			0	R/W	0	REG	0: Configurations set from control pins 1: Configuration set from registers (except I2C_ID)
1	1	Device ID	7	R/W	0	REG ID	0: Address from ID[x] Pin 1: Address from Register
			6:0	R/W	1101000	ID[X]	Serial Bus Device ID, Four IDs are: 7b '1101 001 (h'69) 7b '1101 010 (h'6A) 7b '1101 011 (h'6B) 7b '1101 110 (h'6E) All other addresses are <b>Reserved</b> .
2	2	De-Emphasis Control	7:5	R/W	000	De-E Setting	000: set by external Resistor 001: -1 dB 010: -2 dB 011: -3.3 dB 100: -5 dB 101: -6.7 dB 110: -9 dB 111: -12 dB
			4	R/W	0	De-E EN	0: De-Emphasis Enabled 1: De-Emphasis Disabled
			3:0	R/W	000	<b>Reserved</b>	<b>Reserved</b>

**Table 15. DESERIALIZER — Serial Bus Control Registers**

ADD (dec)	ADD (hex)	Register Name	Bit(s)	R/W	Default (bin)	Function	Description
0	0	Des Config 1	7	R/W	0	LFMODE	0: 20 to 65 MHz Operation 1: 5 to 20 MHz Operation
			6	R/W	0	OS_PCLK	0: Normal PCLK Output Slew 1: Increased PCLK Slew
			5	R/W	0	OS_DATA	0: Normal DATA OUTPUT Slew 1: Increased Data Slew
			4	R/W	0	RFB	0: Data strobed on Falling edge of PCLK 1: Data strobed on Rising edge of PCLK
			3:2	R/W	00	CONFIG	00: Normal Mode, Control Signal Filter Disabled 01: Normal Mode, Control Signal Filter Enabled 10: Backwards Compatible (DS90UR241) 11: Backwards Compatible (DS90C241)
			1	R/W	0	SLEEP	Note – not the same function as PowerDown (PDB) 0: normal mode 1: Sleep Mode – <b>Register settings retained.</b>
			0	R/W	0	REG Control	0: Configurations set from control pins / STRAP pins 1: Configurations set from registers (except I2C_ID)
1	1	Slave ID	7	R/W	0		0: Address from ID[X] Pin 1: Address from Register
			6:0	R/W	1110000	ID[X]	Serial Bus Device ID, Four IDs are: 7b '1110 001 (h'71) 7b '1110 010 (h'72) 7b '1110 011 (h'73) 7b '1110 110 (h'76) All other addresses are <b>Reserved</b> .
2	2	Des Features 1	7	R/W	0	OP_LOW Release/Set	0: set outputs state LOW (except LOCK) 1: release output LOW state, outputs toggling normally Note: This register only works during LOCK = 1.
			6	R/W	0	OSS_SEL	Output Sleep State Select 0: PCLK/RGB[7:0]/HS/VS/DE = L, LOCK = Normal, PASS = H 1: PCLK/RGB[7:0]/HS/VS/DE = Tri-State, LOCK = Normal, PASS = H
			5:4	R/W	00	MAP_SEL	Special for Backwards Compatible Mode 00: bit 4, 5 on LSB 01: LSB zero if all data is zero; one if any data is one 10: LSB zero 11: LSB zero
			3	R/W	0	OP_LOW strap bypass	0: strap will determine whether OP_LOW feature is ON or OFF 1: Turns OFF OP_LOW feature
			2:0	R/W	00	OSC_SEL	000: OFF 001: 50 MHz $\pm 40\%$ 010: 25 MHz $\pm 40\%$ 011: 16.7 MHz $\pm 40\%$ 100: 12.5 MHz $\pm 40\%$ 101: 10 MHz $\pm 40\%$ 110: 8.3 MHz $\pm 40\%$ 111: 6.3 MHz $\pm 40\%$

**Table 15. DESERIALIZER — Serial Bus Control Registers (continued)**

ADD (dec)	ADD (hex)	Register Name	Bit(s)	R/W	Default (bin)	Function	Description
3	3	Des Features 2	7:5	R/W	000	EQ Gain	000: ~1.625 dB 001: ~3.25 dB 010: ~4.87 dB 011: ~6.5 dB 100: ~8.125 dB 101: ~9.75 dB 110: ~11.375 dB 111: ~13 dB
			4	R/W	0	EQ Enable	0: EQ = disabled 1: EQ = enabled
			3:0	R/W	0000	SSC	<b>IF LF_MODE = 0, then:</b> 000: SSCG OFF 0001: fdev = ±0.5%, fmod = PCLK/2168 0010: fdev = ±1.0%, fmod = PCLK/2168 0011: fdev = ±1.5%, fmod = PCLK/2168 0100: fdev = ±2.0%, fmod = PCLK/2168 0101: fdev = ±0.5%, fmod = PCLK/1300 0110: fdev = ±1.0%, fmod = PCLK/1300 0111: fdev = ±1.5%, fmod = PCLK/1300 1000: fdev = ±2.0%, fmod = PCLK/1300 1001: fdev = ±0.5%, fmod = PCLK/868 1010: fdev = ±1.0%, fmod = PCLK/868 1011: fdev = ±1.5%, fmod = PCLK/868 1100: fdev = ±2.0%, fmod = PCLK/868 1101: fdev = ±0.5%, fmod = PCLK/650 1110: fdev = ±1.0%, fmod = PCLK/650 1111: fdev = ±1.5%, fmod = PCLK/650 <b>IF LF_MODE = 1, then:</b> 000: SSCG OFF 0001: fdev = ±0.5%, fmod = PCLK/620 0010: fdev = ±1.0%, fmod = PCLK/620 0011: fdev = ±1.5%, fmod = PCLK/620 0100: fdev = ±2.0%, fmod = PCLK/620 0101: fdev = ±0.5%, fmod = PCLK/370 0110: fdev = ±1.0%, fmod = PCLK/370 0111: fdev = ±1.5%, fmod = PCLK/370 1000: fdev = ±2.0%, fmod = PCLK/370 1001: fdev = ±0.5%, fmod = PCLK/258 1010: fdev = ±1.0%, fmod = PCLK/258 1011: fdev = ±1.5%, fmod = PCLK/258 1100: fdev = ±2.0%, fmod = PCLK/258 1101: fdev = ±0.5%, fmod = PCLK/192 1110: fdev = ±1.0%, fmod = PCLK/192 1111: fdev = ±1.5%, fmod = PCLK/192
4	4	CMLOUT Config	7	R/W	0	Repeater Enable	0: Output CMLOUTP/N = disabled 1: Output CMLOUTP/N = enabled
			6:0	R/W	000000	<b>Reserved</b>	<b>Reserved</b>

## APPLICATIONS INFORMATION

### DISPLAY APPLICATION

The DS90UR905Q/906Q chipset is intended for interface between a host (graphics processor) and a Display. It supports an 24-bit color depth (RGB888) and up to 1024 X 768 display formats. In a RGB888 application, 24 color bits (R[7:0], G[7:0], B[7:0]), Pixel Clock (PCLK) and three control bits (VS, HS and DE) are supported across the serial link with PCLK rates from 5 to 65 MHz. The chipset may also be used in 18-bit color applications. In this application three to six general purpose signals may also be sent from host to display.

The Des is expected to be located close to its target device. The interconnect between the Des and the target device is typically in the 1 to 3 inch separation range. The input capacitance of the target device is expected to be in the 5 to 10 pF range. Care should be taken on the PCLK output trace as this signal is edge sensitive and strobes the data. It is also assumed that the fanout of the Des is one. If additional loads need to be driven, a logic buffer or mux device is recommended.

### TYPICAL APPLICATION CONNECTION

[Figure 34](#) shows a typical application of the DS90UR905Q Ser in Pin control mode for a 65 MHz 24-bit Color Display Application. The LVDS outputs require 100 nF AC coupling capacitors to the line. The line driver includes internal termination. Bypass capacitors are placed near the power supply pins. At a minimum, four 0.1  $\mu$ F capacitors and a 4.7  $\mu$ F capacitor should be used for local device bypassing. System GPO (General Purpose Output) signals control the PDB and BISTEN pins. In this application the RFB pin is tied Low to latch data on the falling edge of the PCLK. The application assumes the companion Des (DS90UR906Q) therefore the configuration pins are also both tied Low. In this example the cable is long, therefore the VODSEL pin is tied High and a De-Emphasis value is selected by the resistor R1. The interface to the host is with 1.8 V LVCMOS levels, thus the VDDIO pin is connected also to the 1.8V rail. The Optional Serial Bus Control is not used in this example, thus the SCL, SDA and ID[x] pins are left open. A delay cap is placed on the PDB signal to delay the enabling of the device until power is stable.



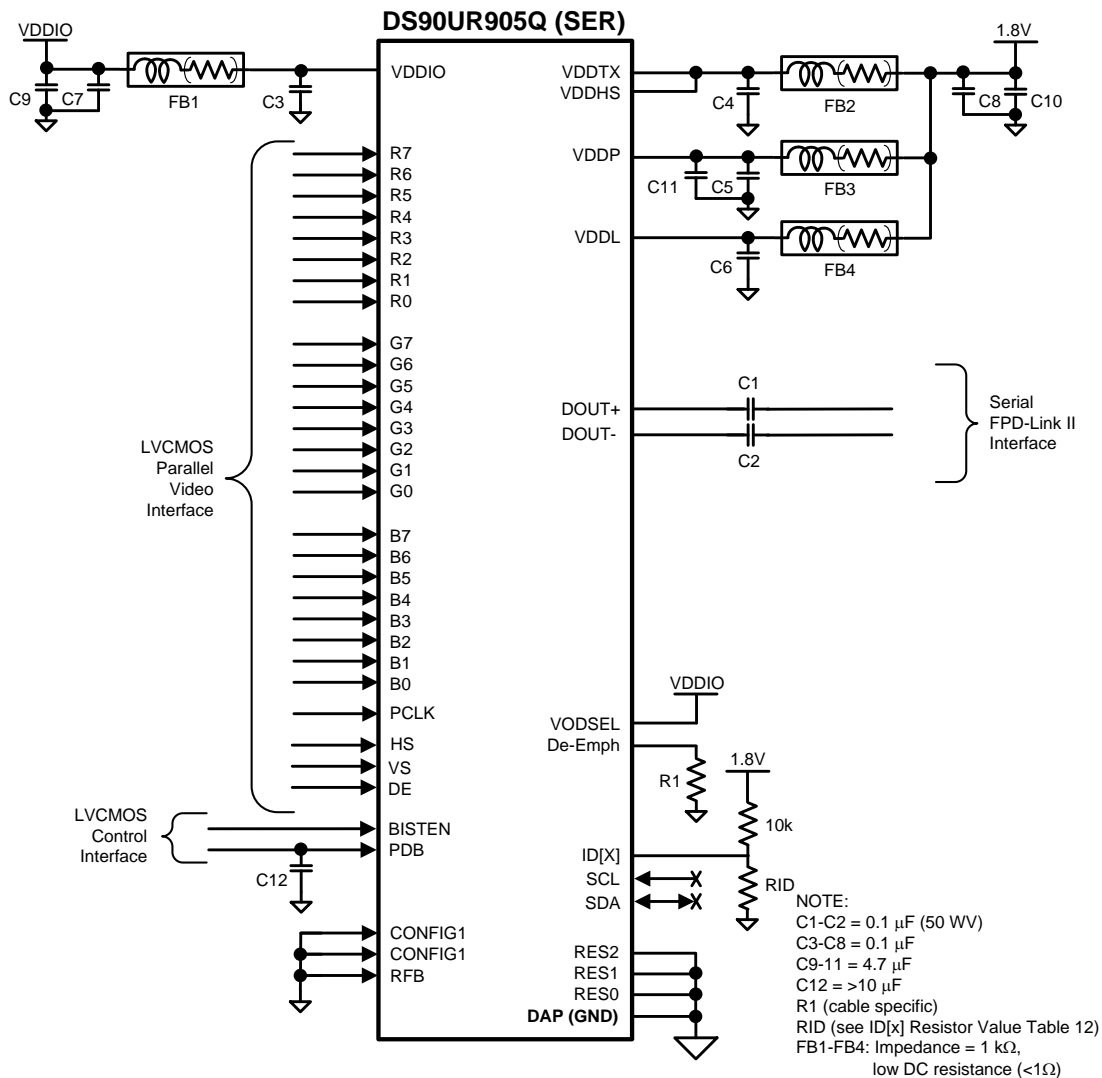


Figure 34. DS90UR905Q Typical Connection Diagram — Pin Control

Figure 35 shows a typical application of the DS90UR906Q Des in Pin/STRAP control mode for a 65 MHz 24-bit Color Display Application. The LVDS inputs utilize 100 nF coupling capacitors to the line and the Receiver provides internal termination. Bypass capacitors are placed near the power supply pins. At a minimum, seven 0.1  $\mu$ F capacitors and two 4.7  $\mu$ F capacitors should be used for local device bypassing. System GPO (General Purpose Output) signals control the PDB and the BISTEN pins. In this application the RRFB pin is tied Low to strobe the data on the falling edge of the PCLK.

Since the device in the Pin/STRAP mode, four 10 k $\Omega$  pull up resistors are used on the parallel output bus to select the desired device features. CONFIG[1:0] is set to 01'b for Normal Mode and Control Signal Filter ON, this is accomplished with the STRAP pull-up on B7. The receiver input equalizer is also enabled and set to provide 7.5 dB of gain, this is accomplished with EQ[3:0] set to 1001'b with STRAP pull ups on G4 and G7. To reduce parallel bus EMI, the SSCG feature is enabled and set to 30 kHz and  $\pm 1\%$  with SSC[3:0] set to 0010'b and a STRAP pull-up on R4. The desired features are set with the use of the four pull up resistors.

The interface to the target display is with 3.3V LVCMOS levels, thus the VDDIO pin is connected to the 3.3 V rail. The optional Serial Bus Control is not used in this example, thus the SCL, SDA and ID[x] pins are left open. A delay cap is placed on the PDB signal to delay the enabling of the device until power is stable.

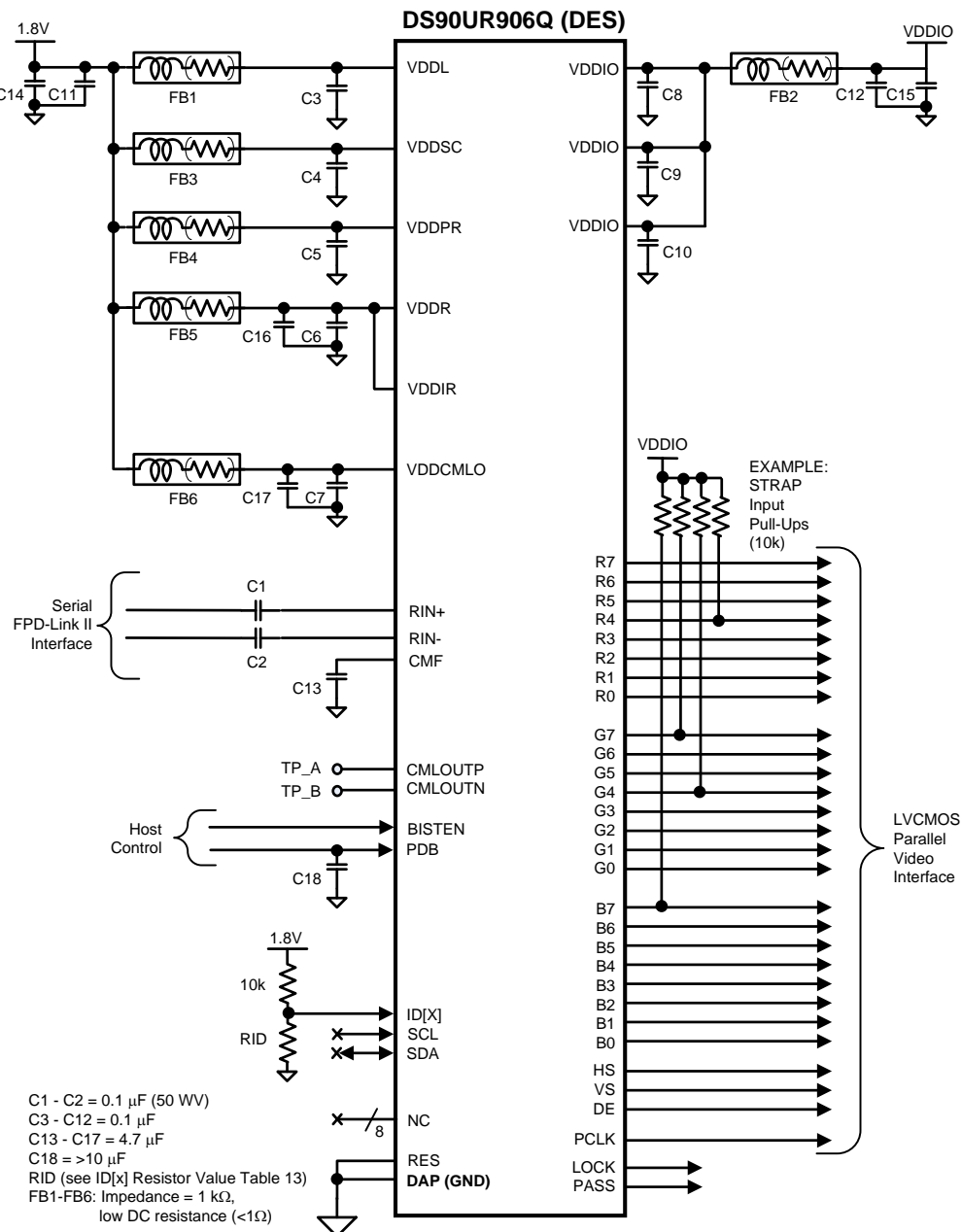


Figure 35. DS90UR906Q Typical Connection Diagram — Pin Control

## POWER UP REQUIREMENTS AND PDB PIN

The VDD ( $V_{DDn}$  and  $V_{DDIO}$ ) supply ramp should be faster than 1.5 ms with a monotonic rise. If slower than 1.5 ms then a capacitor on the PDB pin is needed to ensure PDB arrives after all the VDD have settled to the recommended operating voltage. When PDB pin is pulled to  $V_{DDIO}$ , it is recommended to use a 10 k $\Omega$  pull-up and a >10  $\mu$ F cap to GND to delay the PDB input signal.

## TRANSMISSION MEDIA

The Ser/Des chipset is intended to be used in a point-to-point configuration, through a PCB trace, or through twisted pair cable. The Ser and Des provide internal terminations providing a clean signaling environment. The interconnect for LVDS should present a differential impedance of 100 Ohms. Use cables and connectors that have matched differential impedance to minimize impedance discontinuities. Shielded or un-shielded cables may be used depending upon the noise environment and application requirements.

## LIVE LINK INSERTION

The Ser and Des devices support live pluggable applications. The automatic receiver lock to random data “plug & go” hot insertion capability allows the DS90UR906Q to attain lock to the active data stream during a live insertion event.

## PCB LAYOUT AND POWER SYSTEM CONSIDERATIONS

Circuit board layout and stack-up for the LVDS Ser/Des devices should be designed to provide low-noise power feed to the device. Good layout practice will also separate high frequency or high-level inputs and outputs to minimize unwanted stray noise pickup, feedback and interference. Power system performance may be greatly improved by using thin dielectrics (2 to 4 mils) for power / ground sandwiches. This arrangement provides plane capacitance for the PCB power system with low-inductance parasitics, which has proven especially effective at high frequencies, and makes the value and placement of external bypass capacitors less critical. External bypass capacitors should include both RF ceramic and tantalum electrolytic types. RF capacitors may use values in the range of 0.01 uF to 0.1 uF. Tantalum capacitors may be in the 2.2 uF to 10 uF range. Voltage rating of the tantalum capacitors should be at least 5X the power supply voltage being used.

Surface mount capacitors are recommended due to their smaller parasitics. When using multiple capacitors per supply pin, locate the smaller value closer to the pin. A large bulk capacitor is recommended at the point of power entry. This is typically in the 50uF to 100uF range and will smooth low frequency switching noise. It is recommended to connect power and ground pins directly to the power and ground planes with bypass capacitors connected to the plane with via on both ends of the capacitor. Connecting power or ground pins to an external bypass capacitor will increase the inductance of the path.

A small body size X7R chip capacitor, such as 0603, is recommended for external bypass. Its small body size reduces the parasitic inductance of the capacitor. The user must pay attention to the resonance frequency of these external bypass capacitors, usually in the range of 20-30 MHz. To provide effective bypassing, multiple capacitors are often used to achieve low impedance between the supply rails over the frequency of interest. At high frequency, it is also a common practice to use two vias from power and ground pins to the planes, reducing the impedance at high frequency.

Some devices provide separate power and ground pins for different portions of the circuit. This is done to isolate switching noise effects between different sections of the circuit. Separate planes on the PCB are typically not required. Pin Description tables typically provide guidance on which circuit blocks are connected to which power pin pairs. In some cases, an external filter may be used to provide clean power to sensitive circuits such as PLLs.

Use at least a four layer board with a power and ground plane. Locate LVCMOS signals away from the LVDS lines to prevent coupling from the LVCMOS lines to the LVDS lines. Closely-coupled differential lines of 100 Ohms are typically recommended for LVDS interconnect. The closely coupled lines help to ensure that coupled noise will appear as common-mode and thus is rejected by the receivers. The tightly coupled lines will also radiate less.

Information on the WQFN style package is provided in [SNOA401](#) “Leadless Leadframe Package (LLP) Application Report” (literature number [SNOA401](#)).

## LVDS INTERCONNECT GUIDELINES

See AN-1108 and AN-905 for full details.

- Use 100Ω coupled differential pairs
- Use the S/2S/3S rule in spacings
  - S = space between the pair
  - 2S = space between pairs

- 3S = space to LVCMOS signal
- Minimize the number of Vias
- Use differential connectors when operating above 500Mbps line speed
- Maintain balance of the traces
- Minimize skew within the pair
- Terminate as close to the TX outputs and RX inputs as possible

Additional general guidance can be found in the LVDS Owner's Manual - available in PDF format from the TI web site at: [www.ti.com/lvds](http://www.ti.com/lvds)

## ALTERNATE COLOR / DATA MAPPING

Color Mapped data Pin names are provided to specify a recommended mapping for 24-bit Color Applications. Seven [7] is assumed to be the MSB, and Zero [0] is assumed to be the LSB. While this is recommended it is not required. When connecting to earlier generations of FPD-Link II Ser and Des devices, a color mapping review is recommended to ensure the correct connectivity is obtained. Table 16 provides examples for interfacing to 18-bit applications with or without the video control signals embedded. The DS90UR906Q Des also provides additional flexibility with the MAP\_SEL feature as well.

**Table 16. Alternate Color / Data Mapping — See Text Below**

18-bit RGB	18-bit RGB	24-bit RGB	905 Pin Name	906 Pin Name	24-bit RGB	18-bit RGB	18-bit RGB
LSB R0	GP0	RO	RO	R0	R0	GP0	LSB R0
R1	GP1	R1	R1	R1	R1	GP1	R1
R2	R0	R2	R2	R2	R2	R0	R2
R3	R1	R3	R3	R3	R3	R1	R3
R4	R2	R4	R4	R4	R4	R2	R4
MSB R5	R3	R5	R5	R5	R5	R3	MSB R5
LSB G0	R4	R6	R6	R6	R6	R4	LSB G0
G1	R5	R7	R7	R7	R7	R5	G1
G2	GP2	G0	G0	G0	G0	GP2	G2
G3	GP3	G1	G1	G1	G1	GP3	G3
G4	GO	G2	G2	G2	G2	G0	G4
MSB G5	G1	G3	G3	G3	G3	G1	MSB G5
LSB B0	G2	G4	G4	G4	G4	G2	LSB B0
B1	G3	G5	G5	G5	G5	G3	B1
B2	G4	G6	G6	G6	G6	G4	B2
B3	G5	G7	G7	G7	G7	G5	B3
B4	GP4	B0	B0	B0	B0	GP4	B4
MSB B5	GP5	B1	B1	B1	B1	GP5	MSB B5
HS	B0	B2	B2	B2	B2	B0	HS
VS	B1	B3	B3	B3	B3	B1	VS
DE	B2	B4	B4	B4	B4	B2	DE
GP0	B3	B5	B5	B5	B5	B3	GP0
GP1	B4	B6	B6	B6	B6	B4	GP1
GP2	B5	B7	B7	B7	B7	B5	GP2
GND	HS	HS	HS	HS	HS	HS	GND
GND	VS	VS	VS	VS	VS	VS	GND
GND	DE	DE	DE	DE	DE	DE	GND
<b>Scenario 3<sup>(1)</sup></b>	<b>Scenario 2<sup>(2)</sup></b>	<b>Scenario 1<sup>(3)</sup></b>	<b>905 Pin Name</b>	<b>906 Pin Name</b>	<b>Scenario 1<sup>(3)</sup></b>	<b>Scenario 2<sup>(2)</sup></b>	<b>Scenario 3<sup>(1)</sup></b>

(1) Scenario 3 supports an 18-bit RGB color mapping, 3 un-embedded video control signals, and up to three general purpose signals.

(2) Scenario 2 supports an 18-bit RGB color mapping, 3 embedded video control signals, and up to six general purpose signals.

(3) Scenario 1 supports the 24-bit RGB color mapping, along with the 3 embedded video control signals. This is the native mode for the chipset.

## Revision History

- **2/01/2010**
- **DS90UR905Q DATASHEET LIMITS HAVE BEEN UPDATED PER CHARACTERIZATION RESULT AND ARE THE FINAL LIMITS**
- Updated TABLE 12: deleted ID[x] Address 7'b 110 1000 (h'68) (8'b 1101 0000 (h'D0))
- Updated TABLE 13: deleted ID[x] Address 7'b 111 0000 (h'70) (8'b 1110 0000 (h'E0))
- Updated DS90UR906Q Pin Diagram: strap changes on pin11, pin14, and pin42
- Updated DS90UR906Q Deserializer Pin Descriptions: RDS feature changed to OS\_PCLK and OS\_DATA. Added OP\_LOW feature.
- Changed strap pin 14 feature from "RDS" to "OS\_DATA" (Output Slew\_DATA)
- Added strap to pin 11 "OS\_PCLK" (Output Slew\_PCLK)
- Added strap to pin 42 "OP\_LOW" (Output LOW)
- Changed Table 14: ADD \ 1 \ bit \ 6:0 \ ID[x]: deleted Device ID 7b'1101 00 (h'68). Only four (4) IDs will be available.
- Changed Table 15: ADD \ 0 \ bit \ 6 \ OSS\_SEL: "OSS\_SEL" changed feature to "OS\_PCLK" (Output Slew\_PCLK). OSS\_SEL moved to ADD \ 2 \ bit \ 6 \.
- Changed Table 15: ADD \ 0 \ bit \ 5 \ RDS: changed "RDS" feature to OS\_DATA (Output Slew\_DATA)
- Changed Table 15: ADD \ 1 \ bit \ 6:0 \ ID[x]: deleted Device ID 7b'1110 00 (h'70). Only four (4) IDs will be available.
- Changed Table 15: ADD \ 2 \ bit \ 7 \ Reserved: changed "Reserved" to "OP\_LOW"
- Changed Table 15: ADD \ 2 \ bit \ 6 \ Reserved: changed "Reserved" to "OSS\_SEL"
- Updated DS90UR905Q Typical Connection Diagram — Pin Control. Ref 30102044
- Updated DS90UR906Q Typical Connection Diagram — Pin Control. Ref 30102045
- Created OP\_LOW timing figure 26. Ref 30102065.
- Created OP\_LOW timing figure 27. Ref 30102066.
- Removed IDDT3 and IDDIOT3 (RANDOM pattern) because the limits are the same as checker board pattern.
- **2/08/2010**
- Minor corrections: Changed I<sub>in</sub> from +/-10uA to +/-15uA in Serial Control bus section; added note 11 to: t<sub>xZR</sub>, t<sub>PLD</sub>, t<sub>SD</sub>, t<sub>DJIT</sub> and VOL (in Serial Control Bus Characteristics).
- **2/09/2010**
- Added "Note: During initial power-up, a delay of 10ms will be required before the I2C will respond." in Optional Serial Bus Control description section.
- **2/11/2010**
- Removed Note 11 on t<sub>DJIT</sub> and max values.
- **3/5/2010**
- Added reference to soldering profile.
- Added ESD CDM and ESD MM values.
- Updated  $\theta_{JA}$  value.
- **5/25/2010**
- **DS90UR906 DATASHEET LIMITS HAVE BEEN UPDATED PER CHARACTERIZATION RESULTS**
- Corrected TABLE 14. SERIALIZER — Serial Bus Control Registers: register 5 from RFB to VODSEL and register 4 from VODSEL to RFB.
- **8/9/2010**
- Modified order information to include NOPB designation in NSPN column (replaced NSID column).
- Corrected on Page 10. ESD Rating to IEC 61000-4-2 from ISO 10605 (duplication).
- Added on Page 17. RPU = 10k $\Omega$  condition for the Serial Control Bus Characteristics of t<sub>R</sub> and t<sub>F</sub>.
- Removed "Data Randomization & Scrambling", Noise Margin" and "Typical Performance Curves" sections.
- **1/13/2011**
- Modified ESD to include IEC condition (330 Ohm, 150pF).
- Updated deserializer parameters: IDD1, IDDZ, IDDIOZ, IDDR, VOH, VOL, t<sub>ROS</sub>, t<sub>RDC</sub>.

- Updated figures 14 and 15 to reflect data measurement at  $VDDIO/2$
- Updated fig 35 — C13 changed to 4.7uF
- PASS pin functional change (Tables 8 & 9, Fig 23 & 24)

## REVISION HISTORY

Changes from Revision F (April 2013) to Revision G	Page
• Changed layout of National Data Sheet to TI format .....	<a href="#">46</a>

## PACKAGING INFORMATION

Orderable Device	Status (1)	Package Type	Package Drawing	Pins	Package Qty	Eco Plan (2)	Lead/Ball Finish	MSL Peak Temp (3)	Op Temp (°C)	Top-Side Markings (4)	Samples
DS90UR905QSQ/NOPB	ACTIVE	WQFN	RHS	48	1000	Green (RoHS & no Sb/Br)	CU SN	Level-3-260C-168 HR	-40 to 105	UR905QSQ	<a href="#">Samples</a>
DS90UR905QSQE/NOPB	ACTIVE	WQFN	RHS	48	250	Green (RoHS & no Sb/Br)	CU SN	Level-3-260C-168 HR	-40 to 105	UR905QSQ	<a href="#">Samples</a>
DS90UR905QSQX/NOPB	ACTIVE	WQFN	RHS	48	2500	Green (RoHS & no Sb/Br)	CU SN	Level-3-260C-168 HR	-40 to 105	UR905QSQ	<a href="#">Samples</a>
DS90UR906QSQ/NOPB	ACTIVE	WQFN	NKB	60	1000	Green (RoHS & no Sb/Br)	CU SN	Level-3-260C-168 HR	-40 to 105	UR906QSQ	<a href="#">Samples</a>
DS90UR906QSQE/NOPB	ACTIVE	WQFN	NKB	60	250	Green (RoHS & no Sb/Br)	CU SN	Level-3-260C-168 HR	-40 to 105	UR906QSQ	<a href="#">Samples</a>
DS90UR906QSQX/NOPB	ACTIVE	WQFN	NKB	60	2000	Green (RoHS & no Sb/Br)	CU SN	Level-3-260C-168 HR	-40 to 105	UR906QSQ	<a href="#">Samples</a>

(1) The marketing status values are defined as follows:

**ACTIVE:** Product device recommended for new designs.

**LIFEBUY:** TI has announced that the device will be discontinued, and a lifetime-buy period is in effect.

**NRND:** Not recommended for new designs. Device is in production to support existing customers, but TI does not recommend using this part in a new design.

**PREVIEW:** Device has been announced but is not in production. Samples may or may not be available.

**OBSOLETE:** TI has discontinued the production of the device.

(2) Eco Plan - The planned eco-friendly classification: Pb-Free (RoHS), Pb-Free (RoHS Exempt), or Green (RoHS & no Sb/Br) - please check <http://www.ti.com/productcontent> for the latest availability information and additional product content details.

**TBD:** The Pb-Free/Green conversion plan has not been defined.

**Pb-Free (RoHS):** TI's terms "Lead-Free" or "Pb-Free" mean semiconductor products that are compatible with the current RoHS requirements for all 6 substances, including the requirement that lead not exceed 0.1% by weight in homogeneous materials. Where designed to be soldered at high temperatures, TI Pb-Free products are suitable for use in specified lead-free processes.

**Pb-Free (RoHS Exempt):** This component has a RoHS exemption for either 1) lead-based flip-chip solder bumps used between the die and package, or 2) lead-based die adhesive used between the die and leadframe. The component is otherwise considered Pb-Free (RoHS compatible) as defined above.

**Green (RoHS & no Sb/Br):** TI defines "Green" to mean Pb-Free (RoHS compatible), and free of Bromine (Br) and Antimony (Sb) based flame retardants (Br or Sb do not exceed 0.1% by weight in homogeneous material)

(3) MSL, Peak Temp. -- The Moisture Sensitivity Level rating according to the JEDEC industry standard classifications, and peak solder temperature.

(4) Multiple Top-Side Markings will be inside parentheses. Only one Top-Side Marking contained in parentheses and separated by a "~" will appear on a device. If a line is indented then it is a continuation of the previous line and the two combined represent the entire Top-Side Marking for that device.



**Important Information and Disclaimer:** The information provided on this page represents TI's knowledge and belief as of the date that it is provided. TI bases its knowledge and belief on information provided by third parties, and makes no representation or warranty as to the accuracy of such information. Efforts are underway to better integrate information from third parties. TI has taken and continues to take reasonable steps to provide representative and accurate information but may not have conducted destructive testing or chemical analysis on incoming materials and chemicals. TI and TI suppliers consider certain information to be proprietary, and thus CAS numbers and other limited information may not be available for release.

In no event shall TI's liability arising out of such information exceed the total purchase price of the TI part(s) at issue in this document sold by TI to Customer on an annual basis.

**TAPE AND REEL INFORMATION**


\*All dimensions are nominal

Device	Package Type	Package Drawing	Pins	SPQ	Reel Diameter (mm)	Reel Width W1 (mm)	A0 (mm)	B0 (mm)	K0 (mm)	P1 (mm)	W (mm)	Pin1 Quadrant
DS90UR905QSQ/NOPB	WQFN	RHS	48	1000	330.0	16.4	7.3	7.3	1.3	12.0	16.0	Q1
DS90UR905QSQE/NOPB	WQFN	RHS	48	250	178.0	16.4	7.3	7.3	1.3	12.0	16.0	Q1
DS90UR905QSQX/NOPB	WQFN	RHS	48	2500	330.0	16.4	7.3	7.3	1.3	12.0	16.0	Q1
DS90UR906QSQ/NOPB	WQFN	NKB	60	1000	330.0	16.4	9.3	9.3	1.3	12.0	16.0	Q1
DS90UR906QSQE/NOPB	WQFN	NKB	60	250	178.0	16.4	9.3	9.3	1.3	12.0	16.0	Q1
DS90UR906QSQX/NOPB	WQFN	NKB	60	2000	330.0	16.4	9.3	9.3	1.3	12.0	16.0	Q1

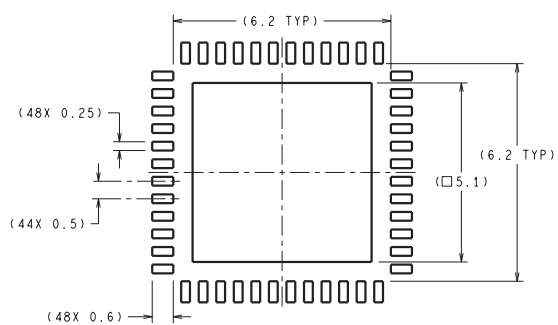
## TAPE AND REEL BOX DIMENSIONS



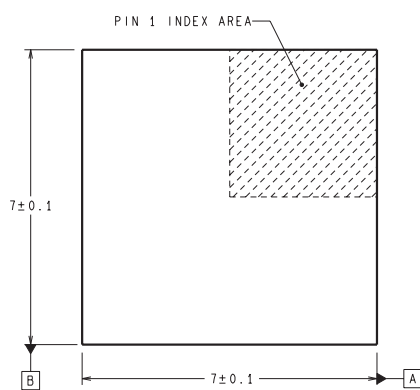
\*All dimensions are nominal

Device	Package Type	Package Drawing	Pins	SPQ	Length (mm)	Width (mm)	Height (mm)
DS90UR905QSQ/NOPB	WQFN	RHS	48	1000	367.0	367.0	38.0
DS90UR905QSQE/NOPB	WQFN	RHS	48	250	213.0	191.0	55.0
DS90UR905QSQX/NOPB	WQFN	RHS	48	2500	367.0	367.0	38.0
DS90UR906QSQ/NOPB	WQFN	NKB	60	1000	367.0	367.0	38.0
DS90UR906QSQE/NOPB	WQFN	NKB	60	250	213.0	191.0	55.0
DS90UR906QSQX/NOPB	WQFN	NKB	60	2000	367.0	367.0	38.0

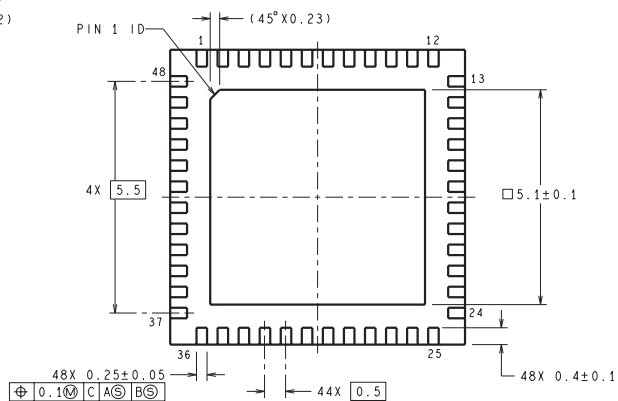
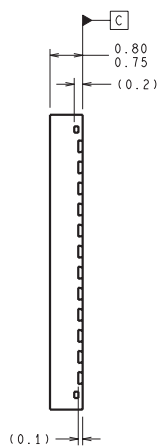
RHS0048A



RECOMMENDED LAND PATTERN

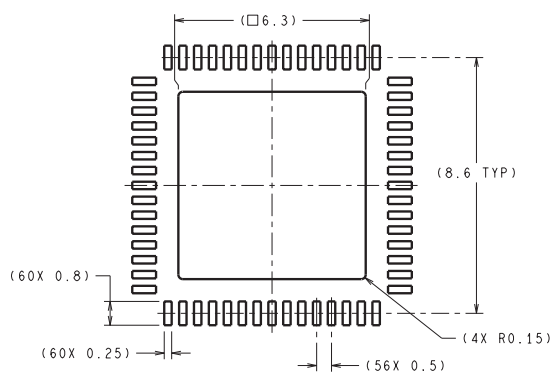


DIMENSIONS ARE IN MILLIMETERS  
DIMENSIONS IN ( ) FOR REFERENCE ONLY

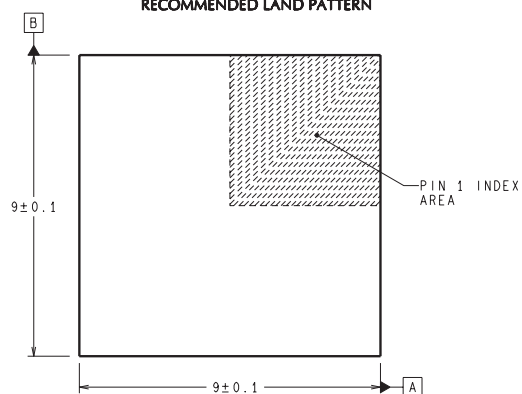


SQA48A (Rev B)

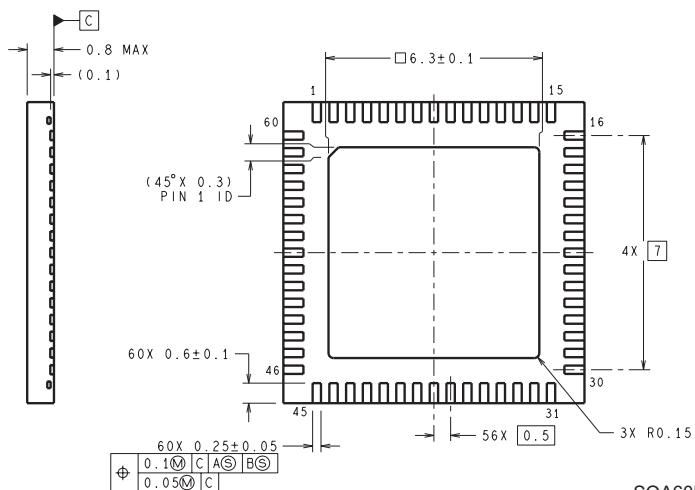
NKB0060B



## RECOMMENDED LAND PATTERN



DIMENSIONS ARE IN MILLIMETERS  
DIMENSION IN ( ) FOR REFERENCE ONLY



SQA60B (Rev B)

## IMPORTANT NOTICE

Texas Instruments Incorporated and its subsidiaries (TI) reserve the right to make corrections, enhancements, improvements and other changes to its semiconductor products and services per JESD46, latest issue, and to discontinue any product or service per JESD48, latest issue. Buyers should obtain the latest relevant information before placing orders and should verify that such information is current and complete. All semiconductor products (also referred to herein as "components") are sold subject to TI's terms and conditions of sale supplied at the time of order acknowledgment.

TI warrants performance of its components to the specifications applicable at the time of sale, in accordance with the warranty in TI's terms and conditions of sale of semiconductor products. Testing and other quality control techniques are used to the extent TI deems necessary to support this warranty. Except where mandated by applicable law, testing of all parameters of each component is not necessarily performed.

TI assumes no liability for applications assistance or the design of Buyers' products. Buyers are responsible for their products and applications using TI components. To minimize the risks associated with Buyers' products and applications, Buyers should provide adequate design and operating safeguards.

TI does not warrant or represent that any license, either express or implied, is granted under any patent right, copyright, mask work right, or other intellectual property right relating to any combination, machine, or process in which TI components or services are used. Information published by TI regarding third-party products or services does not constitute a license to use such products or services or a warranty or endorsement thereof. Use of such information may require a license from a third party under the patents or other intellectual property of the third party, or a license from TI under the patents or other intellectual property of TI.

Reproduction of significant portions of TI information in TI data books or data sheets is permissible only if reproduction is without alteration and is accompanied by all associated warranties, conditions, limitations, and notices. TI is not responsible or liable for such altered documentation. Information of third parties may be subject to additional restrictions.

Resale of TI components or services with statements different from or beyond the parameters stated by TI for that component or service voids all express and any implied warranties for the associated TI component or service and is an unfair and deceptive business practice. TI is not responsible or liable for any such statements.

Buyer acknowledges and agrees that it is solely responsible for compliance with all legal, regulatory and safety-related requirements concerning its products, and any use of TI components in its applications, notwithstanding any applications-related information or support that may be provided by TI. Buyer represents and agrees that it has all the necessary expertise to create and implement safeguards which anticipate dangerous consequences of failures, monitor failures and their consequences, lessen the likelihood of failures that might cause harm and take appropriate remedial actions. Buyer will fully indemnify TI and its representatives against any damages arising out of the use of any TI components in safety-critical applications.

In some cases, TI components may be promoted specifically to facilitate safety-related applications. With such components, TI's goal is to help enable customers to design and create their own end-product solutions that meet applicable functional safety standards and requirements. Nonetheless, such components are subject to these terms.

No TI components are authorized for use in FDA Class III (or similar life-critical medical equipment) unless authorized officers of the parties have executed a special agreement specifically governing such use.

Only those TI components which TI has specifically designated as military grade or "enhanced plastic" are designed and intended for use in military/aerospace applications or environments. Buyer acknowledges and agrees that any military or aerospace use of TI components which have **not** been so designated is solely at the Buyer's risk, and that Buyer is solely responsible for compliance with all legal and regulatory requirements in connection with such use.

TI has specifically designated certain components as meeting ISO/TS16949 requirements, mainly for automotive use. In any case of use of non-designated products, TI will not be responsible for any failure to meet ISO/TS16949.

### Products

Audio	<a href="http://www.ti.com/audio">www.ti.com/audio</a>
Amplifiers	<a href="http://amplifier.ti.com">amplifier.ti.com</a>
Data Converters	<a href="http://dataconverter.ti.com">dataconverter.ti.com</a>
DLP® Products	<a href="http://www.dlp.com">www.dlp.com</a>
DSP	<a href="http://dsp.ti.com">dsp.ti.com</a>
Clocks and Timers	<a href="http://www.ti.com/clocks">www.ti.com/clocks</a>
Interface	<a href="http://interface.ti.com">interface.ti.com</a>
Logic	<a href="http://logic.ti.com">logic.ti.com</a>
Power Mgmt	<a href="http://power.ti.com">power.ti.com</a>
Microcontrollers	<a href="http://microcontroller.ti.com">microcontroller.ti.com</a>
RFID	<a href="http://www.ti-rfid.com">www.ti-rfid.com</a>
OMAP Applications Processors	<a href="http://www.ti.com/omap">www.ti.com/omap</a>
Wireless Connectivity	<a href="http://www.ti.com/wirelessconnectivity">www.ti.com/wirelessconnectivity</a>

### Applications

Automotive and Transportation	<a href="http://www.ti.com/automotive">www.ti.com/automotive</a>
Communications and Telecom	<a href="http://www.ti.com/communications">www.ti.com/communications</a>
Computers and Peripherals	<a href="http://www.ti.com/computers">www.ti.com/computers</a>
Consumer Electronics	<a href="http://www.ti.com/consumer-apps">www.ti.com/consumer-apps</a>
Energy and Lighting	<a href="http://www.ti.com/energy">www.ti.com/energy</a>
Industrial	<a href="http://www.ti.com/industrial">www.ti.com/industrial</a>
Medical	<a href="http://www.ti.com/medical">www.ti.com/medical</a>
Security	<a href="http://www.ti.com/security">www.ti.com/security</a>
Space, Avionics and Defense	<a href="http://www.ti.com/space-avionics-defense">www.ti.com/space-avionics-defense</a>
Video and Imaging	<a href="http://www.ti.com/video">www.ti.com/video</a>

### TI E2E Community

[e2e.ti.com](http://e2e.ti.com)