

5

4

3

2

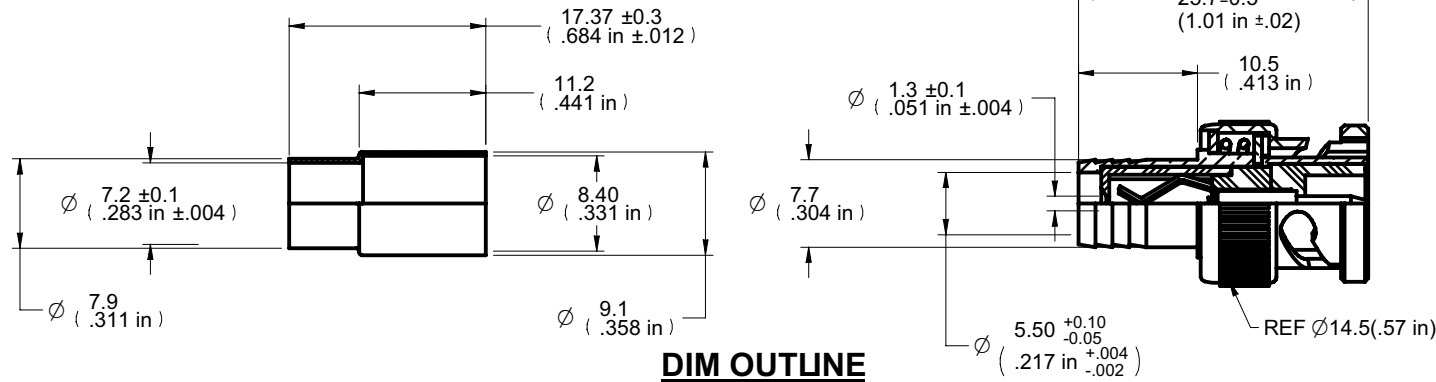
1

受控 CONTROLLED DOCUMENT					
编号 P/N	CP885-CUST	版本 Rev	01	日期 Rel'd Date	Apr29,09

DRAWING NO. CP885-CUST					
REVISIONS					
01 OFFICIAL RELEASE					
02-20-09	J	W	B	T	Thomas Chow



Description: Straight BNC Crimp Plug For RG6 Style Cable
 Part No: CP885
 Application: For RG6 Cable
 Crimp Tool: 24-321P/24-8856P
 Impedance: 50 Ohms
 Frequency Range: 0-4 GHz
 Material: Body: Brass Nickel plated
 Contact: Brass Gold plated
 Insulator: Teflon
 Crimp Sleeve: Brass Nickel plated
 Couling Nut: Zinc Nickel plated
 RoHS Compliance: Yes
 Technical Detail: Refer to Emerson Document P/N 27-0000



CUSTOMER COPY

TOLERANCE UNLESS OTHERWISE SPECIFIED		DRAWN BY IVON.W	DATE 02-20-09
DECIMALS	mm	CHECKED BY BETTY.YU	DATE 02-20-09
X	± 0.5	APPROVED BY THOMAS	DATE 02-20-09
X.X	± 0.3	U/M	mm
X.XX	± 0.1		
ANGLES	± 0.5°		

Connectivity Solutions	
TITLE STRAIGHT BNC CRIMP PLUG FOR RG6 STYLE CABLE	
SHEET 1 OF 1	DRAWING NO. CP885-CUST
SIZE A	

THIS DRAWING WAS PRODUCED BY COMPUTER, DO NOT SCALE DRAWING OR UPDATE MANUALLY.

5

4

3

2

1