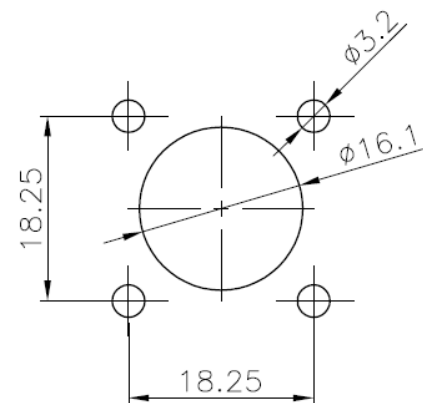
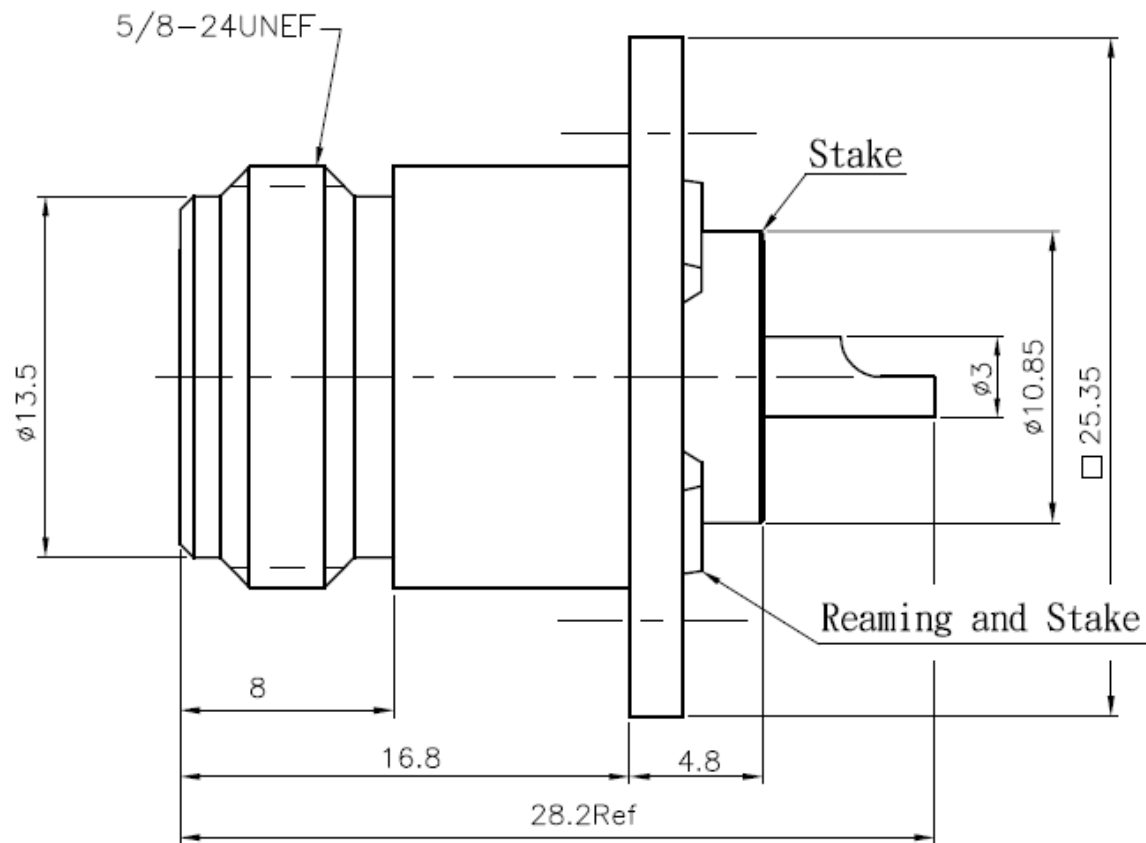







DESCRIPTION: CPAD801 N (F) TO LUG, FLANGE MNT  
 MODEL NUMBER: 26-8011  
 APPLICATION: ADAPTER  
 CRIMP TOOL: N/A  
 IMPEDANCE: N/A  
 FREQUENCY RANGE: N/A  
 MATERIAL: BODY BRASS NICKEL PLATED  
 INSULATOR POM  
 CONTACT BRASS NICKEL PLATED

RoHS COMPLIANCE: YES

TECHNICAL DETAIL: REFER TO EMERSON DOCUMENT P/N 26-0000



Recommend Mounting Hole

 <b>EMERSON</b> Network Power Connectivity Solutions	3RD ANGLE PROJECTION 	<b>AIM-Cambridge</b>		
	 2002/95/EC	Title: N Type 4 Hole Flange MT Jack Receptacle		
	UNLESS OTHERWISE SPECIFIED UNITS: METRIC  XX ±.51 XXX ±.127 ANGLES ±2°	Model No.  26-8011		
	INTERPRET DRAWING IN ACCORDANCE WITH ASME Y14.5-2009	Size A	DO NOT SCALE DRAWING	Date: 8/14/2013