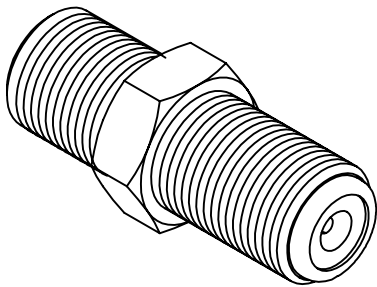
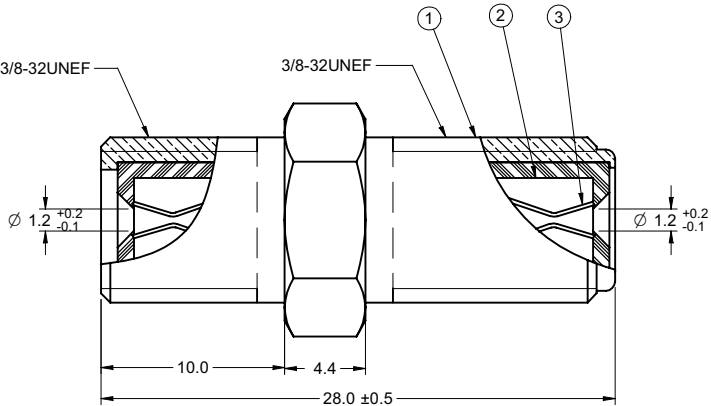
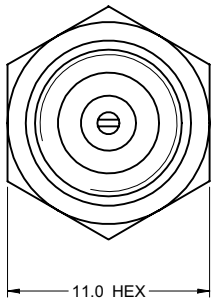


PART NUMBER	ITEM ① BODY	ITEM ② INSULATOR	ITEM ③ CONTACT
25-7200L	BRASS NICKEL PLATED	PE	P BRONZE TIN PLATED

受控 CONTROLLED DOCUMENT					
编号 P/N	25-7200L	版本 Rev	0E	日期 Rel'd Date	Mar 24,08



NOTES:
TECHNICAL REQUIREMENT REFER TO EMERSON NET WORK POWER CONNECTIVITY SOLUTIONS DOUCUMENT P/N 25-0000.

TOLERANCE UNLESS OTHERWISE SPECIFIED		DRAWN BY IVON	DATE 07-03-07
DECIMALS	mm	CHECKED BY LINDA	DATE 07-03-07
X	± 0.3	APPROVED BY THOMAS	DATE 08-07-07
X.X	± 0.2		
X.XX	± 0.1		
ANGLES	± 0.5°	U/M	mm
THIS DRAWING WAS PRODUCED BY COMPUTER, DO NOT SCALE DRAWING OR UPDATE MANUALLY.			

SHEET 1 OF 1		DRAWING NO. 25-7200L	SIZE C
-----------------	--	-------------------------	-----------

DRAWING NO.
25-7200L

REVISIONS

A	RELEASE FOR QUOTATION	04-26-06	Y	U	W	T		
B	CHANGE SOME TOLERANCE		Y	U	W	T		
C	ADD NOTES 4 & 5	10-31-06	Y	U	L	T		
D	CHANGE TWO Ø1.2 ^{+0.2} _{-0.1} WAS Ø1.20	11-20-06	Y	U	W	T		
E	UPDATE NOTES.	07-03-07	W	W	T			

Thomas Chow
2007.08.17
14:56:33 +08'00'

THIS DRAWING TO BE INTERPRETED
PER ANSI Y 14.5M - 1994

COMPANY CONFIDENTIAL

Connectivity
Solutions

TITLE
F-81 SPLICE EXTRA LONG BARREL