

# Low-Voltage, Sub-Ohm, SPDT Analog Switch

## DESCRIPTION

The DG2711 is a sub-ohm single-pole/double-throw monolithic CMOS analog switch designed for high performance switching of analog signals. Combining low power, high speed ( $t_{ON}$ : 25 ns,  $t_{OFF}$ : 14 ns), low on-resistance ( $R_{DS(on)}$ : 0.44  $\Omega$ ) and small physical size (SC70), the DG2711 is ideal for portable and battery powered applications requiring high performance and efficient use of board space.

The DG2711 is built on Vishay Siliconix's low voltage submicron CMOS process. An epitaxial layer prevents latchup. Break-before-make is guaranteed for DG2711.

Each switch conducts equally well in both directions when on, and blocks up to the power supply level when off.

As a committed partner to the community and the environment, Vishay Siliconix manufactures this product with the lead (Pb)-free device terminations. For analog switching products manufactured with 100 % matte tin device terminations, the lead (Pb)-free "-E3" suffix is being used as a designator.

## FEATURES

- Low voltage operation (1.6 V to 3.6 V)
- Low on-resistance -  $R_{DS(on)}$ : 0.44  $\Omega$  typ.
- Fast switching -  $t_{ON}$ : 25 ns,  $t_{OFF}$ : 14 ns
- Low leakage
- TTL/CMOS compatible
- 6-pin SC-70 package
- Compliant to RoHS directive 2002/95/EC


**RoHS**  
COMPLIANT

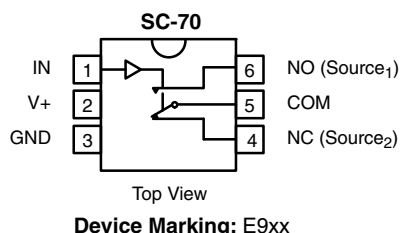
## BENEFITS

- Reduced power consumption
- Simple logic interface
- High accuracy
- Reduce board space

## APPLICATIONS

- Cellular phones
- Communication systems
- Portable test equipment
- Battery operated systems
- Sample and hold circuits

## FUNCTIONAL BLOCK DIAGRAM AND PIN CONFIGURATION



## TRUTH TABLE

Logic	NC	NO
0	ON	OFF
1	OFF	ON

## ORDERING INFORMATION

Temp. Range	Package	Part Number
- 40 to 85 °C	SC70-6	DG2711DL-T1-E3

**ABSOLUTE MAXIMUM RATINGS**

Parameter	Limit	Unit
Reference V+ to GND	- 0.3 to + 4	V
IN, COM, NC, NO <sup>a</sup>	- 0.3 to (V+ + 0.3)	
Continuous Current (NO, NC and COM Pins)	± 200	mA
Peak Current (Pulsed at 1 ms, 10 % duty cycle)	± 300	
Storage Temperature	(D Suffix)	°C
Power Dissipation (Packages) <sup>b</sup>	6-Pin SO70 <sup>c</sup>	mW

Notes:

a. Signals on NC, NO, or COM or IN exceeding V+ will be clamped by internal diodes. Limit forward diode current to maximum current ratings.

b. All leads welded or soldered to PC board.

c. Derate 3.1 mW/°C above 70 °C.

Stresses beyond those listed under "Absolute Maximum Ratings" may cause permanent damage to the device. These are stress ratings only, and functional operation of the device at these or any other conditions beyond those indicated in the operational sections of the specifications is not implied. Exposure to absolute maximum rating conditions for extended periods may affect device reliability.

**SPECIFICATIONS (V+ = 1.8 V)**

Parameter	Symbol	Test Conditions Otherwise Unless Specified V+ = 1.8 V, ± 10 %, VIN = 0.4 V or 1.0 V <sup>e</sup>	Temp. <sup>a</sup>	Limits - 40 °C to 85 °C			Unit
				Min. <sup>b</sup>	Typ. <sup>c</sup>	Max. <sup>b</sup>	
Analog Switch							
Analog Signal Range <sup>d</sup>	VNO, VNC, VCOM		Full	0		V+	V
On-Resistance	RON	V+ = 1.8 V, VCOM = 0.9 V INO, INC = 100 mA	Room Full		0.8	2.0 2.5	Ω
Switch Off Leakage Current <sup>f</sup>	INO(off) INC(off)	V+ = 2.2 V, VNO, VNC = 0.2 V/2 V, VCOM = 2 V/0.2 V	Room Full <sup>d</sup>	- 1 - 10		1 10	nA
	ICOM(off)		Room Full <sup>d</sup>	- 1 - 10		1 10	
Channel-On Leakage Current <sup>f</sup>	ICOM(on)	V+ = 2.2 V, VNO, VNC = VCOM = 0.2 V/2 V	Room Full <sup>d</sup>	- 1 - 10		1 10	
Digital Control							
Input High Voltage	VINH		Full	1.0			V
Input Low Voltage	VINL		Full			0.4	
Input Capacitance <sup>d</sup>	Cin		Full		5		pF
Input Current <sup>f</sup>	IINL or IINH	VIN = 0 or V+	Full	- 1		1	μA
Dynamic Characteristics							
Turn-On Time <sup>d</sup>	tON	VNO or VNC = 1.5 V, RL = 300 Ω, CL = 35 pF Figures1 and 2	Room Full <sup>d</sup>		36	60 62	ns
Turn-Off Time <sup>d</sup>	tOFF		Room Full		22	42 44	
Break-Before-Make Time <sup>d</sup>	td		Room	3			
Charge Injection <sup>d</sup>	QINJ	CL = 1 nF, VGEN = 0 V, RGEN = 0 Ω, figure 3	Room		20		pC
Off-Isolation <sup>d</sup>	OIRR	RL = 50 Ω, CL = 5 pF, f = 1 MHz	Room		- 56		dB
Crosstalk <sup>d</sup>	XTALK		Room		- 56		
NO, NC Off Capacitance <sup>d</sup>	CNO(off) CNC(off)	VIN = 0 or V+, f = 1 MHz	Room		73		pF
Channel-On Capacitance <sup>d</sup>	CON		Room		167		



SPECIFICATIONS (V+ = 3.0 V)							
Parameter	Symbol	Test Conditions Otherwise Unless Specified V+ = 3 V, ± 10 %,VIN = 0.5 V or 1.4 V <sup>e</sup>	Temp. <sup>a</sup>	Limits - 40 °C to 85 °C			Unit
				Min. <sup>b</sup>	Typ. <sup>c</sup>	Max. <sup>b</sup>	
Analog Switch							
Analog Signal Range <sup>d</sup>	VNO, VNC, VCOM		Full	0		V+	V
On-Resistance	RON	V+ = 2.7 V, VCOM = 1.5 V INO, INC = 100 mA	Room Full		0.44	0.6 0.7	Ω
RON Flatness	RON Flatness	V+ = 2.7 V, VCOM = 0.6 V, 1.5 V INO, INC = 100 mA	Room		0.14	0.2	
RON Match	ΔRON	V+ = 2.7 V, VCOM = 1.5 V INO, INC = 100 mA	Room			0.07	
Switch Off Leakage Current	INO(off) INC(off)	V+ = 3.3 V, VNO, VNC = 0.3 V/3 V, VCOM = 3 V/0.3 V	Room Full	- 1 - 10		1 10	nA
	ICOM(off)		Room Full	- 1 - 10		1 10	
Channel-On Leakage Current	ICOM(on)	V+ = 3.3 V, VNO, VNC = VCOM = 0.3 V/3 V	Room Full	- 1 - 10		1 10	
Digital Control							
Input High Voltage	VINH		Full	1.4			V
Input Low Voltage	VINL		Full			0.5	
Input Capacitance <sup>d</sup>	Cin		Full		5		pF
Input Current <sup>f</sup>	IINL or IINH	VIN = 0 or V+	Full	- 1		1	μA
Dynamic Characteristics							
Turn-On Time	tON	VNO or VNC = 1.5 V, RL = 300 Ω, CL = 35 pF figures 1 and 2	Room Full		25	46 48	ns
Turn-Off Time	tOFF		Room Full		14	38 40	
Break-Before-Make Time	td		Room	1			
Charge Injection <sup>d</sup>	QINJ	CL = 1 nF, VGEN = 0 V, RGEN = 0 Ω, figure 3	Room		28		pC
Off-Isolation <sup>d</sup>	OIRR	RL = 50 Ω, CL = 5 pF, f = 1 MHz	Room		- 56		dB
Crosstalk <sup>d</sup>	XTALK		Room		- 56		
NO, NC Off Capacitance <sup>d</sup>	CNO(off) CNC(off)	VIN = 0 or V+, f = 1 MHz	Room		70		pF
Channel-On Capacitance <sup>d</sup>	CON		Room		163		
Power Supply							
Power Supply Range	V+			1.6		3.6	V
Power Supply Current	I+	V+ = 3.6 V, VIN = 0 or V+			0.01	1.0	μA

Notes:

a. Room = 25 °C, full = as determined by the operating suffix.

b. The algebraic convention whereby the most negative value is a minimum and the most positive a maximum, is used in this data sheet.

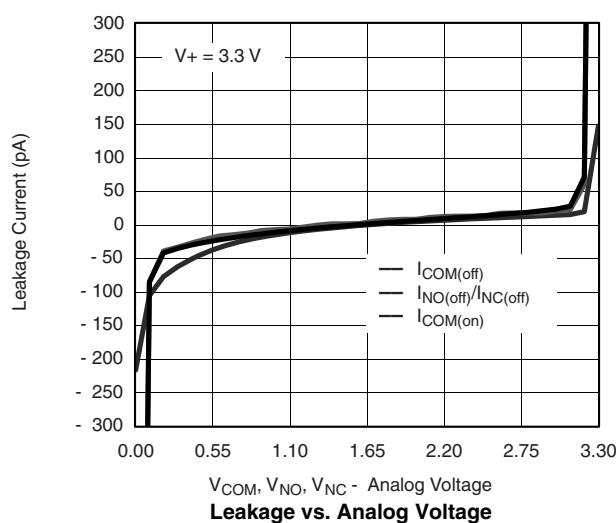
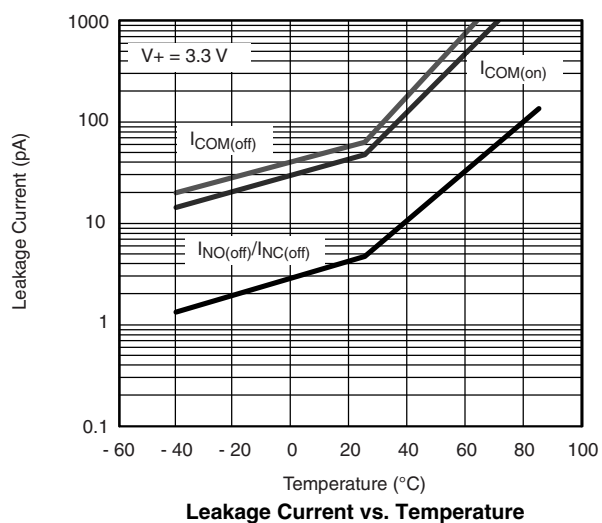
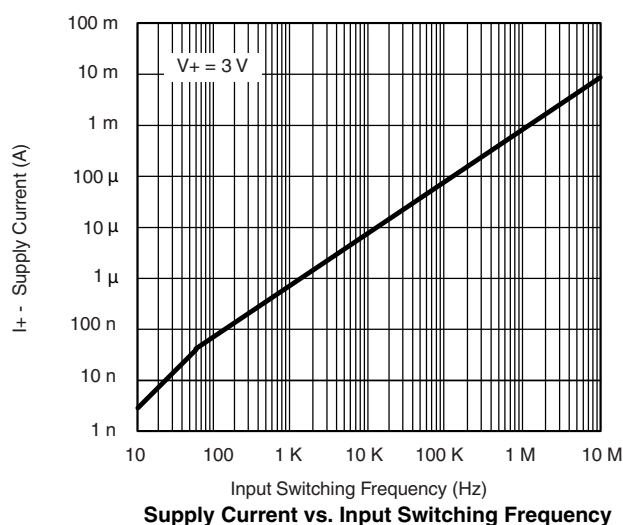
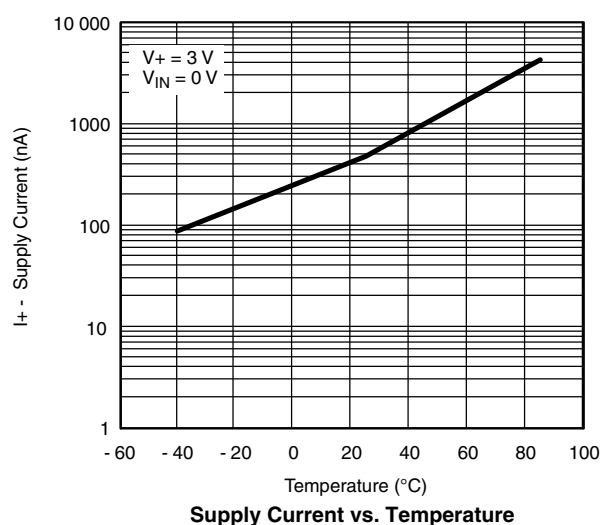
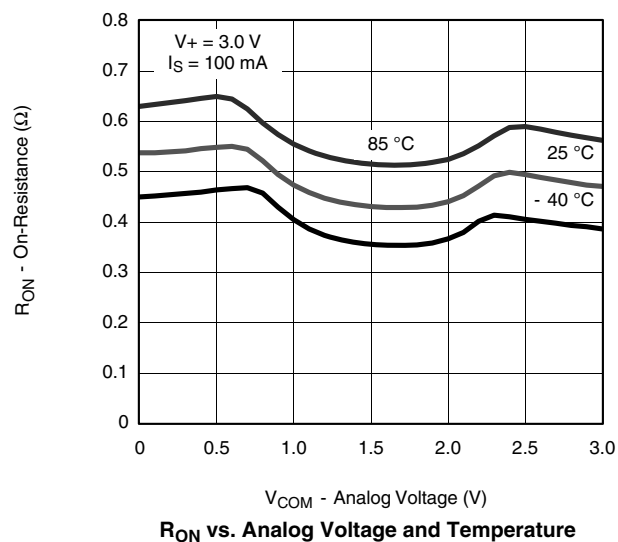
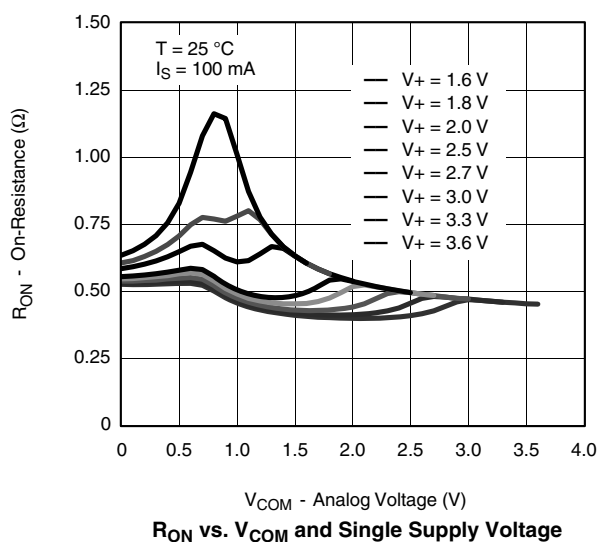
c. Typical values are for design aid only, not guaranteed nor subject to production testing.

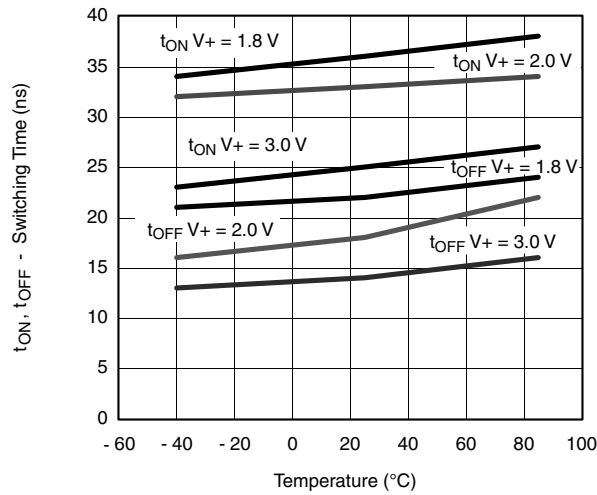
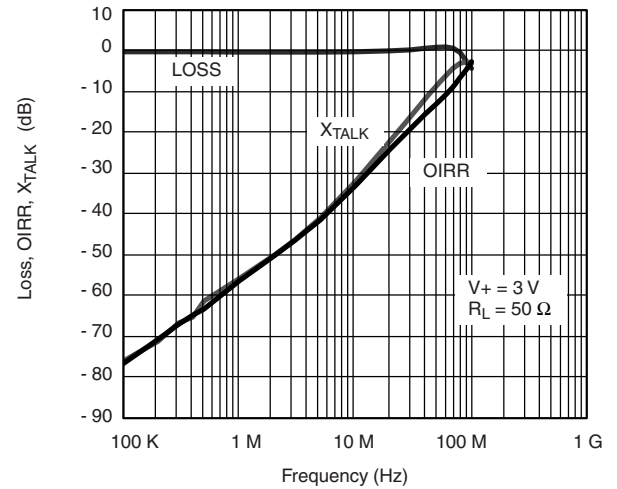
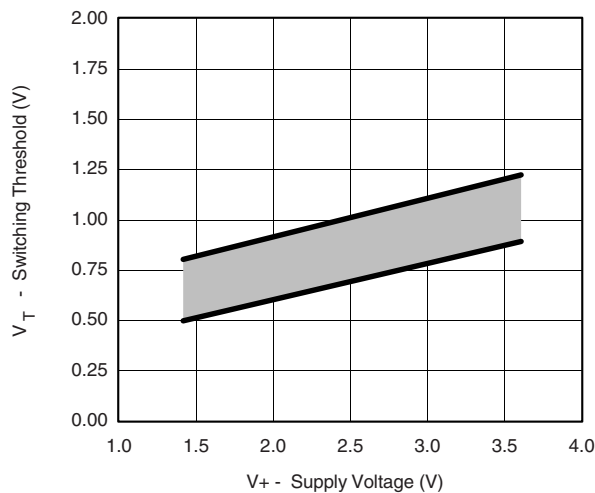
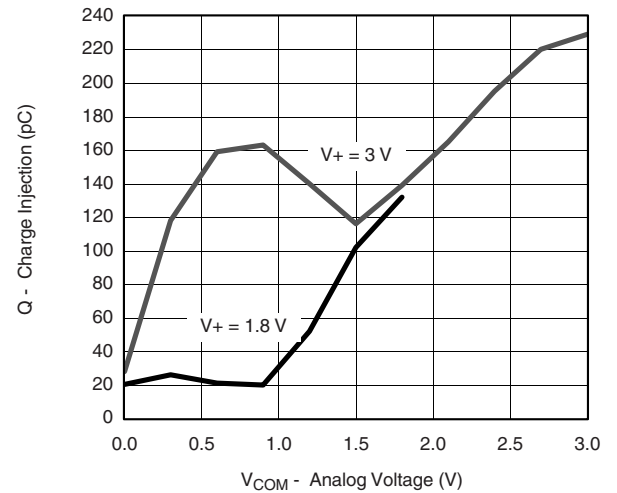
d. Guarantee by design, nor subjected to production test.

e.  $V_{IN}$  = input voltage to perform proper function.

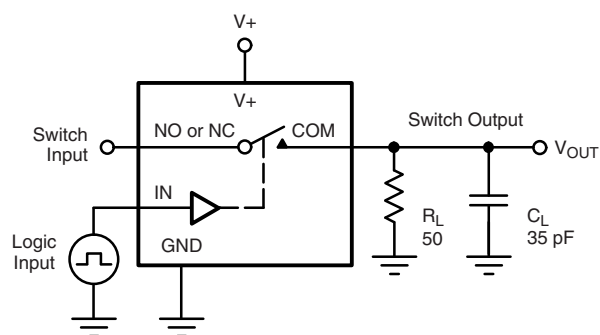
f. Guaranteed by 3 V leakage testing, not production tested.

**TYPICAL CHARACTERISTICS** (25 °C, unless otherwise noted)



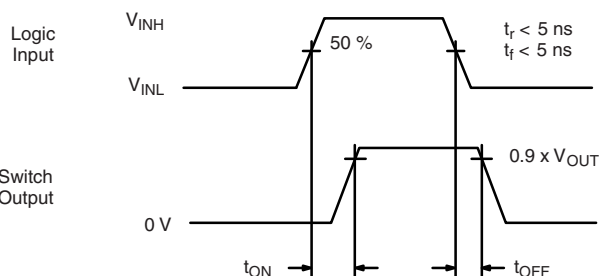
**TYPICAL CHARACTERISTICS** (25 °C, unless otherwise noted)

**Switching Time vs. Temperature**

**Insertion Loss, Off-Isolation, Crosstalk vs. Frequency**

**Switching Threshold vs. Supply Voltage**

**Charge Injection vs. Analog Voltage**

### TEST CIRCUITS



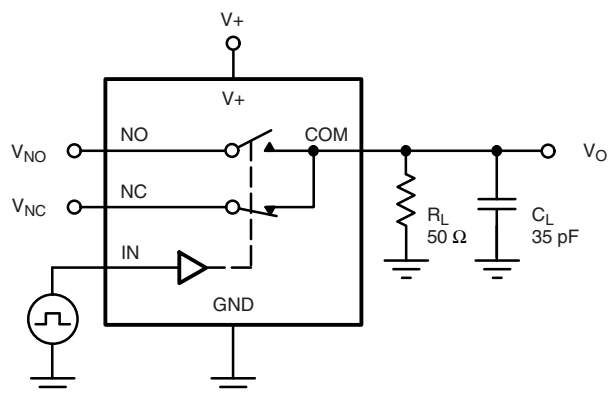
$C_L$  (includes fixture and stray capacitance)

$$V_{OUT} = V_{COM} \left( \frac{R_L}{R_L + R_{ON}} \right)$$



Logic "1" = Switch On  
Logic input waveforms inverted for switches that have the opposite logic sense.

Figure 1. Switching Time



$C_L$  (includes fixture and stray capacitance)

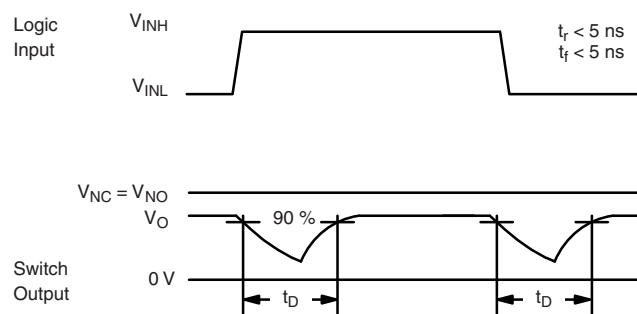
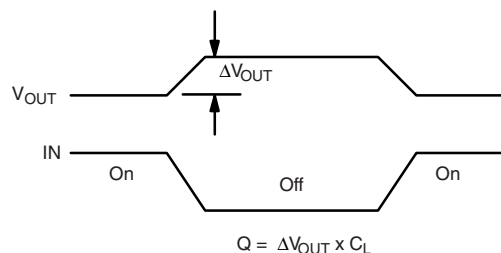
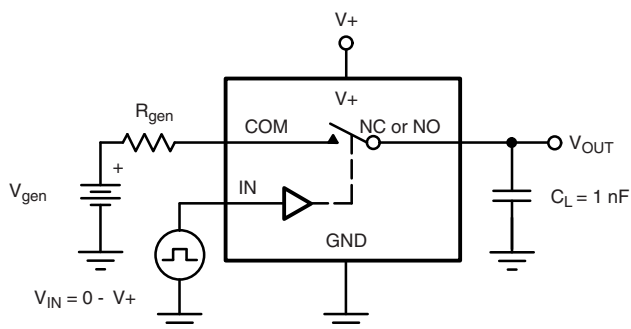
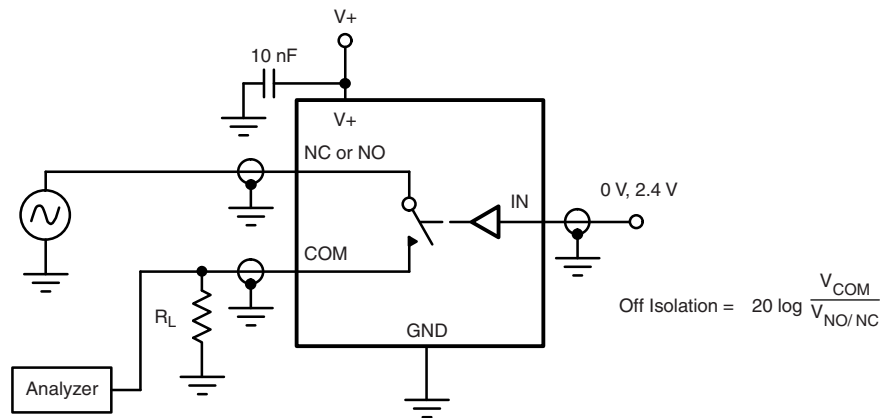
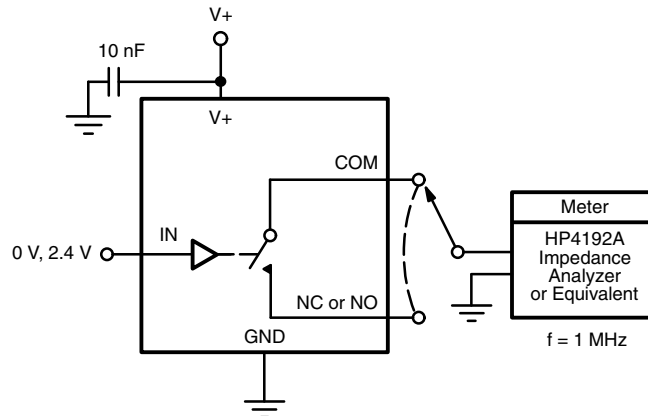


Figure 2. Break-Before-Make Interval



IN depends on switch configuration: input polarity determined by sense of switch.

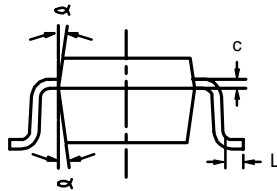
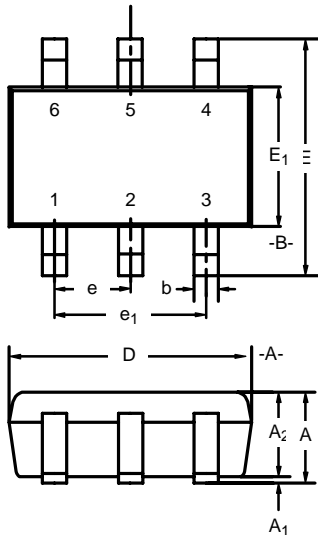
Figure 3. Charge Injection

**TEST CIRCUITS**

**Figure 4. Off-Isolation**

**Figure 5. Channel Off/On Capacitance**

Vishay Siliconix maintains worldwide manufacturing capability. Products may be manufactured at one of several qualified locations. Reliability data for Silicon Technology and Package Reliability represent a composite of all qualified locations. For related documents such as package/tape drawings, part marking, and reliability data, see [www.vishay.com/ppg?73200](http://www.vishay.com/ppg?73200).



**SC-70: 6-LEADS**



Dim	MILLIMETERS			INCHES		
	Min	Nom	Max	Min	Nom	Max
A	0.90	—	1.10	0.035	—	0.043
A <sub>1</sub>	—	—	0.10	—	—	0.004
A <sub>2</sub>	0.80	—	1.00	0.031	—	0.039
b	0.15	—	0.30	0.006	—	0.012
c	0.10	—	0.25	0.004	—	0.010
D	1.80	2.00	2.20	0.071	0.079	0.087
E	1.80	2.10	2.40	0.071	0.083	0.094
E <sub>1</sub>	1.15	1.25	1.35	0.045	0.049	0.053
e	0.65BSC			0.026BSC		
e <sub>1</sub>	1.20	1.30	1.40	0.047	0.051	0.055
L	0.10	0.20	0.30	0.004	0.008	0.012
α	7°Nom			7°Nom		

ECN: S-03946—Rev. B, 09-Jul-01  
DWG: 5550





## Disclaimer

ALL PRODUCT, PRODUCT SPECIFICATIONS AND DATA ARE SUBJECT TO CHANGE WITHOUT NOTICE TO IMPROVE RELIABILITY, FUNCTION OR DESIGN OR OTHERWISE.

Vishay Intertechnology, Inc., its affiliates, agents, and employees, and all persons acting on its or their behalf (collectively, "Vishay"), disclaim any and all liability for any errors, inaccuracies or incompleteness contained in any datasheet or in any other disclosure relating to any product.

Vishay makes no warranty, representation or guarantee regarding the suitability of the products for any particular purpose or the continuing production of any product. To the maximum extent permitted by applicable law, Vishay disclaims (i) any and all liability arising out of the application or use of any product, (ii) any and all liability, including without limitation special, consequential or incidental damages, and (iii) any and all implied warranties, including warranties of fitness for particular purpose, non-infringement and merchantability.

Statements regarding the suitability of products for certain types of applications are based on Vishay's knowledge of typical requirements that are often placed on Vishay products in generic applications. Such statements are not binding statements about the suitability of products for a particular application. It is the customer's responsibility to validate that a particular product with the properties described in the product specification is suitable for use in a particular application. Parameters provided in datasheets and/or specifications may vary in different applications and performance may vary over time. All operating parameters, including typical parameters, must be validated for each customer application by the customer's technical experts. Product specifications do not expand or otherwise modify Vishay's terms and conditions of purchase, including but not limited to the warranty expressed therein.

Except as expressly indicated in writing, Vishay products are not designed for use in medical, life-saving, or life-sustaining applications or for any other application in which the failure of the Vishay product could result in personal injury or death. Customers using or selling Vishay products not expressly indicated for use in such applications do so at their own risk. Please contact authorized Vishay personnel to obtain written terms and conditions regarding products designed for such applications.

No license, express or implied, by estoppel or otherwise, to any intellectual property rights is granted by this document or by any conduct of Vishay. Product names and markings noted herein may be trademarks of their respective owners.

## Material Category Policy

**Vishay Intertechnology, Inc. hereby certifies that all its products that are identified as RoHS-Compliant fulfill the definitions and restrictions defined under Directive 2011/65/EU of The European Parliament and of the Council of June 8, 2011 on the restriction of the use of certain hazardous substances in electrical and electronic equipment (EEE) - recast, unless otherwise specified as non-compliant.**

**Please note that some Vishay documentation may still make reference to RoHS Directive 2002/95/EC. We confirm that all the products identified as being compliant to Directive 2002/95/EC conform to Directive 2011/65/EU.**

**Vishay Intertechnology, Inc. hereby certifies that all its products that are identified as Halogen-Free follow Halogen-Free requirements as per JEDEC JS709A standards. Please note that some Vishay documentation may still make reference to the IEC 61249-2-21 definition. We confirm that all the products identified as being compliant to IEC 61249-2-21 conform to JEDEC JS709A standards.**