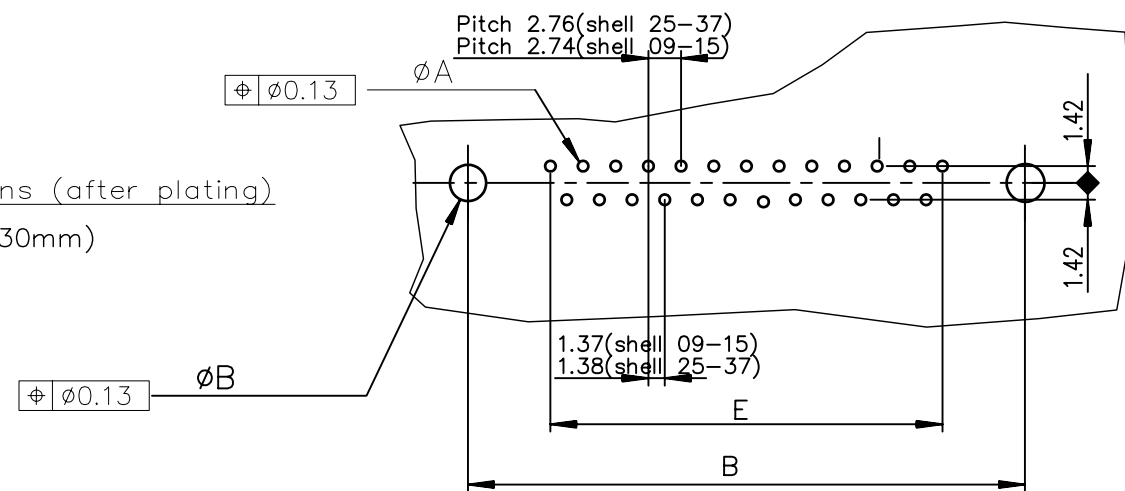


PC board drilling dimensions (after plating)  
(thickness ≤ 3.20±0.30mm)



TIN LEAD PART NUMBER

SHELL	A±0.38	B±0.12	C±0.10	D±0.25	E±0.07	PART NUMBER
09	30.81	24.99	16.96	16.21	10.96	D09S91C*GL00
15	39.14	33.32	25.18	24.54	19.18	D15S91C*GL00
25	53.03	47.04	39.12	38.25	33.12	D25S91C*GL00
37	69.32	63.50	55.68	54.71	49.68	D37S91C*GL00

Plating: 4 --> 200 mating  
Plating: 6 --> 500 Mating  
Plating: 8 --> 1.25µm Equivalent PdNi/AU

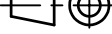


LEAD FREE PART NUMBER

SHELL	A±0.38	B±0.12	C±0.10	D±0.25	E±0.07	PART NUMBER
09	30.81	24.99	16.96	16.21	10.96	D09S91C*GL00LF
15	39.14	33.32	25.18	24.54	19.18	D15S91C*GL00LF
25	53.03	47.04	39.12	38.25	33.12	D25S91C*GL00LF
37	69.32	63.50	55.68	54.71	49.68	D37S91C*GL00LF

Plating: 4 --> 200 mating  
Plating: 6 --> 500 Mating  
Plating: 8 --> 1.25µm Equivalent PdNi/AU

GENERAL CHARACTERISTICS AND ROHS INFORMATIONS:  
SEE DRAWING C01-8646-0001

European Views

www.fciconnect.com			surface ISO 1302		tolerance std ISO 406 ISO 1101		projection 		mm 	
			TOLERANCES UNLESS OTHERWISE SPECIFIED							
Dr	PESSON	1995/10/03	ANGULAR	LINEAR	0.X	±0.1	size A3	Scale 2		
Eng	PESSON	1995/10/03			0.XX	±0.1		ECN	I11—0062	
Chr	LEGARE	1995/10/03			0.XX' ±2	0.XXX				
Appr	LEGARE	1995/10/03	Product family				D—SUB	Spec ref —		
			title FEMALE CONNECTOR DELTA D EUROPE straight press—fit				dwg no C01—8646—0303		Rev. H	
			catalog no —				CUSTOMER		sheet 1 of 1	