



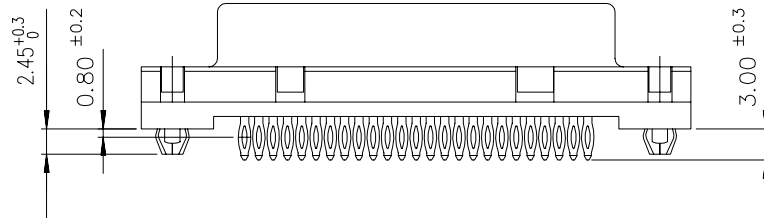
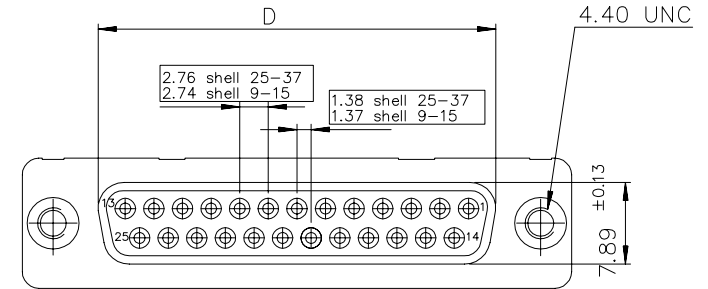
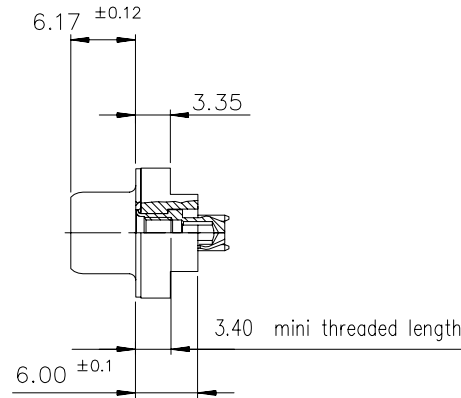
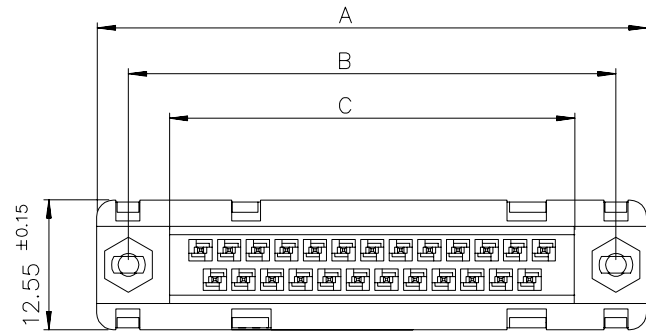
Copyright FCI

A

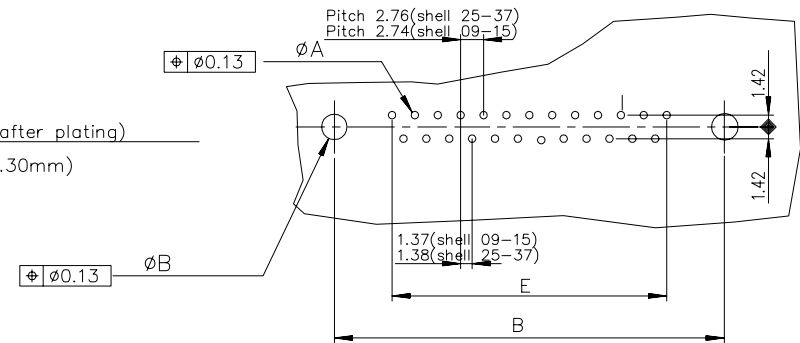
B

C

D



PC board drilling dimensions(after plating)
(thickness ≤ 3.20±0.30mm)



TIN LEAD PART NUMBER

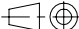


SHELL	A±0.38	B±0.12	C±0.10	D±0.25	E±0.07	PART NUMBER	PART NUMBER
09	30.81	24.99	16.96	16.21	10.96	D09S91C4GX00	D09S91C6GX00
15	39.14	33.32	25.18	24.54	19.18	D15S91C4GX00	D15S91C6GX00
25	53.03	47.04	39.12	38.25	33.12	D25S91C4GX00	D25S91C6GX00
37	69.32	63.50	55.68	54.71	49.68	D37S91C4GX00	D37S91C6GX00
						200 Matings	500 Matings

LEAD FREE PART NUMBER

SHELL	A±0.38	B±0.12	C±0.10	D±0.25	E±0.07	PART NUMBER	PART NUMBER
09	30.81	24.99	16.96	16.21	10.96	D09S91C4GX00LF	D09S91C6GX00LF
15	39.14	33.32	25.18	24.54	19.18	D15S91C4GX00LF	D15S91C6GX00LF
25	53.03	47.04	39.12	38.25	33.12	D25S91C4GX00LF	D25S91C6GX00LF
37	69.32	63.50	55.68	54.71	49.68	D37S91C4GX00LF	D37S91C6GX00LF
						200 Matings	500 Matings

GENERAL CHARACTERISTICS AND ROHS INFORMATIONS:
SEE DRAWING C01-8646-0001

European Views

www.fciconnect.com			surface ISO 1302		tolerance std ISO 406 ISO 1101		projection 		mm 	
TOLERANCES UNLESS OTHERWISE SPECIFIED										
Dr	PESSON	1993/03/18	ANGULAR	LINEAR	0.X	±0.1	size A3	Scale 2		
Eng	PESSON	1993/03/18			0.XX	±0.1				
Chr	RAMESH PK	2011/01/20			0.XXX	±0.1				
Appr	SUDHIR VARMA	2011/01/20	Product family				D-SUB	Spec ref -		
			title FEMALE CONNECTOR DELTA D STRAIGHT PRESS-FIT				dwg no C01-8646-0142		Rev. J	
catalog no			-				CUSTOMER		sheet 1 of 1	

rev	ecn no	dr	date
E	-	MPE	1999/07/15
F	LS05-004	MPE	2005/02/08
G	LS06-0097	LGO	2006/07/29
H	LS06-0140	LGO	2006/09/22
J	I11-0020	RPK	2011/01/27
-	-	-	-
-	-	-	-