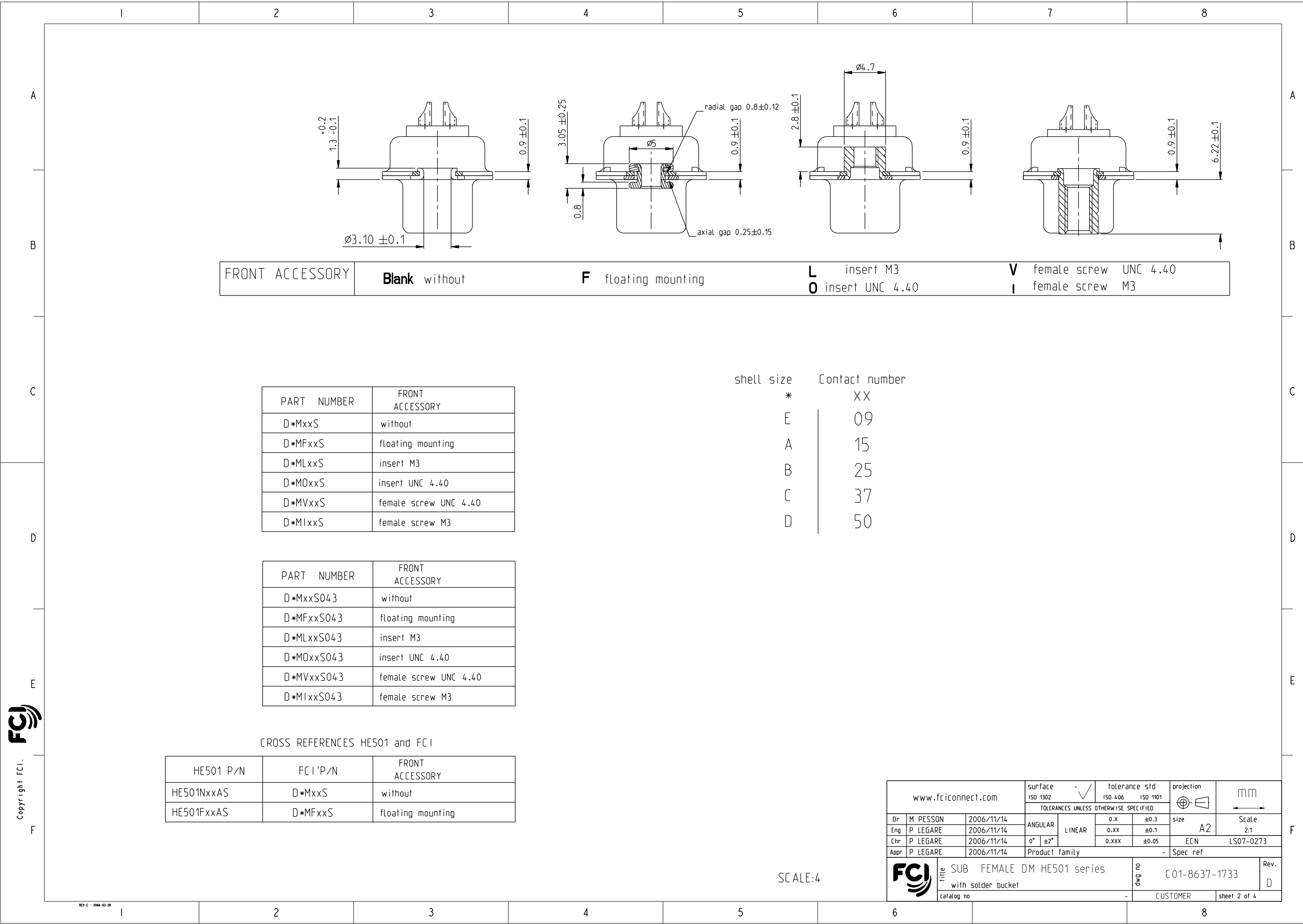
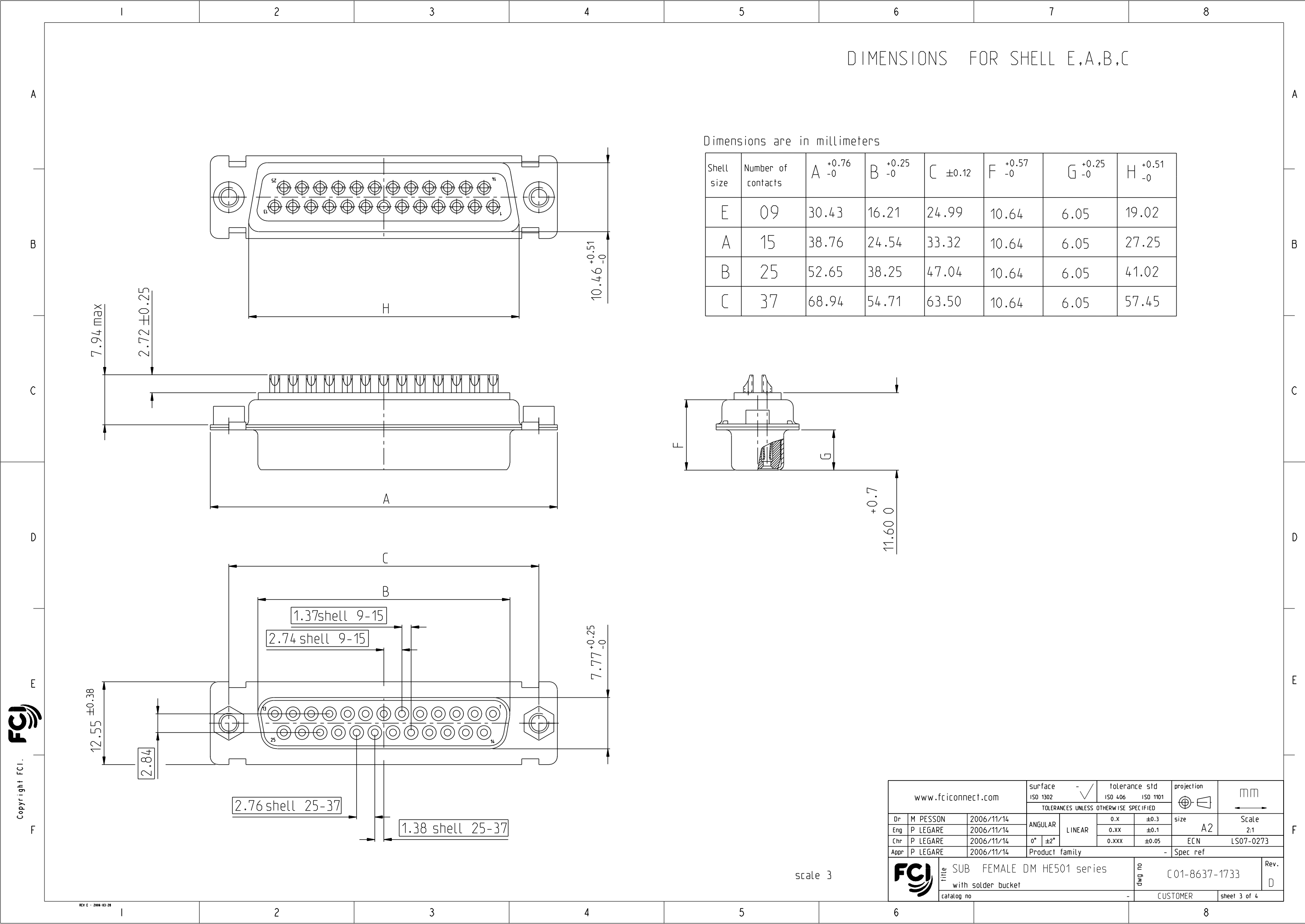


REV E - 2006-03-28



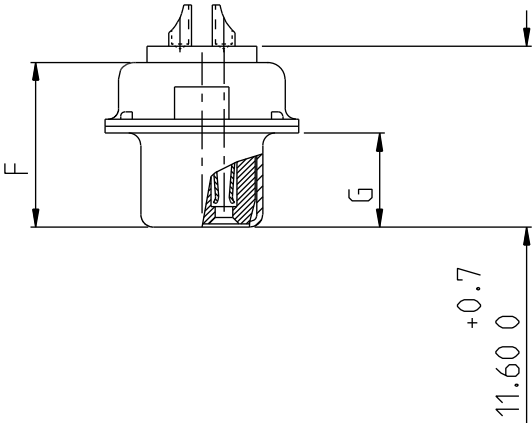
FCI
Copyright FCI.



DIMENSIONS FOR SHELL E,A,B,C

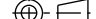


Dimensions are in millimeters

Shell size	Number of contacts	A ^{+0.76 -0}	B ^{+0.25 -0}	C ^{±0.12}	F ^{+0.57 -0}	G ^{+0.25 -0}	H ^{+0.51 -0}
E	09	30.43	16.21	24.99	10.64	6.05	19.02
A	15	38.76	24.54	33.32	10.64	6.05	27.25
B	25	52.65	38.25	47.04	10.64	6.05	41.02
C	37	68.94	54.71	63.50	10.64	6.05	57.45

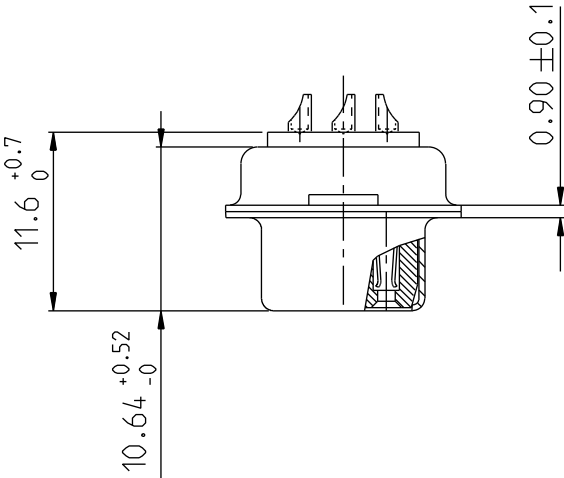
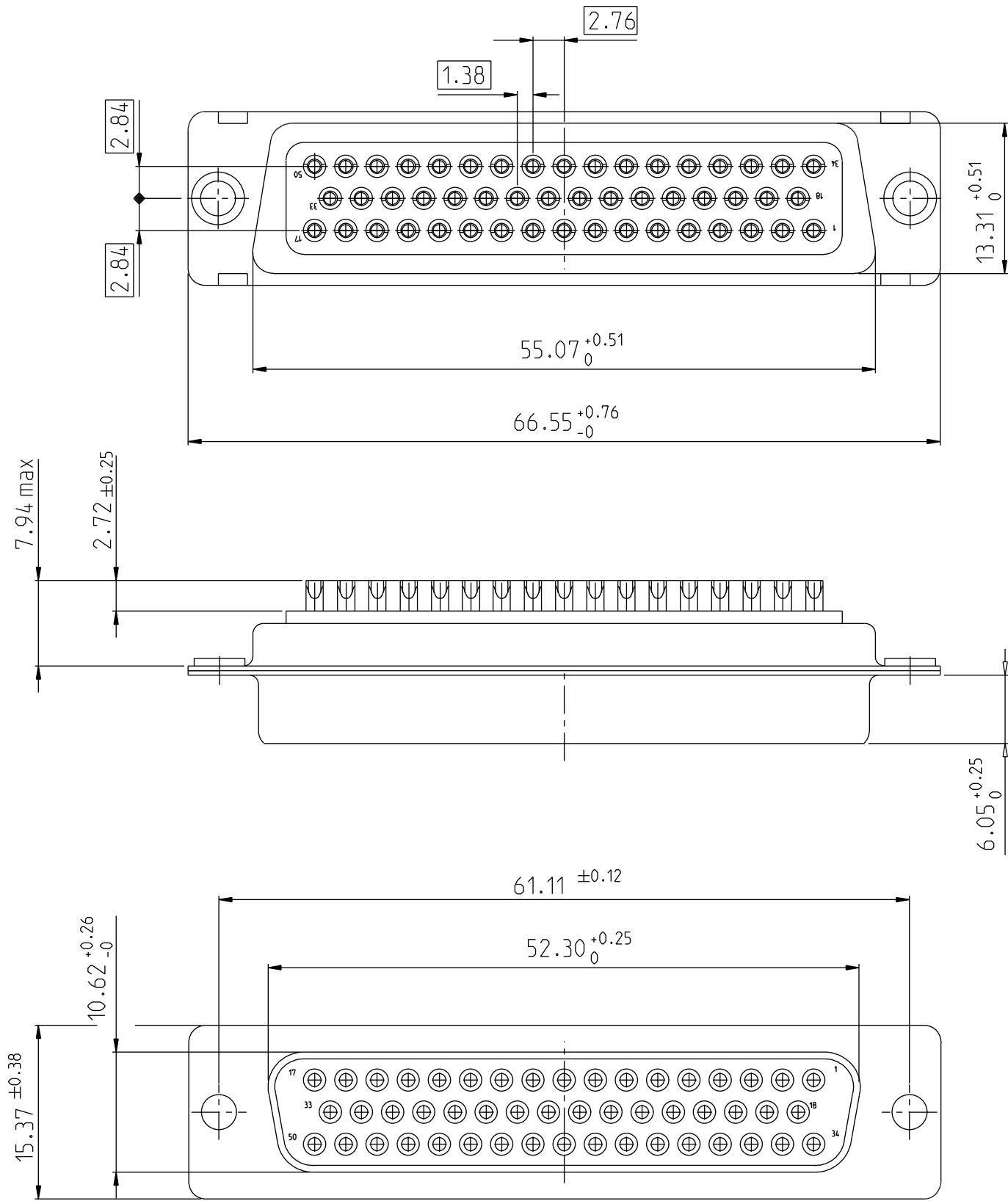


FCI
Copyright FCI.

scale 3

www.fciconnect.com			surface ISO 1302		- ✓ tolerance std ISO 406 ISO 1101		projection 			
TOLERANCES UNLESS OTHERWISE SPECIFIED										
Dr	M PESSON	2006/11/14	ANGULAR	LINEAR	0.X ±0.3		size A2	Scale 2:1		
Eng	P LEGARE	2006/11/14			0.XX ±0.1					
Chr	P LEGARE	2006/11/14			0.XXX ±0.05					
Appr	P LEGARE	2006/11/14	0° ±2°		ECN LS07-0273					
			Product family			-		Spec ref		
			title SUB FEMALE DM HE501 series with solder bucket			dwg no C01-8637-1733			Rev. D	
			catalog no			-			CUSTOMER sheet 3 of 4	

DIMENSIONS FOR SHELL SIZE D (50 CONTACTS)



scale 3

www.fciconnect.com			surface ISO 1302		- ✓ ISO 406 ISO 1101		tolerance std		projection		mm			
			TOLERANCES UNLESS OTHERWISE SPECIFIED											
Dr	M PESSON	2006/11/14	ANGULAR	LINEAR	0.X		±0.3		size A2	Scale 2:1				
Eng	P LEGARE	2006/11/14			0.XX		±0.1							
Chr	P LEGARE	2006/11/14			0° ±2°		0.XXX ±0.05							
Appr	P LEGARE	2006/11/14	Product family						-	Spec ref				
			title SUB FEMALE DM HE501 series						dwg no C01-8637-1733		Rev. D			
			with solder bucket											
			catalog no						-		CUSTOMER		sheet 4 of 4	