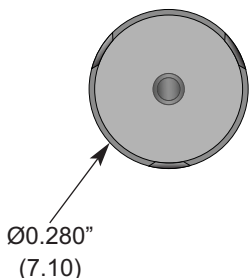
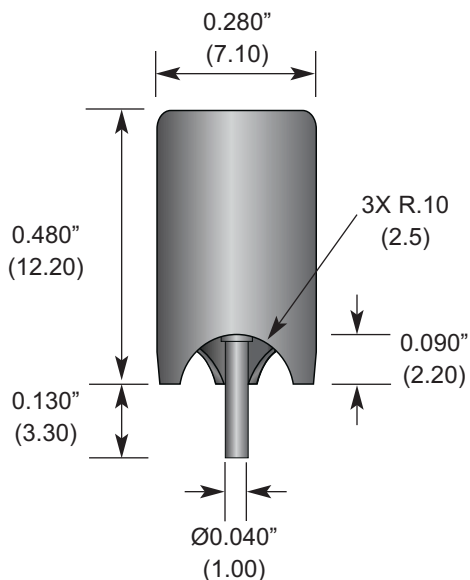
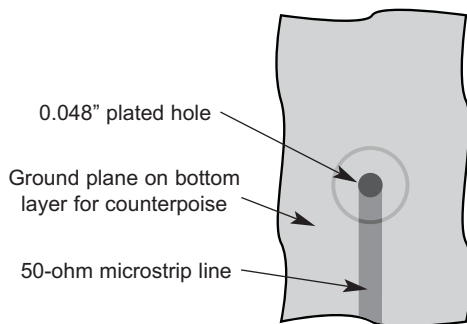


Product Dimensions



Recommended Mounting



Description



The popular JJB series antennas are now available in a high-temperature, reflow-compatible housing – the JJB-HT. Designed for both hand and automated assembly, the antennas are RoHS compliant and can withstand reflow processing temperatures up to 260°C. These compact monopole antennas are an ideal solution for OEM applications requiring a low-cost internal or external antenna solution. JJB-HT series antennas are supplied in tape and reel packaging.

Features

- Reflow compatible
- Low cost
- Ultra-compact package
- Easily concealed internally
- Good for internal or external mounting
- Omnidirectional pattern
- Supplied in tape and reel
- Use with plastic* enclosures

* Requires proximity ground plane

Electrical Specifications

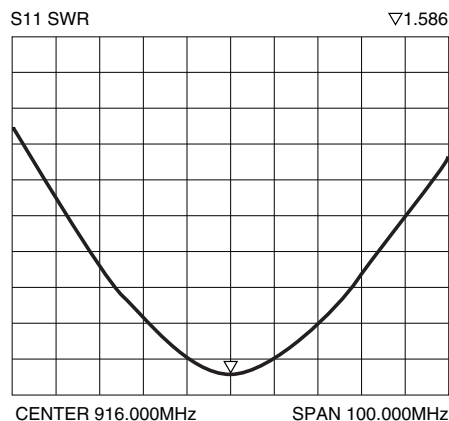
- Center Freq. 916MHz
- Recmd. Oper. Freq. 902-928MHz
- Wavelength 1/4-wave
- VSWR ≤2.0 typ. at center
- Impedance 50 ohms
- Connection Direct solder

Electrical specifications and plots measured on a 3.50" x 3.50" ground plane

Ordering Information

- ANT-916-JJB-HT-T
- *Reels are 250pcs. Quantities less than 250 pcs. are supplied in cut tape

VSWR Graph



Typical VSWR