

# Ultramas

## Modular Instrumentation Enclosure



For Finishing Services, Product Support, or to Order

Call 1-301-696-9800

# Ultramas



As a result of the different dimensions and height options, this ABS plastic enclosure adapts itself superbly to your individual space requirements.

The various accessories mean that you can use Ultramas as a desk or wall enclosure in either a horizontal or vertical position.

Alternatively, the enclosure half-shells and extension sets are also available with molded-in air vents ex warehouse at no extra charge.

The recessed surfaces on the top parts are designed to accommodate displays and operating elements, in particular for the flush fitting of membrane keypads.



**Enclosure material:** ABS,  
for technical data  
see pages 646-650.

**Color:** Light grey, similar  
to RAL 7035;  
screw covers,  
brackets and feet  
agate grey, similar  
to RAL 7038;  
special colours on  
request, minimum  
order 500 pieces.

**Ingress protection:** Closed:  
IP 40/DIN EN 60529;  
with air vents:  
IP 30/DIN EN 60529

**Scope of delivery:**

Lid and base,  
8 screw covers,  
4 rubber feet,  
4 screws M3

**Accessories (additional charge):**

FP: Front panel aluminium  
Al Mg3, anodized, 2 mm

FPK: Front panel, plastic ABS  
light grey, similar to RAL  
7035, 2 mm, structured on  
one side

AB: Extension set left and right,  
ABS light grey, similar to  
RAL 7035  
(set = 2 pieces)

UM-AS: Set-up foot set fixed  
(set = 4 pieces)

UM-ASK: Set-up foot set hinged  
(set = 2 fixed and  
2 hinged feet)

UM-WLH: Wall brackets  
(set = 4 pieces)

UM-VHH: Connecting straps  
(set = 4 pieces)

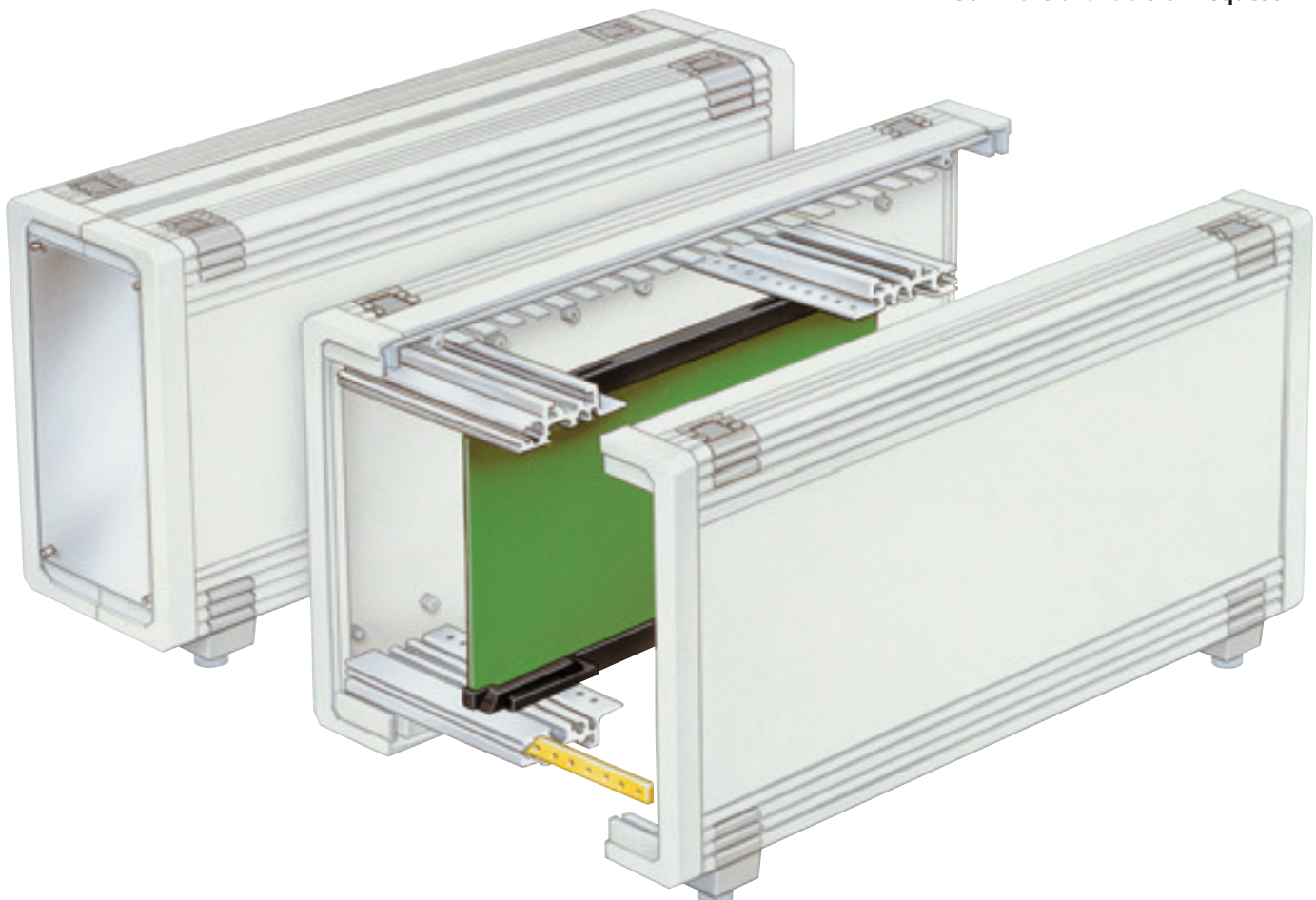
**Note:**

The screw covers which are part of  
standard delivery can be plugged into  
the enclosure **vertically or horizontally**  
as required. Fixed or collapsible set-up  
foot sets can be supplied as accessories  
which provide a space under the appli-  
cances and ensure adequate ventila-  
tion. The enclosure height (or width, if  
used vertically) can be extended by  
45.72 mm or 15.24 mm by using exten-  
sion sets.

Bosses for self-tapping screws are lo-  
cated inside the enclosure shells. The  
boss dimensions conform – among  
others – to European standard size  
cards. Additional grooves for the inser-  
tion of circuit boards, mounting plates,  
etc., are located on the inner enclosure  
sides.

**19" technology:**

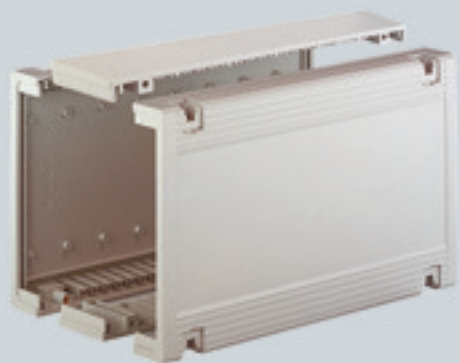
**19" inside extensions for 3 and 6 HE  
with widths of 9,12,18,21,27,30 and  
36 TE are available on request.**



# Ultramas



Ventilation type



## Ultramas UM 3..09

### Enclosures

Model	Order no.	W	H	D
UM 32009	55320000	157.5	62.2	198.9
UM 32009 L	55320010	157.5	62.2	198.9
UM 32609	55326000	157.5	62.2	258.9
UM 32609 L	55326010	157.5	62.2	258.9

L = with molded-in air vents in lid and base

### Scope of delivery:

2 half-shells, 8 covers,  
4 rubber feet, 4 M3 screws

### Additional accessories:

see pages 102-103.

\* The basic enclosure height of 46.5 mm (in horizontal use) can be increased by the use of extension sets AB... listed in the table below. The front panels must be chosen to match the selected enclosure width.

### Selection table of AB ... and FP(K) for UM 3..09 enclosures

Encl. height	Number of extension sets		Front panels to be used
	AB 02_03	AB 02_09(L)	
46.5	–	–	FP(K) 30009
61.7	1	–	FP(K) 30012
92.2	–	1	FP(K) 30018
107.5	1	1	FP(K) 30021
138.0	–	2	FP(K) 30027
153.2	1	2	FP(K) 30030
183.7	–	3	FP(K) 30036

### Extension sets AB ...

#### Order designation

Model	Order no.	Extension h.	D = enclosure depth
AB 02003	56020500	15.24	198.9
AB 02009	56020000	45.72	198.9
AB 02009 L	56020010	45.72	198.9
AB 02603	56026500	15.24	258.9
AB 02609	56026000	45.72	258.9
AB 02609 L	56026010	45.72	258.9

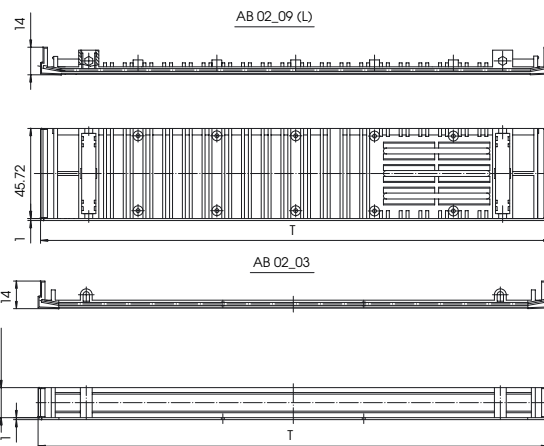
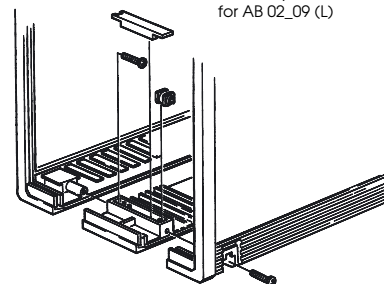
L = with ventilation

### Scope of delivery:

2 extension units, fitting material

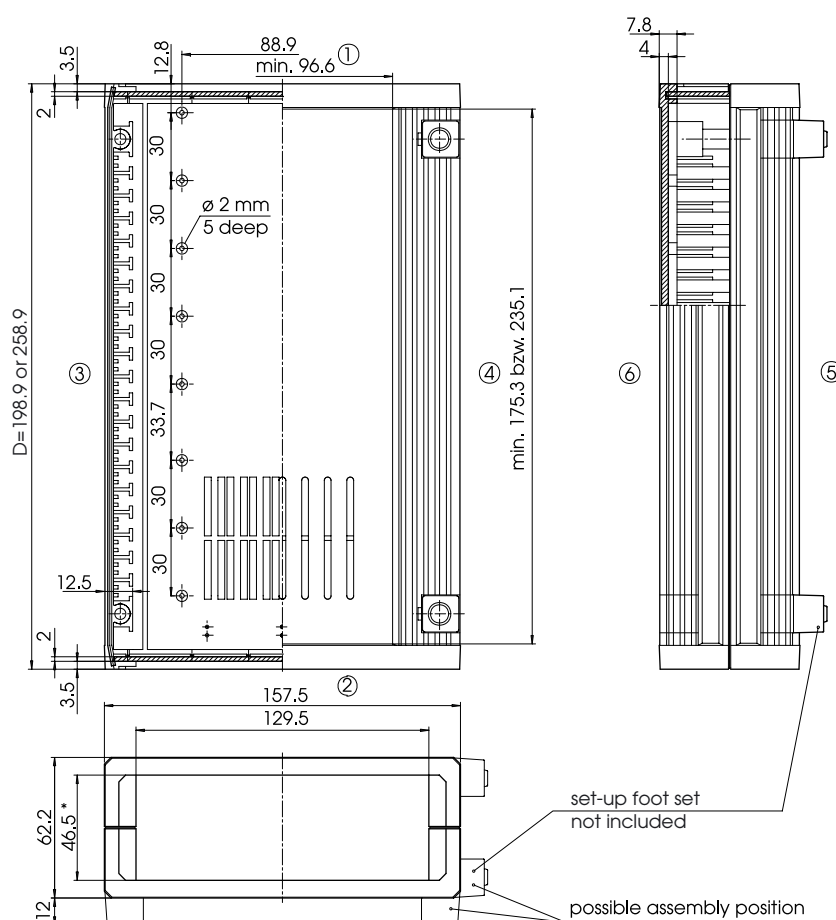
### Selection table: see above.

Assembly illustration  
for AB 02\_09 (L)



These extension units make it possible to extend the Ultramas enclosures between the half-shells by 3 TE or  $n \times 9$  TE respectively. If more than one extension set is used, they must be screwed with each other.

# UM 3..09



Z-2800266

## Front panels, plug-in

### Anodized aluminum, 2.0 mm thick

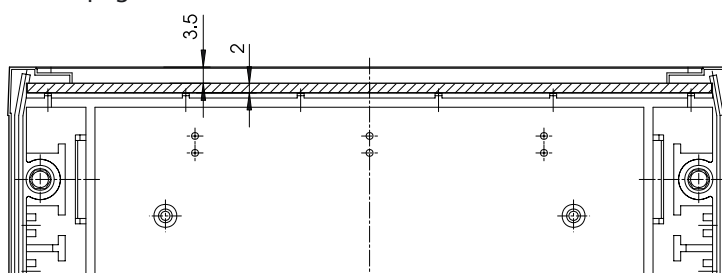
Model	Order no.	H	W
FP 30009	56030900	56.3	149
FP 30012	56031200	71.5	149
FP 30018	56031800	102.0	149
FP 30021	56032100	117.2	149
FP 30027	56032700	147.7	149
FP 30030	56033000	162.9	149
FP 30036	56033600	193.4	149

### Plastic, 2.0 mm thick, ABS RAL 7035, embossed on one side

Model	Order no.	H	W
FPK 30009	56030910	56.3	149
FPK 30012	56031210	71.5	149
FPK 30018	56031810	102.0	149
FPK 30021	56032110	117.2	149
FPK 30027	56032710	147.7	149
FPK 30030	56033010	162.9	149
FPK 30036	56033610	193.4	149

The front panels must be chosen to match the selected extension sets.

Please also refer to **Selection table** on page 96.



Z-2800271

# Ultramas

## Ultramas UM 5...11

### Enclosures

Model	Order no.	W	H	D
UM 52011	55520000	224.2	72.4	198.9
UM 52011 L	55520020	224.2	72.4	198.9

L = with molded-in air vents in lid and base

### Scope of delivery:

2 half-shells, 8 covers,  
4 rubber feet, 4 M3 screws

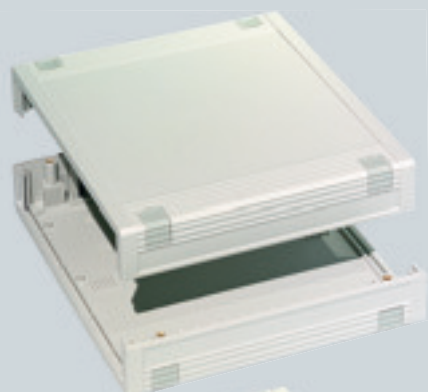
### Additional accessories:

see pages 102-103.

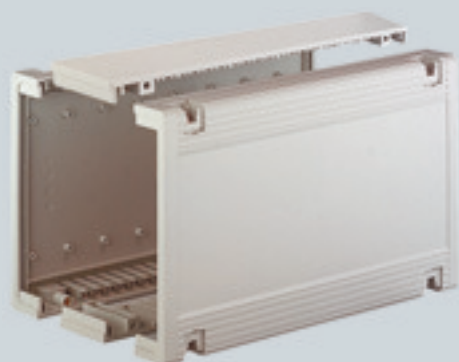
\* The basic enclosure height of 56.7 mm (in horizontal use) can be increased by the use of extension sets AB... listed in the table below. The front panels must be chosen to match the selected enclosure width.

### Selection table of AB ... and FP(K) for UM 52011 enclosures

Encl. height	Number of extension sets	
	AB 02009(L)	Front panels to be used
56.7	–	FP(K) 50011
102.4	1	FP(K) 50020
148.1	2	FP(K) 50029



Ventilation type



### Extension sets AB ...

#### Order designation

Model	Order no.	Ext. height	D = enclosure depth
AB 02009	56020000	45.72	198.9
AB 02009 L	56020010	45.72	198.9

L = with ventilation

### Scope of delivery:

2 extension units, fixing material

### Selection table: see above.

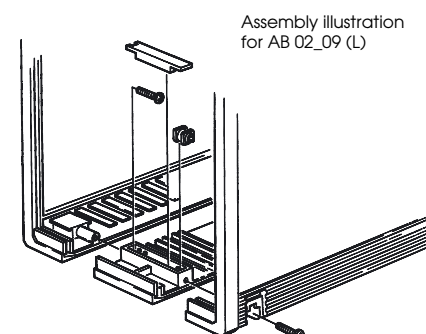
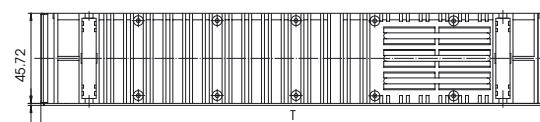
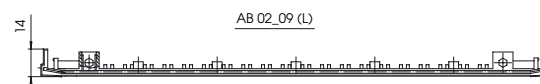
Extension set AB 02003 (page 96)

Only for use with special screws.

Screw type SHR-Z-M3-40

Order no.: 59005541

Please order separately  
(4 pcs. per extension set).



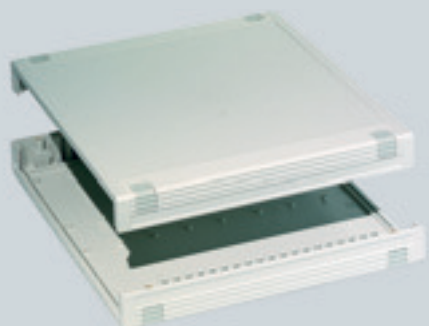
These extension units make it possible to extend the Ultramas enclosures between the half-shells by n x 9 TE respectively. If more than one extension set is used, they must be screwed with each other.

[illegible]

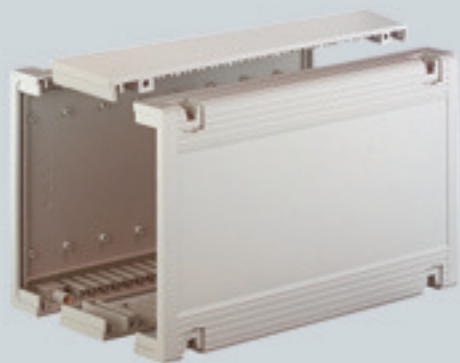
7-2800805

Technical drawing of a roof cross-section. The drawing shows a horizontal section with a dashed centerline. On the left and right sides, there are circular features representing columns or supports. The roof structure consists of a top layer with a diagonal hatching pattern, a middle layer with a horizontal hatching pattern, and a bottom layer with a horizontal hatching pattern. Dimensions are indicated: a vertical dimension of 3.5 is shown on the left, and a horizontal dimension of 2 is shown in the center.

# Ultramas



Ventilation type



These extension units make it possible to extend the Ultramas enclosures between the half-shells by 3 TE or  $n \times 9$  TE respectively. If more than one extension set is used, they must be screwed with each other.

## Ultramas UM 6...09

### Enclosures

Model	Order no.	W	H	D
UM 62009	55620000	290.9	62.2	198.9
UM 62009 L	55620010	290.9	62.2	198.9
UM 62609	55626000	290.9	62.2	258.9
UM 62609 L	55626010	290.9	62.2	258.9

L = with molded-in air vents in lid and base

### Scope of delivery:

2 half-shells, 8 covers,  
4 rubber feet, 4 M3 screws

### Additional accessories:

see pages 102-103.

\* The basic enclosure height of 46.5 mm (in horizontal use) can be increased by the use of extension sets AB... listed in the table below. The front panels must be chosen to match the selected enclosure width.

### Selection table of AB ... and FP(K) for UM 6..09 enclosures

Encl. height	Number of extension sets		Front panels to be used
	AB 02_03	AB 02_09(L)	
46.5	–	–	FP(K) 60009
61.7	1	–	FP(K) 60012
92.2	–	1	FP(K) 60018
107.5	1	1	FP(K) 60021
138.0	–	2	FP(K) 60027
153.2	1	2	FP(K) 60030
183.7	–	3	FP(K) 60036

### Extension sets AB ...

#### Order designation

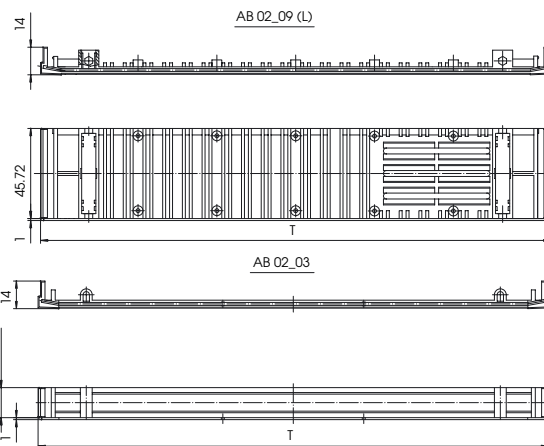
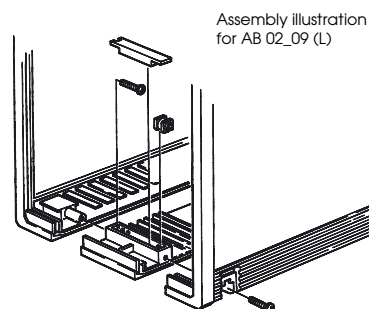
Model	Order no.	Ext. height	TE	Encl. depth
AB 02003	56020500	15.24	3	198.9
AB 02009	56020000	45.72	9	198.9
AB 02009 L	56020010	45.72	9	198.9
AB 02603	56026500	15.24	3	258.9
AB 02609	56026000	45.72	9	258.9
AB 02609 L	56026010	45.72	9	258.9

L = with ventilation

### Scope of delivery:

2 extension units, fixing material

### Selection table: see above.





Technical drawing of the HANSA-CLIMA 10000 BTU/h split system unit, showing front, side, and top views with dimensions.

**Front View (Top):**

- Overall width: 222.3 mm (min. 229.5 mm, max. 44.5 mm)
- Overall height: 198.9 mm or 258.9 mm
- Top panel height: 12.8 mm
- Bottom panel height: 12.5 mm
- Side panel height: 175.3 mm or 235.1 mm
- Drainage holes:  $\varnothing 2$  mm, 5 deep
- Dimensions 30, 33.7, and 30 are indicated for the internal layout.

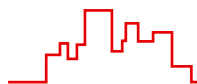
**Side View (Right):**

- Overall width: 7.8 mm
- Top panel height: 4 mm
- Internal components are visible.

**Top View (Bottom):**

- Overall width: 290.9 mm (262.9 mm)
- Overall height: 62.2 mm (46.5 mm)
- Dimensions 12, 12.8, and 3.5 are indicated for the internal layout.
- Labels: "set-up foot set not included" and "possible assembly position" point to the bottom right corner.

Technical drawing of a roof cross-section. The drawing shows a multi-layered roof structure. The top layer is a sloped roof with a hatched insulation layer. Below this is a horizontal structural layer. The roof is supported by a wall on the left and a column on the right. The drawing includes dimensions: 3.5 for the total height of the roof structure and 2 for the height of the insulation layer. A dashed line indicates the centerline of the roof. The drawing is labeled with '3.5' and '2'.



# Ultramas accessories



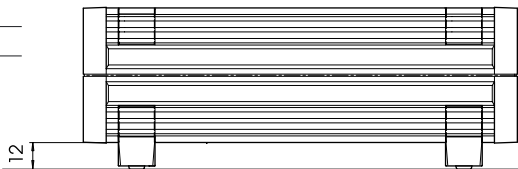
This set consists of four fixed set-up feet which can be used as an alternative to the covers on the lower side of the base. This gives the enclosure increased ground clearance, e.g. for improved ventilation from the lower side. The feet can be fitted for **horizontal** or **vertical enclosure use**, as required.



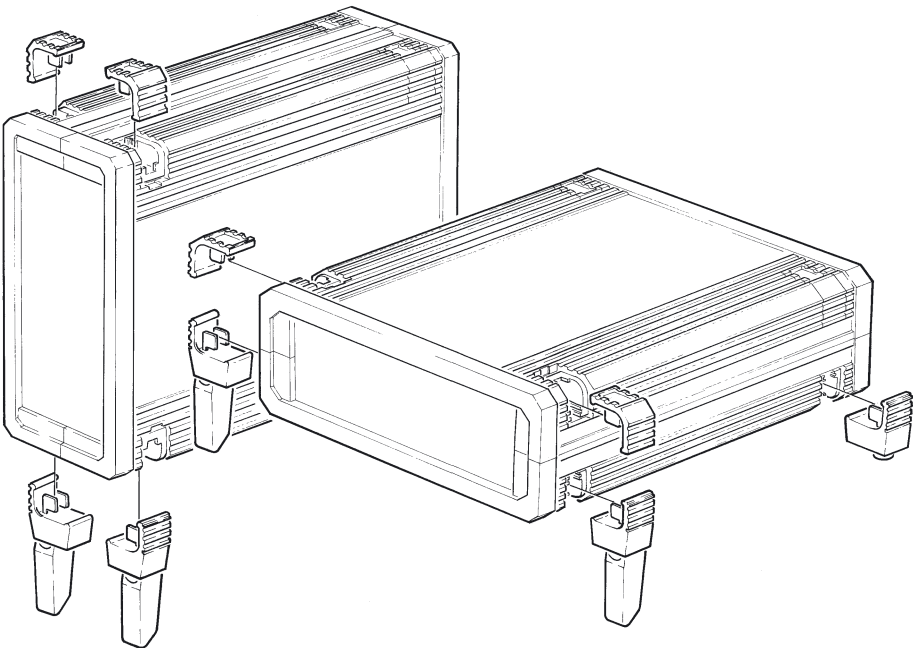
This set consists of two hinged feet and two fixed feet. These can be used as an alternative to the covers on the lower side of the base. This means that the enclosure can be positioned at an angle. The feet can be fitted for **horizontal** or **vertical enclosure use**, as required.

## Set-up foot set (fixed)

Order designation	
Model	Order no.
UM-AS	56012000

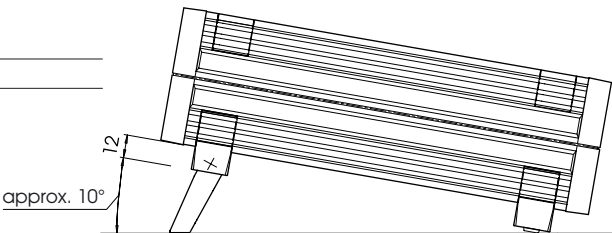


Z-2800286



## Set-up foot set (hinged)

Order designation	
Model	Order no.
UM-ASK	56012100



Z-2800285

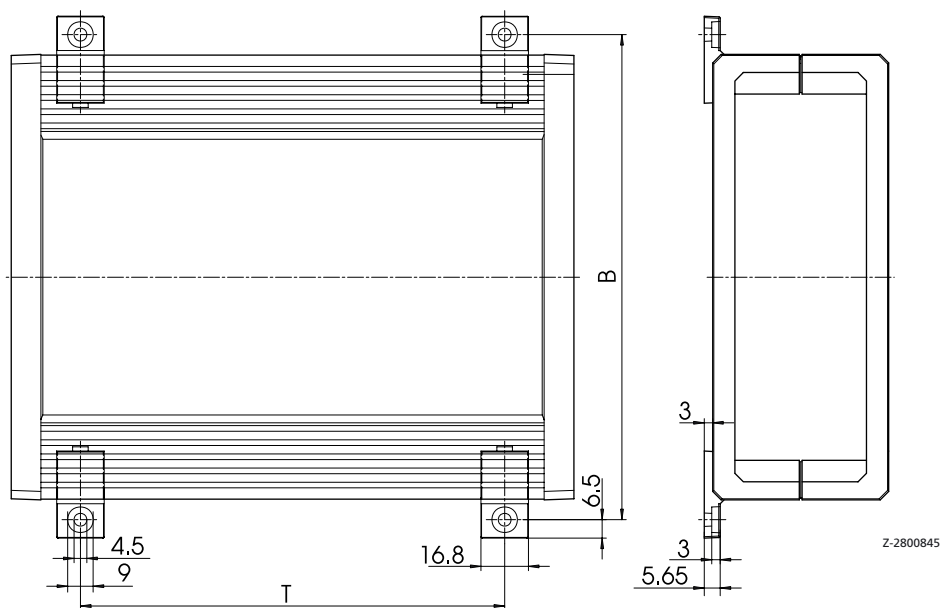
## Wall bracket WLH

### Order designation

Model	Order no.
UM-WLH	56002000

### Table of dimensions

Model	W	D
320..	171.50	150
326..	171.50	210
520..	238.18	150
620..	304.85	150
626..	304.85	210



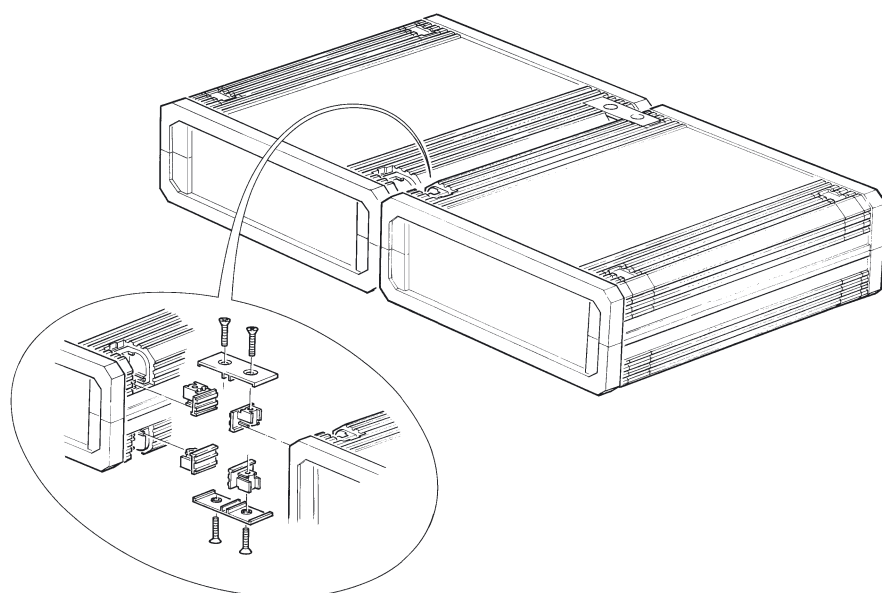
These wall brackets can be used to fit the UM enclosures flat against the wall.

Fitting is by means of side insertion of the intermediate piece and screwing-on of the bracket. This does not affect the enclosure screwing system.

## Connecting strap UM-VHH

### Order designation

Model	Order no.
UM-VHH	56002200



These connecting straps can be used to screw the UM enclosures to each other in a horizontal position.