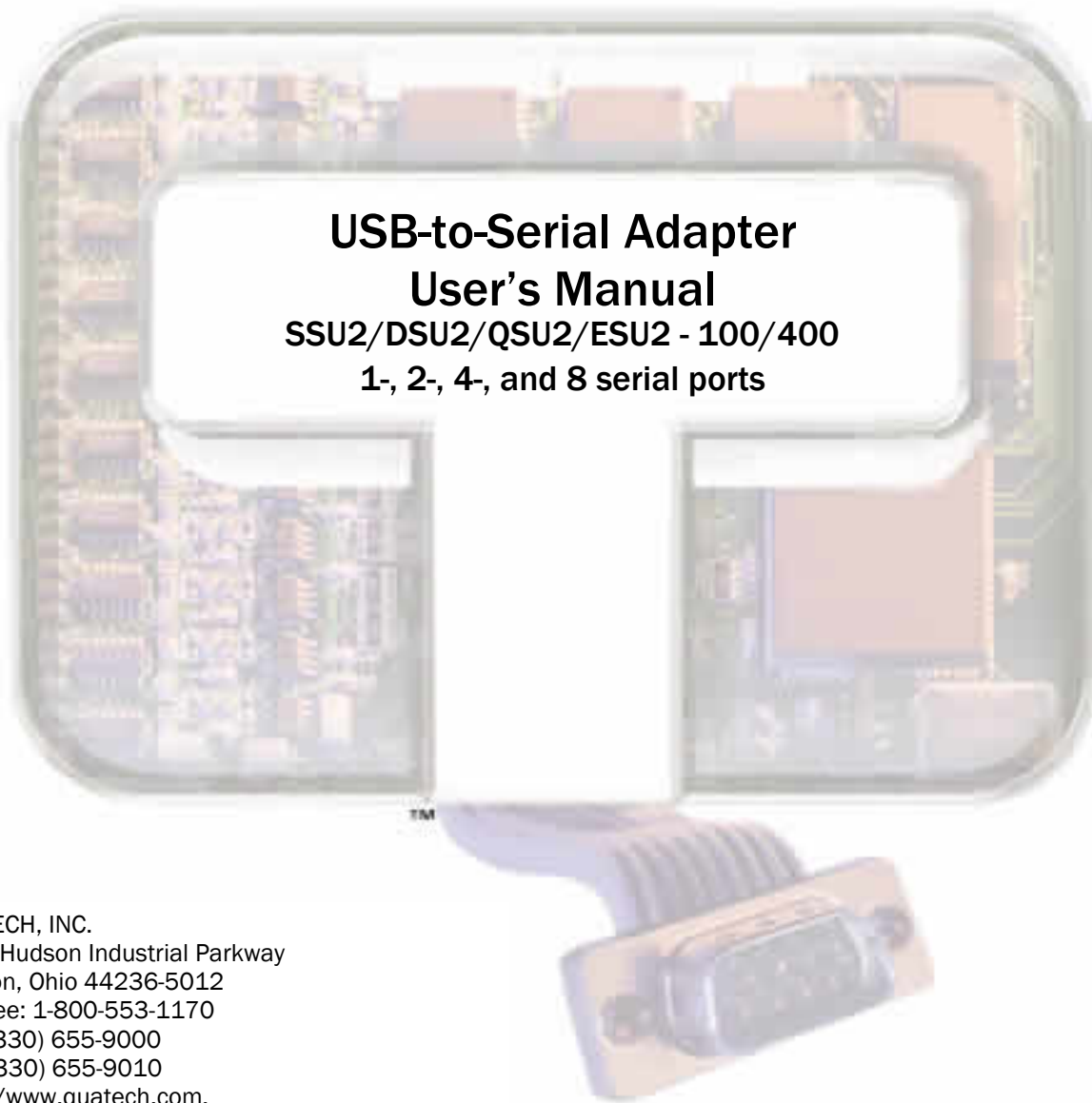


QUATECH

CONNECT WITH
RELIABILITY



**USB-to-Serial Adapter
User's Manual
SSU2/DSU2/QSU2/ESU2 - 100/400
1-, 2-, 4-, and 8 serial ports**

QUATECH, INC.
5675 Hudson Industrial Parkway
Hudson, Ohio 44236-5012
Toll free: 1-800-553-1170
TEL: (330) 655-9000
FAX: (330) 655-9010
<http://www.quatech.com>
SSU2/DSU2/QSU2/ESU2-100/400
User's Manual P/N: 940-0191-101

Copyright	Copyright © 1998 - 2007, Quatech, Inc. All rights are reserved. The information contained in this document cannot be reproduced in any form without the written consent of Quatech, Inc. Any software programs that might accompany this document can be used only in accordance with any license agreement(s) between the purchaser and Quatech, Inc. Quatech Inc. reserves the right to change this documentation or the product to which it refers at any time and without notice.
Trademarks	QUATECH® is a registered trademark of Quatech, Inc. Other product and brand names listed in this manual may be trademarks of their respective owners.
Disclaimer	<p>The information in this manual is believed to be accurate and reliable at the time of posting. Notwithstanding the foregoing, Quatech assumes no responsibility for any damage or loss resulting from the use of this manual, and expressly disclaims any liability or damages for loss of data, loss of use, and property damage of any kind, direct, incidental or consequential, in regard to or arising out of the performance or form of the materials presented herein or in any software program(s) that may accompany this document.</p> <p>Changes or modifications to this device not explicitly approved by Quatech will void the user's authority to operate this device.</p>
Feedback	Quatech, Inc. encourages and appreciates feedback concerning this document. Please send any written comments to the Technical Support department at the address listed on the cover page of this manual.

Table of contents

Table of contents	i
Figures	ii
Tables	ii
Introduction	1
System requirements	1
Features	2
Multiple Electrical Interface (MEI)	2
Understanding the LEDs	2
IND option - surge suppression upgrade	2
Installing the USB-to-Serial Adapter	3
Installing under Windows XP	3
Installing under Windows 2000	7
Uninstalling under Windows 2000 or Windows XP	11
Making external connections	12
RS-232 serial connections	12
RS-422/485 serial connections	13
Testing DB-9 serial ports in HyperTerminal	14
Running Hyperterminal	14
Using Device Manager	15
Accessing Device Manager	15
Exploring Device Manager screens	15
Windows XP and 2000	15
Setting advanced options	21
Operating Mode (MEI adapters only)	21
Receiver active... (MEI adapters only)	22
AuxOut/AuxIn (MEI adapters only)	23
Low-Latency Mode	23
Troubleshooting	24
Appendix A	25
Specifications	25
Appendix B	27
Warranty information	27

Figures

Figure 1 - Windows XP Found new hardware prompt.....	3
Figure 2 - Windows XP Choose your search and installation options prompt	4
Figure 3 - Windows XP Searches drivers prompt.....	5
Figure 4 - Windows XP Wizard installs the software	6
Figure 5 - Windows XP Finished installing prompt.....	6
Figure 6 - Windows 2000 Found new hardware prompt.....	7
Figure 7 - Windows 2000 Search for or display drivers prompt	8
Figure 8 - Windows 2000 Locate driver files prompt	8
Figure 9 - Windows 2000 Finished searching for driver files prompt.....	9
Figure 10 - Windows 2000 Finished installing prompt.....	10
Figure 11 – Device Manager	11
Figure 12 - DB-9 connector pinout	12
Figure 13 - Use of DTEs and DCEs in a communication link	12
Figure 14 - Cabling requirements for RS-232 devices.....	13
Figure 15 - Windows XP/2000 Device Manager properties, General tab.....	16
Figure 16 - Windows XP/2000 RS-232/422/485 Advanced Options dialog window	17
Figure 17 - Windows XP/2000 RS-232 Advanced Options dialog window	17
Figure 18 - Windows XP/2000 USB serial port, Port settings box	18
Figure 19 - Windows XP/2000 USB serial port, Advanced settings box	19
Figure 20 - Windows XP/2000 USB serial port properties, Driver box.....	19
Figure 21 - Windows XP/2000 USB serial port, Driver file details box	20

Tables

Table 1 - Device port and connection options	1
Table 2 - LED codes.....	2
Table 3 - Product series summary	2
Table 4 - RS-232 signals on DB-9 connector	12
Table 5 - RS-422/485 signals on DB-9 connector	13

Introduction

Note: These products comply fully with USB Specification version 2.0. They will also operate over slower USB 1.1 connections at a slightly reduced performance level.

This User's Manual describes how to setup and install your Quatech USB-to-Serial Adapter.

The Quatech SSU2-100, DSU2-100, QSU2-100 and ESU2-100, respectively, provide one, two, four and eight independent RS-232 serial interfaces to the host PC via the Universal Serial Bus (USB) port.

The Quatech DSU2-400, QSU2-400 and ESU2-400, respectively, provide two, four and eight independent asynchronous serial interfaces via the USB port. Each of these interfaces can be used as desired for RS-232, RS-422 or RS-485 communications.

Table 1 - Device port and connection options

Note: The "-400" designation indicates an "MEI" device. MEI is an acronym for "Multiple Electrical Interface." The interface is software-selectable for each serial port.

Device	Ports	Connection	Device	Ports	Connection
SSU2-100	1	RS-232			
DSU2-100	2	RS-232	DSU2-400	2	RS-232/422/485
QSU2-100	4	RS-232	QSU2-400	4	RS-232/422/485
ESU2-100	8	RS-232	ESU2-400	8	RS-232/422/485

Each adapter uses high-speed UARTs and deep FIFOs, allowing each channel to obtain data rates up to 921.6 kbps. The adapters are powered over their USB connection (bus-powered), eliminating the need for an external power supply. The adapters are Plug-and-Play devices and require no hardware configuration.

System requirements

Quatech's USB-to-Serial adapters are supported under the Windows 2000/XP (and later) and Linux operating systems. One USB port is required to connect the adapter to your computer. You can use either a built-in USB port or an add-in USB host adapter. We recommend the use of a USB 2.0 port for best performance. Contact our sales department for details on current software offerings. All device drivers are available for download from the Quatech World Wide Web site at <http://www.quatech.com/>.

Features

Multiple Electrical Interface (MEI)

MEI adapters (model numbers ending with “-400”) are shipped with a factory default of all serial ports set for RS-232 connections. Each port can be individually configured for RS-232, RS-422/485 full-duplex, or RS-422-485 half-duplex operation.

Understanding the LEDs

The LEDs inform you of the configuration of the adapter's serial ports. Each serial port has one associated LED located on the back panel to the right of the port's DB-9 connector. The following table lists the possible states of the LEDs and their meaning.

Table 2 - LED codes

LED color	Meaning
Red	Port is configured for RS-232.
Green	Port is configured for RS-422/485.

IND option - surge suppression upgrade

Quatech offers an IND option, or surge-suppression board upgrade, to provide improved performance and industrial-grade reliability.

The IND option provides essential protection for reliable use in an industrial environment. Each communication line has a surge suppressor capable of sustaining up to 40-A, 20- μ s peak transient surges, a clamping voltage of 30 V (15.1 V for 200/300 units), and a peak energy dissipation of 0.1 Joules.

Table 3 - Product series summary

Part number	IND option	Part number	IND option
SSU2-100	no		
SSU2-100IND	yes		
DSU2-100	no	DSU2-400	no
DSU2-100IND	yes	DSU2-400IND	yes
QSU2-100	no	QSU2-400	no
QSU2-100IND	yes	QSU2-400IND	yes
ESU2-100	no	ESU2-400	no
ESU2-100IND	yes	ESU2-400IND	yes

Installing the USB-to-Serial Adapter

Caution! Be sure to allow the installation process to finish without interruption.

This section explains how to install the USB-to-Serial adapter under different operating systems. Please locate and follow the procedure for your computer's operating system.

The USB-to-Serial adapter includes Windows device drivers that enable the serial ports to appear to Windows as standard COM ports.

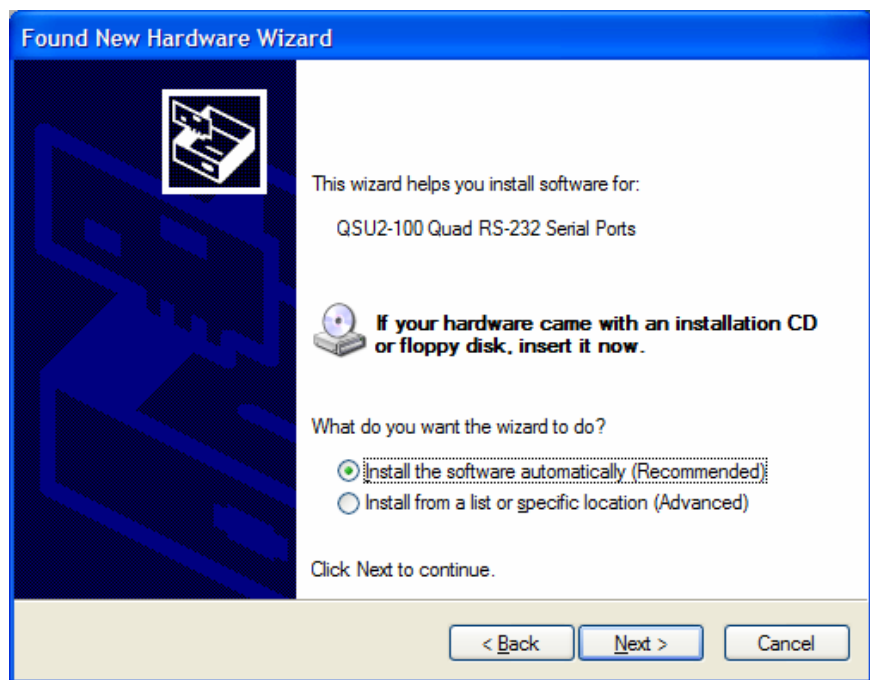
Installing under Windows XP

Follow these steps to install the adapter under Windows XP.

Step	Procedure	Description
❑ Step 1	Turn on the power to your computer system.	<i>This is the system in which the device is to be installed.</i>
❑ Step 2	Plug the wide flat end of the USB cable into the downstream connector.	<i>This is the connector located on the back of the computer or USB hub.</i>
❑ Step 3	Plug the square end of the USB cable into the back of the USB-to-Serial adapter.	<i>Windows tells you that it has found new hardware and launches the Found New Hardware Wizard.</i>

Figure 1 - Windows XP Found new hardware prompt

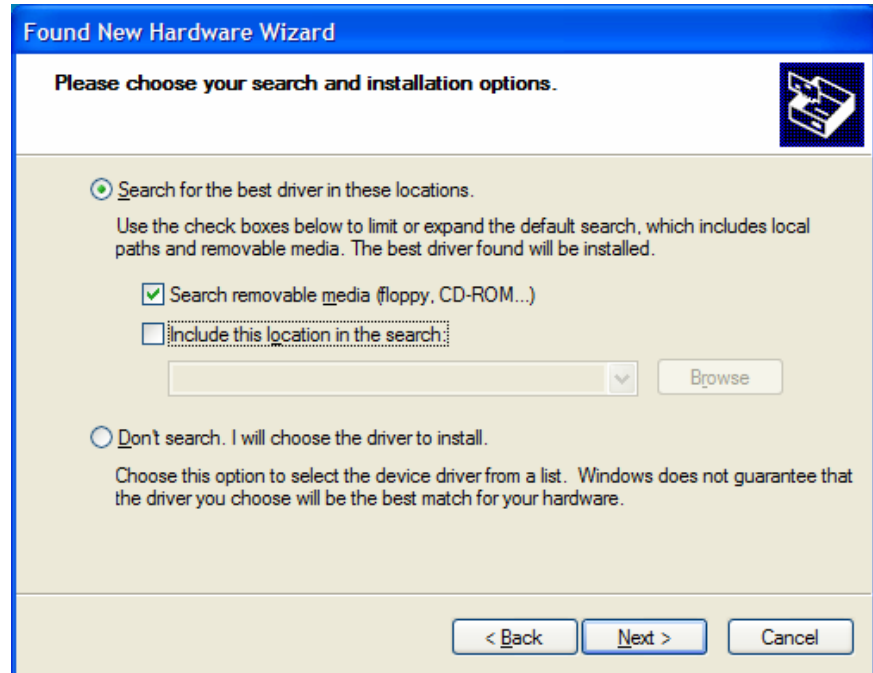
Figure 1 illustrates the Windows XP Found new hardware prompt. The Found New Hardware Wizard launches automatically when you first plug in the USB-to-Serial adapter.



Step	Procedure	Description
❑ Step 4	Insert the Quatech installation CD into your CD-ROM drive.	<i>This is the CD that shipped with the product.</i>
❑ Step 5	Select the "Advanced" option. Click the Next button.	<i>The Choose your search and installation options prompt displays.</i>

Figure 2 - Windows XP Choose your search and installation options prompt

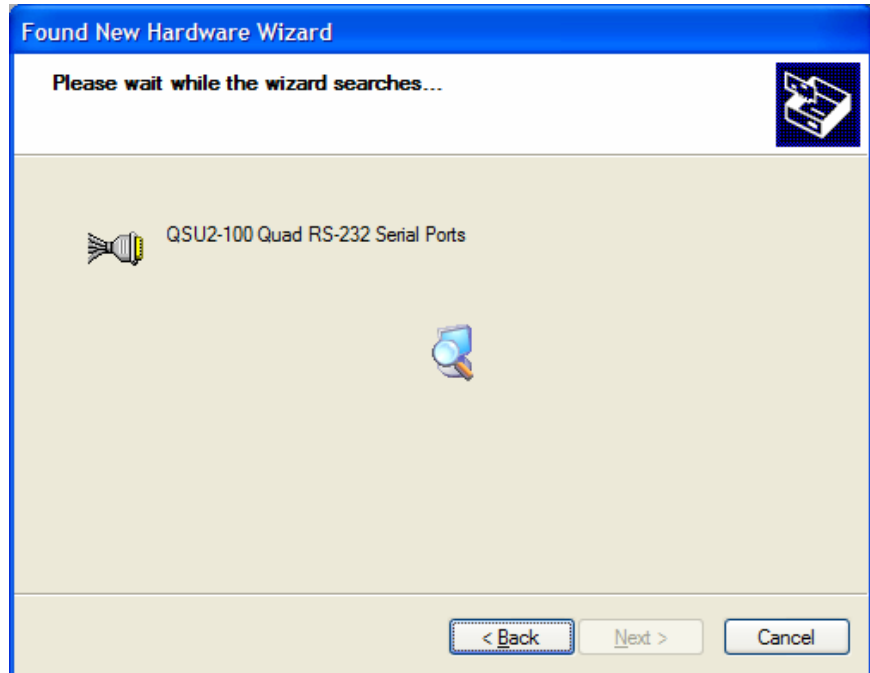
Figure 2 illustrates the Windows XP Choose your search and installation prompt.



Step	Procedure	Description
❑ Step 6	Select Search removable media (floppy, CD-ROM).	<p><i>If necessary, you can also select the Include this location in the search: option and browse to the location with the USB-to-Serial drivers.</i></p> <p><i>The complete path is E:\Serial Port Adapters\Drivers\Windows 98, Me, 2000, XP for USB.</i></p> <p><i>Replace E:\ with your CD-ROM designation</i></p>
❑ Step 7	Click the Next button.	<i>Windows searches for drivers for the adapter.</i>

Figure 3 - Windows XP Searches drivers prompt

Figure 3 illustrates the Windows XP Searches for drivers prompt. When the Wizard finds the USB-to-Serial drivers, this screen disappears.



Step	Procedure	Description
<ul style="list-style-type: none"> □ Step 8 	The Wizard locates and starts to install the necessary software.	<i>The Wizard installs the software prompt displays, followed by the Finished installing prompt.</i>

Figure 4 - Windows XP Wizard installs the software

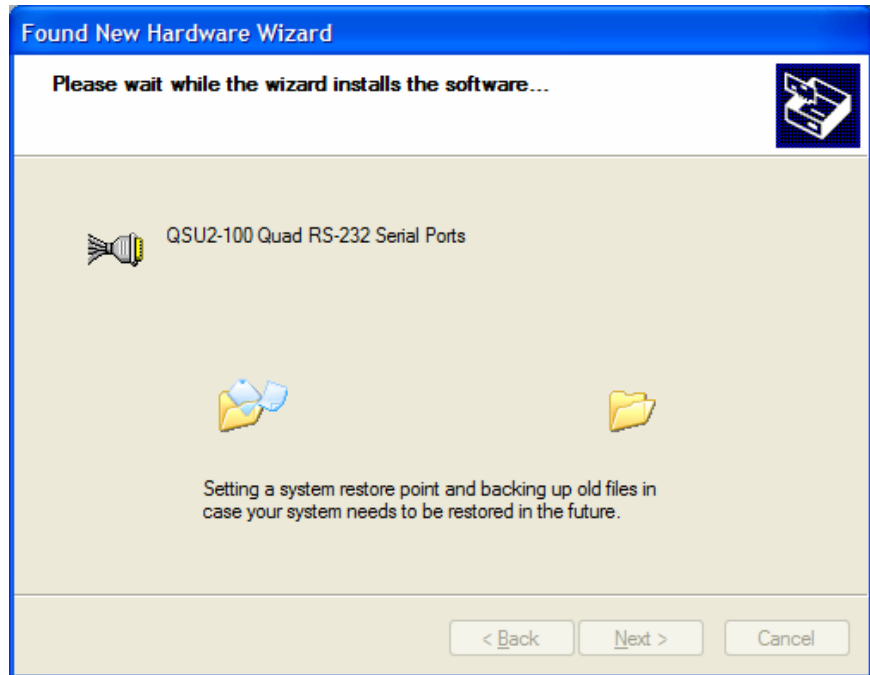
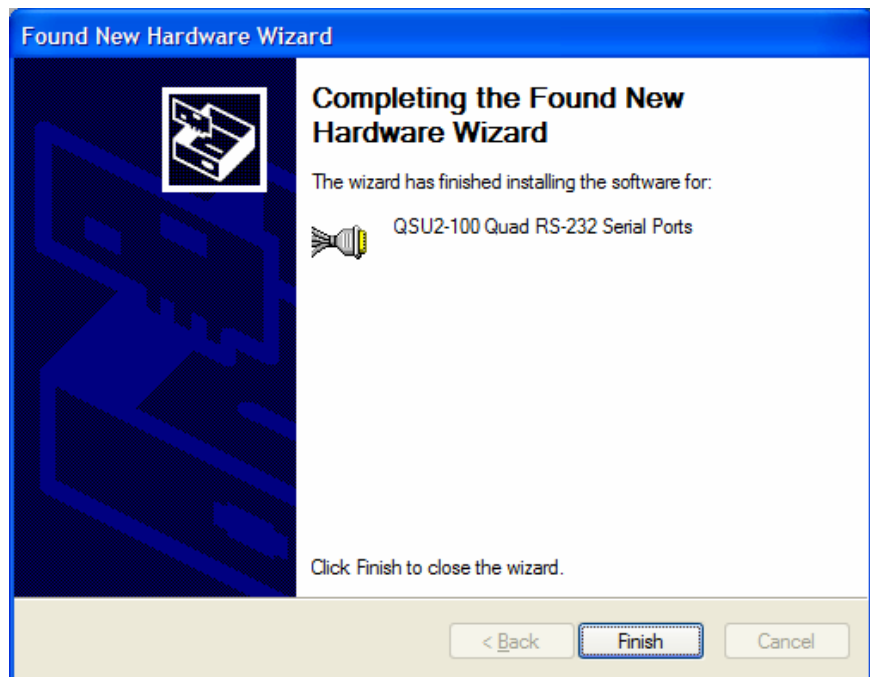


Figure 5 - Windows XP Finished installing prompt

Figure 5 shows the Windows XP Finished installing prompt. It indicates that the adapter has been successfully installed.



Step	Procedure	Description
□ Step 11	Press the Finish button to continue.	<i>The USB adapter installation is complete.</i>

Installing under Windows 2000

Follow these steps to install the USB-to-Serial adapter under Windows 2000.

Step	Procedure	Description
□ Step 1	Turn on the power to your computer system.	<i>This is the system in which the device is to be installed.</i>
□ Step 2	Plug the wide flat end of the USB cable into the downstream connector.	<i>This is the connector located on the back of the computer of USB hub.</i>
□ Step 3	Plug the square end of the USB cable into the back of the USB-to-Serial adapter.	<i>Windows tells you that it has found new hardware and launches the Add New Hardware Wizard. The Found new hardware prompt displays.</i>

Figure 6 - Windows 2000 Found new hardware prompt

Figure 6 illustrates the Windows 2000 Found new hardware prompt. The Found New Hardware Wizard launches automatically when you first plug in the USB-to-Serial adapter.



Step	Procedure	Description
□ Step 4	Click the Next button.	<i>The Search for or display drivers prompt displays.</i>

Figure 7 - Windows 2000 Search for or display drivers prompt

Figure 7 shows the Windows 2000 Search for or display drivers prompt.



Step	Procedure	Description
❑ Step 5	Insert the Quatech installation CD into your CD-ROM drive.	<i>This is the CD that shipped with the adapter.</i>
❑ Step 6	Select Search for a suitable driver for my device (recommended)	
❑ Step 7	Click the Next button.	<i>The Locate driver files prompt displays.</i>

Figure 8 - Windows 2000 Locate driver files prompt

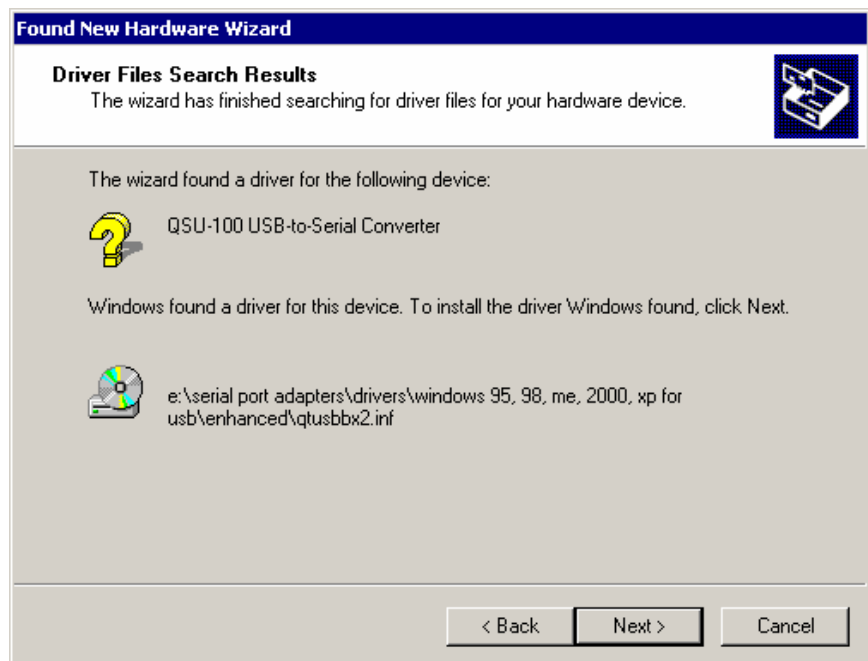
Figure 8 illustrates the Windows 2000 Locate driver files prompt.



Step	Procedure	Description
❑ Step 8	Select CD-ROM drives.	<i>If necessary, you can also select Specify a location: and browse to the desired location with the USB-to-Serial drivers. The complete path is E:\Serial Port Adapters\Drivers\Windows 98, Me, 2000, XP for USB. Replace E:\ with your CD-ROM drive designation.</i>
❑ Step 9	Click the Next button.	<i>Windows searches for drivers for the adapter. The Finished searching for driver files prompt displays.</i>

Figure 9 - Windows 2000 Finished searching for driver files prompt

Figure 9 illustrates the Windows 2000 Finished searching for driver files prompt.



Step	Procedure	Description
❑ Step 10	Click the Next button.	
❑ Step 13	The Wizard proceeds with the installation.	<i>The Please wait while the Wizard installs the software screen displays, followed by the Finished installing prompt.</i>

Figure 10 - Windows 2000 Finished installing prompt

Figure 10 is the Windows 2000 Finished installing prompt. It indicates that the adapter has been successfully installed.



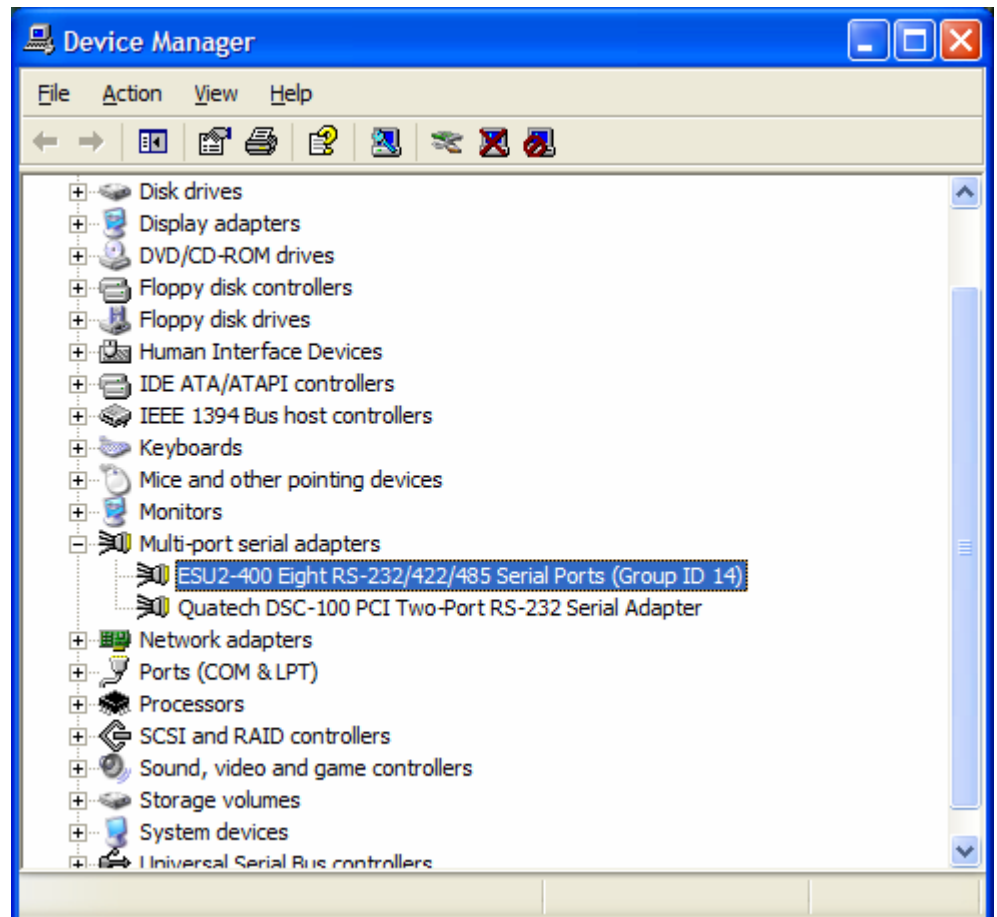
Step	Procedure	Description
□ Step 14	Press the Finish button to continue.	<i>The USB-to-Serial adapter installation is complete.</i>

Uninstalling under Windows 2000 or Windows XP

Follow these steps in the event that you need to uninstall or reinstall the USB-to-Serial software.

1. From the Control Panel, select System.
2. Press the Hardware tab.
3. Click on Device Manager.

Figure 11 – Device Manager

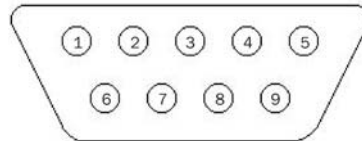


4. Scroll down to Multi-port serial adapters and expand.
5. Highlight your Quatech USB-to-Serial adapter; for example, ESU2-400 Eight RS-232/422/485 Serial Ports (Group ID14).
6. Select the Action menu option.
7. Select Uninstall from the drop down menu.
8. Click OK at the Confirmation screen. Note that this also removes all the serial ports associated with your USB-to-Serial adapter.

Making external connections

Quatech USB-to-Serial adapters are equipped with male DB-9 connectors. The following figures and tables show the serial port pinouts for RS-232 and RS-232/422/485 applications.

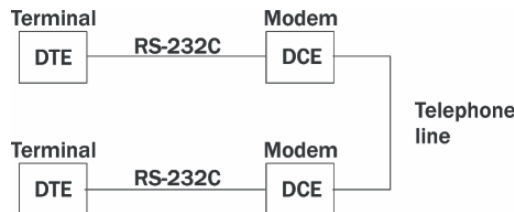
Figure 12 - DB-9 connector pinout



RS-232 serial connections

RS-232 devices are classified by their function as either Data Terminal Equipment (DTE) or Data Communication Equipment (DCE).

Figure 13 - Use of DTEs and DCEs in a communication link



Note: A DTE device is the communication source. A DCE device provides a communication channel between two DTE-type devices.

Quatech USB-to-Serial adapters are DTE devices that connect to peripheral equipment through a male DB-9 connector. The following table lists the serial port connector definitions.

Table 4 - RS-232 signals on DB-9 connector

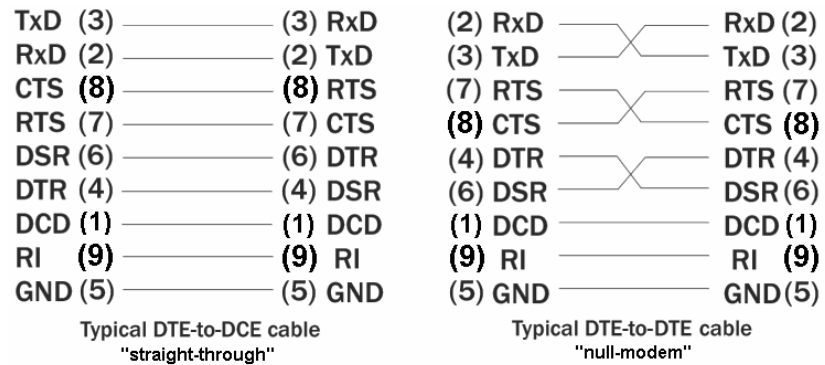
RS-232 signal description	DB-9
Data Carrier Detect (DCD)	1
Receive Data (RxD)	2
Transmit Data (TxD)	3
Data Terminal Ready (DTR)	4
Signal Ground (GND)	5
Data Set Ready (DSR)	6
Request To Send (RTS)	7
Clear To Send (CTS)	8
Ring Indicator (RI)	9

Note: In many applications, DCEs are unnecessary. This allows you to use a null modem cable (modem eliminator cable) to directly connect two DTE-type devices.

DTE- and DCE-type devices have complementary pinouts that allow terminals and modems to connect directly using a one-to-one cable as shown in Figure 14. Two DTE-type devices can be connected by a null modem cable. A typical null modem cable is also shown in the figure.

Figure 14 illustrates the RS-232 pinouts for typical DTE-to-DCE and DTE-to-DTE cables with 9-pin connectors.

Figure 14 - Cabling requirements for RS-232 devices



RS-422/485 serial connections

Note: Refer to Advanced Options using Device Manager for details on software-selectable advanced options.

Quatech USB-to-Serial adapters provide four differential communication signals (either RS-422 or RS-485) per channel. Transmit Data (TxD) and Auxiliary Output (AuxOut) are the two output signals. Receive Data (RxD) and Auxiliary Input (AuxIn) are the two input signals. The adapters also provide a ground signal.

The AuxOut pair can carry the UART's RTS signal. The AuxIn pair can carry the UART's CTS signal. Alternatively, the AuxOut pair can be configured to internally loopback to the AuxIn pair, with the UART's RTS signal also looped back to its CTS signal. The following table shows the RS-422/485 connector definitions.

Table 5 - RS-422/485 signals on DB-9 connector

Note: Pins labeled DNC (Do Not Connect) are indeterminate in two-wire mode and should be left unconnected.

RS-422/485 signal description four-wire mode	DB-9	RS-422/485 signal description two-wire mode
Auxiliary Input (AuxIn-)	1	DNC
Receive Data (RxD+)	2	DNC
Transmit Data (TxD+)	3	Transmit/Receive Data (Data+)
Auxiliary Output (AuxOut-)	4	DNC
Signal Ground (GND)	5	Signal Ground (GND)
Receive Data (RxD-)	6	DNC
Auxiliary Output (AuxOut+)	7	DNC
Auxiliary Input (AuxIn+)	8	DNC
Transmit Data (TxD-)	9	Transmit/Receive Data (Data-)

Testing DB-9 serial ports in HyperTerminal

This section explains how to test the functionality of your USB-to-Serial adapter using Hyperterminal for RS-232 ports and RS-422/485 ports.

An RS-232 loopback connector is included with the USB-to-Serial adapter. For MEI models, an RS-422/485 loopback is also included.

Running Hyperterminal

Step	Procedure	Description
□ Step 1	Attach the loopback connector to the DB-9 connector.	<i>Be sure to use the correct loopback connector for RS-232 or RS-422/485.</i>
□ Step 2	Launch HyperTerminal.	<i>In Windows, select Programs/ Accessories/ Communications/ HyperTerminal.</i>
□ Step 3	Create a new session.	<i>When prompted, give the session any name you wish.</i>
□ Step 4	Select the COM # associated with port 1 from the drop down list.	<i>You are now set up to test the first serial port.</i> <i>Note: Leave all settings at default.</i>
□ Step 5	With the session open, type any text.	<i>If the text you type is echoed on the screen, the port is functioning properly.</i>
□ Step 6	Close the session.	
□ Step 7	Repeat steps 3 through 6 for each serial port.	<i>If the text you type is echoed on the screen, the port is functioning properly.</i>

Using Device Manager

This section explains how to use Device Manager to view the properties of the serial ports enumerated by the USB-to-Serial adapter.

Accessing Device Manager

Step	Procedure	Description
❑ Step 1	Select Start – Control Panel.	
❑ Step 2	Double click the System icon.	<i>The System Properties dialog box opens.</i>
❑ Step 3	Click the Hardware tab, and then press the Device Manager button.	<i>Device Manager lists all the hardware devices that are registered inside the Windows registry.</i>

Exploring Device Manager screens

Windows XP and 2000

Device Manager provides two property dialogs that apply to the USB-to-Serial adapter.

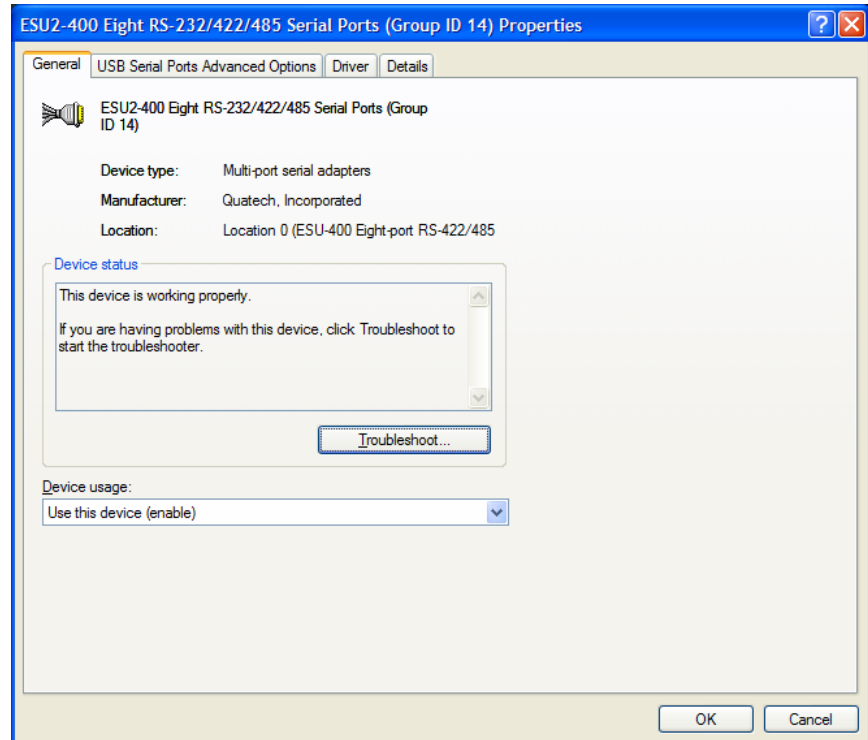
- Ports (COM & LPT) device group property box
- Multi-port serial adapters device group property box

Use the Ports (COM & LPT) device group property box to view and set the port settings and to view device usage and driver information for the serial ports. Use the Multi-port serial adapters device group property box to view and set the advanced options and to view device usage and driver information for the USB-to-Serial adapter.

Step	Procedure	Description
❑ Step 1	With Device Manager open, expand the Multi-port serial adapters device group.	<i>Your USB-to-Serial adapter should appear in the list – for example, ESU2-400 Eight RS-232/422/485 Serial Ports (Group ID14).</i>
❑ Step 2	Double click the USB-to-Serial adapter.	<i>The Properties dialog box opens and displays the General tab.</i>

Figure 15 - Windows XP/2000 Device Manager properties, General tab

Figure 15 illustrates the Windows XP/2000 General Tab, which tells you whether the USB-to-Serial adapter is working properly.



Step	Procedure	Description
□ Step 3	Click the USB Serial Ports Advanced Options tab to view the port setting properties.	<i>The Advanced Options dialog box displays.</i>

Figure 16 - Windows XP/2000 RS-232/422/485 Advanced Options dialog window

Figure 16 illustrates the Advanced Options dialog for MEI devices.

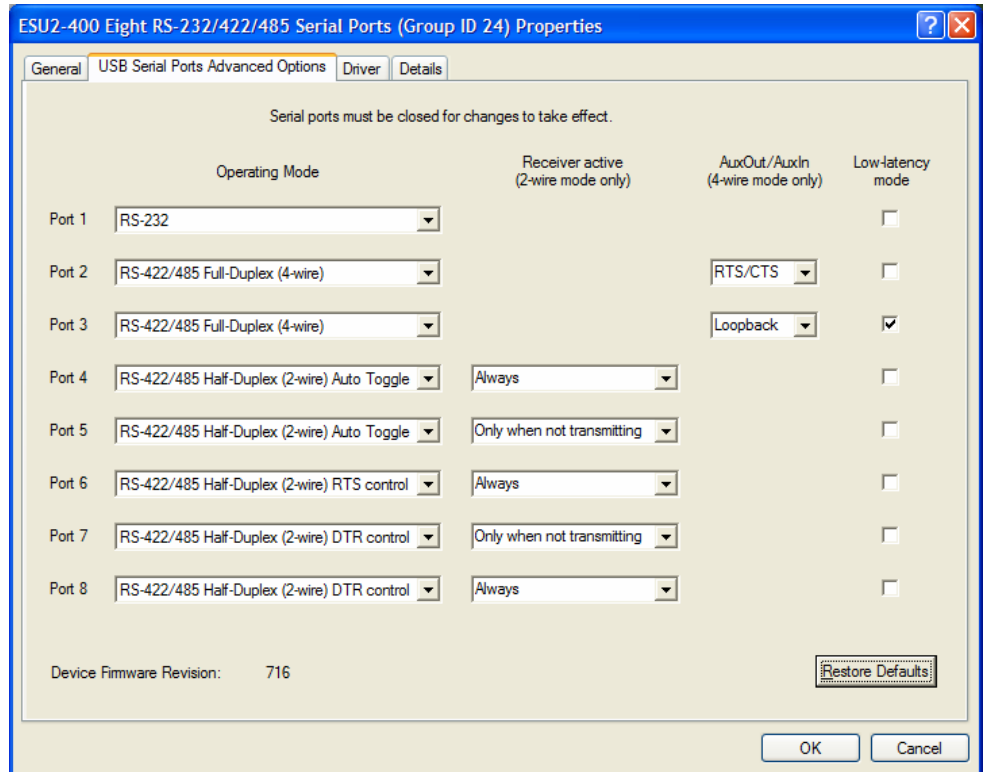
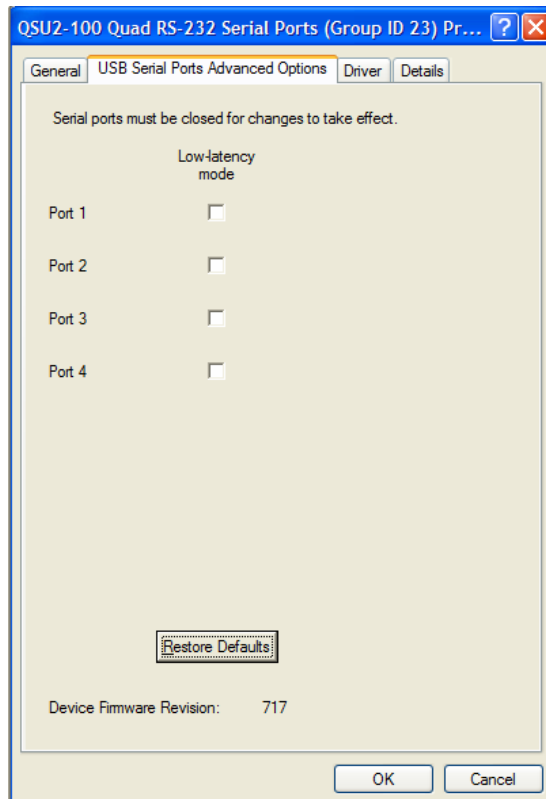


Figure 17 - Windows XP/2000 RS-232 Advanced Options dialog window

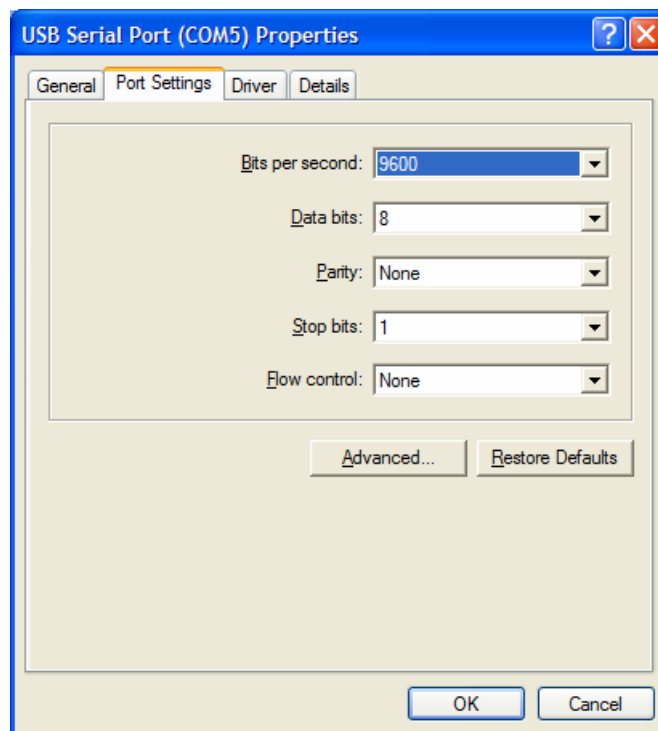
Figure 17 illustrates the Advanced Options dialog for RS-232-only devices.



Step	Procedure	Description
□ Step 4	The RS-232 USB Serial Port Advanced Options dialog box displays the firmware revision of the USB-to-Serial adapter and lets you enable or disable the low-latency mode for each serial port. The RS-422/485 Advanced Dialog box also lets you set the connector signals selection and the duplex mode, and receiver control.	<i>See the Setting advanced options section on page 44 section for details.</i>
□ Step 5	Click Cancel to close the property box.	
□ Step 6	With Device Manager open, expand the Ports (COM & LPT) device group.	<i>The ports associated with the USB-to-Serial adapter should appear in the list of ports.</i>
□ Step 7	Double click the desired port.	<i>The USB Serial Port Properties dialog box opens and displays the General tab.</i>
□ Step 8	Click the Port settings tab.	<i>The Port Settings dialog box displays.</i>

Figure 18 - Windows XP/2000 USB serial port, Port settings box

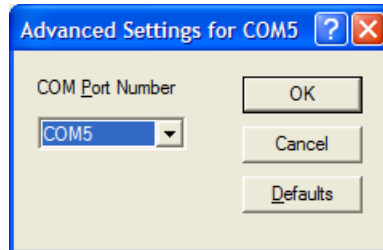
Figure 18 illustrates the USB Ports Settings box.



Step	Procedure	Description
□ Step 9	This Port Settings tab allows you to set default values for the following: <ul style="list-style-type: none"> ➤ Bits per second ➤ Data bits ➤ Parity ➤ Stop bits 	<p><i>Most applications do not make use of these default settings, but prefer to make their own settings.</i></p> <p><i>See the Setting advanced options section on page 44 section for details.</i></p>

Step	Procedure	Description
	➤ Flow control	
❑ Step 10	Press the Advanced button.	<i>The Advanced Options dialog box opens.</i>

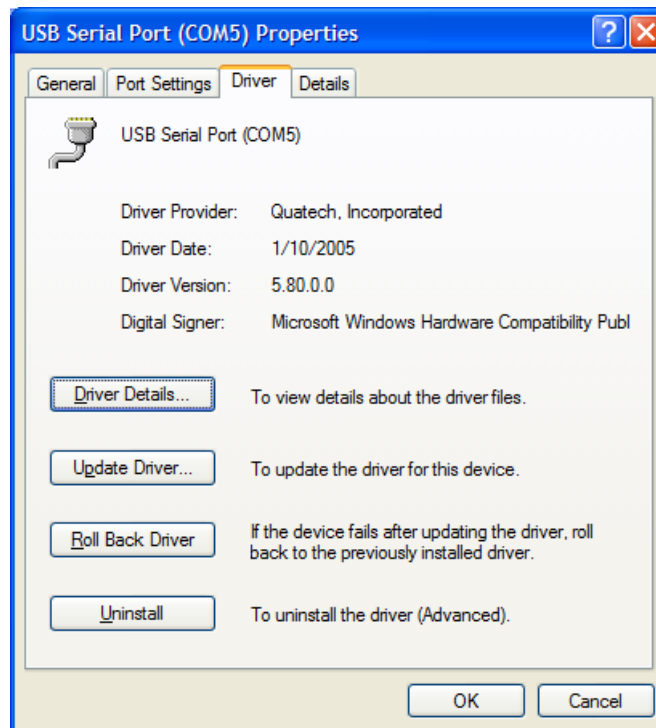
Figure 19 - Windows XP/2000 USB serial port, Advanced settings box



Step	Procedure	Description
❑ Step 11	Use the drop down box to select the port whose settings you wish to change. Click Cancel to return to the Port Settings tab.	
❑ Step 12	Click the Driver tab to view the driver information and update the driver.	<i>The USB Serial Driver properties dialog box displays.</i>

Figure 20 - Windows XP/2000 USB serial port properties, Driver box

Figure 20 illustrates the USB Serial Ports Driver dialog, which lets you view the driver details and update, roll back (XP only), and uninstall the driver:



Step	Procedure	Description
❑ Step 13	You have several options:	

Step	Procedure	Description
	<ul style="list-style-type: none"> ➤ View detailed driver information ➤ Update the device drivers ➤ Uninstall your USB-to-Serial adapter. ➤ Return to the previously installed driver. (XP only) ➤ Save your changes and exit. ➤ Abandon your changes and return to the Device Manager. 	<p><i>See below.</i></p> <p><i>Don't use this option. Uninstall the entire device instead by using the Driver dialog for the multiport serial adapter.</i></p>
❑ Step 14	Click the Driver Details button to view detailed driver information.	<i>The Driver File Details dialog box opens. See the following figure.</i>

Figure 21 - Windows XP/2000 USB serial port, Driver file details box

Figure 21 illustrates the Driver Details dialog, which tells you the name and location of the driver files, the provider, file version, copyright date, and digital signature status of the driver.



Step	Procedure	Description
❑ Step 15	<p>The Driver File Details dialog box displays the following information</p> <ul style="list-style-type: none"> ➤ Provider ➤ File version ➤ Copyright ➤ Digital Signer (Windows XP only) <p>Click OK to return to the Driver tab.</p>	<p><i>Quatech is the provider.</i></p> <p><i>This is the version of the installed software.</i></p> <p><i>Indicates whether Microsoft has approved this version.</i></p>
❑ Step 16	Click Cancel to close the dialog.	

Setting advanced options

The USB-to-Serial port advanced properties can be altered from the Device Manager window. Options for each serial port can be individually controlled.

Changes are applied:

- To all serial ports when the USB-to-Serial adapter is unplugged from the USB cable and plugged back in,

OR

- To a single port the next time an application opens the serial port.

Operating Mode (MEI adapters only)

RS-232 (default)

Note: The serial port's LED will glow red in RS-232 mode.

This mode configures the serial port to use an RS-232 electrical interface. Each UART's transmit drivers and receivers are always active in this mode.

RS-422/485 Full Duplex (4-wire)

Note: The serial port's LED will glow green in RS-422/485 mode.

This mode configures the serial port to use an RS-422/485 electrical interface. Each UART's transmit drivers are always active in this mode. This mode allows simultaneous transmit and receive operation. Transmit and receive data move over separate dedicated pairs of conductors in the attached cable. The AuxOut/AuxIn signals are also available in 4-wire mode.

RS-422/485 Half Duplex (2-wire) Auto-Toggle

Note: The serial port's LED will glow green in RS-422/485 mode.

Note: The Auto-Toggle mode is the best choice for most half-duplex scenarios. It offers the best performance and the best ease-of-use.

This mode configures the serial port to use an RS-422/485 electrical interface. Transmit and receive operations share a single pair of conductors in the attached cable, so communication occurs in only one direction at a time. This configuration is often referred to as "multidrop."

The transmit drivers are automatically enabled before data is transmitted, then disabled immediately after all data has been transmitted. This feature is implemented in hardware for near-instantaneous response.

RS-422/485 Half Duplex (2-wire) RTS control

Note: The serial port's LED will glow green in RS-422/485 mode.

This mode configures the serial port to use an RS-422/485 electrical interface. The half-duplex operation is the same as in the Auto-Toggle mode, except that the RTS signal is used to control the transmit drivers instead of the automatic control.

The software application can disable the port's transmit drivers by deasserting the UART's RTS output. To allow transmission again, the software application must assert the RTS output.

RS-422/485 Half Duplex (2-wire) DTR control

Note: The serial port's LED will glow green in RS-422/485 mode.

This mode configures the serial port to use an RS-422/485 electrical interface. This mode operates the same as Half Duplex using RTS, except that the UART's DTR output is used.

Receiver active... (MEI adapters only)

In RS-422/485 half-duplex operating modes, the serial port's receivers can be set to be active all the time or to be active only when the port is not transmitting. The desired choice is selected from the dropdown box.

Always (default)

Select this option to force the receivers to be active all the time. This selection will cause the receiver to hear the echo of whatever the serial port transmits.

Only when not transmitting

This selection is useful for scenarios where the serial port should not hear the echo of its own transmissions. The receivers will be disabled whenever the serial port transmits data.

AuxOut/AuxIn (MEI adapters only)

This setting determines which signals are routed to the AuxIn and AuxOut pins of the serial port connectors. Regardless of which setting is chosen, each UART's DTR output is internally looped back to its own DSR, DCD, and RI inputs.

Loopback (default)

Note: In half-duplex (2-wire) modes, the UART's RTS output is looped back to its CTS input.

Select this choice when only transmit and receive data signaling is required.

- Each UART's RTS output is internally looped back to its CTS input.
- Each port's AuxIn signal pair is looped back to its AuxOut signal pair at the connector.

RTS/CTS

Select this choice when hardware flow control is required.

- Each UART's RTS output and CTS input are routed to the AuxOut and AuxIn signal pairs, respectively.

Low-Latency Mode

Low-latency mode is an optional setting that disables most data buffering in the device to reduce delays in reporting received data.

Unchecked (default)

Leave the box unchecked for excellent performance in most applications. It is the best balance of performance and responsiveness.

- The serial port can make use of a deep data buffer.
- Buffer trigger levels are automatically tuned according to the baud rate selected by the application.
- High data rates are more easily supported.

Checked

Note: In low-latency mode, the overall throughput of the device is reduced, especially when multiple serial ports are operating together.

Select this choice when only when the application cannot tolerate the slight delays inherent in normal operation.

- This mode heavily favors responsiveness over throughput.
- Data buffers remain enabled, but trigger levels are set to single characters.

Troubleshooting

Note: Any unauthorized repairs or modifications will void the adapter's warranty.

This section lists some common problems and their causes. If the information below does not provide a solution, contact Quatech technical support.

Problem	Cause	Solution
The USB-to-Serial adapter cannot communicate with other equipment.	➤ The cables are not connected correctly.	<ol style="list-style-type: none"> 1. Check all cables to make sure that they are connected correctly. 2. Make sure that each cable is securely attached.
	➤ The device driver is not installed.	<ol style="list-style-type: none"> 1. Double check the Device Manager per the instructions in Using Device Manager to ensure that drivers are installed correctly and that all devices are working properly. 2. Try uninstalling the USB adapter from the Device Manager window and then repeat the hardware installation instructions.
	➤ The USB port is faulty.	<ol style="list-style-type: none"> 1. If possible, connect a known good USB device to the PC or hub connector and see if it operates properly.

Appendix A

Specifications

Bus interface	USB Specification 2.0, high speed 480 Mbps. Backward compatible with USB 1.1 full speed 12 Mbps.														
Baud rates	Up to 921,600 bps. Factors impacting performance include: <ul style="list-style-type: none"> ➤ Hardware flow control ➤ Horsepower of the host computer ➤ Quality of and length of cables ➤ Continuous or “bursty” data 														
Ports	<table border="0"> <tr><td>SSU2-100:</td><td>1</td></tr> <tr><td>DSU2-100:</td><td>2</td></tr> <tr><td>QSU2-100:</td><td>4</td></tr> <tr><td>ESU2-100:</td><td>8</td></tr> <tr><td>DSU2-400:</td><td>2</td></tr> <tr><td>QSU2-400:</td><td>4</td></tr> <tr><td>ESU2-400:</td><td>8</td></tr> </table>	SSU2-100:	1	DSU2-100:	2	QSU2-100:	4	ESU2-100:	8	DSU2-400:	2	QSU2-400:	4	ESU2-400:	8
SSU2-100:	1														
DSU2-100:	2														
QSU2-100:	4														
ESU2-100:	8														
DSU2-400:	2														
QSU2-400:	4														
ESU2-400:	8														
UARTs	<table border="0"> <tr> <td>SSU2-100:</td> <td>16550 UART with 1024-byte secondary FIFO buffering for both transmit and receive.</td> </tr> <tr> <td>All others:</td> <td>Custom high-speed UARTs with 1024-byte FIFOs for both transmit and receive. Automatic hardware and software flow control.</td> </tr> </table>	SSU2-100:	16550 UART with 1024-byte secondary FIFO buffering for both transmit and receive.	All others:	Custom high-speed UARTs with 1024-byte FIFOs for both transmit and receive. Automatic hardware and software flow control.										
SSU2-100:	16550 UART with 1024-byte secondary FIFO buffering for both transmit and receive.														
All others:	Custom high-speed UARTs with 1024-byte FIFOs for both transmit and receive. Automatic hardware and software flow control.														
Transceivers:	<u>RS-232 Output</u>														
SSU2-100	Voltage Swing: +/-5V min, +/-5.4V typical														
DSU2-100	<u>RS-232 Input</u>														
QSU2-100	Voltage Range: -15V min, +15V max														
ESU2-100	Input Threshold Low: 0.6V min, 1.0V typical Input Threshold High: 2.4V max, 1.5V typical														
Transceivers:	RS-232, see above.														
DSU2-400	RS-422/485:														
QSU2-400	Differential Driver Output (50Ω Load): +2V min														
ESU2-400	+3.3V max														
	Differential Driver Output (27Ω Load): +1.5V min														
	+3.3V max														
	High Input: +2V min														
	Low Input: +0.8V max														
	Driver Rise or Fall Time:														
	5 ns typ, 20.5 ns max														
	Driver Input to Output Delay:														
	20 ns min, 40 ns typ, 60ns max														
	Receiver Input to Output Delay:														
	40 ns min, 70 ns typ, 100 ns max														

Connectors	DB-9 Male
Dimensions	3.6" L x 1.7" W x 1.0" H (SSU) 9.18" L x 5.25" W x 1.675" H (DSU/QSU) 9.18" L x 5.25" W x 2.363" H (ESU)
Power Requirements	USB bus powered (no external power connection required) Suspend Power: < 500 uA Unconfigured Power: < 100 mA Configured Power: < 500 mA
Temperature:	Operating: 0 to 70 C Storage: -50 to 80 C
Humidity	10 to 90%
OS Support	Windows 2000, Windows XP, Windows Vista, Linux

Appendix B

Warranty information

Quatech, Inc. warrants the SSU2/DSU2/QSU2/ESU2-100/400 to be free of defects for five (5) years from the date of purchase. Quatech, Inc. will repair or replace any board that fails to perform under normal operating conditions and in accordance with the procedures outlined in this document during the warranty period. Any damage that results from improper installation, operation, or general misuse voids all warranty rights. No representation is made regarding the suitability of this product for any particular purpose.

Please complete the following information and retain for your records.

DATE OF PURCHASE: _____
MODEL NUMBER: SSU2/DSU2/QSU2/ESU2-100/400
PRODUCT DESCRIPTION: USB-to-Serial Adapter
SERIAL NUMBER: _____

All products returned to Quatech for either warranty or non-warranty repair **MUST** be assigned a Returned Material Authorization (RMA) number prior to shipment. This RMA number must be clearly marked on the exterior of the product's return packaging and in any correspondence to ensure proper routing and prompt attention. To obtain an RMA number, contact Quatech Technical Support Department at 1-800-553-1170 or (330) 655-9000. In order to prevent damage to returned merchandise during shipment, please package electronic components in anti-static/shock proof materials.

For **warranty** repair/returns, please have the following information available when contacting the Technical Support department:

1. Model number and serial number of the product under warranty
2. Repair instructions and/or specific description of the problem

For **non-warranty** repairs or upgrades, contact the Technical Support department for current repair charges and please have the following information available:

1. Purchase order number to cover the cost of the service
2. Model number and serial number of the product
3. Repair or upgrade instructions relative to the product