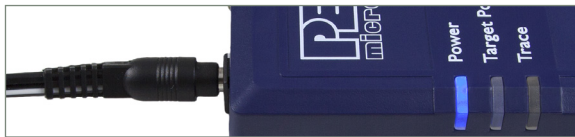


1 Install Software

The accompanying software includes all necessary drivers and configuration utilities needed for the Tracelink. After installation is complete, make sure the PC is rebooted before moving on to the configuration step.

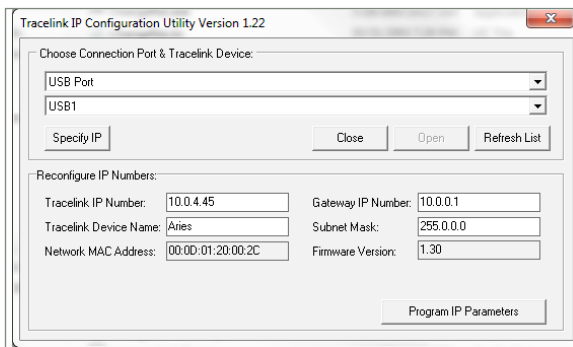


2 Power On Tracelink



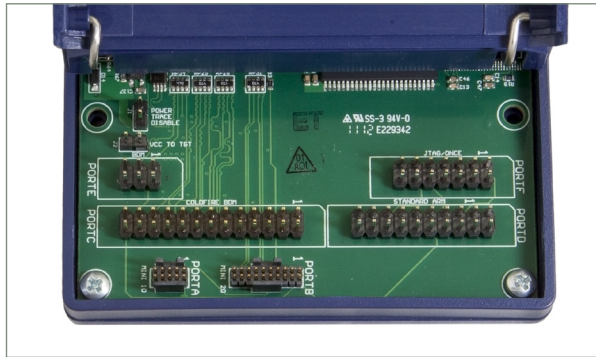
Power up the Tracelink by connecting the included 9V power supply. A blue LED will be illuminated on the Tracelink to indicate it is receiving power.

3 Ethernet Configuration



Connect the Tracelink to the PC using a USB connection. Run the ConfigureIP software utility to set up the network parameters (IP address, subnet mask, etc.). The Ethernet port will not function properly until this one-time configuration is complete. You may refer to the Tracelink User Manual for an in-depth description. If the Tracelink Ethernet connection is not required, this step may be skipped.

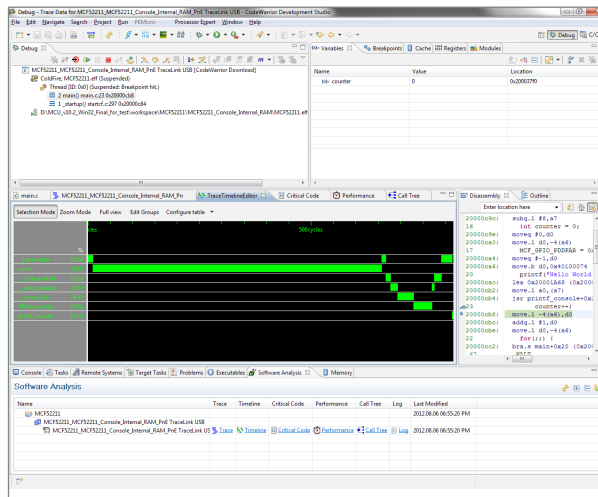
4 Hardware Setup



Connect the appropriate ribbon cable between the Tracelink and the target board. The Tracelink case flips open for easy access to the ribbon cable connectors. Power up the target board. A yellow LED on the Tracelink will be illuminated to indicate that it is detecting target power.

Finally, connect the USB or Ethernet cable from the Tracelink to the host PC.

5 Launch PC Software



The Tracelink is now ready to be used with PC software to debug and analyze trace. Please refer to the documentation from the software vendor (e.g., P&E software, Freescale™ CodeWarrior) for more details on any additional configuration that may be required.

► The Tracelink User Manual and other resources are available at:

pemicro.com/tracelink

Production Programming

Once you have accomplished the development stage of your project, you may need a hardware tool to allow you to easily execute low- or high-volume production programming. P&E's Cyclones are extremely flexible tools designed for debugging, testing, and in-circuit flash programming of Freescale microcontrollers.

Cyclone PRO



Cyclone MAX

Features

- PC- & User-Controlled Stand-Alone Operation
- Interactive Programming via Host PC
- In-Circuit Debugging, Programming, and Testing
- Communication via USB, Serial, and Ethernet Ports
- Multiple image storage
- LCD screen menu interface
- Supported by P&E software & Freescale's CodeWarrior

The Cyclone comes with intuitive configuration software and interactive programming software, as well as easy to use automated control software.

For more information about P&E's Cyclones, please visit us at pemicro.com.



TRACELINK
Quick Start Guide