

DIMENSIONS ARE IN INCHES		UNLESS OTHERWISE NOTED	TOLERANCES ARE:
ONE PLACE DECIMALS ±.1[2.5]	THREE PLACE DECIMALS ±.005 [.13]	ANGLES	± 2°
TWO PLACE DECIMALS ±.01[.25]	FOUR PLACE DECIMALS ±.0020[.05]		

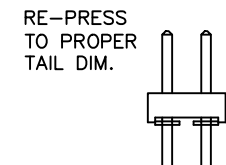
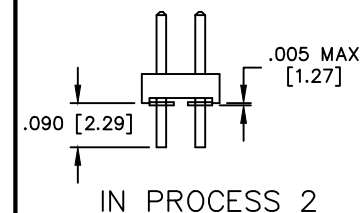
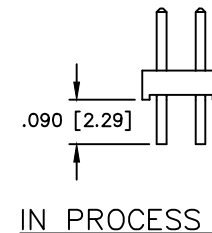
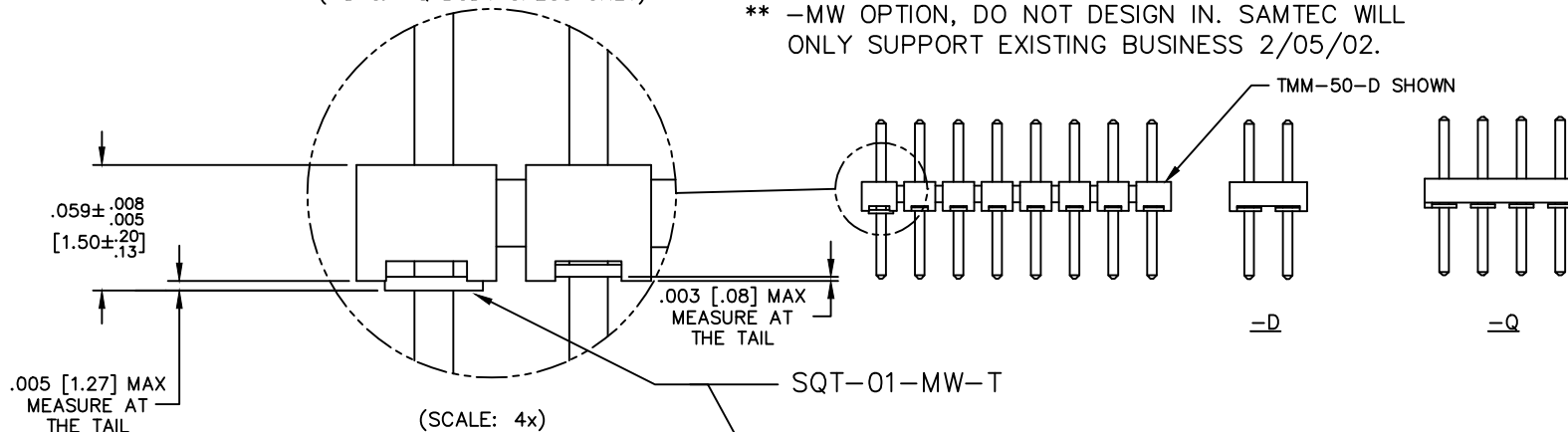
TITLE: 2mm
TERMINAL STRIP
ASSEMBLY

DWG NO: TMM-1XX-XX-XX-X-XX-XXX
SHEET 2 OF 2

FIG. 2

** -MW: METAL WASHER
(ONE PER POSITION)
(-D & -Q BODY SPECS ONLY)

** -MW OPTION, DO NOT DESIGN IN. SAMTEC WILL
ONLY SUPPORT EXISTING BUSINESS 2/05/02.



IN PROCESS 4
-T PLATING ONLY

LEAD STYLE	NUMBER OF BAND MARKS ALLOWED IN THE POST AREA			
	PIN A	PIN B	PIN C	PIN D
-01	0	0	0	0
-02	0	0	0	0
-03	1	1	1	1
-04	0	0	0	0
-05	0	0	0	0
-06	0	0	0	0

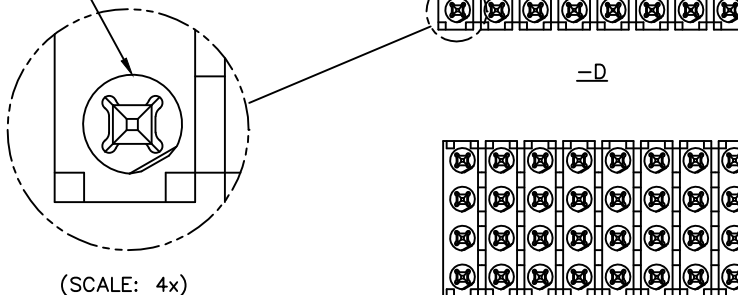
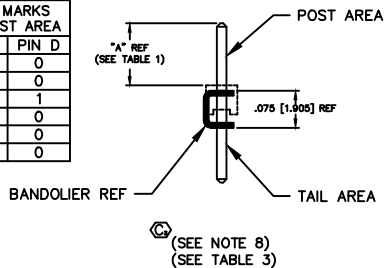
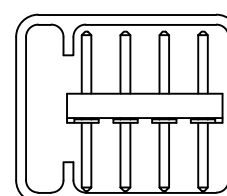
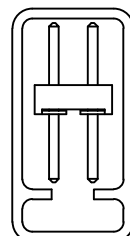
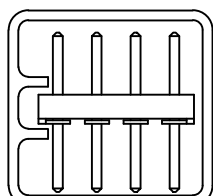
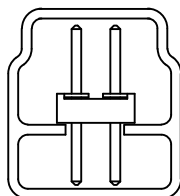


TABLE 2
-MW OPTION ONLY

SUFFIX	BODY SPEC	TUBE	PLUG (2)
-01	-D	PT-1-24-03-16	TP-03
-02			
-03			
-01	-Q	PT-1-24-03-38	TP-07
-02			
-03			
-04	-Q	PT-1-24-04-09	TP-07
-05			
-04	-D	PT-1-24-04-09	TP-07
-05			



PROPRIETARY NOTE
THIS DOCUMENT CONTAINS INFORMATION CONFIDENTIAL AND PROPRIETARY TO SAMTEC INC. AND SHALL NOT BE REPRODUCED OR TRANSFERRED TO OTHER DOCUMENTS OR DISCLOSED TO OTHERS OR USED FOR ANY PURPOSE OTHER THAN THAT FOR WHICH IT WAS OBTAINED WITHOUT THE EXPRESSED WRITTEN CONSENT OF SAMTEC INC.

samtec

EXISPROD\ASSEMBLY\2MM
TMM-ASM2
520 PARK EAST BLVD. NEW ALBANY, INDIANA 47150
PHONE (812) 944-6733 P.O. BOX 1147
CODE 55322

MADE BY:
REIDINGER 11-2-90

TMM-1XX-XX-XX-X-XX-XXX
SHEET 2 OF 2

PLOT SCALE 1=2