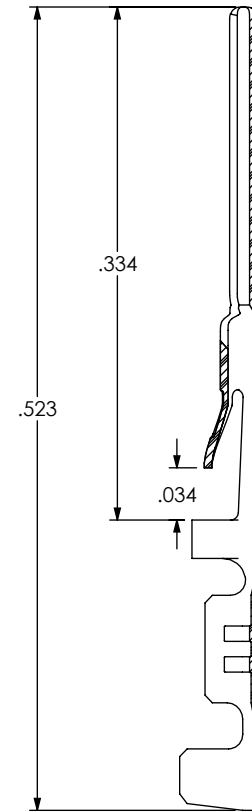
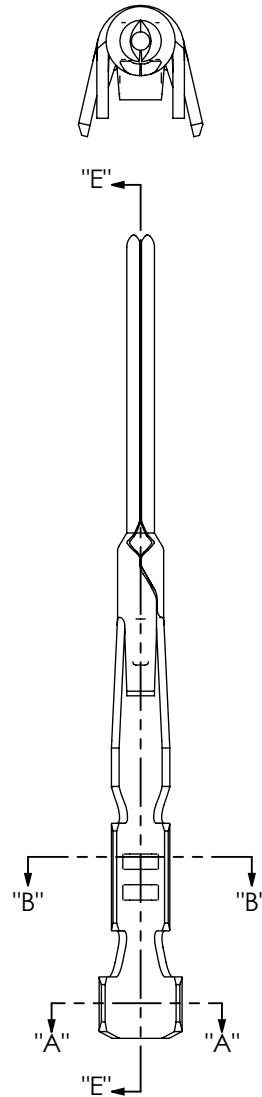
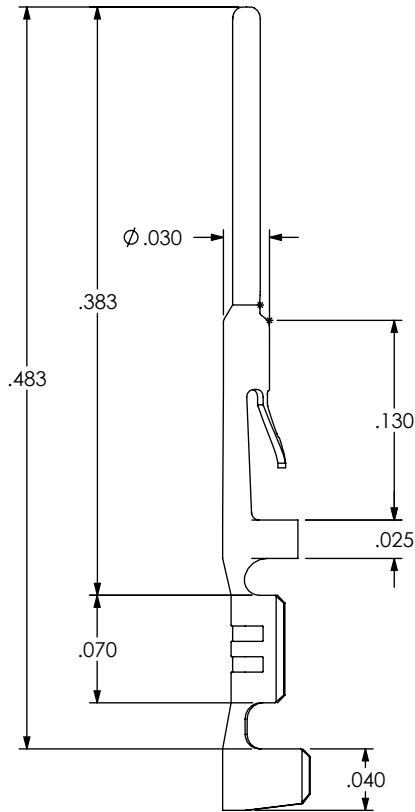


ALL DIMENSIONS ARE REFERENCE
(see T-1M44-XXXX-XX FOR CONTROL PRINT)

DO NOT
SCALE FROM
THIS PRINT



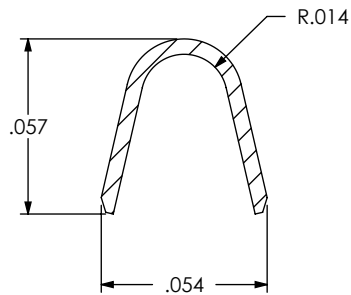
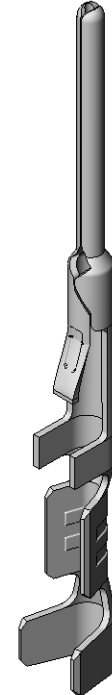
SECTION "E"-"E"

T1M44-X-XXXX-01-XX

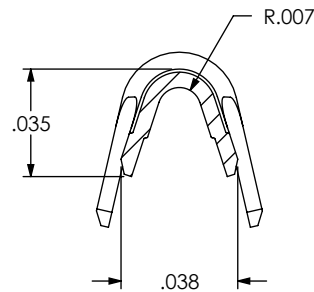
SUPPLIED
-L: LOOSE
-R: REEL
-M: MINI REEL

PLATING SPECIFICATION
-GF: GOLD FLASH
-G: GOLD
-H: HEAVY GOLD

LEAD STYLE
-2830: 28-30 AWG



SECTION "A"-"A"
SCALE 16:1



SECTION "B"-"B"
SCALE 16:1

UNLESS OTHERWISE SPECIFIED,
DIMENSIONS ARE IN INCHES.
TOLERANCES ARE:
DECIMALS ANGLES
.XX: ± 2°
.XXX: ±
.XXXX: ±

PROPRIETARY NOTE
THIS DOCUMENT CONTAINS INFORMATION
CONFIDENTIAL AND PROPRIETARY TO
SAMTEC, INC. AND SHALL NOT BE REPRODUCED
OR TRANSFERRED TO OTHER DOCUMENTS OR
DISCLOSED TO OTHERS OR USED FOR ANY
PURPOSE OTHER THAN THAT WHICH IT WAS
OBTAINED WITHOUT THE EXPRESSED WRITTEN
CONSENT OF SAMTEC, INC.

samtec

520 PARK EAST BLVD, NEW ALBANY, IN 47150
PHONE: 812-944-6733 FAX: 812-948-5047
e-Mail: info@SAMTEC.com code: 55322

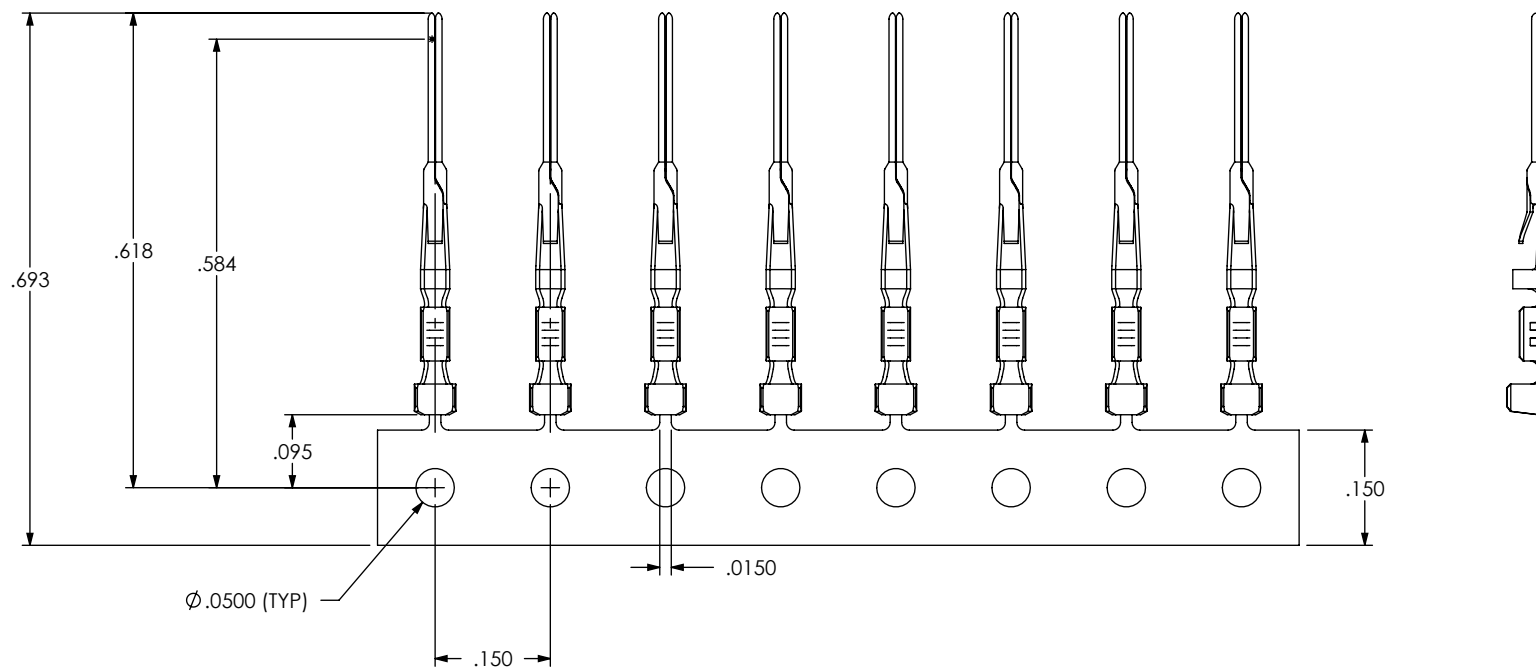
MATERIAL: DO NOT SCALE DRAWING SHEET SCALE: 8:1
BeCu C172, BRUSH ALLOY 190, 1/2 TEMPER HM
THICKNESS: .0050 ± .0003

DESCRIPTION:
.050" C.L. DISCRETE WIRE TERMINAL

DWG. NO.
T1M44-X-XXXX-01-XX

BY: G. PURVIS 12/21/2007 SHEET 1 OF 2

CARRIER SPECIFICATIONS



REEL SPECIFICATIONS

PLATED T-1MM PARTS ARE TO BE UNWOUND THEN REWOUND AND COUNTED,
 35,000+100/-0 PCS POSITIONED AS SHOWN ON SAMTEC REEL WITH VIEWPORTS,
 LABELED T1M44 WITH APPROPRIATE PLATE CALL OUT AND LABEL PLACED AS SHOWN.
 MAXIMUM OF 2 SPLICES PER REEL, SPLICES ARE NOT TO BE CONNECTED,
 NUMBER OF SPLICES TO BE MARKED ON EACH REEL.
 REELED PARTS TO BE INTERLEAVED WITH PAPER BETWEEN EACH LAYER OF PARTS,
 SECURELY CONNECT INTERLEAF SPLICE.
 OUTER WRAP SHALL RECEIVE RB-24-0.75-P PROTECTIVE REEL BAND.

-M: MINI REEL

PLATED T-1M114 PARTS TO BE PULLED, PLATING OPTION CONFIRMED,
 5,000 +300/-0 PCS POSITIONED AS SHOWN ON SAMTEC REEL WITH VIEWPORTS,
 LABELED CC09M WITH APPROPRIATE PLATING CALLOUT AND LABEL PLACED AS SHOWN.
 MAXIMUM NO OF SPLICES PER REEL: 1. SPLICES ARE NOT TO BE CONNECTED.
 NUMBER OF SPLICES TO BE MARKED ON EACH REEL.
 REELED PARTS TO BE INTERLEAVED WITH PAPER BETWEEN EACH LAYER OF PARTS.
 ONE SPLICE IN INTERLEAF ALLOWED PER REEL. SECURELY CONNECT INTERLEAF SPLICE.
 OUTER WRAP SHALL RECEIVE RB-24-0.75-P PROTECTIVE REEL BAND.
 DUE TO PLATING REQUIREMENTS CONTACT SAMPLES MAY BE REMOVED INTERMITTINGLY
 FROM THE BANDOLIER RESULTING IN SMALL GAPS BUT DOES NOT AFFECT FINAL COUNT.

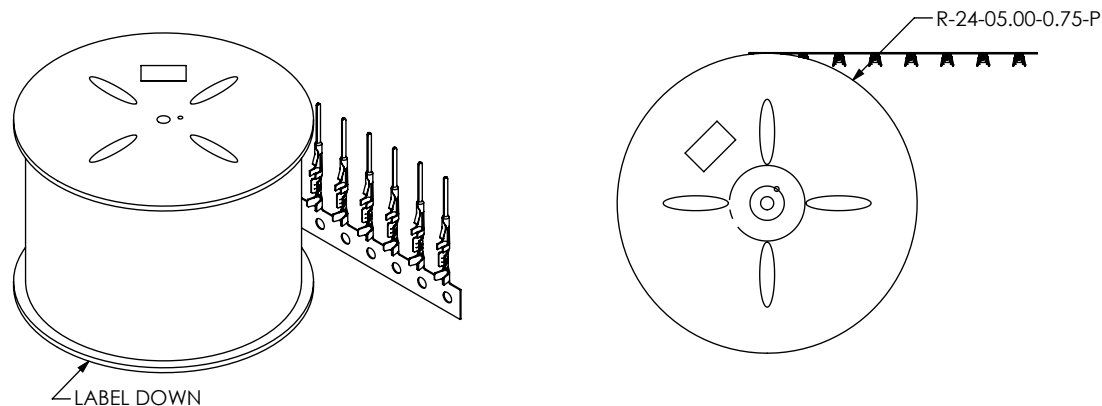


TABLE 1

SUPPLIED	REEL PART NUMBER	"A"	"B"
-R	R-24-05.00-0.75-P	24.0	5.50
-M	MR-12-5.375-0.75-C	12.0	5.375

PROPRIETARY NOTE

THIS DOCUMENT CONTAINS INFORMATION
 CONFIDENTIAL AND PROPRIETARY TO
 SAMTEC, INC. AND SHALL NOT BE REPRODUCED
 OR TRANSFERRED TO OTHER DOCUMENTS OR
 DISCLOSED TO OTHERS OR USED FOR ANY
 PURPOSE OTHER THAN THAT WHICH IT WAS
 OBTAINED WITHOUT THE EXPRESSED WRITTEN
 CONSENT OF SAMTEC, INC.

DO NOT SCALE DRAWING

SHEET SCALE: 1:0.166667

samtec

520 PARK EAST BLVD, NEW ALBANY, IN 47150
 PHONE: 812-944-6733 FAX: 812-948-5047
 e-Mail: info@SAMTEC.com code: 55322

DESCRIPTION:

.050" C.L. DISCRETE WIRE TERMINAL

DWG. NO.

T1M44-X-XXXX-01-XX

BY: G. PURVIS 12/21/2007 SHEET 2 OF 2