



Wireless Technology to Control and Monitor Anything from Anywhere™



SNAP Link Serial Wireless Adapter

High Performance Wireless RS-485/422

The **SNAP® Link™** RS-485 adapter is a robust, mesh networking, wireless serial product that makes it easy and quick to connect your RS-485 devices. SNAP Link adapters increase the distance beyond physical wire constraints while reducing installation, outages from lightning, on-going maintenance and line noise problems.

Compared to the competition, SNAP Link RS-485 wireless adapters provide the highest performance, longest distance and quickest configuration in the industry.

Now, linking two (or more) physical serial ports or devices is a SNAP. Just connect each device to one of the SNAP Link adapters and press the Mode button to automatically pair them together, and you're done.

Units are powered by USB or an external AC adapter, included with the product.

Compare Us!

- *Highest Bandwidth & Longest Distance in the Industry (Up to 3 Miles Line of Site)*
 - *Most Reliable, Robust Mesh Network*
 - *Easiest Setup* • **BEST VALUE**
-

- SNAP — Instant-ON, Self-Healing Mesh Network
- RS-485/422 supports two and four wire, half & half duplex
- Up to 3 Mile Range Line of Sight (LoS) outdoors and 1000 feet LoS indoors; LoS not required, but range may be shorter.
- Spread Spectrum (DSSS) technology surmounts noisy environments
- Configure with Free EasySet software or Dip switches
- LEDs show signal strength & data transmission activity
- Supports One-to-One and One-to-Many Relationship Configurations
- -40° to 85°C Operating Temperature, Industrial Use
- No change to existing equipment
- RP-SMA antenna connection (Antenna provided)
- Micro-B USB port for easy connection to PCs (no serial-to-USB adapter required)



- SNAP Link RS-485/422
 - Supports Wireless ModBus RTU, SCADA & other protocols
- Includes SNAP Encryption

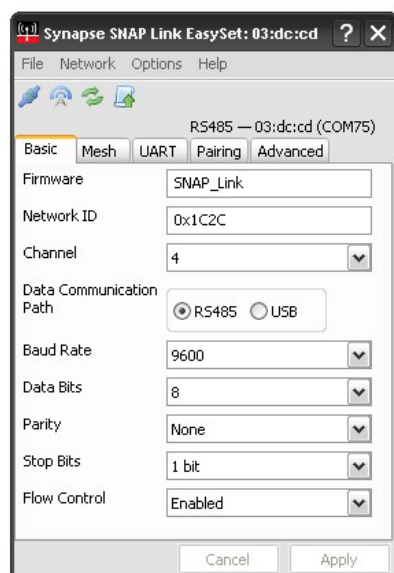


Wireless Technology to Control and Monitor Anything from Anywhere™



SNAP Link Serial Wireless Adapter

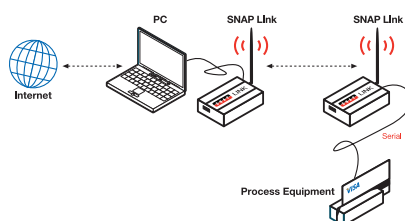
High Performance Wireless RS-485/422



The *SNAP Link EasySet* software applet is an easy-to-use configuration tool that streamlines the setup and configuration of SNAP Link wireless adapters. *SNAP Link EasySet* provides visual indicators and easy-to-change configuration parameters such as baud rate, channel and network ID, data bits, parity, stop bits, flow control and more. *SNAP Link EasySet* is a visually intuitive tool for configuring the SNAP Link products.

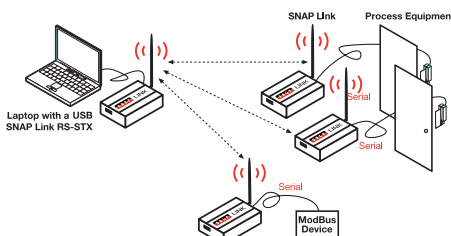
SYNAPSE Wireless, Inc.
500 Discovery Drive
Huntsville, Alabama 35806
877-982-7888
synapse-wireless.com

A pair of SNAP Link RS-485/422 wireless serial adapters can replace a cable up to 3 miles (LoS).



Example: One to One RS-485/422 pairing.

One SNAP Link RS-485/422 controlling multiple SNAP Link serial wireless adapters.



Example: One to Many RS-485/422 pairing; talking to two (2) door pads and one (1) ModBus device.

Specifications	Model: SL485K
GENERAL	802.15.4, 2.4 GHz
Radio Frequency	2.4000 – 2.4835 GHz
Spreading Spectrum Type	Direct Sequence (DSSS)
Channel Capacity	16 isolated channels; 65535 logical networks per channel
Serial Data Interface	Two: Selectable between RS-485/422 or USB
Raw Data Rate	250 Kbps
Supported Baud Rate	300, 1200, 2400, 4800, 9600, 19200, 38400, 57600, 115200
Sustainable Max. Throughput	38400 bps
LED Status	Power, Signal Strength, Connectivity, Data Activity
POWER REQUIREMENT	
Supply Voltage	4 - 5.25 VDC; Standard Micro-B USB Universal Connector
Max. Power Consumption	RS-485: .825W
PHYSICAL PROPERTIES	
Enclosure Type	Extruded aluminum, black anodized, wall mount brackets included
Enclosure Size	1.18H x 2.5W x 3.15L in (3 x 6.4 x 8 cm)
Weight	RS-485: 6.25 oz (177 g)
Operating Temperature	-30° to +85°C (Included wall plug: 0 - +45°C)
Operating Humidity	10 to 90% non-condensing
Wireless Link Failure	Integrated Wireless Link Failure LED indicator
RF PROPERTIES	
Protocol	IEEE 802.15.4, SNAP
Indoor Range (w/ Included Antenna)	Up to 1000 feet indoors Line of Sight (LoS)
Outdoor Range (w/ Included Antenna)	Up to 3 miles (LOS)
RF Transmit Power	63 mW (18 dBm)
Receive amplifier Gain	10 dBm
Receiver Sensitivity	-102 dBm at 1% packet error rate
Features	Real-time RSSI signal strength indicator; Terminal Emulation; AT Command; Modem emulation
ANTENNA	
Type Included	External Reverse Polarity SMA connector, omni directional
Gain	3.2 dBi
Length	5.875 in (14.9 cm)
Impedance	50 Ohms unbalanced
CERTIFICATIONS	
FCC Part 15, Class B	Yes
Power Supply	UL
RoHS (lead free) Compliant	Yes
Energy Star Compliant	Yes
Industry Canada	4214A 12008