



Wireless Technology to Control and Monitor Anything from Anywhere™



SNAP Link Serial Wireless Adapter

High Performance Wireless RS-232

The **SNAP® Link™** RS-232 adapter is a robust, mesh networking, wireless serial product that makes it easy and quick to connect your RS-232 devices. SNAP Link adapters increase the distance beyond physical wire constraints while reducing costs from installation, outages from lightning, on-going maintenance and line noise problems.

Compared to the competition SNAP Link RS-232 wireless adapters provide the highest performance, longest distance and quickest configuration in the industry.

Now, linking two (or more) physical serial ports or devices is a SNAP. Just connect each device to one of the SNAP Link adapters and press the Mode button to automatically pair them together, and you're done.

Units are powered by USB or an external AC adapter, included with the product.

Compare Us!

- *Highest Bandwidth & Longest Distance in the Industry (Up to 3 Miles Line of Site)*
 - *Most Reliable, Robust Mesh Network*
 - *Easiest Setup* • **BEST VALUE**
-

- SNAP — Instant-ON, Self-Healing Mesh Network
- RS-232 provides a DB-9 port with full hardware flow control
- Up to 3 Mile Range Line of Sight (LoS) outdoors and 1000 feet LoS indoors; LoS not required, but range may be shorter
- Spread Spectrum (DSSS) technology surmounts noisy environments
- Configure with Free EasySet software or Dip switches
- LEDs show signal strength & data transmission activity
- Supports One-to-One and One-to-Many Relationship Configurations
- -40° to 85°C Operating Temperature, Industrial Use
- No change to existing equipment
- Includes SNAP Encryption
- RP-SMA antenna connection (Antenna provided)
- Micro-B USB port for easy connection to PCs (no serial-to-USB adapter required)



SNAP Link RS-232

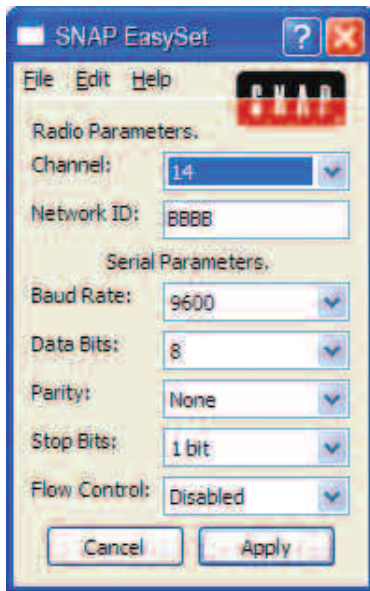


Wireless Technology to Control and Monitor Anything from Anywhere™



SNAP Link Serial Wireless Adapters

High Performance Wireless RS-232

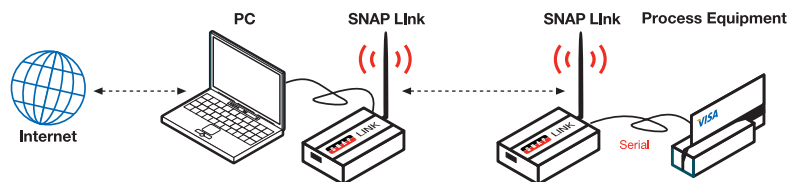


The *SNAP Link EasySet* software applet is an easy-to-use configuration tool that streamlines the setup and configuration of SNAP Link wireless adapters. *SNAP Link EasySet* provides visual indicators and easy-to-change configuration parameters such as baud rate, channel and network ID, data bits, parity, stop bits, flow control and more. *SNAP Link EasySet* is a visually intuitive tool for configuring the SNAP Link products.

SYNAPSE Wireless, Inc.
500 Discovery Drive
Huntsville, Alabama 35806
877-982-7888

synapse-wireless.com

A pair of SNAP Link RS-232 serial adapters can replace a cable up to 3 miles (LoS).



Example: One to One RS-232 pairing.

Specifications

Model: SL232K

GENERAL

Radio Frequency	802.15.4, 2.4 GHz
Spreading Spectrum Type	2.4000 – 2.4835 GHz 2.4000 – 2.4835 GHz
Channel Capacity	Direct Sequence (DSSS) Direct Sequence (DSSS)
Serial Data Interface	16 isolated channels; 65535 logical networks per channel
Raw Data Rate	Two: Selectable between RS-232 or USB
Supported Baud Rate	250 Kbps
Sustainable Max. Throughput	300, 1200, 2400, 4800, 9600, 19200, 38400, 57600, 115200
LED Status	38400 bps
	Power, Signal Strength, Connectivity, Data Activity

POWER REQUIREMENT

Supply Voltage	4 - 5.25 VDC; Standard Micro-B USB Universal Connector
Max. Power Consumption	RS-232: .6W

PHYSICAL PROPERTIES

Enclosure Type	Extruded aluminum, black anodized, wall mount brackets included
Enclosure Size	1.18H x 2.5W x 3.15L in (3 x 6.4 x 8 cm)
Weight	RS-232: 6.12 oz (174 g)
Operating Temperature	-30° to +85°C (Included wall plug: 0 - +45°C)
Operating Humidity	10 to 90% non-condensing
Wireless Link Failure	Integrated Wireless Link Failure LED indicator

RF PROPERTIES

Protocol	IEEE 802.15.4, SNAP
Indoor Range (w/ Included Antenna)	Up to 1000 feet indoors Line of Sight (LoS)
Outdoor Range (w/ Included Antenna)	Up to 3 miles (LOS)
RF Transmit Power	63 mW (18 dBm)
Receive amplifier Gain	10 dBm
Receiver Sensitivity	-102 dBm at 1% packet error rate
Features	Real-time RSSI signal strength indicator; Terminal Emulation; AT Command; Modem emulation

ANTENNA

Type Included	External Reverse Polarity SMA connector, omni directional
Gain	3.2 dBi
Length	5.875 in (14.9 cm)
Impedance	50 Ohms unbalanced

CERTIFICATIONS

FCC Part 15, Class B	Yes
Power Supply	UL
RoHS (lead free) Compliant	Yes
Energy Star Compliant	Yes
Industry Canada	4214A 12008
Europe	ETSI