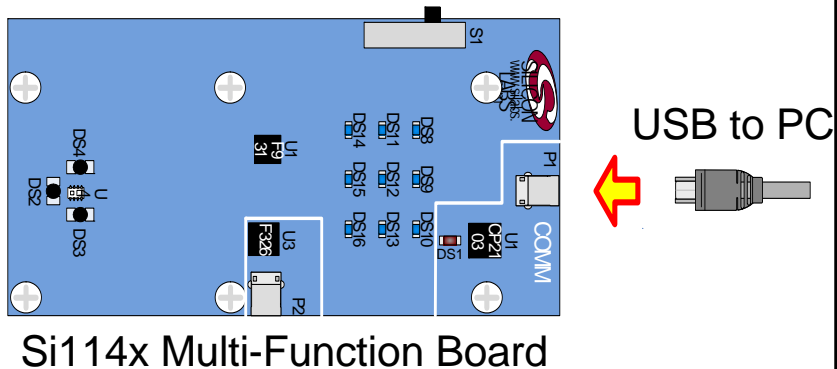
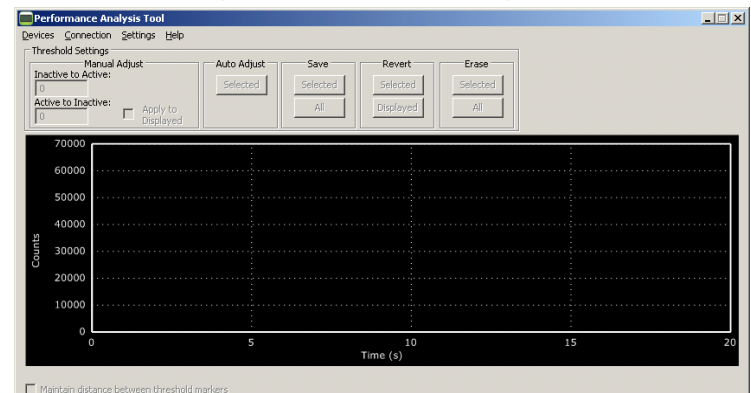


# Si114x MULTI-FUNCTION BOARD QUICK-START GUIDE

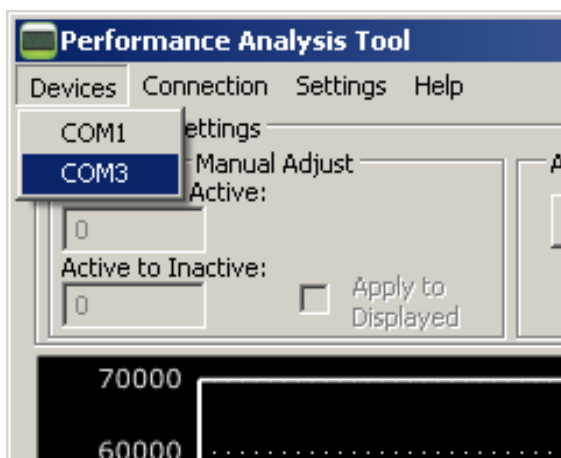
- 1 Connect the Si114x Multi-Function Board to the PC by plugging a USB cable into the COMM USB port. The red LED near the connector will light. The Switch S1 should be in its default upward position for the Top-Side to be active.



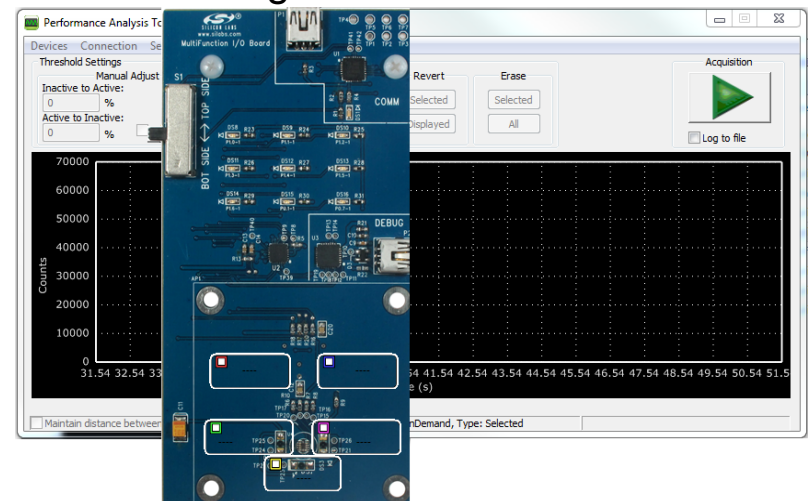
- 2 This board is compatible with the Si114x Performance Analysis Tool, which is part of the Optical Sensors Programmer's Toolkit available from [www.silabs.com](http://www.silabs.com). Starting the software will display the main analysis window.



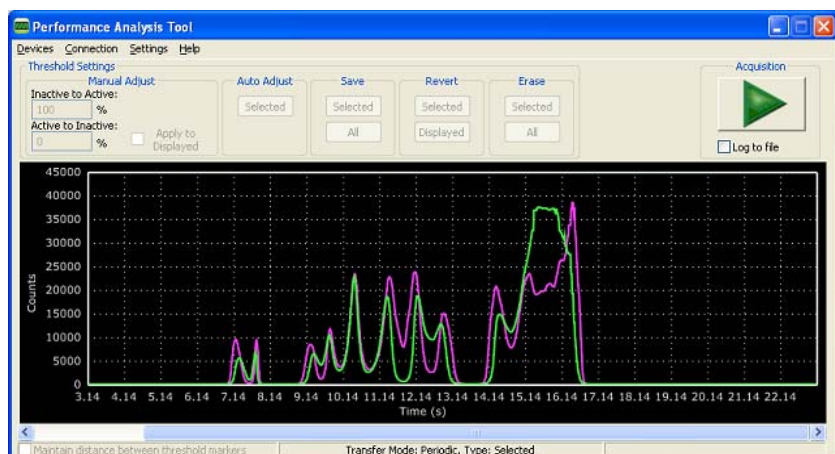
- 3 Click on *Devices*, and select the Evaluation Board from the list (the board will show up as a COM port, most commonly COM4 or COM3).



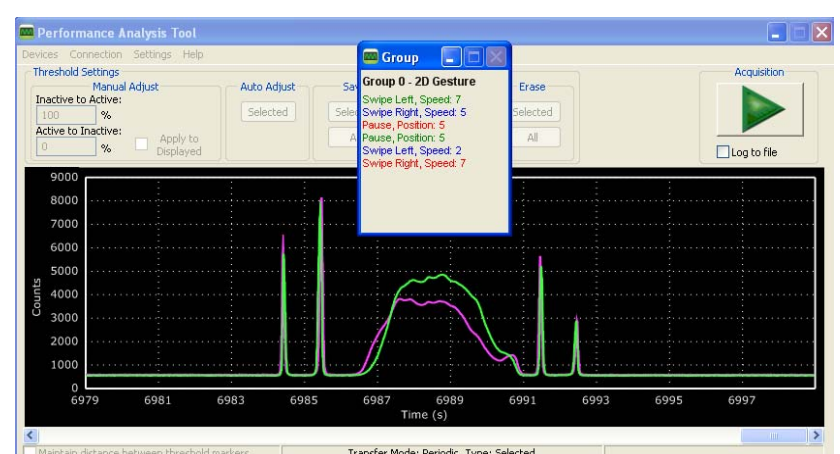
- 4 Check the signals that you wish to monitor on the picture of the board, and then press the green *Acquisition* arrow to begin data collection.



- 5 The real-time data will be graphed in the main window.



- 6 In addition to the real-time data graphed in the main window, any recognized gestures will be displayed in separate Group windows.



For more information, including supporting software and documentation, please visit the Silicon Labs Si114x Multi-Function Kit website located at <http://www.silabs.com/Si114xMFB>.