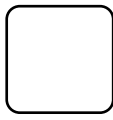
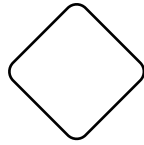


HFX SERIES I

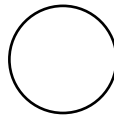
LIMITER PLATE OPTIONS



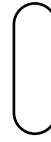
SQUARE



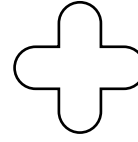
DIAMOND



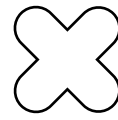
ROUND



SLOTTED
(X OR Y AXIS)

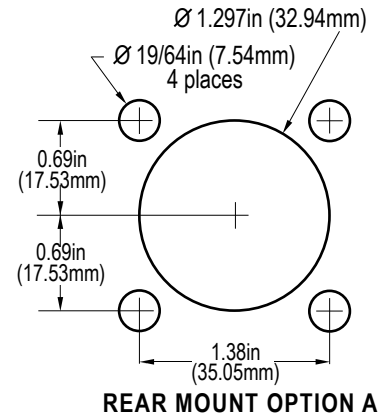
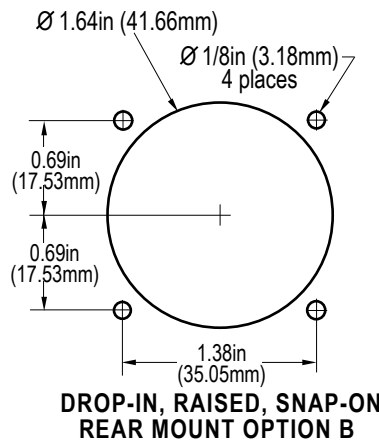
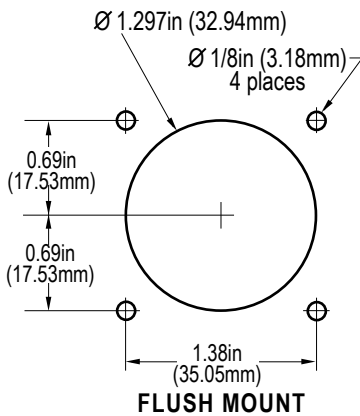


PLUS

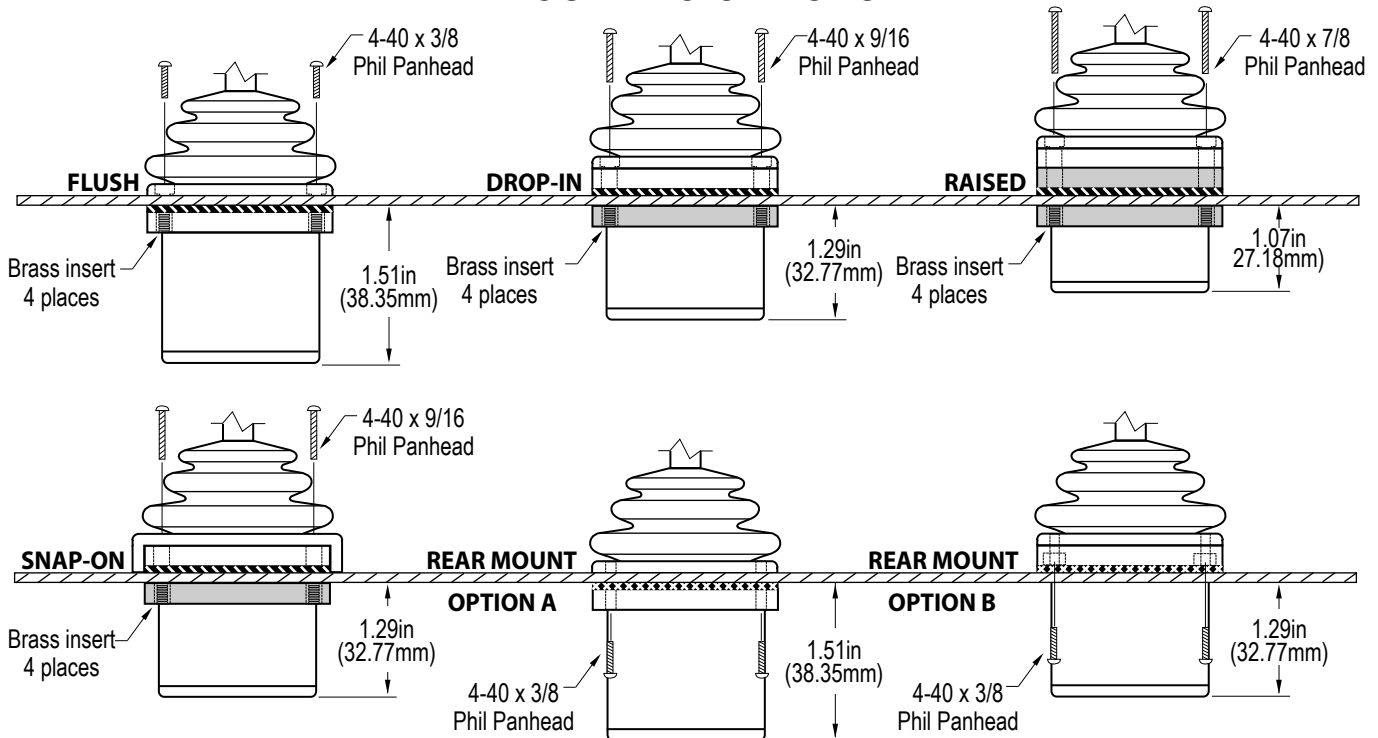


CROSS

PANEL CUTOUT DIMENSIONS



MOUNTING OPTIONS



	- Panel
	- 6mm spacer (0.24in)
	- Standard gasket
	- Rear mount gasket

Notes - The panel thickness can be 0.046in to 0.125in (1.17mm to 3.17mm), except for the Rear Mount Option A, where the maximum panel thickness is 0.063in (1.6mm).
 - A panel thickness of 1/16" (0.063in, 1.6mm) was considered for all the below-panel depth values.
 - The below-panel depth is extended by 0.40in (10.15mm) with the USB option.



CH PRODUCTS

970 Park Center Drive, Vista, CA 92081
 Tel: 760-598-2518 ♦ Fax: 760-598-2524
 www.CHProducts.com

TD049-12/04/07/VS