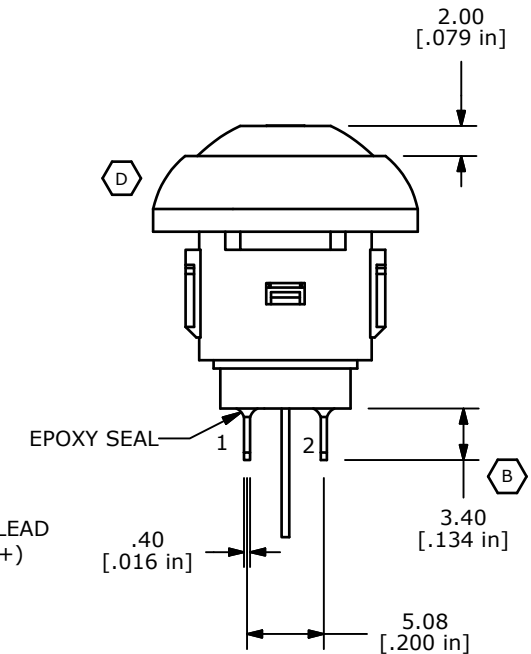
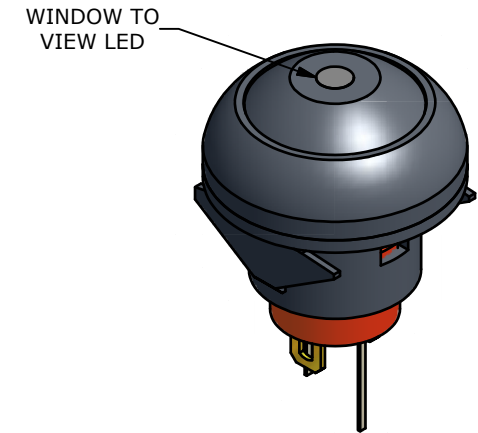
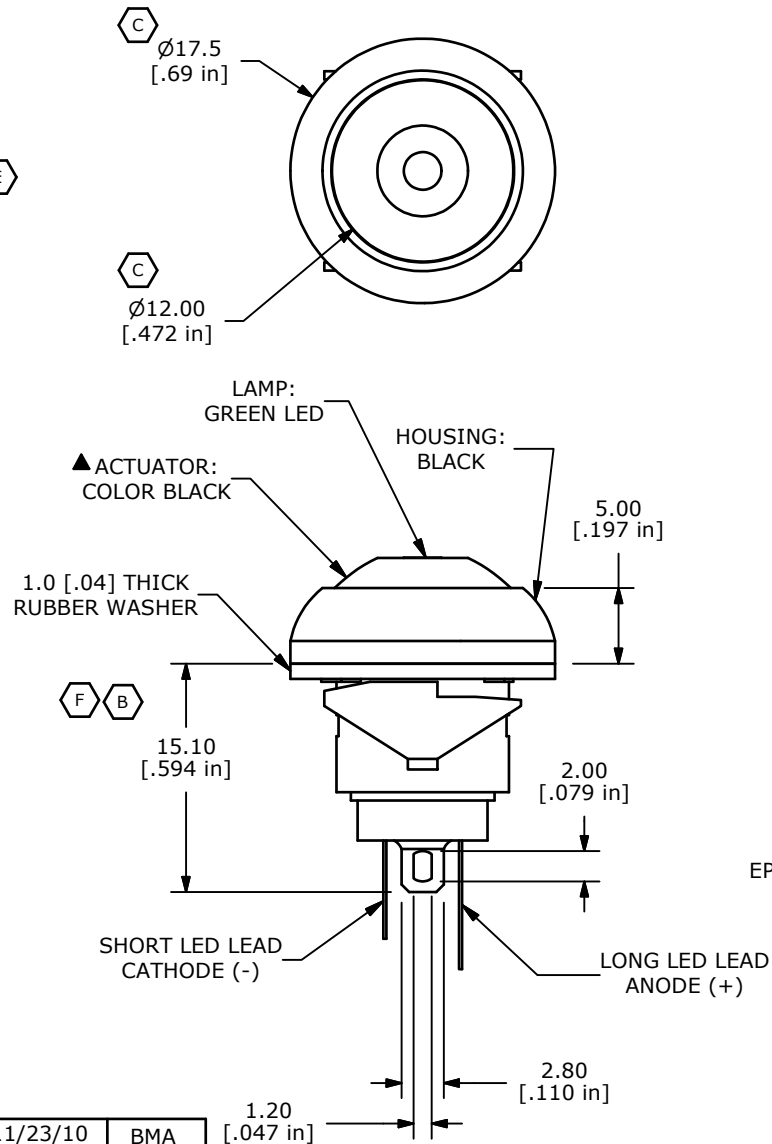


LED SPECIFICATION		
LED PARAMETER	UNITS	GREEN LED
FORWARD CURRENT	mA	20
FORWARD VOLTAGE @ 20mA	V	2.0-2.6
LUMINOUS INTENSITY	mcd	42-80

NOTE:

1. ALL DIMENSIONS IN MM [INCH]
2. GENERAL TOLERANCE: X.X=±0.4
X.XX=±0.25
3. TERMINAL NUMBERS FOR REF ONLY
4. CIRCUIT: SPST OFF-MOMENTARY ON
5. CONTACT MATERIAL: Gold over SILVER
- ▲ 6. RATING: 125mA @ 125 VAC
100mA @ 50 VDC
7. ELECTRIC LIFE: 500,000 CYCLES AT FULL LOAD
8. CONTACT RESISTANCE: 50 milli-OHM max. (INITIAL)
9. INSULATION RESISTANCE: 1,000 MEGA-OHM min.
@ 500VDC.
10. DIELECTRIC STRENGTH: 1,000 VAC rms.
11. OPERATING FORCE: 300 gf +/- 100 gf
12. OPERATING TEMPERATURE: -30°C TO +85°C.
13. CONTACT BOUNCE: 10ms MAX.
- ▲ 14. TRAVEL: 1.5mm
15. PANEL THICKNESS RANGE: 0.8 - 1.8 mm
16. ▲ DENOTES CRITICAL PARAMETER.
17. 2002/95/EC (ROHS) COMPLIANT
- ▲ 18. HARDWARE INCLUDED:
1. T081100 RUBBER SEAL (1)
- ▲ 19. SEAL RATING: IP65



F	19467	CORRECT DIM / DRAWING CLEAN-UP	11/23/10	BMA
E	19358	MISC. DRAWING UPDATES	10/25/10	BMA
D	18410	ORIENT ANODE TO FLAT	2/20/09	BLR
C	18363	CHANGE 2 DIMS	12/22/08	BLR
B	18349	CHANGE 4 DIMS	12/12/08	BLR
A	17973	RELEASE FOR PRODUCTION	2/19/08	BLR
REV	PCR NO	DESCRIPTION	DATE	BY

THE INFORMATION CONTAINED IN THIS DOCUMENT IS PROPRIETARY TO E-SWITCH AND IS NOT TO BE COPIED OR TRANSFERRED



E-SWITCH®



TITLE RP8100B1M1CEBLKBLKGRN

SCALE 2 : 1

DATE 2/20/2009

DR BLR

DWG ST081026

REV F