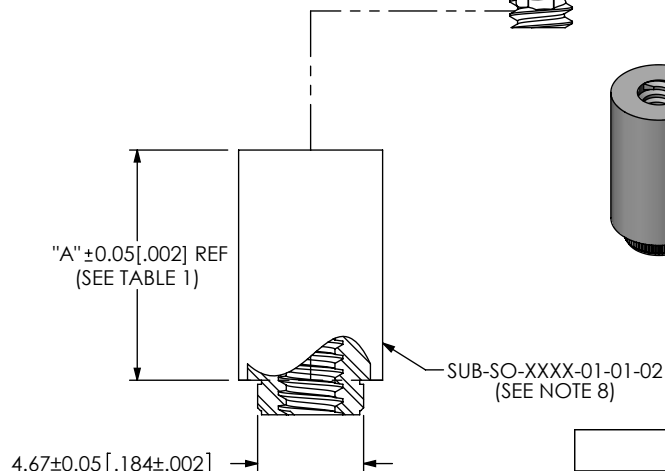
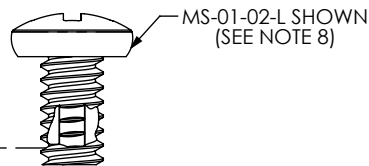
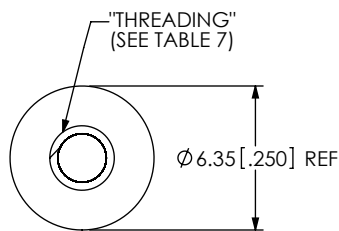


DO NOT
SCALE FROM
THIS PRINTDESIGNED & DIMENSIONED
IN MILLIMETERS[INCHES]

-01 LEAD STYLE

FIG 1
SO-XXXX-01-01-02-L SHOWN

NOTES:

1. DELETED
2. DELETED
3. DELETED
4. STANDOFFS TO BE USED WITH 1.57[.062] MIN THICK BOARDS.
5. PARTS TO BE PACKAGED IN BAGS.
6. -01 LEAD STYLE ONLY AVAILABLE FOR BOARD STACK HEIGHTS -0515 THRU -0965.
7. -02 LEAD STYLE ONLY AVAILABLE FOR TOOLED BOARD STACK HEIGHTS, SEE TABLE 3, SHT 2 FOR TOOLED STACKS.
8. COMPONENTS ARE TO BE PACKAGED IN SEPARATE BAGS UNASSEMBLED.
9. -04 LEAD STYLE ONLY AVAILABLE FOR BOARD STACK HEIGHT -0165 AND -0318.
10. -03 LEAD STYLE ONLY AVAILABLE FOR TOOLED BOARD STACK HEIGHTS, SEE TABLE 4, SHT 3. FOR TOOLED HEIGHTS.
11. ONLY AVAILABLE FOR HDR APPLICATIONS.
12. REPRESENTS A CRITICAL DIMENSION.
13. STANDOFFS ARE DESIGNED .15MM LONGER THAN CONNECTOR STACK HEIGHTS TO ALLOW FOR PROCESSING VARIABLES.
14. TORQUE TO 2.5 - 3.5 IN*LB'S TO SECURE FASTENER IN A STATIC ENVIRONMENT ASSUMING RECOMMENDED BOARD TO BOARD DISTANCES ARE ACHIEVED WITHOUT DAMAGE TO THE PCB, HARDWARE OR OTHER COMPONENTS.

BOARD STACK HEIGHT

-0515,-0715,-0815,-0865,-0915,-0965,
-1015,-1115,-1215,-1315,-1415,-1515,
-1524,-1615,-1715,-1890,-1915,-2015,
-2200,-2215,-2515,-3015
-0165,-0318 (SEE NOTE 9)

LEAD STYLE

- 01: FEMALE THREAD/PRESS-IN
(SEE FIG. 1, SHT. 1)
SEE NOTE 6
- 02: MALE/MALE THREADED
(SEE FIG 2, SHT. 2)
SEE NOTE 7
- 03: MALE/FEMALE THREADED
(SEE FIG. 3, SHT. 3)
SEE NOTE 10
- 04: FEMALE/PRESS-IN
(SEE FIG. 4, SHT. 4)
SEE NOTE 9 & 11
- 05: FEMALE/FEMALE
THREADED
(SEE FIG. 5 SHT. 5)
- 06: MALE/MALE THREADED
(SEE FIG 6, SHT. 6)

SO-XXXX-XX-XX-XX-X-X

KIT OPTION

-N: NO HARDWARE
(STANDOFF ONLY; SEE TABLE 2)
LEAVE BLANK FOR KIT

LOCKING OPTION

-L: LOCKING COMPOUND
(NOT AVAILABLE WITH -N OPTION ON -01, -04
OR -05 LEAD STYLES)

MATERIAL

-01: 6061 ALUMINUM
-02: 303 STAINLESS STEEL

THREADING

-01: #4-40
-02: M3 x 0.5
-03: M2 x 0.4

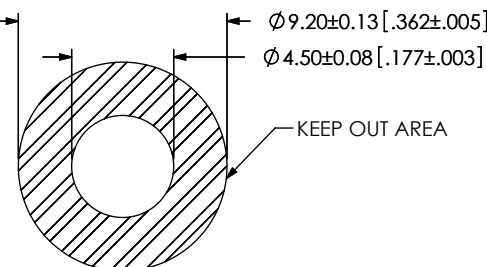
RECOMMENDED BOARD
CUTOUT (PRESS-IN)

TABLE 2 - BOM

| FINISHED GOOD | STANDOFF | QTY | SCREW | QTY | NUT | QTY |
|----------------------|------------------------|-----|------------|-----|----------|-----|
| SO-XXXX-01-01-XX | SUB-SO-XXXX-01-01-XX | 1 | MS-01-XX | 1 | N/A | |
| SO-XXXX-01-01-XX-N | SUB-SO-XXXX-01-01-XX | 1 | N/A | | N/A | |
| SO-XXXX-01-01-XX-L | SUB-SO-XXXX-01-01-XX | 1 | MS-01-XX-L | 1 | N/A | |
| SO-XXXX-02-01-XX | SUB-SO-XXXX-02-01-XX | 1 | N/A | | SN-01-02 | 2 |
| SO-XXXX-02-01-XX-N | SUB-SO-XXXX-02-01-XX | 1 | N/A | | N/A | |
| SO-XXXX-02-01-XX-L | SUB-SO-XXXX-02-01-XX-L | 1 | N/A | | SN-01-02 | 2 |
| SO-XXXX-02-01-XX-L-N | SUB-SO-XXXX-02-01-XX-L | 1 | N/A | | N/A | |
| SO-XXXX-03-01-XX | SUB-SO-XXXX-03-01-XX | 1 | MS-01-XX | 1 | SN-01-02 | 1 |
| SO-XXXX-03-01-XX-N | SUB-SO-XXXX-03-01-XX | 1 | N/A | | N/A | |
| SO-XXXX-03-01-XX-L | SUB-SO-XXXX-03-01-XX-L | 1 | MS-01-XX-L | 1 | SN-01-02 | 1 |
| SO-XXXX-03-01-XX-L-N | SUB-SO-XXXX-03-01-XX-L | 1 | N/A | | N/A | |
| SO-XXXX-05-01-XX | SUB-SO-XXXX-05-01-XX | 1 | MS-01-XX | 2 | N/A | |
| SO-XXXX-05-01-XX-N | SUB-SO-XXXX-05-01-XX | 1 | N/A | | N/A | |
| SO-XXXX-05-01-XX-L | SUB-SO-XXXX-05-01-XX | 1 | MS-01-XX-L | 2 | N/A | |
| SO-XXXX-01-02-XX | SUB-SO-XXXX-01-02-XX | 1 | MS-02-XX | 1 | N/A | |
| SO-XXXX-01-02-XX-N | SUB-SO-XXXX-01-02-XX | 1 | N/A | | N/A | |
| SO-XXXX-01-02-XX-L | SUB-SO-XXXX-01-02-XX | 1 | MS-02-XX-L | 1 | N/A | |
| SO-XXXX-02-02-XX | SUB-SO-XXXX-02-02-XX | 1 | N/A | | SN-02-02 | 2 |
| SO-XXXX-02-02-XX-N | SUB-SO-XXXX-02-02-XX | 1 | N/A | | N/A | |
| SO-XXXX-02-02-XX-L | SUB-SO-XXXX-02-02-XX-L | 1 | N/A | | SN-02-02 | 2 |
| SO-XXXX-02-02-XX-L-N | SUB-SO-XXXX-02-02-XX-L | 1 | N/A | | N/A | |
| SO-XXXX-03-02-XX | SUB-SO-XXXX-03-02-XX | 1 | MS-02-XX | 1 | SN-02-02 | 1 |
| SO-XXXX-03-02-XX-N | SUB-SO-XXXX-03-02-XX | 1 | N/A | | N/A | |
| SO-XXXX-03-02-XX-L | SUB-SO-XXXX-03-02-XX-L | 1 | MS-02-XX-L | 1 | SN-02-02 | 1 |
| SO-XXXX-03-02-XX-L-N | SUB-SO-XXXX-03-02-XX-L | 1 | N/A | | N/A | |
| SO-XXXX-05-02-XX | SUB-SO-XXXX-05-02-XX | 1 | MS-02-XX | 2 | N/A | |
| SO-XXXX-05-02-XX-N | SUB-SO-XXXX-05-02-XX | 1 | N/A | | N/A | |
| SO-XXXX-05-02-XX-L | SUB-SO-XXXX-05-02-XX | 1 | MS-02-XX-L | 2 | N/A | |
| SO-XXXX-05-03-XX | SUB-SO-XXXX-05-03-XX | 1 | MS-06-XX | 2 | N/A | |
| SO-XXXX-05-03-XX-L | SUB-SO-XXXX-05-03-XX | 1 | MS-06-XX-L | 2 | N/A | |

TABLE 7

| STYLE | THREADING |
|-------|------------------------------|
| -01 | #4-40 UNC 2A #4-40 UNC 2B |
| -02 | M3 x 0.5 6g M3 x 0.5 6H |
| -03 | M2 x 0.4 6g M2 x 0.4 6H |

TABLE 1

01 LEAD STYLE AVAILABILITY

| BOARD STACK HEIGHT | "A" |
|-----------------------|------------|
| -0515 | 5.15[.203] |
| -0715 | 7.15[.282] |
| -0815 | 8.15[.321] |
| -0865 | 8.65[.341] |
| -0915 | 9.15[.360] |
| -0965 | 9.65[.380] |

UNLESS OTHERWISE SPECIFIED,
DIMENSIONS ARE IN MILLIMETERS
TOLERANCES ARE:

DECIMALS ANGLES
X.X: ±0.25 [.01]
X.XX: ±0.05 [.002]

PROPRIETARY NOTE

THIS DOCUMENT CONTAINS INFORMATION
CONFIDENTIAL AND PROPRIETARY TO
SAMTEC, INC. AND SHALL NOT BE REPRODUCED
OR TRANSFERRED TO OTHER DOCUMENTS OR
DISCLOSED TO OTHERS OR USED FOR ANY
PURPOSE OTHER THAN THAT WHICH IT WAS
OBTAINED WITHOUT THE EXPRESSED WRITTEN
CONSENT OF SAMTEC, INC.

MATERIAL: DO NOT SCALE DRAWING SHEET SCALE: 1:0.333333
SEE PART CALL OUT FOR MATERIAL

samtec

520 PARK EAST BLVD, NEW ALBANY, IN 47150
PHONE: 812-944-6733 FAX: 812-948-5047
e-Mail: info@SAMTEC.com code 55322

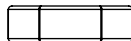
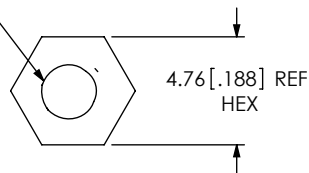
DESCRIPTION:
BOARD TO BOARD STANDOFF

DWG. NO.
SO-XXXX-XX-XX-XX-X

BY: T.NEWTON 12/6/2007 SHEET 1 OF 6

"THREADING"
(SEE TABLE 7)

-02 LEAD STYLE



SHOWN WITHOUT LOCKING
OPTION
(NOT CATALOG STANDARD)

"B" ±0.05 [.002] REF
(SEE TABLE 3)

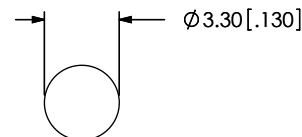
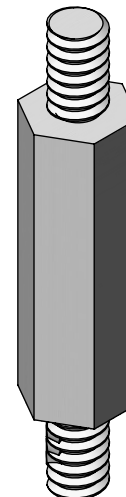
SUB-SO-XXXX-02-01-02-X
(SEE NOTE 8)

4.76 [.188] REF

SHOWN WITH LOCKING
OPTION

SN-01-02 SHOWN
(SEE NOTE 8)

FIG 2
SO-XXXX-02-01-02-X SHOWN



RECOMMENDED BOARD
CUTOUT (#4-40)

TABLE 3

02 LEAD STYLE
AVAILABILITY

| BOARD STACK HEIGHT | "B" |
|--------------------------|---------------|
| -0515 | 5.15 [.203] |
| -0715 | 7.15 [.282] |
| -0865 | 8.65 [.341] |
| -1015 | 10.15 [.400] |
| -1115 | 11.15 [.439] |
| -1215 | 12.15 [.478] |
| -1315 | 13.15 [.518] |
| -1415 | 14.15 [.557] |
| -1515 | 15.15 [.597] |
| -1524 | 15.24 [.600] |
| -1615 | 16.15 [.636] |
| -1715 | 17.15 [.675] |
| -1890 | 18.90 [.744] |
| -1915 | 19.15 [.754] |
| -2015 | 20.15 [.793] |
| -2215 | 22.15 [.872] |
| -2515 | 25.15 [.990] |
| -3015 | 30.15 [1.187] |

PROPRIETARY NOTE

THIS DOCUMENT CONTAINS INFORMATION
CONFIDENTIAL AND PROPRIETARY TO
SAMTEC, INC. AND SHALL NOT BE REPRODUCED
OR TRANSFERRED TO OTHER DOCUMENTS OR
DISCLOSED TO OTHERS OR USED FOR ANY
PURPOSE OTHER THAN THAT WHICH IT WAS
OBTAINED WITHOUT THE EXPRESSED WRITTEN
CONSENT OF SAMTEC, INC.

DO NOT SCALE DRAWING

SHEET SCALE: 1:0.333333

samtec

520 PARK EAST BLVD, NEW ALBANY, IN 47150
PHONE: 812-944-6733 FAX: 812-948-5047
e-Mail: info@SAMTEC.com code 55322

DESCRIPTION: BOARD TO BOARD STANDOFF

DWG. NO. SO-XXXX-XX-XX-XX-X

BY: T.NEWTON 12/6/2007 SHEET 2 OF 6

-03 LEAD STYLE

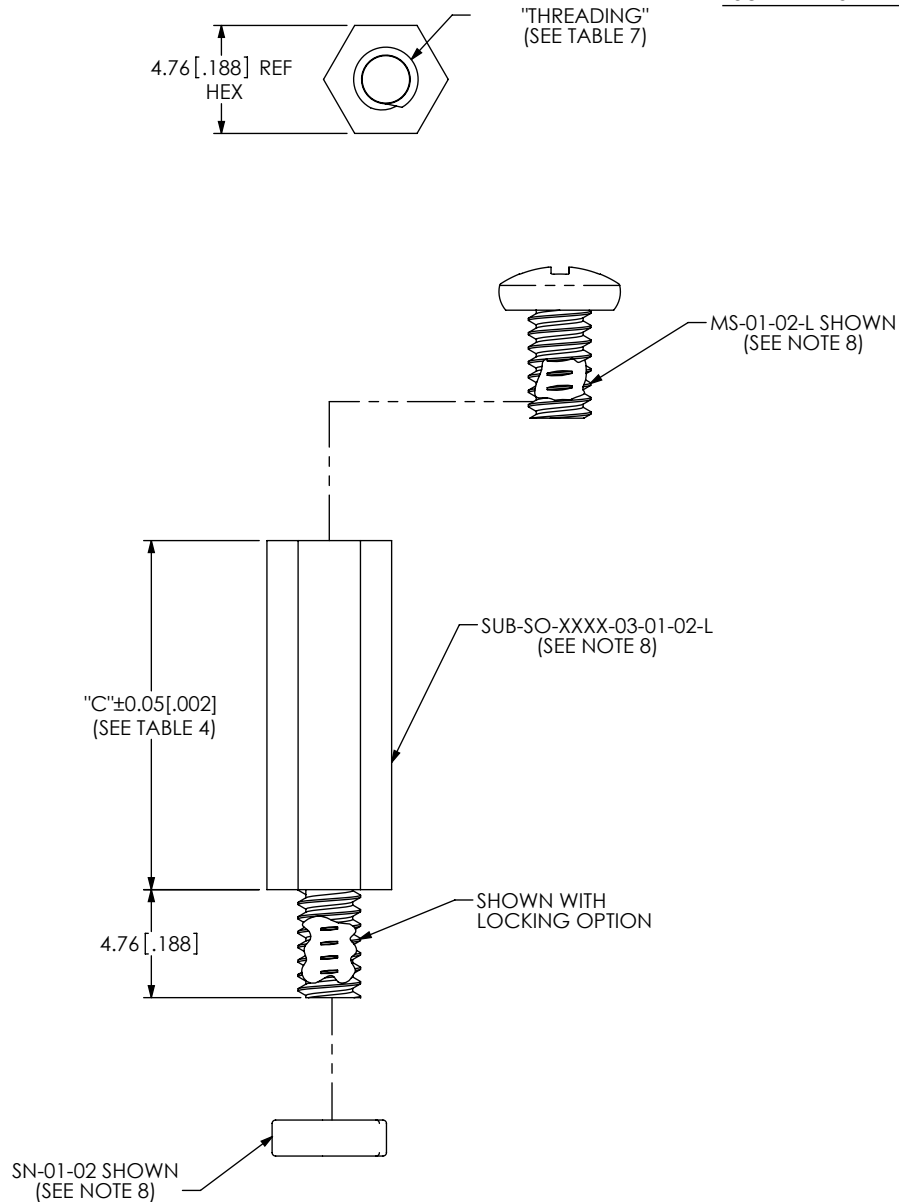
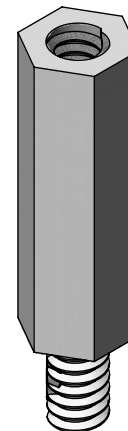


FIG 3
SO-XXXX-03-01-02-X SHOWN
(SAME AS -02 LEAD STYLE,
EXCEPT WHERE STATED)

| TABLE 4 | |
|-------------------------------|---------------|
| 03 LEAD STYLE AVAILABILITY | |
| BOARD STACK HEIGHT | "C" |
| -0815 | 8.15 [.321] |
| -0865 | 8.65 [.341] |
| -0915 | 9.15 [.360] |
| -0965 | 9.65 [.380] |
| -1015 | 10.15 [.400] |
| -1115 | 11.15 [.439] |
| -1215 | 12.15 [.478] |
| -1315 | 13.15 [.518] |
| -1415 | 14.15 [.557] |
| -1515 | 15.15 [.597] |
| -1524 | 15.24 [.600] |
| -1615 | 16.15 [.636] |
| -1715 | 17.15 [.675] |
| -1890 | 18.90 [.744] |
| -1915 | 19.15 [.754] |
| -2015 | 20.15 [.793] |
| -2200 | 22.00 [.866] |
| -2215 | 22.15 [.872] |
| -2515 | 25.15 [.990] |
| -3015 | 30.15 [1.187] |



| | | |
|---|---|--------------------------------------|
| <p>PROPRIETARY NOTE THIS DOCUMENT CONTAINS INFORMATION CONFIDENTIAL AND PROPRIETARY TO SAMTEC, INC. AND SHALL NOT BE REPRODUCED OR TRANSFERRED TO OTHER DOCUMENTS OR DISCLOSED TO OTHERS OR USED FOR ANY PURPOSE OTHER THAN THAT WHICH IT WAS OBTAINED WITHOUT THE EXPRESSED WRITTEN CONSENT OF SAMTEC, INC.</p> | <p>samtec</p> <p>520 PARK EAST BLVD, NEW ALBANY, IN 47150 PHONE: 812-944-6733 FAX: 812-948-5047 e-Mail: info@SAMTEC.com code 55322</p> | |
| | DO NOT SCALE DRAWING | DESCRIPTION: BOARD TO BOARD STANDOFF |
| | SHEET SCALE: 3:1 | DWG. NO. SO-XXXX-XX-XX-XX-X |
| | BY: T.NEWTON 12/6/2007 | SHEET 3 OF 6 |

-04 LEAD STYLE

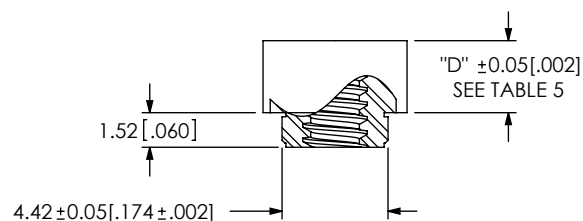
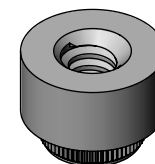
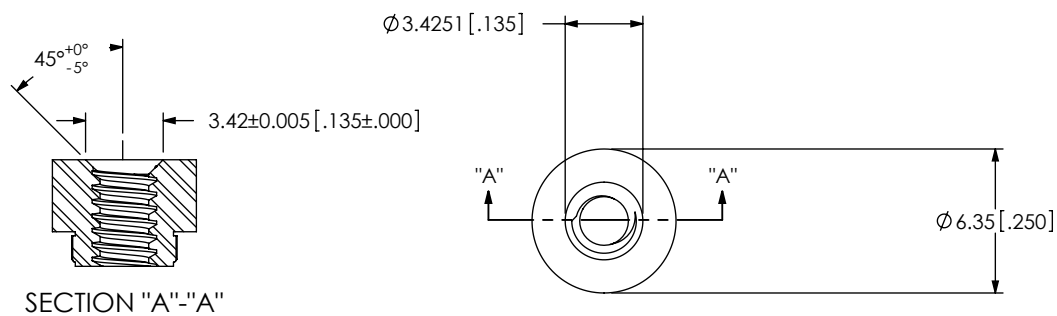
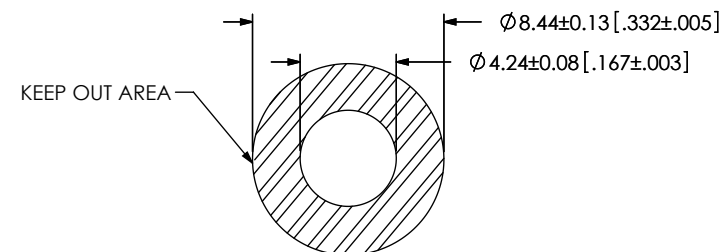



FIG 4
SO-XXXX-04-01-02 SHOWN



RECOMMENDED BOARD
CUTOUT (PRESS-IN)

| TABLE 5 | |
|-------------------------------|-------------|
| 04 LEAD STYLE AVAILABILITY | |
| BOARD STACK HEIGHT | "D" |
| -0318 | 3.18 [.125] |
| -0165 | 1.65 [.065] |

| | | |
|--|--|--------------------------------------|
| PROPRIETARY NOTE THIS DOCUMENT CONTAINS INFORMATION CONFIDENTIAL AND PROPRIETARY TO SAMTEC, INC. AND SHALL NOT BE REPRODUCED OR TRANSFERRED TO OTHER DOCUMENTS OR DISCLOSED TO OTHERS OR USED FOR ANY PURPOSE OTHER THAN THAT WHICH IT WAS OBTAINED WITHOUT THE EXPRESSED WRITTEN CONSENT OF SAMTEC, INC. |  | |
| | 520 PARK EAST BLVD, NEW ALBANY, IN 47150 PHONE: 812-944-6733 FAX: 812-948-5047 e-Mail info@SAMTEC.com code 55322 | |
| | DO NOT SCALE DRAWING | DESCRIPTION: BOARD TO BOARD STANDOFF |
| | SHEET SCALE: 1:0.333333 | DWG. NO. SO-XXXX-XX-XX-XX-X |
| BY: T.NEWTON 12/6/2007 | | SHEET 4 OF 6 |

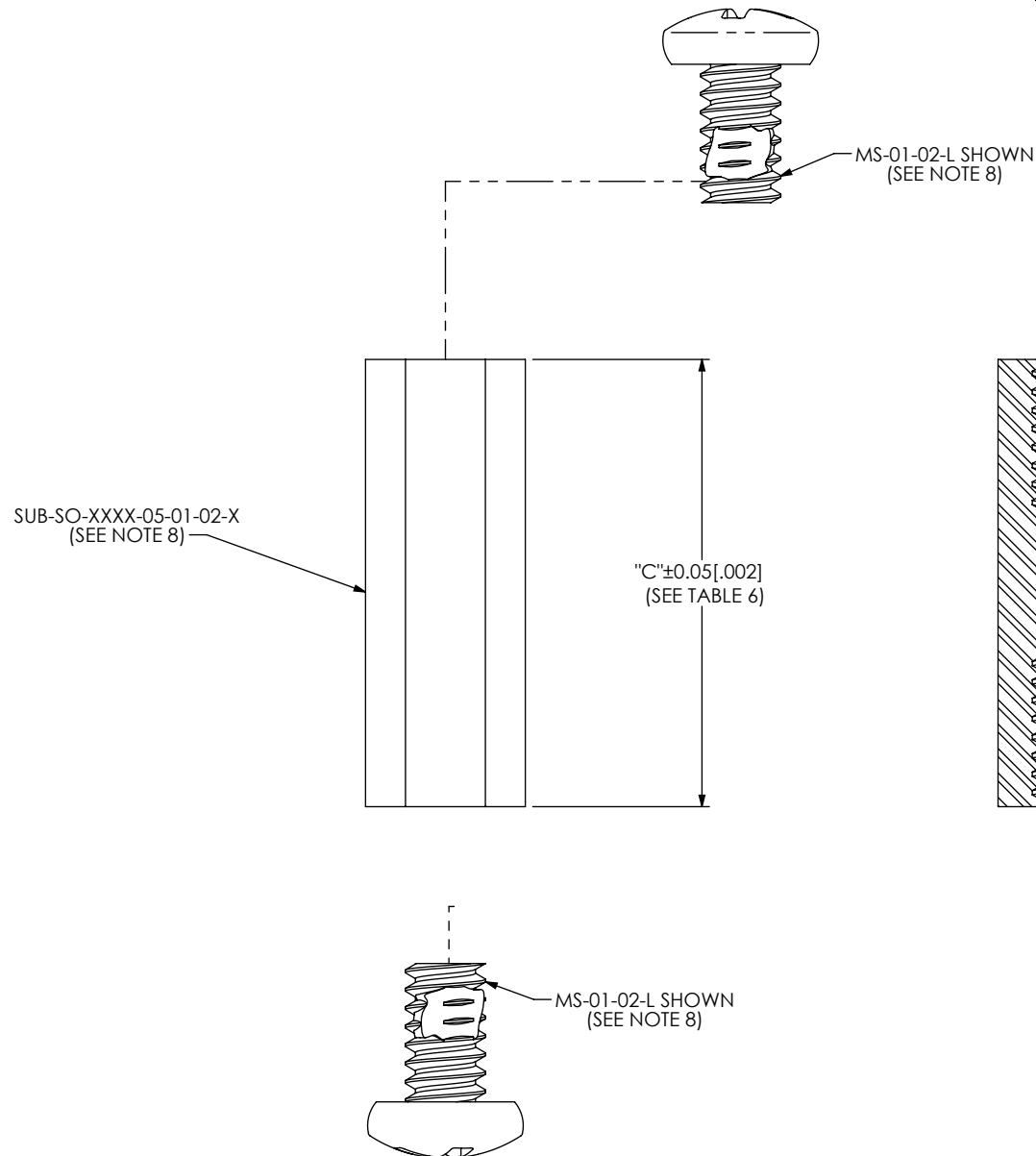
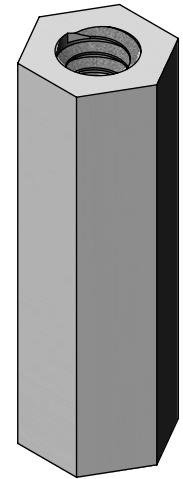
-05 LEAD STYLE

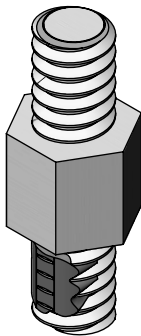
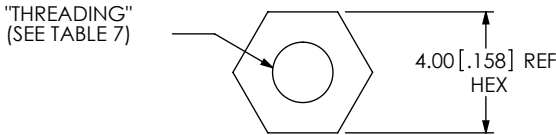
FIG 5
SO-XXXX-05-01-02-X SHOWN
(SAME AS -02 LEAD STYLE,
EXCEPT WHERE STATED)

| TABLE 6 | |
|-------------------------------|-------------|
| 05 LEAD STYLE AVAILABILITY | |
| BOARD STACK HEIGHT | "C" |
| -0515 | 5.15[.002] |
| -0915 | 9.15[.004] |
| -1015 | 10.15[.400] |
| -1115 | 11.15[.440] |
| -1215 | 12.15[.492] |
| -1315 | 13.15[.518] |
| -1415 | 14.15[.557] |
| -1515 | 15.15[.597] |
| -1524 | 15.24[.600] |
| -1615 | 16.15[.636] |
| -1715 | 17.15[.675] |
| -1890 | 18.90[.744] |
| -1915 | 19.15[.754] |
| -2015 | 20.15[.793] |
| -2200 | 22.00[.866] |
| -2215 | 22.15[.872] |
| -2515 | 25.15[.990] |

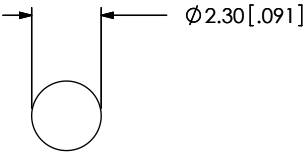
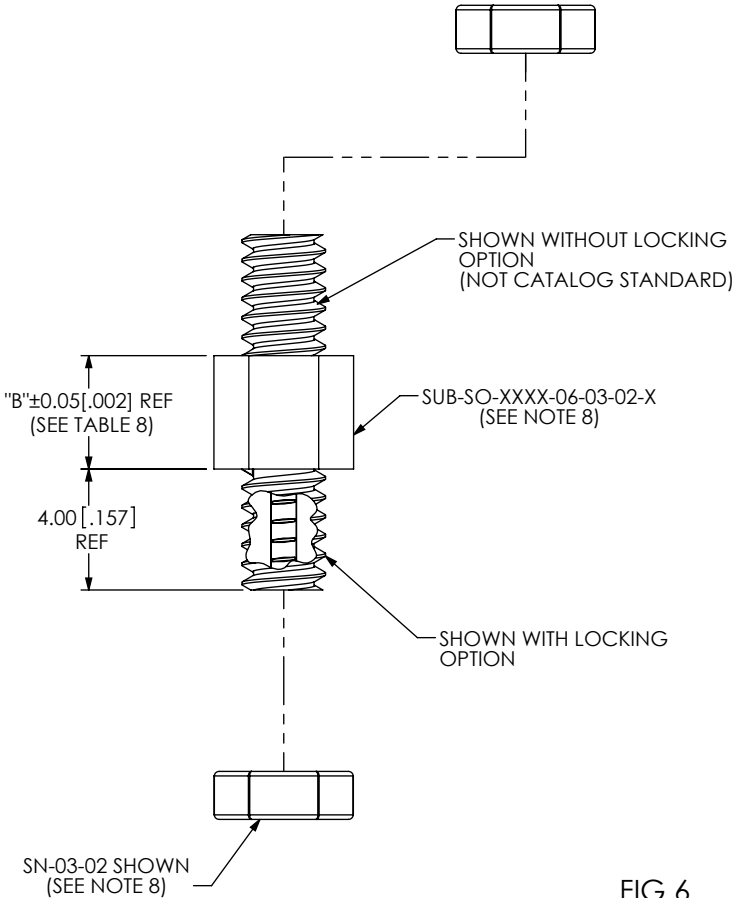


| | |
|--|--|
| PROPRIETARY NOTE THIS DOCUMENT CONTAINS INFORMATION CONFIDENTIAL AND PROPRIETARY TO SAMTEC, INC. AND SHALL NOT BE REPRODUCED OR TRANSFERRED TO OTHER DOCUMENTS OR DISCLOSED TO OTHERS OR USED FOR ANY PURPOSE OTHER THAN THAT WHICH IT WAS OBTAINED WITHOUT THE EXPRESSED WRITTEN CONSENT OF SAMTEC, INC. | |
| DO NOT SCALE DRAWING | |
| SHEET SCALE: 1:1 | |
| DESCRIPTION: BOARD TO BOARD STANDOFF | |
| DWG. NO. SO-XXXX-XX-XX-XX-X | |
| BY: T.NEWTON 12/6/2007 | |
| SHEET 5 OF 6 | |

-06 LEAD STYLE




| TABLE 8 | |
|-------------------------------|------------|
| 06 LEAD STYLE AVAILABILITY | |
| BOARD STACK HEIGHT | "B" |
| -0375 | 3.75[.148] |



RECOMMENDED BOARD
CUTOUT (M2 x 0.4)

FIG 6
SO-XXXX-06-03-02-X SHOWN
(SAME AS -02 LEAD STYLE,
EXCEPT WHERE STATED)

| | | |
|----------------------|--|-------------------------------------|
| DO NOT SCALE DRAWING | PROPRIETARY NOTE THIS DOCUMENT CONTAINS INFORMATION CONFIDENTIAL AND PROPRIETARY TO SAMTEC, INC. AND SHALL NOT BE REPRODUCED OR TRANSFERRED TO OTHER DOCUMENTS OR DISCLOSED TO OTHERS OR USED FOR ANY PURPOSE OTHER THAN THAT WHICH IT WAS OBTAINED WITHOUT THE EXPRESSED WRITTEN CONSENT OF SAMTEC, INC. | |
| |  520 PARK EAST BLVD, NEW ALBANY, IN 47150 PHONE: 812-944-6733 FAX: 812-948-5047 e-Mail info@SAMTEC.com code 55322 | |
| | DESCRIPTION: | BOARD TO BOARD STANDOFF |
| | DWG. NO. | SO-XXXX-XX-XX-XX-X |
| SHEET SCALE: 4:1 | | BY: T.NEWTON 12/6/2007 SHEET 6 OF 6 |