



Powerful Processors – Easy to Use™

# SKP8CMini

---

# User's Manual

Rev. 1.2  
January 2004

# Table of Contents

1.0 Introduction .....	3
2.0 Kit Contents.....	4
3.0 Limited Guarantee and Support.....	5
4.0 System Connectivity .....	6
4.1 Host Computer Requirements .....	6
4.2 Mini R8C Board .....	5
4.3 ICD Board .....	6
4.4 Development Tools .....	6
4.4.1 HEW.....	6
4.4.2 NC30 C-Compiler/Assembler/Linker .....	7
4.4.3 KD30 Debugger.....	7
4.4.4 FoUSB (Flash-over-USB™) Programmer .....	7
5.0 Hardware.....	8
5.1 Mini R8C Board .....	8
5.1.1 R8C/Tiny Series of Microcontrollers .....	9
5.1.2 Block Diagram .....	9
5.1.3 External Battery Points .....	10
5.1.4 External Power Supply Points .....	10
6.0 System Operation & Limitations .....	11
6.1 Kernel (ROM Monitor) Introduction .....	11
6.2 Pin Usage Limitations.....	11
6.3 Memory Map .....	11
6.4 Status After Reset .....	12
6.5 Register Operation Limitations .....	12
6.6 Limitations on Interrupts .....	12
6.7 Stop Mode or Wait Mode Limitations .....	13
6.8 User Program's Real-Time Capability.....	13
6.9 Performing Debug Using Symbols.....	13
7.0 Mini R8C Board Specifications .....	14
7.1 Hardware Specifications.....	14
7.2 Operating Environment.....	14
Appendix A. Troubleshooting Guide .....	15
A.1 USB Driver Problems .....	15
A.2 KD30 Problems.....	16
A.3 Installing Required Files Manually.....	18
Appendix B. Reference Manuals .....	19
Appendix C. Mini R8C Schematics.....	20
Appendix D. Mini R8C Bill-of-Materials.....	21
Appendix E. J1 & J2 Pin Assignment .....	22
Appendix F. Board Dimensions .....	23
Appendix G. Expansion Circuit.....	24
Appendix H. In-Circuit Debugger .....	25

# 1.0 Introduction

The Mini R8C Starter Kit Plus (SKP) is a compact system to evaluate Renesas software development tools and the R8C microcontrollers (MCU). The kit also includes sample code, documentation, and tutorial to jumpstart development.

The software development tools that come with the kit include the High-performance Embedded Workshop HEW, R8C version of NC30WA C-compiler/Assembler/Linker, KD30 Debugger, and FoUSB (Flash-over-USB™) Programmer.

The KD30 Debugger, together with the In-Circuit Debugger (RTA-FoUSB-MON), provides a real-time, source-level debug environment. The FoUSB Programmer application, with the In-Circuit Debugger (ICD), allows in-system programming of the R8C/11 flash MCU.

The ICD provides a convenient USB (Universal Serial Bus) interface between the Mini R8C board and the PC. This interface reduces resource requirements on the R8C/11 MCU, allows faster code downloads and, can also be used to program other Renesas Flash MCUs using Flash-over-USB™.

## 2.0 Kit Contents

This section describes the contents of the Mini R8C Starter Kit Plus (SKP) product package. When unpacking your kit, please check to see that all products listed below are included.

### 2.1 Mini R8C Starter Kit Plus (SKP) Product List

Table 2-1 lists the products included in the kit.

**Table 2-1 SKP8CMINI Product List**

Product Name	Qty	Remark
Mini R8C Board	1	R8C target board
In-Circuit Debugger (RTA-FoUSB-MON)	1	KD30 Debugger/ FoUSB Programmer Interface Board
6' Mini USB Cable	1	ICD to PC
CD ROM	1	Auto-install program HEW3 Embedded Workshop NC30WA Compiler/Assembler KD30 Debugger FoUSB Programmer Manuals Sample programs

#### 2.1.1 CD-ROM

The CD-ROM contains the electronic manuals and software necessary for developing programs. Your computer must have Netscape Navigator® or Microsoft®'s Internet Explorer to view the help files and Acrobat Reader to view the manuals.

Insert the enclosed CD into your computer and SKP installer will auto-start. The SKP installer program will create a C:\MTOOL and C:\MTOOL\SKP8CMINI folder on your machine. Development tools can be found under C:\MTOOL (NC30WA Compiler, KD30 Debugger, and FoUSB Programmer) or C:\Hew3 (HEW High-performance Embedded Workshop). Documentation, sample code, and other SKP related files could be found under the C:\MTOOL\SKP8CMINI folder.

If the SKP installer program does not start up, browse the CD's root folder and double-click on '**skp\_installer.exe**' to start installation. If you continue having problems on the install, please read the '**Install FAQ.txt**' file on the root folder of the CD.

## 3.0 Limited Guarantee and Support

Renesas Technology America, Inc., warrants the Mini R8C Starter Kit Plus (SKP8CMINI) to be free from component or assembly defect for a period of 180 days from the date of purchase. Settlement is limited to repair or replacement of the product only. Renesas Technology America, Inc., does not assume any liability arising out of the application or use of any product, circuit or procedure described herein. No other liability or warranty apply, expressed or implied. Software warranty is limited to replacement of the CD only. While every attempt has been made to ensure accurate documentation, Renesas Technology America, Inc., cannot be held responsible for error or omissions and reserves the right to make changes without further notice.

“Flash-Over-USB” is a trademark of Renesas Technology America, Inc. All trademarks are the property of their respective owners.

## 4.0 System Connectivity

The following lists the hardware and software products required for using the Mini R8C Starter Kit Plus (SKP8CMINI).

- Host Computer with available USB port (supplied by user)
- Mini R8C Board
- In-Circuit Debugger (RTA-FoUSB-MON)
- Mini USB Cable
- Software Tools (HEW3, NC30 Compiler, KD30 Debugger, FoUSB Programmer)

Figure 4-1 shows the system connectivity for the Mini R8C SKP.



**Figure 4-1 Mini R8C SKP Connectivity**

### 4.1 Host Computer Requirements

The minimum requirement to be able to use the software that comes with the kit is a PC with an available USB port and Microsoft Windows 98, ME, 2000, or XP operating system.

### 4.2 Mini R8C Board

The Mini R8C board provides a compact evaluation and development environment for the R8C/Tiny series of MCU. It has two switches (pushbutton and slide) and LED's for user interface. It also has a CdS cell and thermistor on board.

### 4.3 In-Circuit Debugger

The ICD provides a plug-and-play debugging and programming interface to the Mini R8C board by using the host computer's Universal Serial Bus (USB). The USB port also provides power to the Mini R8C board and ICD thereby eliminating the need for an external power supply.

#### NOTE:

*The ICD can be used to connect to other boards (i.e. customer target boards) with an R8C or M16C Flash MCU. For details, please see ICD User's Manual included with the kit (Start > All Programs > RENESAS-TOOLS > SKP8CSKP > Document Descriptions).*

### 4.4 Development Tools

Aside from SKP documentation and sample code, the SKP installer program also installs the development tools. Please see the quick start guide on how to run the SKP installer.

#### 4.4.1 HEW

The High-performance Embedded Workshop (HEW) provides an Integrated Development Environment (IDE) and Graphical User Interface (GUI) that integrates the software development tools and provides project management features.

#### **4.4.2 NC30 C-Compiler/Assembler/Linker**

The kit is supplied with a special R8C version of Renesas' NC30WA C-compiler. NC30WA generates debug information files from C language and the assembly language source files. NC30WA limitations include:

- No support or warranty.
- Total program ROM size less than 64 Kbytes.

Please see the M3T-NC30WA V.5.20 Release 1 Release Note (R8C/Tiny only version) for complete specification limitations.

#### **4.4.3 KD30 Debugger**

KD30 is a remote debugger that runs on the host PC. While communicating with the monitor program, the debugger provides a highly efficient evaluation environment. KD30 features include:

- Source-line debug for assembly language, structured assembly language, C language
- Run command with 2 breakpoints
- RAM monitor function
- C variable "watch" window

#### **4.4.4 FoUSB (Flash-over-USB™) Programmer**

User programs can run on the Mini R8C board without the host computer running KD30 by programming the on-board R8C/11 flash MCU with firmware using FoUSB Programmer software and ICD. It can also be used to program other Renesas R8C and M16C Flash MCU's.

# 5.0 Hardware

## 5.1 Mini R8C Board

Figure 5-1 shows the Mini R8C Board with major components identified.

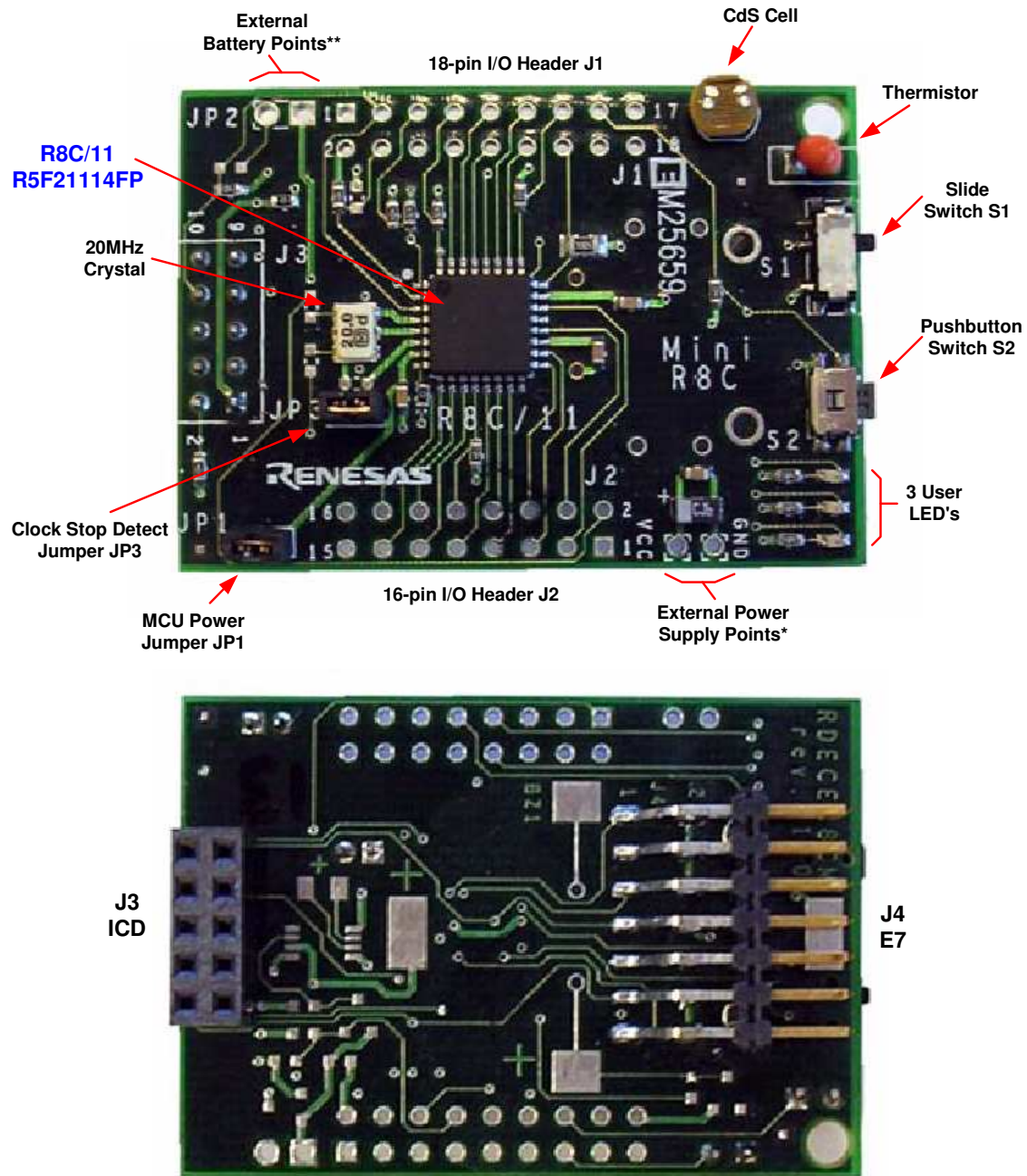


Figure 5-1. Mini R8C Board



Note:

\* Connect an external power supply to these points to power the board when not using the ICD.

\*\* Use this jumper (JP2) when connecting batteries or an external supply to power to the add-on on-board voltage regulator. The bottom side of the board can be populated with a voltage regulator circuit and battery holder for stand-alone operation. See Appendix G for more information.

### 5.1.1 R8C/Tiny Series of Microcontrollers

The R8C/Tiny Series of 16-bit single-chip, flash microcontroller (MCU) is available in several configurations of peripheral functions and features. A Hardware Manual for the R8C/11 group of microcontrollers can be found on the C:\MTOOL\SKP8CMINI\Docs folder of your PC under the filename 'r8c11\_hardware\_manual.pdf' after SKP software installation or from the Start menu (Start > All Programs > RENESAS-TOOLS > SKP8CMINI > Document Descriptions).

### 5.1.2 Block Diagram

The Mini R8C Board incorporates an R5F21114FP (32 pin LQFP) from the R8C/11 group of microcontrollers. Figure 5-2 shows the Mini R8C Board block diagram.

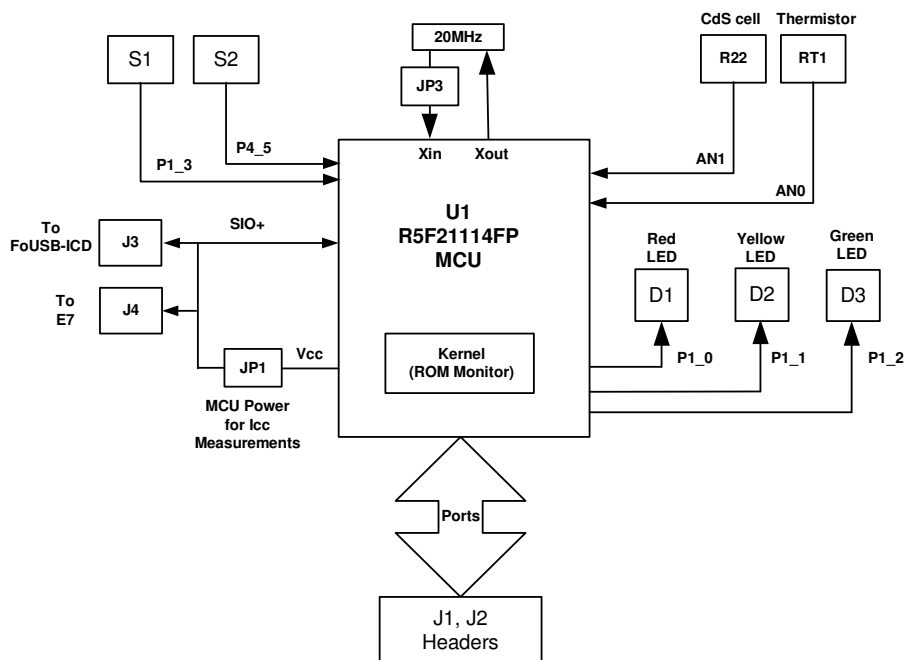


Figure 5-2. Mini R8C Board Block Diagram

### **5.1.3 External Power Supply Points**

The external power supply points can be used to operate the Mini R8C Board without power from the ICD. This is a direct connection with Vcc and Ground on the board. Please see the schematic in Appendix C. An external power supply that can provide 2.7V to 5.5V and 100mA can be used. However, when used with the ICD (in target power mode), 3.3V is the minimum voltage for proper operation.

### **5.1.4 External Battery Points (using on-board voltage regulator circuit)**

An external battery (or power supply) can be connected to JP2 for operation with the voltage regulator circuit. The Mini R8C Board has provisions for a voltage regulator circuit but does not come with this circuit populated. For more information please see the schematic in Appendix C and expansion circuit description in Appendix G.

## 6.0 System Operation & Limitations

The kit provides sophisticated debugging features at a low cost but it does have some limitations when used with KD30 Debugger and ICD. Section 6.1 introduces the ROM monitor program and how it is used. The limitations when this ROM monitor is running with the user program are listed in table 6-1.

**Table 6-1 Systems Limitations During Debug (when used with ICD + KD30)**

Item	Please Refer To
User Limitations	6.2 Pin Usage Limitations
	6.3 Memory Map
	6.4 Status After Reset
	6.5 Register Operation Limitations
	6.6 Limitations on Interrupts
Debugger Limitations	6.7 Stop or Wait Mode Limitations
	6.8 User Program's Real-time Capability

### 6.1 Kernel (ROM Monitor) Introduction

During debug (used with the KD30 debugger), a small program, called a kernel, is downloaded to the R8C/11. The kernel communicates with the KD30 Debugger through the ICD about MCU status during user code debugging operations.

There are no special steps required in the user program to make use of the ICD. The operation of the kernel is transparent to the user but there are some limitations and these are discussed from section 6.2.

After starting KD30, the ICD downloads the kernel to the R8C/11 if it does not exist (e.g. blank device or programmed with FoUSB Programmer). After downloading the kernel, KD30 opens the Program Window and the R8C/11 is ready for downloading code.

Connecting the ICD without starting KD30 will not affect the lines connected between the ICD and the R8C/11 – the ICD keeps the lines in high-impedance state. The ICD only drives the pins after KD30 or FoUSB Programmer is started.

After program debug and verification, you can then create and download a binary, Intel (.hex) or Motorola (.mot), file to the R8C/11. This operation erases the kernel and only leaves the user program.

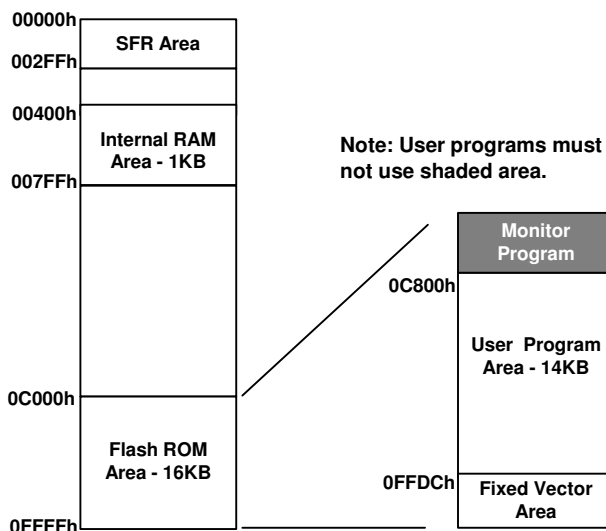
### 6.2 Pin Usage Limitations

SIO/UART1 pins are used for communication between the Mini R8C board kernel and the host computer through the ICD. Do not connect these pins to any other pins. UART1 cannot be used in the user program. For details, please see ICD (RTA-FoUSB-MON) User Manual Section 5, Target M16C ROM Monitor Resources.

### 6.3 Memory Map

Figure 6-2 shows the R5F2114FP memory map. The user memory area includes:

- RAM area – 1K Bytes
- Flash ROM area – 14 KB


**Figure 6-2 R5F21114FP Memory Map**

Note there are no limitations regarding user RAM however, 2k bytes of user Flash ROM are utilized by the kernel.

## 6.4 Status After Reset

Table 6-2 lists the value of the UART1 register initialized by the kernel when the Mini R8C starter board is reset. The register status depends on the MCU's internal operation performed after a reset.

**Table 6-2. Initial Register Values After Reset**

Register Name	Initial Value After Reset
UART1	Set for external clock synchronous mode

## 6.5 Register Operation Limitations

Table 6-3 lists registers with modification limitations. Modifying the contents of these registers are modified may cause the kernel to operate incorrectly.

**Table 6-3. Limitations on Register Operation**

Register Name	Restriction
UART1 Transmit/Receive Mode Register	Do not change
UART1 Transmit/Receive Control Register 0	
UART1 Transmit/Receive Control Register 1	
UART1 Interrupt Control Register 0	Do not change
UART Transmit/Receive Control Register 2	Do not change bits 0 and 2
UART1 Transmit Buffer Register	Do not write to this register
UART1 Receive Buffer Register	Do not read this register

## 6.6 Limitations on Interrupts - Vectors that reside in the Hardware Vector Table

Table 6-4 lists the limitations on hardware interrupt vector addresses.

**Table 6-4. Interrupt Vector Addresses**

Interrupt Cause	R8C/11 Vector Address	Kit Specification
Undefined	0FFDCH ~ 0FFDFH	User available
Overflow	0FFE0H ~ 0FFE3H	User available
BRK Instruction	0FFE4H ~ 0FFE7H	User available
Address Match	0FFE8H ~ 0FFEBH	User inhibited
Single-step	0FFECH ~ 0FFEFH	User inhibited
Watchdog Timer	0FFF0H ~ 0FFF3H	User available
Reserved	0FFF4H ~ 0FFF7H	Reserved
Reserved	0FFF8H ~ 0FFFBH	Reserved
RESET	0FFFCH ~ 0FFFFH	Reset vector (Note 1)

NOTES:

(1) The monitor program transparently relocates the Reset vector to FFFD8H.

## 6.7 Stop or Wait Mode Limitations

To use Stop or Wait modes in the user's program, start the debugger in free-run mode. If you want to debug, close the RAM, C Watch and ASM Watch Windows before actually debugging. Furthermore, set a breakpoint or take other necessary measures when getting out of Stop or Wait mode in order to ensure that no windows operations will be performed until the program stops at the breakpoint.

## 6.8 User Program's Real-Time Capability

Please be aware that, even if the kernel stops the user program (kernel in "STOP" state), the hardware peripherals will continue to run. Therefore, interrupts may not be serviced properly.

While the user program is running (kernel is in "RUN" state), there is no overhead on the application code, UNLESS a RAM monitor window is open in KD30. This window requires periodic communication with the MCU. This communication suspends normal application operation while servicing the request (approximately 2000 BCLK cycles for each 16 bytes of data displayed in the window are used per window update).

## 6.9 Performing Debug Using Symbols

- Normally when a new project is started, debugging symbols are enabled. If you are unable to debug your program using symbols in KD30, add the debug option [-g] before compiling the programs.

For more information, see the HEW user's manual.

# 7.0 Mini R8C Board Specifications

## 7.1 Hardware Specifications

Table 7-1 lists the specifications of the Mini R8C Board.

**Table 7-1. Mini R8C Board Specifications**

Item	Specification
MCU	R5F21114FP
Clocks	Main Clock: 20MHz Crystal
Memory (Internal)	RAM: 1 KB Flash ROM: 16KB (14KB user)
Connector	[J1 & J2]: Expansion connectors [J3]: Debugger interface
Sensors	[R22]: CdS Cell connected to AN1 (P06) [RT1]: Thermistor connected to AN0 (P07)
Jumpers	[JP1]: MCU power – for MCU Icc measurements [JP2]: External battery or power supply connection [JP3]: Oscillation Stop Detect function
Switches	[S1]: Slide switch (connected to P13) [S2]: Pushbutton switch (connected to P45)
LED's	[D1] (Red): User output (connected to P10) [D2] (Yellow): User output (connected to P11) [D3] (Green): User output (connected to P12)

## 7.2 Operating Environment

Table 7-2 lists the environmental conditions for using and storing the Mini R8C board. When storing the board, place it in a conductive bag and then in the packing box your product was shipped in from the factory.

**Table 7-2. Operating Environment**

Environmental Condition	Ambient Temperature	Ambient Humidity
Operating	0 - 55°C (No corrosive gas allowed)	30 to 80% (non-condensing)
Storage	-30 to 75°C (No corrosive gas allowed)	30 to 80% (non-condensing)

# Appendix A. Troubleshooting Guide

This section discusses possible problems you may encounter while installing the software (and drivers) and while running the KD30 or FoUSB Programmer applications. This section also discusses the countermeasures and solutions to resolve these problems.

If, for any reason, you cannot resolve the problem, please contact your Renesas representative for assistance.

## A.1 USB Driver Problems

This section discusses the usual problems with the driver installation and how to fix it. The most common problem encountered is that Windows did not properly install the driver and so the ICD is not recognized. This may also cause the device status to indicate that the device is not working properly. An indication of this problem is the ICD status yellow LED - it blinks about 2-3 times a second. When the driver is installed properly, the yellow LED should only blink every second.

Before trying the following steps, try restarting your PC and see if this resolves the problem. You can check the status using the Device Manager. If the ICD appears under the Universal Serial Bus Controllers with NO red X or yellow exclamation point, the driver was installed properly.

If you are using Windows 2000 or Windows XP, you need to have Administrator privileges to be able to install the drivers.

For cases where the 'Device Status' states the device is not working properly, please try the following:

- Double-click on 'Renesas USB-Monitor' and a Renesas USB-Monitor Properties dialog box appears.
- Click on 'Driver' tab and click on 'Update Driver' button.
- Select 'Display a list...' and click on 'Have Disk' button.
- Specify and locate the 'C:\MTOOL\FoUSB\USB Drivers' folder on your PC and install 'usbmon.sys' driver.
- If this process does not work, please try the instructions below.

For cases where in the driver was not installed properly by Windows (Windows 98, Windows 2000) or not listed in the Device Manager > Universal Serial Bus Controllers, please try the following:

- Unplug the USB Cable so Windows removes driver from memory.
- Delete the driver 'usbmon.sys' from '\WINNT\SYSTEM32\DRIVERS\ folder in Windows 2000 or \WINDOWS\SYSTEM32\DRIVERS folder in Windows 98.
- Plug in ICD and try installing the driver as written above, but use the driver from the CD. The folder is C:\MTOOL\FoUSB\USB Drivers.

## A.2 KD30 Problems

This section discusses the cause of the problem and countermeasures to resolve it. The common problems encountered with KD30 are:

- USB option cannot be selected from the initialization screen
- Cannot connect to target
- KD30 already exists
- Issues that may come up during debug operations

### A.2.1 USB Option Unavailable

When USB cannot be selected from KD30's Init dialog box, you might be using an old version of KD30 that does not support USB. Uninstall this version of KD30 and install latest version of KD30 from the \Tools\KD30 directory of the SKP CD.

### A.2.2 Cannot Connect to Target

When the message 'Can't connect with the target' is displayed after KD30 startup, there are several reasons that may cause this message to appear. Each cause and the corresponding countermeasure are discussed below.

- The SKP is not connected correctly.

Please connect the ICD to your PC. Note: Regardless of whether the ICD is bus or target-powered, please connect target board to ICD board first before plugging the USB cable to your PC. Please see section 4 on system (SKP8CMINI) connectivity.

- The ICD has no power (Power LED on ICD is off).

Please ensure that the Power Mode switch on the ICD is on the 'USB' side. In 'Target' position, the ICD is powered from the target side.

- USB was not selected on the Init dialog box.

Please select 'USB' from the Init dialog box that is displayed right after you start KD30.

- The selected MCU on the ICD board and the actual target MCU (R8C/11) do not match.

Close the error message by clicking on 'OK' button, and then click on the 'Cancel' button of the KD30 Init window to close KD30. Make sure you select 'R5F21114.mcu'. If the MCU loaded on the ICD is different, KD30 will re-program the ICD to match it.

- The target MCU is damaged.

Try a different target board and see if KD30 will come up as you may have a damaged board or MCU.



### A.2.3 KD30 Already Exists

When a message 'KD30 already exists' is displayed, the usual cause of this problem is that the KD30 application was not properly closed. Please check if KD30 is already running by looking at your task bar. If KD30 cannot be found there, bring up Task Manager (press CTRL-ALT-DEL once to display the 'Task Manager'). Select KD30.exe on the 'Processes' list and click on 'End Process' to terminate KD30.

### A.2.4 Issues that may come up During Debug Operations

While using KD30 to debug user code, some issues may come up because the limitations discussed in section 6 were not satisfied. These common issues are listed on table A.2, including the countermeasures.

**Table A.2. Problems while using KD30**

Problem	Possible Cause/s and Solution
After stepping a few instructions, KD30 hangs	<ul style="list-style-type: none"> <li>Changes were made to UART1 SFR's.</li> </ul>
Breakpoints do not seem to work	<ul style="list-style-type: none"> <li>KD30 is in "free RUN" mode. From the "Init" window (Environment &gt; Init), change RUN mode to "Sample Mode".</li> </ul>
KD30 locks up (cannot stop program) or Communication error message is displayed.	<ul style="list-style-type: none"> <li>Changes made to UART1 SFR's.</li> <li>Ensure no limitations in Section 6 were violated.</li> <li>Re-initialize the system without closing KD30. See note below.</li> <li>Do a hardware reset. User-program runaway may be corrupting the kernel (RAM, interrupt vectors, flags, etc.) Close KD30, hit reset button on the SKP8CMINI to reset the board, and then restart KD30.</li> </ul>
Download problems	<ul style="list-style-type: none"> <li>Filenames or directory names contain spaces or special characters.</li> <li>HEW project not properly set up (startup files missing or out of order, files added to wrong member, etc). Try creating a new project and adding your source files to it. For details, please see HEW user's manual.</li> </ul>

To re-initialize the system without closing KD30, try the following:

- Press the [OK] button on the error dialog box to close it.
- When an Exit dialog box appears, press the [Cancel] button to close it.
- Hit reset button on the SKP16C26 board.
- Press KD30 reset button.

After initialization, debugging can resume. However, it is recommended that you download your program again before debugging.

*Note: If it has been identified that there are problems with the ICD, please see the ICD's (RTA-FoUSB-MON) user's manual and troubleshooting.*

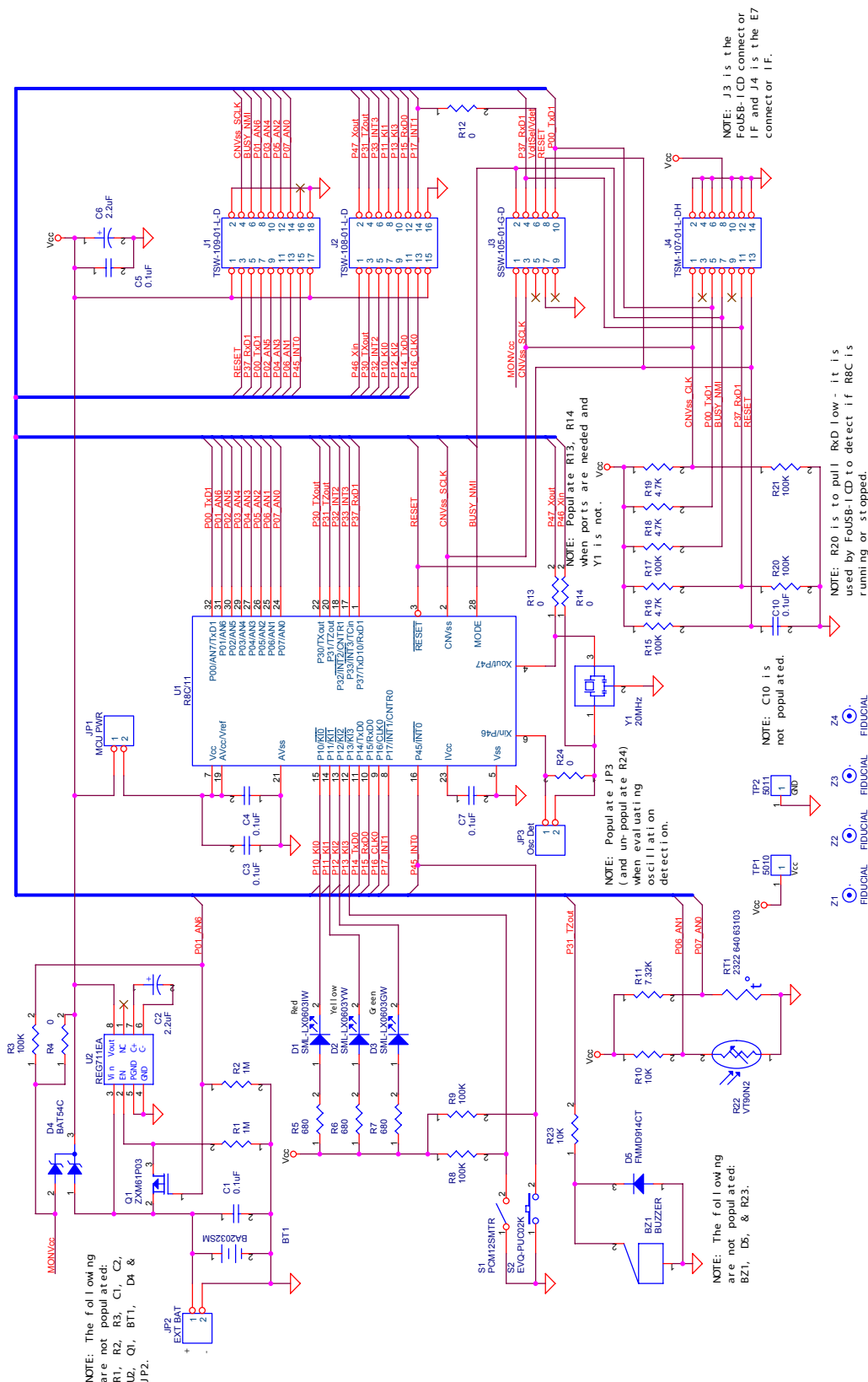
### **A.3 Installing Required Files Manually**

If for any reason you need to install the SKP tools and files manually, please consult the 'Manual Installation for SKP8CMINI.pdf' file located at the root of the SKP8CMINI CD.

This document will guide you through installation of the development tools and USB drivers, and copying of SKP files.

## Appendix B. Reference Manuals

Item	Title	Description
1.	<b>Mini R8C SKP Quick-Start Guide</b>	Document that will help you get started on using the SKP8CMINI.
2.	<b>Mini R8C SKP User's Manual</b>	Installation and operation guide for the SKP8CMINI.
3.	<b>Mini R8C Board Schematic</b>	Schematic diagram for the Mini R8C board.
4.	<b>Mini R8C Board BOM</b>	Bill of materials for the Mini R8C board.
5.	<b>R8C/11 Group Hardware Manual</b>	Specifications for the R8C/11 MCU.
6.	<b>R8C Series Software Manual</b>	This document details the instruction set and timing information for the R8C series CPU cores.
7.	<b>AS30 User's Manual</b>	Assembly language programming guide for the R8C/Tiny and M16C/20/60 series MCUs.
8.	<b>NC30 User's Manual</b>	ANSI C-language programming guide for the R8C/Tiny and M16C series MCUs.
9.	<b>M16C/20/60 Series Sample Programs</b>	Sample programs and application notes for the M16C/20/60 and R8C series MCUs.
10.	<b>HEW User's Manual</b>	High-performance Embedded Workshop User's Manual.
11.	<b>KD30 User's Manual</b>	Easy-to-use source and assembly debugger.
12.	<b>AS30 User's Manual</b>	Assembly Language Guide for AS30 assembler.
13.	<b>NC30 User's Manual</b>	ANSI C-Compiler Guide for NC30WA C-language compiler.
14.	<b>USB Monitor User's Manual</b>	User guide and operation manual for the ICD Board.

Mini R8C Starter Kit Plus  
User's Manual Rev. 1.2

# Appendix D. Mini R8C Bill-of-Materials

Mini R8C/Tiny Board					BILL OF MATERIALS Rev. 1.3					
ITEM NO	DNP	Reel	DESCRIPTION	QTY PER	Mfg	Mfg P/N	Vendor	Vendor P/N	PACKAGE TYPE	Designators
1			Flash MCU	1	Renesas	R5F21114DFP			See Drawing	U1
2	*	*	Voltage Regulator	0	TI	REG711EA-3/2K5	Digkey	REG711EA-3/2K5CT-ND	DGK	U2
3	*	*	20MHz Ceramic resonator	1	Panasonic	EF0-BM2005E5	Digkey	PX200BCT-ND	See Drawing	Y1
4	*	*	Red LED	1	Lumex	SML-LX0603IW-TR	Digkey	67-1548-1-ND	0603	D1
5	*	*	Yellow LED	1	Lumex	SML-LX0603YW-TR	Digkey	67-1550-1-ND	0603	D2
6	*	*	Green LED	1	Lumex	SML-LX0603GW-TR	Digkey	67-1549-1-ND	0603	D3
7	*	*	Regulator On/Off Diode	0	Zetex	BAT54C	Digkey	BAT54CFSTR-ND	SOT-23	D4
8	*	*	Buzzer diode	0	Zetex	FMMD914TA	Digkey	FMMD914CT-ND	SOT-23	D5
9	*	*	18-Pin 4mm Stack Connectors	0	Samtec	TSW-109-07-L-D			See Drawing	J1
10	*	*	16-Pin 4mm Stack Connectors	0	Samtec	TSW-108-07-L-D			See Drawing	J2
11	*	*	10-Pin Receptable - FoUSB-ICD IF	1	Samtec	SSW-105-01-G-D			See Drawing	J3
12	*	*	14-Pin Right Angle Header - E7 I/F	1	Samtec	TSM-107-01-L-DH			See Drawing	J4
13	*	*	2-Pin Header	2	Samtec	TMM-101-01-G-D			See Drawing	JP1, JP3
14	*	*	2-Pin Header - External Battery	0	Waldom/Molex	22-03-2021	Digkey	WM4000	See Drawing	JP2
15	*	*	Slide Switch	1	C & K	PCM12SMTR	Newark	28C3147	See Drawing	S1
16	*	*	Pushbutton Switch	1	Panasonic	EVQ-PUC02K	Digkey	P10849SCT-ND	See Drawing	S2
17	*	*	CR2032 Coin Battery Holder	0	MPD	BA2032SM	Digkey	BA2032SM-ND	See Drawing	BT1
18	*	*	P FET - Regulator On/Off	0	Diodes	ZXM61P03FTA	Digkey	ZXM61P03FTR-ND	SOT-23	Q1
19	*	*	Voltage Regulator On/Off Resistors	0	Panasonic	ERJ-3GEYJ105V	Digkey	P1.0MGTR-ND	0603	R1, R2
20	*	*	Voltage Regulator On/Off Resistors	0	Panasonic	ERJ-3GEYJ104V	Digkey	P100KGTR-ND	0603	R3
21	*	*	Pull-up/Pull-down Resistors	6	Panasonic	ERJ-3GEYJ104V	Digkey	P100KGTR-ND	0603	R8, R9, R15, R17, R20, R21
22	*	*	Pull-up/Pull-down Resistors	2	Panasonic	ERJ-3GEYJ472V	Digkey	P4.7KGTR-ND	0603	R16, R18
23	*	*	Pull-up/Pull-down Resistors	0	Panasonic	ERJ-3GEYJ472V	Digkey	P4.7KGTR-ND	0603	R19
24	*	*	LED Resistors	3	Panasonic	ERJ-3GEYJ681V	Digkey	P680GTR-ND	0603	R5, R6, R7
25	*	*	CdS Cell Resistor	1	Panasonic	ERJ-3GEYJ103V	Digkey	P10KGTR-ND	0603	R10
26	*	*	Buzzer Bias Resistor	0	Panasonic	ERJ-3GEYJ103V	Digkey	P10KGTR-ND	0603	R23
27	*	*	Thermistor Bias Resistor	1	Panasonic	ERJ-6ENF7321V	Digkey	P7.32KCTR-ND	0805	R11
28	*	*	Disconnect Resistors	2	Panasonic	ERJ-3GEY0R00V	Digkey	P0.0GTR-ND	0603	R4, R12
29	*	*	Disconnect Resistors	0	Panasonic	ERJ-3GEY0R00V	Digkey	P0.0GTR-ND	0603	R13, R14, R24
30	*	*	0.1uF Ceramic Bypass Caps	4	Panasonic	ECJ-1VB1C104K	Digkey	PCC1762TR	0603	C3, C4, C5, C7
31	*	*	Ceramic Bypass Caps	0	Panasonic	ECJ-1VB1C104K	Digkey	PCC1762TR	0603	C1, C10
32	*	*	2.2uF Voltage Regulator Cap	0	Panasonic	ECS-T1CY225R	Digkey	PCS3225TR	EIA-A	C2
33	*	*	2.2uF Voltage Regulator Cap	1	Panasonic	ECS-T1CY225R	Digkey	PCS3225TR	EIA-A	C6
34	*	*	Vcc Test Pin	0	Keystone	5010	Digkey	5010K	See Drawing	TP1
35	*	*	Gnd Test Pin	0	Keystone	5011	Digkey	5011K	See Drawing	TP2
36	*	*	CR2032 Lithium Cell Battery	0	Panasonic	CR2032	Digkey	P189-ND		BT1A
37	*	*	2-Pin Jumper/Shunt	2	Samtec	2SN-BK-G			See Drawing	JP1A, JP3A
38	*	*	Thermistor	1	BC	2322 640 66103	Digkey	BC1482-ND	See Drawing	RT1
39	*	*	CdS Cell	1	PRECISION	VT935G	Newark	95F9039	See Drawing	R22
40	*	*	Transducer audio piezo 25v SMD	0	CUI	CMT-1603	Digkey	102-1193-1-ND	See Drawing	BZ1
41	*	*	Mini R8C Board	1	Renesas	RDECER8CM Rev. 1.0				

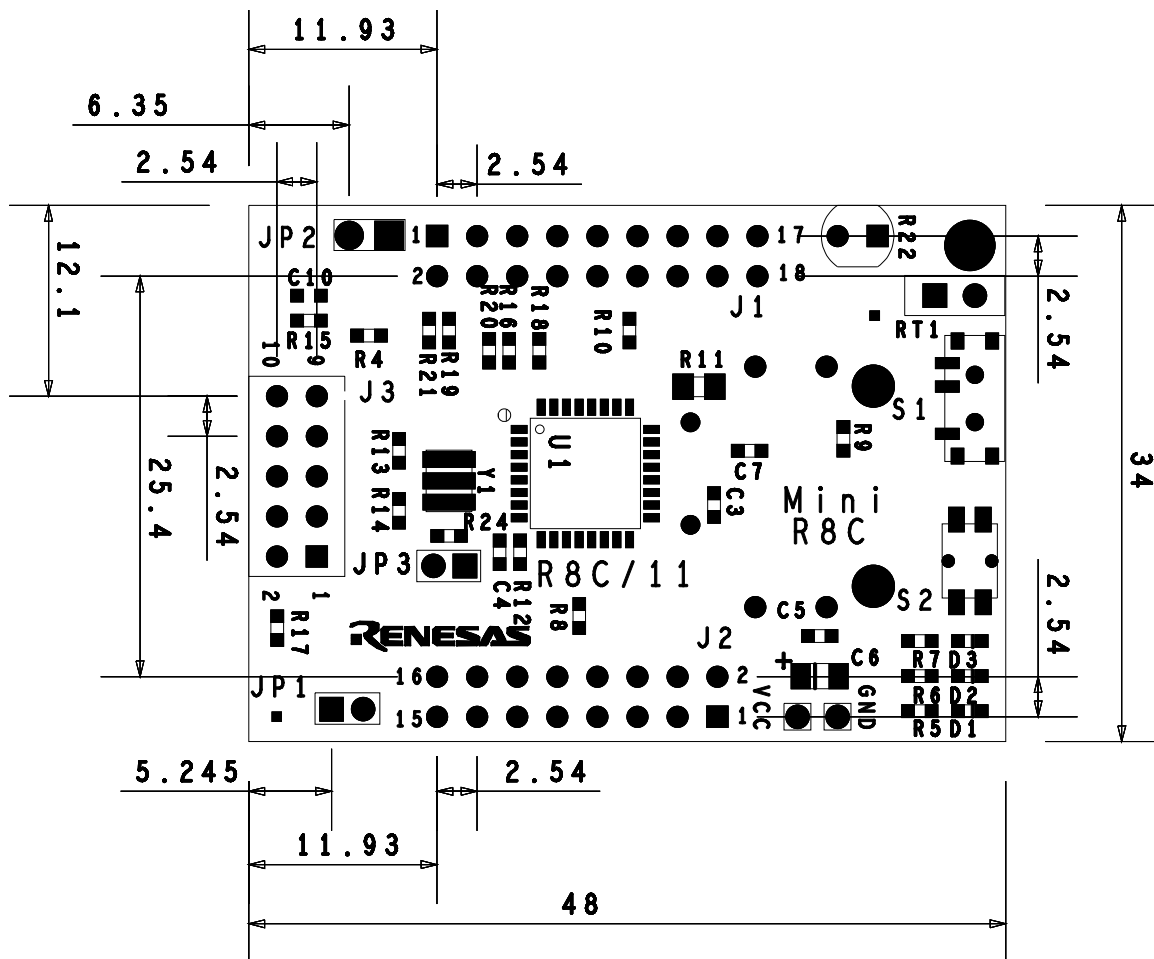
## Appendix E. J1 & J2 Pin Assignment

J1	
Pin No.	Signal
1	Vcc
2	GND
3	RESET
4	CNVss
5	P37/RxD1
6	MODE
7	P00/AN7/TxD11
8	P01/AN6
9	P02/AN5
10	P03/AN4
11	P04/AN3
12	P05/AN2
13	P06/AN1
14	P07/AN0
15	P45/INT0
16	NC
17	Vcc
18	GND

J2	
Pin No.	Signal
1	Xin/P46
2	Xout/P47
3	P30/TXout/CMP10
4	P31/TZout/CMP11
5	P32/INT2/CNTR1/CMP12
6	P33/INT3/TCin
7	P10/KI0/AN8/CMP00
8	P11/KI1/AN9/CMP01
9	P12/KI2/AN10/CMP02
10	P13/KI3/AN11
11	P14/TxD0
12	P15/RxD0
13	P16/CLK0
14	P17/INT1/CNTR0
15	Vcc
16	GND

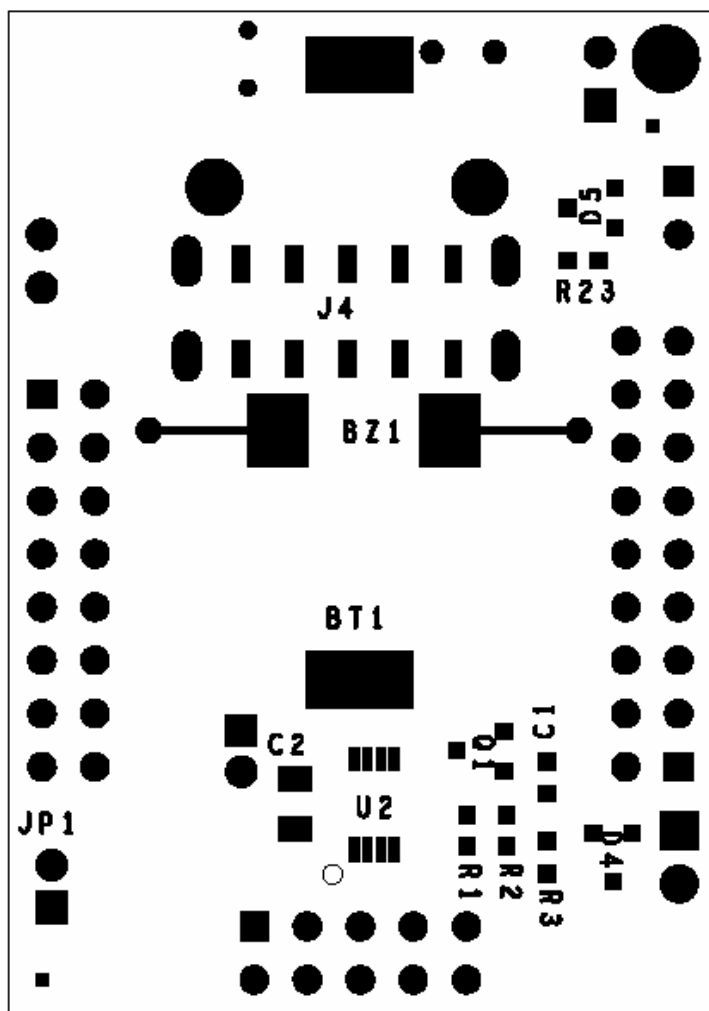
# Appendix F. Board Dimensions

Mini R8C board dimensions are provided here for making connections to user defined add-on boards.



## Appendix G. Expansion Circuit

Additional wiring has been provided on the bottom side of the Mini R8C board to provide a battery powered, voltage regulated circuit. The schematic of appendix C details this circuit and the BOM in appendix D specifies all the parts. The data sheet for the voltage regulator is included on the SKP CD. The layout drawing is provided below. NOTE: Ensure that R4 is un-populated when the battery-regulator circuit is populated.





## Appendix H. In-Circuit Debugger

For details on how to use the ICD, please see RTA-FoUSB-MON User's Manual.