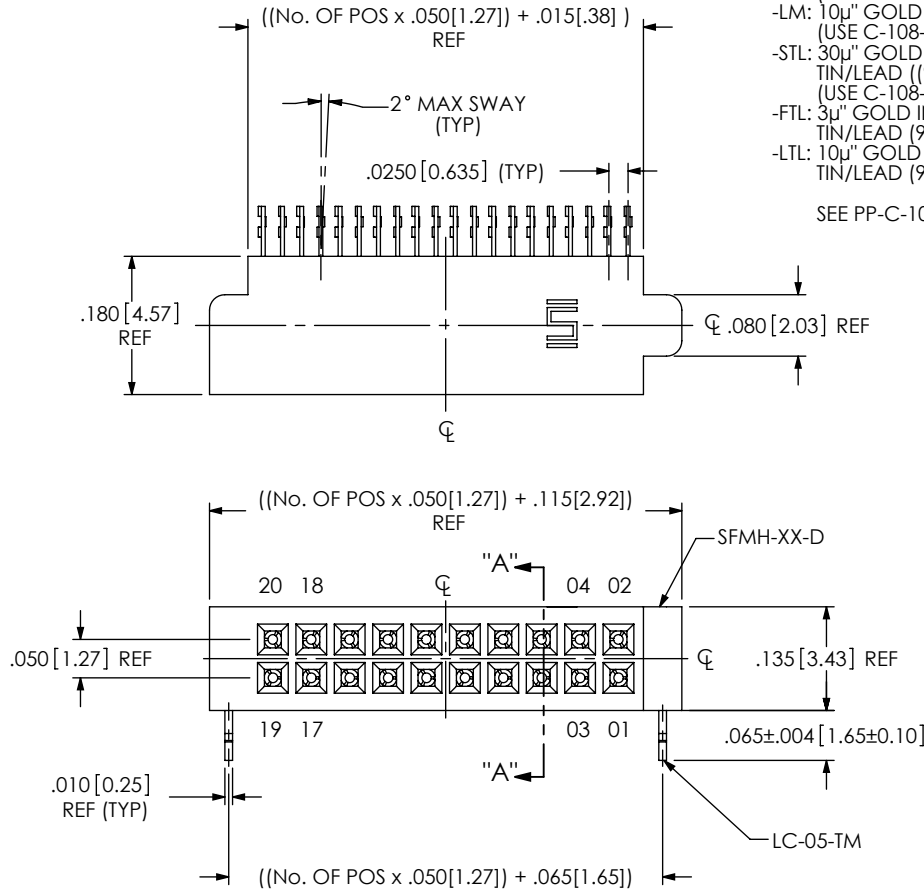


NOTES:

1. MINIMUM PUSHOUT FORCE: .5 LB.
2. NOTE DELETED.
3. Ⓢ REPRESENTS A CRITICAL DIMENSION.
4. NOTE DELETED.
5. DUE TO THE HIGH AMOUNT OF INSERTION FORCE NEEDED, THE -LC OPTION IS NOT COMPATIBLE WITH AUTO PLACEMENT. SAMTEC RECOMMENDS MANUAL PLACEMENT FOR ALL ASSEMBLIES WITH THE -LC OPTION.
6. TO BE MEASURED FROM A DATUM LINE MADE BY THE INSULATOR.

DO NOT
SCALE FROM
THIS PRINT

FIG 1
SFMH-110-02-XXX-D-LC SHOWN



SFMH-1XX-XX-XXX-D-XX-XX

No OF POSITIONS PER ROW
-05 THRU -50

LEAD STYLE
-02

PLATING SPECIFICATION
(VALUES GIVEN ARE IN MICRO-INCHES)

- L: 10μ" GOLD IN CONTACT AREA, GOLD FLASH ON TAIL (USE C-108-G & C-109-G)
- F: 3μ" GOLD IN CONTACT AREA, GOLD FLASH ON TAIL (USE C-108-FG & C-109-FG)
- S: 30μ" GOLD IN CONTACT AREA, MATTE TIN ON TAIL (USE C-108-S & C-109-S)
- LM: 10μ" GOLD IN CONTACT AREA, MATTE TIN ON TAIL (USE C-108-LM & C-109-LM)
- STL: 30μ" GOLD IN CONTACT AREA, TIN/LEAD ((90/10+/-5%)TAIL (USE C-108-STL & C-109-STL)
- FTL: 3μ" GOLD IN CONTACT AREA, TIN/LEAD ((90/10+/-5%) TAIL (USE C-108-FTL & C-109-FTL)
- LTL: 10μ" GOLD IN CONTACT AREA, TIN/LEAD ((90/10+/-5%) TAIL (USE C-108-LTL & C-109-LTL)

SEE PP-C-108-XXX & PP-C-109-XXX FOR PLATING DETAILS.

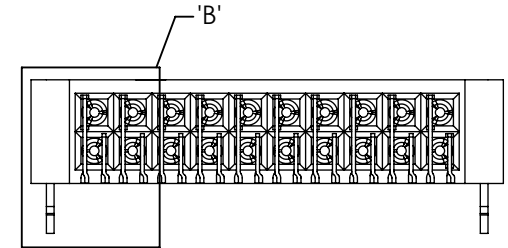
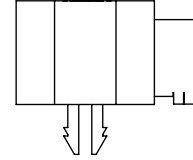
PACKAGING OPTIONS
-TR: TAPE & REEL

OPTIONS

- LC: LOCKING CLIP (SEE FIG 1, SHT 1) (NOT AVAILABLE W/ -WT OPTION) (SEE NOTE 5)
- * -SL: SOLDER LOCK (SEE FIG 2, SHT 2)
- WT: WELD TAB (SEE FIG. 3, SHT 2) (NOT AVAILABLE W/ -LC OPTION) (AVAILABLE ON POSITIONS -05 THRU -30)

ROW SPECIFICATION
-D: DOUBLE ROW

* NOT TOOLED



UNLESS OTHERWISE SPECIFIED,
DIMENSIONS ARE IN INCHES.

TOLERANCES ARE:

DECIMALS ANGLES
.XX: ±.01 [.3] ±5°
.XXX: ±.005 [.13]
.XXXX: ±.0020 [.051]

PROPRIETARY NOTE

THIS DOCUMENT CONTAINS INFORMATION
CONFIDENTIAL AND PROPRIETARY TO
SAMTEC, INC. AND SHALL NOT BE REPRODUCED
OR TRANSFERRED TO OTHER DOCUMENTS OR
DISCLOSED TO OTHERS OR USED FOR ANY
PURPOSE OTHER THAN THAT WHICH IT WAS
OBTAINED WITHOUT THE EXPRESSED WRITTEN
CONSENT OF SAMTEC, INC.

samtec

520 PARK EAST BLVD, NEW ALBANY, IN 47150
PHONE: 812-944-6733 FAX: 812-948-5047
e-Mail: info@SAMTEC.com code 55322

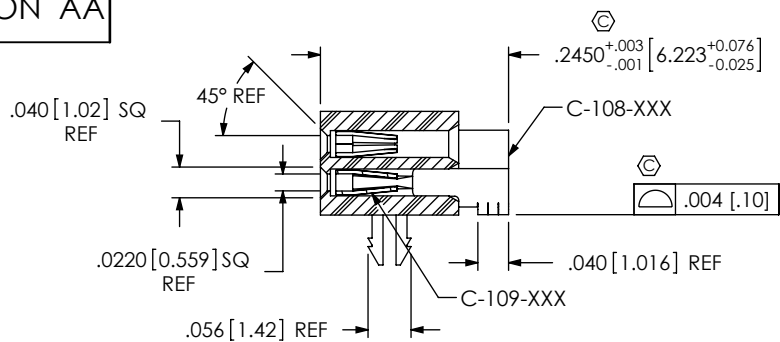
MATERIAL: DO NOT SCALE DRAWING
INSULATOR: LCP, UL 94 VO, COLOR: BLACK
CONTACT: PHOS BRONZE

SHEET SCALE: 2:1

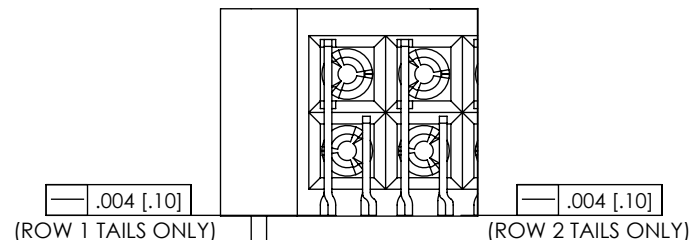
DESCRIPTION:
.050 x .050 SOCKET STRIP ASSEMBLY

DWG. NO.
SFMH-1XX-XX-XXX-D-XX-XX

BY: J. BROWNING 12/07/2009 SHEET 1 OF 3



SECTION "A"-"A"



DETAIL 'B'
SCALE 8:1

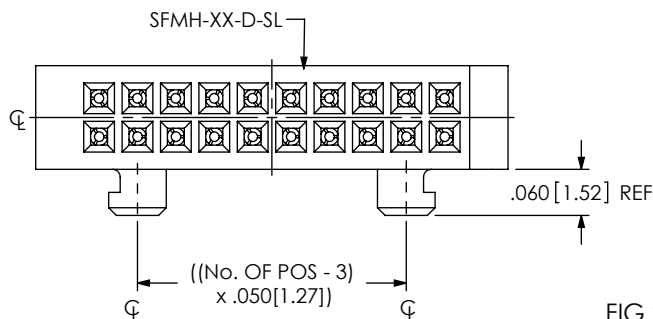


FIG 2
SFMH-110-02-XXX-D-SL SHOWN
(DIFFERENT AS SHOWN, OTHERWISE SAME AS FIG 1)
(*NOT TOOLED)

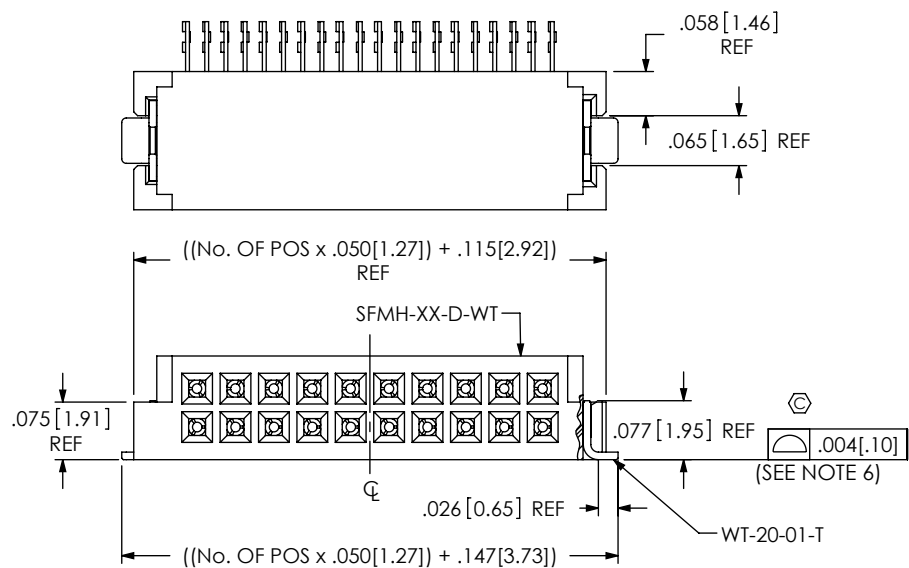
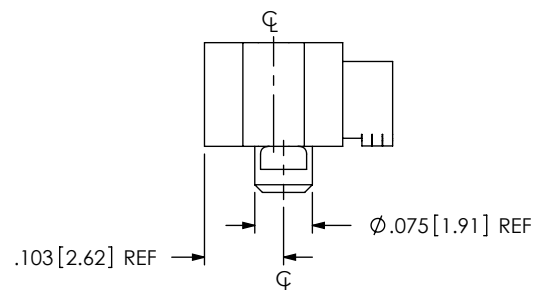
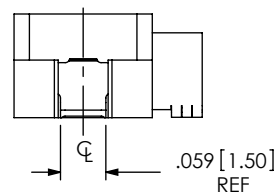


FIG 3
SFMH-110-02-XXX-D-WT SHOWN
(DIFFERENT AS SHOWN, OTHERWISE SAME AS FIG 1)



F:\DWG\MISC\MKTG\SFMH-1XX-XX-XXX-D-XX-XX-MKT.SLDDRW

PROPRIETARY NOTE

THIS DOCUMENT CONTAINS INFORMATION
CONFIDENTIAL AND PROPRIETARY TO
SAMTEC, INC. AND SHALL NOT BE REPRODUCED
OR TRANSFERRED TO OTHER DOCUMENTS OR
DISCLOSED TO OTHERS OR USED FOR ANY
PURPOSE OTHER THAN THAT WHICH IT WAS
OBTAINED WITHOUT THE EXPRESSED WRITTEN
CONSENT OF SAMTEC, INC.

DO NOT SCALE DRAWING

SHEET SCALE: 2:1

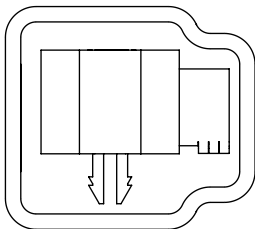
samtec

520 PARK EAST BLVD, NEW ALBANY, IN 47150
PHONE: 812-944-6733 FAX: 812-948-5047
e-Mail: info@SAMTEC.com code 55322

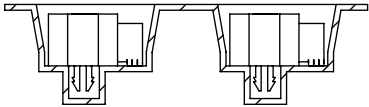
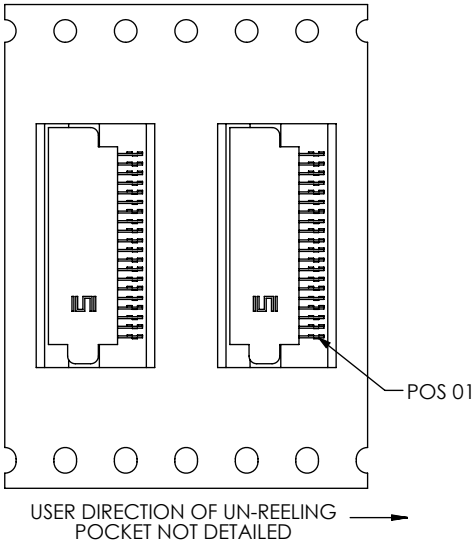
DESCRIPTION:
.050 x .050 SOCKET STRIP ASSEMBLY

DWG. NO.
SFMH-1XX-XX-XXX-D-XX-XX

BY: J. BROWNING 12/07/2009 SHEET 2 OF 3



TUBE VIEW
USE TUBE PT-1-24-01-38
USE PLUG TP-24 (2)



TAPE & REEL VIEW

F:\DWG\MISC\MKTG\SFMH-1XX-XX-XXX-D-XX-XX-MKT.SLDDRW

PROPRIETARY NOTE
THIS DOCUMENT CONTAINS INFORMATION
CONFIDENTIAL AND PROPRIETARY TO
SAMTEC, INC. AND SHALL NOT BE REPRODUCED
OR TRANSFERRED TO OTHER DOCUMENTS OR
DISCLOSED TO OTHERS OR USED FOR ANY
PURPOSE OTHER THAN THAT WHICH IT WAS
OBTAINED WITHOUT THE EXPRESSED WRITTEN
CONSENT OF SAMTEC, INC.

DO NOT SCALE DRAWING

SHEET SCALE: 2:1



520 PARK EAST BLVD, NEW ALBANY, IN 47150
PHONE: 812-944-6733 FAX: 812-948-5047
e-Mail info@SAMTEC.com code 55322

DESCRIPTION:	.050 x .050 SOCKET STRIP ASSEMBLY	
DWG. NO.	SFMH-1XX-XX-XXX-D-XX-X	
BY: J. BROWN	DATE: 02/07/2009	SHEET 3 OF 3