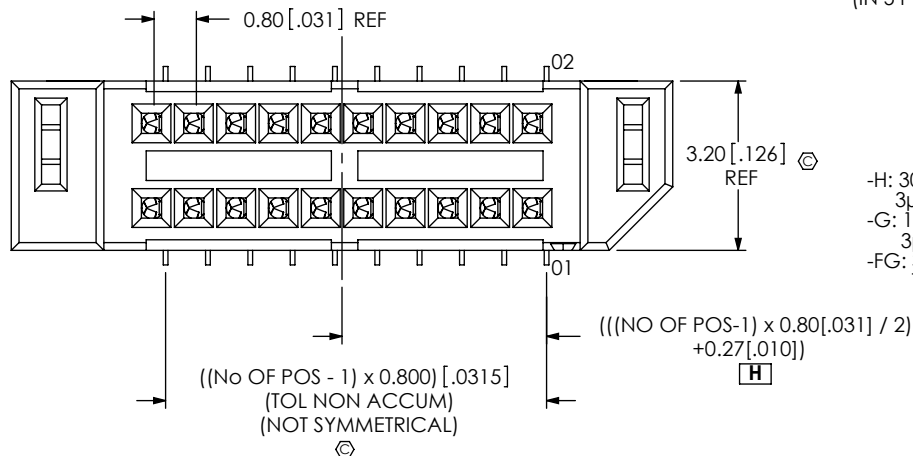


**DESIGNED & DIMENSIONED
IN MILLIMETERS [INCHES]**

SEMXX-1XX-XX-XX.X-XX-D-XX-XX

DO NOT
SCALE FROM
THIS PRINT

FIG 1
SEM-110-02-03.0-XX-D SHOWN



BODY OPTION
(LEAVE BLANK IF OPTION NOT USED, USE SEM)
L: FRICTION LOCK
(USE SEML, SEE FIG 6, SHEET 3)
S: SLIM
(USE SEMS, SEE FIG 7, SHEET 3)
(NOT AVAILABLE WITH -A, -LC, OR -WT)
(ONLY AVAILABLE WITH -K-TR)

No OF POSITIONS
-05 THRU -50 (PER ROW)
(IN 5 POS INCREMENTS)

LEAD STYLE
-02: SURFACE MOUNT

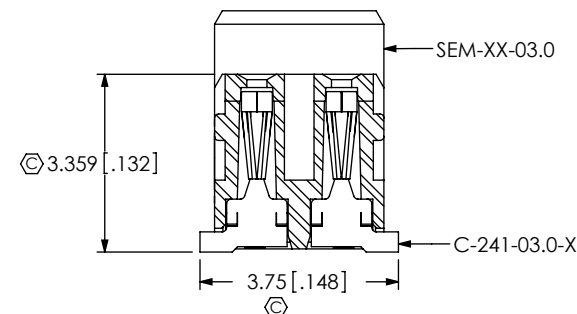
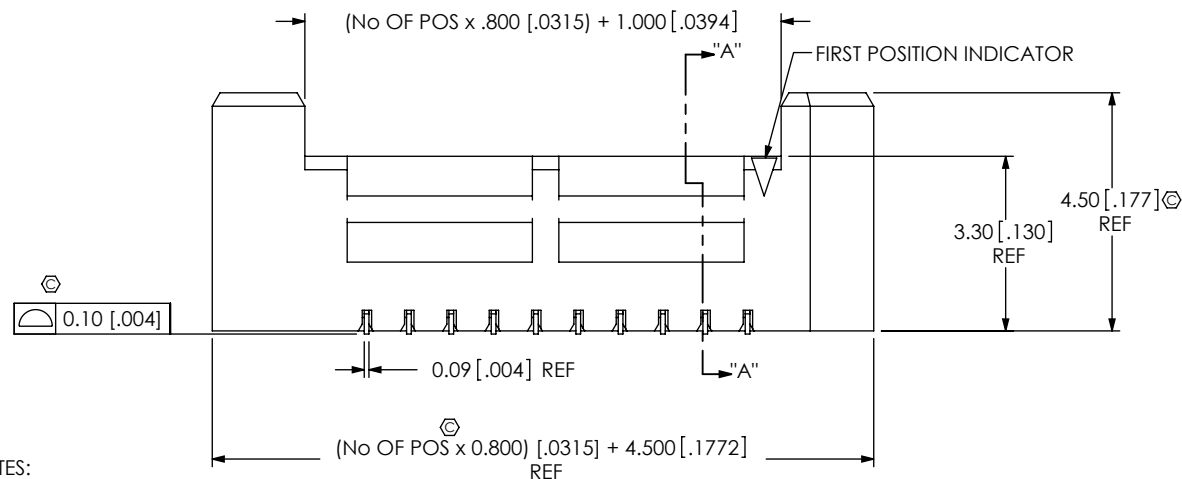
STACK HEIGHT
-03.0: 3 MM

PLATING SPECIFICATION
-H: 30μ" HEAVY GOLD IN CONTACT AREA,
3μ" GOLD ON TAIL
-G: 10μ" GOLD IN CONTACT AREA,
3μ" GOLD ON TAIL
-FG: 3μ" FLASH GOLD ON ENTIRE
TERMINAL

OPTION
-TR: TAPE & REEL
(SEE NOTE 7 & 8)
-K: POLYIMIDE FILM
(USE K-500-300, SEE FIG 5, SHT 2)

OPTION
-A: ALIGNMENT PIN (SEE FIG 2, SHEET 2)
(NOT AVAILABLE WITH -LC OR -WT)
(NOT AVAILABLE ON SEML OR SEMS)
-LC: LOCKING CLIP (SEE FIG 3, SHEET 2
& NOTE 9)
(NOT AVAILABLE WITH -A OR -WT)
(NOT AVAILABLE ON SEML OR SEMS)
-WT: WELD TAB (SEE FIG 4, SHEET 2)
(NOT AVAILABLE WITH -A OR -LC)
(STANDARD ON SEML)
(NOT AVAILABLE ON SEMS)

ROW SPECIFICATION
-D: DOUBLE ROW



SECTION "A"-"A"

NOTES:

1. **⊗** REPRESENTS A CRITICAL DIMENSION.
2. MINIMUM PUSHOUT FORCE FOR CONTACT, LOCKING CLIP AND WELD TAB: 2.22N.
3. HEIGHT VARIATION BETWEEN ANY TWO CONTACTS: 0.13 MAXIMUM.
4. PARTS TO BE PACKAGED IN TRAYS UNLESS OTHERWISE SPECIFIED.
5. POSITIONS -05 THRU -20 WILL HAVE ONLY ONE FRICTION LOCK.
POSITIONS -25 THRU -40 WILL HAVE TWO FRICTION LOCKS.
POSITIONS -45 THRU -50 WILL HAVE THREE FRICTION LOCKS.
6. NOTE DELETED.
7. FOR QUANTITIES UP TO 49 PIECES, NO LEADER, TRAILER, OR REEL WILL BE SUPPLIED.
FOR QUANTITIES 50-124, NO LEADER, OR TRAILER WILL BE SUPPLIED.
8. ALL SAMPLES AND/OR NO CHARGE ORDERS ARE REQUIRED TO BE PACKAGED IN
SUSPENSION PACKS AND NOT T&R.
9. DUE TO HIGH AMOUNT OF INSERTION FORCE NEEDED, THE -LC OPTION IS NOT
COMPATIBLE WITH AUTO-PLACEMENT. SAMTEC RECOMMENDS MANUAL PLACEMENT
FOR ALL ASSEMBLIES WITH THE -LC OPTION.

F:\DWG\MISC\MKTG\SEMXX-1XX-XX-XX.X-XX-D-XX-XX-MKT.SLDDRW

UNLESS OTHERWISE SPECIFIED,
DIMENSIONS ARE IN MILLIMETERS.
TOLERANCES ARE:

DECIMALS ANGLES
X.X: $\pm 0.3 [.01]$ 2°
X.XX: $\pm 0.13 [.005]$
X.XXX: $\pm 0.051 [.0020]$

PROPRIETARY NOTE

THIS DOCUMENT CONTAINS INFORMATION
CONFIDENTIAL AND PROPRIETARY TO
SAMTEC, INC. AND SHALL NOT BE REPRODUCED
OR TRANSFERRED TO OTHER DOCUMENTS OR
DISCLOSED TO OTHERS OR USED FOR ANY
PURPOSE OTHER THAN THAT WHICH IT WAS
OBTAINED WITHOUT THE EXPRESSED WRITTEN
CONSENT OF SAMTEC, INC.

MATERIAL: DO NOT SCALE DRAWING
INSULATOR: VECTRA E1301
CONTACT: #25 BeCu, HALF HARD
LOCKING CLIP: PHOS BRONZE 510
WELD TAB: BRASS ALLOW 260, FULL HARD

SHEET SCALE: 7:1

samtec

520 PARK EAST BLVD, NEW ALBANY, IN 47150
PHONE: 812-944-6733 FAX: 812-948-5047
e-Mail: info@SAMTEC.com code 55322

DESCRIPTION:
.8MM TIGER EYE MICRO SOCKET

DWG. NO.
SEMXX-1XX-XX-XX.X-XX-D-XX-XX

BY: B RAY 10-19-2007 **SHEET 1 OF 3**

FIG 2
SEM-110-02-03.0-XX-D-A SHOWN

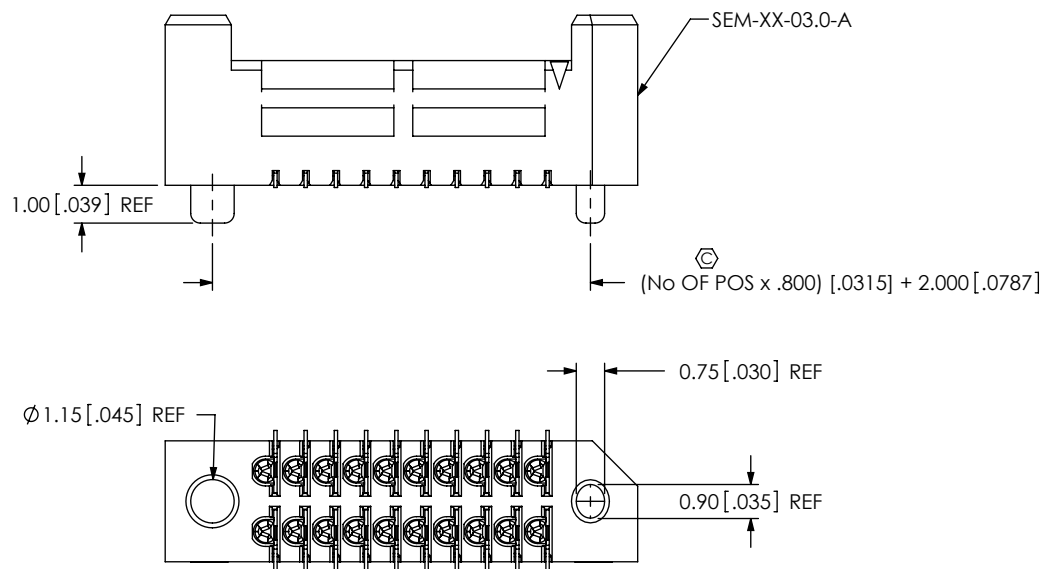


FIG 4
SEM-110-02-03.0-XX-D-WT SHOWN

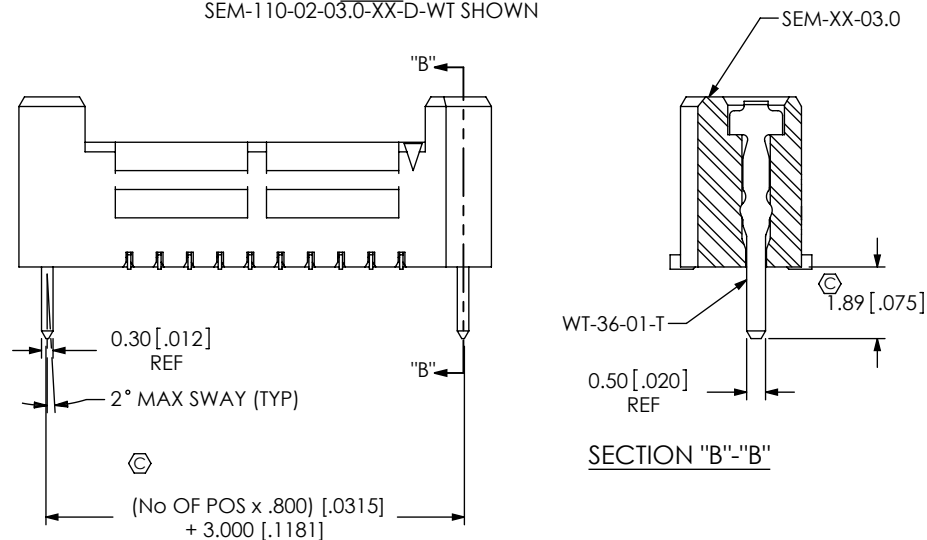


FIG 3
SEM-110-02-03.0-XX-D-LC SHOWN

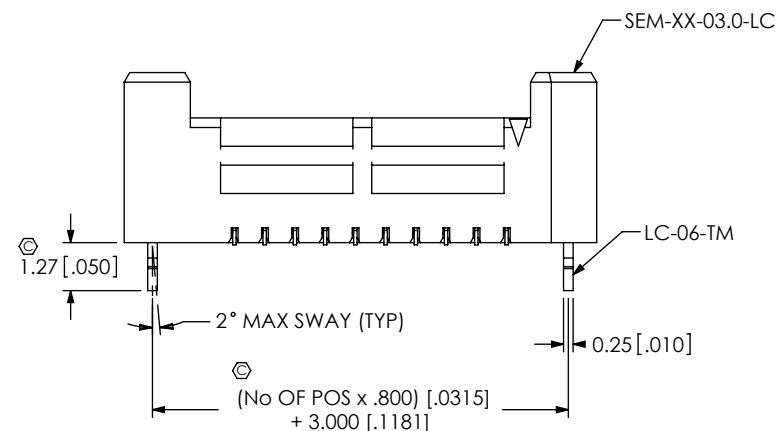
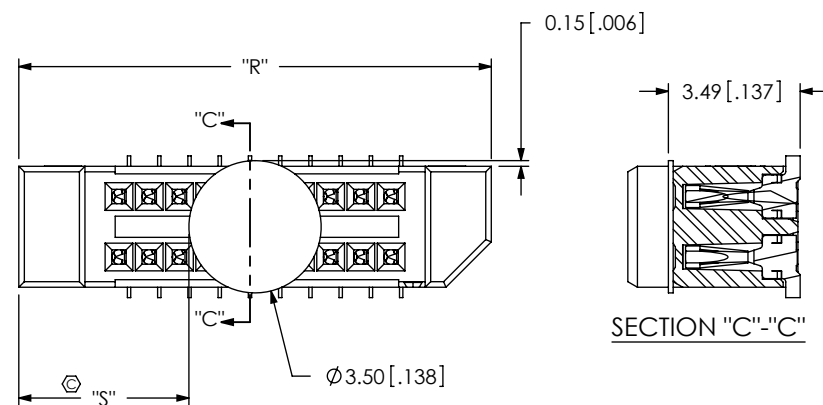


FIG 5
SEM-110-02-03.0-XX-D-K SHOWN



NOTE: "R" = OVERALL LENGTH (REF)
"S" = {"R" - 3.51 [.138]}/2 [.0787] ± 0.51 [.02]

PROPRIETARY NOTE

THIS DOCUMENT CONTAINS INFORMATION
CONFIDENTIAL AND PROPRIETARY TO
SAMTEC, INC. AND SHALL NOT BE REPRODUCED
OR TRANSFERRED TO OTHER DOCUMENTS OR
DISCLOSED TO OTHERS OR USED FOR ANY
PURPOSE OTHER THAN THAT WHICH IT WAS
OBTAINED WITHOUT THE EXPRESSED WRITTEN
CONSENT OF SAMTEC, INC.

DO NOT SCALE DRAWING

SHEET SCALE: 5:1

samtec

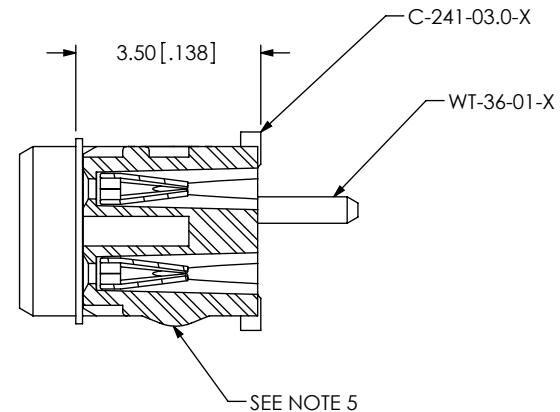
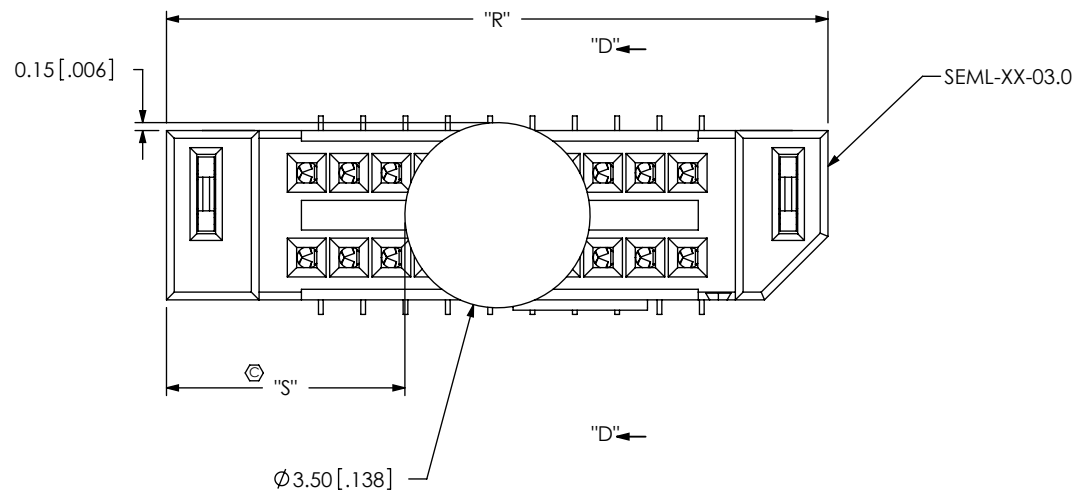
520 PARK EAST BLVD, NEW ALBANY, IN 47150
PHONE: 812-944-6733 FAX: 812-948-5047
e-Mail: info@SAMTEC.com code 55322

DESCRIPTION:
.8MM TIGER EYE MICRO SOCKET

DWG. NO.
SEM-110-02-03.0-XX-D-K SHOWN

BY: B RAY 10-19-2007 SHEET 2 OF 3

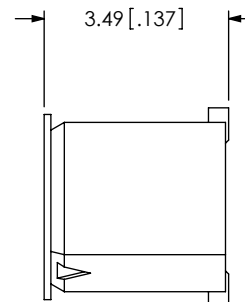
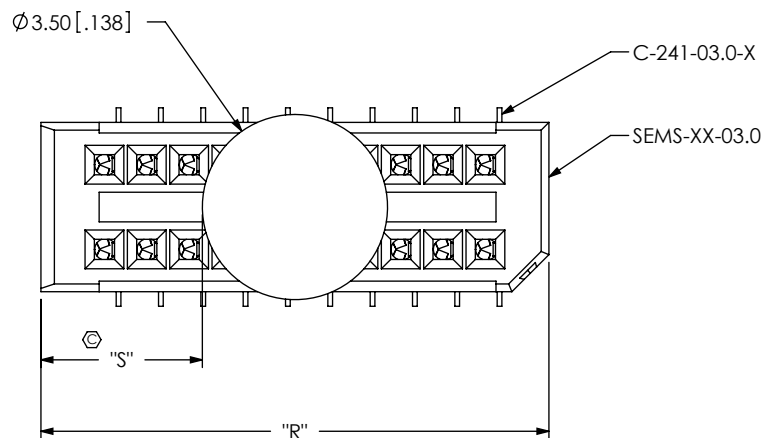
FIG 6
SEML-110-02-03.0-XX-D-WT-K SHOWN



SECTION "D"-"D"

NOTE: "R" = OVERALL LENGTH (REF)
"S" = $\{("R" - 3.51 [.138]) / 2\} \pm 0.51 [.02]$

FIG 7
SEMS-110-02-03.0-XX-D-K SHOWN



NOTE: "R" = $\{(\text{No. OF POS} \times 0.800) + 1.600\} \pm 0.05$
"S" = $\{("R" - 3.51 [.138]) / 2\} \pm 0.51 [.02]$

PROPRIETARY NOTE

THIS DOCUMENT CONTAINS INFORMATION
CONFIDENTIAL AND PROPRIETARY TO
SAMTEC, INC. AND SHALL NOT BE REPRODUCED
OR TRANSFERRED TO OTHER DOCUMENTS OR
DISCLOSED TO OTHERS OR USED FOR ANY
PURPOSE OTHER THAN THAT WHICH IT WAS
OBTAINED WITHOUT THE EXPRESSED WRITTEN
CONSENT OF SAMTEC, INC.

DO NOT SCALE DRAWING

SHEET SCALE: 7:1

samtec

520 PARK EAST BLVD, NEW ALBANY, IN 47150
PHONE: 812-944-6733 FAX: 812-948-5047
e-Mail: info@SAMTEC.com code 55322

DESCRIPTION:
.8MM TIGER EYE MICRO SOCKET

DWG. NO.
SEMX-1XX-XX-XX.X-XX-D-XX-XX

BY: B RAY 10-19-2007 SHEET 3 OF 3