

DO NOT  
SCALE FROM  
THIS PRINT

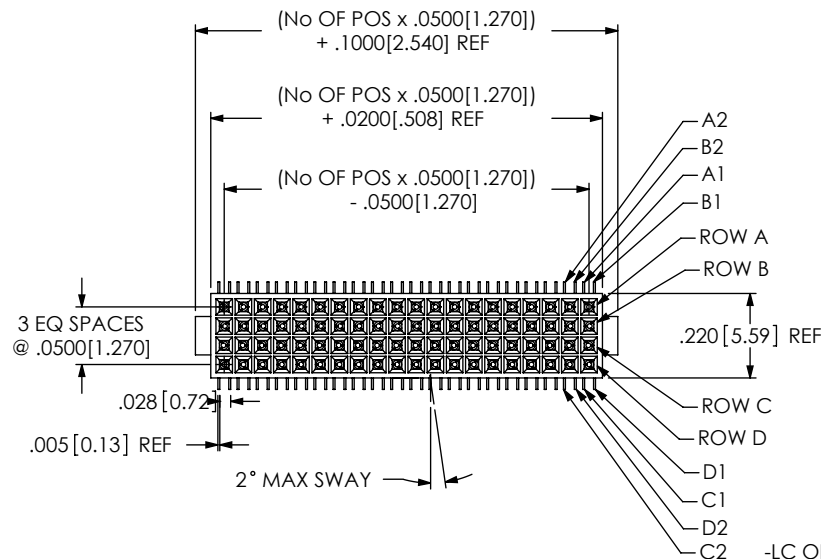
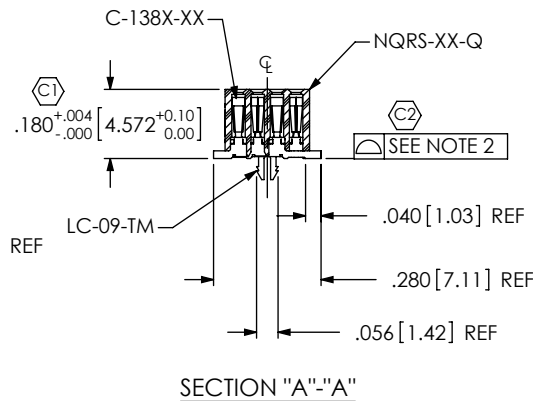
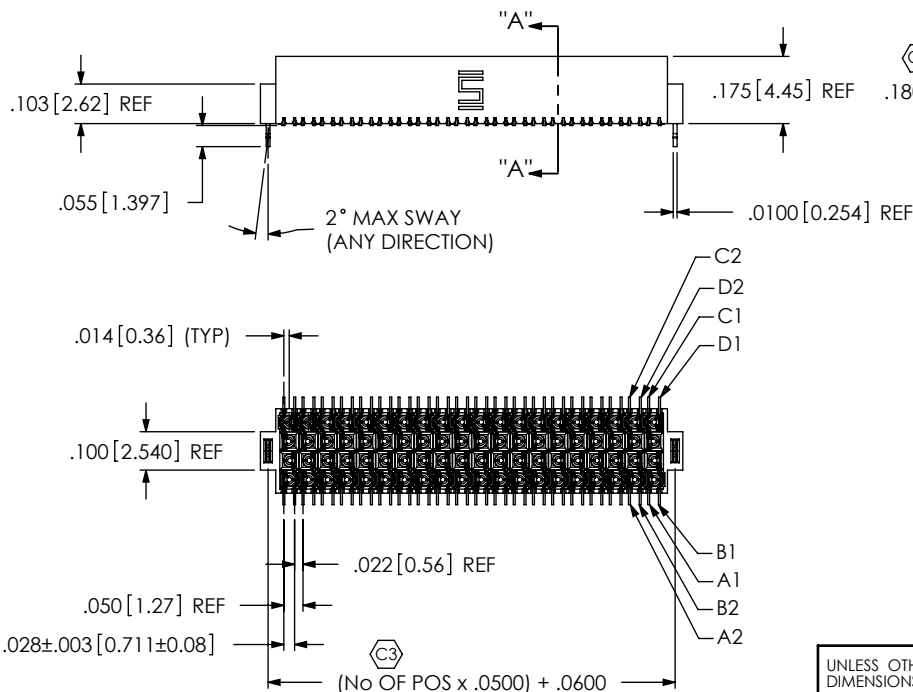


FIG 1  
-LC OPTION SHOWN



ROLC-1XX-XX-XX-Q-XX-X

No OF POSITIONS  
-05 THRU -50 (PER ROW)  
[IN MULTIPLES OF 5]

LEAD STYLE

-02: SURFACE MOUNT  
(USE C-138-XX)  
-L2: LOW INSERTION FORCE  
SURFACE MOUNT  
(USE C-138L-XX)

PLATING SPECIFICATION

-S: SELECTIVE, .000030 GOLD  
ON POST, TIN ON TAIL  
(USE C-138X-S)  
-L: LIGHT SELECTIVE, .000010  
GOLD ON POST, MATTE TIN  
TAILS (USE C-138X-L)  
-SM: SELECTIVE, .000030 GOLD  
ON POST, MATTE TIN TAILS  
(USE C-138X-S)

OPTION

-P: PICK & PLACE PAD  
(USE PPP-18, SEE FIG 3, SHT 2)  
-TR: TAPE & REEL  
-K: POLYAMIDE FILM  
(USE K-500-300, SEE FIG 4, SHT 2)  
\* -N: POLARIZED NOTCH BODY  
(USE NQRS-XX-Q-N, SEE FIG 5, SHT 2)  
(ONLY AVAILABLE FOR -LC OPTION)

**\* NOT RELEASED FOR PRODUCTION**

OPTION

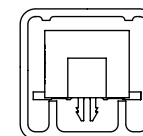
-LC: LOCKING CLIP  
(SEE FIG 1)  
-LCR: LOCKING CLIP REVERSED  
(USE NQRS-XX-Q-LCR,  
SEE FIG 2, SHT 2)

ROW SPECIFICATION

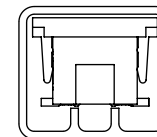
-Q: QUAD (USE NQRS-XX-Q)

PACKAGING VIEW

OPTION	PACKAGING TUBE	PLUG
NONE, -K, -LC-K	PT-1-24-11-63	TP-09
-P	PT-1-24-04-38	TP-03



PT-1-24-11-63



PT-1-24-04-38

NOTES:

1. REPRESENTS A CRITICAL DIMENSION.
2. COPLANARITY TO BE WITHIN .006[.15].
3. BURR ALLOWANCE: .0015[.038] MAX.
4. MINIMUM PUSHOUT FORCE: .5 LB.
5. MAXIMUM ALLOWABLE BOW: .002[.05] INCH/INCH AFTER ASSEMBLY.

UNLESS OTHERWISE SPECIFIED,  
DIMENSIONS ARE IN INCHES.  
TOLERANCES ARE:  
DECIMALS ANGLES  
.XX: ±.01 [.3] ±2°  
.XXX: ±.005 [.13]  
.XXXX: ±.0020 [.051]

PROPRIETARY NOTE

THIS DOCUMENT CONTAINS INFORMATION  
CONFIDENTIAL AND PROPRIETARY TO  
SAMTEC, INC. AND SHALL NOT BE REPRODUCED  
OR TRANSFERRED TO OTHER DOCUMENTS OR  
DISCLOSED TO OTHERS OR USED FOR ANY  
PURPOSE OTHER THAN THAT WHICH IT WAS  
OBTAINED WITHOUT THE EXPRESSED WRITTEN  
CONSENT OF SAMTEC, INC.

MATERIAL: DO NOT SCALE DRAWING  
INSULATOR: LCP, COLOR: BLACK  
CONTACT: BeCu

SHEET SCALE: 2:1

DESCRIPTION:

**samtec**

520 PARK EAST BLVD, NEW ALBANY, IN 47150  
PHONE: 812-944-6733 FAX: 812-948-5047  
e-Mail: info@SAMTEC.com code: 55322

.050 QUAD ROW ROLC ASSEMBLY

DWG. NO.

ROLC-1XX-XX-XX-Q-XX-X

BY: DEAN P

2/20/1999

SHEET 1 OF 2

FIG. 2

-LCR: LOCKING CLIP REVERSED  
[DIFFERENT AS SHOWN, OTHERWISE SAME AS FIG. 1]

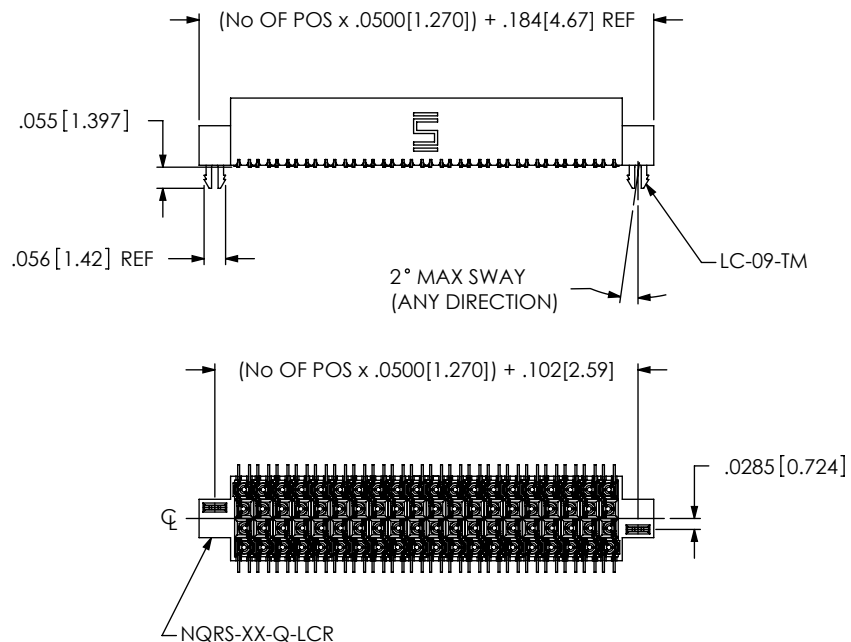


FIG. 5

-N: POLARIZED NOTCH BODY  
[DIFFERENT AS SHOWN, OTHERWISE SAME AS FIG. 1]  
(ONLY AVAILABLE FOR -LC OPTION)

**NOT RELEASED FOR PRODUCTION**

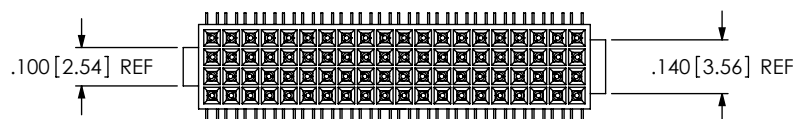
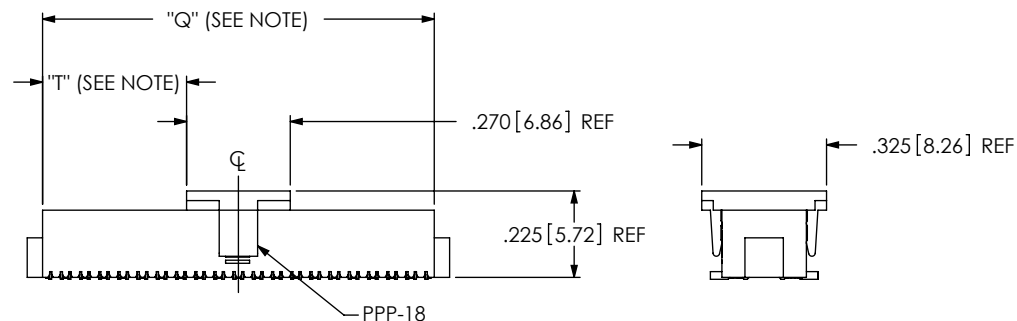


FIG. 3

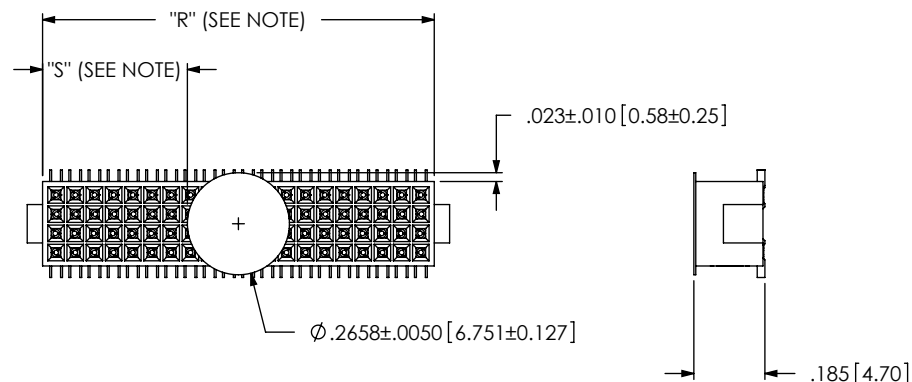
-P: PICK AND PLACE PAD  
[USE PPP-18]



NOTE: "Q" = USE MEASURED DIMENSION (REF)  
"T" = ((("Q" - .270[5.72]) / 2) ±.020[.51])

FIG. 4

-K: POLYAMIDE FILM PAD  
[USE K-500-300]



NOTE: "R" = USE MEASURED DIMENSION (REF)  
"S" = ((("R" - .2658[6.751]) / 2) ±.020[.51])

# PROPRIETARY NOTE

THIS DOCUMENT CONTAINS INFORMATION  
CONFIDENTIAL AND PROPRIETARY TO  
SAMTEC, INC. AND SHALL NOT BE REPRODUCED  
OR TRANSFERRED TO OTHER DOCUMENTS OR  
DISCLOSED TO OTHERS OR USED FOR ANY  
PURPOSE OTHER THAN THAT WHICH IT WAS  
OBTAINED WITHOUT THE EXPRESSED WRITTEN  
CONSENT OF SAMTEC, INC.

DO NOT SCALE DRAWING

SHEET SCALE: 2:1

**samtec**

520 PARK EAST BLVD, NEW ALBANY, IN 47150  
PHONE: 812-944-6733 FAX: 812-948-5047  
e-Mail: info@SAMTEC.com code: 55322

DESCRIPTION:  
.050 QUAD ROW ROLC ASSEMBLY

DWG. NO.  
**ROLC-1XX-XX-XX-Q-XX-X**

BY: DEAN P 2/20/1999 SHEET 2 OF 2