

DO NOT
SCALE FROM
THIS PRINT

TABLE 2

No. OF POS	"C"	"D"
-016	.838 [21.27]	.788 [20.00]
-032	1.625 [41.28]	1.575 [40.01]
-048	2.413 [61.28]	2.363 [60.01]
-064	3.200 [81.28]	3.150 [80.01]
-080	3.988 [101.28]	3.938 [100.01]

ASO ONLY (APPLICATION SPECIFIC ORDER)

TABLE 1

No OF POSITIONS	COPLANARITY (INCLUDES GND PLANE)
-016 THRU -032	.004[0.10]
-048 THRU -080	.006[0.15]

QSS-XXX-XX-XXX-D-DP-XXX

No OF POSITIONS

-016, -032, -048,
*064, *080
(PER ROW)

* SEE NOTES 10 & 11

LEAD STYLE

-01: .1430[3.632]

PLATING SPECIFICATION

(SEE NOTES 7 & 9)

-F: 3µ" FLASH SELECTIVE GOLD IN
CONTACT AREA, MATTE TIN ON TAIL
(USE C-126-21-F & T-1G2-01-F)
(SEE NOTE 7)

-L: 10µ" LIGHT SELECTIVE GOLD, IN
CONTACT AREA, MATTE TIN ON TAIL
(USE C-126-21-L & T-1G2-01-L)

-H: 30µ" HEAVY GOLD IN CONTACT
AREA, 3µ" GOLD ON TAIL
(USE C-126-21-H & T-1G2-01-G)

-STL: 30µ" HEAVY SELECTIVE GOLD IN
CONTACT AREA, TIN LEAD ON TAIL
(USE C-126-21-STL & T-1G2-01-STL)

-FTL: 3µ" FLASH SELECTIVE GOLD IN
CONTACT AREA, TIN LEAD ON TAIL
(USE C-126-21-FTL & T-1G2-01-FTL)

OPTION

-A: ALIGNMENT PINS
(USE QSS-25-01-D-XX-A)
(NOT AVAILABLE WITH -LC)

-LC: LOCKING CLIPS (SEE NOTE 12)
(USE LC-08-TM-01)
(SEE FIG 2, SHT 2)

(NOT AVAILABLE WITH -A)

-K: POLYIMIDE FILM PAD
(USE K-850-650)
(SEE FIG 3, SHT 2)

-TR: TAPE & REEL (48 POS MAX)
(32 POS MAX FOR -GP OPTION)

-GP: GUIDE POSTS
(USE QSS-25-01-D-XX-X-GP)
(SEE FIG 4, SHT 3)

(NOT AVAILABLE WITH -LS2)

-LS2: LOCKING SCREW
(USE QSS-25-01-D-XX-LS2)
(SEE FIG 5, SHT 3)

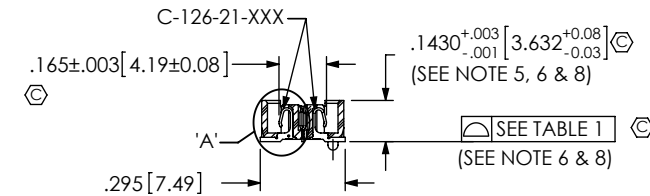
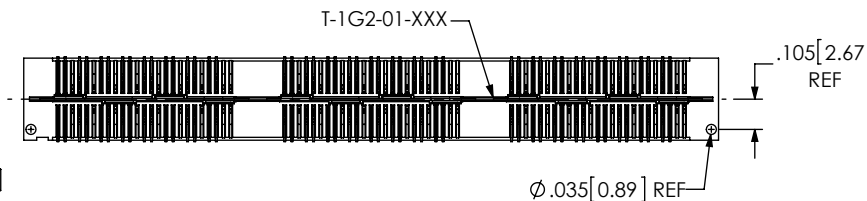
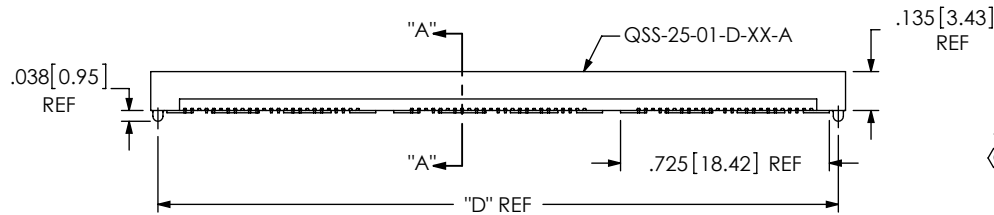
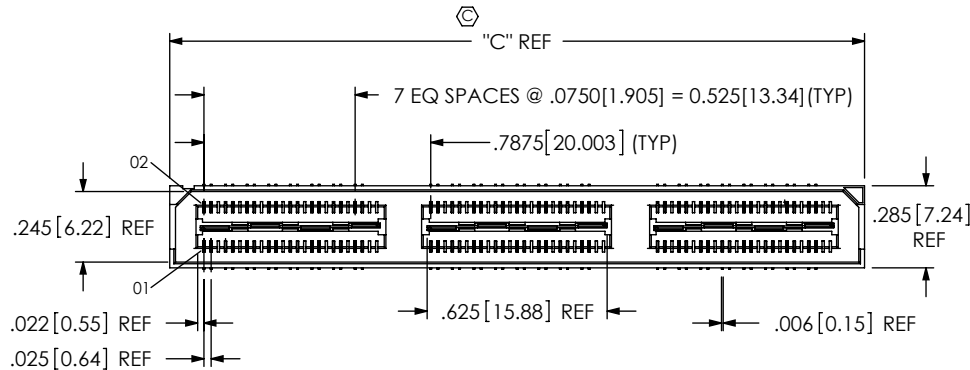
(NOT AVAILABLE WITH -GP)
(FOR MATING WITH
QTS-...-RA-LS2)

DIFFERENTIAL PAIRS

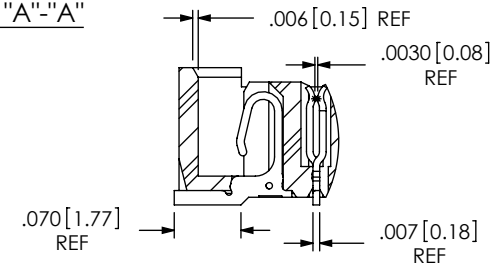
ROW SPECIFICATION

-D: DOUBLE (USE QSS-25-XX-D-XX)

No OF BANKS



SECTION "A"-"A"



DETAIL 'A'
SCALE 5:1

NOTES:

1. MIN CONTACT RETENTION: 5 OZ
2. MIN GROUND PLANE RETENTION: 8 OZ
3. Ⓢ REPRESENTS A CRITICAL DIMENSION.
4. PARTS ARE MOLD TO POSITION.
5. MAX VARIANCE: .002[.05].
6. DIMENSION APPLIES TO CONTACTS AND GROUND PLANES, INDEPENDENT OF EACH OTHER.
7. -L PLATING CAN BE SUBSTITUTED FOR -F PLATING.
8. GROUND PLANE PRESS HEIGHT MUST BE .003[.08] LESS THAN THE MAXIMUM HEIGHT OR .001[.03] GREATER THAN THE MINIMUM HEIGHT OF THE SIGNAL PIN.
9. MAY SUBSTITUTE C-126-01-XXX FOR C-126-21-XXX.
10. FOR NEW APPLICATIONS REQUIRING THESE POSITIONS, PLEASE CONTACT SAMTEC INTERCONNECT PROCESSING GROUP.
11. FOR -064 AND -080 POSITIONS USE C-269-11-XXX. DO NOT SUB C-126-01-XXX
12. DUE TO THE HIGH AMOUNT OF INSERTION FORCE NEEDED, THE -LC OPTION IS NOT COMPATIBLE WITH AUTO PLACEMENT. SAMTEC RECOMMENDS MANUAL PLACEMENT FOR ALL ASSEMBLIES WITH THE -LC OPTION.

FIG 1

-A: ALIGNMENT PIN OPTION
(QSS-048-01-XXX-D-DP-A SHOWN)

UNLESS OTHERWISE SPECIFIED,
DIMENSIONS ARE IN INCHES.

TOLERANCES ARE:

DECIMALS

.XX: ±.01[.3]

.XXX: ±.005[.13]

.XXXX: ±.0020[.05]

ANGLES

2°

PROPRIETARY NOTE

THIS DOCUMENT CONTAINS INFORMATION
CONFIDENTIAL AND PROPRIETARY TO
SAMTEC, INC. AND SHALL NOT BE REPRODUCED
OR TRANSFERRED TO OTHER DOCUMENTS OR
DISCLOSED TO OTHERS OR USED FOR ANY
PURPOSE OTHER THAN THAT WHICH IT WAS
OBTAINED WITHOUT THE EXPRESSED WRITTEN
CONSENT OF SAMTEC, INC.

MATERIAL:

DO NOT SCALE DRAWING

SHEET SCALE: 1.5:1

INSULATOR: LCP, UL94V-0; COLOR: BLACK

CONTACT: PHOS BRONZE

GROUND PLANE: PHOS BRONZE

DESCRIPTION:

.635mm DIFFERENTIAL PAIRS HS SOCKET ASSEMBLY

DWG. NO.

QSS-XXX-XX-XXX-D-DP-XXX

BY: KEVIN B

07/10/2000

SHEET 1 OF 3

F:\DWG\MISC\MKTG\QSS-XXX-XX-XXX-D-DP-XXX-MKT.SLDDRW

samtec

520 PARK EAST BLVD, NEW ALBANY, IN 47150
PHONE: 812-944-6733 FAX: 812-948-5047
e-Mail: info@SAMTEC.com code 55322

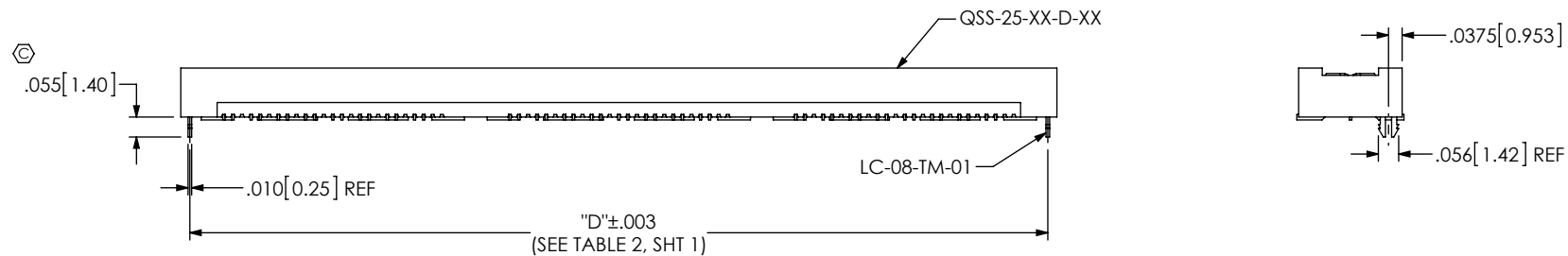


FIG 2
-LC: LOCKING CLIP OPTION
(QSS-048-01-XXX-D-DP-LC SHOWN)
(DIFFERENT AS SHOWN, OTHERWISE SAME AS FIG 1)

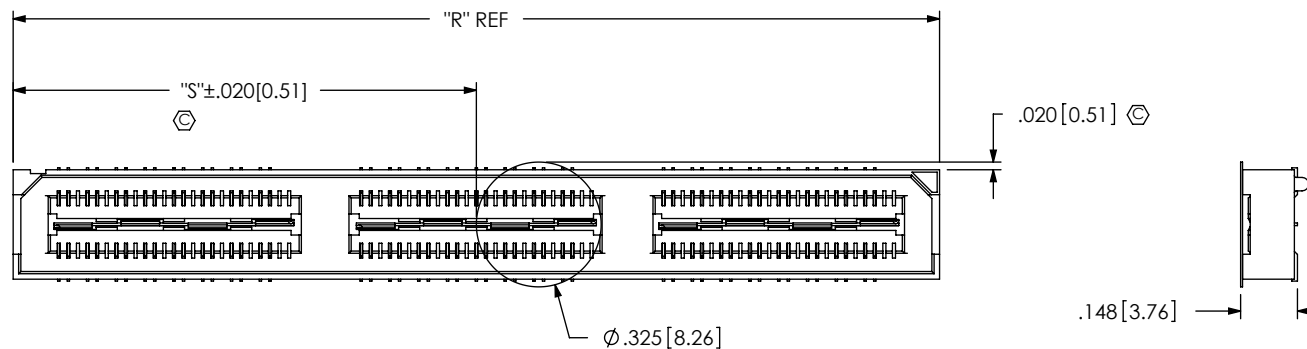


FIG 3
-K: POLYIMIDE FILM PAD
(USE K-850-650)

TABLE 3

No OF POS	"R"			"S"		
	-LC, -A	-GP	-LS2	-LC, -A	-GP	-LS2
-016	.838 [21.27]	1.217 [30.90]	1.338 [33.97]	.256 [6.51]	.446 [11.32]	.506 [12.86]
-032	1.625 [41.28]	2.004 [50.90]	2.125 [53.98]	.650 [16.51]	.840 [21.32]	.900 [22.86]
-048	2.413 [61.28]	2.792 [70.90]	2.913 [73.98]	1.044 [26.51]	1.233 [31.32]	1.294 [32.86]
-064	3.200 [81.28]	3.579 [90.91]	3.700 [93.98]	1.438 [36.51]	1.627 [41.33]	1.688 [42.86]
-080	3.988 [101.28]	4.367 [110.91]	4.488 [113.98]	1.831 [46.51]	2.021 [51.33]	2.081 [52.86]

PROPRIETARY NOTE

THIS DOCUMENT CONTAINS INFORMATION
CONFIDENTIAL AND PROPRIETARY TO
SAMTEC, INC. AND SHALL NOT BE REPRODUCED
OR TRANSFERRED TO OTHER DOCUMENTS OR
DISCLOSED TO OTHERS OR USED FOR ANY
PURPOSE OTHER THAN THAT WHICH IT WAS
OBTAINED WITHOUT THE EXPRESSED WRITTEN
CONSENT OF SAMTEC, INC.

DO NOT SCALE DRAWING

SHEET SCALE: 2:1

samtec

520 PARK EAST BLVD, NEW ALBANY, IN 47150
PHONE: 812-944-6733 FAX: 812-948-5047
e-Mail info@SAMTEC.com code 55322

DESCRIPTION:

.635mm DIFFERENTIAL PAIRS HS SOCKET ASSEMBLY

DWG. NO.

QSS-XXX-XX-XXX-D-DP-XXX

BY: KEVIN B

07/10/2000

SHEET 2 OF 3

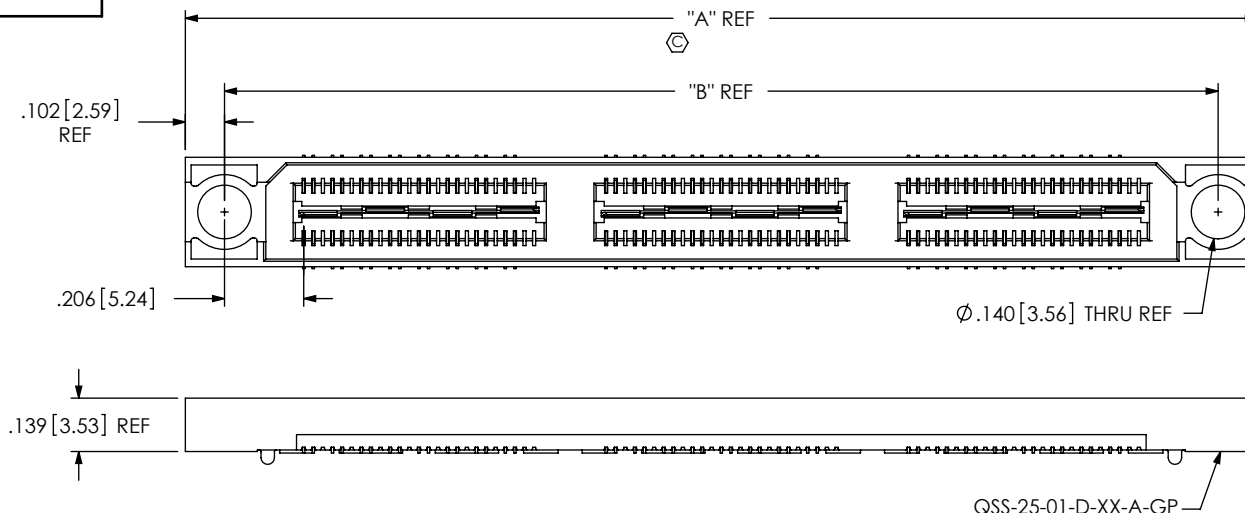


FIG 4
-GP: GUIDE POST OPTION
(QSS-048-01-XXX-D-DP-GP SHOWN)
(DIFFERENT AS SHOWN, OTHERWISE SAME AS FIG 1)
(32 POS MAX FOR TAPE & REEL OFFERING)

TABLE 4		
POSITIONS	"A"	"B"
-016	1.217[30.90]	1.013[25.72]
-032	2.004[50.90]	1.800[45.72]
-048	2.792[70.90]	2.588[65.72]
-064	3.580[90.91]	3.375[85.73]
-080	4.367[110.9]	4.163[105.73]

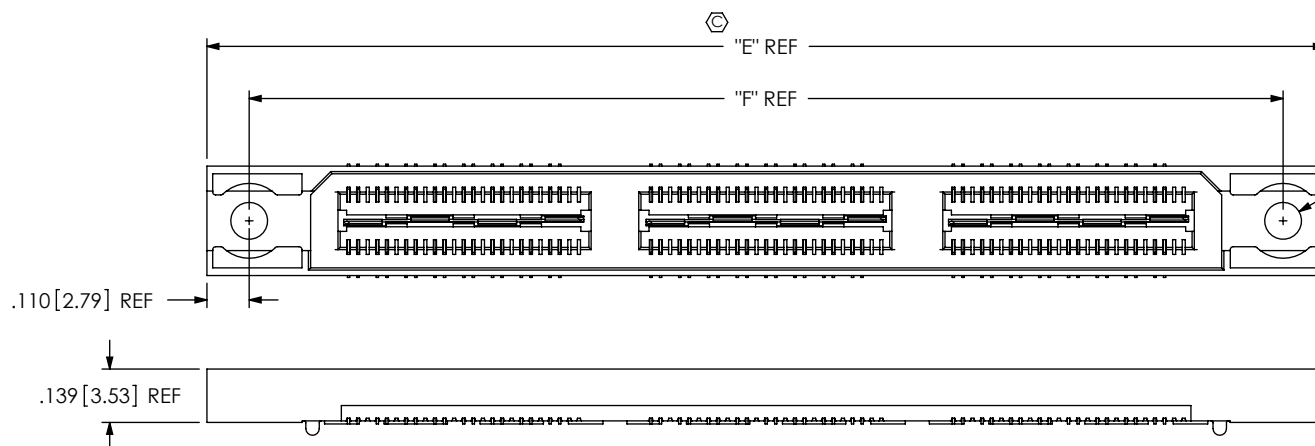


FIG 5
-LS2: LOCKING SCREW OPTION
(QSS-048-01-XXX-D-DP-LS2 SHOWN)
(DIFFERENT AS SHOWN, OTHERWISE SAME AS FIG 1)
(NOT AVAILABLE WITH -GP OPTION)

Ø.096[2.44] REF
(CLEARANCE HOLE FOR USE WITH 2-56 SCREW)

TABLE 5		
POS	"E"	"F"
-016	1.338 [33.97]	1.118 [28.38]
-032	2.125 [53.98]	1.905 [48.39]
-048	2.913 [73.98]	2.693 [68.39]
-064	3.700 [93.98]	3.480 [88.39]
-080	4.488 [113.98]	4.268 [108.39]

PROPRIETARY NOTE

THIS DOCUMENT CONTAINS INFORMATION
CONFIDENTIAL AND PROPRIETARY TO
SAMTEC, INC. AND SHALL NOT BE REPRODUCED
OR TRANSFERRED TO OTHER DOCUMENTS OR
DISCLOSED TO OTHERS OR USED FOR ANY
PURPOSE OTHER THAN THAT WHICH IT WAS
OBTAINED WITHOUT THE EXPRESSED WRITTEN
CONSENT OF SAMTEC, INC.

DO NOT SCALE DRAWING

SHEET SCALE: 2:1

samtec

520 PARK EAST BLVD, NEW ALBANY, IN 47150
PHONE: 812-944-6733 FAX: 812-948-5047
e-Mail: info@SAMTEC.com code 55322

DESCRIPTION:
.635mm DIFFERENTIAL PAIRS HS SOCKET ASSEMBLY

DWG. NO.
QSS-XXX-XX-XXX-D-DP-XXX

BY: KEVIN B 07/10/2000 SHEET 3 OF 3