

DO NOT
SCALE FROM
THIS PRINT

QMS-XXX-XX-XX-D-RA-XX-XXX-XX

No OF POSITIONS -
-026, -052, -078, -104
(PER ROW)

LEAD STYLE _____

-01: .062[1.57] BOARD

-02: .093[2.36] BOARD

PACKAGING OPTION
-TR: TAPE & REEL PACKAGING
(-026 & -052 WITH NO OPTIONS)
(-026 & -052 WITH -PC4)
(-026 WITH -PC8)

-OPTION

-K: KAPTON PAD (USE K-850-650)

-PC4: 4 POWER PINS

(SEE FIG. 2, SHEET 5)
(NOT AVAILABLE WITH -104 POS)
(NOT AVAILABLE WITH -MG)

-PC8: 8 POWER PINS

(SEE FIG. 3, SHEET 5)
(NOT AVAILABLE WITH -104 POS)
(NOT AVAILABLE WITH -MG)

GUIDE POST

-MG: METAL GUIDE POST
(LEAVE BLANK FOR PLASTIC OR PCX.
PLASTIC AVAILABLE AS ASO ONLY.)

-RA: RIGHT ANGLE

ROW SPECIFICATION

-D: DOUBLE (USE QMS-XXX-01-D-XX-RA)

PLATING SPECIFICATION
(SEE TABLE 6, SHEET 4)

-SL: 10μ" GOLD IN CONTACT AREA, MATTE TIN TAIL

-S: 30μ" GOLD IN CONTACT AREA, MATTE TIN TAIL

-L: 10 μ " GOLD IN CONTACT AREA, 3 μ " GOLD ON TAIL

-H: 30μ" GOLD IN CONTACT AREA, 3μ" GOLD ON TAIL

POSITION	"L"	"M"	"N"	"P"
-026	1.330 [33.78]	1.050 [26.67]	.625 [15.88]	1.080 [27.43]
-052	2.170 [55.12]	1.890 [48.01]	1.465 [37.21]	1.920 [48.77]
-078	3.010 [76.45]	2.730 [69.34]	2.305 [58.55]	2.760 [70.10]
-104	3.850 [97.79]	3.570 [90.68]	3.145 [79.88]	3.600 [91.44]

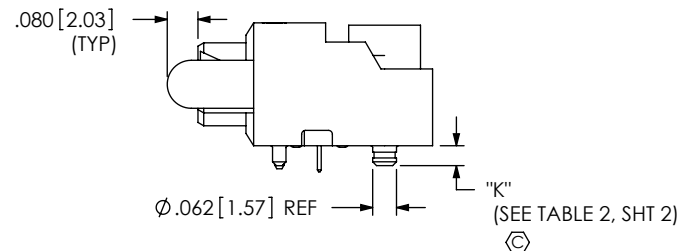
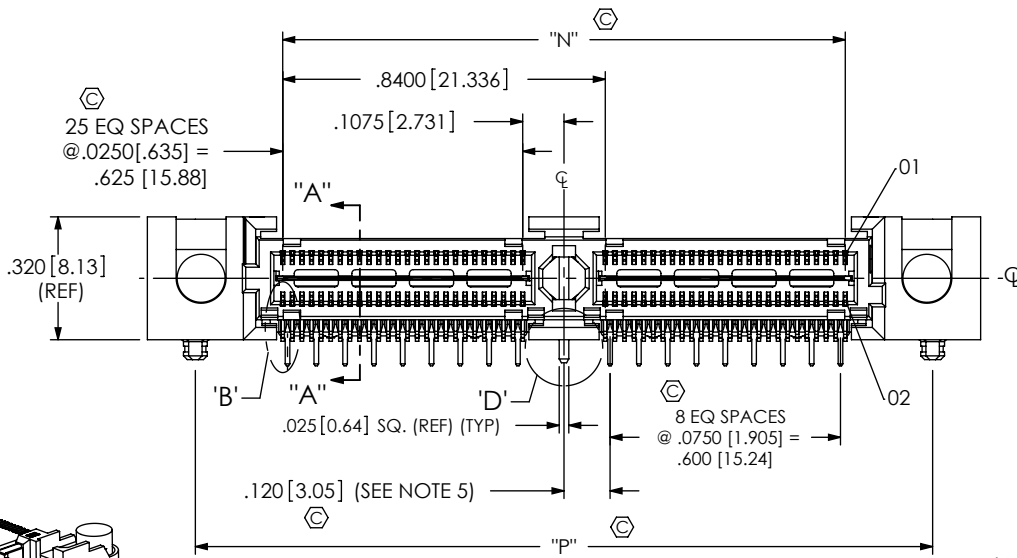
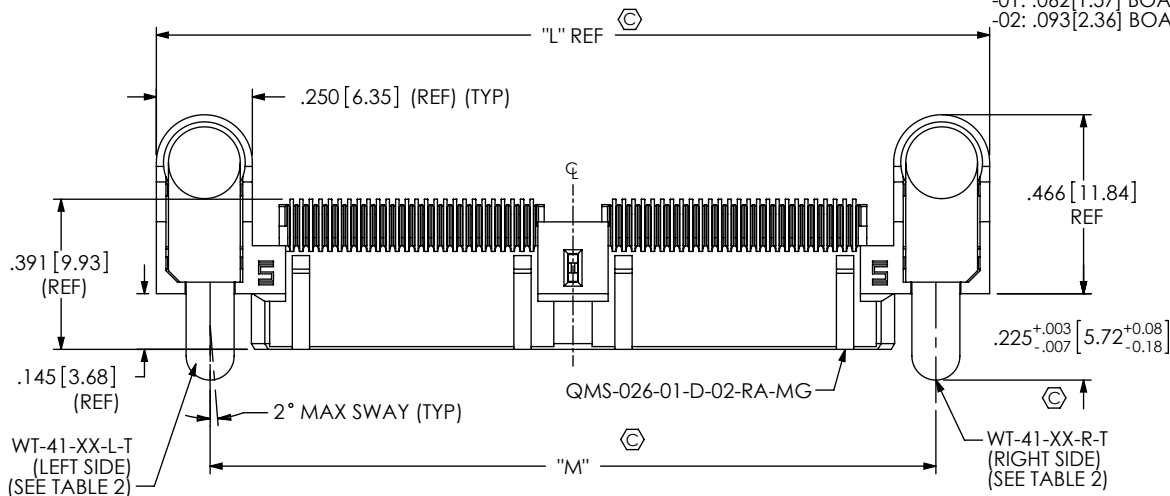


FIG. 1
(QMS-052-XX-XX-D-RA-MG SHOWN)

NOTES:

1. _____ REPRESENTS A CRITICAL DIMENSION.
2. MAXIMUM BURR ALLOWANCE: .0010 [0.02]
3. MINIMUM PUSHOUT FORCE: SIGNAL: .5 LB. [2.22N]
SHIELD/GROUND, POWER PIN, COUNTERWEIGHT
AND METAL GUIDE POST: 1 LB. [4.45N]
4. PARTS TO BE PACKAGED IN TRAYS AS STANDARD.
5. DOES NOT APPLY TO 1 BANK.
6. WT-28-XX-T NOT PRESENT ON SINGLE BANK WITH THE -MG OPTION
7. USE -Z- DATUM ZONE ONLY FOR MEASUREMENTS.

UNLESS OTHERWISE SPECIFIED,
DIMENSIONS ARE IN INCHES.

TOLERANCES ARE:

DECIMALS	ANGLES
0.0001	0.00000206
0.0002	0.00000412
0.0003	0.00000618
0.0004	0.00000824
0.0005	0.00001030
0.0006	0.00001236
0.0007	0.00001442
0.0008	0.00001648
0.0009	0.00001854
0.0010	0.00002060
0.0011	0.00002266
0.0012	0.00002472
0.0013	0.00002678
0.0014	0.00002884
0.0015	0.00003090
0.0016	0.00003296
0.0017	0.00003502
0.0018	0.00003708
0.0019	0.00003914
0.0020	0.00004120
0.0021	0.00004326
0.0022	0.00004532
0.0023	0.00004738
0.0024	0.00004944
0.0025	0.00005150
0.0026	0.00005356
0.0027	0.00005562
0.0028	0.00005768
0.0029	0.00005974
0.0030	0.00006180
0.0031	0.00006386
0.0032	0.00006592
0.0033	0.00006798
0.0034	0.00007004
0.0035	0.00007210
0.0036	0.00007416
0.0037	0.00007622
0.0038	0.00007828
0.0039	0.00008034
0.0040	0.00008240
0.0041	0.00008446
0.0042	0.00008652
0.0043	0.00008858
0.0044	0.00009064
0.0045	0.00009270
0.0046	0.00009476
0.0047	0.00009682
0.0048	0.00009888
0.0049	0.00010094
0.0050	0.00010300
0.0051	0.00010506
0.0052	0.00010712
0.0053	0.00010918
0.0054	0.00011124
0.0055	0.00011330
0.0056	0.00011536
0.0057	0.00011742
0.0058	0.00011948
0.0059	0.00012154
0.0060	0.00012360
0.0061	0.00012566
0.0062	0.00012772
0.0063	0.00012978
0.0064	0.00013184
0.0065	0.00013390
0.0066	0.00013596
0.0067	0.00013802
0.0068	0.00014008
0.0069	0.00014214
0.0070	0.00014420
0.0071	0.00014626
0.0072	0.00014832
0.0073	0.00015038
0.0074	0.00015244
0.0075	0.00015450
0.0076	0.00015656
0.0077	0.00015862
0.0078	0.00016068
0.0079	0.00016274
0.0080	0.00016480
0.0081	0.00016686
0.0082	0.00016892
0.0083	0.00017098
0.0084	0.00017304
0.0085	0.00017510
0.0086	0.00017716
0.0087	0.00017922
0.0088	0.00018128
0.0089	0.00018334
0.0090	0.00018540
0.0091	0.00018746
0.0092	0.00018952
0.0093	0.00019158
0.0094	0.00019364
0.0095	0.00019570
0.0096	0.00019776
0.0097	0.00019982
0.0098	0.00020188
0.0099	0.00020394
0.0100	0.00020600

XX: +.01 [.3]

.XXX: $\pm .005$ [.13]
.XXX: $\pm .0020$ [.051]

PROPRIETARY NOTE

THIS DOCUMENT CONTAINS INFORMATION
CONFIDENTIAL AND PROPRIETARY TO
SAMTEC, INC. AND SHALL NOT BE REPRODUCED
OR TRANSFERRED TO OTHER DOCUMENTS OR
DISCLOSED TO OTHERS OR USED FOR ANY
PURPOSE OTHER THAN THAT WHICH IT WAS
OBTAINED WITHOUT THE EXPRESSED WRITTEN
CONSENT OF SAMTEC, INC.

MATERIAL:

DO NOT SCALE DRAWING

SHEET SCALE: 2:1

INSULATOR: LCP, COLOR BLACK

CONTACT, POWER PIN, & GROUND PLANE: PHOS BRONZE
COUNTERWEIGHT: BRASS
METAL GUIDE POST: ZINC

DESCRIPTION:
.635mm DUAL ROW RIGHT ANGLE PLUG ASSEMBLY

DWG. NO. QMS-XXX-XX-XX-D-RA-XX-XXX-XX

BY: KNOWLDEN 8/25/2006	SHEET 1 OF 6
------------------------	--------------

F:\DWG\MISC\MKTG\QMS-XXX-XX-XX-D-RA-XX-XXX-XX-MKT.SI.DDRW

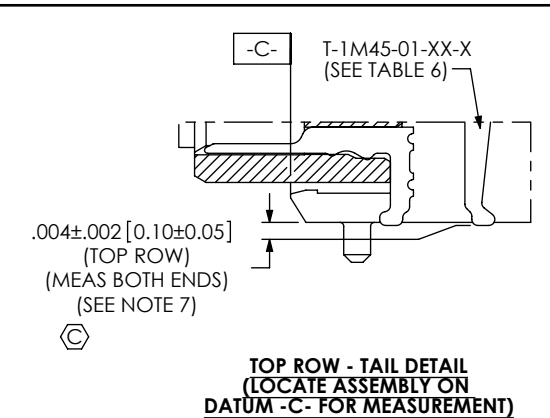
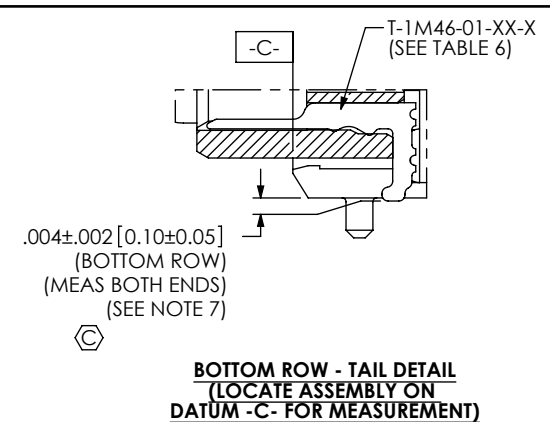
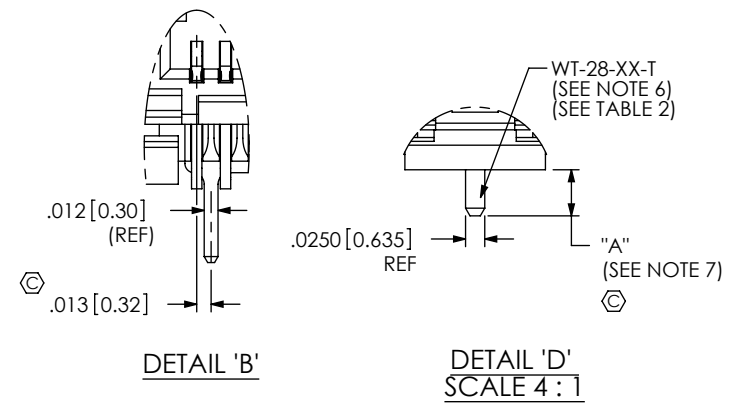
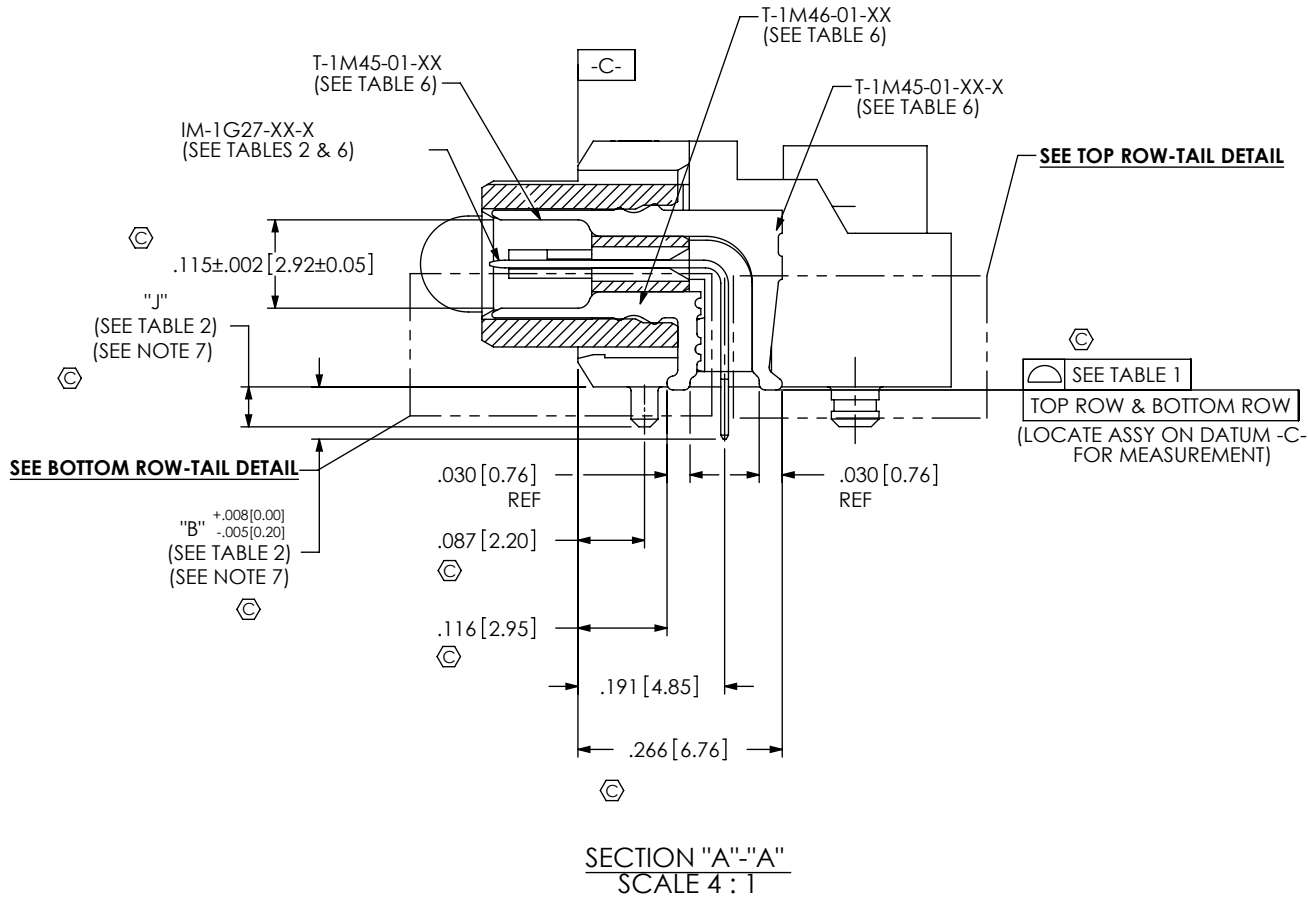


TABLE 1

NO OF POSITIONS	COPLANARITY	STRAIGHTNESS ROW 1	STRAIGHTNESS ROW 2
-026 THRU -052	.004[.10]	.004[.10]	.004[.10]
-078 THRU -104	.006[.15]	.006[.15]	.006[.15]

TABLE 2

LEAD STYLE	"A"	"B"	"C"	"J"	"K"	WT-28-XX-T	IM-1G27-XX-L	T-1R37-XX-T	WT-41-XX-X-T
-01	.060 [1.52]	.068 [1.73]	.055 [1.40]	.052 [1.32]	.052 [1.32]	WT-28-01-T	IM-1G27-01-L	T-1R37-01-T	WT-41-01-X-T
-02	.091 [2.31]	.099 [2.51]	.086 [2.18]	.083 [2.11]	.083 [2.11]	WT-28-02-T	IM-1G27-02-L	T-1R37-02-T	WT-41-02-X-T

PROPRIETARY NOTE

THIS DOCUMENT CONTAINS INFORMATION CONFIDENTIAL AND PROPRIETARY TO SAMTEC, INC. AND SHALL NOT BE REPRODUCED OR TRANSFERRED TO OTHER DOCUMENTS OR DISCLOSED TO OTHERS OR USED FOR ANY PURPOSE OTHER THAN THAT WHICH IT WAS OBTAINED WITHOUT THE EXPRESSED WRITTEN CONSENT OF SAMTEC, INC.

DO NOT SCALE DRAWING

SHEET SCALE: 1:0.166667

samtec

520 PARK EAST BLVD, NEW ALBANY, IN 47150
PHONE: 812-944-6733 FAX: 812-948-5047
e-Mail: info@SAMTEC.com code 55322

DESCRIPTION:

.635mm DUAL ROW RIGHT ANGLE PLUG ASSEMBLY

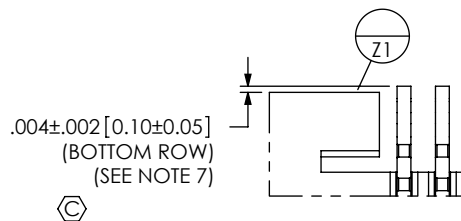
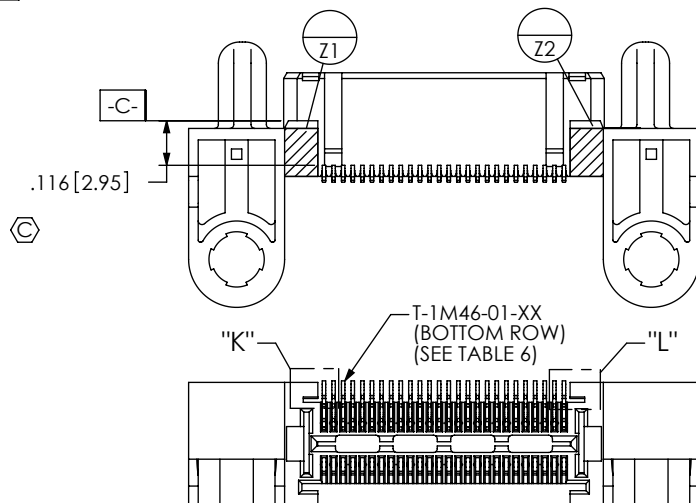
DWG. NO.

QMS-XXX-XX-XX-D-RA-XX-XXX-XX

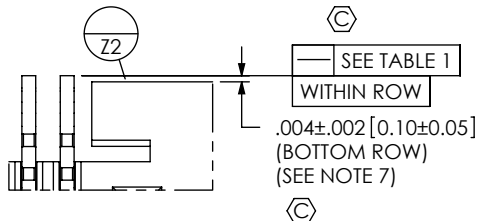
BY: KNOWLDEN 8/25/2006

SHEET 2 OF 6

INSPECTION VIEW 1
(FILL BOTTOM ROW)

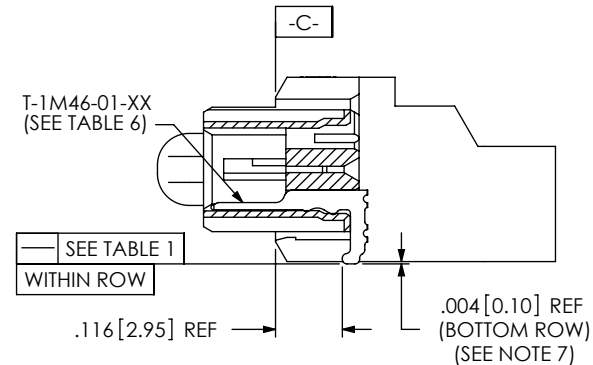
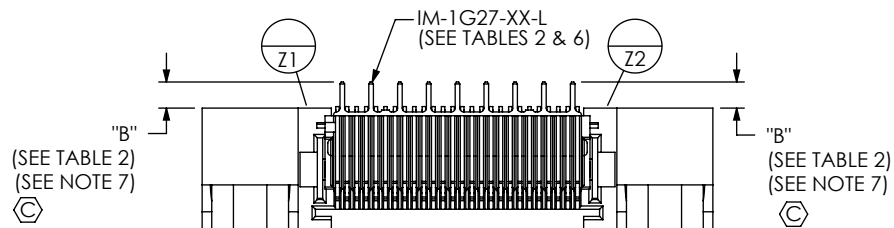
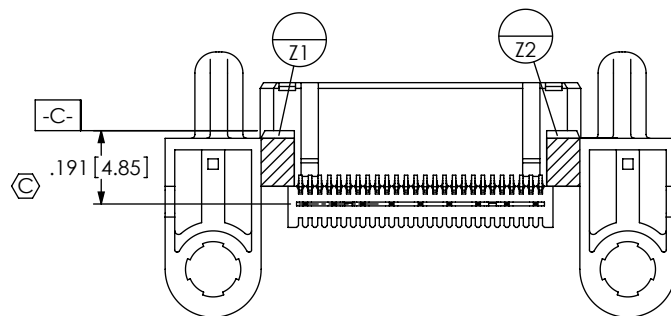


DETAIL "K"
SCALE 8 : 1

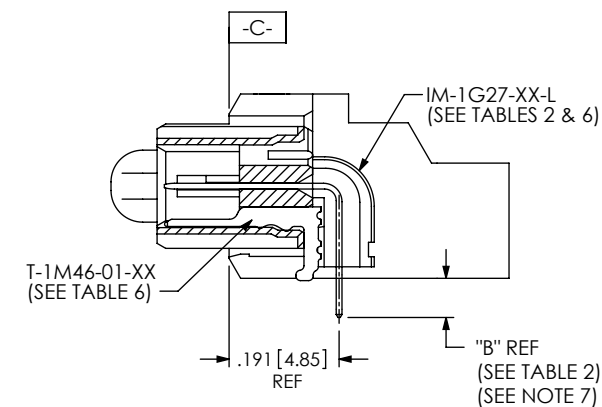


DETAIL "L"
SCALE 8 : 1

INSPECTION VIEW 2
(FILL IM-1G27)



IN-PROCESS 1
(FILL BOTTOM ROW)
(SEE INSPECTION VIEW 1 FOR ORIENTATION AND CPC'S)



IN-PROCESS 2
(FILL IM-1G27)
(SEE INSPECTION VIEW 2 FOR ORIENTATION AND CPC'S)

PROPRIETARY NOTE

THIS DOCUMENT CONTAINS INFORMATION
CONFIDENTIAL AND PROPRIETARY TO
SAMTEC, INC. AND SHALL NOT BE REPRODUCED
OR TRANSFERRED TO OTHER DOCUMENTS OR
DISCLOSED TO OTHERS OR USED FOR ANY
PURPOSE OTHER THAN THAT WHICH IT WAS
OBTAINED WITHOUT THE EXPRESSED WRITTEN
CONSENT OF SAMTEC, INC.

DO NOT SCALE DRAWING

SHEET SCALE: 1:0.166667

samtec

520 PARK EAST BLVD, NEW ALBANY, IN 47150
PHONE: 812-944-6733 FAX: 812-948-5047
e-Mail info@SAMTEC.com code 55322

DESCRIPTION:
.635mm DUAL ROW RIGHT ANGLE PLUG ASSEMBLY

DWG. NO.
QMS-XXX-XX-XX-D-RA-XX-XXX-XX

BY: KNOWLDEN 8/25/2006 SHEET 3 OF 6

INSPECTION VIEW 3
(FILL TOP ROW)

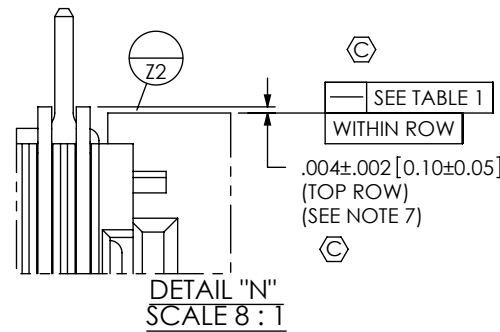
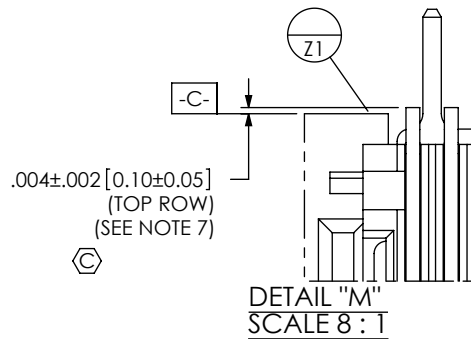
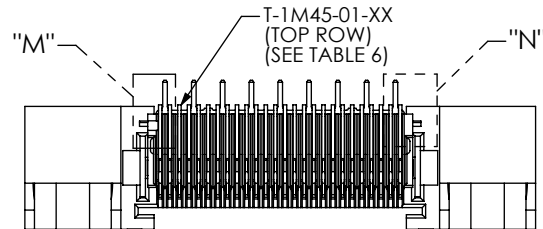
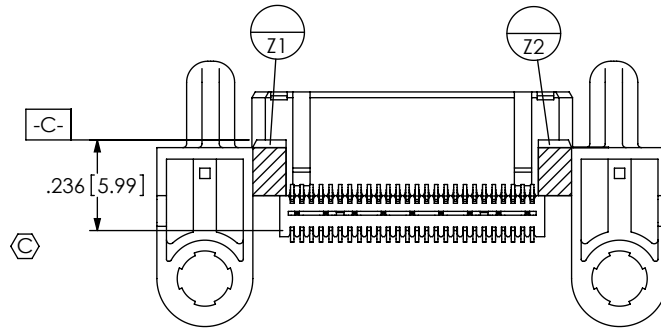
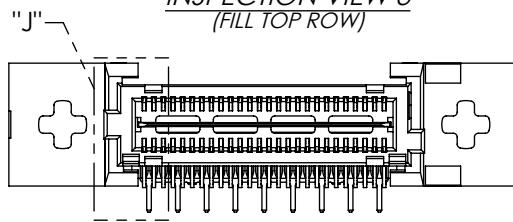
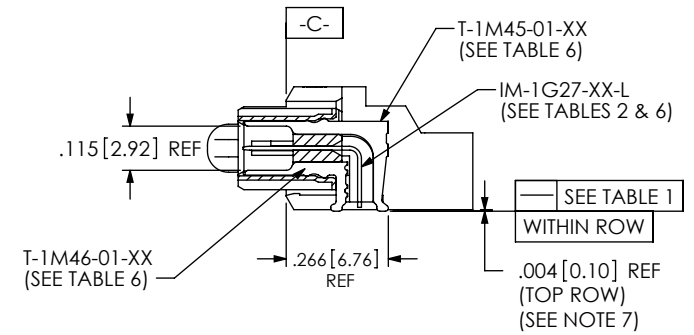


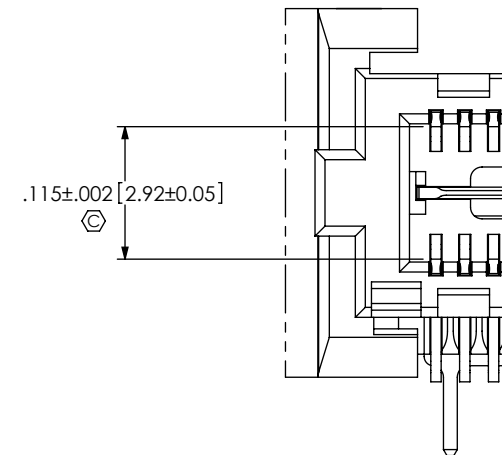
TABLE 6: PLATING SPECIFICATIONS

	CONTACT	CONTACT	GROUND PLANE	PCX CONTACTS
-SL	T-1M45-01-SL: 10μ" GOLD CONTACT, MATTE TIN TAIL	T-1M46-01-SL: 10μ" GOLD CONTACT, MATTE TIN TAIL	IM-1G27-XX-L: 10μ" GOLD CONTACT, MATTE TIN TAIL	T-1S69-XX-SL: 10μ" GOLD CONTACT, MATTE TIN TAIL
-S	T-1M45-01-S: 30μ" GOLD CONTACT, MATTE TIN TAIL	T-1M46-01-S: 30μ" GOLD CONTACT, MATTE TIN TAIL	IM-1G27-XX-L: 10μ" GOLD CONTACT, MATTE TIN TAIL	T-1S69-XX-S: 30μ" GOLD CONTACT, MATTE TIN TAIL
-L	T-1M45-01-L: 10μ" GOLD CONTACT, 3μ" GOLD TAIL	T-1M46-01-L: 10μ" GOLD CONTACT, 3μ" GOLD TAIL	IM-1G27-XX-L: 10μ" GOLD CONTACT, MATTE TIN TAIL	T-1S69-XX-SL: 10μ" GOLD CONTACT, MATTE TIN TAIL
-H	T-1M45-01-H: 30μ" GOLD CONTACT, 3μ" GOLD TAIL	T-1M46-01-H: 30μ" GOLD CONTACT, 3μ" GOLD TAIL	IM-1G27-XX-L: 10μ" GOLD CONTACT, MATTE TIN TAIL	T-1S69-XX-S: 30μ" GOLD CONTACT, MATTE TIN TAIL



IN-PROCESS 3
(FILL TOP ROW)

(SEE INSPECTION VIEW 3 FOR ORIENTATION AND CPC'S)



DETAIL "J"
SCALE 6:1

PROPRIETARY NOTE

THIS DOCUMENT CONTAINS INFORMATION CONFIDENTIAL AND PROPRIETARY TO SAMTEC, INC. AND SHALL NOT BE REPRODUCED OR TRANSFERRED TO OTHER DOCUMENTS OR DISCLOSED TO OTHERS OR USED FOR ANY PURPOSE OTHER THAN THAT WHICH IT WAS OBTAINED WITHOUT THE EXPRESSED WRITTEN CONSENT OF SAMTEC, INC.

DO NOT SCALE DRAWING

SHEET SCALE: 1:0.166667



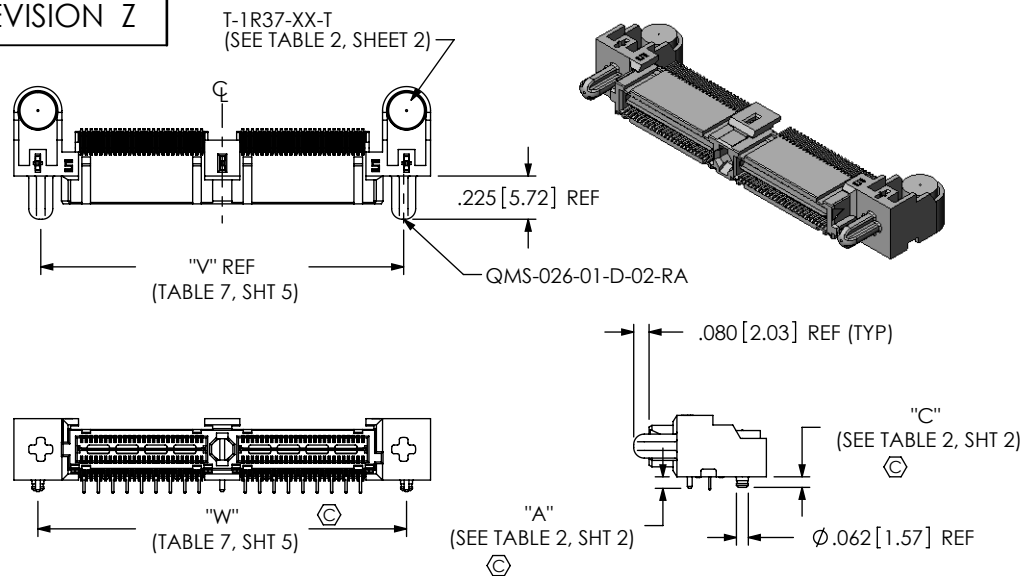
520 PARK EAST BLVD, NEW ALBANY, IN 47150
PHONE: 812-944-6733 FAX: 812-948-5047
e-Mail: info@SAMTEC.com code 55322

DESCRIPTION:
.635mm DUAL ROW RIGHT ANGLE PLUG ASSEMBLY

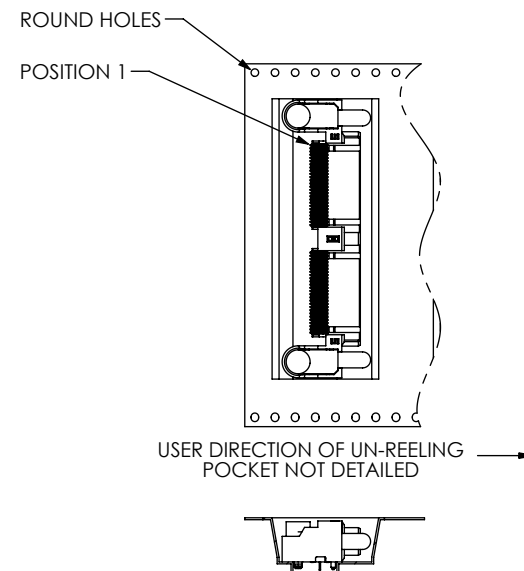
DWG. NO.
QMS-XXX-XX-XX-D-RA-XX-XXX-XX

BY: KNOWLDEN 8/25/2006 SHEET 4 OF 6

REVISION Z



PACKAGING VIEW -TR: TAPE & REEL OPTION (QMS-052-01-XX-D-RA-MG-TR SHOWN)



-K: KAPTON PAD QMS-026-01-XX-D-RA-MG-K SHOWN (USE K-850-650) (FOR 1 AND 3 BANKS ONLY)

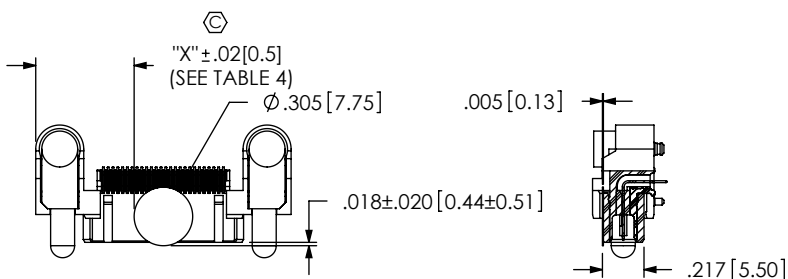
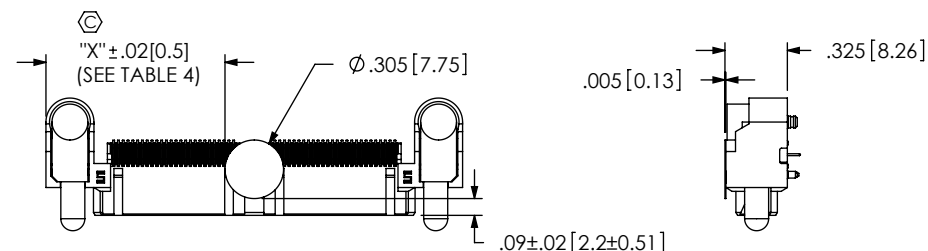


TABLE 4			
	STANDARD & -MG	-PC4	-PC8
POS.	"X"		
-026	0.513 [13.03]	0.776 [19.71]	0.934 [23.71]
-052	0.933 [23.70]	1.196 [30.38]	1.354 [34.38]
-078	1.353 [34.37]	1.616 [41.05]	1.774 [45.05]
-104	1.773 [45.03]	2.036 [51.71]	2.194 [55.71]

-K: KAPTON PAD QMS-052-01-XX-D-RA-MG-K SHOWN (USE K-850-650) (FOR 2 AND 4 BANKS ONLY)



PROPRIETARY NOTE

THIS DOCUMENT CONTAINS INFORMATION
CONFIDENTIAL AND PROPRIETARY TO
SAMTEC, INC. AND SHALL NOT BE REPRODUCED
OR TRANSFERRED TO OTHER DOCUMENTS OR
DISCLOSED TO OTHERS OR USED FOR ANY
PURPOSE OTHER THAN THAT WHICH IT WAS
OBTAINED WITHOUT THE EXPRESSED WRITTEN
CONSENT OF SAMTEC, INC.

DO NOT SCALE DRAWING

SHEET SCALE: 1:1

samtec

520 PARK EAST BLVD, NEW ALBANY, IN 47150
PHONE: 812-944-6733 FAX: 812-948-5047
e-Mail: info@SAMTEC.com code 55322

DESCRIPTION:
.635mm DUAL ROW RIGHT ANGLE PLUG ASSEMBLY

DWG. NO.
QMS-XXX-XX-XX-D-RA-XX-XXX-XX

BY: KNOWLDEN 8/25/2006 SHEET 6 OF 6