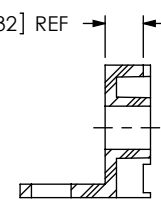
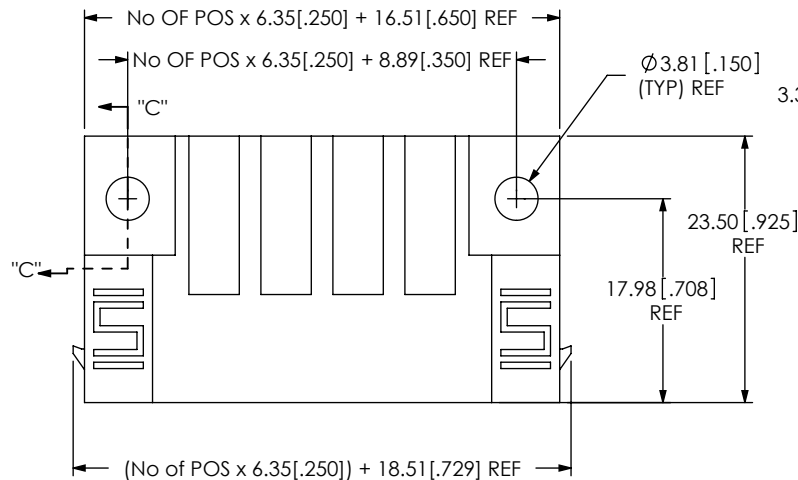


DO NOT  
SCALE FROM  
THIS PRINT

DESIGNED & DIMENSIONED  
IN MILLIMETERS[INCHES]

PET-XX-XX-X-RA-XX-XX



SECTION "C"-"C"

No OF POSITIONS  
-02, -04, -06, -08

LEAD STYLE

-01: FOR 1.57[.062]  
THICK PCB  
(USE SUB-T-1M34-01-X)  
-02: FOR 3.18[.125]  
THICK PCB  
(USE SUB-T-1M34-02-X)

\*OPTION

-LC: LOCKING CLIP  
(USE LC-11-TM)  
(SEE FIG 2, SHT 2)  
-SD: SCREW DOWN  
(SEE FIG 1, SHT 1)

OPTION

-NL: NO LATCH EARS  
(SEE FIG 3, SHT 2)

RIGHT ANGLE

PLATING SPECIFICATION

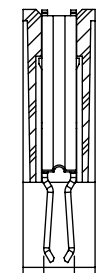
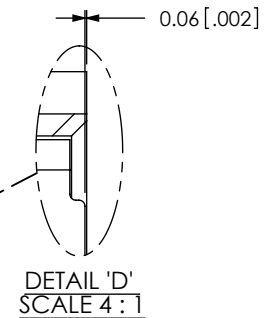
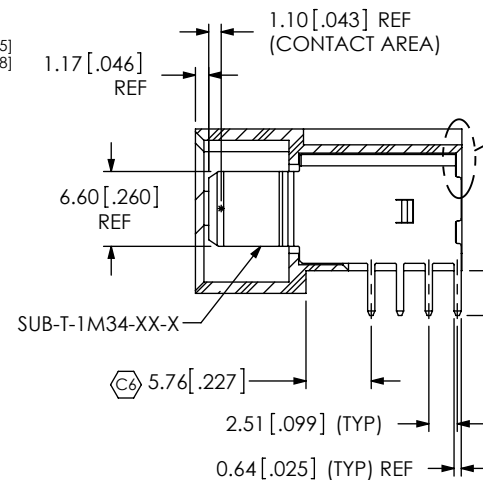
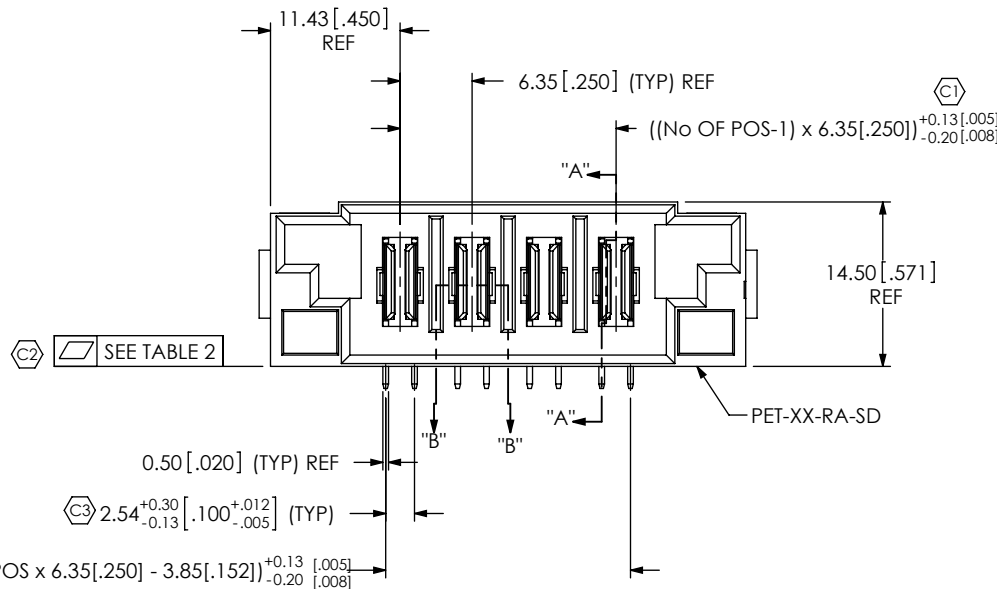
-S: SELECTIVE GOLD/MATTE  
TIN TAIL

-T: MATTE TIN

-L: LIGHT SELECTIVE GOLD/MATTE  
TIN TAIL

\* - BLANK ONLY FOR EXISTING CUSTOMERS

TABLE 1		
STYLE	"A"	SUB-T-1M34-XX-X
-01	2.35[.093]	SUB-T-1M34-01-X
-02	3.95[.156]	SUB-T-1M34-02-X



SECTION "B"-"B"

TABLE 2		MAX
PART NUMBER		
PET-02-XX-X-RA-XX		0.15[.006]
PET-04-XX-X-RA-XX		0.15[.006]
PET-06-XX-X-RA-XX		0.20[.008]
PET-08-XX-X-RA-XX		0.20[.008]

NOTES:

1. Ⓢ REPRESENTS A CRITICAL DIMENSION.
2. BURR ALLOWANCE: 0.038[.0015] MAX.
3. MINIMUM PUSHOUT FORCE: 4.45N[1 LB].
4. PARTS TO BE PACKAGED IN TRAYS.
5. IF EMPTY SPACE EXISTS IN THE TRAY POCKETS, INSERT A PLUG TP-07 TO PREVENT PARTS FROM SLIDING

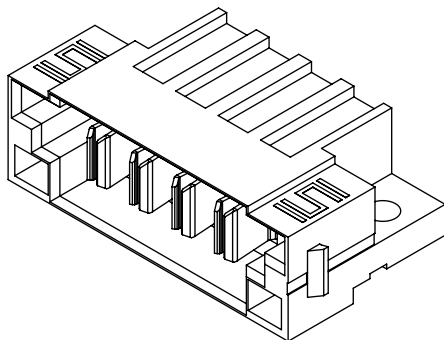


FIG 1  
PET-04-02-X-RA-SD SHOWN

SECTION "A"-"A"

UNLESS OTHERWISE SPECIFIED,  
DIMENSIONS ARE IN MILLIMETERS.  
TOLERANCES ARE:  
DECIMALS ANGLES  
.X: ±0.3[.01] 2°  
.XX: ±0.13[.005]  
.XXX: ±0.051[.0020]

PROPRIETARY NOTE

THIS DOCUMENT CONTAINS INFORMATION  
CONFIDENTIAL AND PROPRIETARY TO  
SAMTEC, INC. AND SHALL NOT BE REPRODUCED  
OR TRANSFERRED TO OTHER DOCUMENTS OR  
DISCLOSED TO OTHERS OR USED FOR ANY  
PURPOSE OTHER THAN THAT WHICH IT WAS  
OBTAINED WITHOUT THE EXPRESSED WRITTEN  
CONSENT OF SAMTEC, INC.

MATERIAL: DO NOT SCALE DRAWING  
INSULATOR: LCP, COLOR: BLACK  
CONTACT: COPPER ALLOY

SHEET SCALE: 1.5:1

**samtec**

520 PARK EAST BLVD, NEW ALBANY, IN 47150  
PHONE: 812-944-6733 FAX: 812-948-5047  
e-Mail: info@SAMTEC.com code: 55322

DESCRIPTION:  
RIGHT ANGLE POWER TERMINAL

DWG. NO.  
PET-XX-XX-X-RA-XX-XX

BY: CHAD F 3/28/2005 SHEET 1 OF 3

FIG 2  
PET-04-02-X-RA-LC SHOWN  
(SAME AS FIG 1, UNLESS OTHERWISE STATED)

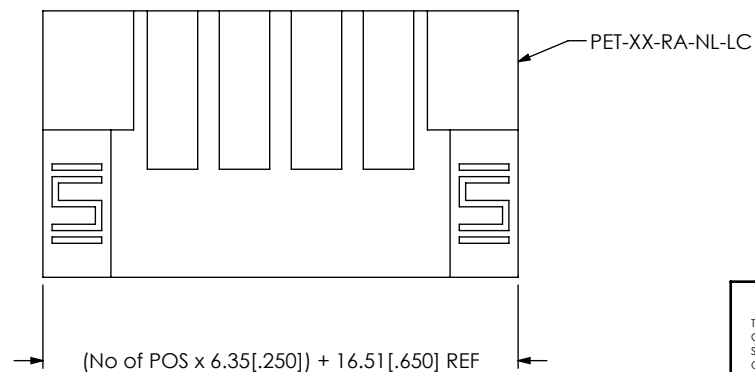
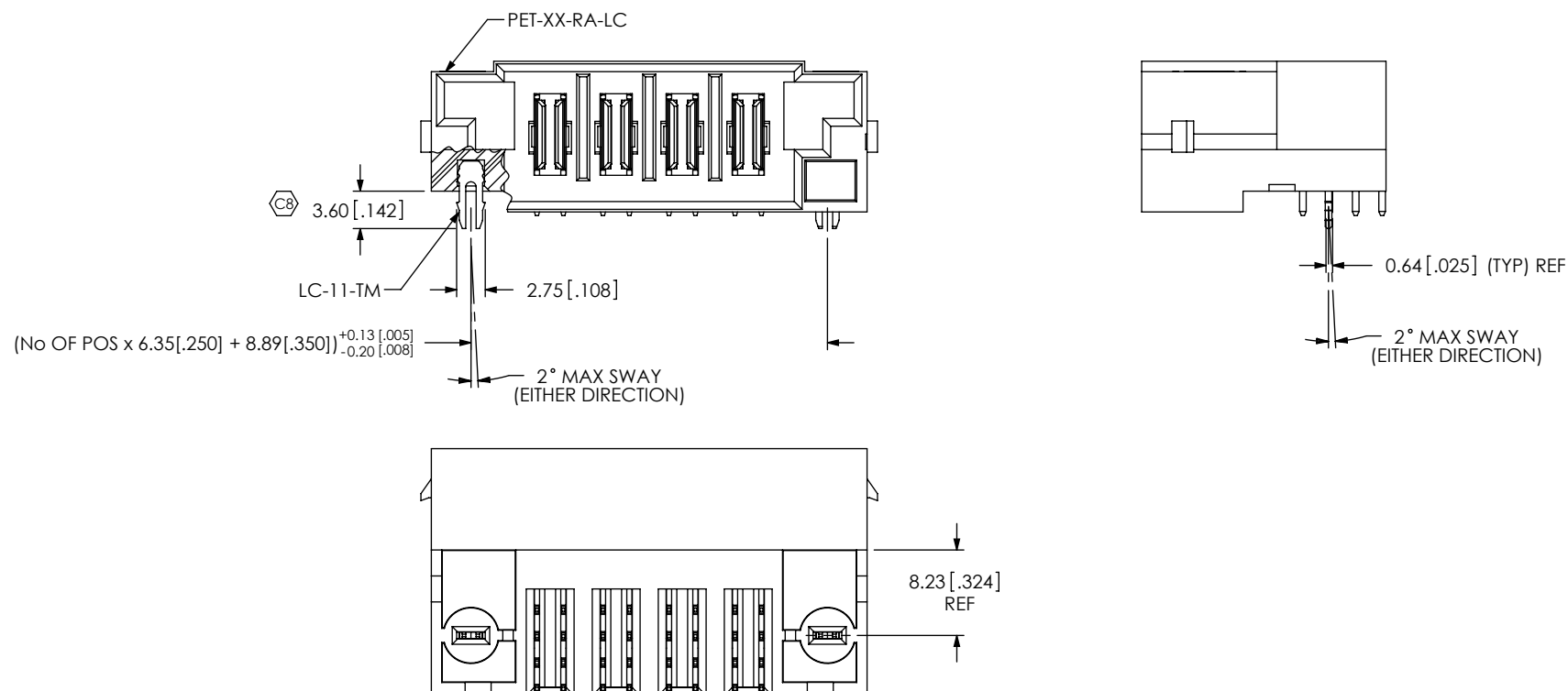


FIG 3  
-NL: OPTION  
PET-04-02-X-RA-NL-LC SHOWN  
(SAME AS FIG 1, UNLESS OTHERWISE STATED)

PROPRIETARY NOTE  
THIS DOCUMENT CONTAINS INFORMATION  
CONFIDENTIAL AND PROPRIETARY TO  
SAMTEC, INC. AND SHALL NOT BE REPRODUCED  
OR TRANSFERRED TO OTHER DOCUMENTS OR  
DISCLOSED TO OTHERS OR USED FOR ANY  
PURPOSE OTHER THAN THAT WHICH IT WAS  
OBTAINED WITHOUT THE EXPRESSED WRITTEN  
CONSENT OF SAMTEC, INC.

DO NOT SCALE DRAWING

SHEET SCALE: 1.5:1

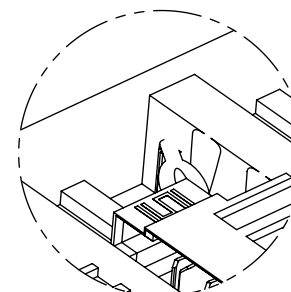
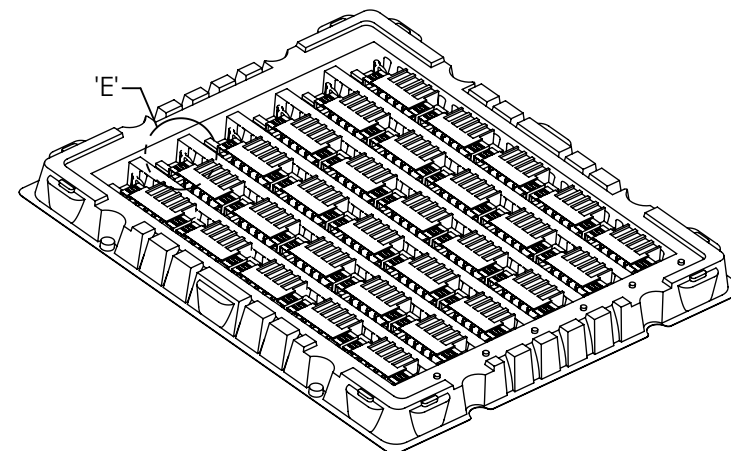
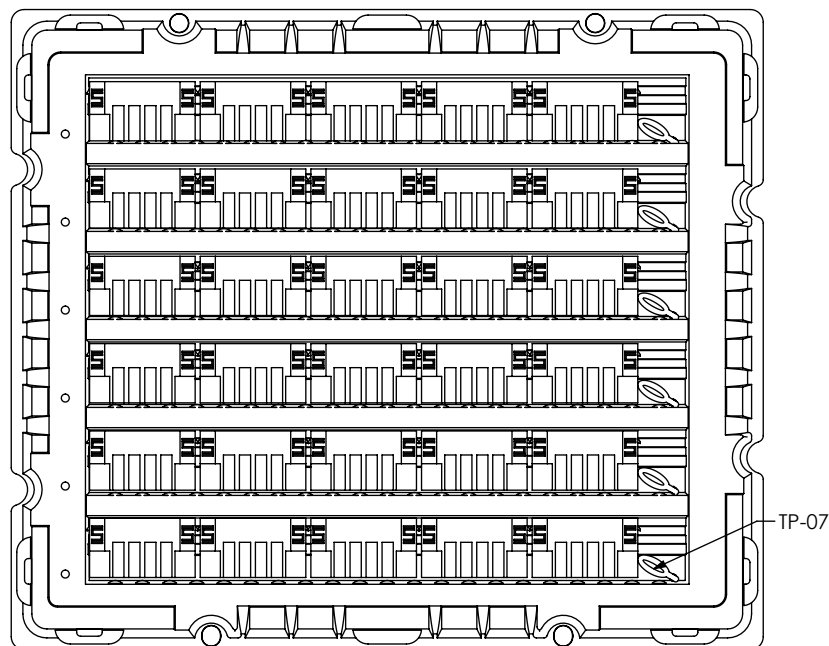
**samtec**

520 PARK EAST BLVD, NEW ALBANY, IN 47150  
PHONE: 812-944-6733 FAX: 812-948-5047  
e-Mail: info@SAMTEC.com code: 55322

DESCRIPTION:  
RIGHT ANGLE POWER TERMINAL

DWG. NO.  
PET-XX-XX-X-RA-XX-XX

BY: CHAD F 3/28/2005 SHEET 2 OF 3



DETAIL 'E'  
SCALE 1:1

FIG 4  
PACKAGE IN TRAYS AS SHOWN  
TRAY VIEW  
(SEE NOTE 5)

**PROPRIETARY NOTE**  
THIS DOCUMENT CONTAINS INFORMATION  
CONFIDENTIAL AND PROPRIETARY TO  
SAMTEC, INC. AND SHALL NOT BE REPRODUCED  
OR TRANSFERRED TO OTHER DOCUMENTS OR  
DISCLOSED TO OTHERS OR USED FOR ANY  
PURPOSE OTHER THAN THAT WHICH IT WAS  
OBTAINED WITHOUT THE EXPRESSED WRITTEN  
CONSENT OF SAMTEC, INC.

DO NOT SCALE DRAWING

SHEET SCALE: 1:3

**samtec**

520 PARK EAST BLVD, NEW ALBANY, IN 47150  
PHONE: 812-944-6733 FAX: 812-948-5047  
e-Mail: info@SAMTEC.com code: 55322

DESCRIPTION:  
RIGHT ANGLE POWER TERMINAL

DWG. NO. PET-XX-XX-X-RA-XX-XX

BY: CHAD F 3/28/2005 SHEET 3 OF 3