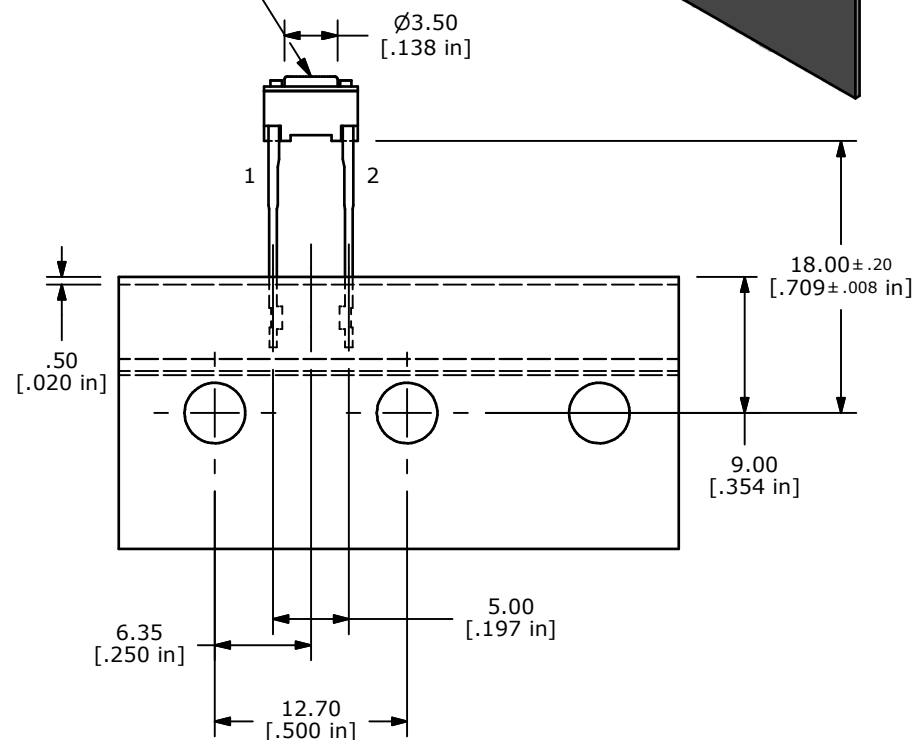


F ACTUATOR COLOR:  
▲ NATURAL/WHITE



## NOTES:

1. ALL DIMENSIONS IN MM [INCH]
2. GENERAL TOLERANCE: X.X=± 0.4mm  
X.XX=± 0.25mm
3. CONTACT RATING: 50mA @ 12VDC
4. CONTACT MATERIAL: SILVER
- ▲ 5. OPERATING FORCE: 160± 50gf
6. TRAVEL: 0.25 +0.2/-0.1mm
7. CONTACT RESISTANCE: 100mΩ MAX.
8. ELECTRICAL LIFE: 100,000 CYCLES
9. PACKAGING: 1,000 PCS RADIAL
10. 2002/95/EC (ROHS) COMPLIANT
11. ▲ DENOTES CRITICAL PARAMETERS.

**E-SWITCH®**

F	20871	NATURAL/WHITE WAS BLACK	11/7/12	EBP
E	20817	REDRAWN AND RE-RELEASED	10/09/12	RC
REV	PCR NO	DESCRIPTION	DATE	BY

THE INFORMATION CONTAINED IN THIS DOCUMENT IS PROPRIETARY  
TO E-SWITCH AND IS NOT TO BE COPIED OR TRANSFERRED

TITLE TL59NF160Q

SCALE 2:1

DATE 10/9/2012

DR rc

DWG P010560

REV F