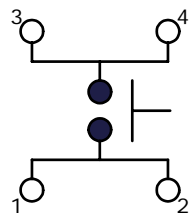
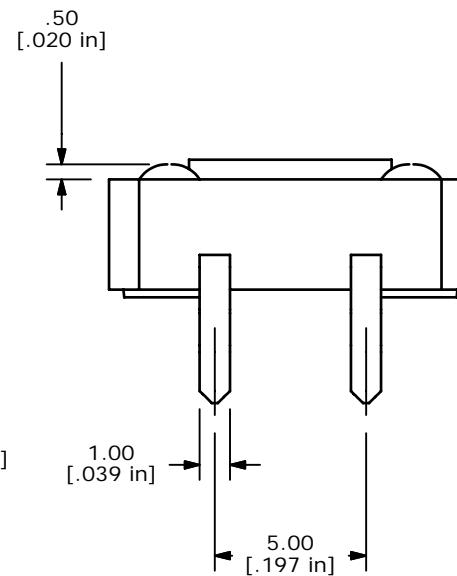
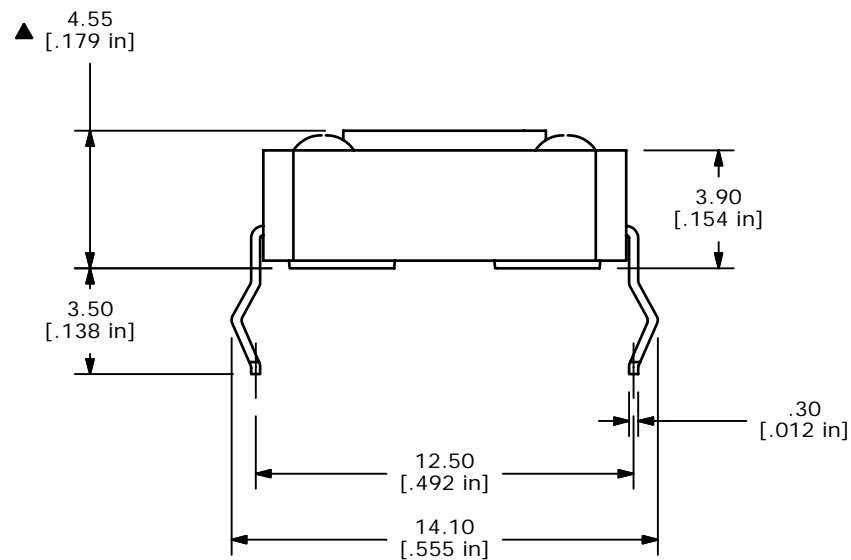
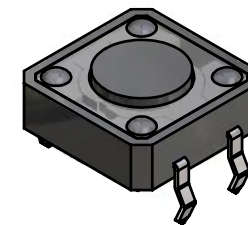
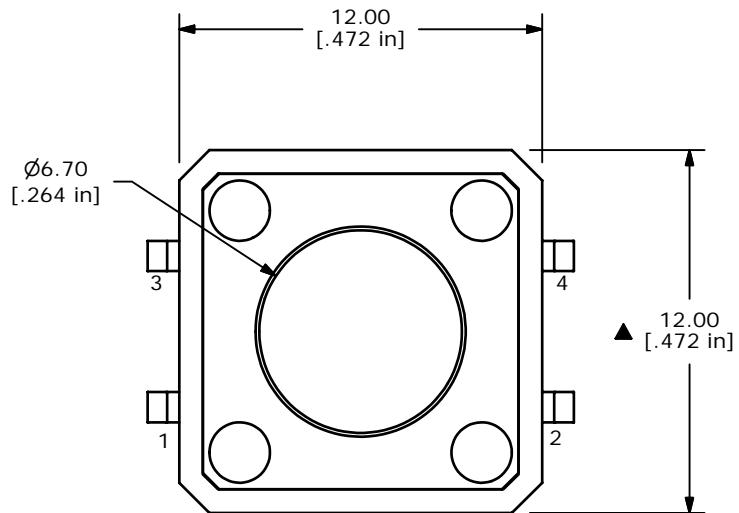


PCB MOUNTING



CIRCUIT: SPST



NOTES:

1. ALL DIMENSIONS IN MM [INCH]
2. GENERAL TOLERANCE: X.X=±0.4
X.XX=±0.25
3. TERMINAL NUMBERS FOR REF. ONLY
- ▲ 4. RATING: 50mA @ 12VDC
5. TRAVEL: 0.30±0.15mm
6. OPERATING FORCE: 260±50mN
7. CONTACT RESISTANCE: 100mΩ MAX.
8. ELECTRICAL LIFE: 100,000 CYCLES
9. ▲ DENOTES CRITICAL PARAMETER
10. 2002/95/EC (ROHS) COMPLIANT

E-SWITCH®

A	15878	RELEASED FOR PRODUCTION	3/23/06	PH
REV	PCR NO	DESCRIPTION	DATE	BY

THE INFORMATION CONTAINED IN THIS DOCUMENT IS PROPRIETARY
TO E-SWITCH AND IS NOT TO BE COPIED OR TRANSFERRED

TITLE TL1100BF260Q				
SCALE 2:1	DATE 3/23/2006	DR PH	DWG P001114	REV A