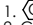


- NOTES:
- 1.  REPRESENTS A CRITICAL DIMENSION.
 - 2. COPLANARITY TO BE WITHIN .006.
 - 3. BURR ALLOWANCE: .0015 MAX.
 - 4. MINIMUM PUSHOUT FORCE: .5 LB.
 - 5. MAXIMUM ALLOWABLE BOW: .002 INCH/INCH AFTER ASSEMBLY.
 - 6. LOAD INSERTS IN DIRECTION OF THE ARROW; FLUSH TO .003" RECESSED.
 - 7. THREADED INSERT MUST BE ABLE TO HANDLE 20 in-oz's OF TORQUE MIN WITHOUT ROTATING OR "LOOSENING".
 - 8. THREADED INSERT RETENTION TO BE 7lbs. MIN.
 - 9. LEADS TO BE FLUSH TO .005 ABOVE THE BODY.

OPP-XX-01-XX-S-X-XX

No OF POSITIONS
-03, -07, -10

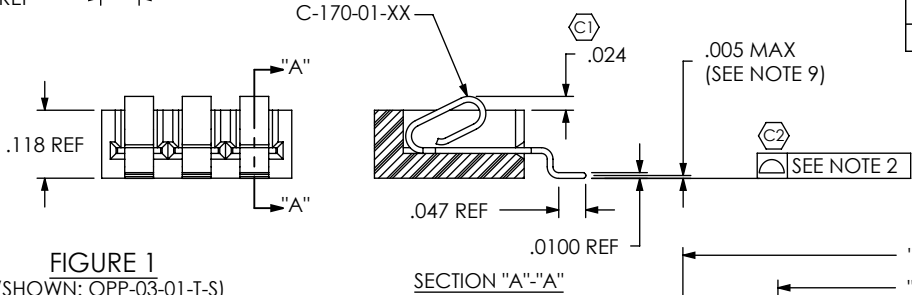
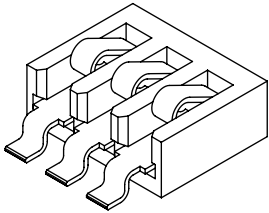
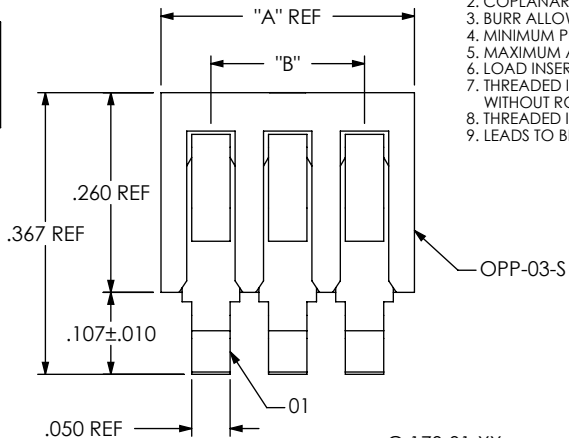
PLATING SPECIFICATION
-T: TIN (USE C-170-01-T)
-TM: MATTE TIN (USE C-170-01-T)

ROW SPECIFICATION
-S: SINGLE (USE OPP-XX-S)

ALIGNMENT PIN OPTION
-AT: TOP SIDE (USE OPP-XX-S-AT-X)
-AB: BOTTOM SIDE (USE OPP-XX-S-AB-X)
-AD: DUAL (TOP & BOTTOM)
(USE OPP-XX-S-AD-X)
BLANK FOR NO ALIGNMENT PIN

THREADED INSERT OPTION
-E: THREADED INSERT (ENGLISH)
(USE INS-14-2-56-115, SEE FIGURE 3)
(USE OPP-XX-S-XX-T, SEE FIGURE 3)
-M: THREADED INSERT (METRIC)
(USE INS-14-M2-115-N, SEE FIGURE 3)
(USE OPP-XX-S-XX-T, SEE FIGURE 3)
BLANK FOR NON-THREADED INSERT

DO NOT
SCALE FROM
THIS PRINT



PART NUMBER		
OPTION	INSERT	"B"
-E	INS-14-2-56-115	2 x 56
-M	INS-14-M2-115-N	M2.0 x 4

FIGURE 3
THREADED INSERT OPTION
-M & -E: THREADED OPTIONS
(SHOWN: OPP-03-01-XX-S-E)

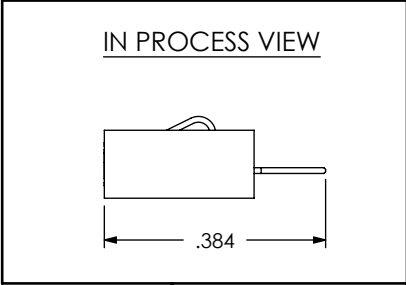


FIGURE 2
ALIGNMENT PIN OPTIONS
(SHOWN: OPP-03-01-XX-S-AD)

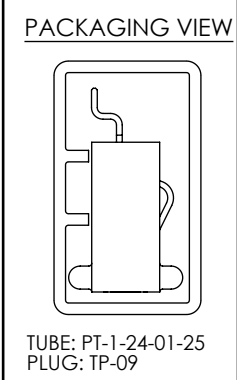
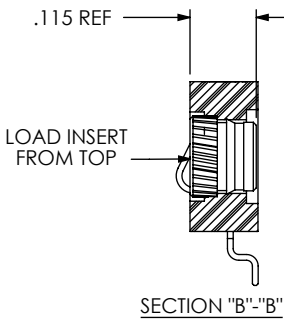
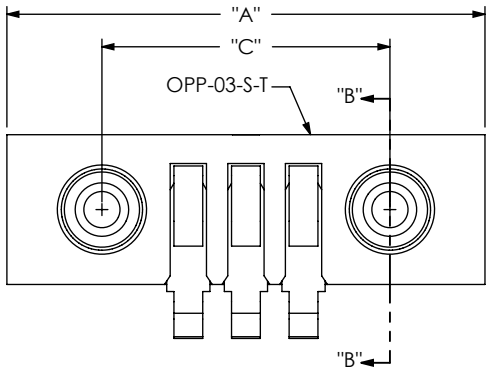
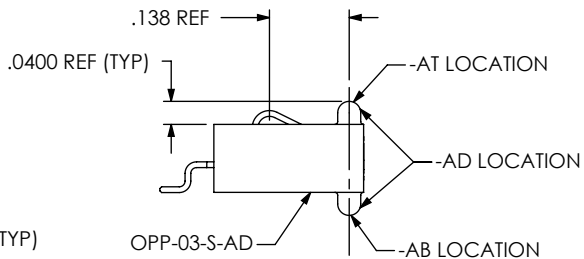
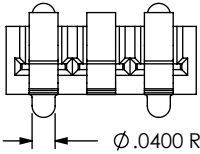
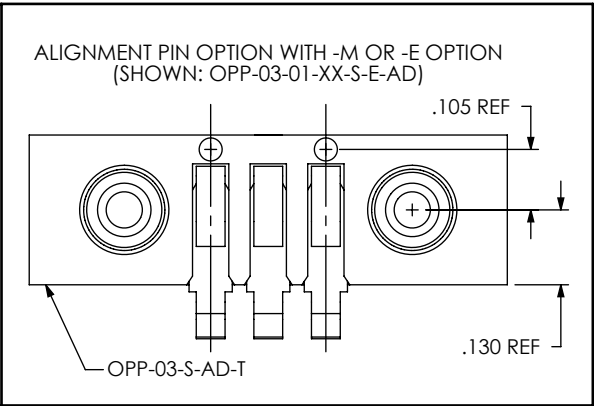
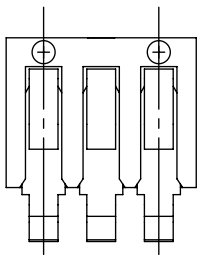



TABLE 1				
NUMBER OF POSITIONS	"A" WITHOUT -E OR -M OPTION	"A" WITH -E OR -M OPTION	"B"	"C"
-03	0.330	0.830	0.200	0.500
-07	0.730	1.230	0.600	0.900
-10	1.030	1.530	0.900	1.200

UNLESS OTHERWISE SPECIFIED, DIMENSIONS ARE IN INCHES.
TOLERANCES ARE:
DECIMALS ANGLES
.XX: ±.01 [.3] 2°
.XXX: ±.005 [.13]
.XXXX: ±.0020 [.051]

PROPRIETARY NOTE
THIS DOCUMENT CONTAINS INFORMATION CONFIDENTIAL AND PROPRIETARY TO SAMTEC, INC. AND SHALL NOT BE REPRODUCED OR TRANSFERRED TO OTHER DOCUMENTS OR DISCLOSED TO OTHERS OR USED FOR ANY PURPOSE OTHER THAN THAT WHICH IT WAS OBTAINED WITHOUT THE EXPRESSED WRITTEN CONSENT OF SAMTEC, INC.

MATERIAL: DO NOT SCALE DRAWING SHEET SCALE: 3:1
INSULATOR: LCP, COLOR: BLACK
CONTACT: BECU 17410

F:\DWG\WISC\MKTG\OPP-XX-01-XX-S-X-XX-MKT.SLDDRW



520 PARK EAST BLVD, NEW ALBANY, IN 47150
PHONE: 812-944-6733 FAX: 812-948-5047
e-Mail info@SAMTEC.com code 55322

DESCRIPTION:
ONE PIECE POWER ASSEMBLY

DWG. NO.
OPP-XX-01-XX-S-X-XX

BY: ERIC M. 06/15/01 SHEET 1 OF 1