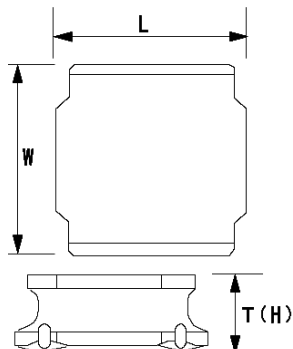


SMD Power Inductors (NR series S type)

NRS5012T150MMGF



■ Features

- Item Summary
15 μ H ($\pm 20\%$), 1200mA, 640mA
- Lifecycle Stage
Mass Production
- Standard packaging quantity (minimum)
Taping 1000pcs

■ Products characteristics table

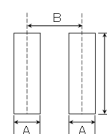
CaseSize (EIA/JIS)	~/5012
Inductance	15 μ H ($\pm 20\%$)
Inductance Measuring Frequency	100kHz
Rated Current -Saturation Current	1200mA
Rated Current -Temperature Rise Current	640mA
DC Resistance (max)	0.804 Ω
Avg. of DC Resistance	0.67 Ω
Temperature Range	-25°C to 125°C
Self-resonant Frequency (min)	22MHz
RoHS Compliance	Yes
Halogen Free	Yes
Soldering Method	Reflow

■ External Dimensions

L	4.9mm ± 0.2
W	4.9mm ± 0.2
H	1.2mm max

■ Recommended Land Patterns

【推奨ランドパターン】	
実装上の注意	
・実装状態を確認の上ご使用ください。また、ご購入の際は、本製品のハンダ付けはリフローハンダ工法にお願いします。	
【Recommended Land Patterns】	
Surface Mounting	
・Mounting and soldering conditions should be checked beforehand.	
・Applicable soldering process to these products is reflow soldering only.	



SMD Power Inductors (NR series/NR series H type/S type /V type)			
Type	A	B	C
NRS5010			
NRS5012			
NRS5014			
NRS5020	1.5	3.6	4
NRS5024			
NRS5030			
NR 5040, NRS5040			

unit:mm