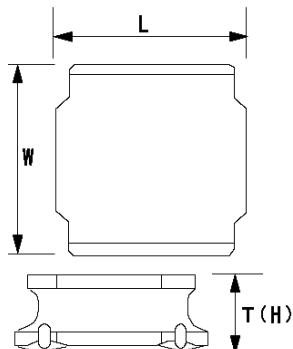


SMD Power Inductors (NR series)

NR6020T100M



■ Features

- Item Summary
10 μ H($\pm 20\%$), 1700mA, 1400mA
- Lifecycle Stage
Mass Production
- Standard packaging quantity (minimum)
Taping 2500pcs

■ Products characteristics table

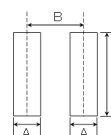
CaseSize (EIA/JIS)	~/6020
Inductance	10 μ H($\pm 20\%$)
Inductance Measuring Frequency	100kHz
Rated Current -Saturation Current	1700mA
Rated Current -Temperature Rise Current	1400mA
DC Resistance (max)	0.15 Ω
Avg. of DC.Resistance	0.125 Ω
Temperature Range	-25°C to 120°C
Self-resonant Frequency (min)	18MHz
RoHS Compliance	Yes
Halogen Free	Yes
Soldering Method	Reflow

■ External Dimensions

L	6mm ± 0.2
W	6mm ± 0.2
H	2mm max

■ Recommended Land Patterns

【推奨ランドパターン】 実装上の注意 ・実装状態を確認の上ご使用くださいようお願いいたします。 ・本製品のはんだ付けはリフローはんだ工法に限りします。
【Recommended Land Patterns】 Surface Mounting ・Mounting and soldering conditions should be checked beforehand. ・Applicable soldering process to these products is reflow soldering only.



SMD Power Inductors (NR series/NR series H type/S type /V type)			
Type	A	B	C
NRS601.0, NR 601.2, NRS601.2, NRS601.4, NR 6020, NRS6020, NR 6020, NRS6020, NR 6045, NRS6045	1.6	4.7	5.7

unit: mm